



# WOT!

## About Ratby

PUBLISHED BY RATBY SCOUT GROUP



### 'THE MELODY BOYS'

#### RATBY'S PRIZE WINNING DANCE BAND



*'Melody Boys.'*

Ratby's very own dance band began its life as an enthusiastic quartet in 1928. Winston Stevenson, the eldest son of the village newsagents, had just bought a saxophone and invited George William Barratt (piano), Wilf Grudgings (violin) and Bradley Moore (drums) to play jazz with him. Friday night became their regular practice night at the Stevenson home. Soon they were invited to accompany dancing at the Church Room socials. Sid Astill (saxophone) and Frank Taylor (violin) then joined the group. The high standard of their strict tempo rhythm gained them regular invitations to play at Ratby's new "Majestic Ballroom" (1930), for which they were paid as well! Their growing reputation brought them invitations to play for other villages and local hunt balls. After World War II, their number increased to nine players and they earned engagements at Leicester's "Palais de Dance" in Humberstone Gate and also the De Monfort Hall. The band's highest achievement was in 1947, when they won the Midland Region's Melody Maker Dance Band Championship in Birmingham.

Sid Astill and Winston Stevenson are pictured on the front row to either side of the microphone. If anybody can identify other musicians in the photograph or has further anecdotes or information about the Melody Boys, please contact Ratby Local History Group. (0116 2394168)

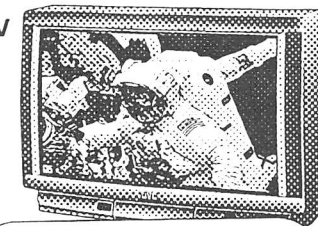
Arthur Stevenson

## EURONICS CENTRES

# TOP BRANDS AND GREAT VALUE!

### JVC Widescreen Nicam TV

- 28"/66cm Visible Screen
- Nicam Stereo
- Fastext ● T-V Link
- Auto Widescreen
- Signalling
- Supplied With TV Stand



**£499.99**

### JVC Widescreen Dolby Pro-Logic Flat TV

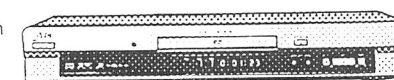
- 32"/76cm Natural Flat
- 16:9 Widescreen Display
- Dolby Pro-Logic
- 3D-PHONIC
- Nicam Stereo ● Fastext
- 2 x 40W Full-Range
- Super-Slim Dome
- Speakers ● Supplied
- With Deluxe TV Stand



**£799.99**

### JVC DVD Player

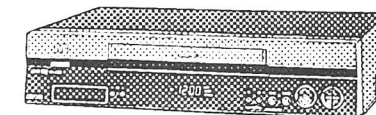
- Compatible With DVD Video, CD, CD-R/RW
- New Slim Design - 68mm High
- 3D-PHONIC ● Resume/Digest/Zoom/Strobe Functions
- Optical And Coaxial Digital Outputs For PCM, Dolby Digital/DTS/MPEG



**£179.99**

### JVC Nicam VCR

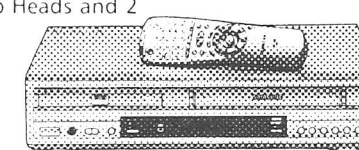
- Hi-Fi VHS Stereo with Nicam/A2
- VideoPlus Deluxe
- Auto Set
- NTSC Playback
- Power Save Mode
- B.E.S.T. Picture System



**£169.99**

### SAMSUNG DVD VCR Combi

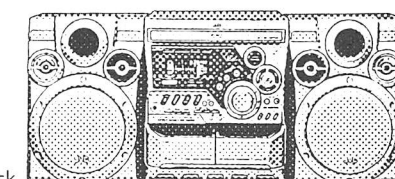
- DVD, CD, VCD, CD-R Playback
- 6 Head HiFi (4 Video Heads and 2 Audio Heads)
- Dolby Digital/DTS/MPEG-2 Out
- Nicam ● VideoPlus
- Zoom On Still/ Moving Picture



**£329.99**

### JVC Mini System

- Power Output: 50W x 2
- 3 CD Carousel Changer
- CD-R/RW Playback
- RDS Tuner ● Full Logic Control Cassette Deck
- Active Bass Extension



**£169.99**



- TOP BRANDS AT LOW PRICES
- SPECIAL OFFERS
- LOCAL DELIVERY
- GUARANTEED AFTER SALES SERVICE
- EXPERT STAFF

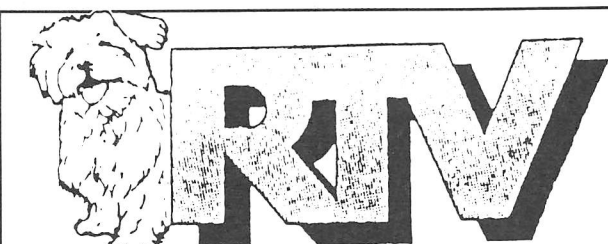
We are an independent retailer - with friendly local service and personal attention - but we're also members of EURONICS - Europe's biggest independent electrical buying group, which means we can offer you the very best deals on the highest quality brand names!



Your local

## EURONICS CENTRE

*Makes your money go further!*



23-27 Station Road, Ratby,  
Leicestershire LE6 0JQ

Tel: Leicester (0116) 2394544



## RATBY RECORD

Way back in the seventies a village magazine was launched, 'THE RATBY RECORD.' We have recently seen four issues. Does anyone remember any more?

It is reassuring to discover that the many organisations featured in the pages of the RECORD are still going today; Scouts, W.I., The Old Peoples Welfare Committee, The Village Society and Evergreens, to name but a few. Ratby is still a thriving community, not just a dormitory.

Some things have changed for the better. An article in ISSUE ONE promotes the Library in the Welfare Hall!

What is also noticeable are the businesses and shops featured in these four issues which no longer exist. Remember White Arches Caravans, Crocketts Hardware, the jeweller, J.T. Lee, Kenney Plastics, and Florence's Haberdashery?

We'd love to hear your memories of these recently disappeared businesses. Did you work for them perhaps?

And does anyone know whether a promised exhibition of William Astill's collection of old cameras, gramophones and other eclectic articles took place?

### A J Hurd MAAT FCCA

T/A

### Ask! Accountancy

Fully licensed and regulated

Sole Traders, Partnerships, Limited Co's  
and Individuals

Established local client base

Personal service provided at very  
competitive prices

For further details contact Andrew or Jo

on 239 5470 or 07946 614 930

## RATBY CO-OPERATIVE BAND A FAMILY AFFAIR

Well folks, let's start with the man in the middle, the MD, the stick wagger, call him what you will, Mr Kevin Steward. Kevin married Lindsay Grieg, (soprano) in 1998. Lindsay's father Malcolm plays cornet in the Mid Band. Phil Sturdy, (cornet) is married to Claire Sturdy (Percussion, formerly horn) Julia Hendry (horn) is the sister of Jo Langley (repiano). Julie Whittaker (cornet) is engaged to Matt Taylor (horn). Dick Kenney (cornet and Band Chairman) is the father of Julie Richards (horn) and Neil Kenney (baritone).

Now it gets confusing!

Geoff Newman (euphonium) is married to Sheralyn (cornet), sister of Kaye Root (baritone) and Steve Plant (percussion). Sheralyn is sister in law to Lynne Plant (horn), auntie of David Root (horn) and Becky Plant (trombone), and daughter of Phil and Violet Plant. Kaye is David's mother. Steve Plant is the father of Becky. And Geoff Newman is brother in law to Kaye, Steve and Lynne, uncle of Becky, David and Gary Root and Julie Plant.....

And that's before we get onto Mid Band and Junior Band!

(Who needs Dating Agencies? Editor)

## RATBY LOCAL HISTORY GROUP

The last meeting of the group was held on January 25th and the main part of the evening was taken up with a talk and display relating to old bottles. This was given by Roger Morley ably assisted by his wife.

The display was fascinating and Roger's presentation very humorous. He described scouring virtually the whole of the British Isles digging out ancient rubbish dumps.

Towards the end of the meeting, some of our members gave updates of projects in hand covering :- Recent field walk finds, including the exciting find of a Papal Bulla artefact. The indexing and archive binding of all of the past editions of Wot. A study of the effects of the 18<sup>th</sup> century enclosure act on Ratby,

A small working group is to be formed create a historical display to tie in with this year's Golden Jubilee activities. The Group is seeking information and / or the loan of photographs and items covering aspects of Ratby celebrations and other happenings during the period of the accession and coronation of Queen Elizabeth 2<sup>nd</sup> (1952/53). If any of our readers can help with this then please telephone us on 0116 - 2394168.

The next meeting of our Group is to be the Village Hall on Friday March 22<sup>nd</sup> at 7.30pm, this will include a talk by Richard Gill on Leicestershire's Memorial Buildings of the 1914/18 War

**'Imagination is more important than knowledge'**  
Albert Einstein



### A. H. COLEY

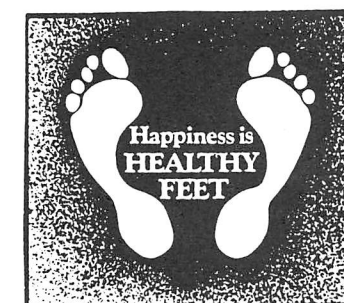
Plumbing & Heating Repairs,  
New Installations, Bathrooms, Showers,

For a full range of services contact:

4, Saxons Rise  
Ratby  
Leicestershire LE6 0NF  
Telephone: 0116-2394277

QUALIFIED VISITING CHIROPODIST

Peter S Comley MSSCh. MBChA



Markfield 01530 244887  
24 Hour Ansaphone

Offers a Convenient & Professional Service  
Registered Member of the  
British Chiropody Association

## DEADLINE FOR APRIL/MAY ISSUE

FRIDAY 15<sup>TH</sup> MARCH

Articles may be sent to  
3 Ingle Drive  
or left in the Library

EDITOR 239 3367  
ADVERTS 239 3279  
ARTICLES 239 4873

Accountancy, Payroll & Book Keeping  
For The Self Employed or  
Small Business.

Self Assessment Tax Returns, Vat, Computerised Payroll  
Accounts & Book Keeping

Confidential Service, Reasonable Fees  
No Job too Small

TEL. 01530 230 870

Mobile Phone Top-up  
Cards now available

VOXAPHONE  
CELLNET  
ONE 2 ONE  
ORANGE

Going Abroad? Don't  
forget we can offer  
the following

Travel Insurance  
Foreign Currency  
E111 Medical forms

Remember you can cash  
cheques and make deposits  
for these banks at your  
local Post Office

LLOYDS TSB CO-OP BANK  
A & L GIROBANK

RATBY  
POST  
OFFICE

Main Street  
Ratby  
Tel: 239 3001

And we also sell stamps!!!

## RATBY and DISTRICT ROYAL BRITISH LEGION POPPY APPEAL

The branch would like to thank all those who helped or donated towards the 2001 appeal. We raised £7619.64, which is £1000 up on the previous years.

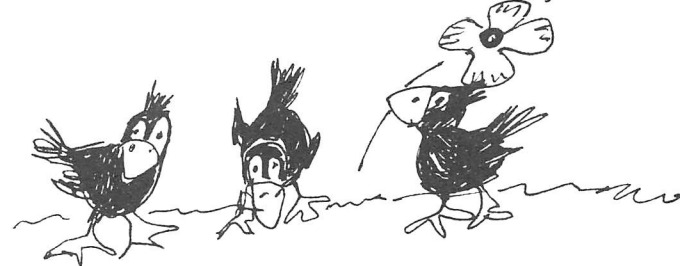
We meet at 8pm at the Groby EX-Service Club on the Second Wednesday of each month and would welcome new members.

Is there anyone with clerical skills who is prepared to act as Minutes Secretary for our Committee?

Please contact me on 239 4508.

Poppy Appeal Organiser.

Roy Holloway



## COUNCIL FOR VOLUNTARY SERVICE

I have recently taken on a voluntary job for the CVS. I've been asked to find out 'what goes on' in Ratby and feed this back. The information will be available for all interested at the Hinckley Offices.

I am interested in the groups/sports/activities etc. in the village, with contact addresses and numbers, as well as information of interest. (I have already noted the Orchard and Pond)

The CVS Officers would come to a meeting in Ratby to tell us what it's all about. They can offer support such as Display boards or Over-head Projectors for hire, and there may be grants.

If you have information for me, or wish to have a meeting, please ring me. Hoping to hear from someone soon. Thank you.

Gwen Holloway 239 4508

A copy of this issue of WOT may help! Editor.

## WANTED..OLD SPECTACLES!

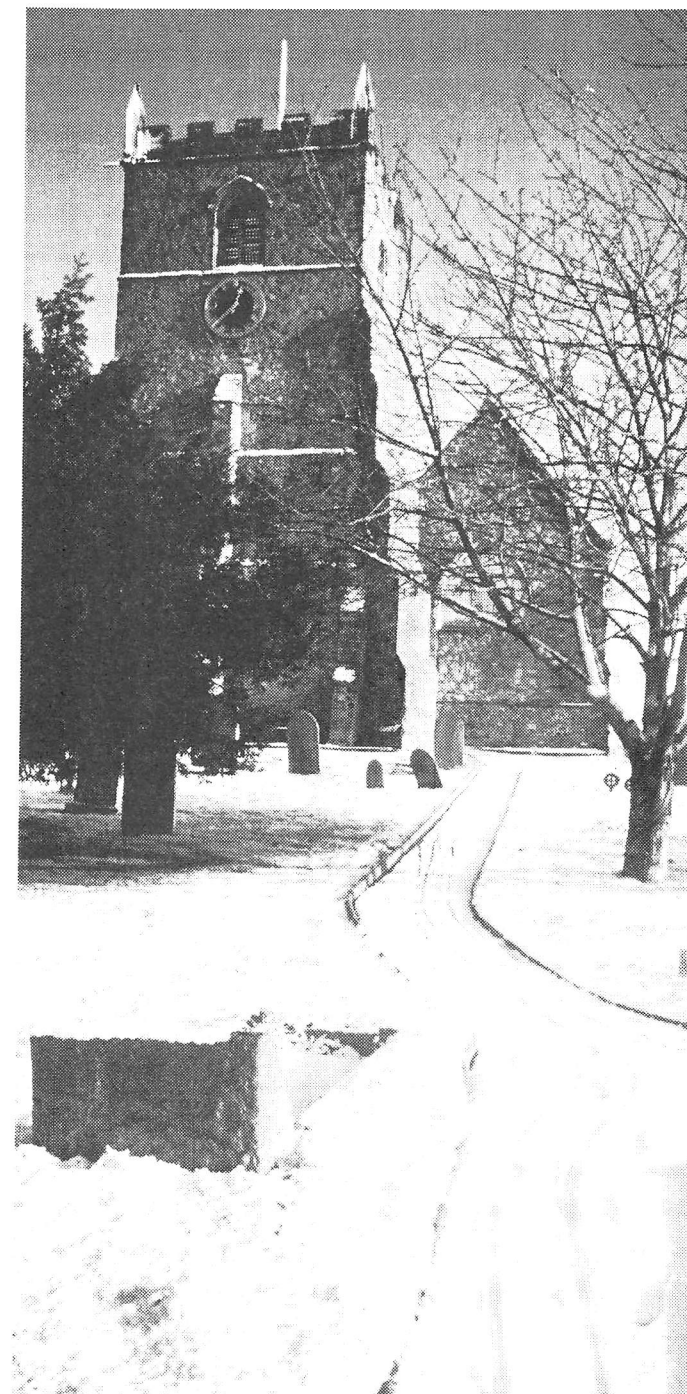
On Monday March 4<sup>th</sup> the Ladies Circle are holding an open meeting. The speaker, Mr Alan Pulford, a Blaby Rotarian will be talking about the Eye Camps in India.

Entry fee to the evening will be a pair of unwanted old spectacles! The Rotarians have been collecting spectacles for Vision Aid Overseas for many years.

They have also filled over 580 'Disaster Boxes', which will become Aqua Boxes with water Purifying equipment when emptied.

Alan will bring a box to show us, and tell us about his visits to India and meeting with Mother Teresa.

Come along, even without the glasses! The talk starts at 8pm in the Methodist Chapel.



JANUARY BRINGS THE SNOW!

**QUALITY  
AT THE  
RIGHT  
PRICE!**

LAMBSKINS  
BOWRON



**TREDPIRE**

UNDERLAY  
£2.50  
sq. yd.

*Duralay*

**FREE  
FITTING**

**Penthouse  
Carpets Ltd.**

GEORGIAN CARPETS  
ANTRON®

**STAINMASTER®**  
CARPET CERTIFIED BY DU PONT

AXMINSTERS SCOTCHGARD  
TWISTPILE BERBERS  
SAXONY HUEGA TILES  
SCULPTURED CUSHIONFLOOR  
FLOTEX

Thousands of Patterns  
to choose from

£3.99-£45.50 sq.yd.

**NEW!**  
Scotchgard  
**STAINRELEASE**

**Armstrong**



**SHOP AT HOME SERVICE  
PORTER'S DISCOUNT  
CARPETS**

121/3 STATION ROAD  
RATBY, LEICESTERSHIRE  
Tel: 2393238/2395202

**GAS  
APPLIANCE  
SERVICES**

- Appliance Servicing and Installation
- Breakdown and Repair Services
- Plumbing and Heating Installation
- Kitchen & Bathroom Design and Installation
- Quality Guaranteed by Experienced Engineers



**YOUR DOMESTIC GAS  
BOILER SERVICED**

6 SAXONS RISE, RATBY, LEICS. LE6 0NF

■ Tel: 0116 2393662

**£25  
+ VAT**

**THE SERVICE GARAGE  
MAIN STREET RATBY**

**M.O.T. TESTS  
CARS (PETROL - DIESEL)  
and  
MOTORCYCLES**

M.O.T. HOURS 9.00 - 4.15 Monday to Friday  
(Closed for lunch 1 - 2)

Telephone (0116) 2394966

**JULIE'S  
HAIRDRESSING**

MAIN STREET, RATBY

**Traditional & Modern  
Styling**

**Telephone: 2392406**



## RATBY VILLAGE EVENTS DIARY

The following details about planned events taking place in the village during year 2002 have now been made known the WOT team.

We anticipate that there could well be more still in the planning stage, further listings will be given in future editions as soon as we receive details of them.

| DATE & TIME   | EVENT                                      | ORGANISERS        | VENUE                   | TEL No  |
|---|--|-------------------|-------------------------|---------|
| <b>FEBRUARY</b>   |  |                   |                         |         |
| Wed 6 <sup>th</sup> 7.30pm  | Fashion Show                               | Ratby Band        | Band Room               | 2386749 |
| Wed 13 <sup>th</sup> 7.45pm   | Classical Guitar                           | Women's Institute | Village Hall            | 2387193 |
| Sat 16 <sup>th</sup> 10.00am  | Coffee Morning and Nearly New Sale         | Methodist Church  | Chapel                  | 2394432 |
| Tues 19 <sup>th</sup> 8.00pm  | AGM and Supper                             | Village Society   | Village Hall            | 2387240 |
| Sat 23 <sup>rd</sup> 10.00am  | Coffee Morning                             | Parish Church     | Church Rooms            | 2393009 |
| NB:- Coffee Mornings held at the Church and Chapel on alternating Saturdays thereafter. |  |                   |                         |         |
| <b>MARCH</b>  |  |                   |                         |         |
| Mon 4 <sup>th</sup> 7.30pm  | Open Evening -Talk by Mr A Pulford         | Ladies Circle     | Chapel                  | 2394432 |
| Sat 9 <sup>th</sup> 7.30pm  | Barn Dance                                 | Parish Church     | Church Rooms            | 2393009 |
| Wed 13 <sup>th</sup> 7.45pm   | Doodle-Do                                  | Women's Institute | Village Hall            | 2387193 |
| Sat 16 <sup>th</sup> 10.30am  | Spring Fayre                               | Sunday School     | Church Rooms            | 2388271 |
| Tues 19 <sup>th</sup> 8.00pm  | Talk – Beyond Aachen                       | Village Society   | Village Hall            | 2387240 |
| Fri 22 <sup>nd</sup> 7.30pm   | Memorial Buildings of 1914/18 War ( Leics) | History Group     | Village Hall            | 2394168 |
| Fri 29 <sup>th</sup> 10.00am  | Good Friday Activity Club                  | Parish Church     | Church and Church Rooms | 2393009 |
| Fri 29 <sup>th</sup> 7.30pm   | United Choir Led Service                   | Joint Churches    | Chapel                  | 2876035 |
| Sun 31 <sup>st</sup> 10.00am  | Easter Day Service                         | Parish Church     | Church                  | 2393009 |
| <b>APRIL</b>  |  |                   |                         |         |
| Wed 10 <sup>th</sup> 7.45pm   | Things My Mother in Law Didn't Tell Me     | Women's Institute | Village Hall            | 2387193 |
| Tues 16 <sup>th</sup> 8.00pm  | Talk - New England                         | Village Society   | Village Hall            | 2387240 |
| Sat 27 <sup>th</sup> 10.00 am   | Coffee Morning and Musical Weekend         | Methodist Church  | Chapel                  | 2394432 |
| <b>MAY</b>  |  |                   |                         |         |
| Wed 8 <sup>th</sup> 7.45pm  | Resolutions                                | Women's Institute | Village Hall            | 2387193 |
| Sat 11 <sup>th</sup> 2.00pm   | May Fayre                                  | Ratby School      | School                  | 2393610 |
| Fri 17 <sup>th</sup> 7.30pm   | Aspects of Leicester and AGM               | History Group     | Village Hall            | 2394168 |
| Tues 21 <sup>st</sup> 8.00pm  | Craft Demonstrations                       | Village Society   | Village Hall            | 2387240 |
| Sat 25 <sup>th</sup> 7.30pm   | Prom in the Garden                         | Church & Band     | Vicarage                | 2393009 |

### THOUGHT FOR THE NEW YEAR

**'Nothing would be done at all if we waited until we could do it so well that no-one could find fault with it.'**  
**Cardinal Newman**

| DATE & TIME                  | EVENT                           | ORGANISERS                       | VENUE                   | TEL No  |
|------------------------------|---------------------------------|----------------------------------|-------------------------|---------|
| <b>JUNE</b>                  |                                 |                                  |                         |         |
| Sat 8 <sup>th</sup> 7.30pm   | Junior Band Birthday Concert    | Ratby Band                       | Grobby College          | 2386749 |
| Wed 12 <sup>th</sup> 7.45pm  | Patchwork                       | Women's Institute                | Village Hall            | 2387193 |
| Sat 15 <sup>th</sup> 7.30pm  | Ratcliffe Chorale Concert       | Parish Church                    | Church                  | 2393009 |
| Sun 16 <sup>th</sup> Tba     | Old Village Walk - Pt3          | History Group                    | Village                 | 2394168 |
| Tues 18 <sup>th</sup> 8.00pm | For Valor - The story of the VC | Village Society                  | Village Hall            | 2387240 |
| Fri 21 <sup>st</sup> 7.00pm  | Music Festival                  | Ratby Band                       | Grobby College          | 2386749 |
| Sat 22 <sup>nd</sup> 7.00pm  | Music Festival                  | Ratby Band                       | Grobby College          | 2386749 |
| Sat 29 <sup>th</sup> 2.00pm  | Garden Fete                     | Parish Church                    | Vicarage                | 2393009 |
| <b>JULY</b>                  |                                 |                                  |                         |         |
| Sat 6 <sup>th</sup> 2.00pm   | Jazz in the Garden              | Parish Church                    | Vicarage                | 2393009 |
| Sun 21 <sup>st</sup> 2.00pm  | Outing to Calke Park            | Village Society                  | Details Tba             | 2387240 |
| <b>AUGUST</b>                |                                 |                                  |                         |         |
| Sat 10 <sup>th</sup> Tba     | Crow Pie Carnival               | Ratby Band                       | Ferndale Park           | 2386749 |
| Wed 14 <sup>th</sup> 7.45pm  | Enigma                          | Women's Institute                | Village Hall            | 2387193 |
| Tues 20 <sup>th</sup> 8.00pm | Leicester Town Hall             | Village Society                  | Village Hall            | 2387240 |
| <b>SEPTEMBER</b>             |                                 |                                  |                         |         |
| Wed 11 <sup>th</sup> 7.45pm  | Harvest Supper                  | Women's Institute                | Village Hall            | 2387193 |
| Tues 17 <sup>th</sup> 8.00pm | Talk – Trek in Peru             | Village Society                  | Village Hall            | 2387240 |
| <b>OCTOBER</b>               |                                 |                                  |                         |         |
| Sun 6 <sup>th</sup> 10.00am  | Harvest Festival Service        | Parish Church                    | Church                  | 2393009 |
| Wed 9 <sup>th</sup> 7.45pm   | AGM                             | Women's Institute                | Village Hall            | 2387193 |
| Tues 15 <sup>th</sup> 8.00pm | My View of Florence             | Village Society                  | Village Hall            | 2387240 |
| <b>NOVEMBER</b>              |                                 |                                  |                         |         |
| Sun 3 <sup>rd</sup> 10.30am  | Church Rededication             | Parish Church                    | Church                  | 2393009 |
| Sun 10 <sup>th</sup> 10.40am | Remembrance Day                 | Parish Church and British Legion | Church and War Memorial | 2393009 |
| Parade starts 10.15          | Service and Parade              |                                  |                         |         |
| Wed 13 <sup>th</sup> 7.45pm  | Christmas Cookery               | Women's Institute                | Village Hall            | 2387139 |
| Tues 19 <sup>th</sup> 8.00pm | Village Quiz                    | Village Society                  | Village Hall            | 2387240 |
| Sat 23 <sup>rd</sup> 11.00am | Autumn Bazaar                   | Parish Church                    | Church Rooms            | 2388271 |
| <b>DECEMBER</b>              |                                 |                                  |                         |         |
| Wed 11 <sup>th</sup> 7.45pm  | Christmas Party                 | Women's Institute                | Village Hall            | 2387139 |
| Sun 22 <sup>nd</sup> 6.00pm  | Carols by Candlelight           | Parish Church                    | Church                  | 2393009 |

### Other regular Village events include :-

Bingo on Monday evenings in the Village Hall

Indoor Carpet Bowls on Wednesday afternoons from September to April in the Village Hall.

Afternoon Tea Dances on alternate Wednesdays in the Church Rooms.

'Drop In' Coffee Mornings every Thursday morning in the Village Hall.



## QUEEN'S GOLDEN JUBILEE



The country's publicity machine has already started building towards what is hoped will be a very successful Golden Jubilee in June of this year. The major national celebrations will take place from Saturday 1<sup>st</sup> June to Tuesday 4<sup>th</sup> June. (The Tuesday is instead of the usual Spring Bank Holiday and the Monday is an additional Bank Holiday.)

Events in Leicestershire are expected to include the lighting of beacons on the Monday but it is hoped that many other special events will be held in the city and county. There will also be a special service of Thanksgiving held in Leicester Cathedral on the afternoon of Sunday 16<sup>th</sup> June and the Queen and Duke of Edinburgh will be visiting Leicester briefly on Thursday 1<sup>st</sup> August.

### So what should Ratby do to join in the fun?

Some initiatives are already in hand and, including the ideas from the discussion at the public meeting in January, this is an initial list of things that are going to happen:

- The Ratby Co-operative Band will perform a "Proms" concert in the vicarage garden on 25<sup>th</sup> May.
- The Parish Council will provide a Jubilee Commemorative medal, in a presentation case, to every child at Ratby Primary School.
- The Ratby History Group will be putting on a display to show Ratby at the time of the coronation - if you have any artefacts or photographs that you would be prepared to lend to the display please contact Doug Harwood on 2394168.
- We are hoping to have bunting along the Main Street and Station Road but we will need volunteers to help hang it!
- There will be a competition for the best decorated windows, with separate categories for homes and shops. We would also like businesses and homes to literally "fly the flag" for the time of the Jubilee.



There will be more details in the next issues of WOT and other ideas are still being considered. It is also hoped that people will develop their own ideas for celebrations...

## VILLAGE APPRAISAL

The public meeting held in January heard a presentation from Clare Filer, a Leicestershire Community Development Officer, who told the audience how village appraisals are set up and the benefits of running one.

Basically, an appraisal will give us the chance to look at our past, present and future and to find out what people want for the area in which they live and work. This will lead to a

series of projects to preserve, change or improve things for the future.

A further meeting has been booked for Wednesday 27<sup>th</sup> February to set up a steering group; many who attended the public meeting will become part of that group.

If anyone else would like to attend who could not come to the original meeting, please contact the Parish Council office.

## RATBY IN THE NEWS

The Leicester Mercury is including more and more Community News from around the county. For Ratby it is a useful way keeping you informed about things that are happening in the village in between issues of WOT, as well as telling the rest of Leicestershire what we are up to! So if you want to see snippets about Ratby in with all the other villages and hamlets, please keep Elaine Moore informed of what is going on, by ringing 2394737.



## CHRISTMAS LIGHTS

Although spring is fast approaching (we hope!), it is not too late to congratulate the winners of the Festive Window competition. First prize in the home window competition was awarded to Mrs Sutton of Markfield Road; second prize went to Jayne Lloyd of

Main Street and third prize to Racheal Busko of Park Road. In the shop window competition Geary's Bakery took first prize, with Johnson's of Stamford Street in second place and the Flower Shop in third. Well done to all who took part!

## BLOOMIN' FLOWERS

There are now 12 stone flower planters at various points in the village. These have been kindly donated by Alexandra Stone, for which we are very grateful. It is the intention to keep them planted all year round. We are also looking at the prospect of having summer hanging baskets on the lampposts along the main street through the village, but each lamppost has to be properly licensed first!



Last year our plans for floral displays in the village were not successful so we are hoping for better luck this year. Of course, whatever we do we will be reliant on volunteers for much of the work. We already have a few names of people who are willing to help and we would like to hear from any others who are interested. Please contact the Parish Council Office.

*We have a budget set aside for moderate expenditure to help with this project but see below for the story of somewhat more ambitious plans!*

## SNIPPETS

### Commemoration

John Cawrey has ensured that the site of the Ratby Working Men's Club will always be remembered. A commemorative stone is to be set into the wall fronting the new houses that have replaced the club building. Thank you, John.

### Loose rubbish

There have recently been problems with rubbish coming out of the top of dustbin bags as they are waiting to be collected, which then flies about and makes a mess. Please help by tying up the top of the bags.

### New windows

If you are planning replacement windows, watch out for new legislation planned for 1<sup>st</sup> April. We were unable to obtain details at time of writing but no doubt it will all become clear nearer the time.

## HOW THE OTHER HALF LIVE!

Readers of our reports in WOT or the minutes of our meetings probably think that the Parish Council work is very dull and boring...

It isn't of course, but some of the things we discuss and projects we get involved in look very pale in comparison with things that go on in other parts of the country...

- A village in Northumbria has been spending £15,500 each year on floral displays! This has, not surprisingly, led to it being a frequent winner in Northumbria in Bloom competitions but the council have now agreed that the money should be spent more evenly across the village!
- A town in Lincolnshire is trying to designate certain streets as no-drinking areas!
- A town in Norfolk is spending £8,400 on a net to protect the roof of the town hall from problems caused by pigeons nesting in the gutters and, um, depositing their droppings on the people below!



## RATBY NEIGHBOURHOOD WATCH

Some Neighbourhood Watch members recently attended an informative Police Seminar about Distraction Burglaries.

A bogus caller, claiming perhaps to be a Gas/Electric or Waterboard Official, distracts attention sufficiently to enable a partner to enter the home and steal anything to hand.

Often the theft is not noticed immediately and sometimes not reported due to embarrassment at having been taken advantage of in this way.

The people who commit this type of crime are usually very professional. Anyone keeping substantial sums of money at home is at risk as the thieves are aware of the places we would think of as safe to hide valuables.

Crimes of this type have taken place recently in Groby and Ratby, and nationally it is proving to be a major problem.

The seminar demonstrated ;

- The most vulnerable people are the elderly living alone
- Action to protect the home, such as door chains and importance of checking identity cards.
- The part Neighbourhood Watch can play in helping combat this sort of crime.

If you feel at risk, or are aware of someone who may be vulnerable, contact Neighbourhood Watch on 2394450, and all possible will be done to help.

## LOROS NEWS

Father Joe Carty has retired as Roman Catholic Chaplain to LOROS. He celebrated in style by becoming this year's winner of the LOROS Lottery Bumper Prize of £5000!

Each year from September extra tickets are available for this bumper draw held on the last Friday of the year.

You too could enjoy such success, with a 1 in 93 chance of winning, and the opportunity to support a charity run by local people for local people.

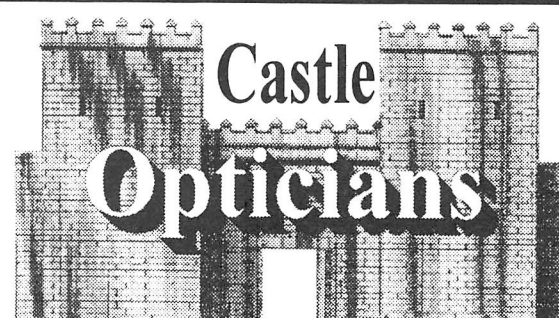
**Ring 0116 231 8430.**

## PICTURE FRAMING LOCAL BESPOKE PICTURE FRAMING SERVICE

FREE HOME COLLECTION, DESIGN AND  
DELIVERY

GALLERY STANDARD AT AFFORDABLE  
PRICES!!

**CALL CHRIS on 0116 2387458 ANY TIME**



## An Independant Practice

Eye Examinations  
Frames & Lenses at Competitive Prices  
Prescription & Non-RX Sunspecs  
Daily & Monthly Contact Lenses  
New Varilux Panamic Varifocals  
Any Opticians Prescription Welcome

Open Mon-Sat Closed Wednesday

**47 Main Street, Kirby Muxloe  
Leicester. Tel:0116 239 4288**

## PIP'S PRIVATE HIRE

**0116 239 0909**

**GROBY \* RATBY\* KIRBY**

**AIRPORTS \* LOCAL & DISTANCE**

• B'HAM & E.M.A.

\* OAP PINK TOKENS TAKEN\*



## OAKLANDS RIDING SCHOOL

**WE CATER FOR EVERYONE  
FROM THE NOVICE TO  
EXPERIENCED RIDER**

All Weather Riding Area

Ring Julie on 238 7570



## RATBY PHARMACY

58 MAIN STREET

LE6 0LL

Tel. (0116) 239 3139

**DISPENSING, FAMILY HEALTH CARE  
and ADVICE, PHOTOGRAPHIC DEV.**

**\*OPEN ; Mon.-Fri. 9am -1pm, 2pm-6pm\***

**Saturdays 9am-12.30pm**

**COLLECTION of PRESCRIPTIONS from  
L.F.E. and GLENFIELD SURGERIES**



## Pabari's Rathby News

5 Station Road, Rathby.

Tel. 0116-2393267



**For the Largest Selection in Rathby of  
Beers, Wines and Spirits.**

**A vast choice of Confectionery and Soft Drinks.**

**A Large variety of Greeting Cards, Wrapping Paper  
and Stationary.**



**Newspapers & Magazines.  
Delivered to your door daily.**



**We are the agents for  
SKETCHLEY DRY CLEANING.**

**Video Rental & Photocopying also available.**

**Opening Hours:**  
Mon - Fri 6.15 am to 1 pm & 2.30 pm to 10 pm.  
Saturday 6.15 am to 10 pm.  
Sunday 7.30 am to 2 pm & 7 pm to 9 pm.



**COME IN AND SEE FOR YOURSELF**

## RECIPE BARA BRITH

Bara Brith means 'speckled bread', and is common in all Celtic countries. In Ireland it is called Barm Brack, and in Brittany Morlaix Brioche. It is usually made with yeast, but here is an alternative method.

### Ingredients

Makes 1lb loaf. Gas 3 or 325C/170C

110 gr. (4oz) sultanas

110 gr. (4oz) raisins

140ml (1/4 pint) cold tea

1 tablespoon marmalade

110 gr. (4oz) demerara sugar

230 gr. (8 oz) self-raising flour

1 teaspoon mixed spice

1 egg, beaten

### Method

1. Mix sultanas and raisins together in a bowl, cover with tea and leave to soak overnight
2. Add marmalade and sugar to fruit
3. Stir in flour and spice and mix well
4. Add beaten egg and blend well
5. Grease or line 1lb loaf tin
6. Spoon mixture into tin and smooth
7. Bake for 60-70 minutes in centre oven.
8. Cover loosely with foil after 30 minutes to prevent over browning.
9. Leave in tin for 10 mins. before cooling on wire rack
10. To freeze, wrap in greaseproof paper when cold and freeze for up to 3 months.

**Scrivener**

