



WOT!

About Ratby

PUBLISHED BY RATBY SCOUT GROUP

WHODUNNIT?

MURDER IN RATBY!

Whetstone Drama Group brought their intriguing Murder Mystery 'The Will of the Dead' to Ratby Church Rooms on Saturday January 17th. Between three courses during supper the audience was entertained by an engrossing and well-acted performance, and invited to try and deduce who carried out the dastardly deed. Information on the different characters, notepads and pencils were provided. The room buzzed with discussion and speculation.

Just before the last act everyone was asked to write down their verdicts together with a note on their reasoning. And all was then revealed, with prizes awarded for the 'sleuths' who had most accurately predicted the identity of the 'murderer' and their motivation.

As the evening drew to a close Reverend Peter Hooper thanked the Drama Group, who had performed for just a modest donation, as well as the caterers, helpers and audience.

The Whetstone players told Wot's 'reporter' that they had performed the play at many venues around the county, but that this one 'had been the best, with an audience that listened attentively, and a great meal.'

The group have other productions coming up: 'The Corn is Green' on April 16th to 18th and the Youth Group present 'Oliver' in May. Check out their website: www.whetstonedramagroup.co.uk



GREAT CAKE BAKE

On Friday 28th November a coffee morning and Great Cake Bake was held at Ratby Sports Club. £380 was raised for CRY (Cardiac Risk in the Young).

Every week in the UK at least 12 apparently fit and healthy young people die of an undiagnosed heart condition. Judy and Dennis Brookes' son Greg was one of them.

In 2009 Greg was a healthy young man who led an active sporting life. He played golf, regularly visited the gym and was a kick boxer. He had been teaching a kick boxing group for young people on the day that he unexpectedly collapsed and died.

The heart condition is associated with changes in the heart's rhythm, and most commonly occurs after exercise or during sleep and there are usually no warning signs.

The summer following Greg's death Rothley Golf Club organised a charity Golf Tournament in remembrance of Greg, who had played for their under 35 team. The club had one of his trainers cast in bronze as the Tournament Trophy. Judy and Dennis had heard about the charity CRY, and so half of the tournament proceeds were donated to this.

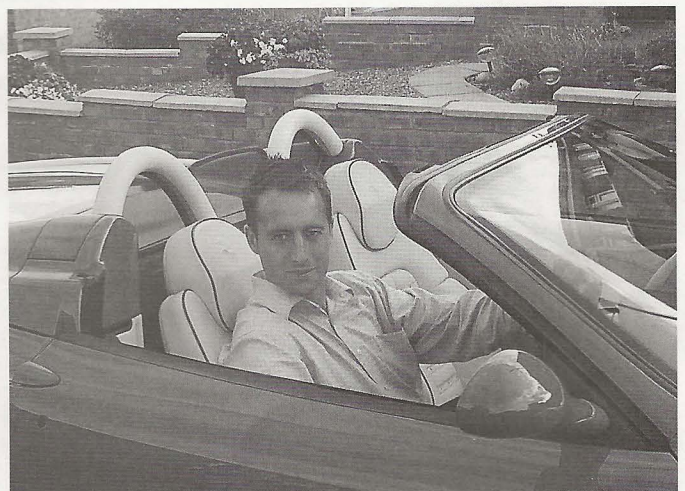
The following November the Brookes decided to take part in the Great Cake Bake to raise funds for CRY. This has become an annual event for them, initially hosted in their own home. The move to Ratby Sport's Club last autumn was appropriate, as many of the young victims of this cardiac condition are involved in some form of sport.

Cry is a national charity saving young lives and supporting those affected by sudden cardiac death. One aim of the charity is to subsidize and expand the CRY National screening programme for all young people aged between 14 and 35.

If you are interested in finding out more their web site is: www.c-r-y.org.uk

You can also donate to CRY online.

Judy says that organizing the event has helped them to focus on helping others, and to help prevent other families from going through the same tragic situation. She and Dennis would like to thank everyone involved who supported them by bringing cakes, donating money or enjoying a coffee and a chat with friends on the day. A special thank you to those who helped at the event and Steve at the Sports Club who suggested that they 'go global' and hold it there. This was the most successful Cake Bake to date.



RATBY LOCAL HISTORY GROUP

The next meeting of Ratby Local History Group will be on Friday 24 April 2015 at 7.30pm when Richard Buckley will give a talk on "The Discovery of Richard III in a Leicester Car Park".

His talk will be followed by a short presentation by Michael Ball on "Richard III and the Hastings and Grey Families".





**OAKLANDS
RIDING SCHOOL**

**WE CATER FOR EVERYONE FROM
THE NOVICE TO EXPERIENCED RIDER**

All weather riding area
Ring Julie on 238 7570



RATBY SCOUT AWARDS

Ratby Scout Group had a great autumn, which began with a visit from the Deputy District Commissioner to present Wood Badges (representing the completion of a leaders training) to:

Jackie Edwards (Beaver Scout Leader)
Adem Veli (Assistant Beaver Scout Leader)
Abbey Murby (Cub Leader)
Tom Hickey (Assistant Scout Leader).

Tracey Payne (Explorer Scout Leader) received her 5 year service award and Steve Pemberton (Assistant Scout Leader) received his 10 year service award.

District Awards

1st Ratby's team received many awards at the 2014 District Awards Night at the County Cricket Ground last October.

The WOT team were recognised for all their efforts for the following categories, having supported the Group over the past 29 years.

Alan Sims- executive members

Sue Boud -outstanding group support

Carol Payne -outstanding group support

Dave Gould -going the extra mile

The Leader Team were recognised for the following:

Justin Garratt (Assistant Group Scout Leader) going the extra mile. Justin also received the Chief Scout's commendation for good service from the District Commissioner

Lara Foster (Scout Leader) and David Payne received 20 year service awards.

DEADLINE for issue 171
APRIL / MAY 2015
FRIDAY 13th MARCH

EDITOR 239 3367

ADVERTS 239 3279

ARTICLES 239 4873

Articles may be sent to 3 Ingle Drive

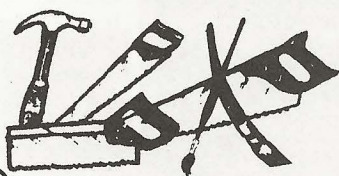
Or Email: sueboud@hotmail.com

A.GOODWIN

CARPENTRY, JOINERY
PROPERTY REPAIRS

0116 2387316

MOBILE: 0777 9872211



RATBY WASSAIL

Ratby Community Orchard Group organised their annual Wassail on Saturday 10th January. As usual everyone gathered at The Railway to practice the wassail songs before processing noisily as is the tradition down to the Orchard.

This year the new 'Ratby Wassail' was performed for the first time. With words by Dennis Brookes set to music by Geoff Newman, Conductor of Ratby Mid Band. Members of Ratby Co-operative Band led the Wassailing at the Orchard. The wassail bowl brimming with mulled cider was passed around, and the trees were 'toasted.'

Once again a good crowd braved the cold wind to take part in this traditional custom, which began in Ratby in 2002.

Pictured below are members of Ratby Band getting us all warmed up in The Railway.



**WATCH
BATTERIES
& STRAPS**

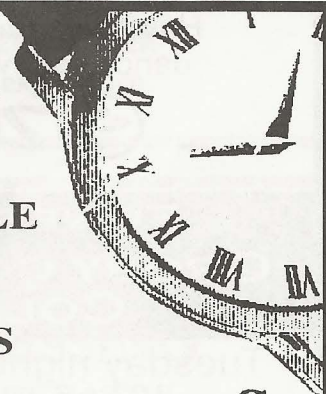
**FITTED WHILE
YOU WAIT**

ALL BRANDS

SYKES JEWELLERS

8 Bradgate Road, Anstey
Tel: 0116 236 2510

www.sykesjewellers.co.uk



VILLAGE SHOW

Ratby Sports' Club is once again the popular venue for Ratby's Annual Show which takes place on Saturday August 8th at 2pm. The club's doors will be open to receive your show entries on the evening of Friday 7th, and the morning of the show.

Gardening Tips

1. Start a very basic compost simply by piling up leaves and grass clippings. If you do nothing else, you can dig out compost after about six months of warm weather.
2. For something a little more thought-out, start by finding a good place for your heap – somewhere that is handy for the garden and kitchen, yet not prominently in view.
3. To enclose that compost with a simple frame – loosely roll 2m (6ft) of chicken wire to make a ring. Leave three cut ends of wire exposed to secure the ring to itself and stand it up.

Get Fit And Healthy

with Charlotte Tomlinson, MSc

ZUMBA DANCE FITNESS! GROBY VILLAGE HALL

Monday nights 5:30-6:30pm
£4 per class or 10 classes for £30

Have fun, burn calories and
dance your way to fitness!



FITNESS YOGA GROBY COMMUNITY COLLEGE

Tuesday nights 6:45-8:00pm
£5 per class

Get fitter, stronger, leaner,
more supple and finally relaxed!

www.fit4dance.com

Email: charlotte.tomlinson@hotmail.com

Tel: 07939 588092

WHAT ARE YARD SALES?

'Yard Sales' are events arranged within a community for the sale of used goods by private individuals, rather like a car boot sale at your own home. Sellers are not required to obtain business licences and publicity for the event is arranged by the organiser. Typically the goods in a yard sale are unwanted items from the home. The goods are sometimes new, like-new, or just usable, these might include old clothing, books, toys, tools, sports equipment or furniture. Some of these items are offered for sale because the owner does not want or need

the item to minimize their possessions or to raise funds. The seller displays their wares to the passers-by on their driveway, in their garage or even in a car boot if it is safe to do so (naturally, we do not encourage sellers to invite prospective buyers in to their homes). It is up to the seller to agree the sale price.

If this sounds like a good way to have a spring clean and raise a little cash - and you live in Ratby - why not put **Bank Holiday Monday 4th May 2015** in your diary? More details of how the event is going to run will be published nearer the time. This event is being organised by the Eco-Team at St Philip & St James Church, Ratby, the aim of the day is to reduce the amount of useable items going to landfill, to give good quality goods a new home thus helping to preserve our wonderful World.

Further details: **Sue Hooper 0116 239 4606**



Need a Helping Hand?

Fed up of trying to fit everything in, and work?
Or is it all becoming a burden?
We provide a friendly and efficient service.



"Not just a cleaning company."

- Homes cleaned
(All cleaning products included.)
- Properties cleaned between Lettings, or while on holiday.
- Bed Linen Changed
- Ironing (collection & delivery included)
- Fully insured.

Call Lisa on 0116 235 6065 or 07711 554609

SIMPLY REIKI

It's the time of year when New Year resolutions have faded away and yet we all still feel the need for changes and improved energy in the coming year.

Perhaps you were attracted to the new Reiki advert in Wot! and its mention of 'well-being.' Maybe you were too busy to think about finding some time for yourself, or to discover what this treatment might involve.

Well here at Wot! we decided to explore what it is all about by chatting to Noreen who is offering this service.

'Simply Reiki' had already been well established elsewhere in the County eight years ago, where Noreen had a regular clientele including nurses and others in stressful professions who found a greater sense of wellbeing and improved health, including better sleep after the treatment.

This opportunity has now arrived in Ratby since Noreen moved here recently. Clients can visit Noreen's relaxing treatment room or enjoy her healing in the comfort of their own home. And she is offering a taster session of 45 minutes for just £7.50. Following treatments will still be priced competitively as she wants to give as many people as possible the benefits she received from her own first Reiki session.

She says that at a time when she was feeling particularly low she felt compelled to contact a long lost friend. It so happened that this friend had become a qualified Reiki practitioner. Noreen was offered a treatment, and was transformed. So she herself undertook two years training in three stages of Reiki. Noreen's leaflet which was popped through doors some time ago informs us that 'Reiki assists the body's natural ability to heal itself. It is a complementary method of healing as it not only brings focus, clarity and a deep sense of wellbeing but can also help you to cope with health issues such as Stress, High Blood Pressure, Lack of Confidence, Anxiety, Depression, menstrual pain and symptoms, Insomnia, Grief and many other conditions.' Sessions are non-intrusive, no touching is involved, and clients remain fully clothed.' There is a saying that 'Reiki will find you.' Noreen says that was true for her. Perhaps reading this will be the way you are 'found' and inspired to discover how to be transformed by the universal life energy which is all around us.

MELSWAY

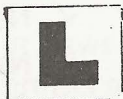
DRIVING SCHOOL Est. 1991

Mel Shipley D.S.A. A.D.I. M.I.A.M.

Pass Plus Registered

***Complete Beginners* Part trained*
Motorway Tuition and Refresher lessons.**

**Telephone 238 6149
3 Barton Close, Ratby.**



Simply Reiki



Reiki is an Energy Healing Treatment that works holistically on the whole body, mind and spirit, creating a deep sense of wellbeing.

For more information and to book a 45 minute treatment for £7.50

Telephone Noreen on 0116 239 0062

**QUALIFIED REIKI HEALER
with 8 years experience.**



**FEEL
GOOD
FEET**

HOME VISITS FOR:

- NAIL CUTTING
- VERRUCAE
- CORNS
- CALLUS
- CRACKED HEELS
- INGROWN NAILS
- FUNGAL NAILS
- DIABETES CARE

JACQUI
COOPER
DipCFHP MPSPact
07804029231



JULIE'S HAIRDRESSING MAIN STREET RATBY

Traditional and Modern Styling

Telephone 239 2406

**Win Baillie
In Memoriam**
17th January 2015

How did she live?

Not, how did she die, but how did she live?
Not, what did she gain, but what did she give?
These are the units to measure the worth of a woman or man, regardless of birth.
Not what was her church, not was her creed.
But had she befriended those really in need?
Was she ever ready, with a word of good cheer to bring back a smile, to banish a tear?
Not 'what did the bit in the newspaper say?'
But how many were sorry when she passed away.

Anon.

RATBY PHARMACY

10 MAIN STREET LE6 0JG

***FREE PRESCRIPTION COLLECTION**

SERVICE from all surrounding surgeries.

JUST PHONE US ON 239 3139 with your requirements. We will process your prescription with the surgery.

All you do is COLLECT IT from us, or we can deliver to your home if needed.

**You can e mail us with requirements;
ratbychemist@aah-n3.co.uk**

Pabari's Ratby News. (Est. 25 years)

5 Station Road, Ratby, Leicester. LE6 0JQ.

Tel: 0116 239 3287.



Sweets, Confectionery,
Tobacco, Soft Drinks & Milk.



Top Up Your Mobile Phone, Electric & Gas.

A Vast Selection of Beers, Wines & Spirits

We Deliver Daily, Evening &
Sunday Newspapers.

A wide choice of Magazines,
Greeting Cards &
Stationery,



Play The National Lottery Here

Now !

Opening Times:-

Mon-Fri :- 5.00am to 1.00pm, then 2.30pm till 10.00pm

Sat:- 5.00am through until 10.00pm

Sun:- 7.00am to 2.00pm, then 7.00pm till 9.00pm



UPDATE on BENCHES

Thank you very much to the Ratby Thursday Bingo players for their strong views on the provision of replacement and new village benches.

Those comments were passed on to Ratby Parish Council (20th November 2014).

Your vehement preference for wooden seats (not metal!) and requests for bus shelters at Lee Rise/Nicholas Drive and also on Charnwood have been lodged. We have requested that Charnwood (which in initial work had received "low priority" status) be re-examined in view of your comments on the number of elderly persons' bungalows which are served there by bus.

What was also invaluable was your preference for benches with arms and not necessarily with backs, to assist people in getting up from them.

One catalogue of benches has already been obtained and sites are being identified and prioritised. Hopefully a wide range of seats will be examined and subjected to a "comfort test" before purchase.

Your parish council is now progressing this matter on your behalf. I hope you do not have to wait too long. Best wishes to all.

Rieta Simmonds.

**Ratby Post Office
& Village Store**

- ✓ Fresh & Frozen Groceries
- ✓ Household Items
- ✓ Newspapers & Magazines
- ✓ National Lottery
- ✓ Confectionery, Snacks & Drinks
- ✓ Phone Top-ups, Gas & Electric
- ✓ Greeting Cards & Stationery
- ✓ Beers, Wines & Spirits
- ✓ Dry Cleaning
- ✓ Free 24 Hour ATM
- ✓ **Many, Many Offers & Bargains!**

30 MAIN STREET, RATBY, LEICS

TEL: 0116 2393001

Shop Hours:

Mon to Sat

6:00am – 5:30pm

Sun 7:00–12:30pm

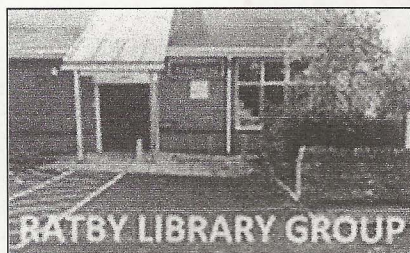
Post Office Hours:

Mon to Fri

9:00am to 5:30pm

Sat 9:00am to 12:30pm

RATBY LIBRARY GROUP



A significant change occurred at the first Ratby Parish Council meeting of 2015 in that it could not press

forward with its own bid for the management of our library but instead would support the Ratby Library Group. With a single supported bid for control of our library, this is good news for our library project and for the village as a whole.

We have arranged for a questionnaire to be produced and inserted into the 'Your Local' magazine; the publication date for WOT made it impossible for this magazine to carry the questionnaire.

PLEASE take a little of your time to complete your responses to it and drop it back into any one of the 4 collection boxes to be positioned around the village? Thanks to those businesses, which have agreed to host them.

Questionnaires need to be returned back by 14th February by depositing them in any one of the 4 collection boxes sited at:

- **Library**, Main Street
- **Post Office**, Main Street
- **Moore's Store**, Station Road
- **His & Hers Hairdressing**, Station Road

It's hugely important that we have your views and suggestions. This is a community project and we want and need to know what you think. It's a simple questionnaire, mostly requiring tick box answers and investing 10 minutes of your time will give us valuable information not otherwise available to us.

Ratby Library Group's core plans are to –

1. increase the hours the library is open from 15 to over 40, across 5¹/₂ days weekly
2. run the operation with the aid of trained volunteers, which will help bring villagers into the heart of this project

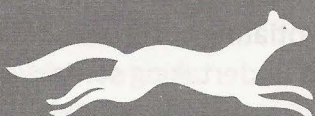
3. secure reductions in costs by achieving charity status, renegotiating costs of existing or new suppliers and undertaking some work using volunteers
4. run a cafeteria within the building to create a community hub; a friendly, light, bright, comfortable and safe space for all ages to relax, work, browse, read, all whilst enjoying a warm drink and perhaps a cake, pastry or sandwich
5. improve the wifi reception, for those who don't have, don't want or can't afford broadband reception at home
6. run a wide variety of events, that, again, will encourage villagers and others through the doors
7. offer the parish council the opportunity to support the project with cash – with no need to raise tax - by renting office space at a cost recoverable from income from its existing house, whilst maintaining ownership of its capital asset at 13 Station Road

Taking the validated accounts provided by the County Council for 2013-14 and adding in an annual inflation figure over 7, 10 and 15 years and with the changes above, we believe the library could be sustainably funded without recourse to asking residents for additional tax monies, beyond the £26,000 they already pay.

But this very much relies on residents supporting the project and encouraging non-residents to drop in. The questionnaire is designed to ensure we develop the library in ways residents will support and which will attract custom from villagers and those outside Ratby. **Please complete yours and drop it off by 14th February.**

We look forward to receiving your completed questionnaire. We aim to publish details of the overall response in subsequent issues of free magazines.

Graham Stanley
LEAD, RATBY LIBRARY GROUP
for Ratby Library Group Management Team
ratbylibrarygroup@outlook.com



Leicestershire Lettings & Sales

0116 2355232

www.leicestershirelettings.co.uk

We WILL SELL your property for £1000



NO VAT NO SALE NO FEE

www.leicestershirelettings.co.uk

3 Staddon Road, Anstey, Leicester
Leicestershire, LE7 7AY

BROKEN iPhone?

Also repairing...

iPod Touch
iPad
Samsung ■ HTC
Blackberry
Playstation 3
Xbox 360
PSP
Nintendo DS ■ Wii

- Fast, Friendly Service
- All Repairs Guaranteed
- Price Match Promise

**FOR AN
INSTANT QUOTE CALL
0116 286 6447**

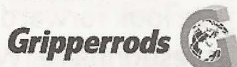
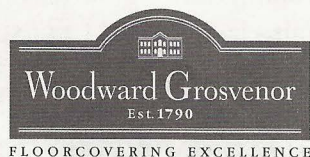
Unit 33, King Street Buildings, George Street Entrance,
Enderby, Leicester LE19 4NT
www.ipaqrepair.co.uk

Porter's Discount Carpets

121/3 STATION ROAD, RATBY

Telephone 239 3238 or Mobile 07872 488271

SHOP AT HOME SERVICE



NOW INCLUDING L.B.P. Tiling SPECIALISTS IN CERAMIC AND PORCELAIN TILING