



WOT!

About Ratby

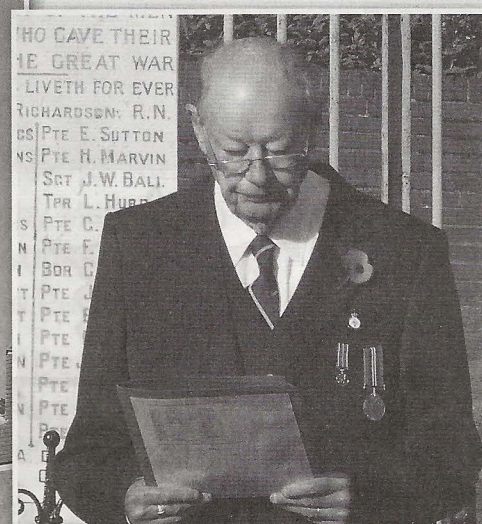
PUBLISHED BY RATBY SCOUT GROUP



REMEMBERING 1914—2014



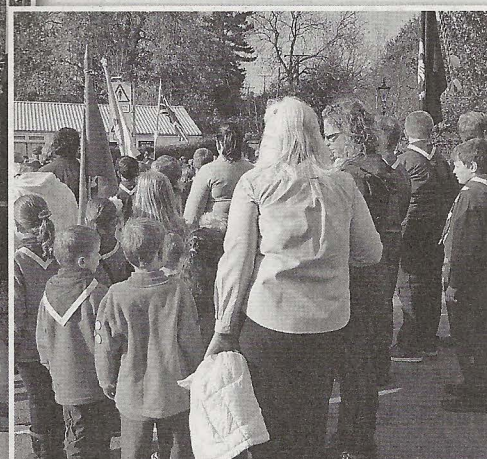
Members of Ratby Band lead the procession from the Church down to the War Memorial.



Jack Haywood reads the names of the fallen from World Wars 1 and 2 and Afghanistan.



The Standard Bearers



Ratby's uniformed groups

On Sunday November 9th villagers gathered for a service of Remembrance at the War Memorial

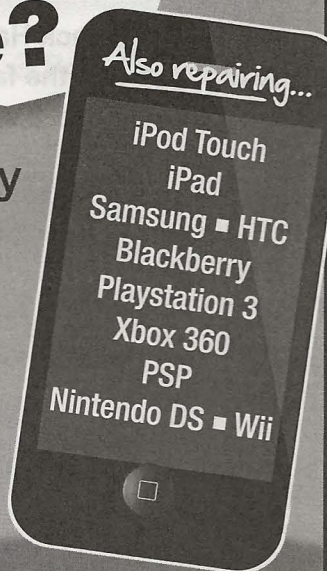
RATBY REMEMBERS

Following the Remembrance Service the Village Hall was open for refreshments. Ratby History Society had organised a fascinating exhibition of photographs and stories about Ratby men who had served in World War 1.



BROKEN iPhone?

- Fast, Friendly Service
- All Repairs Guaranteed
- Price Match Promise



FOR AN
INSTANT QUOTE CALL
0116 286 6447

Unit 33, King Street Buildings, George Street Entrance,
Enderby, Leicester LE19 4NT
www.ipaqrepair.co.uk

A FAMILY BUSINESS

Mel Shipley set up his driving instruction business, 'Melsway', back in 1991. Over the years his reputation has grown, and he has reluctantly had to turn potential clients away or pass them on to others. His daughter Sally joined him as his business partner in October 2012, after qualifying as an instructor.

He says, 'Now that Sally is working with me, if I can't fit someone in around my busy work schedule then I pass them on to Sally and likewise if Sally can't fit someone in she passes them to me. I have found Sally has been an asset to the business and I'm pleased and proud to have her working with and alongside me.'

Mel works mostly Monday to Friday 9 to 5 but still does some evenings and Saturdays. Having two young children, Sally works less hours and her work is mostly on Saturdays, Sundays, the occasional evening and now that her children go to school and playschool she also does the occasional lesson during school hours.

Most of their work is through 'word of mouth' from satisfied and successful clients.

You may have noticed two different cars bearing the 'Melsway' sign around the village, well this explains why!

Pictured are Mel and Sally with the cars.



**Merry Christmas
to all our readers**



AN AMAZING EVENT!

Ratby Family take the Guide Promise.

Ann Downs, Bardonia Division Commissioner was present at Ratby Brownies on Tuesday November 4th. She came specially to hear the Guide Promise from three members of one family, a very unusual occurrence.

Mum, Clare Henderson, Tawny Owl, has become a Brownie leader after seeing the article in Wot! calling for volunteers to keep the group open. She had previously been involved in the group as a parent helper when her daughter joined Brownies years ago.

Daughter Jessica, 15, made her promise as a young leader, Sooty Owl, and younger daughter Isabelle, aged 9, made her promise as a member of the group.

During the evening the Brownies practiced marching and Standard bearing in readiness for the village Remembrance Parade, as well as enjoying some lively games.

The group is thriving, meeting at 6.15 on Tuesday evenings in Ratby Church Rooms. Snowy Owl, Angie Cain, who became involved in the group after just one visit in July tells us that there are plans to start a Rainbows section for younger girls.

Check out the inspiring Guide website for more information about guiding;
www.girlguiding.org.uk

Pictured are Jessica, Mum Clare, and Isabelle.
Photo courtesy of Photorod Sport and Studio;
www.photorodd.4t.com



CHRISTMAS in RATBY

Sunday 7th December

Christingle Service

10am at the Parish Church

Sunday 14th December

Traditional Carols by Candlelight

6.30pm at the Parish Church

Wednesday 17th December

Carols around the Christmas Tree

6.30pm (meet in the School Playground)

Sunday 21st December

Family Carols with Ratby Junior Band

10.00am Ratby Methodist Church

Messy Christmas

3.30pm at the Parish Church

Monday 22nd December

Sing Christmas with BBC radio Leicester

7pm at the Bulls Head Pub

Christmas Eve 24th December

Crib Service.

4pm at the Parish Church

Midnight Service & Christmas Communion

11.30pm at the Parish Church

Christmas Day 25th December

Christmas Day Communion

8am at the Parish Church

Family Christmas Celebration

10.30am at the Parish Church

Christmas Day Family Service

9.30am Ratby Methodist Church

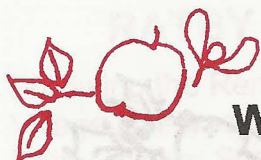


OAKLANDS
RIDING SCHOOL

***WE CATER FOR EVERYONE FROM
THE NOVICE TO EXPERIENCED RIDER***

All weather riding area
Ring Julie on 238 7570





WASSAIL!



Join Ratby Community Orchard group for our annual 'Wassail' on Saturday 10th January.

We'll meet at The Railway around 7 pm, from where we'll process to the Orchard, banging drums and rattling pans to toast and wassail the trees.

Wrap up warm and bring a torch with you!

A.GOODWIN

CARPENTRY, JOINERY
PROPERTY REPAIRS

0116 2387316

MOBILE: 0777 9872211



FORTHCOMING EVENTS at ST PHILIP & ST JAMES PARISH CHURCH

MURDER MYSTERY EVENING with meal.
Performed by 'The Whetstone Players' on
Saturday 17th January in the Church Rooms

RATBY BAND NEW YEAR CONCERT
Saturday 21st February in the Parish Church

FORTIES NIGHT – meal and entertainment,
period dress encouraged!
Saturday 28th February in the Church Rooms

GARDENERS QUESTION TIME – Hosted by
BBC Radio Leicester on Thursday 16th April in
Ratby Parish Church

GARAGE SALES IN RATBY – Bank Holiday
Monday 4th May. An opportunity to sell your
unwanted belongings from the comfort of your
garage or drive. Organised by Ratby Church
Eco-Team.

*Details on all of the above available from
Church noticeboards or 0116 239 4606*

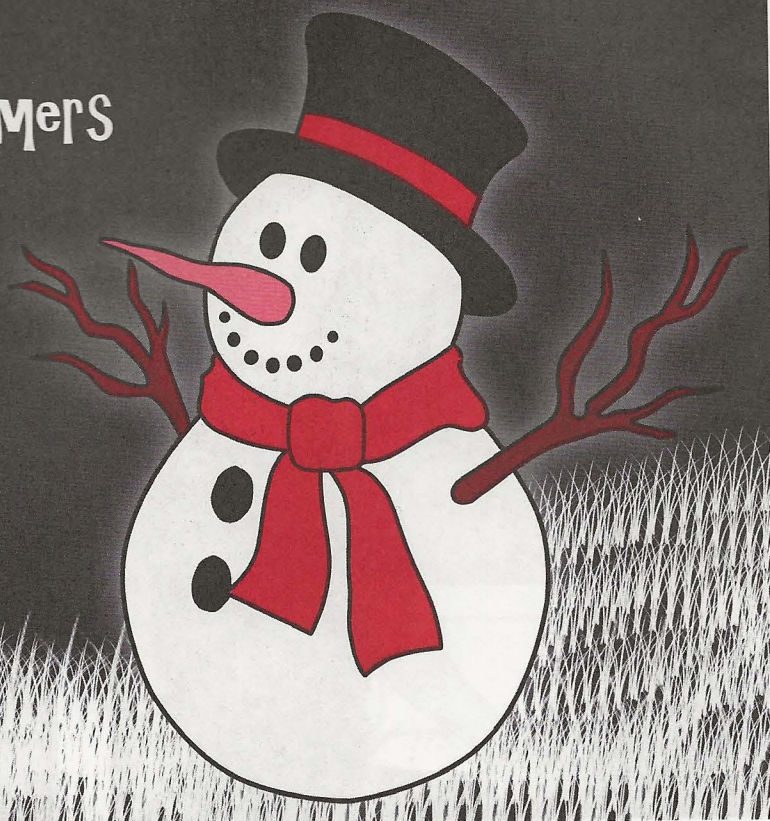


PORTER'S DISCOUNT CARPETS

121/3 Station Road Ratby LE6 0JQ TEL: 01162393238 MOBILE: 07872 488271

WISHING ALL OUR CUSTOMERS

"A Merry Christmas
And A
Happy New Year"



RATBY APPLE DAY

This year's Apple Day on Sunday October 12th was a great success. A good crowd turned out to enjoy a range of activities and games, all with an apple theme.

New for this year was the popular 'Human Fruit Machine' and an opportunity to have your face painted.

There was apple pressing and juicing to get involved with, using new equipment purchased with a grant from The Central England Co-operative Community Fund. Everyone enjoyed apple peeling and coring, the William Tell archery game and the 'apple tree hunt.' There was a display of apples from the orchard for tasting.

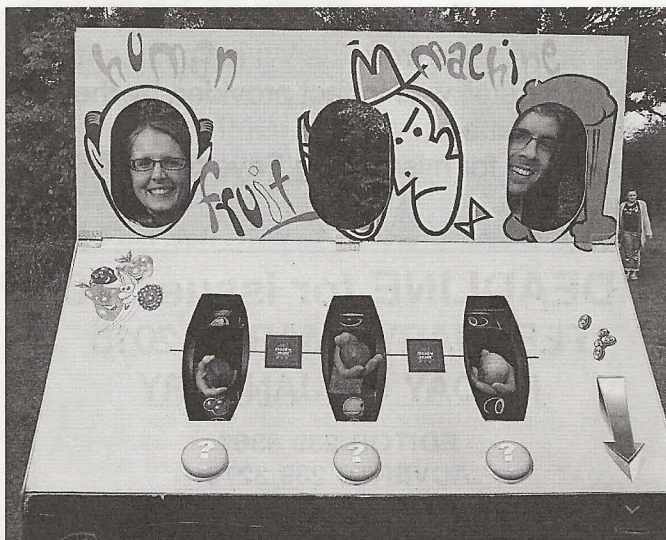
Everyone was invited to draw an apple, as part of the annual Big Draw festival.

Members of Ratby Junior Band entertained us, another first! And Neill Talbot, Senior Conservation Officer brought along a display from Leicestershire and Rutland Wildlife Trust.

Neill has helped us with our Pond dipping for many years.

The refreshment team were kept busy selling teas, coffees and home-made apple cakes.

The group have already started planning next year's event!



Simply Reiki

Reiki is an Energy Healing Treatment that works holistically on the whole body, mind and spirit, creating a deep sense of wellbeing.

For more information and to book a 45 minute treatment for £7.50:

Telephone Noreen on 0116 239 0062

**QUALIFIED REIKI HEALER
with 8 years' experience.**

JULIE'S HAIRDRESSING MAIN STREET RATBY

**CELEBRATING 30
YEARS IN THE VILLAGE**
Traditional and Modern Styling
Telephone 239 2406

**MELSWAY
DRIVING SCHOOL Est. 1991**

***BEST WISHES for CHRISTMAS
And A HAPPY NEW YEAR
From MEL to all past, present and future clients***

Telephone 238 6149 3 Barton Close, Ratby.

ARE YOU MISSING a LOVED ONE THIS CHRISTMAS?

You will find the Parish Church open between 10am and 4pm on Saturday 20th December. Feel free to come and light a candle, say a prayer or leave a note on our Christmas Prayer Tree. All welcome.

Details from Revd. Peter on 239 4606



An Apology or Two.

In issue 168 in the Ratby Show article we inadvertently stated that "folk could enjoy a cup of tea and a cake from the WI refreshment stall". The stall was in fact provided by the show committee.

Apology too for misspelling Faye Steven's name.

DEADLINE for issue 170 FEBRUARY / MARCH 2015 FRIDAY 9th JANUARY

EDITOR 239 3367

ADVERTS 239 3279

ARTICLES 239 4873

Articles may be sent to 3 Ingle Drive

Or Email: sueboud@hotmail.com

Ratby Post Office & Village Store

- ✓ Fresh & Frozen Groceries
- ✓ Household Items
- ✓ Newspapers & Magazines
- ✓ National Lottery
- ✓ Confectionery, Snacks & Drinks
- ✓ Phone Top-ups, Gas & Electric
- ✓ Greeting Cards & Stationery
- ✓ Beers, Wines & Spirits
- ✓ Dry Cleaning
- ✓ Free 24 Hour ATM
- ✓ *Many, Many Offers & Bargains!*

30 MAIN STREET, RATBY, LEICS

TEL: 0116 2393001

Shop Hours:

Mon to Sat

6:00am – 5:30pm

Sun 7:00– 12:30pm

Post Office Hours:

Mon to Fri

9:00am to 5:30pm

Sat 9:00am to 12:30pm

NEW VILLAGE STORE

Ratby Post Office has just undergone a transformation and refurbishment. If you haven't checked it out, pop in and see the lighter, brighter interior and shelves stocked with essential grocery products and special promotions.

Stationery is still available beside the Post Office Counter.



RATBY BAND at CHRISTMAS

CHRISTMAS CONCERT

Sunday 7th December, 7 – 9.30

Beaumont Leys School

Sunday 14th December, the bands will be playing carols around the village,

Check out the website for more details

www.ratbyband.wordpress.com

Need a Helping Hand?

Fed up of trying to fit everything in, and work?

Or is it all becoming a burden?

We provide a friendly and efficient service.



"Not just a cleaning company."

- Homes cleaned (All cleaning products included.)
- Properties cleaned between Lettings, or while on holiday.
- Bed Linen Changed
- Ironing (collection & delivery included)
- Fully insured.

Call Lisa on 0116 235 6065 or 07711 554609

RATBY PHARMACY

10 MAIN STREET LE6 0JG

*FREE PRESCRIPTION COLLECTION

SERVICE from all surrounding surgeries.

JUST PHONE US ON 239 3139 with your requirements. We will process your

prescription with the surgery.

All you do is COLLECT IT from us, or we can deliver to your home if needed.

You can e mail us with requirements;

ratbychemist@aah-n3.co.uk

Ratby Neighbourhood Watch

Due to lack of support it has been decided by the remaining co-ordinators of Ratby Neighbourhood Watch that the group will close on December 31st 2014.

If anyone is interested you can always become an individual member of Neighbourhood Watch by using the following link:

www.neighbourhoodlink.co.uk

This directs you to the community messaging system for Leicester, Leicestershire and Rutland. Their aim is to keep residents informed and up to date with news on appeals, events and crime prevention advice as well as information on policing matters that affect you. To join use the big red SIGN UP button.

Members of Ratby Neighbourhood Watch

VILLAGE SHOW

Ratby's Annual Show August 8th 2015

If you, like a good many folk, are not looking forward to the winter, with its cold days and dark nights; take heart! Use this precious time to take stock of your garden. Look through your seed catalogues and decide on the plants you would like to grow, and which to enter in the annual show. The usual classes will be featured again, including the popular floral and cookery sections, along with handicrafts and young people's classes – in fact, something for everyone.

The 'Show Girls' welcome you to Ratby Sports Club on August 8th to join in the fun – and fun it is! Have a go - you have nothing to lose!



HIS and HERS

**For ALL ASPECTS of
LADIES AND GENTS
HAIR DRESSING**

Specialists in Permanent Waving

**156 STATION ROAD, RATBY
239 4429**



A Happy New Year to all



Pabari's Ratby News. (Est. 25 years)

5 Station Road, Ratby, Leicester. LE6 0JQ.

Tel: 0116 239 3287.



We Deliver Daily, Evening & Sunday Newspapers.

A wide choice of Magazines, Greeting Cards & Stationery,



Sweets, Confectionary, Tobacco, Soft Drinks & Milk.



Top Up Your Mobile Phone, Electric & Gas.

A Vast Selection of Beers, Wines & Spirits



Play The National Lottery Here

Now!



Opening Times:-



Mon-Fri :- 5.00am to 1.00pm, then 2.30pm till 10.00pm

Sat:- 5.00am through until 10.00pm

Sun:- 7.00am to 2.00pm, then 7.00pm till 9.00pm



Get Fit And Healthy
with Charlotte Tomlinson, MSc

ZUMBA DANCE FITNESS!
GROBY VILLAGE HALL

Monday nights 5:30-6:30pm
£4 per class or 10 classes for £30

**Have fun, burn calories and
dance your way to fitness!**



FITNESS YOGA
**GROBY COMMUNITY
COLLEGE**

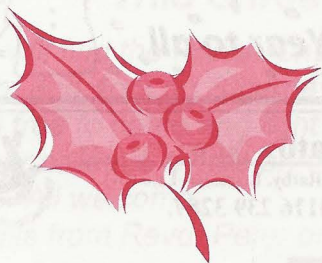
Tuesday nights 6:45-8:00pm
£5 per class

**Get fitter, stronger, leaner,
more supple and finally relaxed!**

www.fit4dance.com

Email: charlotte.tomlinson@hotmail.com

Tel: 07939 588092



FIELDING MEADOW

Off Fielding Lane, Ratby. LE6 0AS

Discover our energy saving homes at Fielding Meadow, in the Village of Ratby.

- Traditionally built & Highly Insulated – Quality finish
- Spacious & bright Living Areas
- Available Now

New Release – Off Groby Road, Ratby

3 Bed semi-detached Houses from £193,950

3 Bed Detached Houses from £243,950

4 Bed Detached Houses from £319,950

'Help to Buy' on selected Plots

Visit our distinctive showhome open 12 – 4pm on Friday, Saturday and Sunday or call 0116 239 0600 to view.

Kirby Grange Farm

Taverner Drive, Ratby, Leicester. LE6 0HQ



www.cawrey.co.uk
email: enquiry@cawrey.co.uk

