

WOT!

About Ratby

PUBLISHED BY RATBY SCOUT GROUP



1906 to 2015

In October 1906 Geary's Bakery opened in Station Road. The family's involvement in baking was first recorded in the village in 1891.

Geary's moved to larger premises in 2010 to enable increased production, and the site remained empty until this year when the Central England Co-op Store opened for business at the end of June. The original bakery building has been retained as you can see from the photographs.

The tradition of bread making continues with an in-store bakery!



Thank you to Ratby Local History Group and Gloria Geary for the 1906 photograph. A detailed history of

Geary's bakery can be found in Volume 2 of the History Group's Books on the History of Ratby. And you can read a fascinating account of Dennis Green's working days in Ratby Co-op in Volume 4. There has been a Co-operative store here since the beginning of the 20th Century.

All four volumes of The History of Ratby, published by the History Group are available to purchase at Ratby Post Office, and we thoroughly recommend them.

NEW CAP MONEY COURSE

Are you interested in sorting your finances?

This is a **FREE** course to help you manage your money better and learn to **BUDGET**, **SAVE** and **SPEND** well.

The course consists of just 3 sessions starting:

THURSDAY 3rd SEPTEMBER

TIME: 7pm – 9pm

**WHERE: RATBY METHODIST CHURCH
STATION ROAD
RATBY LE6 0JQ**

TO BOOK YOUR PLACE:

Phone Sue Lawton 0116 2313957

www.capmoneycourse.org

email David.Lawton@methodist.org.uk

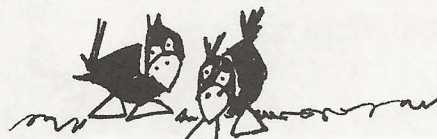
Twilight Walk for LOROS

We would like to say a huge thank you for all donations received to support the MNDevils who took part in the 10k Twilight Walk for LOROS in memory of Mick Porter of Porter's Carpets in the village. A fantastic team grand total of £1500 was raised. A great but very wet night was had by everyone-all in a good cause!

bake it!

Come along and join us for our 'bake it!' Coffee and Cake morning on Saturday 5th September 2015, 10-12 at Ratby Church rooms raising money for Motor Neurone Disease in memory of Mick Porter of Porters Carpets in the village. All welcome.

The Porter Family and friends.



Harrisons Spice

INDIAN CUISINE

0116 239 5644

BRING YOUR OWN ALCOHOL

A RANGE of SOFT DRINKS is AVAILABLE

*See page 4 for our letter and information
about our support event for Derbyshire,
Leicestershire and Rutland Air Ambulance.*



PROUD SPONSORS of RATBY TOWN CRICKET CLUB

23-27 Station Road, Ratby, Leicestershire LE6 0JQ

www.harrisonsspace.co.uk

ART IN RATBY

£380.37 was raised for Alzheimer Research UK as visitors enjoyed the Ratby Art Exhibition in the Village Hall, with over 60 original paintings by local artists.

Pictures exhibited were in pastel, crayon, pencil, ink, watercolour, oil and acrylics.

Visitors stopped to watch Julia Kent and Peter Griffin painting in different media, explaining how they were working to enhance their paintings.

12 pictures were sold, from the smallest watercolour to the largest canvas in mixed media by Natasha Solanki which was bought to brighten up the Village Hall by the Committee, showing their support for a young, local artist in her first exhibition.

Visitors were encouraged to vote for their favourite painting and Peter Griffin's "Autumn in New Walk" was declared the winner.

My sincere thanks to the WI for providing refreshments, and all those who contributed in so many ways by selling plants, buying pictures and tombola tickets, putting up the exhibition, signage and of course all those who came to enjoy the pictures.

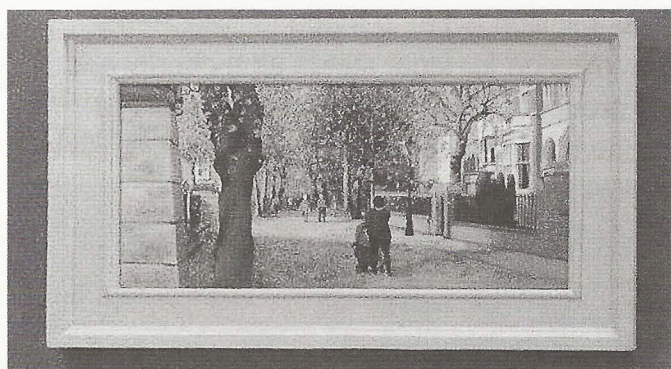
Help needed in 2016 - If you would like an exhibition next year and feel that you could offer your help in any way, please contact me now on 0116 2390475 or e-mail chris@talbot97.plus.com



Julia & Chris Enjoying the Exhibition



Peter Griffin Painting in Oils



The Favourite, "Autumn in New Walk" by Peter Griffin

Need a Helping Hand?

Fed up of trying to fit everything in, and work?
Or is it all becoming a burden?
We provide a friendly and efficient service.



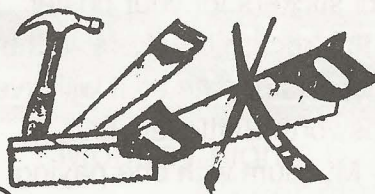
"Not just a cleaning company."

Call Lisa on 0116 235 6065 or 07711 554609

- Homes cleaned (All cleaning products included.)
- Properties cleaned between Lettings, or while on holiday.
- Bed Linen Changed
- Ironing (collection & delivery included)
- Fully insured.

A. GOODWIN

CARPENTRY, JOINERY
PROPERTY REPAIRS
0116 2387316
MOBILE: 0777 9872211



RATBY PHARMACY

10 MAIN STREET LE6 0JG

***FREE PRESCRIPTION COLLECTION SERVICE** from all surrounding surgeries.
JUST PHONE US ON 239 3139 with your requirements. We will process your prescription with the surgery.

All you do is **COLLECT IT** from us, or we can deliver to your home if needed.

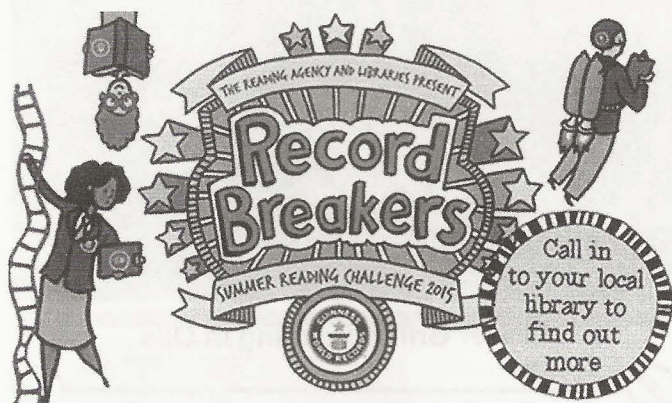
You can e mail us with requirements;
ratbychemist@aah-n3.co.uk

Letter to the Editor

Dear Editor,

I wish to say a big THANK YOU to all our customers who supported the charity dinner earlier this year at Harrison Spice. The evening raised £400 in aid of the Derbyshire, Leicestershire & Rutland Air Ambulance service. We were really struck by the kindness and generosity of all those attending who made such efforts to ensure the event was a success in assisting this great charity. Apologies to all those who missed out due to the high demand for tables – we shall endeavour to organise another charity evening soon so please keep an eye out.

Tuhel Miah



Children aged 4 to 12 years can join this annual reading challenge. Just pop into the library and register to receive your free poster. Then all you need to do is to read at least 3 books before 5th September to collect stickers for your poster. Join in the hunt for the 'record breakers' in the library too! Keep your poster safe as it will give you free entry to Bosworth Battlefield and Snibston Discovery Museum with one paying adult.

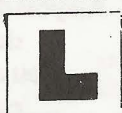
MELSWAY **DRIVING SCHOOL** *Est. 1991*

Mel Shipley D.S.A. A.D.I. M.I.A.M.

Pass Plus Registered

***Complete Beginners* Part trained*
Motorway Tuition and Refresher lessons.**

**Telephone 238 6149
3 Barton Close, Ratby.**



RATBY LIBRARY NEWS

Plans are progressing well for the imminent establishment of a volunteer- led Library for the village. Leicestershire County Council expects the hand over to take place in January 2016.

Meetings for volunteers were held in the library on the 1st and 4th of June when an update on current progress was given, with details of opening times and how the volunteer rota will operate. At the moment there are 40 volunteers. More helpers are welcome, so if you would like to join this team please contact Ken Hunnybun on 07720 542 295, or email him at ajmskk@aol.com You could choose to help with the library service, the café, home visits or offer services occasionally. Your ideas will be welcomed. There will be free training provided by the County Council Library Services.

Numbers of users at Ratby Library have declined in recent years, so the management committee are hoping that their plans for additional activities and the all-important café will increase footfall. Longer opening hours should also encourage increased use.

A submission is being made to the Charity Commission for legal status as a charity and the group will then be known as 'Crow Pie Foundation,' reflecting the historical nickname for Ratby as 'Crow Pie Village.'

There are plans to improve the sustainability of the building through installation of LED lighting and solar panels. Internet access and WIFI will be improved, and CCTV installed for security of users.

And plans are afoot to involve students from Groby Community College as part of their enrichment through community involvement.



1st Ratby Explorers

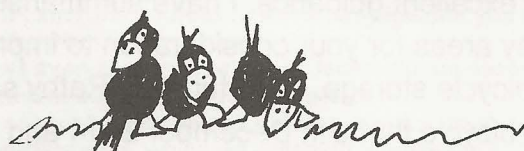
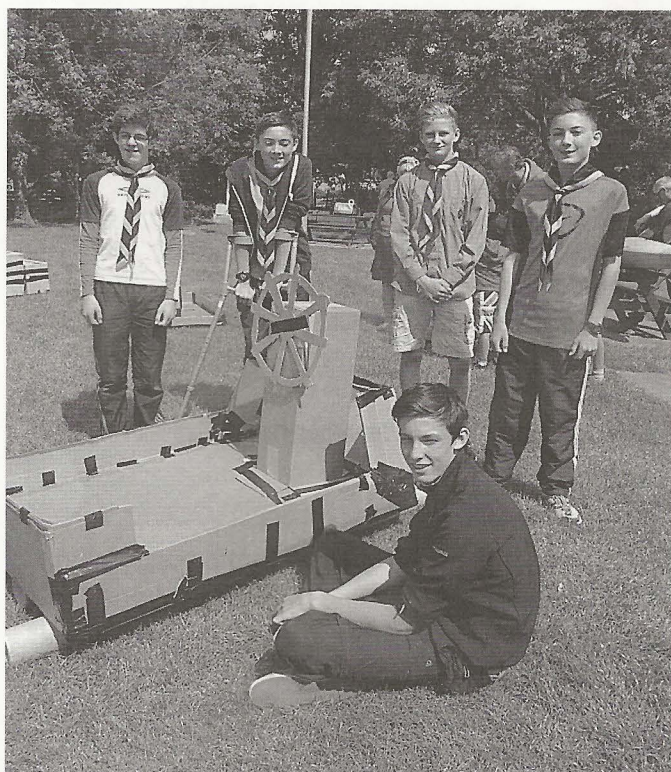
Explorer Scouts returned to Ratby in January this year. Our first ½ year has been quite eventful. Highlights being:

- Winning South West District 5-a-side bi-annual football competition
- Camping – survival skills (axe, cooking, fire lighting)
- Zip wire
- Fund raising for the Group
- Competing in the County cardboard box boat regatta
- Laser tag
- Fencing
- Hiking
- Challenge nights
- Soap carving
- Paracord projects
- Team games / sports
- Training as young Leaders

Our Unit is made up of 12 members from Ratby and surrounding villages and we have become a great team. We look forward to the rest of 2015 as we work towards our Chief Scouts Platinum awards.

Tracey Payne

1st Ratby Explorer Leader



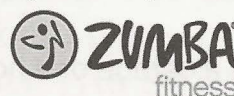
Get Fit And Healthy

with Charlotte Tomlinson, MSc

ZUMBA DANCE FITNESS! GROBY VILLAGE HALL

Monday nights 5:30-6:30pm
£4 per class or 10 classes for £30

Have fun, burn calories and
dance your way to fitness!



INSANITY! GROBY VILLAGE HALL

Monday nights 6.30-7.30pm
£5 per class

An extreme fitness programme for
those who want to be challenged!

FITNESS YOGA GROBY COMMUNITY COLLEGE

Tuesday night 6:45-8.00pm
£5 per class

Get fitter, stronger, leaner,
more supple and finally relaxed!

www.fit4dance.com

Email: charlotte.tomlinson@hotmail.com

Tel: 07939 588092

Secure bicycle solutions.

Those of us who enjoy the use of our bicycles no matter if it's a thrash up the Burroughs or a commute to work, when it comes to security it is evident from my recent experience living in the village that your garden shed may not be as secure as you think. Fortunately there are some good resources for us to read in order to improve our bicycle security wherever we store it or temporally leave it whilst having a swift but refreshing drink at one of our wonderful pubs.

The initiative Secured by Design and a national sustainability assessment tool provides us with some excellent guidance. I have summarised the key areas for your consideration to improve your bicycle storage. Unfortunately Ratby saw many bicycle thefts in December 2014 and onwards. It only takes a few minutes for entry into a poorly protected shed.

Storage If you use a shed the frame should be strong, 38mmx50mm, the external boarding robust 10mmx125mm and roof at least 11mm board. Please don't have a window and ensure the base of the shed is fixed to the floor. A concrete slab is best but a timber floor can suffice. I would recommend as a minimum, lining the internal of the shed door with 11mm sheeting and if you can the entire inside of your shed.

If your storage is a garage or a home just think about the locks and an anchor point. The use of hasp and staples at the top and bottom of your



JULIE'S
HAIRDRESSING
MAIN STREET RATBY

Traditional and Modern Styling
Telephone 239 2406

shed door with padlocks is recommended. I would also personally recommend a rim lock or two added to the door for that secondary security. Please remember to bolt your hinges, locks and the hasp and staple through the structure of the frame, door and any lining. For any remaining external screws use theft proof screws on the outside.

Bicycle anchor – Use a ground or wall anchor or even a racking system or a Shed Shackle which again must be "Sold Secure" silver or higher. This must be installed in full accordance with the manufacturer's recommendations. A paving slab shed base for example is unlikely to suffice.

Now you have a strong shed, let's look at the security of the bicycle.

Secured by Design encourage that the bicycle's crossbar and both wheels are locked with a "D" lock to your bicycle anchor. The "D" lock again must be silver or higher and taken with you wherever you go

Additional ideas. Think about placing a wireless burglar alarm inside your shed, this could be a simple personal safety device rigged up or an extension of your home system. If entry is gained into your shed an alarm sound could well further encourage them to leave having battled through all of the above! If you are out and about consider what you are locking your bicycle against. It needs to be stronger than the "D" lock otherwise that's the weakest link!

The scheme "Sold Secure" provides levels of performance for padlock locks, anchors and, many more things. Please use the rating of Silver or higher for all your padlocks, anchor points, chains etc. I would highly recommend Gold based on our recent experience.

Simon Jones – Consultant



PRESCRIPTION SERVICES

Some residents have received forms concerning repeat prescriptions, asking them to sign and indicate which surgery they use. Ratby Pharmacy wishes to make clear that these forms are not connected to their services. It seems that the forms are from an internet based company.



A BIG THANK YOU to all those who helped, in any way, in this year's Christian Aid Week (10th -16th May 2015).

Through all that effort: tramping streets, knocking on doors and ringing bells, meeting and greeting your neighbours in Ratby, you have managed to achieve another record year!!

We, Chapel, Church and our other friends, have managed to cover more of the village, with more collectors than last year.

As I write the current total for Ratby stands at **£2153.36, which is the largest sum ever raised** by Ratby in Christian Aid Week and **over 6% up on last year's total!** This magnificent sum will be further increased when a few remaining donations are banked & Gift Aid is added on. The collected cash is now on its way to help the needy and the poor throughout the world where it will be used to alleviate poverty and suffering regardless of race or creed.

You can find out more about the work of Christian Aid and how it uses the funds you have helped to collect at: <http://www.christianaid.org.uk/whatwedo/>

Escape from France

Jack Haywood will be giving a talk at the Ratby WI meeting on August 12th at 7.30 pm in the Village Hall, Main Street.

He will be describing his experiences as a ten year old child during his family's escape from the German occupation of France.

This is an open meeting and all are welcome. There is a charge of £2.50 for non-member visitors which includes refreshments.

LETTERS and ARTICLES

We welcome letters and articles, but reserve the right to edit them or deny publication.

Your name and address must be supplied, but you may ask for them to be withheld.

Views expressed in articles and letters do not necessarily represent the views of the Publishers.

We cannot be held responsible for information in advertisements, which we accept in good faith.



OAKLANDS RIDING SCHOOL



**WE CATER FOR EVERYONE FROM
THE NOVICE TO EXPERIENCED RIDER**

All weather riding area
Ring Julie on 238 7570



Pabari's Ratby News. (Est. 25 years)

5 Station Road, Ratby. Leicester. LE6 0JQ.

Tel: 0116 239 3287.



We Deliver Daily, Evening & Sunday Newspapers.

A wide choice of Magazines, Greeting Cards & Stationary,



Sweets, Confectionary, Tobacco, Soft Drinks & Milk.



Top Up Your Mobile Phone, Electric & Gas.

A Vast Selection of Beers, Wines & Spirits



Play The National Lottery Here

Now !



Opening Times:-

Mon-Fri :- 5.00am to 1.00pm, then 2.30pm till 10.00pm
Sat:- 5.00am through until 10.00pm



DEADLINE for issue 174 October / November 2015 FRIDAY 11th SEPTEMBER

EDITOR 239 3367

ADVERTS 239 3279

ARTICLES 239 4873

Articles may be sent to 3 Ingle Drive

Or Email: sueboud@hotmail.com



**FEEL
GOOD
FEET**

HOME VISITS FOR:

**JACQUI
COOPER**

DipCFHP MPSPact

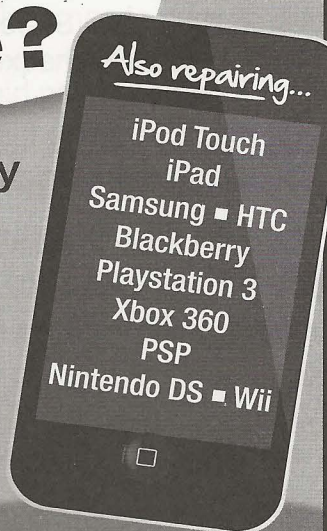
07804029231

- NAIL CUTTING
- VERRUCAE
- CORNS
- CALLUS
- CRACKED HEELS
- INGROWN NAILS
- FUNGAL NAILS
- DIABETES CARE



BROKEN iPhone?

- Fast, Friendly Service
- All Repairs Guaranteed
- Price Match Promise



FOR AN
INSTANT QUOTE CALL
0116 286 6447

Unit 33, King Street Buildings, George Street Entrance,
Enderby, Leicester LE19 4NT
www.iparepair.co.uk

Ratby Post Office & Village Store

- ✓ Fresh & Frozen Groceries
- ✓ Household Items
- ✓ Newspapers & Magazines
- ✓ National Lottery
- ✓ Confectionery, Snacks & Drinks
- ✓ Phone Top-ups, Gas & Electric
- ✓ Greeting Cards & Stationery
- ✓ Beers, Wines & Spirits
- ✓ Dry Cleaning
- ✓ Free 24 Hour ATM
- ✓ *Many, Many Offers & Bargains!*

30 MAIN STREET, RATBY, LEICS
TEL: 0116 2393001

Shop Hours:
Mon to Sat
6:00am – 5:30pm
Sun 7:00– 12:30pm

Post Office Hours:
Mon to Fri
9:00am to 5:30pm
Sat 9:00am to 12:30pm

Porter's Discount Carpets

121/3 STATION ROAD, RATBY
Telephone 239 3238 or Mobile 07872 488271

SHOP AT HOME SERVICE



Duralay

STIKATAK
The No.1 in Flooring Accessories

ABINGDON
FLOORING

CLOUD
9
RANGE OF
UNDERLAYS
PURE LUXURY
UNDER THE CARPET

TREDAIRE



STAINFREE



Gripperrods

envirolay
Carpet underlay that treads lightly on the planet



heart'n'soul
felt & rubber combination underlay

THE DESIGNER
STAIRROD
COMPANY

QUICK STEP

flotex
engineered for life



STERLING ROYALE

NOW INCLUDING L.B.P. Tiling SPECIALISTS IN CERAMIC AND PORCELAIN TILING