

APRIL/MAY 2016

ISSUE 177

# WOT!

## About Ratby

PUBLISHED BY RATBY SCOUT GROUP



# COMMUNITY, COFFEE, CAKES and BOOKS!

Our local Library became a Community Library on Monday February 8<sup>th</sup>. A team of dedicated volunteers have worked hard together to overcome the inevitable initial glitches to provide a welcoming community space for the whole village.

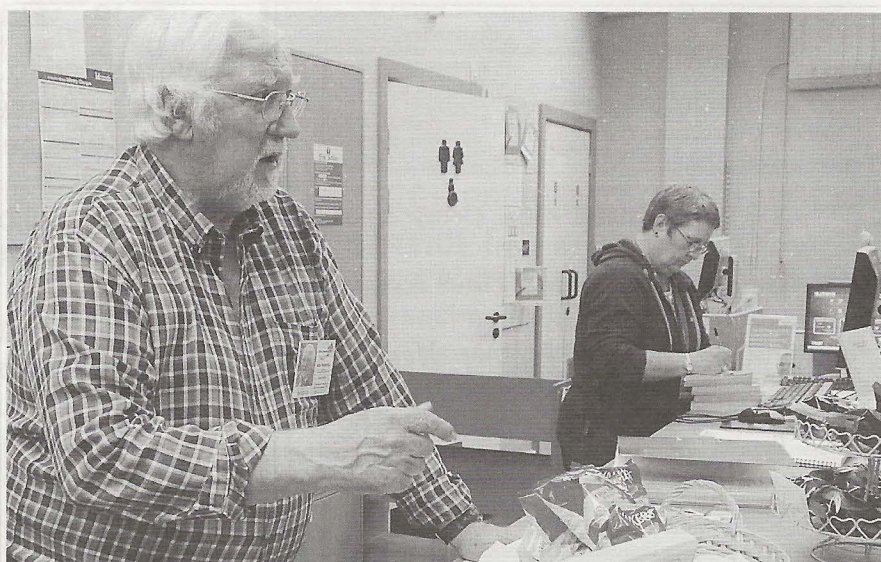


You can still borrow books, get photocopies done or surf the internet as usual, but now you can also pop in for welcome refreshments, and perhaps a sit down before you tackle the hills after a shopping trip.

Current opening hours are from 11am to 4pm, Monday to Saturday, but from April 11<sup>th</sup> it will open at 9am on weekdays. A great place for a welcome drink and a chat after dropping children off at School or Playgroup!

The library and 'Crow Pie café' are planning a special 'Cakes and Coffee' event on Easter Saturday 26<sup>th</sup> March. Other events booked in include a meeting on the evening of 4<sup>th</sup> April as part of the selection process for our new Vicar.

More on Page 2





## RATBY LIBRARY

The Trustees would like to welcome more volunteers to join the team. Tasks might involve helping in Crow Pie-Café, or Library administration which involves issuing books etc. You can, like the existing team work in both areas. The team are also open to suggestions about other activities or skills you can offer. Existing volunteers have said;

'It's very exciting being part of a new venture.'

'You're offering a service that otherwise wouldn't be here.'

'You meet new people. We're working with people we didn't know from all areas of the village.'

'It's about making a contribution to community life.'

Contact Ken Hunnybun on **07720 542 295**, or by email;

[ajmskh@aol.com](mailto:ajmskh@aol.com)

Or just pop into the library for a chat and pick up a Volunteering Form.

The library's new website has now been launched;

[www.ratbycommunitylibrary.org.uk](http://www.ratbycommunitylibrary.org.uk)

If you haven't visited we recommend that you drop in soon!



### Pabari's Ratby News. (Est. 25 years)

5 Station Road, Ratby. Leicester. LE6 0JQ.

Tel: 0116 239 3287.



Sweets, Confectionery,  
Tobacco, Soft Drinks & Milk.



Top Up Your Mobile Phone, Electric & Gas.

**A Vast Selection of Beers, Wines & Spirits**



**Play The National Lottery Here**

**Now!**

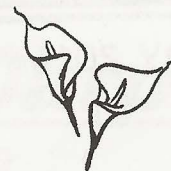


**Opening Times:-**

Mon-Fri :- 5.00am to 1.00pm, then 2.30pm till 10.00pm

Sat:- 5.00am through until 10.00pm

Sun:- 7.00am to 2.00pm, then 7.00pm till 9.00pm



## JACK HAYWOOD

A muffled peal of bells summoned villagers, friends and relatives, including family from Belgium, to Ratby Parish Church on Thursday March 3<sup>rd</sup> to celebrate the life of Jack Haywood. Many people will have heard Jack's fascinating story of how, as a ten year old boy, he escaped with his family from the German occupation in France. Like many refugees he went on to achieve great success in his professional working life following his degree in Chemistry. Jack and Joyce arrived in Ratby in 1968 and it was not long before Jack became involved in the village community. He took part in the biennial Village Quiz which ran for many years. He was a founding member of the Village Society, eventually becoming its Chairman. And he was an active member of Ratby Community Orchard, where his technical knowledge, enthusiasm and ideas will be greatly missed.

He will be remembered by many as the person who read out the names of the fallen on behalf of the Royal British Legion at the annual Service of Remembrance in the church and at the village war memorial. The December 2015 issue of Wot carried an article he had written about the Service of Remembrance.

Jack was totally committed to getting involved in village life and his absence will be greatly felt. Our condolences to Joyce and family.



## ELIZABETH KILMISTER

We are sad to report that Mrs Elizabeth Kilmister passed away earlier this year. Her funeral was held at Ratby Church on 2<sup>nd</sup> February.

Elizabeth will be remembered by many villagers for her stalwart work in keeping the village clean. She did an excellent job litter picking throughout Ratby.

She and husband John were mentioned in issue 24 of Wot! about Ratby when they had completed a fifty mile plus bike ride around churches in Leicestershire, and raised £50 for the Historic Churches Preservation Trust. Our condolences to her husband John.



## Groby Sings

Have you heard of *Groby Sings*, our local community choir? The choir rehearses in Groby Club and performs at Groby Community College but has several members from Ratby as well as Groby, Glenfield, Markfield, Thornton, Kirby Muxloe and Desford plus a few from even further afield. The choir currently numbers well over 200, including 30 children, and is fully inclusive. That means no auditions and no requirement to be a super singer. We have all kinds of people who are just happy making music and there are enough of us to hide a few fluffed notes here and there! However, although we are amateurs, we do make a great sound, as anyone who has been to a concert will confirm.

Since the choir began in 2013, we have performed 2 concerts twice a year and have included popular songs from such diverse shows as *Les Miserables* and *My Fair Lady* to *Disney's Frozen* plus favourite songs such as *California Dreamin'*, *Uptown Girl* and Gary Barlow's *Sing*. We are now very excited to be rehearsing songs from *The Beatles* and *Abba* for our next concert in June. Everyone knows at least one song by these well-known artists so it's easy to sing along whether in the choir or the audience!

If you would like to join, you will be made very welcome. In particular, we would love to swell the ranks in our men's and children's sections so don't be shy! Rehearsals are at Groby Club on Mondays for adults - 1.15-3.00pm or 8.00-9.30pm, and Fridays for young people (from age 7) - 3.40-4.40pm. We always include a 'cake break' to rest our voices.

If you'd rather not sing, we do need audiences at our concerts so come along on 25<sup>th</sup> or 26<sup>th</sup> June and support us. You won't be disappointed. After our last concert, members said '*It makes Monday a day to look forward to.*' and '*Our whole family are in the choir and we all love it.*' If you live in Ratby and are already a choir member or supporter, why not write your own article for WOT! and give your experiences of *Groby Sings*?



## RATBY PRE-SCHOOL HAVE A CRACKING EASTER FAYRE!

Staff, Committee and Helpers all worked together on Saturday 19th March to provide a brilliant afternoon of Easter fun. The Pre-school was full to the brim with children all enjoying fantastic face painting, Easter themed crafts, cakes, raffle, stalls and also a traditional Easter Bonnet competition.

The children all had a great time with a whopping £349.53 being raised!

The Pre-school provides high quality early years education for the village and is a registered charity so fundraising for materials, equipment and training really is crucial.

A great big thank you to all who helped and supported the Fayre, we hope you had as good a time as we did!

**Susie Ackland**



## OAKLANDS RIDING SCHOOL



**WE CATER FOR EVERYONE FROM  
THE NOVICE TO EXPERIENCED RIDER**

**All weather riding area**

**Ring Julie on 238 7570**

## RATBY PHARMACY

**10 MAIN STREET LE6 0JG**

**\*FREE PRESCRIPTION COLLECTION**

**SERVICE from all surrounding surgeries.**

**JUST PHONE US ON 239 3139 with your requirements. We will process your**

**prescription with the surgery.**

**All you do is COLLECT IT from us, or we can deliver to your home if needed.**

**You can e mail us with requirements;**

**ratbychemist@aah-n3.co.uk**



## CAMPUS ORCHESTRA JOINT CONCERT

On February 10<sup>th</sup> the Brookvale-Groby Campus Orchestra took part in a concert with Ratby Co-operative Band. This was a huge opportunity for us to play with an experienced band and to showcase the pieces we had been working on.

It was inspirational to hear Ratby Band play their own pieces, which have given me inspiration for my AS Level Composition. The best part of the night was playing fun, well known pieces with Ratby Band.

I would like to thank Miss White for organising such a brilliant concert, and also a big thank you to Mike and The Band for a fun and inspiring evening.

**Emily Woodall,**  
Year 12 student Groby Community College.



**A support worker is required for bright 15 year old, to support her attendance at clubs/swimming and other adhoc activities for a small number of hours per month.**

**Excellent rates of pay.**

**Applicant must have access to own car.**

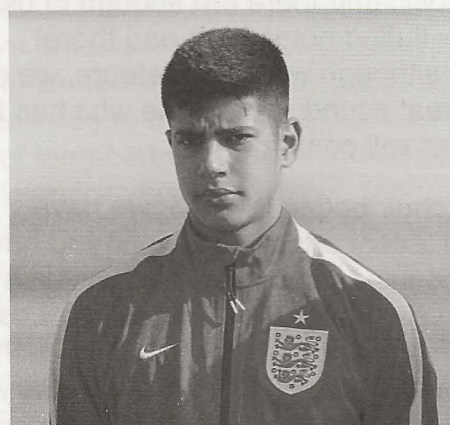
**Please email;**

**belmontallens@gmail.com for further information.**

## ENGLAND SELECTION for RATBY'S SIM THANDI

Groby Community College year 11 student Sim Thandi, has just returned from Portugal where he represented the U17 Football team in an International Tournament.

Sim is an Academy footballer with Leicester City FC. He made three appearances in the tournament and gained insight into the life of a professional footballer which he is working towards. Congratulations to Sim on this fantastic achievement.



## RATBY COMMUNITY ORCHARD OPEN EVENT

**Saturday 21<sup>st</sup> May 11.30am to 1.30pm  
In Ratby Community Library**

Come and find out what the Community Orchard is all about and how you can get involved. There'll be a slide show: *The Orchard 1998 to the present* and displays.

Refreshments available from the Crow Pie Café.

**Special event offer! Free first year's membership to new members.**

For more details ring 239 4873 or e mail us at [ratbycommunityorchard@gmail.com](mailto:ratbycommunityorchard@gmail.com)

## Need a Helping Hand?

Fed up of trying to fit everything in, and work?  
*Or is it all becoming a burden?*  
We provide a friendly and efficient service.



"Not just a cleaning company."

Call Lisa on 0116 235 6065 or 07711 554609

- Homes cleaned  
(All cleaning products included.)
- Properties cleaned between Lettings, or while on holiday.
- Bed Linen Changed
- Ironing (collection & delivery included)
- Fully insured.

## JULIE'S HAIRDRESSING MAIN STREET RATBY

**Traditional and Modern Styling**  
**Telephone 239 2406**



### CORNFLOWER BLUE

Amy Clarke opened her floristry business at 34 Main Street on December 5<sup>th</sup> last year. She says she has been delighted by the welcome and positive response she has received. She chose Ratby as a location because she knew it from childhood, and her feeling that the village has a real sense of community has absolutely been confirmed.

The premises are one of three which are all currently newly established, and Amy felt this was an exciting venture to be involved in. Amy had always wanted to run her own shop since childhood. She enjoyed gardening with her grandparents, and chose to work in a florist for her work experience. She then embarked on three years training before joining a floristry business for fourteen years, where she rose to become the head florist.

Wedding flowers are her particular speciality, and she loves spending time on consultations with the brides to be, helping them to choose flowers that will perfectly complement their dress and colour theme.

The shop has a lovely atmosphere with the scent of flowers greeting you as you walk in.

There are gifts and cards too. Amy chooses cards from independent makers, and is expanding this aspect of the business.

Amy has also run several workshops on flower arranging. You may have seen proud participants heading home with their vintage tea cup creations! More workshops are planned for the summer and autumn. The theme in the workshops is about how to make the most of flowers, wanting people to realise that they don't have to be expensive.

We're expecting to see some wonderful entries in the flower arranging classes at this year's Ratby Show!



### MELSWAY DRIVING SCHOOL *Est. 1991*

Mel Shipley D.S.A. A.D.I. M.I.A.M.

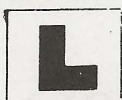
Pass Plus Registered

**\*Complete Beginners\* Part trained\***

Motorway Tuition and Refresher lessons.

Telephone 238 6149

3 Barton Close, Ratby.



At the moment Amy is experimenting with different opening hours to see which work best, but she is open six days a week. You will always find something different each day, as Amy has an excellent supplier where she can select small bunches of flowers at competitive prices. The favourites, such as roses and lilies will always be in stock.

Look out for posters in her window for forthcoming events, or follow her on Facebook for up to date information.

[www.facebook.com/cornflowerblueflowers](http://www.facebook.com/cornflowerblueflowers)

### RATBY COMMUNITY CINEMA Programme for April

Films start at 6.30 pm in Ratby Church

Food and snacks from 6pm.

FREE for all the Family

**15<sup>th</sup> April – Spectre (12) to be confirmed**

**29<sup>th</sup> April - Animal Kingdom: Let's go  
Ape!**

### ***Get Fit And Healthy*** *with Charlotte Tomlinson, MSc*

### FITNESS YOGA GROBY COMMUNITY COLLEGE

Tuesday nights 6:45-8:00pm  
£5 per class

Get fitter, stronger, leaner,  
more supple and finally relaxed!

[www.fit4dance.com](http://www.fit4dance.com)

Email: [charlotte.tomlinson@hotmail.com](mailto:charlotte.tomlinson@hotmail.com)

**Tel: 07939 588092**



## OPEN MIC @ THE PLOUGH

The Open Mic nights are continuing on the first Monday of each month, at 8.30 pm in The Plough, Burroughs Road.

The next session will be on **April 4<sup>th</sup> 2016**.

We'd love to welcome some new performers, as well as the talented people who've entertained us on previous nights. Why not come down and join us? The landlord, John is offering two free pints or equivalent to performers. What's not to like?

And if you don't sing or play come along anyway and enjoy a great evening.

Contact Steve on 07821 256 496 for more info, or John at The Plough.

**Pictured are 'Rooj' from Nuneaton who played at our February open mic.**



## DIARY DATES

### Ratby's Annual Show

2pm Saturday 13<sup>th</sup> August

Ratby Sports Club, Desford Lane, Ratby.

### Yard Sales

Bank Holiday Monday 2<sup>nd</sup> May

10am until 3pm

Register at <http://ratbychurch.org.uk/>

## RATBY METHODIST CHAPEL EVENTS

**Saturday 23<sup>rd</sup> April 10.00 until 1.00 pm**

### **St George's Day Fair**

'Hunt the Dragon' Quiz

Refreshments (bacon butties a speciality!)

Raffle

Variety of stalls...something for everyone.



**Wednesday 27th April 3.00 pm**

### **Beetle Drive**

Tea & Cakes

Bring & Buy

Admission £3.00

Proceeds for 'C.A.P.' (Christians Against Poverty)

**Saturday 30<sup>th</sup> April**

### **Family Games Afternoon**

Tea included

Fun, food, games and a raffle

All ages welcome.

Adults £3.00, Children £1.50 Family (2 adults/2 children £6.00)

Tickets 0116 287 4042

Proceeds for Ratby Girls' Brigade

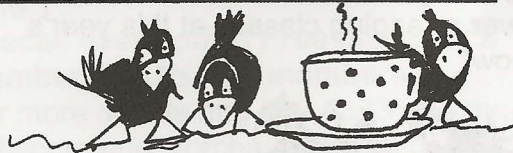
**Saturday 14<sup>th</sup> May**

### **Chantry Choir Concert**

Music for all tastes

Raising funds for Lawrence House, Hinckley, a home for disadvantaged and homeless teenagers.

Coffee Mornings on 9<sup>th</sup> and 23<sup>rd</sup> April



# WRIGHT TYRES

## Fully mobile tyre fitting service

New tyres - Part worn - Puncture repairs - Batteries - Brake pads

**07851 223007**

[wrighttyres247@gmail.com](mailto:wrighttyres247@gmail.com)

*We come to you!*



## LETTERS to the EDITOR

### THE BRADSHAW OF BERRY'S LANE

In researching my family history in Ratby, I would be grateful for any information regarding the Bradshaw family who occupied No. 39 Berry's Lane in the late 1950s and early 1960s. Head of house was Arthur with son, Arthur, daughter Kath and grandson Dennis. The mother may have had an initial D.

**Alvar Johnson**

01162877870 or e mail  
[anjimj1@outlook.com](mailto:anjimj1@outlook.com)

**Dear Editor,**

**Re: Building in Ratby**

As the alleged housing need grows, and with government easing up on planning restrictions, it is inevitable that new builds in any area will gain approval. It has happened in Glenfield and LFE, and may happen in Ratby, BUT, in its position on the edge of the National Forest, Ratby is special and does have more assets to lose.

Slower development, favoured by some, depends on the proximity of the site. Twelve to 18 months, or 8 years? Better to ask the opinion of a person living close to such a site.

**Jane Rayne.**

Address supplied.

### 90's COFFEE MORNING

This takes place annually later in the year, but we need your help in finding Ratby people that have reached the age of 90 or over since our last get-together. Also, if you know anyone who you think may have been missed off our guest list in previous years...we want to hear from you. Please phone me with details on **2395350**.

Thank you.

**DEADLINE for issue 178**  
**JUNE / JULY 2016**  
**FRIDAY 13th MAY**

EDITOR 239 3367  
ADVERTS 239 3279

ARTICLES 239 4873  
Articles may be sent to 3 Ingle Drive  
Or Email: [sueboud@hotmail.com](mailto:sueboud@hotmail.com)

## LOZ'S JEWELLERY CREATIONS

Over the previous years, there has been a rising trend for personalised jewellery. My Aunt Loz has noticed this, especially the demand for charm bracelets. She makes her own Necklaces, Bracelets (including charm bracelets of which the charms are subject to availability) and Earrings. This started as a hobby for her but now she wants to branch out into selling them at reasonable prices. She wants to add more beauty to a sometimes jaded but already naturally beautiful world. She can make them to the wearer's wishes and preferences in colour as well as the wearer's wrist size.

She will be doing a stall at my house (28 Markfield Road) on the 2<sup>nd</sup> May for the upcoming Yard Sale. So do come on by and glance at the products and who knows you may be pleasantly surprised at what you might find.

Any other queries or requests either contact me via E-mail: [jess27@excite.com](mailto:jess27@excite.com) or landline no: (0116) 2395605 or Mobile no: 07931381164 or you can contact her yourself via her E-mail: [lozcrouch@hotmail.co.uk](mailto:lozcrouch@hotmail.co.uk).

**Jess Peach**



**Quilteez**

*Patchwork and quilting supplies*

**fabric \* notions \* online**

Gorgeous fabrics at reasonable prices.

Classes available for all levels in patchwork and quilting, dressmaking and textile art.

For more information visit our website, call us on 0116 239 0982 or pop into the shop.

32 Main Street, Ratby, Leicestershire, LE6 0LL

[www.quilteez.co.uk](http://www.quilteez.co.uk)



# Porter's Discount Carpets

121/3 STATION ROAD, RATBY  
Telephone 239 3238 or Mobile 07872 488271

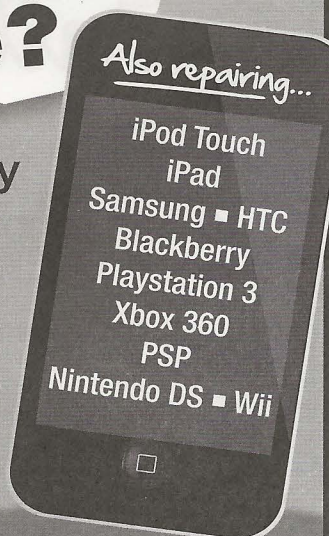
## SHOP AT HOME SERVICE



**NOW INCLUDING L.B.P. Tiling SPECIALISTS IN CERAMIC AND PORCELAIN TILING**

## BROKEN iPhone?

- Fast, Friendly Service
- All Repairs Guaranteed
- Price Match Promise



FOR AN  
INSTANT QUOTE CALL  
**0116 286 6447**

Unit 33, King Street Buildings, George Street Entrance,  
Enderby, Leicester LE19 4NT  
[www.ipaqrepair.co.uk](http://www.ipaqrepair.co.uk)

## Ratby Post Office & Village Store



*Come and see our new look store – You'll be amazed at the choice and prices!*

**30 MAIN STREET - TEL: 0116 2393001**

Shop Hours:  
Mon to Sat  
6:00am – 5:30pm

Post Office Hours:  
Mon to Fri  
9:00am to 5:30pm  
Sat 9:00am to 12:30pm