

OCTOBER/NOVEMBER 2006

ISSUE 120



About Ratby  
PUBLISHED BY RATBY SCOUT GROUP

## ON PARADE CENTENARY CROW PIE CARNIVAL

This year's CROW PIE CARNIVAL on Saturday August 12th celebrated the Ratby Co-operative Band's Centenary. As we go to press the Band are performing their Centenary Concert at De Montfort Hall. There will surely be a report in the next issue of Wot!

Pictured here is the parade heading down Main Street past the Primary School, en route for the Ferndale Park Carnival site. The floats resounded to the music of Ratby Co-op Youth Band and St Simon and St Jude Brigade Band. Desford Lane Pedlars added their own spectacular touch with vintage cycles and riders in historic costume.

More photographs on page 2.



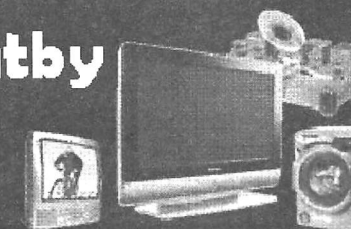
20 Years of Wot! About Ratby magazine!



PLUG INTO SERVICE & PRICE

RTV of Ratby

0116 2394544



Authorised Dealers of: BOSCH Electrolux Hotpoint JVC LG TOSHIBA



SAMSUNG

42" Inch Q7 Series Plasma  
HD Ready  
In Built Digital  
Smooth Motion Driver  
Gloss Black Frame

£1399.99

DVD/VCR Combi Recorder  
DivX, MP3, TimeSlip

£199.99

TOSHIBA

DVD/VCR & HDD Combi  
Recorder

160Gb HDD, DivX, MP3, Time-  
Slip, Jpeg, Twin Scart

£259.99!



BEKO

15" Inch LCD TV  
4:3  
NICAM Stereo  
500:1 Contrast Ratio  
PC Input, Scart, AV Input

£149.99!



BEKO

1000 Spin Washing Machine  
A Energy Rated  
5Kg Load

£179.99!

RTV Of Ratby

23-27 Station Road, Ratby, Leicester, LE6 0JQ

Telephone 0116 2394544 Fax 0116 2387576

## CROW PIE CARNIVAL PARADE

We'd love to hear your memories and print photos. of past Carnival celebrations.



## RATBY LOCAL HISTORY GROUP

Our meeting season is upon us once again, with the first meeting on September 29<sup>th</sup>. Helen Trubshaw was scheduled to present a talk about the Land Army during the Second World War.

Our second meeting, on December 1<sup>st</sup> at 7.30 pm in the Village Hall features a talk on 'Little Known Places in Leicestershire' by Brian Trubshaw.

The Group's second volume in the series of books on The History of Ratby is now on sale, available from the Post Office or by telephoning 239 4168. Featured in the book are;

- Geary's Bakeries 1906 to 2006,
- The toils of a Ratby Schoolmaster
- Annie Astill 1863-1922 sub postmistress.
- Dennis Greens walk around Ratby in the 30s and 40s.
- Ratby's Enclosure Act of 1770.

## RATBY PARISH COUNCIL

Sometimes the things we mere mortals plan actually happen. In our last report we said "By the time you read this we should be test driving our new Clerk!" and as we write that is just what we are doing. The new Parish Clerk is **Mrs. Linda Fogg**.

We also told you that we "had a young volunteer come forward to fill one of the vacancies" on the council. **Mick Earl** has now joined us and he and Chris Boothby are working on the next stage of the Ferndale Park project. Mick has also agreed to join the planning committee which looks at and comments on individual planning applications submitted to HBBC.

### APPLE TROUBLE

Thank you to the public spirited Ratby resident who discouraged some local young children from continuing to throw orchard apples around. It is a community orchard, but the apples are there for picking and eating when they are ripe. **Orchard Group**.

Welcome aboard Mick and Linda, we hope you enjoy and succeed in your new responsibilities.

We also have applications from other residents to fill the remaining vacancy on Council, so by the time you read this we may be up to strength. And we would like to assure you that every member of the present Parish Council lives in the village.

Too much good news? Well, here's some more! The new Multi Games Arena at Ferndale Park is due to be installed on Monday, 18<sup>th</sup> September and will take approximately 10 days to complete. We have also decided to use the play equipment which had been taken out and the Basket Ball posts have been re-sited so that if the Multi Games Arena area is in use you will still have somewhere to play. Continuing on the Ferndale theme, the decision on a grant towards the supply of new play equipment for the next phase is imminent.

The Environment Agency has identified parts of Ratby which are liable to flooding and they are looking for volunteers to be trained as flood wardens. Is there anyone out there who would be interested?

Let our new Clerk know if you are interested in volunteering to play King Canute!

### CONTACT THE COUNCIL

Telephone us on 239 0167

E mail us; [ratbypcouncil@btconnect.com](mailto:ratbypcouncil@btconnect.com)

[www.ratbyparishcouncil.org.uk](http://www.ratbyparishcouncil.org.uk)

**BEST WISHES**  
for  
**EID ul FITR**

## Porter's Discount Carpets

121/3 STATION ROAD, RATBY

TELEPHONE 239 3238 or 239 5202. MOBILE 07860 551142

QUALITY AT THE  
RIGHT PRICE



SHOP AT HOME  
SERVICE



Laminated Flooring

FREE FITTING  
ON ALL CARPETS  
EXCEPT REMNANTS



GEORGIAN  
CARPETS



ask for it by name!

"Everything From A Blown Fuse To A  
Complete Rewire"

PAULS QUALITY ELECTRICS

Your Local, Fully Qualified City & Guilds  
**ELECTRICIAN**



Upgrading Old Fuse Boxes - Rewires - Alarm Systems  
New Sockets & Lighting - All Domestic & Commercial Electrics

Call Paul Rumble on: (0116) 2872338  
MOBILE: 0798 0911 869 Website: [www.pqelectrics.com](http://www.pqelectrics.com)

GAS  
APPLIANCE  
SERVICES

- Appliance Servicing and Installation
- Breakdown and Repair Services
- Plumbing and Heating Installation
- Kitchen & Bathroom Design and Installation
- Quality Guaranteed by Experienced Engineers



YOUR DOMESTIC GAS  
BOILER SERVICED

6 SAXONS RISE, RATBY, LEICS. LE6 0NF  
Tel: 0116 2393662





## A. GOODWIN

CARPENTRY, JOINERY &  
PROPERTY REPAIRS

0116 2387316 OR  
MOBILE 0777 987 2211

FITTED KITCHENS, BEDROOMS & BATHROOMS

PLUMBING

TIMBER & UPVC WINDOWS / DOORS &  
PORCHES

FENCING & GATES

DECORATING, FLOOR & WALL TILING

PLASTERING & COVING

FASCIAS / SOFFITS & GUTTERING

SOLID & LAMINATE FLOORING

RADIATOR COVERS

PLUS ALL PROPERTY MAINTENANCE & REPAIRS

NO JOB TOO SMALL

## RATBY VILLAGE SOCIETY ANTI-LITTER CAMPAIGN

Congratulations and a big thank you to everyone who produces and delivers WOT! Twenty years is a considerable achievement.

We had our first Bric-a -Brac stall at the Crow Pie Carnival this year, and enjoyed it so much we'd like to make it an annual event. It enabled our campaign to be seen by more Ratby residents and helped us to spread the anti-litter message more clearly too. Also it gave people the chance to see many of the posters school children had designed for us, and receive their Anti-Litter sticker from Chris. Please save your unwanted items for us, and look out for our stall next time.

Jane Rayne



## TRANSPORT OF DISMAY

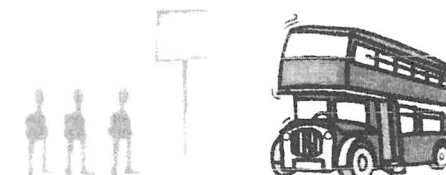
'Use public transport' plead the adverts.  
Use train or bus-or on yer bike!  
Leave car at home, that air polluting  
road congesting car, and do without.  
Smooth, speedy trains are much the better-  
outpacing speed restricted bus,  
but do not stop at every corner.  
Come, risk a bumpy lurch to town!  
Sit tight unless it's standing only-  
rolling rock will beat funfair!  
All human kind is here this morning  
and range of age so widely spread.  
Fun is free with old age passes,  
free papers littering the floor.  
Streaked hair, face painted, bare midriff dolly  
'Ah'm on the bus,' to ear-tight phone,  
long, loud, private confidences  
till 'Ta-ra me duck arl see yer soon.'  
School-kids who never learn good manners  
yawp and yelp as in a zoo;  
unshaven, unkempt, tattooed yobbo's  
foul mouth would make a navvy blush.  
Gran loves 'Corrie' on the telly,  
companion vows 'Big Brother's best;  
Asian man gulps from a bottle;  
fat boy chomps strange flavoured crisps.  
Shopaholic loads M and S bags,  
pays for one seat, takes up two.  
Student nurse reads Harry Potter-  
can't she have a bit of peace?  
Young mother with a double buggy  
and squawking brats who won't be tamed.....

Aren't you glad that journey's over?  
But brace yourself, there's more to come!  
Wish I had a pair of wings  
.....I'd up and fly.

Hoz

## ALL CHANGE ON THE BUSES

The 254 Coalville to Leicester bus has now become **X1 Limited Stop**, running several minutes later than before and going directly to the bus station, no longer dropping off on High Street. The 27 is every 15 minutes now. What do you think of the recent timetable changes to our bus services? Let us know your views.



## ASTILL AND JORDAN

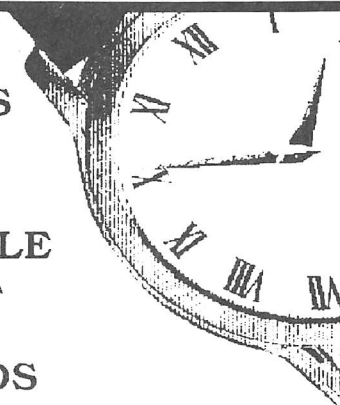
All this talk about buses brings the one-time Ratby Bus Company, Astill and Jordan to mind. Newcomers to the village will find it hard to believe that the bus garage once existed where the Wimpey estate at Brook Drive now thrives. Do you have memories of the trips to town via Glenfield on the blue and cream buses, with a friendly conductor? Maybe you went on some of the excursions, a trip to Cromer, or the Vale of Evesham perhaps? We'd love to hear about your recollections. Does anyone have a photo of the garage?

## WATCH BATTERIES & STRAPS

FITTED WHILE  
YOU WAIT

ALL BRANDS  
**SYKES JEWELLERS**

8 Bradgate Road, Anstey  
Tel: 0116 236 2510  
[www.sykesjewellers.co.uk](http://www.sykesjewellers.co.uk)



*The Plough Inn, 6 Burroughs Road, Ratby, Leicester. 0116 392103*

# Plough Inn

**NOW UNDER NEW MANAGEMENT!**

**TRADITIONAL, HOME COOKED FOOD SERVED;**  
**TUESDAY-SATURDAY 12.00-2.00 p.m. and 6.00-9.00 p.m.**  
**SUNDAY 12.00-3.00 p.m.**

**CURRY NIGHT! EVERY TUESDAY 6.00-9.00 p.m.**  
**COME AND TRY ONE OF OUR CHEF'S FAMOUS CURRIES.**

**A LARGE SELECTION OF WINES, BEERS AND SPIRITS,**  
**INCLUDING UP TO SIX TRADITIONAL ALES!**  
**FUNCTION ROOM AVAILABLE FOR HIRE.**

TELEPHONE 0116 239 2103

## PABARI'S RATBY NEWS

5 STATION ROAD RATBY  
0116 239 3287

For the Largest Selection in Ratby of  
**BEERS WINES and Spirits**

**A VAST CHOICE OF CONFECTIONERY &  
SOFT DRINKS**  
**A LARGE VARIETY OF GREETING CARDS,  
WRAPPING PAPER and STATIONERY**

**NEWSPAPERS and MAGAZINES  
DELIVERED TO YOUR DOOR DAILY**

**We are Agents for  
SKETCHLEY DRY CLEANING**

**Video rental and Photocopying**  
**OPEN Monday-Friday 6.15-1pm. 2.30-10pm**  
**Saturday 6.15-10pm**  
**Sunday 7.30-2pm. 7pm-9pm**

## Groby Secondary Schools Record Best Ever Results Language College Successes Buck The National Trend.

This year's test and examination results for youngsters aged 14, 16 and 18 in Groby and its surrounding villages were the best ever in the history of its two secondary schools who have specialist Language College status: Brookvale High School and Groby Community College.

The 100 A level students at Groby College achieved a 100% pass rate with 67% of all grades awarded at levels A-C. 63% of the college's 16 year olds attained 5 or more A\*-C passes at GCSE and virtually all the 327 students achieved at least one GCSE pass or equivalent.

## JULIE'S HAIRDRESSING MAIN STREET RATBY

Traditional and Modern Styling

Telephone 239 2406



## JULIA NEWTON Holistic Therapist

Aromatherapy, Reflexology,  
Reiki, Indian Head Massage,  
Hot Stone Therapy, Manicures,  
Detox Massage, Pedicures,  
Swedish Massage, Facials,  
HOPI Ear Candles, - Prices from £15

call:- **07712 766011**

- \* GIFT VOUCHERS AVAILABLE
- \* SALON BASED IN RATBY
- \* MOBILE SERVICE AVAILABLE

**10% DISCOUNT WITH THIS ADVERT**

At Brookvale High school 92% of 14 year olds reached or exceeded the Government's benchmark of level 5 in English, 93% in Maths and 91% in Science. In Maths 79% achieved level 6 or above, with a record number of students going up 3 National Curriculum levels while at Brookvale.

Students at the Language College did exceptionally well in Languages at a time when nationally there has been a marked decline in the number of students studying a language beyond the age of 14.

The Community College already has International Schools status and Brookvale is working towards this award. This means that the mission statement of the two schools, "To open minds and doors through Language Learning" is represented across all areas of the curriculum with a huge focus on helping youngsters to gain a real understanding of people from other cultures, races and beliefs. In this way Groby secondary schools hope to develop young people who are truly global citizens and who can take their place in the world of the future where values such as tolerance and respect for others play a part in addressing some of the many problems facing societies today.

Many ex-students of Groby schools are already working in exciting careers using their language skills. It should be remembered that language graduates are among the most successful at obtaining employment after leaving University waiting on average half the time to find permanent opportunities than that taken by graduates in many other more popular degree courses.

## RATBY CHEMIST LTD.

58 MAIN STREET LE6 0LL

**\*FREE PRESCRIPTION COLLECTION  
SERVICE! \***

From surrounding surgeries.

**JUST PHONE US ON 239 3139** with your requirements. We will process your prescription with the surgery.

All you do is **COLLECT IT** from us, or we can deliver to your home if needed.

You can e mail us with requirements;  
[Ratbychemistltd@aol.com](mailto:Ratbychemistltd@aol.com)

## NEWS FROM our LOCAL SCHOOLS

The Language College is currently in the process of submitting its application to continue with language specialism for 4 more years. If successful there should be many more students in the future experiencing the success and fulfilment that comes with learning languages.

But whatever the outcome the two schools will continue to work in partnership to offer the very highest standard of education to youngsters of Groby and its surroundings.

Caroline Wilkins, Principal, Groby Community College  
Katie Rush, Head teacher, Brookvale High School

## OAKLANDS RIDING SCHOOL



**WE CATER FOR EVERYONE FROM  
THE NOVICE TO EXPERIENCED RIDER**

All weather riding area  
Ring Julie on 238 7570

## MADE YOUR WILL YET?

**"I can come to your home at a time  
to suit you and give professional,  
friendly advice on 'Wills' Trusts and  
Estate Management."**

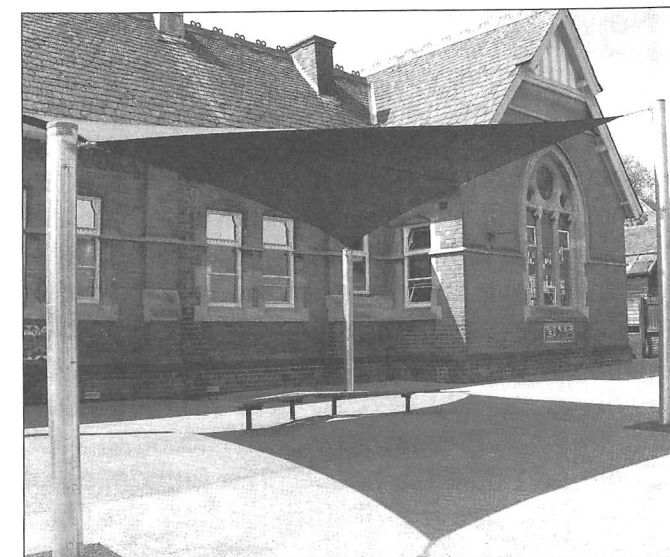
**Our Standard Will £24.95 + vat**

Also

Power of Attorney: Property Trusts:  
Will Storage: Inheritance Tax Wills  
Funeral Plans: Children's Trusts.

**Telephone Mrs Chris Thomas  
For an appointment or brochure  
01509 502264**

In Home Legal Services  
Member of the Society of Will Writers



## RATBY SCHOOL CHILDREN ARE COOL!

Summer may now seem like a distant memory, but in June this year the children of Ratby Primary School received a welcome addition to their playground. Funds raised by the Parent Staff Association were used to purchase a playground shade sail from Keep it Kool Shade Sails Ltd.

The supporting poles were concreted in to place and, for a while, curious passers by must have wondered what this strange structure was going to be. Shortly afterwards the sail was fitted and it looks fantastic - providing a much-needed area for the children to cool off and protect them from the sun during playtime.

If you would like to get involved with the P.S.A. and their other fundraising projects, please contact the school who can put you in touch with Committee members. They're a friendly bunch and you would be made very welcome

## HIS and HERS

**LADIES AND GENTS  
HAIR DRESSING**

**OAPs REDUCED RATES**  
**Appointments not always necessary.**

**156 STATION ROAD, RATBY  
239 4429**



## News from St Philip and St James

As a new school term begins, at St PJ's we start a new set of All Age Worship services on the first Sunday of each month. We've started by thinking about choices and the different situations we come across, whatever our age, where we have to make a choice. We looked at the story of two men who wanted to build a house. One took the easy route, wanting everything quickly and so built his house on sand which was easy to work. The other took his time and built his house on a foundation of rock which was hard work. When the bad weather came along, cheap and cheerful took its toll whereas hard work paid off. During October we'll be celebrating Harvest at 10am on Sunday 1<sup>st</sup> and on Sunday 29<sup>th</sup> at 6.30pm our young and (not so) older people will be giving a performance in song of the story of David and Goliath. There's a seat here for you to use – we'd be glad to see you.



### ELVERSTONE FAMILY

Mr John Perkins, currently living in Australia, is researching his family tree. He would love to hear from anyone regarding the Elverstone family of Ratby and surrounding villages. Contact him via e mail;

[mrjohnperkins@yahoo.com](mailto:mrjohnperkins@yahoo.com)

## RATBY BADMINTON CLUB

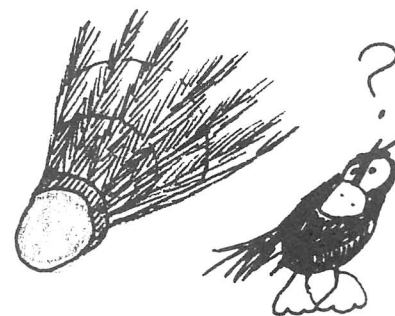
Following the construction of the new Hall at Ratby Primary School in 1974, the then Headmaster, Mr Ballard suggested that the new facility could be used by the staff in the evenings, and Badminton was one of the ideas for its use.

Several of the teachers, including Mrs Jan Kirkham and Mrs Brenda Derbyshire, together with spouses and some parents formed a Club, and contributed towards the hire charges and costs of shuttles etc. Badminton was not played competitively as the hall was too short for a full sized court. In due course the Club moved to larger two-court facilities at Bosworth College, Desford, in 1991.

Brenda Derbyshire became the treasurer, with husband Roy as secretary, positions held for 15 years, until their recent retirement. The Club has a friendly atmosphere, plays social badminton, but does not play in any league competitions. It meets on Monday evenings from September to Easter, except on odd occasions when the hall is required for College purposes.

The Club has vacancies for new members. Experience is not essential, and beginners are welcome. It is envisaged that if the Club gets a good response a Junior Section will be started with coaching for those interested. If there are young people interested in joining existing members will help with transport if required. For information ring;

**Mr Ian Vernon, Secretary 239 5387**  
**Mrs Lorraine Turner, Treasurer 238 7479.**



Mobile Phone Top-Up  
Cards now available

**VODAPHONE**  
**CELLNET**  
**T MOBILE**  
**ORANGE**

Going Abroad? Don't  
forget we can offer  
the following

**Travel Insurance**  
**Foreign Currency**  
**E111 Medical Forms**

Remember you can cash  
cheques and make deposits  
for these Banks at your  
local Post Office

**LLOYDS TSB** **CO-OP**  
**A & L** **GIROBANK**

**RATBY**  
**POST**  
**OFFICE**  
**Main Street**  
**Ratby**  
**239 3001**

And we also sell stamps!!!

## RATBY COMMUNITY ORCHARD

This year we'll have celebrated Apple Day with a harvest event on Sunday October 1<sup>st</sup>. Hope you found time to join us!

**Apple Day** is October 21<sup>st</sup>. Why not enjoy a treat at home, and bake this apple cake? You might still find some orchard apples to cook!

### RATBY ORCHARD APPLE CAKE

#### Ingredients

8 cooking apples  
250 g. Butter  
250 g. Caster sugar  
4 eggs  
200 ml. cream  
200 g. SR Flour

#### Method

Pre-heat oven to 400F/210C/GAS 6  
Grease a deep 28cm cake tin

Peel the apples and cut into quarters.  
Remove core and pips  
Cut each quarter lengthways into 3 or 4 slices

Melt 40 g of butter in a pan, and sauté apples on both sides.  
When soft sprinkle with 50g sugar, then brown without caramelising.  
Arrange in bottom of cake tin.

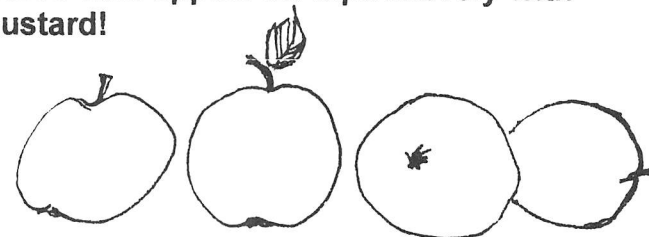
Gently melt remaining butter

Beat eggs and sugar with electric whisk, until a mousse like consistency.  
Beat as you add melted butter and cream.

Mix flour and salt together, add to mixture and continue to beat.  
When well mixed pour over apples in tin.

Bake in centre of oven for 40 to 45 minutes.

Leave to cool for 10 minutes.  
Then turn out onto a wire rack.  
Leave to cool completely.  
**Serve with apples on top.....lovely with custard!**



## THE METHODIST CHURCH CHAPEL ANNIVERSARY, SUNDAY OCTOBER 29<sup>th</sup>

SERVICES will be held at 10 a.m. and 6 p.m.  
With guest preacher Rev. Trevor Grewcock.

Our anniversary celebrates the opening of the present chapel in October 1911. The building, together with its granite boundary wall was built on a plot previously used as an allotment. The building was erected between April and October by Ratby Builder B Shipman and Sons, forebears of the present-day Shipman family, at a cost of £1,398-13s-6d. We are delighted, (and a little bit proud) to be welcoming back to his roots an old Ratby lad to be our guest Preacher.

Born in a little cottage in Church Lane, Trevor gained his first insight into Methodism within our own Sunday School.

Many older villagers will remember Trev. In various ways. Some as a village school kid, others as a butcher's lad, working for Mr Freeman, the village butcher of the time and others as a euphonium player in the old 'Ratby Silver Prize Band.'

Eventually Trevor was persuaded towards the Ministry, was ordained, and has since served the Methodist Church in various parts of the country. He has recently retired.

We offer a special invitation to anyone who remembers Trevor to renew that acquaintance at one of our services on the 29<sup>th</sup>. We know that he and we would be very pleased to see you.

God Bless.



## A.H.COLEY

**Plumbing and Heating Repairs**  
**New Installations, Bathrooms, Showers**

\*\*\*\*\*

**For a full range of Services contact;**  
**4 Saxons Rise**  
**RATBY LE6 0NF**  
**Telephone 239 4277**

# Letters to the Editor

Dear Wot,  
I hope you remember me - you kindly published an article in April WOT about my trek in the foothills of the Himalayas on behalf of Help the Aged.

Help the Aged do really good work in India as I saw for myself. One project is the Mobile Medical Unit Delhi The van is manned by a doctor and pharmacist, once a week in the middle of one of the poorest areas.

Any and all the older people can go to be examined and issued with drugs for the infections and diseases that are prevalent in that area.

In addition our Help the Aged trek group visited the project 'Adopt a Grandma'. We, as ambassadors of Help the Aged, were greeted by the old ladies and one old man who gave us each a rose and more than you than we could manage.

Please pass on a thank you to the regulars of The Railway Pub especially the landlord - they collected £18.65.

I won't be doing any more treks but I can still do the odd bit of collecting. I thought it might be a good idea to have a coffee and cake morning somewhere!

Julie, who was our trek organiser, has sent me details of the next two treks, which I attach. If you have space to print this information please do. The more trekkers the better.

Thanks for your help  
Regards, Janet

## Trek the Inca Trail

Date: 24 May -2 June 2007

Discover the Lost City of the Incas, Machu Picchu This astounding trek will immerse you in an ancient civilisation and allow you to soak up the vibrant Peruvian culture.

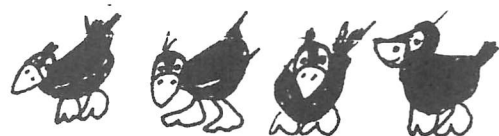
## Trek India

Discover the magical Himalayas

Date: 13-23 October 2007

This exhilarating trek will take you through one of the world's most breathtaking mountain ranges.

Both are a challenge of a lifetime and to enrol your registration fee would be £195 for each trek. You will then need to raise a minimum of £2,800 in sponsorship prior to the Inca Trail trek, and / or £2,600 in sponsorship prior to the India Trek. If you are interested please contact the Events Team (Julie Roberts) on 020 7239 1922 or email them on [events@helptheaged.org.uk](mailto:events@helptheaged.org.uk) for further information.



Golden Charter  
Funeral Plans

## Anstey & District Funeral Services

**J.G.Wright**

A privately owned firm  
offering 24-hour personal and dignified service.  
Day & Night  
Private Chapels of Rest

**Traditional Black Daimler Hearse & Cars**  
Funerals Completely Furnished

*Funeral arrangements can be made  
in the comfort of your own home if preferred.*

**Telephone: 0116 234 0548**

Talbot House, 9a Leicester Road, Anstey, Leicester, LE7 7AT  
[www.ansteyfunerals.com](http://www.ansteyfunerals.com)

## SATURDAYS PROVE TO BE BIG HIT!

As the cold, dark nights draw in, you might not fancy popping to your local library to take that book back or borrow another one from the exciting new range that's recently been delivered across the County. That shouldn't stop you taking advantage of the latest best sellers as fifty libraries in the county are now open ALL day Saturday and it's proving to be very popular.

Many libraries across Leicestershire have been open on Saturday for some time. Since April this year, the majority of the remaining libraries in Leicestershire have extended or altered their hours of opening so that they are open all day Saturday too. The latest research has shown that Saturday's are showing the largest increase in book issues than other days of the week.

merrident  
dental



Time to refresh your smile

- Award Winning state of the art practice
- Accepting NEW patients (no waiting list)
- Tooth Whitening and Cosmetic Dentistry
- Same day emergency service
- Anxious patients warmly welcomed
- Please phone for practice brochure



434a Narborough Road  
Leicester LE3 2FS

Lina Patel BDS (Birm)  
Shrikesh Kotecha BDS (London)

Tel: 0116 289 1317

**DEADLINE for issue 121  
DECEMBER/JANUARY  
FRIDAY 10th NOVEMBER**

EDITOR 239 3367

ADVERTS 239 3279

ARTICLES 239 4873

Articles may be sent to 3 Ingle Drive  
Or Email: [sueboud@hotmail.com](mailto:sueboud@hotmail.com)

## Bradgate Twinning Association Dixieland/New Orleans Jazz Evening.

Bradgate Twinning Association is holding a Dixieland/New Orleans Jazz Evening on November 11th at Newtown Linford Village Hall starting at 7.30pm. The music will be provided by the very popular local group of talented musicians The Springfield Jazz Ensemble. They will be bringing a quartet on this evening and will play a variety of music in the Dixieland/New Orleans style from a wide repertoire.

The ticket price is £8 which includes supper and there will also be a bar. We are expecting to attract a large audience for this very popular band and it should be a very good evening.

To obtain tickets telephone 0116 287 3119 or any member of the Association.

DIWALI GREETINGS  
October 21<sup>st</sup>

## THE SERVICE GARAGE

**MAIN STREET, RATBY  
M.O.T TESTS**

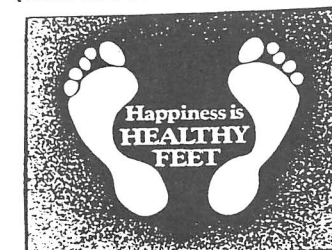
**CARS (PETROL and DIESEL)**

**M.O.T. HOURS 9.00-4.15 Monday-Friday**

**Closed for lunch 1-2**

**TELEPHONE 239 4966**

**Peter Comley, MSSCh. MBChA.  
REGISTERED WITH THE HPC  
(Health Professions Council)**



**Visiting Chiropodist**

**A Convenient & Professional Home  
Treatment Service - with over 10 years experience  
Tel: 01530 244887**

**LEARN TO DRIVE**



**WITH AN APPROVED INSTRUCTOR**

**ARCHER'S SCHOOL**  
OF MOTORING



PATIENT, FRIENDLY AND FULLY QUALIFIED INSTRUCTOR

REASONABLE HOURLY RATES

REFRESHER COURSES AVAILABLE

PASS PLUS AND MOTORWAY LESSONS

**0116 2386743 / 07719 302147**