



# WOT!

## About Ratby

PUBLISHED BY RATBY SCOUT GROUP

# A SENSE OF WONDER

## POND DIPPING AT RATBY COMMUNITY ORCHARD

The annual pond dipping event down at the Orchard site is proving more and more popular. With help from Orchard Group member Neil Pilcher, and Neil from The British Trust for Conservation Volunteers we enjoyed discovering the species resident in the pond.

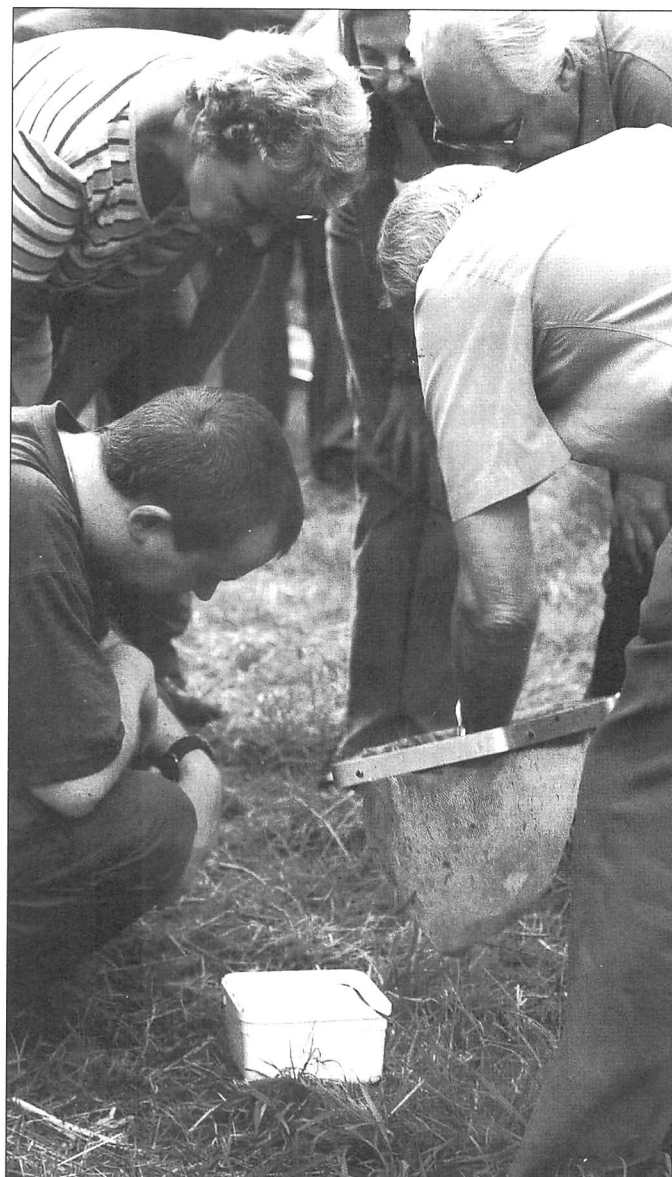
These included Dragonfly nymphs, newts, water beetles, and pond skaters. The pond margins were brightened by the flowers of purple loosestrife.

At dusk we spotted pipistrelle bats, and with the aid of a bat detector were able to hear them too.

We have heard that some villagers have commented that the pond 'is a disgrace!' Perhaps those people are expecting an ornamental pond with water lilies and goldfish. However, such a pond would not be appropriate on this site. Our village pond is a natural pond, created to encourage wildlife, and so by its very nature it will look wild and untidy.

## Christian Aid Tops £1,700!

A very big thank you to all our collectors and donors for Christian Aid Week in May this year. The total collected through Churches Together in Ratby was an excellent £1722.44. This includes £81.44 which was the offering at the united service in May. It also included a £100 cheque from one individual, an indication of how generous some people can be. It will be used to relieve the suffering of thousands of people in the developing world of all faiths and none. Thank you again.



Examining the latest find.

# Get a clearer Vision

## LC-32GA5E

32" visible screen diagonal in Widescreen format  
1,366 (horizontal) x 768 (vertical) pixel xRGB  
Advanced SuperView & Black TFT (low reflection)  
Quick Shoot Technology and Improved signal processing for high speed moving images  
High brightness of 450 cd/m<sup>2</sup>, contrast ratio of 800:1  
Optical picture control for adjustment to the prevailing light conditions (OPC)  
NICAM/A2 stereo decoder  
with Virtual Dolby Surround

**£1299.99**

Save £300  
on this set  
with The WOT!

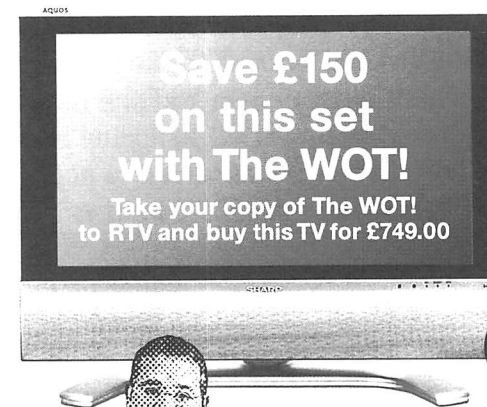
Take your copy of The WOT!  
to RTV and buy this TV for £999.00



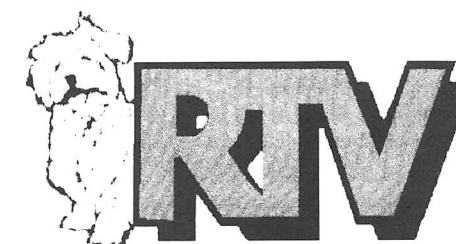
## LC-26P50E

26" visible screen diagonal in Widescreen format  
1,366 (horizontal) x 768 (vertical) pixel xRGB  
Advanced SuperView & Black TFT (low reflection)  
Quick Shoot Technology and Improved signal processing for high speed moving images  
High brightness of 450 cd/m<sup>2</sup>, contrast ratio of 800:1  
Optical picture control for adjustment to the prevailing light conditions (OPC)  
NICAM/A2 stereo decoder  
with Virtual Dolby Surround

**£999.99**



We are an independent retailer – with friendly local service and personal attention – but we're also members of EURONICS – Europe's biggest independent electrical buying group, which means we can offer you the very best deals on the highest quality brand names!



23-27 Station Road, Ratby,  
Leicestershire LE6 0JQ  
Tel: 0116 2394544



- Low Prices
- Top Brands
- Special Offers
- Local Delivery
- After Sales Service
- Helpful Staff
- Expert Advice

**EURONICS CENTRES**  
*Making your money go further!*

## News from St PJ's

After the summer holidays, it always feels to me like time to start a whole new programme of events in the life of the church (I know it shouldn't – but it does!). All sorts of groups are starting their activities again and would be pleased to see new faces. As events are being planned up to (dare I say it?) Christmas, there is something for everyone of all ages. The first event to get us started will be our celebration of Harvest on the first Sunday in October. Following the 10am service we will be distributing harvest gifts to people across the village. We would be pleased to welcome you to your church at this special time, and if you would like to help with the distribution of gifts that would be great. Don't let the evenings drawing in mean you have to be shut in at home. With different activities on offer you may find yourself enjoying something new and making new friends.

## PARISH CHURCH DIARY

**Sat/Sun 26th/27th November 10.00-4.00pm**  
**Christmas Tree Festival** in the Parish Church

**Sat 26th 7.30pm CONCERT** by National Church Lads and Girls Brigade Choir in the Parish Church

**Wednesday 14th December 6.30pm**  
**Carols Round The Tree** with the Ratby Band and Primary School choir, next to the Village Hall.

## THE METHODIST CHURCH

During September we celebrated with our 'Harvest Festival' e gave thanks for our food in plenty, brought to mind those less fortunate, and wondered at the amazing variety of food available to us these days.

Not so long ago our village was surrounded by farms. We were able to watch as the crops of corn, oats and barley were harvested and brought in from the fields, to be stored in our numerous village stack yards. In those days, being closer to the scene, we would probably have sung our thanks that 'all is safely gathered in' with a little more appreciation than today.

Never the less, though our church was no longer decorated with sheaves of local corn, it was good to see the wide variety of harvest represented, with Mango, Curry pods, Sweet potato etc. and we thanked God for the variety provided.

### Coming Events:

**Saturday October 29<sup>th</sup>.**

**Church Anniversary.** Social Evening, Faith Supper and Light entertainment.

**Sunday October 30<sup>th</sup>**

**Church Anniversary Services.** 10 am, 6 pm  
Guest Preacher Revd. John Bowes

**Saturday December 3<sup>rd</sup>**  
**Christmas Bazaar**



## WE NEED YOU!

We have some spare capacity for advertising. If you would like to be a part of this popular, well read magazine please get in touch. See our **DEADLINE BOX** ON page 11

## SUMMER BRASS AND VOICES

An audience of over 500 enjoyed what is now a biennial concert organised by Ratby Co-operative Band's Jubilee Festival Committee.

"The idea for this event came from my wonderful wife Violet, herself a chorister," says the Band's President, Phil Plant. This year's concert was dedicated to the memory of Violet, and we heard a special recording by a 14 year old Violet singing 'Birdsong at Eventide.'

The evening opened with a Fanfare from the gallery and we were then treated to a wide range of glorious music.

In the first half the Frauenchor Choresang Caecilia Rachtig from Germany sang work by Mozart, Brahms and others. They were followed by an exemplary performance from Ratby Co-operative Mid Band, conducted by Geoff Newman.

Glenfield Ladies Co-operative Choir treated us to some popular songs, a theme continued at the start of the Co-operative Band's performance, which featured Irving Berlin and Rachmaninov. Musical Director Michael Fowles led the band and the returning choir from Rachtig in a rendition of 'Muss I Denn.'

After the interval there was familiar music played to perfection by the Senior and Mid Band, followed by fantastic performances from The Chantry Choir, and The Heart of England Barber Shop Chorus. The grand finale featured massed bands and choirs in a performance of the finale to Act 2 from Aida.

An evening to remember!

SB



## Box Brownie Photography

*Picture this...*

*Precious memories captured forever at affordable prices. Family celebrations, children's parties, special occasions. High quality, imaginative photography-special commissions welcome.*

*Looking for something different for your home or a special gift? See my range of mounted/framed original prints.*

**TEL: Anne Brown 239 5927 or 07868 730123**

## BEER FESTIVAL

Ratby's First Beer Festival was held at The Bull's Head during the weekend of 2<sup>nd</sup> to 4<sup>th</sup> September. The event was organised by hosts Phil and Marny to celebrate their first anniversary at the Inn.

A huge range of real ales were available, with a one-off brew created specially by the Brunswick Brewery in Derby. Blue Brass 2005 was named to celebrate Ratby Co-operative Band's recent Gold Medal success in Holland.

Members of the Band, performing as Blue Brass Oompah Band were also on hand to provide entertainment during the festival, along with Baker-Alles Blues Train, and Traditional Jazz.

Festival goers also enjoyed a hog roast on Saturday and Big Barbecue on Sunday.

Don't miss the next Festival in March!

SB



## A.H.COLEY

**Plumbing and Heating Repairs**  
**New Installations, Bathrooms, Showers**

\*\*\*\*\*

**For a full range of Services contact;**

**4 Saxons Rise**

**RATBY LE6 ONF**

**Telephone 239 4277**

## JULIE'S HAIRDRESSING

MAIN STREET RATBY

**Traditional and Modern Styling**

**Telephone 239 2406**



## Ferndale Community Park Group.

Thank you, to all those who took part in our **Treasure Hunt** on August 21<sup>st</sup>. On a beautiful Sunday we were overwhelmed with people wishing to take part. Indications are that around 90 people enjoyed the sunshine to answer the 20 or so questions and we raised **£180**. This money will go a long way in achieving our goal. Our thanks extend to all the shops who displayed our posters and also those who acted as ticket outlets. Thank you to Phil and Marni at the **Bulls Head** for your hospitality (community spirit is alive and well), the BBQ was perfect. Thanks to Ian and Carol Vernon for setting the questions. We hope everyone enjoyed the event and will support our future efforts. Together, we can make our village a better place to live.

The answers to the Treasure Hunt can be found on the Parish Council notice board at the library or at [www.ratby.info](http://www.ratby.info)

### CHRISTMAS TREE FESTIVAL COMES TO RATBY!

The Parish Church will be the venue for our very own Christmas Tree Festival during the weekend of 26/27th November. Nearly 30 organisations and individuals in the village are currently planning on contributing a decorated Christmas Tree for viewing by the public on the Saturday and Sunday. Also featured during the weekend are the Christmas Bazaar on Saturday morning from 10.00am with stalls and refreshments in the church and church rooms and also a concert on the Saturday evening by the National Church Lads and Girls Brigade Choir, starting at 7.30pm (tickets available at the door). We hope it will be a great way to kick off Advent and the run-up to Christmas in the village.



Learn to Drive at

# FOWLERS



All Levels of Tuition From  
**BEGINNER to MOTORWAY LESSONS**  
From Young to Old

Contact: **Pete Fowler** D.O.T. ADI  
**Tel: 0116 238 6165** Mobile: 07760 258700

## Ratby Village Society

'Hatched, Matched and Dispatched' could easily have been the title of the August talk given by Mr Kevin Lewis, the Chief Superintendent Registrar for the Leicester Registration District. Mr Lewis gave a brief history of the service from 1837, when the Civil Marriages Act of 1835 came into force. Prior to this only Church and Chapel weddings were legally binding. Nowadays many weddings take place in Registry Offices, where on a full day up to eleven ceremonies of thirty minutes duration can be carried out.

All births have to be registered within two weeks, and for over a century the certificates remained practically the same, but the multicultural society which has evolved has brought changes, particularly with regard to names. For instance the name Singh actually means 'male', so that girls born to Sikh parents can give rise to misunderstandings.

There are unusual choices of name. On one occasion parents entered the name 'Nipper', and one unfortunate boy was registered as Elizabeth. A family in Chesterfield tried unsuccessfully to register their child with 227 names, whilst The Guinness Book of Records lists someone with 26! Since 1979 Leicester has had 12 babies registered of undetermined sex. Since 1995 mothers have been required to declare their occupation.

For persons becoming Naturalised British Citizens a Certificate of Citizenship was all that was required until recently, but now a ceremony of Allegiance to the Queen and Loyalty to the United Kingdom has to be undertaken.

Given that there are dozens of different languages spoken locally, (sometimes being an interpreter) the job of a Registration Clerk is not an easy one!

WATCH  
BATTERIES  
& STRAPS

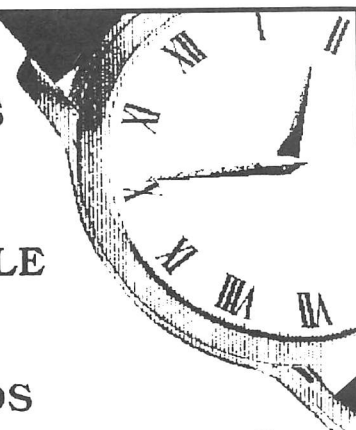
FITTED WHILE  
YOU WAIT

ALL BRANDS

## SYKES JEWELLERS

8 Bradgate Road, Anstey  
**Tel: 0116 236 2510**

[www.clockandwatchrepairs.co.uk](http://www.clockandwatchrepairs.co.uk)



## Ratby Parish Council

13 Station Road

Tel: 0116 2390167

### Finance

#### Ferndale Drive Community Park

Councillors were concerned about the misrepresentations contained in the last edition of Wot and give reasons for the loan.

The facts are that the loan was to assist cash flow. When large projects are undertaken it is normal practice for small councils to take out a loan for public works at a reasonable rate. When grant aid is acquired the invoice has to be paid before the grant can be claimed. The same applies to VAT which the Council is able to reclaim. In a small council the holding budget is not large enough to cover these amounts hence the need for a loan. With respect to this loan it is for a 2 year period and amounts to 20 pence per elector per year.

The scheme was always seen as a project that would take a number of years to complete and will be undertaken a phase at a time. Preparations for the next 2 phases, the Skateboard/BMX equipment and the Toddlers area are already being made.

The phasing takes account of the fact that funds are made available on an annual basis either as precept, or grants and utilizes this to spread the load over a number of years. The intention is that this will be as short a period as possible.

Many comments were made in the Parish Plan questionnaires during 2002/3, about the poor state of the Park. It was these comments that motivated the development of a Community Park appropriate for all ages.

### Other News

#### New Seat

A new seat has now been installed on the corner of Danehill and Station Road for all residents to enjoy however the Parish Council strongly request that all litter is placed in the nearby litter bin.

#### Rose beds and spring bulbs

As residents may be aware the rose beds along Markfield Road are now being removed, this is in response to a number of comments received about the state of the rose beds. The Parish Council is due to receive a large number of daffodil bulbs from Hinckley & Bosworth Borough Council to plant along our gateway verges and we hope to plant a number of these bulbs along Markfield Road in place of the rose beds. Other suggested areas are the high grass banks along Main Street, near the corner of Markfield Road, both entrances to the village and the grass areas around Desford Lane. If anyone would like to help with planting the bulbs which are due to arrive in October, please contact the parish office on tel. 0116 2390167 or call into the office.

#### Visiting German Ladies Choir

Members of the Parish Council were very pleased to meet the visiting German choir invited by Ratby Band on 19 August. Everyone had an enjoyable afternoon and the Parish Council exchanged gifts with the choir as a memento of their visit. A plate presented to the Parish Council is now displayed at the parish office. Members of the Parish Council attended the concert which was a huge success.

G Aldwinckle  
Parish Council Clerk

Mobile Phone Top-Up  
Cards now available

**VODAPHONE**  
**CELLNET**  
**T MOBILE**  
**ORANGE**

Going Abroad? Don't  
forget we can offer  
the following

**Travel Insurance**  
**Foreign Currency**  
**E111 Medical Forms**

Remember you can cash  
cheques and make deposits  
for these Banks at your  
local Post Office

**LLOYDS TSB CO-OP**  
**A & L GIROBANK**

**RATBY**  
**POST**  
**OFFICE**  
**Main Street**  
**Ratby**  
**239 3001**

And we also sell stamps!!!

6 Beeches Road  
Loughborough  
LE11 2NS

Dear Editor,

I was born and brought up in Ratby, I and my two brothers, Barry and Martin were all members of the Ratby Band, and my Dad, Owen Preston was the Band's Press Officer for a long time. My Dad died over twenty years ago, but my Mum, Linda, now aged 99, and her two sisters, Phyllis Devereux, aged 88, and Kathleen Brooks, 84 are all now living in Loughborough. My aunts lived in Ratby for over 80 years. I am sure there must be a lot of people in Ratby who remember them. If anyone would like to drop them a line to chat about the old days they would be delighted to hear from them. Please write to my address. A friend passes on 'Wot' to me and it often stirs up old memories for me.

Yours sincerely,  
Hazel Simpson. (nee Preston)

We're glad to hear you enjoy the magazine, and hope someone will be in touch. How about writing in some of your memories too? We'd love you to record some of your Aunts' stories. **Editor.**

Dear Sir,

In reference to last year's Hallowe'en Night and the practice of 'Trick or Treat,' in our case the printed leaflet distributed in the press, saying NO to Tricksters served no purpose at all. No-one knocked at our door, but on going outside we found the front of the building, car, windows especially, smattered with eggs and orange peel. There was also a noxious odour which we couldn't identify. As a couple of law abiding citizens of Ratby we now understand why people take the law into their own hands.

Disgusted Ratby Resident.  
Name and Address Supplied

**Editor's note;**  
Why not give our new Beat Officer a ring? Villagers .....Instead of a NO to TRICK or TREAT Poster in your window, perhaps a red rag to a bull, how about a poster saying TRICK or TREAT WELCOME, in windows of homes where this is the case. Parents can then ask children to only visit homes with this sign. How about it PARISH COUNCIL, could you produce such a poster?

## MEMORIES OF THE FLOODS

Dear Editor,  
Reading about the floods in your last magazine brought back many memories of when I was a child. When the brooks flooded, living 'down bottom of village' as it was called, we all went down to see the floods. It was quite exciting to see cars getting stuck in the water, or we thought so as children.

I remember the lads coming down in their wellies, of they were lucky enough to have any. If not, it was barefoot, trousers rolled up, to give the cars a push out of the water. They were then given anything from sixpence to two shillings, which was shared out afterwards. Quite a good little earner in a day, even though there weren't as many cars around then.

With sixpence we could have a bag of chips and a glass of TIZER at the chip shop on Burroughs Road. Ah! Happy days.

From 'An older Ratbian' not quite the thirties though... more the forties.

Jill Hurd  
(Address supplied)

PS Keep printing the old photos, they bring back so many memories.

**Editor's note;**  
We always want old photos and stories to print, so come on you villagers, let's hear your memories! What about that Chip Shop? Were you one of those lads?

## MARTIN TIBBLES

PAINTING &  
DECORATING  
SERVICES



22 YEARS EXPERIENCE  
EXCELLENT REFERENCES  
FREE ESTIMATES & ADVICE GIVEN

For all your home interior &  
exterior redecoration  
requirements by a qualified  
tradesman, contact Martin on

0116 291 0489  
07855 412945



23 /  
ww

## LETTERS TO THE EDITOR



Dear Parishioners,

May I take this opportunity to introduce myself as your Local Beat Officer from October 2005? I am thirty six years old and originate from North Yorkshire. I live in the county with my partner who is also a serving officer and my daughter.

I have served with Leicestershire Constabulary for six and a half years and during this time performed a number of roles within the organisation. I am currently the Community Officer for the Newfoundpool area of New Parks and prior to that served as Beat Officer for Kirby Muxloe for two years. I do therefore have some experience of Rural policing issues and will be bringing this with me to Ratby.

I look forward to this new challenge in my career and to working and developing good relations with the community. I can be contacted by leaving a message on my voice mail box.

Myself and colleagues will be out and about during Halloween and Pre-Bonfire night and would appreciate any support from the community during this time. So if you're out and about please be seen, be safe, and be vigilant and report anything untoward to us on the night.

Yours Sincerely  
Pc 4344 Annette Dowey  
Voice Mail Box

Dear Editor,

This letter is in response to the article in the last issue of WOT! and represents the views of the following people... all have endorsed the contents. Lorraine Turner  
Ian Vernon  
Mick Earl  
David Wright.  
Alison Godwin  
What a shame that 'name and address supplied' (issue 113 of WOT) had to be so negative about the developments at Ferndale Park. Does he/she not realise that it is being transformed from a 'dog toilet' into something that all villagers will be able to enjoy?

The investment in pathways, seating areas, community garden and play areas will benefit all user groups, including mums with double prams, disabled people in wheel chairs and old/infirm people on mobility scooters, all of which have been seriously overlooked in the past. I doubt the correspondent gave these user groups any thought when compiling his/her letter. I also notice that the hard work of the Ferndale Community Park Group has been overlooked. SHAME ON YOU! Years of under investment by the council left us with broken, unsuitable and unusable equipment. All of which are now being addressed. The tone of the letter smacks more of petty political point scoring than genuine concerns about the park's redevelopment. It's high time that people were a bit more positive about village improvements.

Nigel Burbage  
Address Supplied

## THE BULL'S HEAD, RATBY



- Up to 6 Real Ales
- Home-cooked Food
- Traditional Sunday Roast
- Xmas Bookings Now Taken
- Skittle Alley
- 2006 Good Beer Guide Entry

LEICS & RUTLAND CAMRA PUB OF THE MONTH, OCTOBER 2005

NEXT BEER FESTIVAL IS "LAST OF THE WINTER BEER"  
24-26 MARCH 2006

Main St, Ratby, Leics, LE6 0LN  
www.bullsheadratby.com

0116 2393256  
phil@bullsheadratby.com

## THE SERVICE GARAGE

MAIN STREET, RATBY  
M.O.T TESTS  
CARS (PETROL and DIESEL)  
And  
MOTORCYCLES  
M.O.T. HOURS 9.00-4.15 Monday-Friday  
Closed for lunch 1-2  
TELEPHONE 239 4966



## RATBY LOCAL HISTORY GROUP

We have not held a member's meeting since our very popular outing to Ludlow in June. However the Committee and helpers have been very active during the summer.

One of the many local items dealt with has been the issue of planned development works at 113 Main Street. This involves the construction of 12 houses, some of which will front onto Main Street, right on the edge of the conservation area.

The group submitted a very detailed and explanatory objection and supporting petition to Hinckley and Bosworth Borough Council.

Unfortunately, despite many objections the planners have now given approval to the scheme, and it is very much a question of watching this space!

Our next meeting will be on **Friday November 25<sup>th</sup> at 7.30 pm** in the Village Hall.

The first part of the meeting will take the form of a talk by Peter Liddle on **The abbeys and Priors of**

**Leicestershire.**

This will be followed by a short Ratby talk.

## THE OUTING

A true story sent in by Les Walton

A trip to Drayton Manor Park was the topic of conversation among a group of young chaps. The bus was full, and all were supplied with details of the day's events. Arthur, who had Down's Syndrome, informed everyone that he would be going on the Log Flume.

He was warned that he would get soaked, but his mind was set.

At 5pm it was time to leave. Everyone was accounted for except Arthur. No-one had seen him for some time. At 5.20 they found him, and what a sight he was, wet through, covered in mud and slime. He was a mess indeed, but no explanation was forthcoming as they boarded the bus for home. Arthur's parents were shocked to see him in such a state, and sent him straight upstairs to the bathroom. Ten minutes later queer noises and cries were heard from upstairs. They both went up, opened the bathroom door, - Lo and behold, an amazing sight greeted them.

Arthur was sharing his bath with a young penguin. He had smuggled the creature out after scaling a

fence at the park. He had shared his salmon and shrimp paste sandwiches with the penguin throughout the day.

Mum and Dad contacted the RSPCA and 'missing penguin bureau' quickly!

How can you not admire Arthur's initiative and determination!

## ARTICLES and PHOTOGRAPHS

Photographs and Memories of Ratby's Past are always welcomed, and very popular. Please give us a ring if you have any stories to tell.

Other articles and items which are of general interest are welcome too, but we may hold them over until we have space, as we need to prioritise topical items and information.

## THE ROYAL BRITISH LEGION RATBY AND DISTRICT BANCH

The Royal British Legion is a registered charity founded in 1921 to care for ex-servicemen and women of the Great War and their dependents when in need. The 'modern' Legion continues this work for all ex-service personnel, regardless of whether they have been in combat.

The Royal British Legion welcomes new members. It is not necessary to have served in Her Majesty's armed forces, and currently serving personnel are also welcome.

This district covers Ratby, Groby, Markfield, Desford, Kirby Muxloe, Thornton, Bagworth and Stanton under Bardon.

Meetings are held at the Groby Ex-servicemen's Club on the second Wednesday of the month at 8pm. All new members welcome, particularly those active enough to help in the aims of the RBL.

Further information can be obtained from the Branch Secretary on 287 0570.



## RATBY PHARMACY

58 MAIN STREET

LE6 0LL

Tel. (0116) 239 3139

**DISPENSING, FAMILY HEALTH CARE**

**and ADVICE, PHOTOGRAPHIC DEV.**

**\*OPEN ; Mon.-Fri. 9am -1pm, 2pm-6pm\***

**Saturdays 9am-12.30pm**

COLLECTION of PRESCRIPTIONS from  
L.F.E. RATBY GROBY GLENFIELD SURGERIES

## LISA'S IRONING SERVICE

A FAST, FRIENDLY, RELIABLE SERVICE  
PICKED UP AND DELIVERED FREE

Small basket £10

Medium basket £15

Large basket £20

PHONE LISA on 239 4420 or 07733 105374



## MOBILE HAIRDRESSER

**MEN and WOMEN'S**

**STYLIST**

QUALIFIED IN

INDIAN HEAD MASSAGE

*Mondays, Tuesdays, Thursdays,*

*Fridays*

*9 a.m. - 3 p.m.*

LISA 0116 287 1949

**GAS  
APPLIANCE  
SERVICES**

- Appliance Servicing and Installation
- Breakdown and Repair Services
- Plumbing and Heating Installation
- Kitchen & Bathroom Design and Installation
- Quality Guaranteed by Experienced Engineers



**YOUR DOMESTIC GAS  
BOILER SERVICED**

6 SAXONS RISE, RATBY, LEICS. LE6 0NF

■ Tel: 0116 2393662



## YOUR LOCAL ELECTRICIAN

**PAULS QUALITY ELECTRICS**

Fully Qualified City & Guilds Electrician  
Registered with the NICEIC Domestic Installer Scheme

Upgrading Old Fuse Boxes - Rewires - Alarm Systems  
New Sockets & Lighting - All Domestic & Commercial Electrics

Call Paul Rumble on: (0116) 2872338

## Porter's Discount Carpets

121/3 STATION ROAD, RATBY

TELEPHONE 239 3238 or 239 5202. MOBILE 07860 551142

QUALITY AT THE  
RIGHT PRICE



SHOP AT HOME  
SERVICE



Laminated Flooring

**FREE FITTING  
ON ALL CARPETS  
EXCEPT REMNANTS**



GEORGIAN  
CARPETS

## RATBY LIBRARY

Ratby's new library opened its doors for the first time on 19<sup>th</sup> September at 9.30am, and the visitors poured in. Staff were kept busy serving tea, coffee and biscuits all day, and were thrilled by the multitude of compliments they received on all aspects of the new building, throughout the day. The interior is light and airy, with an attractive white and blue décor. There is comfortable seating to relax in, new magazine titles to read, and an enlarged children's area.

The 6 public PCs, one of which is suited to young children, are free to use and give access to the Internet, Microsoft Office, FrontPage, Publisher and Photo Editor, and a scanner. The range of stock now includes graphic novels and DVDs for children. Provision of books in standard and large print, talking books, local history and reference stock, children's and teenage books is maintained. The Ratby Local History Group has its own notice board within the library.

A monthly story, song and rhyme session for children aged 3 years and under and their parents/carers, 'Wiggly Readers', starts on Thursday 27<sup>th</sup> October 2.00 – 2.30pm. Future sessions will be on the fourth Thursday of the month 2.00 – 2.30pm.

The official launch of the new library, attended by the Chairman of the County Council, is on Saturday 3<sup>rd</sup> December from 11.30am. Members of Ratby Youth Band will be playing on the day; other details will be announced nearer the date. Library staff are hoping that as many Ratby residents as possible will join them in celebrating the opening of the new library.

### MADE YOUR WILL YET?

"I can come to your home at a time to suit you and give professional, friendly advice on 'Wills' Trusts and Estate Management."

**Our Standard Will £19.95 + vat**

Also

Power of Attorney: Property Trusts:  
Will Storage: Inheritance Tax Wills  
Funeral Plans: Children's Trusts.

**Telephone Mrs Chris Thomas**  
**For an appointment or brochure**  
**01509 502264**

**In Home Legal Services**  
**Member of the Society of Will Writers**

The library is free to join. The opening hours are:  
Monday 9.30 – 12.30, 2.00 – 7.00

Tuesday closed.

Wednesday 2.00 – 7.00

Thursday 9.30 – 12.30, 2.00 – 5.00

Friday closed.


Saturday 9.30 – 12.30, 2.00 – 5.00

If you haven't yet visited, come and see what you are missing. The library is situated opposite the school on Main Street, and the telephone number is 0116 239 4530.

## TRAFFIC CALMING

Residents who have been suffering as a result of the Traffic calming measures, some of whom having written to Wot to voice their concerns, have now had letters informing them that the height of some speed tables will be reduced.

This will mean some disruption whilst the work takes place, but hopefully will result in less stress for those currently affected.



### OAKLANDS RIDING SCHOOL

WE CATER FOR EVERYONE FROM  
THE NOVICE TO EXPERIENCED RIDER

All weather riding area  
Ring Julie on 238 7570

## Bradgate Home Furnishings

9a Leicester Road Tel 0116 2366803  
Anstey Leicester

Mattresses  
Pine & Metal  
Beds  
Mexican Pine

Select A Bed  
Today  
Sleep On It Tonight

Stock Items  
Delivered Within  
48 HRS  
Divans

**Bunks Shop At Home Service**

Wardrobes

**WE DO MORE**

Chests  
Dining Suites  
Occasional Furniture

**The Nook Anstey  
Ample Free  
Parking**

Our Furniture Comes Fully Assembled  
Except Beds & Wardrobes



## SCOUT BBQ

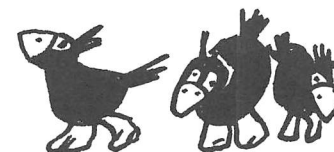
To the summer Scout Barbecue we did go  
Lots of sunshine and no snow.  
Burgers, hot dogs, salads and the rest,  
Time to chat and time to jest.

Old friends and new came along  
To be merry and have lots of fun.  
We tried to win one of the prizes,  
The quizzes were full of surprises

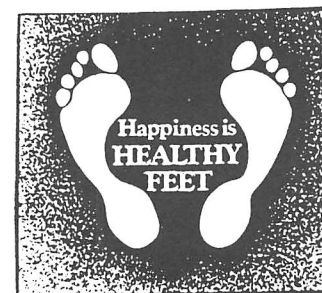
It got late, we had to go.  
I think they put on a very good show.  
My thanks go to the fundraising committee,  
For those who missed it, it was a pity.

These Scout 'do's' are so much fun  
And they're open to everyone.  
So look out for the next advertisement  
And come along, it will be money well spent.

Scout Supporter.



**Peter Comley, MSSCh. MBChA.**  
**REGISTERED WITH THE HPC**  
(Health Professions Council)



Visiting Chiropodist  
A Convenient & Professional Home  
Treatment Service – with over 10 years experience  
Tel: 01530 244887

## HIS and HERS

**LADIES AND GENTS  
HAIR DRESSING**  
OAPs REDUCED RATES  
Appointments not always necessary.

**156 STATION ROAD, RATBY**  
**239 4429**

## RECIPE

### CHOCOLATE MOUSSE

#### Ingredients

- 4 oz. /110 grs. Plain chocolate
- 1 tablespoon orange juice
- 2 teaspoons brandy or orange liqueur
- 3 eggs

#### Method

1. Put chocolate into a large bowl over a saucepan of hot water and leave until soft.
2. Add orange juice and egg yolks, and beat until the mixture slightly thickens.
3. Remove from heat and beat until cool.
4. Add the brandy
5. Beat the egg whites until stiff, and gently fold into the chocolate mixture.
6. Pour into 1 large or 4 glass dishes, and chill in the refrigerator.
7. Garnish with cream before serving.

Scrivener

**DEADLINE**  
**DECEMBER/JAN. ISSUE**  
**No 115**  
**FRIDAY 11th NOVEMBER**

Editor 239 3367  
Adverts 239 3279  
Articles may be sent to 3 Ingle Drived LE6 0NN  
Phone 239 4873 / sueboud@hotmail.com

## Florida-Orlando

Holiday in our  
4 bedroom / 3bathroom home situated on a  
superb resort 10 minutes from

Disney

**www.florida-resort-villa.co.uk**  
Tel: 0116 2387784 (Helen & Matthew)