

WOT !

About Ratby

Published by Ratby Scout Group



The School Lime Tree

On Thursdie it wer theer smellin all nice, an on Satdie it ud gone wi out nobdy sayin a word!

Ooz ed it?

For many old Ratby kids, this tree held a great deal of nostalgia. Sixty-eight years ago, we the undersigned, ebing in the infant's class at school, were privileged on certain occasions to press our faces against the railings beneath its branches to watch the hounds and huntsmen.

The Quorn Hunt met occasionally (and always on Shrove Tuesday) filling the area between the tree and the Bulls Head, prior to drawing the Burrough Woods, (with mine host at the Bull supplying the stirrup cup). Quite a village occasion.

Even more nostalgic to us, the fact that the tree provided our first inclinations of natural propagation. At the appropriate time of the year, we were allowed as a class to stand under the tree and catch the propeller like seeds as they spun and rotated off the tree in the breeze. A specimen seed was then taken into class to illustrate how self-propagation took place. (In the same context, we wondered how many "old kids" remember the jam-jar - blotting paper - bean seed exercise on the classroom windowsill, supervised daily by either Miss Cufflin or Miss Walters!).

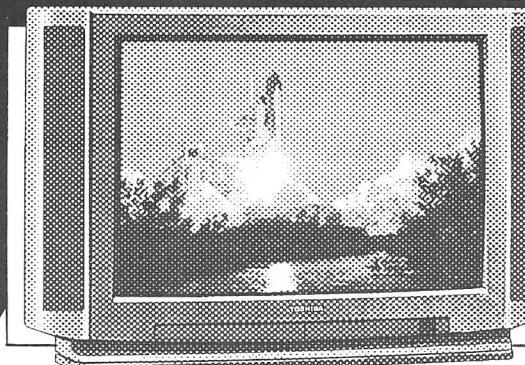
Any road, ooz ed the tree, weers it gone, un why! . . oowd tek a tree like that! Yer kernt leave owt about theys dee's can yer!

Wi suppose its chucked in a gateway at Motties Stile or sumweer.

Farewell old friend (1906 - 2000)
On behalf of
Several Old Ratby Wrinkles

EURONICS CENTRES

TOSHIBA - VIEWING IS BELIEVING!



TOSHIBA Nicam Television
● 28" 66cm Visible Screen Size
● Nicam Stereo Sound
● Fastext
● Matching Cabinet
Model 2893DB

£ 449.99

TOSHIBA Dolby Pro Logic Widescreen Television
● 28" 66cm Visible Screen Size
● Dolby Pro Logic
● 55W RMS Audio Output
● Fastext
Model 28W8DB

£ 579.99



TOSHIBA Nicam Video Recorder
● 4 Head Long Play
● VideoPlus+ Programming
● PDC ● Auto Set Up
Model V729B

£ 249.99

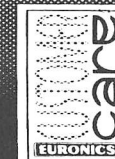
TOSHIBA DVD Player
● Bit Rate Display
● Dolby Digital
● Variable Zoom
Model SD2109B

£ 269.99



RTV

23-27 Station Road, Ratby,
Leicestershire LE6 0JQ
Tel: Leicester (0116) 2394544



● TOP BRANDS AT LOW PRICES
● SPECIAL OFFERS
● LOCAL DELIVERY
● GUARANTEED AFTER SALES SERVICE
● EXPERT STAFF

We are an independent retailer - with friendly local service and personal attention - but we're also members of EURONICS - Europe's biggest independent electrical buying group, which means we can offer you the very best deals on the highest quality brand names!



EURONICS CENTRES

Make your money go further!

RATBY BAND NEWS

The Band is now in the middle of its summer programme after a hectic contest season. On Whit Friday the band travelled to the Saddleworth Area (on the borders of Yorkshire and Lancashire) to take part in the annual Whit Friday March contests. Well over one hundred bands take part in this annual event and a good time is had by all. Bands from as far away as Switzerland and Norway took part. Our Junior Band participated for the first time playing in five villages. The Senior Band played in eight, what a night!

The Annual Junior Band Birthday Concert at Groby College was a great success, reflecting the patient dedication of their tutors. The Mid Band has been very busy too with contest successes at the prestigious Leicestershire Association event at Whitwick Leisure Centre and performances at Melton Mowbray and the very nice Whitwick Park. The Senior Band's performance at Thornton Church was very well supported. There is always a warm friendly atmosphere in this lovely old village.

Apart from a programme of fetes and local park concerts we have a couple of special events to look forward to. We have been invited to give a Sunday afternoon concert in St. James' Park, London. This will be something new for us and we are looking forward this special engagement.

A special night for us to look forward to will be Sunday September 17th when, along with the Desford Colliery and Ancient Order of Forrester's bands, we will be presenting a 'Top Brass' Concert at the De Montfort Hall. For tickets please ring Sheralyn Newman 238 6954.

We are already preparing for our visit to the Royal Albert Hall in October. Our conductor newly back from New Zealand is hard at work with the Senior Band members on the test piece 'Frontier'.

EVENTS DIARY

Sunday September 3rd Concert, Hollycroft Park, Hinckley at 2.30 pm

Sunday September 10th Concert, Bath Grounds, Ashby de la Zouch at 2.30 pm

Sunday September 17th Concert, De Montfort Hall, Leicester 7.30 pm



EDITORIAL

An apology for the delay in publication of this issue. The changed holiday pattern has created publication difficulties!

In this issue we print a letter from the Senior Librarian for the County, a response to the feature in our last issue. You may wish to respond.

Did anyone reply to the request for information about early village Carnivals for a television documentary? We'd love to hear about it!

RATBY LIBRARY SERVICES

Dear Editor,

LIBRARY SERVICE IN RATBY

I am responding to the article by Lynn Mellor in the June edition of 'WOT!' in which she states her observations on the library service in Ratby.

These are exciting times for public libraries and their users, due largely, but not entirely, to developments in computer technologies. Different approaches can be adopted in the design and delivery of services, and we can envisage much easier access to Lifelong Learning and to IT skills training. More information can be made available about library services.

Local Authorities are now being required to review all their services over a period of time and to seek to secure Best Value. One important aim of such reviews is to establish the best way of providing services for local people, and to involve them in the process.

The County Council undertook a review of its Libraries and Information Service from 1998 to 1999. This took a fundamental look at how the service was delivered and how it was used. It was recognised by the Council that its Libraries play a fundamental role at the heart of their communities. It was equally recognised that in some respects the Service could be improved significantly, and new standards were agreed as a basis for planning. Since then, as part of a six year implementation programme, an additional £160,000 has been spent on books, fourteen libraries have been added to the computer network, (18 still unconnected) and opening hours have been extended in some libraries.

The Government's 'People's Network' initiative aims to provide lottery money to equip all libraries with computers for public use by 2002. All Leicestershire libraries will be included in this. None of this will be at the expense of providing the best possible collection of books at all libraries. The policy for community libraries like Ratby is that

stock must be current and in reasonable condition.

At Ratby, over the last year, librarians have been working to improve the quality of books. Because many of the books which were not being used have been removed, regular users will have noticed a reduction in the overall quantity. Experience has shown that with a smaller, but better targeted bookstock, users find it easier to choose the books they want. The librarians regularly exchange the stock to try to ensure a regular supply of books new to Ratby.

The following items were bought for, or transferred to, Ratby for the year up to March 2000: Adult fiction, 2173, Adult non-fiction 535, Junior fiction, 620, Junior non-fiction 54 and talking books 41.

Opening hours are kept under review to ensure they are as convenient as possible. The last consultation with customers was in Sept. 1999, and the hours were amended as a result in Nov. '99. Regular review of opening hours gives an opportunity to respond positively to comments from users.

On the question of maintenance of the building's exterior, records show that all repairs have been carried out. There was a period when repairs were done prior to repainting, but this has now been completed. All library buildings are maintained to the County Council's standards and are redecorated on a planned programme.

The County Council welcomes the interest shown by the people of Ratby in their library service and I assure them that I am anxious to ensure that they are fully involved in planning the future of that service.

Yours sincerely

Peter Oldroyd
Chief Librarian

PIP'S PRIVATE HIRE

0116 239 0909

GROBY * RATBY * KIRBY

AIRPORTS * LOCAL & DISTANCE

- B'HAM & E.M.A.
- LUTON & HEATHROW
- OAP GREEN TOKENS TAKEN

Mobile Phone Top-up
Cards now available

VODAPHONE
CELLNET
ONE 2 ONE
ORANGE

Going Abroad? Don't
forget we can offer
the following

Travel Insurance
Foreign Currency
E111 Medical forms

Remember you can cash
cheques and make deposits
for these banks at your
local Post Office

LLOYDS TSB **CO-OP BANK**
A & L **GIROBANK**

RATBY
POST
OFFICE

Main Street
Ratby
Tel: 239 3001

And we also sell stamps!!!

POETRY CORNER

HOWLS OF PROTEST

CALL ME MODEM

One night while surfing the net
A gorgeous young girl and I met
But with sorrow I found
That she is mouse-bound
So that's as far as we get!

www.gobble/d/gook

Please never let it be said
that I got tangled up in the Web
Nor never, never, ever get
caught up in an internet.

I really do not go a bomb
on music from a CD Rom.
The idea of a floppy disc it
well and truly takes the biscuit.

I CAN LIVE WITHOUT IT

Never mind the E-Mail;
just give me a female!
There must be something better
than sending her a letter?

If lap top PC
means a girl on the knee,
and clad in software,
I'd sooner be there.

But the world of I.T.
is anathema to me.
I'll be happier when
someone invents the pen.

HOZ

Hoz tells us that two of his poems have been accepted for publication in the Autumn edition of The Rutland Magazine. Congratulations! *Editor.*

RATBY NEIGHBOURHOOD WATCH

Home Office Crime Reduction

Literature has been received from the Home Office concerning an £11.25 million fund. This is available for improving the home security of the over 60's, who are on income benefit, live in high crime areas and have applied for DETR new home efficiency scheme improvements. If you fit all of the criteria then you are eligible for free security measures such as door locks, window locks, patio locks and smoke detectors.

If you meet the above criteria, find out if you are eligible by ringing a **freephone number, 0800 952 0600**. The scheme will be explained and a surveyor will visit to assess the security of the property. Fitting is then arranged by appointed installers. Applications must come from the home owner.

The DETR new home energy scheme itself is designed to tackle fuel poverty and offers heating and insulation for those that qualify. Over 60's who are in receipt of a government benefit may qualify for this energy scheme and so the security scheme as well.

Just phone **0800 952 0600**

RATBY CROW PIE CARNIVAL



Were you there? Did your children enjoy the tea party and entertainment? Write in and let us know what you thought of the day. We aim to have a double page feature in the next issue. We'd welcome photographs too. Don't forget you can leave your articles in the library, or phone 239 4873.

L

Free First Hour

MELSWAY DRIVING SCHOOL

Mel Shipley D.O.T. A.D.I. M.I.A.M.
All ages welcome....and nervous pupils
Learn to Drive with Melsway
Telephone 238 6149
3 Barton Close, Ratby.

RATBY BIG TODDLERS

You may have heard about The BIG Foresters Toddle for Barnardo's which took place in June this year. Children under 5 were sponsored to toddle half a mile to raise money for the charity and their group.

Well, Ratby Pre-school Group organised their own event. On a glorious sunny June 10th (yes, we have had some sunshine!) 23 children, with parents and grandparents in tow, toddled half a mile around the Church rooms. Whilst having a really enjoyable time, the magnificent sum of £473.40 was raised!

25% of the money will be put towards new educational equipment for the pre-school. The Toddle gave us a reason to organise a special event as well help children who need our support. A BIG THANK YOU to all who participated!

Julie Leskevicius



Photograph of some of the playgroup children who took part in the BIG TODDLE

THE PLOUGH INN

BURROUGHS ROAD, RATBY * Telephone 239 2103

Come in and try our NEW a la carte Menu
Lunchtime offers Monday to Sunday, and Saturday & Sunday evenings.
FREE meal for a child (under 10) with every adult meal.
Monday to Friday...2 Course meal for pensioners

SUNDAY LUNCH
2 Courses for £5.75 * from 12 until 2 pm
MONDAY TO SUNDAY
2 Set Menus at £13 for 2 or £7.50 for 1

TABLE SERVICE

SUNDAY EVENING ENTERTAINMENT; QUIZ
KARAOKE on the last Sunday in the month

LETTER

AUSTRALIAN NIGHT AT THE BOWL

On Friday 21st July myself and Rob Payne (SL for Ratby Scouts) took over a dozen scouts for an 'Australian' theme bowling night at Leicester's Superbowl. A fun and exciting evening was had by all, with 'Aussie' Song sheets, translation sheets, animal masks, party blowers and balloons being provided by Superbowl. We were divided into three teams for two games of bowling and a burger meal. Scores were wide ranging from the novices to the pros.

We are hoping to visit the Bowl later in the year when hopefully more people will be able to attend. Low numbers this time were due to it being the July fortnight. When we do go again I'm hoping for more scouts to attend so that we can secure a bigger 'scout discount!'

Tracey Bowley (Adult helper, 1st Ratby Scouts.)

3 Ingle Drive
Ratby

Dear Wot Readers,
I am currently studying the distribution of **bats** in and around the village for my final year dissertation at UEA. I would appreciate any information about the presence of bats in the village. Perhaps you regularly see bats in your garden or elsewhere in the village. They may even roost in your garden or buildings. Please ring me on 239 4873, or e mail me on amy.fj.boud@talk21.com
I will be away on an environmental work camp until mid September, but my family will take messages. Thank you.

Yours sincerely,
Amy Boud.

DOWN IN THE DUMPS

Thank you to all those who answered the appeal in the last issue of WOT for details of the First World War explosive magazines (known locally as the 'Dumps'). I've now learned that one was situated just to the east of where the motorway roars over the bridge spanning the bridle way along the former railway trackbed. It is remembered as being derelict fifty years ago when some of the local lads used it as an adventure playground. Less than ten years ago it was still recognisable as a railway installation, but is now covered by spoil generated by the building of the A46 Western Bypass. After the sale by the War department it became the property of the local Brooks Farming family.

Not only was the second site identified, but a photograph taken in 1922 by Mr Leonard Wheeler when he bought the site, together with sidings for the Alexandra Stone Co. Ltd. has been loaned to us. His grand daughter provided a brief history of the Company which had been in operation since 1912 in Nuneaton. The magazine buildings still exist, albeit surrounded by newer and larger buildings, and can be readily identified by reference to the photograph from Desford Lane. Such information as this is welcomed by the Millennium Photographic Project, which now has over 300 photos scanned. We still need good (old) photos of The Plough and Railway Inn.

If you can help please ring 0116 238 7240.

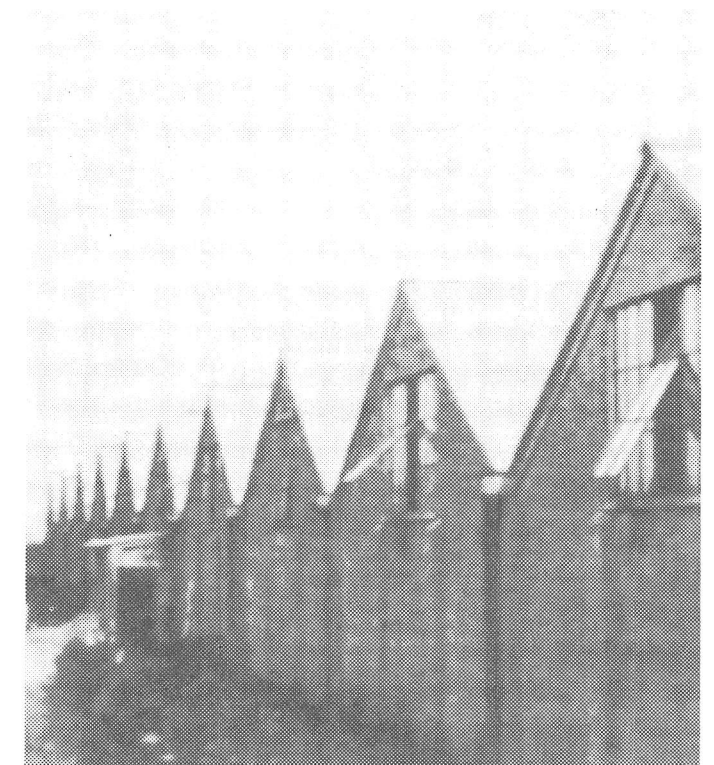


A. H. COLEY

Plumbing & Heating Repairs,
New Installations, Bathrooms, Showers,

For a full range of services contact:

4, Saxons Rise
Ratby
Leicestershire LE6 0NF
Telephone: 0116-2394277



Photograph of the old Dumps at the time of their purchase by Mr Leonard Wheeler.

Penthouse Carpets Ltd.

GEORGIAN CARPETS
ANTRON®
STAINMASTER®
CARPET CERTIFIED BY DU PONT

Thousands of Patterns to choose from
£3.99-£45.50 sq. yd.

NEW!
Scotchgard
STAINRELEASE

Armstrong

NAIRN

AXMINSTERS
TWISTPILE
SAXONY
SCULPTURED
FLOTEX

SCOTCHGARD
BERBERS
HUEGA TILES
CUSHIONFLOOR

LAMBSKINS
BOWRON

TREDPAIRE

Duralay

UNDERLAY
£2.50
sq. yd.

FREE FITTING

SHOP AT HOME SERVICE

PORTER'S DISCOUNT CARPETS

121/3 STATION ROAD
RATBY, LEICESTERSHIRE
Tel: 2393238/2395202

CASTLE OPTICIANS

AN INDEPENDANT PRACTICE

- EYE EXAMINATIONONS
- FRAMES AND LENSES AT COMPETITIVE PRICES
- PRESCRIPTION AND NON-RX SUNSPECS
- DAILY & MONTHLY CONTACT LENSES
- NEW VARILUX PANAMIC VARIFOCALS
- ANY OPTICIANS PRESCRIPTION WELCOME

CALL IN OR PHONE FOR AN APPOINTMENT

0116 239 4288

47 MAIN STREET
KIRBY MUXLOE

Ratby Parish Council

"Told You So!"

For those of you who had not heard the rumours, the news that the petrol garage, bus company and land behind it were to be turned into 51 Wimpey houses must have come as something of a shock! Many people were asking if the stories were true and seemed to have a lot of detail, all of which was later proved to be accurate. The Parish Council had discussed the rumours (all the versions!) but could not get anyone to admit that there was anything going on. The Hinckley and Bosworth Borough Council were unable to help, as they had not received a planning application. The landowners flatly denied the whole thing. Following the planning application to the Borough Council, the planning sub-

committee of the Parish Council, chaired by Mrs Merle Joyce, submitted its objections. If the plans are approved it will mean that this part of the village will no longer have a feeling of the countryside. There are too many houses proposed and they are not of a style that fits in with the rest of the village. There appears to be insufficient parking spaces and more thought is required for the proposed new junction with Station Road and Danehill. The flood plain is currently in the plan as part of the required open spaces! The plan will go before the Borough Council planning committee on July 18th so at the time of going to press it is not possible to report further.

Flowers and Trees!



There are many old trees in the village, some of which could no doubt tell us a lot of stories about the past in Ratby! It is possible to obtain Tree

Preservation Orders for trees that are old, special or in danger of future development and there are already many trees in the area that have such orders. We are launching a project to identify every tree that we consider should be preserved and we are also going to check the trees that have existing orders.

This is a big task and we are looking for help! If anybody is interested, please contact the Parish Council office. Plans are also in place to make the village more attractive. This will include flower displays at each end of the village and raised flowerbeds at other strategic points. As our plans progress, particularly next Spring, perhaps there will be enough interest to consider entering in the Best Kept Village competition...

*Don't forget that we now have our own office at 13, Station Road.
Come and see us if you have something to ask or discuss.*

Office Opening Times:

Monday	3.30 – 5.30pm
Tuesday	9.30 – 11.30am and 7.00 – 9.00pm
Wednesday	Closed
Thursday	9.30 – 11.30am
Friday	9.30 – 11.30am

Or by appointment outside these hours



Ratby Parish Council

Traffic Troubles

Some of you may have seen an odd bunch of people walking round the village a few weeks ago! There was the Chairman, Vice Chairman and other members of the Parish Council plus a fluorescent-yellow-coated visitor. A closer look would have revealed that it was Inspector Stef Pandit from the New Parks police station and he wasn't here just for the sightseeing as there was a serious purpose to the walkabout.

We were looking at some of the parking and speeding problems in Ratby. It was accepted



that the extent of the parking problem in Chapel Lane and Berry's Lane couldn't

be judged in the daytime so Inspector Pandit will organise his beat officers to carry out periodic checks in the evenings. There are also (seemingly) abandoned cars in that area all of which were noted and will no doubt be removed in due course.

Other ideas were considered to alleviate the parking problems, even to the extent of converting a piece of lane owned by the Parish Council into a car park. The problem with this is why should some residents be able to park outside their own property while others have to park somewhere else and walk the rest of the way home?

Inspector Pandit summed up the whole problem when he commented that where people park is often "inconsiderate but not against the law".

Little progress was made in a discussion about speeding round the bend in Main Street and on through the village. It appears that we are unlikely to be allowed traffic calming measures - as there have not been any accidents it would not be a priority for the Borough or County Council. The point was again made that police speed monitoring proves that nearly all the culprits lived locally!!

Member of Parliament
The Rt. Hon. Stephen Dorrell, MP
will be holding a surgery at the
Parish Council Offices on
Friday 22nd September at 7.30pm

**This is your opportunity to ask those questions
you never thought you'd get to ask!**
For more information, contact the Parish Council offices

Playground Safety

Some of you may have seen an article in the Leicester Mercury a few weeks ago entitled "How safe are our children?" The article questioned whether the maintenance of playground equipment meets required European standards. We can reassure you about the playground equipment in Ratby. A new European standard was introduced on 1st

January 1999. It is neither mandatory nor retrospective but obviously it is recommended that it be followed. An Inspector from the Royal Society for Prevention of Accidents has checked the playgrounds at Ferndale Drive and Burroughs Road in 1999 and 2000. Our fully trained maintenance employee also carries out regular checks.

Police News

CAN YOU HELP SOLVE A CRIME?

The word **CRIMESTOPPERS** is probably familiar to many readers. It is mentioned in the Leicester Mercury almost every night, it is in the phone book and even on milk floats, yet there is still a great deal of confusion as to what it is and, just as importantly, what it isn't.

Crimestoppers is a special information line. You dial the special number and this puts you in direct contact with the police where you can give information about a crime *without* disclosing your identity. The Crimestoppers number given below is specifically for information to be given anonymously. It is in addition to the emergency number 999 and the local police number 2 222 222, with which everyone should be familiar.

The scheme is a partnership between the police, the community, local business and local media. It has one single aim – to reduce crime. In our community it is almost certain that someone will have vital information that could help to solve a crime but is not prepared to give their name or, more particularly, to give evidence in court. This could be for a variety of good reasons but in the main it is probably because they fear a revenge attack of some description.

CRIMESTOPPERS
FREEPHONE NUMBER
0800 555 111
REMEMBER IT'S SAFE TO TALK

HEALTH AND SAFETY

If you find a used needle or syringe in a public place the correct procedure is to notify the Hinckley & Bosworth Borough Council on the special Helpline number given below. The ideal situation is for someone from the Council to come and remove it straight away. Obviously, that will not always be appropriate and in that case you should pick it up (from the safe end) and put it in something safe (such as a plastic soft drink bottle). *Always use gloves.* Then contact the H&BBC and they will come and collect it. The Helpline number is **01455 232744**.

Please note – if you find a syringe or needle on what you *know* is Parish Council land (for instance, the children's play areas in Boroughs Road and Ferndale Road) then phone the Parish Council office on 2390167 as the maintenance team have procedures for the clinical disposal of such items.

Crimestoppers guarantees complete anonymity. Nobody will ask your name. The phone call is free and there may even be a reward if the information results in an arrest. The most often asked question is can the caller *really* remain anonymous? The answer is, emphatically, YES. Even the payment of a reward is made without identifying yourself.

Crimestoppers is a success. The scheme has been running in America since 1976. It started in the UK in 1988 and, since that date, over 35,000 people have been arrested and more than £46 million worth of goods recovered. In Leicestershire alone, during 1999, 751 calls were made, which resulted in 131 arrests and more than £90,000 in goods and drugs were recovered. So you see, it really does work!

Crimestoppers can only work if the community supports it. Everyone must pass on those vital pieces of information. To help you there are supplies of the Crimestoppers cards in the local shops to remind you of the telephone number. Keep one in your purse or wallet. You never know when you might need it...

HELP WANTED

The Ratby Welfare Hall is currently closed for refurbishment and the builders work has now started.

It was expected that the hall would be re-opened in September, but due to unforeseen problems and extra items found to be in need of attention, the contractors works have been delayed.

Dealing with the problems and extra work will cost the Ratby Senior Citizens Welfare Association an additional £5000 above their original stretched budget. They just do not have the money!

So can you help with a donation, after all it's your own village's Welfare Hall. It is not just used by the elderly; it is there as a facility for all in the village. In fact many people refer to the building as the Village Hall.

Any donation, however large or small would be gratefully received.
'Let's not spoil the ship for a halfpenny worth of tar.'

Please help by sending a donation to:-
Ratby Senior Citizens Welfare Assoc:
C/O Mrs Sue Neilson
33 Danehill
Ratby

QUALIFIED VISITING CHIROPODIST

Peter S Comley MSSCh. MBChA

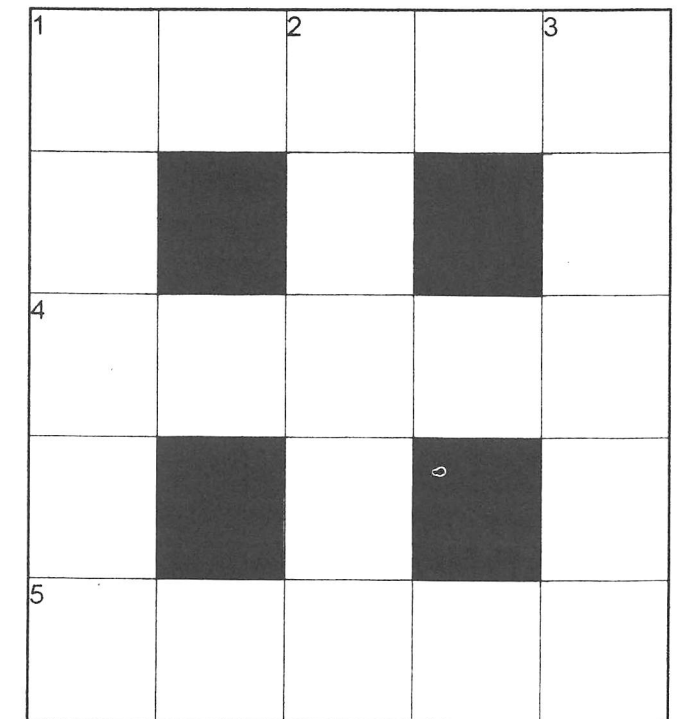


Markfield 01530 244887
24 Hour Ansaphone

Offers a Convenient & Professional Service
Registered Member of the
British Chiropody Association

**'Wot ! About Ratby is published by
Ratby Scout Group.**

So Easy Cricket Crossword



Clues

Across

1. 11 players make 1.4
4. A short pitched ball by fast bowler to timid batsman is
5. The pace of slow run getting

Down

1. The most famous Trophy
2. A bye is called one
3. Presented at end of season

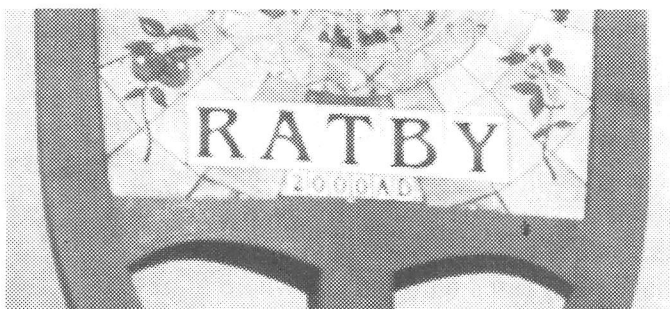
CALLING ALL VILLAGE GROUPS

Don't forget, all non-profit making groups can have a free quarter page in Wot! Make sure the village knows what you are doing, advertise your fund-raising events, send us pictures of those special occasions. Help to make the magazine a real village enterprise.

VILLAGE MILLENNIUM UPDATE

Welfare Hall Refurbishment :- This major millennium project, which is being undertaken by the Ratby Senior Citizens Welfare Association, is now in progress. The hall is closed for the whole of August and into September. It should be ready to re-open sometime during September. All of the groups who use the hall are looking forward to the eventual upgraded facility.

Crow Pie 2000 Weekend :- The events over the 12th and 13th of August will probably have taken place by the time that this edition of WOT drops through your letter-box. Well done to both the Band and Tea Party Group who organised things. Also again many thanks to the companies and local businesses, as previously listed in earlier Wot magazines, who have donated towards the children's tea party.



Pabari's Rathby News
5 Station Road, Rathby.
Tel. 0116-2393267

For the Largest Selection in Rathby of
Beers, Wines and Spirits.

A vast choice of Confectionery and Soft Drinks.

A Large variety of Greeting Cards, Wrapping Paper
and Stationery.



Newspapers & Magazines.
Delivered to your door daily.

We are the agents for
SKETCHLEY DRY CLEANING.

Video Rental & Photocopying also available.

Opening Hours:
Mon - Fri 6.15 am to 1 pm & 2.30 pm to 10 pm.
Saturday 6.15 am to 10 pm.
Sunday 7.30 am to 2 pm & 7 pm to 9 pm.



COME IN AND SEE FOR YOURSELF

RATBY VILLAGE SOCIETY

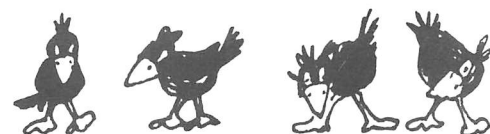
In contrast to the previous meeting, which was all doom and gloom, the June assembly was treated to an evening of fun and laughter by professional story teller Roy Dyson. Not only did he spin some fascinating and far-fetched yarns, but also sang, played a tin whistle, performed on a drum and encouraged us to sing along and do some paper sculpture too!

It was not all light-hearted though, because he enthralled us with his version of the local legend of the Church Farm ghost, 'The Silk Lady'. This year's July afternoon outing attracted twenty-two members to the National Forest Visitor's Centre at Moira, a new nature-orientated venue containing a lake, woodland walks, craft workshops and a splendid adventure playground for children.

An excellent lakeside restaurant is on hand to restore the well being of visitors after walking the woodland trails, or one

can enjoy an al fresco meal in one of two picnic areas.

Nearby is the restored Moira Blast Furnace and Ashby canal basin set in woodland park.



JULIE'S HAIRDRESSING

MAIN STREET, RATBY

**Traditional & Modern
Styling**

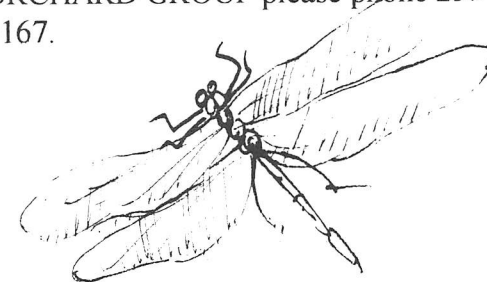
Telephone: 2392406

RATBY COMMUNITY ORCHARD

This has been a good season down at the Orchard site. Careful mulching and pruning has resulted in some healthy organic apples.

Frogs, and even a newt have been sited at the pond, and there is evidence that over 50 dragonflies have 'hatched' at the site. Watch out for notices about the next great **APPLE DAY** in October. We hope to unveil the new interpretation boards at the event.

If you'd like to know more about the ORCHARD GROUP please phone 239 0167.



DEADLINE FOR October/ November ISSUE

September 21st

You may leave items in the Library
or send to
10 Groby Road or 3 Ingle Drive

Editor 239 3367
Adverts 239 3279
Articles 239 4873

**GAS
APPLIANCE
SERVICES**

- Appliance Servicing and Installation
- Breakdown and Repair Services
- Plumbing and Heating Installation
- Kitchen & Bathroom Design and Installation
- Quality Guaranteed by Experienced Engineers



**YOUR DOMESTIC GAS
BOILER SERVICED**

6 SAXONS RISE, RATBY, LEICS. LE6 0NF
■ Tel: 0116 2393662



RECIPE POTATO SALAD

Ingredients

- 1 lb potatoes (new and small or old waxy variety)
- 2 Tablespoons salad cream
- Mayonnaise, salt and pepper as required.
- 4 Spring onions chopped
- Snipped chives and chopped parsley.

Method

1. cook potatoes (dice large ones)
2. drain and sprinkle with salad cream, then leave until cold.
3. mix with mayonnaise, salt and pepper
4. sprinkle with onions, chives and parsley and serve cold.

COLESLAW

Ingredients

- 4 oz cabbage (savoy is very good)
- 1 oz grated carrot
- 1 oz finely chopped onion
- Mayonnaise
- salt and pepper to taste

Method

1. Slice heart of cabbage very finely and wash well in cold water. Dry thoroughly and put into bowl.
 2. Mix carrot and onion with cabbage and bind with mayonnaise. Add seasoning.
- Chopped apple, walnuts or celery can be added to give extra crispness.

Scrivener

