

# WOT!

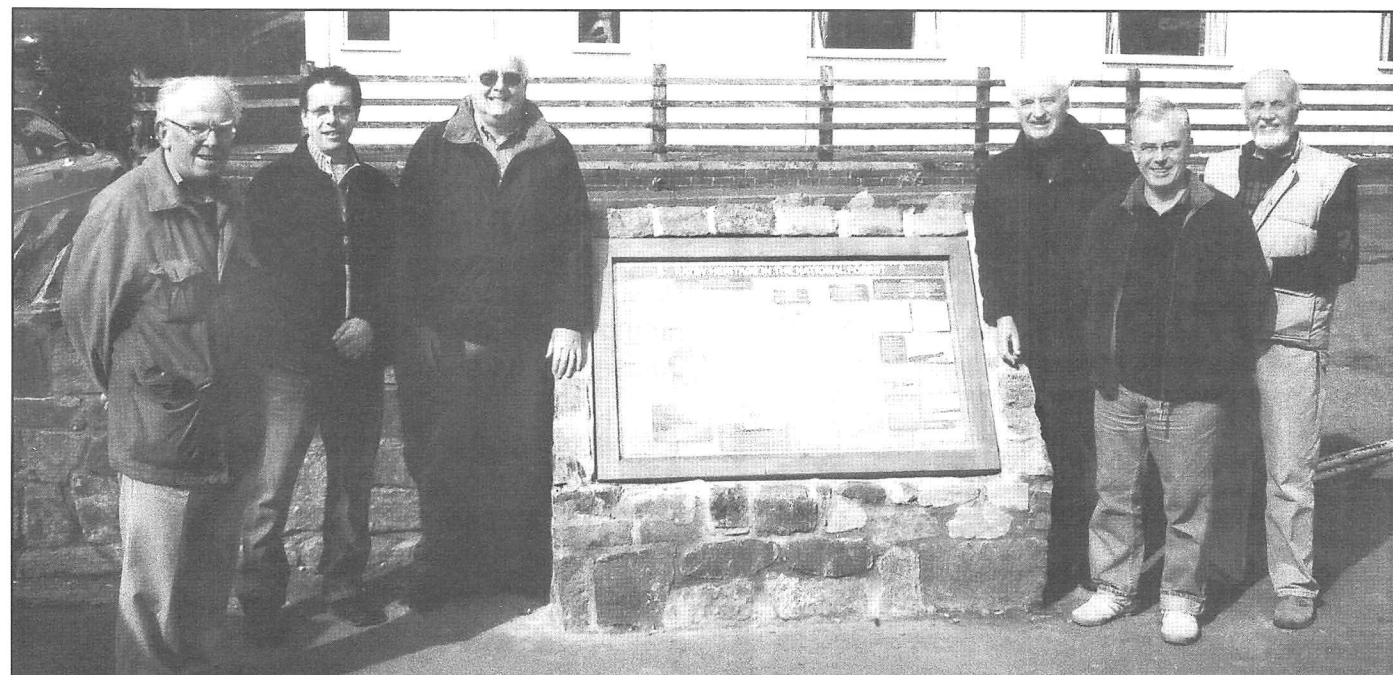
About Ratby

PUBLISHED BY RATBY SCOUT GROUP

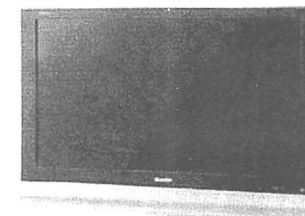
## GATEWAY TO THE FOREST

### RATBY LOCAL HISTORY GROUP

The photograph shows the new Heritage Information Board which was erected at the entrance to Burroughs Road on 11<sup>th</sup> April 2006. The eastern boundary of the National Forest follows the line of Desford Lane, Main Street and Groby Road in Ratby. The Burroughs Road is therefore one of the 'gateways' into the Forest. The Board includes a map of the area to the west of the village and illustrates heritage features with photographs and captions. Alan Blanchard of the Ratby Parish Plan Committee provided the initial inspiration and organised the construction work. Doug Harwood, with advice from the committee of Ratby Local History Group provided the base map, illustrations and captions. The artwork has been designed by Tim Taylor who has previously produced display boards for the Parish Church and Community Orchard. The project was funded by 'Landshapes,' a subsidiary of the National Forest Group and Heritage Lottery Fund. We hope that you enjoy this addition to the village landscape, and that it will encourage you to walk in the area.



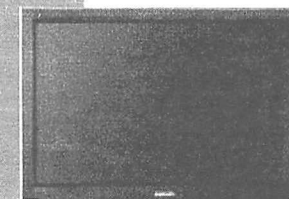
## BACK OF THE NET BARGAINS!!



**SHARP  
DIGITAL  
FREE-  
VIEW  
HDMI  
LCD TV**

**WAS £799.99 NOW**

**£599.99** LC-26P70



**SAMSUNG  
HD  
READY,  
DIGITAL  
FREE-  
VIEW  
PLASMA**

**TV MODEL PS42E7HDX  
NOW ONLY**

**£1399.99**

**WE RENT TV/VIDEO & WASHING  
MACHINES** WE ALSO DO ALL AERIAL /  
INSTALLATION WORK FROM PLASMA TV ON WALLS TO  
PROJECTION SCREENS IN PUBS!

**FULL RANGE OF  
SEBO & DYSON  
CLEANERS IN  
STOCK!  
CREDAS  
TUMBLE DRY-  
ERS £179.99**

FREE LOCAL DELIVERY!!

## RATBY TV

**23-27 STATION  
RD, RATBY 0116**

**2394544 8:30-5:30**

**MON-SAT E-MAIL US AT  
MIKEHURST.RTV@BTCONNECT.COM  
FOR FAST FRIENDLY SERVICE.**

**EURONICS**

**PLUG INTO SERVICE & PRICE**



Get **connected** to your  
local **Euronics** store!

## LETTERS TO THE EDITOR

### SHOULD WE WIDEN THE M1 THROUGH LEICESTERSHIRE?

Who benefits from the spending of huge amounts of public money increasing the number of lanes from three to four, in both directions?

- ♦ First, Cousin Dave's successors. Men with strong arms and broad backs who earn good money doing the building work.
- ♦ Second, the contractors who receive even more money for sitting in a distant office planning the project. I met some of them yesterday. Nice suits.
- ♦ Third, in theory, the transporters of apples from Poland who will momentarily be able to cut a few minutes off their journey. That will happen sometime after 2015 and cease long before 2050 when it is predicted all traffic will come to a standstill.
- ♦ Fourth, because a low decibel surface will be used and a few extra noise bunds constructed, those few motorway neighbours who are disturbed by the noise.

### OAKLANDS RIDING SCHOOL

WE CATER FOR EVERYONE FROM THE NOVICE TO EXPERIENCED RIDER  
All weather riding area  
Ring Julie on 238 7570

## MATHS TUITION

Worried about exams coming up? Need some extra help?

One to One Tuition in your own home.  
"One off" or regular weekly sessions  
Age 13-101 (up to G.C.S.E. Level)

Contact NATALIE TARRY on 0116 2390 638  
for more details

Who will lose out?

- ♦ Primarily those of us who pay for the project through our taxes. (I can think of other ways to spend the money.)
- ♦ Secondly, those who live around the construction site access routes. There will be noise, dust, debris 24/7 for the duration.
- ♦ Thirdly, the environment. Short term through collateral damage and long term because more long strips of land will be buried under tarmac with a consequent loss of thousands of trees and, more seriously, surface drainage.
- ♦ Finally, the nation because we aren't tackling the fundamental problem. Why do we have to travel so much?

Well, round one is complete. The suits have kindly shared their plans with us; and it was a well produced exhibit.

Whatever the decision it is unlikely to affect me. But some of you may have longer to live and my CHALLENGE to you is: take an interest, respond to the questionnaire you have already received or at [www.highways.gov.uk/m1eastmidlands](http://www.highways.gov.uk/m1eastmidlands). YOU CAN MAKE A DIFFERENCE

Kate Goode, Taverner Drive

Dear Editor,

10 Woodley Road

On behalf of the Ratby Senior Citizens' Welfare Association, (Village Hall) the Committee would like to thank all those people who donated money to the Village Hall in lieu of flowers on the bereavement of Sue Neilson in January. The collection realised £258.

Sue was our treasurer for the last five years, doing a very good job. She will be sadly missed by us all.

We would also like to thank those people who give us donations on a regular basis. They are always gratefully received. The money raised will help with new small tables we are requiring. Once again, many thanks.

Mrs D Smith  
Chairperson

## RATBY METHODIST CHURCH SO WHAT'S NEW?

The president of our Methodist Church, Rev. Tom Stuckey brings to our notice a Government initiative in a bid to curb global warming.

Apparently grants totalling £80 million will soon be made available to the most unlikely of organisations in an effort to encourage use of renewable energy. Schools, Community Groups, Churches and Householders will be encouraged to install wind turbines, solar panels and other systems. (Is the writer alone in remembering the time when all we needed to do was put a Bob in the meter?)

A Government spokesman says, 'We are very keen to get highly visible buildings involved, such as churches, so that people may see an do likewise.'

Our churches' 'Working Together Committee' will maybe reflect on this proposal, meanwhile a touch of speculation may be in order. Surely a neat little wind turbine on the flagstaff of our Parish Church would attract community attention, and the odd solar panel in the Chapel ceiling could impart an extra glow in the congregation.

Is it not ironic that for centuries our churches have been generating their own particular renewable energy from such an infinite power source?

Any views from the village on this? Editor.



## MADE YOUR WILL YET?

"I can come to your home at a time to suit you and give professional, friendly advice on 'Wills' Trusts and Estate Management."

**Our Standard Will £24.95 + vat**

Also

Power of Attorney: Property Trusts:  
Will Storage: Inheritance Tax Wills  
Funeral Plans: Children's Trusts.

Telephone Mrs Chris Thomas  
For an appointment or brochure

**01509 502264**

In Home Legal Services  
Member of the Society of Will Writers



## "DOING A ROLF"

### RATBY VILLAGE HALL ART CLASS

Julia Kent, the tutor purchased a print of VE Day (1945) by L S Lowry - and then cut it up into twenty sections.

Each class member was given one or more sections to reproduce using watercolour paint and pencil crayons to copy Lowry's style.

All the sections were then fitted together to produce the picture you see here. The painting itself will be on display at Ratby library 12 - 26 June 2006.

## RATBY PHARMACY

58 MAIN STREET

LE6 0LL

Tel. (0116) 239 3139

**DISPENSING, FAMILY HEALTH CARE  
and ADVICE, PHOTOGRAPHIC DEV.**

\*OPEN ; Mon.-Fri. 9am -1pm, 2pm-6pm\*

Saturdays 9am-12.30pm

COLLECTION of PRESCRIPTIONS from  
L.F.E. RATBY GROBY GLENFIELD SURGERIES

**GAS  
APPLIANCE  
SERVICES**

- Appliance Servicing and Installation
- Breakdown and Repair Services
- Plumbing and Heating Installation
- Kitchen & Bathroom Design and Installation
- Quality Guaranteed by Experienced Engineers



**YOUR DOMESTIC GAS  
BOILER SERVICED**

6 SAXONS RISE, RATBY, LEICS. LE6 0NF

■ Tel: 0116 2393662





## RATBY REVELLERS

The following poem celebrates the renowned 'Ratby Revellers' who entertained the village for many years, and who now meet up every Monday morning for coffee. If you saw them in action we'd love to hear from you!

### An Ode to the Monday Morning Gang

First there's our Elaine or P.F. Sharp as she's known.  
Very clever! But not much good on a mobile phone.  
She's an eye for a bargain, there's no doubt,  
No matter how far she'll sniff it out.  
She looks after me like a mother hen.  
She even takes me out now and again.  
Her positive thinking gets me through,  
Without her I wouldn't know what to do.

Then there's Pat W better known as Auntie Wainwright,  
Sells you anything, or she tries with all her might.  
She could sell sand to the Arabs if she tried.  
When we see her coming we run and hide.  
But she's a good sort and helped many a few,  
So stick around and she'll be there to help you.

Now there's our Win always ready to lend a hand.  
One of the good old sort, not many left in this land.  
Always out and about, and off into town,  
Wearing a smile and never a frown.  
To her helping out is no bother,  
Unless of course she's got a better offer.

Then there's little Brenda who came along with Win.  
She sits quiet but sometimes puts her two-penneth in.  
Smartly dressed, everything always matching she always buys,  
But we don't care as she makes lovely mince pies.

There's our Mollie with all her crafts so fine,  
Sometimes too busy, even for a glass of wine.  
With all her pictures, jewellery and dressmaking  
She still finds time to do some baking.

Then there's Pat B known as 'Miss Bluebell'  
A clever lady with so many talents as well.  
She taught us how to dance and sing,  
About showbiz she knows everything.  
Though once she was crosser than we'd ever seen her  
When we tried to sing 'The girl from Ipanema'  
There's no doubt she's the lady of our group,  
You'd never catch Pat slurping her soup.

There's our Kath speeding about on her scooter  
Up and down the village, waving to all and pipping her hooter.  
Speeding past bikes, cars and even a bus,  
She doesn't see the reason to make a fuss.  
Now 'slow down Kath' we all shout  
'It's OK,' she says, 'no coppers about.'  
We just want to keep her safe, so she can bake  
Some more of her delicious chocolate cake.

Now there's our Marg, a lovely lady I have to admit,  
But her clocks do need adjusting a bit.  
At timekeeping she's never been great  
She always manages to arrive a bit late.  
It's never been known for her to arrive on the dot.  
She really must get a little hand put on that clock.

Now at last there's me, nothing much left to say,  
Because I'm not much good at fancy cooking or sewing,  
That's why I thought I'd sit and write this poem.  
But I'm so grateful and proud  
To be one of this wonderful 'crowd'  
No better friends could ever be found  
I'm just so lucky to have them around.

JH

## PABARI'S RATBY NEWS

5 STATION ROAD RATBY  
0116 239 3287

For the Largest Selection in Ratby of  
BEERS WINES and Spirits

A VAST CHOICE OF CONFECTIONERY &  
SOFT DRINKS

A LARGE VARIETY OF GREETING CARDS,  
WRAPPING PAPER and STATIONERY

NEWSPAPERS and MAGAZINES  
DELIVERED TO YOUR DOOR DAILY

We are Agents for  
SKETCHLEY DRY CLEANING

Video rental and Photocopying  
OPEN Monday-Friday 6.15-1pm. 2.30-10pm  
Saturday 6.15-10pm  
Sunday 7.30-2pm. 7pm-9pm

## RATBY BAND CELEBRATES

The Ratby Co-operative Brass Band organisation is 100 years old this year and we've started celebrating already! In January we launched a Beginner Band-11 youngsters learning to play from scratch, who make a total of 130 people practising once or twice a week at the Band Room.

The Beginner Band will join with the Training, Youth, Mid and Senior Bands on Sunday 11<sup>th</sup> June for the annual **Summer Spectacular** at Braunstone Civic Centre. The concert starts at 6pm, and each band will play individually before a massed band Grand Finale, with all 130 musicians playing together.

On Saturday 12<sup>th</sup> August the Band is staging the **Ratby Crow Pie Carnival**. The parade, with the theme 1906, starts from Markfield Lane at 10.30 a.m. and ends up on Ferndale Drive playing field, where stalls, bouncy castles, teas, and all sorts of entertainment will take place. If you wish to bring along a stall (no food or drinks thanks) please telephone **0116 238 6461**. You will be most welcome. Village groups £6.00, out of village groups £12.

The high point of our 100<sup>th</sup> year is **The Centenary Celebration Concert** at De Montfort Hall on Saturday 16<sup>th</sup> September. This will be a wonderful concert, with all 5 bands, Lots of musicians who learned to play with Ratby Band, plus previous conductors and VIPs have been invited. We'll be playing many old favourites. An event not to be missed!

Tickets for these concerts are available through Malcolm Pounder, on **0116 238 6749**. Or direct from De Montfort Hall for the Centenary Concert in September.

## THE SERVICE GARAGE

MAIN STREET, RATBY  
M.O.T TESTS

CARS (PETROL and DIESEL)

M.O.T. HOURS 9.00-4.15 Monday-Friday

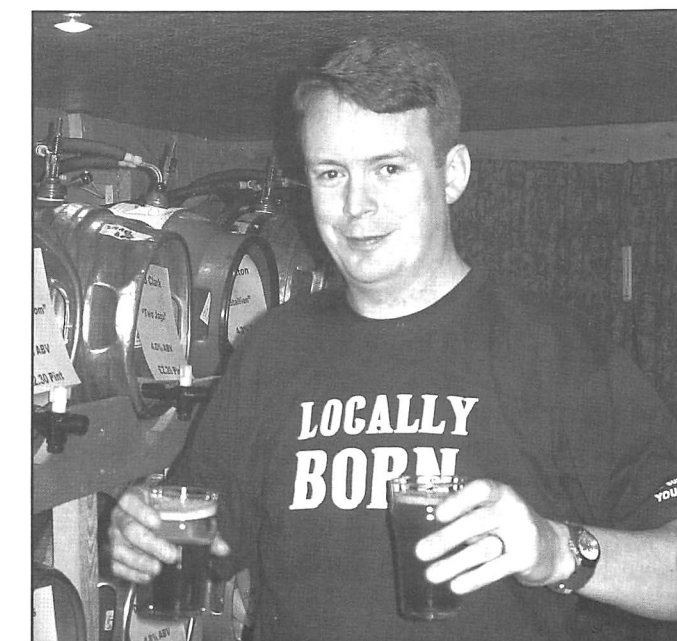
Closed for lunch 1-2

TELEPHONE 239 4966

## LAST OF THE WINTER BEER

The Bull's Head hosted their second Beer Festival on the weekend of March 24<sup>th</sup>. Once again there was a wide range of real ales to sample, including 6 from Everards. There was food on offer all weekend, and entertainment ranging from 'Blue Brass' to Samando Samba Band.

Pictured is landlord Phil behind the Real Ale Bar.





**JULIE'S**  
**HAIRDRESSING**  
MAIN STREET RATBY

Traditional and Modern Styling

Telephone 239 2406

*Learn to Drive at*

**FOWLERS**

 School of Motoring 

All Levels of Tuition From  
**BEGINNER to MOTORWAY LESSONS**  
From Young to Old

Contact: **Pete Fowler** D.O.T. ADI  
**Tel: 0116 238 6165** Mobile: 07760 258700

## RATBY PARISH COUNCIL NEWS

13 STATION ROAD, RATBY

Tel. 0116 239 0167

### M1 Widening

Following limited Public Consultation for this area on the above scheme, Ratby Parish Council are no further forward as to what, if anything, will happen, or how it will affect us. What is certain is that Section 2 of the plan involves Junction 21-21a and will involve the taking of some land. Until the Highways Agency discloses its Preferred Route Option we do not know what this means for Ratby. Ratby Parish has properties adjacent to the North bound side of the motorway on Groby Road, Danehill, and Ferndale Community Park. There are also issues regarding noise, dust and pollution. Works are planned to start in 2010 and completed by 2015.

If you have concerns regarding this matter, please write to the Parish Council and we will endeavour to have them addressed.

### Vandalism on the Parks

Yet again there has been extensive damage to both parks through wanton vandalism, which has resulted in play equipment being damaged beyond repair. Other apparatus has been set on fire.

Ratby Parish Council would like to remind residents that it is **YOU** who has to pay for this equipment to be replaced or repaired on what is now a regular basis. Do you know where your youngsters are, and what they are up to when they go out? If you see anything please call **Crimestoppers** on **0116 222222** and help the Police to help you.

### Youth Bus-Calling All Young People.

PC Annette Dowey is arranging for the Youth Bus, funded by the Parish Council to visit Ratby for one evening a week for five weeks in the near future. The local youth workers and Beat Officers will be on hand to talk to young people of all ages in the village. This will be your opportunity to say what facilities and activities you want. The dates have yet to be confirmed but will be advertised around the village, so **PLEASE** visit the bus and put your ideas across.

E Mail: [ratbypcouncil@btconnect.com](mailto:ratbypcouncil@btconnect.com)

Web Site: [ratbyparishcouncil.org.uk](http://ratbyparishcouncil.org.uk)

### Summer Sports Roadshow

Hinckley and Bosworth Borough Council will be running their sporting activities again this year on Ferndale Community Park, so please look out for posters advertising the date. Leaflets giving some details are usually given to school children towards the end of the summer term.

### Litter

The Glenfield Wildlife Group have collected litter from the Ivanhoe Trail on a regular basis for a number of years, but they are now unable to continue picking litter on the Ratby end of the trail. They are asking if any Ratby residents would like to volunteer their services. Please contact the Parish Office for details.

### Ferndale Community Park

The Parish Council has received confirmation of awards from two of the grant providers for the new play equipment, but they are subject to the decision from the Parish and Community Initiative Fund from Hinckley and Bosworth Borough Council. Unfortunately the final decision will not be taken until mid July and will therefore slightly delay the intended installation date. The Parish Council are now developing ideas and strategies for future phases, and resident's suggestions would be most welcome. Please forward these by email or post to the Parish Office.

Parish Clerk

**MARTIN  
TIBBLES**

**PAINTING &  
DECORATING  
SERVICES**

**22 YEARS EXPERIENCE  
EXCELLENT REFERENCES  
FREE ESTIMATES & ADVICE GIVEN**

For all your home interior &  
exterior redecoration  
requirements by a qualified  
tradesman, contact **Martin on**

**0116 291 0489  
07855 412945**



**RC**

Building  
Insurance Work  
Specialists in In  
Small  
Work Contracts  
Maintenance & Repairs

Telephone

## The Reading MISSION

### ARE YOU READY FOR THE NEXT CHALLENGE?

Once again, your local library is offering the national summer reading challenge when all children between the ages of 4 - 12 are invited to get reading.

This year's challenge is called **The Reading Mission** and it will run from 8<sup>th</sup> July until 9<sup>th</sup> September. It is free and is a wonderful way for children to enjoy reading for pleasure and to use their local library over the long summer holidays, focussing on the exciting world of secret agents, codes and top secret missions.

Every child participating in **The Reading Mission** will receive a free special agent attaché pack, which will explain their mission to crack codes, solve puzzles, to read books and to spread the word about books. As children borrow and read books over the summer they will receive stickers and spy cards. On completing the Mission challenge, having read a minimum of six books, they will receive a special '**mission completed**' certificate and a secret message pen.

In addition, there will be several activities in libraries to complement the Reading Mission and details of these will be available in local libraries or by looking at the website [www.leics.gov.uk/libraries](http://www.leics.gov.uk/libraries)



**Russell Construction LTD**  
— BUILDING SERVICES —

Building Contractors  
Insurance Work  
Specialists in In  
Small  
Work Contracts  
Maintenance & Repairs

Cleaning & Restoration  
All Building Work Undertaken  
Serving: Commerce, Industry & Household  
Free Quotations Provided

Phone Darren on 07745 224900 or James on 07793 642045  
Tel: 01455 846508 Fax: 01455 846515  
7 Stafford Street, Barwell, Leicestershire.

Ratby Libraries Reading Mission will start with a special launch party on Friday 7 July 2006 from 3.30pm-4.30pm. All welcome. Children 5 and under must be accompanied by an adult.

### Keep Wriggling along to Wriggly Readers

Wriggly Readers will continue in June and July at Ratby Library. It is always on the 4<sup>th</sup>

Thursday of the Month at 2pm. In June it is on 22<sup>nd</sup> and in July on 27<sup>th</sup>.

Over the summer to replace Wriggly Readers there will special Summer Stories for the under 7s on Wednesday 9<sup>th</sup> August at 2pm-3pm. This will replace Wriggly Readers for August. Normal play will be resumed in September!

Plus, Library development Worker, Holly will be attending the Ratby Pre-School fete on Saturday 17<sup>th</sup> June to tell some stories – look out for her there!

Tel: 0116 2387194

**BUILD IT WISE**

Mobile 07886130243

**For all your property repairs  
& home improvements**

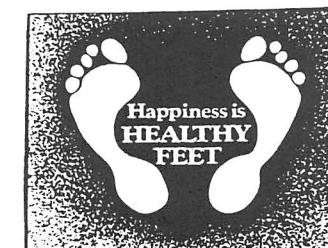
*Fascias & soffits garden walls  
Roofing repairs chimneys re-pointed  
alterations extensions  
brickwork renovations  
paths & driveways landscaping  
fencing repairs gutters cleaned*

*friendly & reliable builder  
with very affordable prices*

**PHONE FOR A FREE QUOTE  
[builditwise@yahoo.co.uk](mailto:builditwise@yahoo.co.uk)**

*Small enough to care – big enough to cope  
20 YEARS EXPERIENCE • NVQ QUALIFIED*

**Peter Comley, MSSCh. MBChA.  
REGISTERED WITH THE HPC  
(Health Professions Council)**



**Visiting Chiropodist  
A Convenient & Professional Home  
Treatment Service – with over 10 years experience  
Tel: 01530 244887**



## RATBY VILLAGE SOCIETY ANTI-LITTER CAMPAIGN

The campaign has got off to a flying start with the help and enthusiasm of students at Brookvale High School. Under the supervision of Mr K Ballard the students are designing posters for us to display around Ratby, to draw attention to the campaign. They have also come up with a number of suggestions for us to try, and we would like to act on as many of these as possible. We will be keeping in regular contact with the school to enable us to keep the younger person's viewpoint in mind.

Grobby Community College are to put an article in their half-term newsletter and will let us know the response from students.

We are also contacting Ratby Primary School, who we feel will be a great asset, as they have, in common with Brookvale, twice won the prestigious ECO Schools Green Flag Award. Included in this scheme are ideas for recycling and reducing litter. Pupils and parents are sure to have practical suggestions for us to work on.

We will keep you informed of Campaign progress through the pages of Wot! Magazine.

Jane Rayne

## RATBY RAMBLERS

Ratby Ramblers were one year old in March and are still going strong. We get good exercise, friendly banter, coffee stops and the occasional pub meal. Our walks are usually three to five miles long, and take place on Thursdays and Fridays every week.

If you are interested in joining please contact Jill Grey on 239 5208 for information.

## MAY I REMEMBER

Brass trumpet daffodils  
heralded the Spring –  
their brazen fanfare silenced now.  
On stage blossoms enchantress May  
adorned with bluebell, sorrel, celandine  
to complement the budding woodland floor.  
All around  
the joyful sound  
of chaffinch, lark and cuckoo  
chorusing, cascading and counterpoint,  
Garish golden oil seed rape  
vies with the sun for pride of place.  
Unruffled water, not to be outdone,  
reflects the smile of azure sky.  
Impatient anglers wait in lazy boat,  
watch coot and grebe  
plunge headlong  
on some poor unsuspecting dace,  
Disdainful swims the supercilious swan  
serene upon its placid way.

Such bounteous beauty  
offers us a glimpse of heaven  
beyond the wit of impotent Man.  
Idyllic day –  
in all but one:  
alas I had no friend to share  
and stand enraptured  
hand in hand.

Hoz  
May 2006.



**ART CLASS**  
**TUESDAYS 1.30-3.30**  
**RATBY VILLAGE HALL**  
*Friendly and Relaxed*  
**Drawing and painting for all abilities.**  
**Ring Julia Kent for details, on**  
**277 0939**

Mobile Phone Top-Up  
Cards now available

**VODAPHONE**  
**CELLNET**  
**T MOBILE**  
**ORANGE**

Going Abroad? Don't  
forget we can offer  
the following

**Travel Insurance**  
**Foreign Currency**  
**E111 Medical Forms**

Remember you can cash  
cheques and make deposits  
for these Banks at your  
local Post Office

**LLOYDS TSB CO-OP**  
**A & L GIROBANK**

**RATBY**  
**POST**  
**OFFICE**  
*Main Street*  
**Ratby**  
**239 3001**

And we also sell stamps!!!

## RATBY COMMUNITY ORCHARD

The Orchard Group are planning the annual summer pond dipping and wildlife watch again. This year it will be held on Wednesday August 2<sup>nd</sup>, around 7.30-8pm, meeting at the Pond. Our experts, Neil Pilcher and Neil Talbot will be on hand to help us identify the creatures we find! We will be listening for bats too. Join us for this fascinating event.


Plans are also being made for an APPLE DAY EVENT at the orchard in October. Look out for more details in the next issue of Wot. The orchard has blossomed well this spring, so we are hoping for a bumper crop!

By the time you read this the Totem Pole should be back in place.

## THE TEXTILE INDUSTRY IN RATBY

Between May and July 2006 there will be a display of photographs and notes on 'The Textile Industry in Ratby,' in Ratby Library. If you have photographs or memories of this industry, please contact Ratby Local History Group on 0116 239 4168.

**YOUR LOCAL ELECTRICIAN**

  
**PAULS QUALITY ELECTRICS**

**Fully Qualified City & Guilds Electrician**  
**Registered with the NICEIC Domestic Installer Scheme**

Upgrading Old Fuse Boxes – Rewires – Alarm Systems  
New Sockets & Lighting – All Domestic & Commercial Electrics

Call Paul Rumble on: (0116) 2872338  
MOBILE: 0798 0911 869 Website: [www.pgelectrics.com](http://www.pgelectrics.com)

## HIS and HERS

**LADIES AND GENTS**  
**HAIR DRESSING**  
**OAPs REDUCED RATES**  
**Appointments not always necessary.**

**156 STATION ROAD, RATBY**  
**239 4429**

## VILLAGE SOCIETY NOTES

Mr. Derek Smethers gave a most interesting and informative talk, at our March meeting, entitled: 'The Post during World War Two.' This was divided into four areas. (War at Home, Keeping in Touch, Special Arrangements and Strangers Here.) These sections included examples of mail delivered to the four corners of the earth, including some by the new Atlantic air mail routes by sea-plane diverted through Lisbon.

Other interesting snippets were mentioned, such as the paper shortage, the re-use of envelopes and the requisitioning of 'Stop-me-and-buy-one' ice-cream trikes, painted Post Office red, for use as delivery vehicles due to petrol rationing. How many of you remember these?

It was a most interesting and nostalgic evening.

On April 18th. we were treated, by Philip Shreeve, to a very colourful slide show entitled 'Contrasts of New England'. This was a record of his holiday there, only a few weeks after the Twin Towers disaster in 2001. Despite frequent security checks and some limits on access they obviously had a very interesting time. 'The Fall' in this area is always a picture and we saw some beautiful examples of the changing trees from a skilled photographer who still prefers a manual camera!

Historical associations were explained in an interesting commentary, including Native American life on Cape Cod, the Pilgrim Fathers plantation and historic Boston. Nantucket, with its cobblestone streets and clapboard houses appeared picturesque and preparations for the coming snowy winter in Vermont were obviously well in hand. Music to suit the different slides backed the commentary very well.

**The next two meetings are as follows and new members are always welcome.**  
Tuesday 16th. May - 'Working with the National Trust'.  
Tuesday 20th. June - Old-fashioned Remedies'.

## 1960s RATBY

We have been informed that the shed visible in the 1960s picture featured in our last issue is still standing!

## NEWS FROM ST PHILIP AND ST JAMES.

It seems a long time ago now, but it was great to see so many people around the church over the Easter Weekend. Good Friday was a hectic day with loads of children doing all sorts of activities, sharing lunch and then joining together in a short act of worship to remember the importance of the day. Decked in flowers, the church looked lovely as we celebrated Easter Day and the fantastic news that we worship a risen saviour. It really was a special weekend. Our last all age service at the beginning of May proved to be interesting. Part of our thinking was about communication – when it works and when it doesn't. The more 'mature' members spoke of talking, letters and telephone whereas our younger contingent used text, MSM and sign language. No doubt a sign of the times! Next month, on the first Sunday in June, we celebrate with our friends at the Methodist church as we recall the 'birthday' of the Christian church. I wonder if there will be a cake big enough to hold a couple of thousand candles?



## Summer Fayre

Ratby Pre-school will be holding their Summer Fayre on Saturday 17th June at the Church Rooms, starting at 12 noon until 3 p.m. **Filbert Fox** will be on hand to start the Balloon Race. Attractions include bouncy castles, hog roast, face painting, pet's corner, Tombola, Tots Toddle and much, much more...Please come and join in the fun and support your village Pre-school...they need you!

### **A. GOODWIN** **CARPENTRY, JOINERY &** **PROPERTY REPAIRS** *Fitted Kitchens,,Bedrooms,* *Bathrooms*

\*\*\*\*\*

**UPVC Windows, Doors, Porches.**  
**Fascias & Soffits**  
**Laminate Floors**  
**NO JOB TOO SMALL**  
**Telephone 238 7361**  
**Mobile 0777 987 2211**

## **Porter's Discount Carpets**

**121/3 STATION ROAD, RATBY**

**TELEPHONE 239 3238 or 239 5202. MOBILE 07860 551142**

**QUALITY AT THE  
RIGHT PRICE**



**Laminated Flooring**

**FREE FITTING  
ON ALL CARPETS  
EXCEPT REMNANTS**



**GEORGIAN  
CARPETS**



*ask for it by name!*

## **RATBY NEIGHBOURHOOD WATCH**

### **PLEASE BE AWARE**

A number of people in the area have recently received a telephone message or a card through their letterbox from P.D.S. (Parcel Delivery Service) advising them that they have a parcel they must collect. Residents are given a number to ring for more details. This is a 'scam.' You can easily add a large amount of money, perhaps around £15 to your phone bill when you ring these numbers. The police are aware of this.

If you are asked to call a number for an unexpected delivery, think twice before responding. If in doubt contact our local PC 4344 Annette Dowey on **0116 248 5675**, or R.N.W. on **239 4450 or 239 5001**.

### **Thefts from Vehicles**

There has been an increase in the number of thefts from vehicles in the area, where Satellite Navigation Systems have been targeted. Where possible these should be removed from vehicles when left unattended, or stored out of view.

Record the serial number of the unit and use an ultra-violet pen to mark the item with your post code and house number to verify ownership.



**WATCH  
BATTERIES  
& STRAPS**

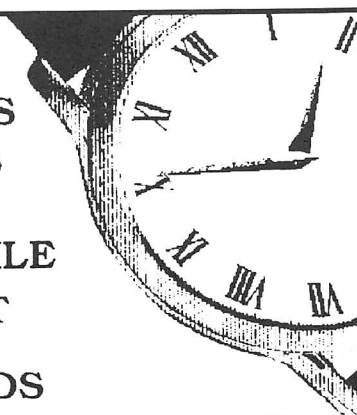
**FITTED WHILE  
YOU WAIT**

**ALL BRANDS**

**SYKES JEWELLERS**

**8 Bradgate Road, Anstey  
Tel: 0116 236 2510**

**www.sykesjewellers.co.uk**



## **THANK YOU**

Ratby Scout Group would like to thank Ratby Methodist Church for their recent donation towards the production of the Wot magazine. Your gesture is very much appreciated.

Thank you also for your kind words of appreciation for 'Wot'!



**GOLDEN  
CHARTER**  
Pre-paid  
Funeral Plans

## **Anstey & District Funeral Services**

### **J.G.Wright**

A privately owned firm  
offering 24-hour personal and dignified service.  
Day & Night  
Private Chapels of Rest  
**Hearse, Cars and Flowers Supplied**  
**Funerals Completely Furnished**

58 Bradgate Road, Anstey  
Leicester LE7 7AA

**Telephone: 0116 234 0548**

### **QUIZ IN LAST ISSUE**

An apology for inadvertently printing the answers next to the quiz, a mistake arising following a hasty increase in pages to accommodate the copy received!

**DEADLINE  
AUG/SEPT ISSUE  
No 119  
FRIDAY 14th JULY**

Editor 239 3367

Adverts 239 3279

Articles may be sent to 3 Ingle Drive LE6 0NN  
Phone 239 4873 /sueboud@hotmail.com