



WOT!

About Ratby

PUBLISHED BY RATBY SCOUT GROUP

TOASTING THE TREES

RATBY COMMUNITY ORCHARD GROUP

It seems to be becoming an annual event! Once again on the traditional date, the Saturday following Epiphany or Twelfth Night, members of the group met in The Railway Inn before processing noisily with songs and music (thanks to Jason Pegg for providing the Saxophone lead) to 'Wassail' or wish good health to the Orchard fruit trees.

The time-honoured ritual was observed, with a circle 'Wassail song' around the trees, and the passing around of the traditional Wassail bowl for sips of the mulled cider.

Cider was poured on the tree roots, and then the ladies present hung toast in the branches, a practice which is said to bring robins into the orchard, and with them good luck. The men let off party poppers to represent the traditional shot-gun blasts which were intended to ward off evil spirits. This was followed by roast chestnuts and potatoes around the warmth of a 'wheelbarrow' barbecue.

Whilst today we are not following this as a 'pagan' ritual, we enjoy the Wassail because it is an opportunity to get together with a group of people and enjoy some singing and merriment to brighten the dark winter days.

CHORAL CONCERT

Bradgate Lions are presenting this concert in Ratby Church on 25th February. Tickets are £6.00. Ring Roger on 01530 242 912. Proceeds shared between Ratby Church and LOROS.

We would like to thank Ratby residents who supported with donations the 'Santa Float' on 4th Dec.



An Orchard Group member 'toasts' one of the apple trees

CHARLIE or SCROOGE?
RATBY PRIMARY SCHOOL 1976-88

Were you a Teacher, Pupil, Dinner Lady, Parent Helper or anyone else connected with the School at this time?.....Do you remember any of the end of term production shows that were put on: CHRISTMAS CAROL, URASHIMA..CHARLIE AND THE CHOCOLATE FACTORY ..WINTER WIZARDRY....7 VOYAGES OF SINBAD etc ..Were you in any of them?.....Have you any photos or particular recollections of them (good or bad!)....If so, I'd love to hear from you...give me a ring (no singing needed!)...Possible re-union, if enough interest, to find out what everyone's been up to since then!!

John Cavendish

Phone me on 01455 282504

SALE

Now On



PIONEER PURE Vision Plasma TV

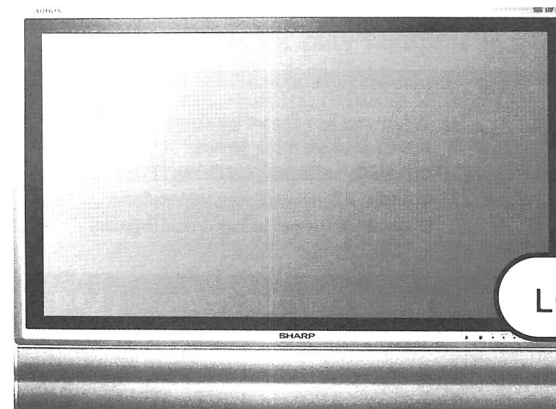
Benefits from the most superb picture quality available - this Plasma TV is 'HD ready' View darker picture areas with enhanced contrast, thanks to Pioneer's unique PUREBLACK Crystal layer Pure and clean, ultra-thin (9.2cm) design Wall-mount your Plasma TV with the handy mounting bracket, or choose a table top stand or floor stand Opt for side-mounted speakers or for under mounted* speakers

PDP-506XDE £3299.99

PDP-436XDE £2499.99



HD
ready



SHARP LC-32P50E

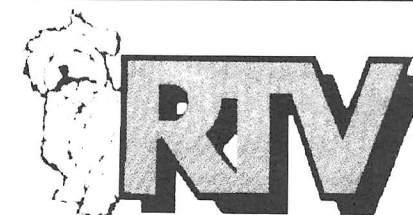
30" visible screen diagonal widescreen format 1,366 (horizontal) x 768 (vertical) pixels x RGB Advanced Super View & Black TFT (low reflection) Quick Shoot Technology and improved signal processing for high speed moving images High brightness of 450 cd/m² contrast ratio of 800:1 Optical picture control for adjustment to the prevailing light conditions (OPC) NICAM/A2 stereo decoder with Virtual Dolby Surround

LC32P50E **NOW £899.99**

We are an independent retailer - with friendly local service and personal attention - but we're also members of **EURONICS** - Europe's biggest independent electrical buying group, which means we can offer you the very best deals on the highest quality brand names!



- Low Prices
- Top Brands
- Special Offers
- Local Delivery
- After Sales Service
- Helpful Staff
- Expert Advice



23-27 Station Road, Ratby,
Leicestershire LE6 0JQ
Tel:0116 2394544

EURONICS CENTRES

Making your money go further!

A SPECIAL DAY 1987-

I wonder if anyone remembers Claire Mangham being 'Bride of the Week' in 1987? I doubt it! I mention this because Claire and her family, husband Robert, son and two daughters have been home for Christmas, the first visit since their wedding. On 23rd December they had a special service at Ratby Church to renew their wedding vows along with Claire's parents, Jo and Keith. Radio Leicester interviewed the couple at 7.30 a.m. before the service.

The vicar said this was the first time he'd officiated at such an unusual occasion. He made it even more memorable for the two couples by presenting them with individual wedding certificates that he'd made for them to sign. The dry, cold day was a contrast to their actual wedding day when there was heavy snow, enabling them to enjoy a snowball fight after the reception.

Afterwards there was a 'get together' where we toasted the two couples.

A Happy New Year to all. I reported in 'Wot' previously, as 'Rent a Mum', so will do again!

GOING FOR GOLD!

Congratulations to Master Hay and Master Dee Harris for doing an excellent job at the inter-club Tae Kwon-Do tournament in Rugby on Saturday 19th November. All of the students from Ratby Tae Kwon-Do club fought well showing great courage and indomitable spirit, which made Mr Harris very proud to be their teacher.

Even though this was their first tournament they were able to achieve outstanding results especially well done to Mitch Baines for winning a silver medal. This was due to their good technique, strong spirit, Mr Dee Harris's excellent coaching skills, as well as the great support given by their fellow members and parents who came to cheer them on.

Tae Kwon-Do Club meet in Ratby's Village Hall on

Monday 4.30 pm - 5.30 pm (Children)

Tuesday 8.00 - 9.00 pm (Adults & Juniors)

For information call 07752 337978



AN ENVIRONMENTALIST'S DREAM OF HOME (with apologies to Irving Berlin)

I'm dreaming of a bright Ratby
just like it was so long ago
when there was no litter
no cans of bitter,
no fast food scraps for folks to throw.
I'm scheming for a right clean up
with every protest poem I write
May our streets be cheery and light
and may all the junk be out of sight.

Hoz

Inadvertently missed from the Christmas issue, but not too late for getting us thinking!



RATBY PHARMACY

58 MAIN STREET

LE6 0LL

Tel. (0116) 239 3139

**DISPENSING, FAMILY HEALTH CARE
and ADVICE, PHOTOGRAPHIC DEV.**

OPEN ; Mon.-Fri. 9am -1pm, 2pm-6pm

Saturdays 9am-12.30pm

**COLLECTION of PRESCRIPTIONS from
L.F.E. RATBY GROBY GLENFIELD SURGERIES**

PABARI'S RATBY NEWS

5 STATION ROAD RATBY

0116 239 3287

**For the Largest Selection in Ratby of
BEERS WINES and Spirits**

**A VAST CHOICE OF CONFECTIONERY &
SOFT DRINKS**

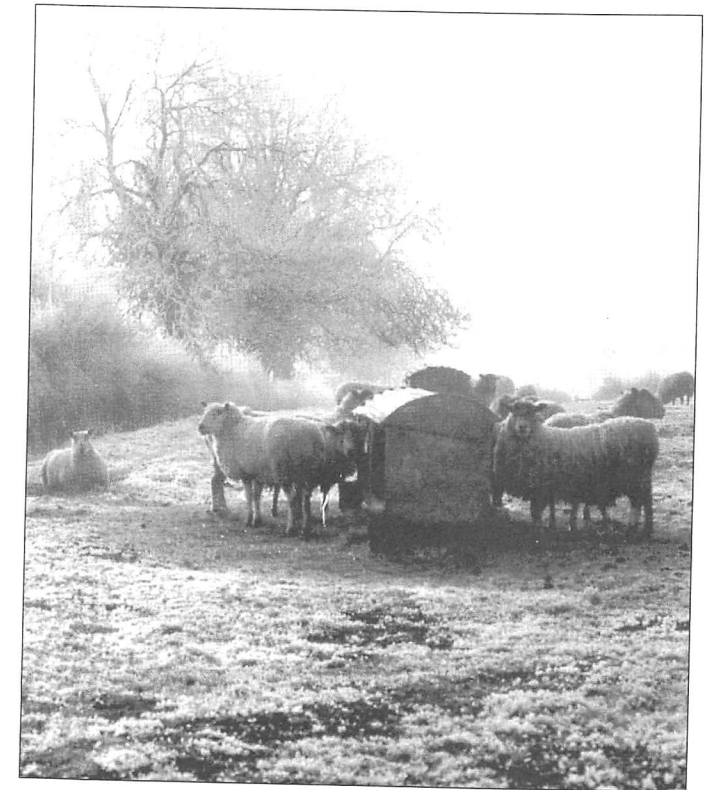
**A LARGE VARIETY OF GREETING CARDS,
WRAPPING PAPER and STATIONERY**

**NEWSPAPERS and MAGAZINES
DELIVERED TO YOUR DOOR DAILY**

**We are Agents for
SKETCHLEY DRY CLEANING**

**Video rental and Photocopying
OPEN Monday-Friday 6.15-1pm. 2.30-10pm
Saturday 9.15-12pm**

EARTH STOOD HARD AS IRON, WATER LIKE A STONE.



**A Wintry Scene in Ratby,
Photo. by Hoz Gamble**

At the time of going to press we've not had the severe winter that was forecast. Do you have memories of HARD WINTERS in Ratby's earlier days? We'd love to hear from you.

ART CLASS

Drawing and painting for all abilities

TUESDAYS 1.30-3.30

RATBY VILLAGE HALL

Friendly and Relaxed

Join any Time

Julia Kent 277 0939

The Bull's Head

Next Beer Festival

March 24th to 26th - "Last of the Winter Beer"

20 or so real ales, real cider, real perry, great food & live music all weekend.

NEW! Every Tuesday Night 5-8pm... Only £3.95
8oz Rump Steak, Tomato, Mushrooms, Onion Rings & Chips

Coming Soon:

Monthly Gourmet Club, Quiz Nights, Karaoke,
Curry/Chilli/Italian/Spanish/Greek Nights and more...

Give us a call, drop in, or see the web site (updated at last) for more details

www.bullsheadratby.com

23 Main St, Ratby, LE6 0LN
0116 2393256

HIS and HERS

**LADIES AND GENTS
HAIR DRESSING**

OAPs REDUCED RATES

Appointments not always necessary.

156 STATION ROAD, RATBY

29 Groby Road
Ratby

Dear Wot,
It is with great sadness that I have to tell you of the death of Louie Jones, better known to 'Wot' readers as 'Scrivener'.
She passed away in hospital on November 29th, eleven days after her 90th birthday.
Louie was not a native of Ratby. She was born and brought up in Coventry. She spent the majority of her married life in Birmingham, where, in the late 60s she trained as a cookery teacher. When her husband retired they moved to Somerset, and it was here that her involvement with the W.I. began. On the death of her husband she came to live in Ratby to be near to her only grandchild.
Louie baked for the Glenfield W.I. market well into her 80s.

I know she enjoyed searching out suitable recipes for 'Wot' and I hope 'Wot' readers had as much pleasure trying them out.
She will be sorely missed by her family and friends, but I am sure she is having fun trying out new heavenly recipes!

André (Andy) Morgan.

All of us at 'Wot' are sorry to hear the sad news. We shall miss the recipes very much. I for one have tried out and saved many of them, and especially loved her puddings.
Our deepest sympathy to you and your family. Editor

WATCH
BATTERIES
& STRAPS

FITTED WHILE
YOU WAIT

ALL BRANDS

SYKES JEWELLERS

8 Bradgate Road, Anstey
Tel: 0116 236 2510

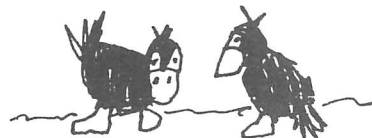
www.clockandwatchrepairs.co.uk

RATBY PRIMARY SCHOOL

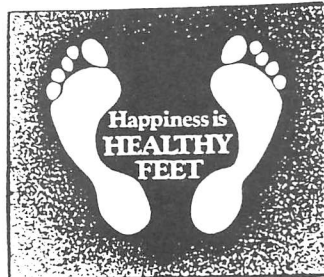
After our recent Ofsted Inspection, the Inspection report is now available to read on the Ofsted Website- www.ofsted.gov.uk
If you are unable to access this but would like a copy of the report, please come into the school and one will be made available to you.

If you have children of school age or below and are interested in visiting the school, please feel free to telephone us on 0116 239 3610 to make an appointment.

Mrs A Husband
Headteacher



Peter Comley, MSSCh. MBChA.
REGISTERED WITH THE HPC
(Health Professions Council)



Visiting Chiropodist
A Convenient & Professional Home
Treatment Service - with over 10 years experience
Tel: 01530 244887

Bradgate Home Furnishings

9a Leicester Road Tel 0116 2366803

Mattresses
Pine & Metal
Beds
Mexican Pine
Select A Bed
Today
Sleep On It Tonight
Bunks
Wardrobes
Shop At Home Service
Stock Items
Delivered Within
48 HRS
Divans

Chests
Dining Suites
WE DO MORE
Occasional Furniture

The Nook Anstey
Ample Free
Parking

Our Furniture Comes Fully Assembled
Except Beds & Wardrobes



YOUR LOCAL ELECTRICIAN



Fully Qualified City & Guilds Electrician
Registered with the NICEIC Domestic Installer Scheme

Upgrading Old Fuse Boxes - Rewires - Alarm Systems
New Sockets & Lighting - All Domestic & Commercial Electrics

Call Paul Rumble on: (0116) 2872338
MOBILE: 0798 0911 869 Website: www.pqelectrics.com

MADE YOUR WILL YET?

"I can come to your home at a time
to suit you and give professional,
friendly advice on 'Wills' Trusts and
Estate Management."

Our Standard Will £19.95 + vat

Also

Power of Attorney: Property Trusts:
Will Storage: Inheritance Tax Wills
Funeral Plans: Children's Trusts.

Telephone Mrs Chris Thomas
For an appointment or brochure
01509 502264

In Home Legal Services
Member of the Society of Will Writers

Ratby Village Society

Although the Village Society does not hold a meeting in December, activities in November had made up for the deficiency. At the regular monthly meeting members enjoyed a social evening which included a 'faith supper,' a quite unusual form of quiz devised by Betty Hulme, a short brainstorming session led by Andy Cereseto on suggestions towards the 'Cleaner Ratby Campaign,' and finally, Derry Hurd on keyboard, accompanied by some hearty singing of traditional favourites.

During the month a group of members planted some 500 daffodil bulbs, supplied by the Parish Council, on various grass areas, to beautify the village in spring. We also supported the Christmas Tree Festival in the Parish Church with our controversially decorated entry entitled 'Contrasts,' highlighting the anti-litter campaign and asking for suggestions on how best to get the message across. There was a good response, and an ongoing programme of tackling the problem should begin to take shape over the coming months.

Porter's Discount Carpets

121/3 STATION ROAD, RATBY

TELEPHONE 239 3238 or 239 5202. MOBILE 07860 551142

QUALITY AT THE
RIGHT PRICE



Laminated Flooring

FREE FITTING
ON ALL CARPETS
EXCEPT REMNANTS



ask for it by name!



GEORGIAN
CARPETS



MRS SUE NEILSON

A 'Wot' reader has informed us of the sad news that Mrs Sue Neilson has passed away on Saturday January 14th.

She will be remembered for her contribution to Ratby village life through involvement in the Parish Council and her voluntary work with the Evergreens.

Deepest sympathy to Sue's husband and family. Editor.

LETTERS TO THE EDITOR

We welcome letters and articles, but reserve the right to edit them.

Your name and address must be supplied, but you may ask for them to be withheld.

MARTIN TIBBLES

PAINTING &
DECORATING
SERVICES



22 YEARS EXPERIENCE
EXCELLENT REFERENCES
FREE ESTIMATES & ADVICE GIVEN

For all your home interior & exterior redecoration requirements by a qualified tradesman, contact Martin on

0116 291 0489
07855 412945



KITCHENS • BATHROOMS • DOMESTIC • CONTRACT
ALL BUILDING WORK UNDERTAKEN

Contact Rob
Mobile: 07843 308654
07843 308675
Fax: 0116 2392 078

RATBY LOCAL HISTORY GROUP

Our January Meeting – At the time of writing, this is due to take place on January 27th. Richard Buckley is presenting a talk about "Recent Excavations in Leicester". After the interval, Neil Glenister will reveal the latest Heritage Finds in Ratby.

Our Next Meeting – This will be on March 31st in the Ratby Village Hall at 7.30pm. We will be hearing all about the History of the Hinckley Hosiery Industry through a talk by Rhiannydd Murray. This will be followed by a short talk about Ratby's own Hosiery Industry.

June Outing – We have organised a day out by coach from Ratby on Saturday June 17th.

This will include a visit to Nassington Prebendal Manor, a guided tour of the house and gardens are included. There will then be a short stopover at Fotheringay Church, followed by short journey to Oundle arriving in time for lunch and the afternoon. There is an optional guided tour of the town at 2.00pm for those who want to take part.

The inclusive cost for the coach and house tour is £15.00. The optional guided tour of Oundle will cost £2.00.

A few places are available on the coach, if you are interested please telephone 0116 2394472



JULIE'S HAIRDRESSING

MAIN STREET RATBY

Traditional and Modern Styling

Telephone 239 2406

DEADLINE
APRIL/MAY
ISSUE No 117
FRIDAY
10th MARCH

Editor 239 3367
Adverts 239 3279

Articles may be sent to
3 Ingle Drived
Phone 239 4873

sueboud@hotmail.com

RC Russell Construction LTD

BUILDING SERVICES

Building Contractors
Specialists in Insurance Work
Smallwork Contracts
Maintenance & Repairs

Cleaning & Restoration
All Building Work Undertaken
Serving: Commerce, Industry & Household
Free Quotations Provided

Telephone Darren on 07745 224900 or James on 07793 642045
Tel: 01455 846508 Fax: 01455 846515
7 Stafford Street, Barwell, Leicestershire.

ARTHUR STEVENSON 1920-2005

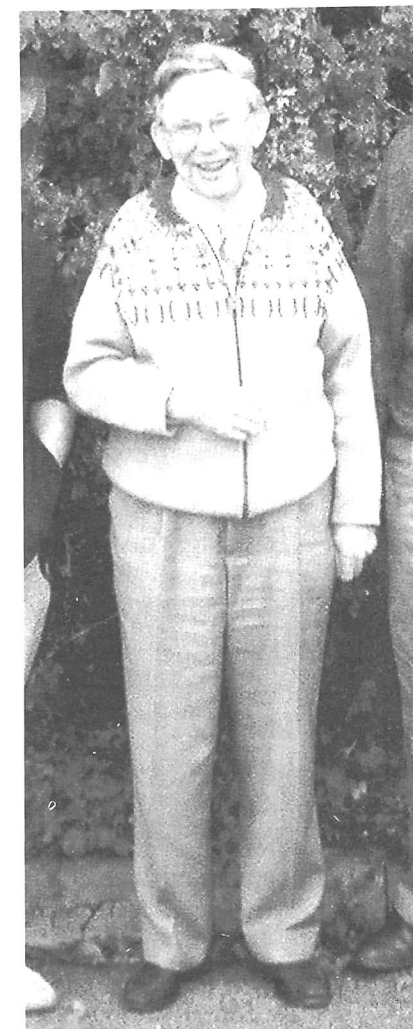
It is with a great sense of loss that we report the death of Graham 'Arthur' Stevenson on 20th December 2005, at the age of 85 years. Arthur was a founder committee member of the Ratby Local History Group and made a considerable contribution to its work in all too short a time. He was born and lived most of his life at 7 Station Road, Ratby. He attended Ratby School before going to Wyggeston Boys School. Old Ratbyans will remember him as the local 'Yo-Yo' Champion, racing around on the new bike he had won as runner-up in the Leicester Mercury Grand Final at De Montfort Hall. He graduated in Geography from Westminster College/Kings College, London.

On returning to Ratby he started work as a teacher of Geography at Gateway Boy's School in Leicester, and was soon appointed Head of Department.

Arthur had great creative skills. He was an organist, expert wood carver, cartoonist, artist and writer. Some of his vivid landscape sketches of Ratby in the 1920/30s were published in Volume 1 of 'The History of Ratby' in 2004.

His boyhood recollections of life in 1920s Ratby further enriched that volume and will form a valuable part of future publications. He will be greatly missed by the Local History Group. We extend our deepest sympathy to his wife Joan, his children and grandchildren.

Wot Editorial team would also like to extend our condolences to Arthur's family. Thank you to The Local History Group for sending in this obituary, and sharing with us the wonderful sketch by Arthur.



Arthur Stevenson in 2001

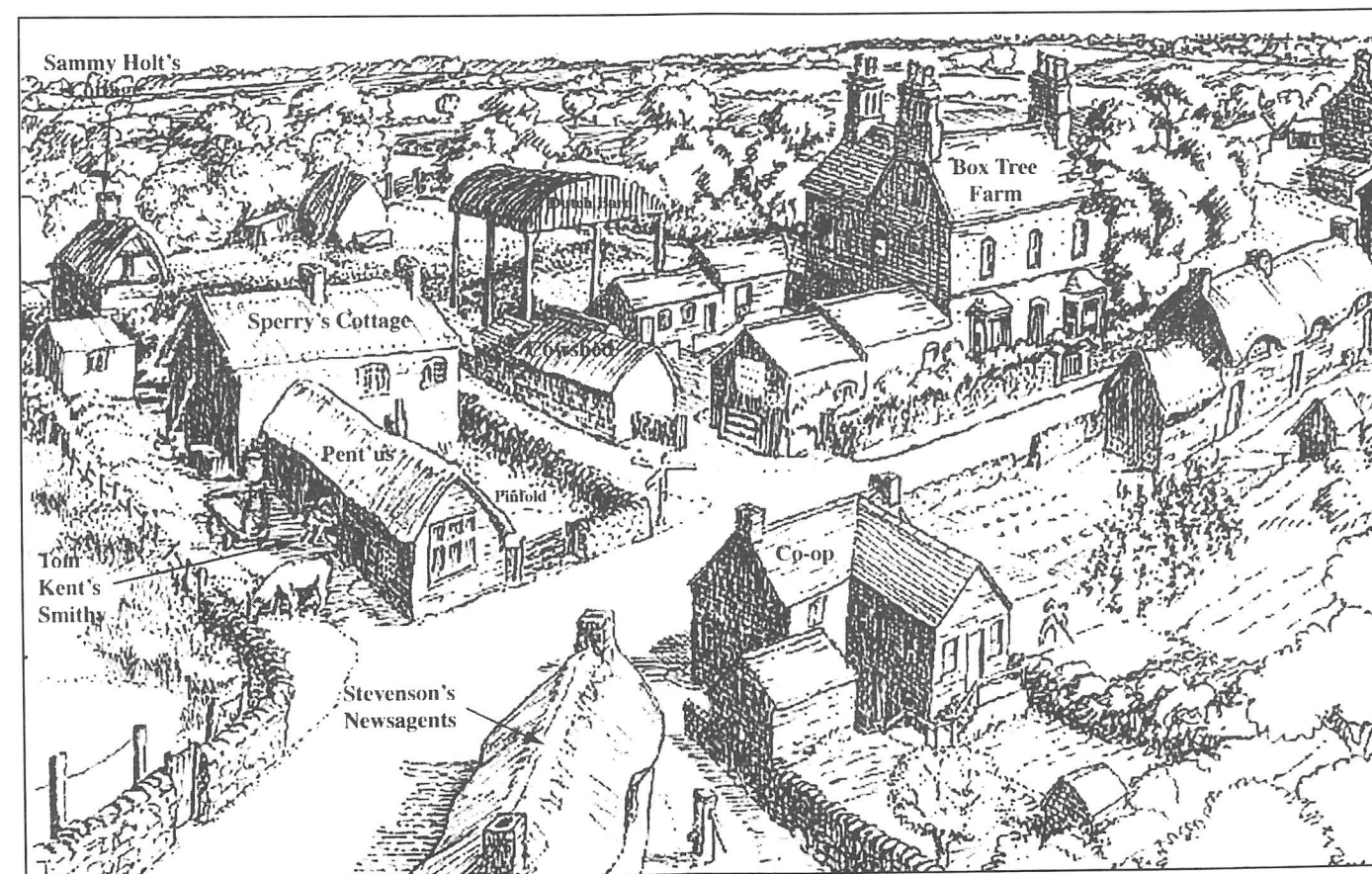


Figure 1: Landscape Sketch of Desford Lane Corner in 1930, drawn as remembered by Arthur Stevenson. (Source: "The History of Ratby: Volume 1" publ. by Ratby Local History Group, p.2)

Ratby Parish Council Precept 2006/07

The Council's estimated budget for the year commencing 1 April 2006 amounts to £98,223.00. However, by using reserves the Council have managed to reduce the requested precept to £84,000. This budget will allow the Parish Council to provide improved facilities in the village. The estimated expenditure is as follows:

Category: Council & Office Expenditure

	Budgeted amount
Salaries	£20797
Rates	£497
Utilities - gas/electric/telephone	£1487
Admin/Audit Office	£2230
Room Hire - meetings etc.	£300
Subscriptions - advisory bodies etc.	£600
Training/Travel expenses	£350
Chairman's allowance - ceremonies/refreshments	£150
Christmas expenses	£120
Donations	£650
Publicity	£300
Insurance	£2800
Loan	£11992
Skip Hire	£360
Dog waste service	£2500
Repairs & development	£750

Category: Recreations Areas & Environment

General maintenance	£2000
Rent for Burroughs Rd - play area field	£300
Play equipment maintenance	£2000
New Play equipment	£15000
Ground maintenance	£16870
Seats, boards, signs, litter bins	£1000
'Ravishing Ratby' - flower boxes, baskets etc	£850

Category: Village Support

Village cemetery	£2500
War memorial repairs	£500
Bus shelter repairs	£500
Parish Plan	£420
Community Orchard	£100
Neighbourhood Watch	£100
Pride Alarms	£ 50
Youth Projects	£5000
Allotments	£2000
Competitions	£150
Category: Contingency emergency repairs etc.	£3000

Mobile Phone Top-Up
Cards now available

VODAPHONE
CELLNET
T MOBILE
ORANGE

Going Abroad? Don't
forget we can offer
the following

Travel Insurance
Foreign Currency
E111 Medical Forms

Remember you can cash
cheques and make deposits
for these Banks at your
local Post Office

LLOYDS TSB CO-OP
A & L GIROBANK

RATBY
POST
OFFICE
Main Street
Ratby
239 3001

And we also sell stamps!!!

RATBY PARISH COUNCIL

VANDALISM

Unfortunately the New Year was accompanied by a spate of vandalism, including two smashed telephone kiosks, and damage to the lovely oak Parish Notice Board on Markfield Road, which was left lying on the grass. Please contact PC Dowey if you have any information. (see below)

KEYS

A set of keys was found on Ferndale Park at the beginning of December; please contact the Parish Office for information. 239 0167

G Aldwinckle

Parish Council Clerk

LEICESTERSHIRE CONSTABULARY

May I take this opportunity to wish you all a belated 'Happy New Year' and hope you all had an enjoyable Christmas. It's back to business as usual for most of us including the odd one or two individuals who thought it would be a good laugh to steal the village Christmas tree lights. A recent survey conducted in the village highlighted the public's concern in relation to Anti Social Behaviour. It's these people that I will be focussing on in this coming year. To assist me with this task I need the help and support of the village in identifying these offenders and not only that, being willing to provide me with statements. I would urge anyone with any information to contact me via my voice mail or to contact 0116 222 22 22.

I recently held a number of surgeries at the Library in the village and I was disappointed that they were poorly attended. Please keep a look out for posters in the village advertising these events. This is your opportunity to meet me and discuss any concerns which you may have and is an important part of police and community consultation. I look forward to meeting you in the future.

Yours Sincerely

Pc 4344 Annette Dowey.

Voice Mail: 0116 2485675.

LISA'S IRONING SERVICE

A FAST, FRIENDLY, RELIABLE SERVICE
PICKED UP AND DELIVERED FREE

Small basket £10

Medium basket £15

Large basket £20

PHONE LISA on 239 4420 or 07733 105374

RATBY METHODIST CHURCH

Our rather belated New Year Wishes are sent to every member of our community. We would particularly wish a successful new year to the many organisations and establishments within our village who cater for our varying interests and age groups. In their turn they provide support and meet our needs, whether for information, sport, pleasure and entertainment, education, refreshment, companionship or spiritual well-being. May the good will within each one, extend to us all. God Bless

Activities continue as normal;

- Sunday Services 10 a.m. and 6 p.m.
- Coffee Mornings on Saturday 11th and 25th February and March.
- Coffee Morning/Jumble sale February 25th 10-12 a.m.

For web-surfers, may we bring to your notice two recently launched Methodist websites.

www.methodistchildren.org.uk

is dedicated to children 0-12 years and gives them the chance to share their own views on topics which they themselves find important.

www.leicesterwestcircuit.visit.ws

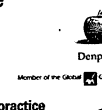
which is intended eventually to refer to local affairs of 12 Methodist Churches, including our

merrident
dental



Time to refresh your smile

- Award Winning state of the art practice
- Accepting NEW patients (no waiting list)
- Tooth Whitening and Cosmetic Dentistry
- Same day emergency service
- Anxious patients warmly welcomed
- Please phone for practice brochure



434a Narborough Road
Leicester LE3 2FS

Lina Patel BDS (Birm)

Shrikesh Kotecha BDS (London)

Tel: 0116 289 1317

FERNDALE COMMUNITY PARK GROUP.


Can I, through the pages of WOT!, explain away some common misconceptions about the Ferndale Community Park Group.

1. We are a **voluntary** group who, under instructions from Ratby Parish Council, set about redesigning Ferndale Park. Equipment was selected by the children and adults who attended the 2004 Crow Pie Carnival. This was then incorporated into the overall plan. We then submitted the recommendations to full Council who accepted the plans and the costings.
2. Because the Council, under governmental legislation, can't fund raise, we reorganised and constituted ourselves into a fund raising and action group for the benefit of the park and the people of Ratby.
3. We make continued recommendations to the Council regarding equipment levels and installations and defend any changes the Council wish to make, for the benefit of the park. However, **we are not responsible** for the current lack of play equipment in the park. **Neither are we responsible for future installations.** This situation lies at the feet of the Council and only they can release funds for play equipment.

The reason we are raising money is to **help** purchase equipment. This will help the Council to release further capital to enable the Park to be completed quicker.

You, the people of Ratby, must lobby the Council, constantly, to see this project to a fast conclusion. There is only so much we can do as a group. Write to the Council, phone the Council, get to the Council Office and demand that the park be completed **now**, not next year but **NOW**.

Thank you for your continued support for our efforts. We hope that our future events will be supported just as well as our past ones.



**OAKLANDS
RIDING SCHOOL**

WE CATER FOR EVERYONE FROM
THE NOVICE TO EXPERIENCED RIDER

All weather riding area
Ring Julie on 238 7570



RATBY PRE-SCHOOL SPACES!!!

Ratby Pre-School have recently contacted parents from their waiting list and in several cases the telephone number has changed or they have in fact moved.

If you haven't heard about your child starting Pre-School & they are coming up for 3 years old, within May, June or July 06 please contact us on 0116-2388126 to organise your free introduction morning and see what fun we have.

Learn to Drive at

FOWLERS

 School of Motoring 

All Levels of Tuition From
BEGINNER to MOTORWAY LESSONS
From Young to Old

Contact: Pete Fowler D.O.T. ADI
Tel: 0116 238 6165 Mobile: 07760 258700

A. GOODWIN

CARPENTRY, JOINERY & PROPERTY REPAIRS

*Fitted Kitchens,,Bedrooms,
Bathrooms*

UPVC Windows, Doors, Porches.
Fascias & Soffits
Laminate Floors

NO JOB TOO SMALL
Telephone 238 7361
Mobile 0777 987 2211

A.H. COLEY

Plumbing and Heating Repairs


New Installations, Bathrooms, Showers

For a full range of Services contact;
4 Saxons Rise
RATBY LE6 0NF
Telephone 239 4277


NEWS FROM ST PHILIP AND ST JAMES

I was going to say that we had some wonderful celebrations at St PJ's during December – but then a lot of you know that already! It was great to see so many people at our special services. The church was almost full for the Carol Service, where the theme was 'People of the Christmas Story', and Midnight Mass. The afternoon crib service seems to attract more people each year and is a lovely time for families and friends to be together. Now you've just started using your new diaries, why not make a note for this December not to miss out on the festivities. On New Year's Day we awarded ourselves a 'lie in' and celebrated the start of 2006 with an afternoon service of dedication which was well attended. We had not tried this before and so it was good to see so many come along. As things are now back to normal, we do hope to see you at church for our usual services which are not always 'normal'!

DIARY DATE
Tuesday 14th February 11 a.m. -12
VALENTINE CRAFTS in the Library
For under 11s



SAFETY
INDEPENDENT
FUNERAL DIRECTORS



**GOLDEN
CHARTER**

Pre-paid
Funeral Plans

Anstey & District Funeral Services

J.G. Wright

A privately owned firm
offering 24-hour personal and dignified service.
Day & Night
Private Chapels of Rest
Hearse, Cars and Flowers Supplied
Funerals Completely Furnished

58 Bradgate Road, Anstey
Leicester LE7 7AA
Telephone: 0116 234 0548

RATBY LIBRARY NEWS

We hope that you are still enjoying your new library in Ratby. Myself and all the other staff are really enjoying seeing lots of familiar faces and also some new faces popping in to have a look at how the library has changed. This was no more the case than on Saturday 3rd December when we had our launch day. It was a wonderful day and the library was filled to the brim for the official ribbon and cake cutting which was fantastic. It is nearly five months since the new library opened and in that time there have been a variety of activities for children and regular story times for the under 5s. There are more to come in the next few months – check out the diary below for details.

There have also been special computer tasters for adults and lots of people have requested individual internet tasters. Please continue to do so and watch out for forthcoming IT tasters.

Thank you for your continued support and a Happy New Year from everyone at Ratby Library

Holly Porter
Library Development Worker

**GAS
APPLIANCE
SERVICES**



- Appliance Servicing and Installation
- Breakdown and Repair Services
- Plumbing and Heating Installation
- Kitchen & Bathroom Design and Installation
- Quality Guaranteed by Experienced Engineers

**YOUR DOMESTIC GAS
BOILER SERVICED**

6 SAXONS RISE, RATBY, LEICS. LE6 0NF
Tel: 0116 2393662

THE SERVICE GARAGE

MAIN STREET, RATBY

M.O.T TESTS

CARS (PETROL and DIESEL)

And

MOTORCYCLES

M.O.T. HOURS 9.00-4.15 Monday-Friday

Closed for lunch 1-2

TELEPHONE 239 4966