



# WOT!

## About Ratby

PUBLISHED BY RATBY SCOUT GROUP



### HERE WE COME A WASSAILING



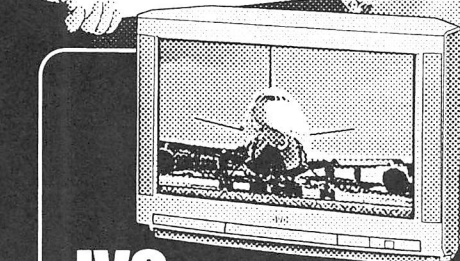
Villagers travelling along Taverner Drive on the evening of Saturday 11<sup>th</sup> January must have wondered whatever was going on. What were those lantern-bearing adults doing wandering around the Orchard Trees?

What they saw was the first Community Orchard Wassail. Sixteen members and friends met at The Railway Inn. Led by Synchronicity, a Leicestershire folk duo, the group processed to the orchard by lantern light, chanting a Gloucestershire Wassail;

*Wassail wassail all over the town,  
Our toast it is white and our ale it is brown.  
Our bowl it is made of the white maple tree,  
With the wassailing bowl we'll drink to thee.*

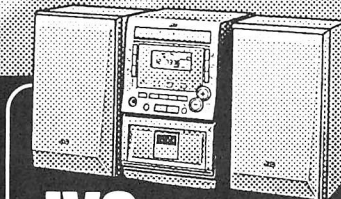
The group then circled clockwise three times around the trees, singing a wassail. A toast was proposed to the trees, cider poured at their roots, and the ladies then hung pieces of toast in the branches. The men fired party poppers instead of shotguns, to emulate the tradition of warding off evil spirits.

The wassail bowl, made of sycamore was passed around for everyone to sip the mulled cider.



**JVC Nicam Widescreen TV**  
 • 28"/66cm Visible Screen • Auto Aspect Switching  
 • 2 x 10 Watts Full-Range Speakers • T-V Link  
 • Fastext • Supplied With Deluxe TV Stand  
 Model AV28CT1EBC

**449.99**

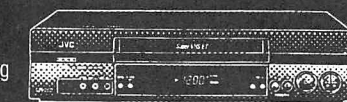


**JVC Micro System**  
 • 10 Watts x 2 (at 10% THD)  
 • Cassette Player • CD Player  
 • 1-bit D/A Converter • RDS Tune  
 • Hyper Bass Sound System  
 Model UX-M3R

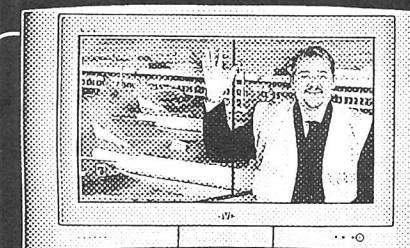
**99.99**

**JVC Super VHS VCR**

• Super VHS High Resolution • Super VHS ET Recording  
 • Hi-Fi Stereo With Nicam • VideoPlus+  
 • Express Programming  
 Model HR-S5956EK



**149.99**



**JVC Natural Flat Widescreen TV**  
 • 32"/76cm Visible Screen • 100Hz DigiPure Pro  
 • 2 x 20 Watts Full-Range Speakers • Nicam Stereo  
 • Advanced Quick Teletext • Supplied With Deluxe TV Stand  
 Model AV32X25EKGVC

**999.99**



**JVC Compact Super VHS Camcorder**  
 • Digital Photo Capture • Snapshot Mode  
 • 700x Digital Hyper Zoom  
 • 2.5" LCD Colour Monitor  
 • 118 Combinations Of Digital Special Effects And Scene Transition  
 • Digital Picture Improvement Technology  
 Model GR-SX158EK

**379.99**



**RTV**

23-27 Station Road, Ratby,  
 Leicestershire LE6 0JQ  
 Tel: Leicester (0116) 2394544

We are an independent retailer - with friendly local service and personal attention - but we're also members of EURONICS - Europe's biggest independent electrical buying group, which means we can offer you the very best deals on the highest quality brand names!

**EURONICS CUSTOMER CARE**  
 • TOP BRANDS AT LOW PRICES  
 • SPECIAL OFFERS  
 • LOCAL DELIVERY  
 • GUARANTEED AFTER SALES SERVICE  
 • EXPERT STAFF

**EURONICS CENTRES**

*Making your money go further!*



## WASSAILING

After the wassailing, everyone returned to the pub to enjoy the rest of the evening together. The traditional tray of yew, nuts and a lighted candle, symbols of long life, fertility and the love she brings, was presented to the landlady. Thanks to the 'Railway Inn' and it's customers for their welcome!

(The following morning all remains of party poppers were cleared away. The toast was left for birds to enjoy. This was originally supposed to bring good luck.)

The wassail traditionally marked the beginning of a new agricultural year, the trees were 'blessed' in this way in the hope of a fruitful harvest. Perhaps you may feel it is inappropriate to revive what, after all, were pagan customs, in the 21<sup>st</sup> century. But isn't it a good thing to celebrate together with song and friendship, valuing and sharing orchard trees planted for everyone in the community? We'd welcome reader's views on this.

If you would like to join Ratby Community Orchard Group, it costs just £2 a year or £5 per family. Phone Sue on 239 4873 for information

Or complete the form below and send to:  
3 Ingle Drive with your money!

### RATBY COMMUNITY ORCHARD

Name \_\_\_\_\_

Address \_\_\_\_\_

Post Code \_\_\_\_\_

Telephone \_\_\_\_\_

Please find enclosed cheque/cash for £ \_\_\_\_\_

Cheques made payable to 'Ratby Community Orchard Group'



### OAKLANDS RIDING SCHOOL



WE CATER FOR EVERYONE FROM  
THE NOVICE TO EXPERIENCED RIDER

All weather riding area  
Ring Julie on 238 7570

## RATBY LOCAL HISTORY GROUP

**Latest Update** - Our Group is nearly two years old and has 33 members already, we hold a regular meeting every two months between September and May in the Village Hall, plus we organise a number of outside activities and field walks. There are often nearly 40 persons attending our meetings.

**Why not come along and give us a try?**

**January Meeting** - By the time of this issue of Wot, we will have held our first meeting of 2003. This is when Dennis Green is to relate to us of his Memories of Ratby the 1930s. Also Doug Harwood will be describing the Impact of Ratby's 1770 Enclosure Act and its effect on the Landscape. We will report on this meeting in the next edition.

**Our Next Meeting** - This will be held on Friday 28<sup>th</sup> March in the Village Hall at 7.30pm. The Archaeology of Bosworth Field will be the subject for the evening



### AN INDEPENDENT PRACTICE

Eye Examinations  
Frames and Lenses at Competitive Prices  
Prescription and Non-RX Sunspecs  
Daily and Monthly Contact Lenses  
New Varilux Panamic Varifocals  
Any Optician's Prescription welcome

### NEW OPENING TIMES

Monday-Friday 9.30-1pm 2-5pm

Closed Wednesday

Saturday 9.30-1pm

47 Main Street, Kirby Muxloe  
Tel: 0116 239 4288

## NOTES FROM ST PHILIP AND ST JAMES.

We had a wonderful day on 3<sup>rd</sup> November. During the morning we celebrated the restoration of the church (there's a few more improvements planned), and in the afternoon a monsoon couldn't put off a load of people, with their friends, from churches in the area coming together for a confirmation service. It's only two weeks into the New Year but Christmas seems an age away. We had a great day at the beginning of December when Mr Scrappy (a bear), and his friend Dandy Lion (a shy lion) came to visit us with their friend John Fryer to talk about what the weeks of Advent mean. It was brilliant to be able to welcome so many people to the Carol Service on the 22<sup>nd</sup> in the evening, and the Family service on Christmas Eve. During the All Age Worship service on 5<sup>th</sup> January we were thinking about what makes us special as Christians, and why people might want to come along and find out. Quite a few people have been doing just that lately, you'd be welcome to come along as well.

### PIP'S PRIVATE HIRE

0116 239 0909

GROBY \* RATBY \* KIRBY

B'HAM & E. MIDLANDS

AIRPORTS

LOCAL and DISTANCE

OAP TOKENS



### PABARI'S RATBY NEWS

5 STATION ROAD RATBY

0116 239 3287

For the Largest Selection in Ratby of  
BEERS WINES and Spirits

A VAST CHOICE OF CONFECTIONERY &  
SOFT DRINKS

A LARGE VARIETY OF GREETING CARDS,  
WRAPPING PAPER and STATIONERY

NEWSPAPERS and MAGAZINES  
DELIVERED TO YOUR DOOR DAILY

We are Agents for  
SKETCHLEY DRY CLEANING

Video rental and Photocopying  
OPEN Monday-Friday 6.15-1pm. 2.30-10pm  
Saturday 6.15-10pm  
Sunday 7.30-2pm. 7pm-9pm

## THE VILLAGE QUIZ

The village quiz, held biennially, and organised by The Ratby Village Society, was won for the second consecutive time in 2002 by The Village Society Team captained by Anthony Haywood.

It was an extremely close contest, the scores being; RVS 75, Methodist Church 74, and Women's Institute 71. The result, in all probability, reflects a very balanced set of questions prepared by Betty Hulme, a feat in its own right.

As in previous contests the Question master was Peter Smith, who jollied the proceedings along in jovial fashion, ably assisted by scorer Gill Hollyman and timekeeper Robert Hollyman. The fun-filled evening raised £65, which was donated to The Rainbows Children's Hospice.

For details of Ratby Village Society please contact the secretary on 238 7240.

Mr Fred Harding presents the Harding Shield to Anthony Haywood, Captain of the winning team.



### DEADLINE DATE

For APRIL / MAY ISSUE

**MARCH 14th**

ADVERTS 239 3279

ARTICLES 239 4873

EDITOR 239 3367



## NEW YEAR HONOUR

Tree dismembered – ruefully.  
Tinsel and baubles boxed  
perforce one week betimes,  
a holiday to fulfil.

Journey o'er. A fond embrace  
presaged goodwill within the cottage.  
Choral music, from a black stack,  
sweetly permeated the elegant home.  
Christmas lights twinkled  
with heartwarming welcome of joy and love,  
setting the scene for a blithesome eve.

Dinner at eight  
when well-met guests gathered  
at lamplit table  
of choice-drawn fare,  
savoured, measured, leisured.  
Rose tinted wines imbibed,  
rose tinted times remind.

Came the midnight hour.  
Toasts raised,  
hopes raised,  
hosts praised.  
Young at heart oldies  
shake a hesitant leg  
to upbeat throb of disco song  
making a start as we wish to go on  
happily throughout the New Year.

Hoz Jan. 2003

\*\*\*\*\*

Want to feel fitter? Sport at your own pace?  
Like being part of a team? Sport, but not too seriously?

### MIXED SPORT FOR FUN

(Keep fit, Basketball, Volleyball, Hockey etc.)

ALL AGES - MONDAYS 7.00 until 8.30pm

At Groby Community College

#### CONTACT:

Caroline Mattock on 01455-273119 (evg)  
or Mick Morgan on 0116-2386141

FIRST WEEK IS FREE SO GIVE IT A GO!  
WHAT CAN YOU LOSE BUT A FEW POUNDS!

## FRIENDS OF RATBY CAMPAIGN

The Friends of Ratby would like to wish everyone a very Happy New Year. Our meetings will continue with one difference. We are now holding monthly meetings at the Ratby Sports and Social Club from 7.30 pm to 8.30 pm. During this time you are welcome to come along and have a chat with us.

Our first meeting will be Tuesday 25<sup>th</sup> February.  
Hope to see you there.

Friends of Ratby Committee.

### A.H.COLEY

Plumbing and Heating Repairs  
New Installations, Bathrooms, Showers

\*\*\*\*\*

For a full range of Services contact;  
4 Saxons Rise  
RATBY LE6 ONF

Telephone 239 4277

### JULIE'S HAIRDRESSING MAIN STREET RATBY

CELEBRATING 30  
YEARS IN THE VILLAGE  
Traditional and Modern Styling  
Telephone 239 2406

### RATBY PHARMACY

58 MAIN STREET  
LE6 0LL

Tel. (0116) 239 3139

DISPENSING, FAMILY HEALTH CARE  
and ADVICE, PHOTOGRAPHIC DEV.

\*OPEN ; Mon.-Fri. 9am -1pm, 2pm-6pm\*  
Saturdays 9am-12.30pm

COLLECTION of PRESCRIPTIONS from  
L.F.E. and GLENFIELD SURGERIES

## RATBY CO-OPERATIVE BAND CONCERT

Reverend Richard Worsfold welcomed around 200 people to the annual Band Concert in Ratby Parish Church. Funds raised this year from the event will go towards the planned new porch for the South entrance to the church, and new instruments for the Band.

Compere for the evening was the Band's President, Phil Plant, who introduced the programme in his inimitable humorous style.  
This year the theme was music from films, and it proved to be an entertaining and varied programme.

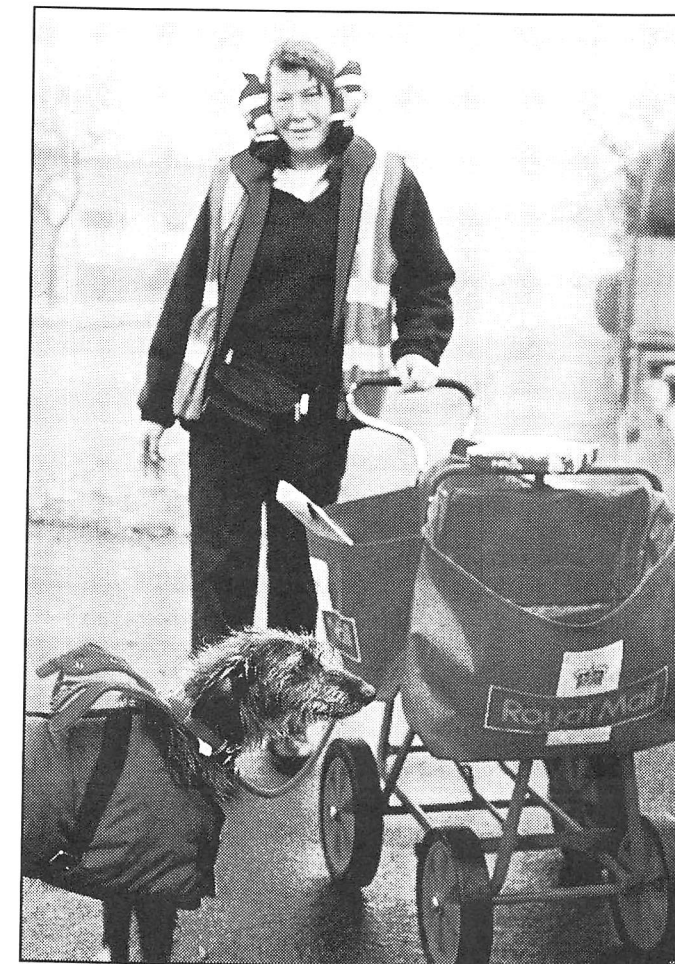
Beginning with the lively themes 'Midway', and then Vaughn Williams Overture for 'Henry V' (the 1944 film starring Lawrence Olivier), the Band treated us to a mixture of familiar and well loved music.

Rousing themes from films such as 'Laurence of Arabia' and 'The Great Escape' contrasted with lighter music from 'Singing in the Rain' and the encore, 'Those Magnificent Men in their Flying Machines', and there was a medley of music from 'West Side Story.'

For the children in the audience there was 'Hedwig's Theme' from Harry Potter, and music from 'Batman-The Movie'

The concert was considered 'Excellent' by all, and some members of the audience noticed that even the church's resident butterflies were inspired to flight.

Thanks to the generosity of Ratby Villagers just before Christmas, Alf and his 'assistant' post lady collected over £80 for East Midlands Dog Rescue! Well Done!!



### MELSWAY DRIVING SCHOOL

Mel Shipley D.O.T. A.D.I. M.I.A.M.  
All ages welcome....and nervous pupils  
Learn to Drive with Melsway

Telephone 238 6149  
3 Barton Close, Ratby.



### THE SERVICE GARAGE

MAIN STREET, RATBY  
M.O.T TESTS  
CARS (PETROL and DIESEL)

And  
MOTORCYCLES  
M.O.T. HOURS 9.00-4.15 Monday-Friday  
Closed for lunch 1-2  
TELEPHONE 239 4966

Mobile Phone Top-Up  
Cards now available

VODAPHONE  
CELLNET  
T MOBILE  
ORANGE

Going Abroad? Don't  
forget we can offer  
the following

Travel Insurance  
Foreign Currency  
E111 Medical Forms

Remember you can cash  
cheques and make deposits  
for these Banks at your  
local Post Office

LLOYDS TSB CO-OP  
A & L GIROBANK

RATBY  
POST  
OFFICE  
Main Street  
Ratby  
239 3001

And we also sell stamps!!!

\*\*\*\*\*

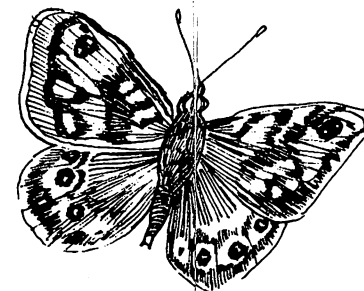
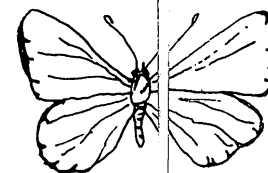
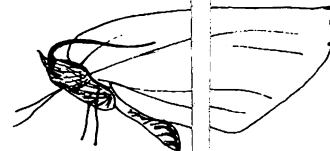
## 2003 VILLAGE EVENTS DIARY

DATE & TIME	EVENT	ORGANISERS	VENUE	TEL No
<b>FEBRUARY</b>				
Fri 7 <sup>th</sup> 7.30pm	Messiah performed by Newtown Linford Choral Society	Parish Church	Parish Church	01530 – 243822
Sat 8 <sup>th</sup> 10.00am	Coffee Morning & Clothes Sale	Parish Church	Church Rooms	2393009
Sat 15 <sup>th</sup> 10.00am	Coffee Morning and Nearly New Sale	Methodist Church	Chapel	2386276
Tues 18 <sup>th</sup> 8.00pm	AGM and Supper	Village Society	Village Hall	2387240
Wed 19 <sup>th</sup> 7.30pm	Neighbourhood Watch Meeting	N/ Watch Group	Church Rooms	2394450
<b>NB:- Coffee Mornings will be held at the Church and Chapel on alternating Saturdays thereafter.</b>				
<b>MARCH</b>				
Mon 3 <sup>rd</sup> 1.30pm	Young Families Toddler Group	Parish Church	Vicarage	2393009
Wed 12 <sup>th</sup> 7.45pm	The Humorous Side Of Funerals	Women's Institute	Village Hall	2387193
Tues 18 <sup>th</sup> 8.00pm	From Tollgate To Tramshed Talk	Village Society	Village Hall	2387240
Sat 22 <sup>nd</sup> 10.30am	Joint Sunday Schools Spring Fayre	Joint Churches	Church Rooms	2388271
Fri 28 <sup>th</sup> 7.30pm	The Archaeology Of Bosworth Field	History Group	Village Hall	2394168
Sat 29 <sup>th</sup> 10.00am	Table Top Sale and Coffee Morning	Methodist Church	Chapel	2386276
Mon 31 <sup>st</sup> 1.30pm	Young Families Toddler Group	Parish Church	Vicarage	2392009
<b>APRIL</b>				
Tues 1 <sup>st</sup> 7.30pm	Neighbourhood Watch Co-ordinators Meeting	N/ Watch Group	Church Rooms	2394450
Wed 9 <sup>th</sup> 7.45pm	Chernobyl Affected Children	Women's Institute	Village Hall	2387193
Sun 13 <sup>th</sup> 10.00am	Palm Sunday Procession and Service	Parish Church	Starts From Church Rooms	2393009
Fri 18 <sup>th</sup> 9.45am	Good Friday Activity Club for Children	Parish Church	Church Rooms	2393009
Sun 20 <sup>th</sup> 10.00am	Easter Day All Age Service	Parish Church	Parish Church	2393009
Tues 22 <sup>nd</sup> 8.00pm	Postal Services 1635 to 1840 Talk	Village Society	Village Hall	2387240
Sun 27 <sup>th</sup> tba	St George's Day Lunch	British Legion	Royal Oak Kirby Muxloe	2870570
Mon 28 <sup>th</sup> 1.30pm	Young Families Toddler Group	Parish Church	Vicarage	2303009

The following details about planned events taking place in the village during the next six months have now been made known the WOT team. We anticipate that there could well be more still in the planning stage, listings will be given in future editions as soon as we receive details of them. Our June edition will contain details for the second half of the year.

### Other regular Village events include :-

Bingo with the Evergreen Club on Monday evenings in the Village Hall  
 Indoor Carpet Bowls on Wednesday afternoons from September to April in the Village Hall.  
 Afternoon Tea Dances on alternate Wednesdays in the Church Rooms.  
 'Drop In' Coffee Mornings every Thursday morning in the Village Hall.  
 Evergreen Club Meetings on Thursday afternoons in the Village Hall  
 Coffee Mornings are held on most Saturdays alternating between the Parish Church and the Methodist Church.  
 The British Legion ( Ratby & District Branch) meet on the second Wednesday of each month at 8.00pm at the Groby Ex-Servicemens Club



DATE & TIME	EVENT	ORGANISERS	VENUE	TEL No
<b>MAY</b>				
Sun 4 <sup>th</sup> 2.00pm	Parish Walk from Newtown Linford	Parish Church	N/Linford Church	2393009
Sat 10 <sup>th</sup> 11.00am	May Fayre	Methodist Church	Chapel	2386276
Wed 14 <sup>th</sup> 7.30pm	Neighbourhood Watch Meeting	N/ Watch Group	Church Rooms	2394450
Wed 14 <sup>th</sup> 7.45am	Resolutions	Women's Institute	Village Hall	2387193
Fri 16 <sup>th</sup> 8.00pm	Episodes in a Village's History and AGM	History Group	Village Hall	2394168
Mon 19 <sup>th</sup> 1.30pm	Young Families Toddler Group	Parish Church	Vicarage	2393009
Wed 20 <sup>th</sup> 8.00pm	Talk – The Special Constabulary	Village Society	Village Hall	2387240
<b>JUNE</b>				
Wed 11 <sup>th</sup> 7.45pm	History of Monologues	Women's Institute	Village Hall	2387193
Sun 15 <sup>th</sup> tba	Guided Walk and Tea in Chipping Camden	History Group	Leave from Ratby tba	2394168
Tues 17 <sup>th</sup> 8.00pm	More Ratby Tales	Village Society	Village Hall	2387240
Mon 23 <sup>rd</sup> 1.30pm	Young Families Toddler Group	Parish Church	Vicarage	2393009
Sat 28 <sup>th</sup> 2.00pm	Garden Fete	Parish Church	Vicarage	2393009
<b>JULY</b>				
Mon 7 <sup>th</sup> 12.00 noon	Young Families The Big Picnic	Parish Church	Vicarage	2393009



## RATBY NEIGHBOURHOOD WATCH

These streets in our village are now in a neighbourhood watch scheme;  
Groby Road, Mill Drive, Ingle Drive, Calverton Close, Nook Close, Gillbank Drive, Robinsfield, Chapel Lane, Lee Rise, Ferndale Drive (part) Station Road, Bell Close, parts of Tyler Road, Danehill and Stamford Street, and Lockley Close.

### AND THE LIST IS GROWING

More and more residents can see the advantages of having a neighbourhood watch co-ordinator for their road, who will,

- Encourage neighbours to look out for one another, especially senior citizens.
- Keep residents up to date with latest crime information from the police.
- Foster greater awareness of any suspicious happenings in their neighbourhood.

**You may benefit from reduced home and contents insurance.**

Backed by the Police and Parish Council, an hour of your time every couple of weeks spent as NW Co-ordinator for your road would be time well spent. You know it makes sense.

**For more information ring 239 4450 or join us at our next meeting on Wednesday Feb. 19<sup>th</sup> at 7.30 pm in the Church Rooms.**

## CRIME FIGURES for NOVEMBER/DECEMBER 2002

28 reported incidents, with yet again a substantial number of car-related crimes. While these figures are down on last year this is little consolation for the victims.

If possible garage your car at night, and never leave anything of value visible in the vehicle.

Several residents suffered acts of garden vandalism over the Christmas period. Any information that can help identify those responsible should be passed to our local beat bobby, PC 228 Varney.



## Ratby Parish Council

### ANOTHER DAY AT THE OFFICE...



**At the time of writing we are looking for a new Clerk!**

Although Kathryn Lupton had only been in the role since last April, she brought a

professional approach to the

Clerk's role and the parish office that is much needed in the new environment in which councils are expected to operate.

She left to take up another post that has more convenient hours for her and her family but is continuing to work part-time for us until a replacement can be found.

### SPENDING YOUR MONEY...

When you receive your Council Tax bill you will see that a proportion of the charges relate to the parish. It is this amount that is paid to the parish council to meet village expenditure.

Each year the council has to prepare a budget for all the expenses it expects to incur for the coming financial year, which runs from the beginning of April to the end of the following March.



Costs include staff salaries, maintenance of the land that the council is responsible for (plus the play equipment at the Ferndale Drive and Burroughs Road community parks), council administration and improvements to the village. This year an explanation of the money we are spending on your behalf will be included with your Council tax bill, together with the information from the county and borough councils and the police. Look out for this in March.

### KEEPING YOU INFORMED...

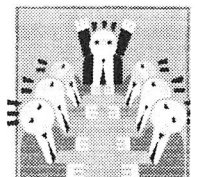
It would be wrong for the council to take up more space in the WOT! than it already does as it is the village – not the council - newspaper, but sometimes there are things going on, mentioned briefly in these pages, that we feel you should know more about. (Information about our finances is a typical example.) With this in mind we plan to occasionally produce our own

newsletter to keep you more in the picture about the activities of the council. The first issue will probably be based on similar information to the enclosure mentioned above but it will also have a reply slip, asking for your views about whether this is something you welcome and what you would like to see covered.

### TIME FOR A NEW COUNCIL?

Every four years the parish council is up for re-election and this will happen in May. By the next issue of WOT! we will be able to tell you which of the current councillors will be standing for re-election but perhaps this is something you would like to consider... The role of parish councils has changed radically in recent years and will change further with the Quality Parish Councils initiative expected this Spring, which will give accredited councils more power and authority than ever before. Ratby's current parish council is hopeful it will qualify for Quality status and if a new council is elected, it must be prepared to take this on board.

Although the role of councillor is part-time (and unpaid) it does require a full-time commitment - contrary to what some people believe the council is not just a "talking shop"! It is wrong for anyone to be a councillor unless they are prepared to take a full, active, role in all the activities of the council. Minutes of our meetings are available at the library and parish office but why not come to our meetings to see what we do and how we operate? Meetings are held at the Methodist church on the first Tuesday of the month, starting at 7.15 pm.



## Porter's Discount Carpets

121/3 STATION ROAD, RATBY

TELEPHONE 239 3238 or 239 5202. MOBILE 07860 551142

**QUALITY AT THE  
RIGHT PRICE**



**Laminated Flooring**

**FREE FITTING  
ON ALL CARPETS  
EXCEPT REMNANTS**



**GEORGIAN  
CARPETS**

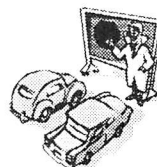


## Ratby Parish Council TRAFFIC CALMING

**Why?** It is over two years since a petition was presented to the County Council asking for some form of traffic calming on the approach to the school along Groby Road and Main Street. Since then, the parish council have repeatedly asked that Ratby be considered for a traffic calming scheme.

**How?** The preferred method of calming traffic is the introduction of speed tables (no longer the old "speed bumps" that drivers do not like) and to see what is being proposed, we recommend that you check out Station Road in Kirby Muxloe.

**Where?** Of course, if traffic calming is introduced in one part of the village this can create rat runs elsewhere as drivers look for a route through that does not slow them down! The Highways Department has produced a plan that takes this into account and all the through routes in the village will be "calmed".



**When?** We have known for some time that Ratby is in the reserve scheme for finance; this means we are almost certain to get funding in the next financial year, but the cost and implementation might have to be spread over two years due to the scale of the plan.

**What happens next?** The parish council has made its comments and the next stage is for the emergency services to be consulted. When their comments have been taken into account the plan will be exhibited in public by the Highways Department and that is the *opportunity for you to have your say*. We envisage that this will take place in the spring.

## CHRISTMAS FUN...



It probably already seems like a very long time since Christmas but this is the first opportunity to announce the winners in the

**Festive Window Competition.** In the homes category, first prize was awarded to Mr & Mrs Sutton of Markfield Road, who had created a delightful winter scene, with Mr & Mrs Bown of Groby Road in second place and a commendation to Mr & Mrs Briggs, also of Markfield Road. In the businesses category, first prize was awarded to Johnson's Store, second to Porters Carpets with commendations to Geary's and the Cutting Station.

When driving round the village it was apparent that more people had decorated their houses, rather than just the windows – Saxons Rise was particularly pretty - so next Christmas there will be changes to the rules to accommodate this.



The **Christmas tree for the village** turned out to be something of a saga... Not only was the weather cold and wet for the erection of the tree and installing the lights but, come the big "switch on" there was nothing. Not a glimmer! An

electrician and Powergen were both consulted but couldn't help and power from the primary school had to be used (with a very long extension cable) for the village carols... We would like to thank the Woodland Trust for the tree, John Cawrey and his colleagues and Bill Boat, our maintenance contractor, who erected it, the garage for lending us a long ladder, the council's maintenance man Simon Ingle, the primary school and, of course, Powergen, for finally fixing the problem!

## A PAT ON THE BACK...

The Mayor of Hinckley & Bosworth, Councillor Don Wright, attended a meeting of the parish council and wrote to the council afterwards. His letter included the following passage:

*"My wife and I enjoyed our visit to the parish council. As I said afterwards, I was impressed to see how much business was done, and effectively done, in one session. I am not always fortunate enough to attend meetings which are so successful!"*

## A PAT ON THE PAVEMENT!!

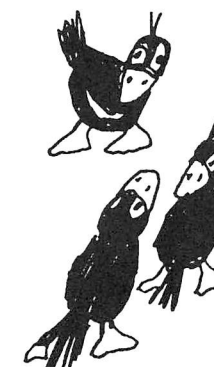


If you ride a horse on the village pavements, please don't leave anything behind...

## DATES FOR PARISH COUNCIL MEETINGS 2003

All meetings are held in the Methodist Church,  
Starting at 7.15 pm

February 4<sup>th</sup>  
March 4<sup>th</sup>  
April 1<sup>st</sup>  
May 6<sup>th</sup>  
June 3<sup>rd</sup>  
July 1<sup>st</sup>  
August 5<sup>th</sup>  
September 2<sup>nd</sup>  
October 7<sup>th</sup>  
November 4<sup>th</sup>  
December 2<sup>nd</sup>



## Accountancy, Payroll & Book Keeping For The Self Employed or Small Business.

Self Assessment Tax Returns, Vat, Computerised Payroll  
Accounts & Book Keeping

Confidential Service, Reasonable Fees  
No Job too Small

TEL. 01530 230 870

GAS  
APPLIANCE  
SERVICES

■ Appliance Servicing and Installation  
■ Breakdown and Repair Services  
■ Plumbing and Heating Installation  
■ Kitchen & Bathroom Design and Installation  
■ Quality Guaranteed by Experienced Engineers



YOUR DOMESTIC GAS  
BOILER SERVICED

6 SAXONS RISE, RATBY, LEICS. LE6 0NF

■ Tel: 0116 2393662



## PICTURE FRAMING

LOCAL BESPOKE

PICTURE FRAMING SERVICE

FREE HOME COLLECTION, DESIGN

AND DELIVERY

GALLERY STANDARD

at AFFORDABLE PRICES

CALL CHRIS on 0116 287 0432 ANY TIME

## RECIPE SALMON LOAF

### Ingredients

1 sliced hard-boiled egg  
225 gr./8 oz canned or cooked fresh salmon  
100 gr./4oz fresh breadcrumbs  
120 ml./4 fl. oz hot milk  
2 eggs beaten  
25 gr./1 oz. Butter  
1 teaspoon vinegar  
salt and pepper to taste  
Parsley to garnish

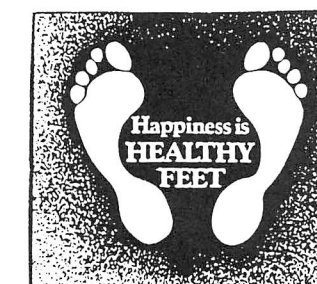
Greased 500 gr./1 lb loaf tin.

### Method

1. Arrange egg slices on base of tin.
2. Mix together the salmon, butter, breadcrumbs, milk, beaten eggs, vinegar and salt and pepper.
3. Press mixture into the tin and level the top.
4. Cover with foil
5. Bake for 30 mins in pre-heated oven 180 C/ Gas 4/350 F
6. Turn out of the tin when cold and garnish with parsley or cress.

### Scrivener

Peter Comley, MSSCh. MBChA.



Visiting Chiropodist

A Convenient & Professional Home

Treatment Service - with over 10 years experience

Tel: 01530 244887

Registered Member of the British Chiropody Assoc.