

# WOT!

About Ratby

PUBLISHED BY RATBY SCOUT GROUP



## CHRISTMAS TREE FESTIVAL

Ratby Parish Church was shining brightly with a forest of beautifully decorated Christmas trees for the first Christmas Tree Festival in the village. Local groups and organisations had either sponsored the event or decorated a tree with an appropriate theme. Each tree was an original, often with hand-made decorations, some amusing, and some thought provoking.

Proceeds from the festival will be shared between 2006 stonework repairs to the Church, which will cost around £5000, and Tanzania Link. David and Elaine Macho are the Church's link partners in Tanzania, involved in HIV/AIDS Support and past training.



A MERRY CHRISTMAS and A  
HAPPY NEW YEAR  
To All Our Readers



# Get a clearer Vision

### LC-32GA5E

32" visible screen diagonal in Widescreen format  
1,366 (horizontal) x 768 (vertical) pixel xRGB  
Advanced SuperView & Black TFT (low reflection)  
Quick Shoot Technology and Improved signal  
processing for high speed moving images  
High brightness of 450 cd/m<sup>2</sup>, contrast ratio of 800:1  
Optical picture control for adjustment to the  
prevailing light conditions (OPC)  
NICAM/A2 stereo decoder  
with Vertical Dolby Surround

**£1299.99**

Save £300  
on this set  
with The WOT!

Take your copy of The WOT!  
to RTV and buy this TV for £999.00

### LC-26P50E

26" visible screen diagonal in Widescreen format  
1,366 (horizontal) x 768 (vertical) pixel xRGB  
Advanced SuperView & Black TFT (low reflection)  
Quick Shoot Technology and Improved signal  
processing for high speed moving images  
High brightness of 450 cd/m<sup>2</sup>, contrast ratio of 800:1  
Optical picture control for adjustment to the  
prevailing light conditions (OPC)  
NICAM/A2 stereo decoder  
with Vertical Dolby Surround

**£999.99**

Save £150  
on this set  
with The WOT!

Take your copy of The WOT!  
to RTV and buy this TV for £749.00



We are an  
independent retailer  
- with friendly local service  
and personal attention - but we're  
also members of EURONICS - Europe's  
biggest independent electrical buying group,  
which means we can offer you the very best  
deals on the highest quality brand names!



- Low Prices
- Top Brands
- Special Offers
- Local Delivery
- After Sales Service
- Helpful Staff
- Expert Advice



23-27 Station Road, Ratby,  
Leicestershire LE6 0JQ  
Tel: 0116 2394544

**EURONICS CENTRES**  
*Making your money go further!*



## RATBY COMMUNITY ORCHARD GROUP

Members of the group celebrated APPLE DAY on the 22<sup>nd</sup> October with a special dinner at The Bull's Head. Our hosts, Phil and Marny prepared a magnificent menu, with all courses including English apples amongst their ingredients. For the main course there was a choice between Normandy Pork, Savoury apple, onion and Sage pie, or Chicken with red onion and caramelised apples! Starters and Puddings were just as scrumptious!

Our next event is the AGM and Skittles evening on December 12<sup>th</sup>.

We will be Wassailing the orchard trees again in January! This year's crop was small, so we'll have to make the wassail more effective this time!

### CAROLS around the TREE

Wednesday 14<sup>th</sup> December 6.30 pm at the Village Tree. With Ratby Band and the Primary School Choir.



## Ratby Village Society

It was purely by chance that during the year commemorating Trafalgar the Village Society included two programmes with a nautical flavour. 'Sea Shanties' had been enjoyed in March, and in September Andy Cereseto and David Hulme gave a joint presentation on 'Seamanship'. We were assailed by an in depth (no pun intended) catalogue of nomenclature of every item which forms the make up of a sailing vessel, from a Bermuda class yacht to a square rigged tall ship. Practical knowledge on navigation, tides, hazards and survival were imparted. Personal experiences of being a crew member of a tall ship were related, accompanied by slides of the Mediterranean voyage.

Back to dry land for the October meeting when Hoz Gamble extolled the virtues of summer scenery in the Austrian Tyrol, with its picturesque ski-resorts and lush valleys contrasting with the architectural splendour of historic Innsbruck, Salzburg and Vienna, cities associated with the 640 year reign of the Hapsburg monarchy.

Many in the audience relived happy memories of past holidays whilst viewing the scenes captured by the speaker's camera.

HG

### SNOW!

We are told that this may be a hard winter. For our February/March issue we'd love to include some of your photographs of the season, and stories of past winters. Please send them in!



## RATBY SCHOOL WINS GREEN AWARD

Ratby Primary School has recently received their 2<sup>nd</sup> prestigious Eco Schools 'Green Flag' award. This was celebrated at a presentation held at the school on Tuesday 11<sup>th</sup> October.

Eco Schools is a Europe wide scheme that works to decrease the impact that schools have on the environment.

The school has been focusing their efforts on reducing litter, recycling, saving energy and water and improving their school grounds. These improvements will not only help the environment but will also help the school save money.

The award has been achieved with help from Environ, Leicester's environmental charity, Hinckley and Bosworth Borough Council and Leicestershire County Council, who are co-ordinating the Eco-schools programme across Leicestershire.

Charlie Lewis Senior Education Officer, Environ, said:

"Ratby Primary has worked very hard to achieve this second Green Flag. They've created a garden in which they grow their own food and sell it to parents, they built a compost heap and use the compost on the garden and there are also plans for an interactive willow sculpture."

Ernie White, Cabinet Member for the Environment said: "To receive the Eco-School award once is an outstanding achievement. To receive the award a second time shows that the pupils have really integrated environmental improvements into everyday school life. Ratby Primary sets an excellent example to other Eco-Schools to continue their commitment and dedication to the programme."

For more information on Eco Schools please visit the web site

[www.eco-schools.org.uk](http://www.eco-schools.org.uk)

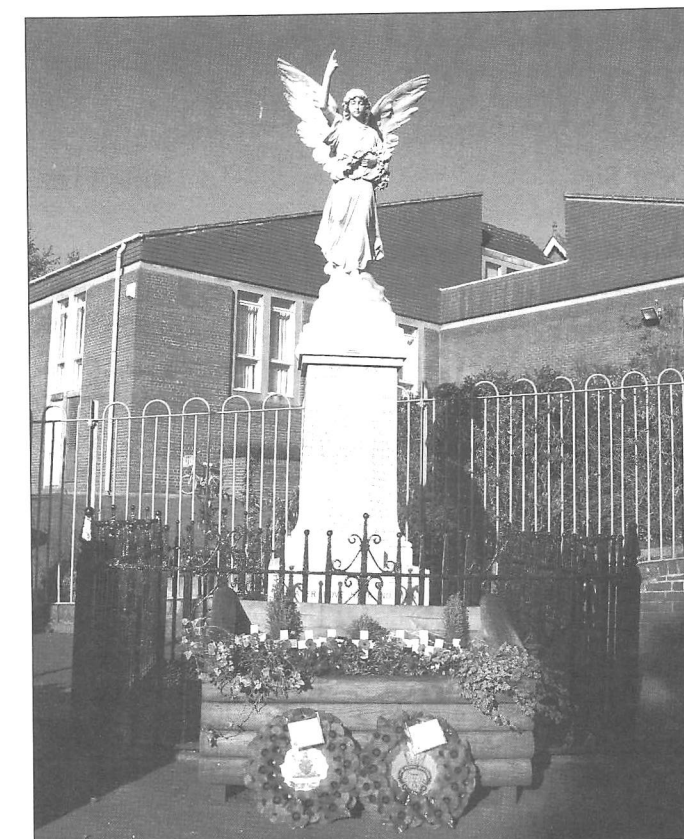
**RATBY PRIMARY SCHOOL**

☎ 0116 239 3610

Eco School Coordinator - June Morris

Head Teacher - Mrs Husband

**Congratulations Ratby School! Editor.**



### REMEMBERING AT CHRISTMAS

Thinking of those who gave their lives for our freedom in this 60<sup>th</sup> Anniversary year of the ending of the Second World War.



### OAKLANDS RIDING SCHOOL

WE CATER FOR EVERYONE FROM THE NOVICE TO EXPERIENCED RIDER

All weather riding area  
Ring Julie on 238 7570

### WATCH BATTERIES & STRAPS

FITTED WHILE YOU WAIT

ALL BRANDS

### SYKES JEWELLERS

8 Bradgate Road, Anstey

Tel: 0116 236 2510

[www.clockandwatchrepairs.co.uk](http://www.clockandwatchrepairs.co.uk)



GOLDEN CHARTER  
Pre-paid Funeral Plans

## Anstey & District Funeral Services

### J.G. Wright

A privately owned firm offering 24-hour personal and dignified service. Day & Night Private Chapels of Rest Hearse, Cars and Flowers Supplied Funerals Completely Furnished

58 Bradgate Road, Anstey  
Leicester LE7 7AA

Telephone: 0116 234 0548

### A. GOODWIN CARPENTRY, JOINERY & PROPERTY REPAIRS

Fitted Kitchens, Bedrooms,  
Bathrooms

\*\*\*\*\*

UPVC Windows, Doors, Porches.

Fascias & Soffits

Laminate Floors

NO JOB TOO SMALL

Telephone 238 7361

Mobile 0777 987 2211



## LETTERS TO THE EDITOR



Dear Sir

### WE DO CARE WHAT RATBY LOOKS LIKE

It was back in February that we asked the question "What does Ratby look like – Do we really care? The answer is 'Yes, we do and what is more we are doing something about it.'

We are now convinced more than ever by the strong sense of community that a great transformation can be made to change Ratby into a clean and tidy place where we are proud to live. We are not going to allow a thoughtless minority to spoil what we hold dear with unsightly rubbish, discarded food and fly-tipping.

But you may ask – How? There needs to be a fundamental change of attitude by some and this can only be done by claiming back the village for ourselves.

We are now progressing with the first phase of an education programme which is to highlight the issues but more importantly – **and this is where we urgently need your help** – Listen to everyone's ideas which can be taken on board and build them into a practical action plan.

We already have some very constructive suggestions, but **we are eager to have your ideas which could help us all.**

By the time you read this many will have seen the Village Society tree entitled 'Contrasts' at the Christmas Tree Festival which drew attention to a dramatic change that must take place.

We are also very heartened that Councillor Chris Boothby, now Works Officer for the Parish Plan Advisory Committee is working with us and using his experience and influence to help us achieve our goals.



*Whether you are a resident, an employer, employee, shopkeeper or at school or college – we really want to hear from you now. Please write, email or telephone:*

Horace Gamble  
14 Calverton Close

Tel.: 238 7240

Email:  
acereseto@bluechipassociates.co.uk

Yours faithfully

The Ratby Village Society Committee



### To the Residents of Ratby From Councillor Ken Hunnybun

It is with great regret that I tender my resignation as Councillor on Ratby Parish Council.

I feel strongly that my position on the Council has become untenable. This situation has been developing for a considerable time but I believe that with effective chairing could have been ameliorated if not avoided altogether.

I would like to thank those councillors and residents who have supported me in the various projects that I was able to set up on behalf of the village. My intention is to continue my involvement in these activities and I will of course still be available as a Borough Councillor for the Ratby, Bagworth and Thornton Ward.

Ken Hunnybun

### Box Brownie Photography

Picture this...

*Precious memories captured forever at affordable prices. Family celebrations, children's parties, special occasions. High quality, imaginative photography-special commissions welcome.*

*Looking for something different for your home or a special gift? See my range of mounted/framed original prints.*

TEL: Anne Brown 239 5927 or 07868 730123

Alliance & Leicester Agency  
34 Main Street

Dear 'Wot'

My wife Bhavna and I have been running the Alliance & Leicester Ratby Agency –Branch for almost 17 years, and the Post Office for almost 7. During this time the village has been growing steadily in size, and yet the number of our customers has been declining. So much so that the A&L is currently under serious threat of closing due to insufficient income to cover the overheads. I constantly hear people moaning that there aren't enough shops and amenities locally, and yet they refuse to patronise the ones that already exist! I wish to thank very much those of you who I regularly see supporting the local businesses, and I request those who don't to please try-you might be pleasantly surprised at the service you get.

I'm sure we all agree that for Ratby to maintain its unique character and close community spirit it is vital to have a thriving village centre.

Atul B Jobanputra.

**We couldn't agree more....can't imagine a village with no shops and services, a place with no heart. Editor**

### Bradgate Home Furnishings

9a Leicester Road Tel 0116 2366803

Anstey  
Leicester

Mattresses  
Pine & Metal  
Beds

Mexican Pine  
Bunks

Wardrobes  
&  
Chests  
Dining Suites

WE DO MORE  
Occasional Furniture

The Nook Anstey  
Ample Free  
Parking

Our Furniture Comes Fully Assembled  
Except Beds & Wardrobes

Stock Items  
Delivered Within  
48 HRS

Divans

Today  
Sleep On It Tonight  
Shop At Home Service

WE DO MORE  
Occasional Furniture

The Nook Anstey  
Ample Free  
Parking

Our Furniture Comes Fully Assembled  
Except Beds & Wardrobes

Our Furniture Comes Fully Assembled  
Except Beds & Wardrobes



## LETTERS TO THE EDITOR

Dear Editor,

Thanks for the amazing pictures of me and others at Ratby School circa 1950. Please could you get me Margaret Green's address/email/number so I can see if there are any more of Miss Cufflin's Classic photos around? Could do a book about it all.

The lucky guy in the front row next to Diana Marvin is Keith Coleman, my best friend with whom I started School. He lived two doors down from us in Markfield Lane, then he and his parents mysteriously disappeared one day and I was never able to contact him from then on. Which is a shame because I still have a couple of his Dinky Toys.

Keep up the good work.

Chris Garrett.

**Hope to hear more from you on progress with the book!**

**Where are you now Keith Coleman?! Editor.**

*Letters are always welcome, but your name and address must be supplied even if you wish to remain anonymous.*

### PABARI'S RATBY NEWS

5 STATION ROAD RATBY

0116 239 3287

For the Largest Selection in Ratby of  
BEERS WINES and Spirits

A VAST CHOICE OF CONFECTIONERY &  
SOFT DRINKS

A LARGE VARIETY OF GREETING CARDS,  
WRAPPING PAPER and STATIONERY

NEWSPAPERS and MAGAZINES  
DELIVERED TO YOUR DOOR DAILY

We are Agents for  
SKETCHLEY DRY CLEANING

Video rental and Photocopying  
OPEN Monday-Friday 6.15-1pm. 2.30-10pm  
Saturday 6.15-10pm  
Sunday 7.30-2pm. 7pm-9pm





*Lisa and staff look forward to inviting  
customers old and new to join in the celebrations  
for the festive season.*

**Many special offers served from 1st - 23rd December.**

Festive 3 course menu Served 6-9.30pm £13.95

Lunchtime 3 course festive 'meal deal' £5.00

Christmas Day Lunch, 4 courses £39.95 per head 12-3pm

**CHRISTMAS EVE:** Open all day, last orders 12 midnight. Food served until 3pm.

**CHRISTMAS DAY:** Open from 11am-1pm Pre-booked meals available from 12-3pm  
(Few places left, please call to book).

**BOXING DAY:** Open 11.30-9pm - food served until 3pm. Free buffet & disco until 8.30pm.

**NEW YEARS EVE:** Open all day, food served until 3pm, and then come and dance the night away to  
'Digital Disco' in Fancy Dress - Celebrity style (optional) - 1st prize: 2 course meal & bottle of wine.

**NEW YEARS DAY:** Open 11.30am-10.30pm food served between 12-3pm

*Lisa and her family would like to extend their very best wishes to one and all for a*

**HAPPY CHRISTMAS AND A PROSPEROUS NEW YEAR**



*The*  
**Plough Inn Ratby**



## PORTER'S DISCOUNT CARPETS

121/3 STATION ROAD, RATBY

TEL. 239 3238/239 5202

MOBILE 0860 551142

**Wishing all of our  
Customers a warm  
Happy Christmas**



## CHRISTMAS

Christmas time is nearly here  
Lots of presents and good cheer  
Smiling faces all aglow  
Everyone hoping it will snow

It's time to visit old friends and relatives  
Plan what we are doing for the festivities  
Will it be turkey and all the trimmings?  
This is only the beginning

Late night shopping for presents galore  
Every year we seem to spend more and more  
But every penny spent is worthwhile  
When you see the children smile

The hardest task of my life  
Is finding a present for my wife  
What do you get the woman who has everything?  
More jewellery, a necklace, perhaps a ring

'You shouldn't have' I can hear her say  
'It must have cost at least a month's pay'  
If I didn't buy you anything my dear  
My life wouldn't be worth living next year

Before we know, it will be Christmas morning  
Opening our presents while still yawning  
Ooh's and ah's is all we hear  
Thankyou's, kisses from those most dear

Then it's time to celebrate the birth of Jesus  
This after all is what Christmas means to us  
With all the hype and rushing in and out  
It's easy to forget what Christmas is really all about

By a Christmas Fan



### MAKING SPRING BRIGHTER

Members of Ratby Village Society pictured planting  
bulbs for Spring.  
Thanks are due to these hard working volunteers  
who are always willing to work for the village.

### THE CHANTRY CHOIR presents

**CHRISTMAS MUSIC FOR ALL**  
With Monica Winfield  
of Radio Leicester

Friday 16<sup>th</sup> December, 7.30 pm  
Ratby Methodist Church

Admission by ticket £5 (Tel 2386321)  
In support of Leicester Children's  
Holiday Centre (Mablethorpe)



**MELSWAY  
DRIVING SCHOOL**

BEST WISHES for CHRISTMAS  
and A HAPPY NEW YEAR  
from MEL to all past, present and future clients

Telephone 238 6149 3 Barton Close, Ratby.

## JULIE'S HAIRDRESSING

MAIN STREET RATBY

CELEBRATING 30  
YEARS IN THE VILLAGE  
Traditional and Modern Styling  
Telephone 239 2406



## Ratby Parish Council

13 Station Road

Tel: 0116 2390167

### VANDALISM ON THE PARKS

Since the new play equipment was installed on Burroughs Road and Ferndale Park at a cost of £24000, it has been subjected to a numerous attacks by persons unknown.

This includes graffiti, paint, bolts being undone and just recently the roundabout on Burroughs Road Park has been set on fire with the litter bins thrown on top for good measure. More dangerously glass has been scattered across the play equipment and surrounding grass. All residents pay for the increasing costs of repair. This is your play equipment, paid for by you; please help us to protect the parks from this mindless vandalism. Please report any incidents or information to the police on telephone no. 222222 or leave a voice mail message for the local police officer, PC A Dowey on tel. no. 0116 2485675, (i.d no.'4344').

### PRECEPT

The Parish Council have chosen to take a pro active stance in trying to help the youth and children of the village in the coming year and hopefully begin to tackle some of the problems in the village. Additional funding in the next Precept budget will help pay for new play equipment and help to establish youth activities within the village. This extra funding will cause the Precept to be increased but without this funding the facilities in Ratby would decline. The Parish Council therefore hopes you will support this decision. The Precept for 2006/07 will form part of the Parish Council's agenda for the monthly meeting held on Tuesday, 6 December 2005. Full details of the Precept budget will shortly be available on the Parish Council website, [www.ratbyparishcouncil.org.uk](http://www.ratbyparishcouncil.org.uk).

### OTHER NEWS

The Parish Council is pleased to be able to help the local youth football teams, whilst their own pitches at Ratby Sports club are waterlogged. Two youth teams will be using the rear area on Ferndale Community Park for approx. two hours on a Sunday morning on a temporary basis.

Once again the Parish Council will be running the Christmas competitions for "Best Window Display" and "Best Lights Display", for further details please contact the parish office on see posters on notice boards.

*The Parish Council would like to wish everyone  
a Merry Christmas and a Happy New Year*

G Aldwinckle  
Parish Council Clerk

Mobile Phone Top-Up  
Cards now available

VODAPHONE  
CELLNET  
T MOBILE  
ORANGE

Going Abroad? Don't  
forget we can offer  
the following

Travel Insurance  
Foreign Currency  
E111 Medical Forms

Remember you can cash  
cheques and make deposits  
for these Banks at your  
local Post Office

LLOYDS TSB CO-OP  
A & L GIROBANK

**RATBY  
POST  
OFFICE**  
Main Street  
Ratby  
239 3001

And we also sell stamps!!!

## RATBY LIBRARY

Ratby Library has been very busy since it reopened in September. This has been particularly the case for several activity sessions that have been organised for local children and their families. During Family Learning Week and Half term the library held two activities where there were a multitude of crafts and tasks to do. Over 50 children attended each event and many took part in a Harry Potter quiz. They also made Wizard Hats and wands for the Family Magic Fun Afternoon and sparkly firework pictures during Half term. There are more children's activities organised at Christmas, see the diary for details.

A new monthly story and rhyme time for the under 5s also got off to a fantastic start at the end of October. The first session was attended by over 20 children including a group from Ratby pre-School. We had drinks and biscuits and made clown masks. There was a real party atmosphere. The primary school have also been visiting the library regularly and really made the library look even lovelier with the work they have completed for display.

### Dates for your Diary

#### Saturday 3 December 2005:

**Ratby's new library in Main St is being officially launched** by County Council Chairman, Mr David Bill, on Saturday 3<sup>rd</sup> December. Library staff are hoping to welcome as many Ratby residents as possible and have planned a day of fun for the whole family. There's a story time for under 5s from 10.00 to 10.30am. Members of Ratby Youth Band will be playing music with a Christmas theme from 11.30am. After the Chairman has cut the cake at midday, a free buffet will be provided, followed by face painting for children and a treasure hunt for the whole family.

Everyone is welcome to the launch day on December 3<sup>rd</sup>. The library will open at 9.30am as usual and stay open until 5pm.

#### Monday 12 December 2005

**Special Computer Tasters for Adults**; 10am-12noon. Would you like to give your Christmas cards a personal touch this year. Book yourself a 30



minute slot on a special taster to find out how to use Microsoft Publisher to make greeting cards. (Also at Groby Library, Wednesday 14 December 2005 2pm-4pm)

#### Monday 19 December 2005

**Christmas Cheer at Ratby Library.** Xmas Activities for the under 11s. 11am-12noon

#### Thursday 22 December 2005

**Christmas Wiggly Readers.** Stories and rhymes for under 5s at 2pm. (Older siblings may join us as it is the school holidays)

#### Thursday 26 January 2006

**Animal Magic Wiggly Readers.** 2pm

#### Thursday 2 February 2006

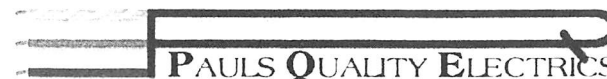
**Special Computer Taster.** Find out how to use the internet to help your child with their homework. Book a 30 minute slot 10am-12noon (Also at Groby Library Thursday 9 February 10am-12noon)

#### Thursday 14 February 2006

**Valentine's day Delights.** Crafts and stories for under 11s. 11am-12noon

There is lot of information about what is going on in the Library at  
[www.leicestershirevillages.com/ratby](http://www.leicestershirevillages.com/ratby).

## YOUR LOCAL ELECTRICIAN





**Fully Qualified City & Guilds Electrician**  
Registered with the NICEIC Domestic Installer Scheme

Upgrading Old Fuse Boxes - Rewires - Alarm Systems  
New Sockets & Lighting - All Domestic & Commercial Electrics

Call Paul Rumble on: (0116) 2872338  
MOBILE: 0798 0911 869 Website: [www.pqelectrics.com](http://www.pqelectrics.com)

*Learn to Drive at*

# FOWLERS

 School of Motoring 

All Levels of Tuition From  
**BEGINNER to MOTORWAY LESSONS**  
From Young to Old

Contact: **Pete Fowler** D.O.T. ADI  
Tel: **0116 238 6165** Mobile: 07760 258700



## RATBY LOCAL HISTORY GROUP

We are now part way into our season of meetings which are held every two months from September until May, usually on the last Friday of every month, 7.30 in the Village Hall.

**September Meeting.** Bob Jerrett gave us a very interesting talk on the history of the English Pub. We were not surprised to hear that there is a long history of alcohol consumption in England dating back to the Bronze Age.

The early English were mainly ale drinkers because the water from local wells was often poor quality. Ironically it was the Church that encouraged the development of inns and alehouses during the medieval period in order to provide shelter and subsistence to pilgrims on their way to holy shrines. From the 18<sup>th</sup> Century improvements in transport led to growth, with Stagecoach owners establishing their own chains of inns. Pubs and Hotels opened up to cater for railway travellers and staff.

Today country pubs are in decline, and city pubs owned by the big brewery chains.

After the interval Doug Harwood and Michael Ball followed on with short talks about the history of our local watering holes.

**January Meeting is to be held on January 27<sup>th</sup> at 7.30 pm in the village Hall.** Richard Buckley will present a talk about 'Recent Excavations in Leicester.' After the interval Neil Glenister will reveal the latest Heritage finds in Ratby.

### DEADLINE FEBRUARY/MARCH ISSUE No 116 FRIDAY 13th JANUARY

Editor 239 3367  
Adverts 239 3279

Articles may be sent to 3 Ingle Drived LE6 0NN  
Phone 239 4873 / sueboud@hotmail.com



## MARTIN TIBBLES

### PAINTING & DECORATING SERVICES

22 YEARS EXPERIENCE  
EXCELLENT REFERENCES  
FREE ESTIMATES & ADVICE GIVEN

For all your home interior & exterior redecoration requirements by a qualified tradesman, contact Martin on

0116 291 0489  
07855 412945



## A Bumper Winter Season of Concerts at Ratby Parish Church!

Sat 14th January Ratby Co-operative  
Band New Year Concert 7.30pm.  
Tickets £5

Sat 21st January Newtown Linford  
Choral Society Concert 7.30pm Tickets  
£7 (from Alliance & Leicester)

Sat 4th February Tudor Choir Concert  
7.30pm Tickets £5

Sat 25th February Ratcliffe Chorale  
Concert 7.30pm. Tickets £5

## RC Russell Construction LTD — BUILDING SERVICES —

Building Contractors  
Specialists in Insurance Work  
Smallwork Contracts  
Maintenance & Repairs

Cleaning & Restoration  
All Building Work Undertaken  
Serving: Commerce, Industry & Household  
Free Quotations Provided

Telephone Darren on 07745 224900 or James on 07793 642045  
Tel: 01455 846508 Fax: 01455 846515  
7 Stafford Street, Barwell, Leicestershire.



## HIS and HERS

**LADIES AND GENTS  
HAIR DRESSING**  
OAPs REDUCED RATES  
Appointments not always necessary.

156 STATION ROAD, RATBY  
239 4429

## A.H. COLEY

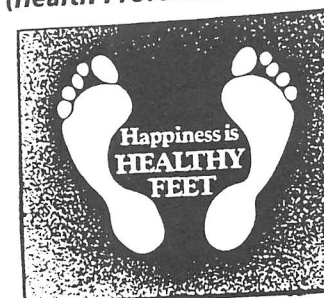
*Plumbing and Heating Repairs*  
New Installations, Bathrooms, Showers  
\*\*\*\*\*

For a full range of Services contact;  
4 Saxons Rise  
RATBY LE6 0NF  
Telephone 239 4277

## THE SERVICE GARAGE

MAIN STREET, RATBY  
M.O.T TESTS  
CARS (PETROL and DIESEL)  
And  
MOTORCYCLES  
M.O.T. HOURS 9.00-4.15 Monday-Friday  
Closed for lunch 1-2  
TELEPHONE 239 4966

Peter Comley, MSSCh. MBChA.  
REGISTERED WITH THE HPC  
(Health Professions Council)



Visiting Chiropodist  
A Convenient & Professional Home  
Treatment Service - with over 10 years experience  
Tel: 01530 244887

## RATBY PHARMACY

58 MAIN STREET  
LE6 0LL

Tel. (0116) 239 3139

DISPENSING, FAMILY HEALTH CARE  
and ADVICE, PHOTOGRAPHIC DEV.

\*OPEN ; Mon.-Fri. 9am -1pm, 2pm-6pm\*  
Saturdays 9am-12.30pm

COLLECTION of PRESCRIPTIONS from  
L.F.E. RATBY GROBY GLENFIELD SURGERIES

## LISA'S IRONING SERVICE

A FAST, FRIENDLY, RELIABLE SERVICE  
PICKED UP AND DELIVERED FREE

Small basket £10

Medium basket £15

Large basket £20

PHONE LISA on 239 4420 or 07733 105374



GAS  
APPLIANCE  
SERVICES

- Appliance Servicing and Installation
- Breakdown and Repair Services
- Plumbing and Heating Installation
- Kitchen & Bathroom Design and Installation
- Quality Guaranteed by Experienced Engineers



## YOUR DOMESTIC GAS 'BOILER SERVICED'

6 SAXONS RISE, RATBY, LEICS. LE6 0NF  
Tel: 0116 2393662



## MADE YOUR WILL YET?

"I can come to your home at a time to suit you and give professional, friendly advice on 'Wills' Trusts and Estate Management."

Our Standard Will £19.95 + vat

Also

Power of Attorney: Property Trusts:  
Will Storage: Inheritance Tax Wills  
Funeral Plans: Children's Trusts.

Telephone Mrs Chris Thomas  
For an appointment or brochure  
01509 502264

In Home Legal Services  
Member of the Society of Will Writers