



# WOT!

## About Ratby

PUBLISHED BY RATBY SCOUT GROUP



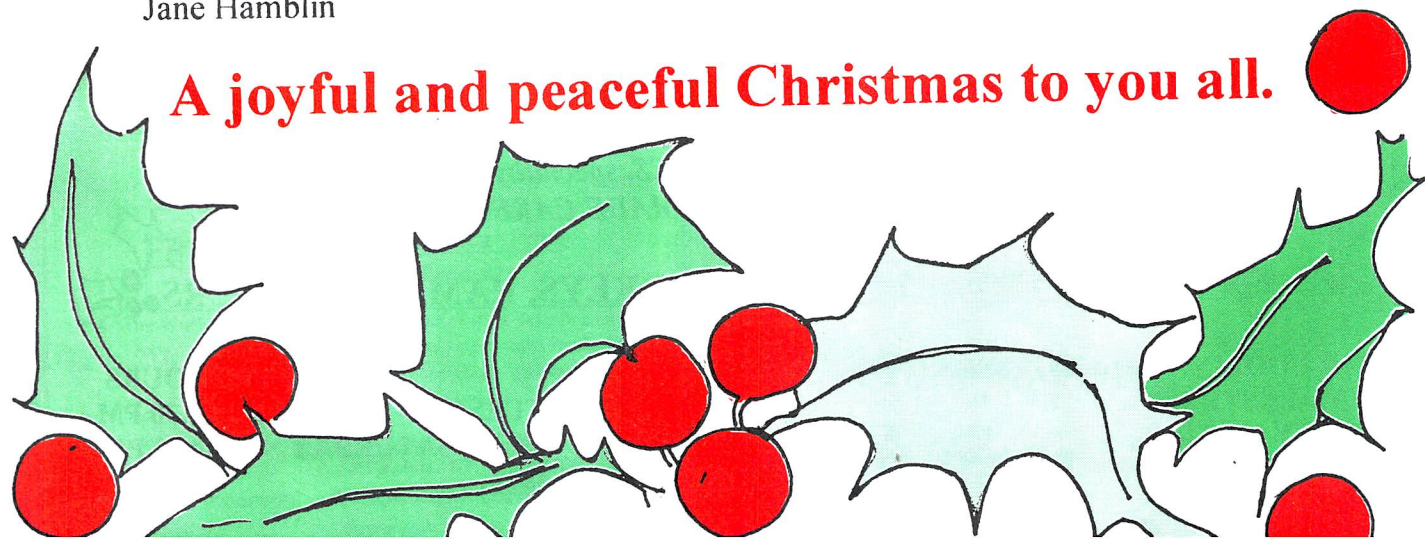
## THE COMING OF THE KING

What are you going to do over this Christmas period to fill the spaces between eating and drinking? Well you will come to a service at one of the churches of course, but what else? Will there be a trip to the cinema? If we are to believe the hype the blockbuster this Christmas will be the third part of the Lord of the Rings trilogy entitled "The Return of the King". As the film opens, Sauron's forces have laid siege to the capital city of Gondor. The once great kingdom has never been in more desperate need of its king as the power of the ring threatens to rule the race of humans "and in the darkness bind them."

As we watch the television news or read the papers we must sometimes consider that our world has never been in more desperate need of someone to bring justice peace and love. One of the readings from the bible that we use at Christmas tells of the coming of light to a dark world. "The people that walked in darkness have seen a great light, on those living in the valley of the shadow of death, alight has dawned." It goes on to describe a king who will uphold justice and righteousness, "and he will be called, "Wonderful Counsellor, Mighty God, Everlasting Father, Prince of Peace". (Isaiah 9)

This is the King who comes to us at Christmas as a baby and calls his subjects out of darkness into his wonderful light. This is the kingdom in which we are called to stand for the values of peace and righteousness. This is the Coming of the King.  
Jane Hamblin

**A joyful and peaceful Christmas to you all.**





### EURONICS CENTRES

## THE ULTIMATE SOUND & VISION



**JVC Nicam Widescreen TV**

- 28"/66cm Visible Screen
- Auto Aspect Switching
- 2 x 10 Watts Full-Range Speakers
- T-V Link
- Fastext
- Supplied With Deluxe TV Stand
- Model AV28GT1S

**£399.99**



**JVC Micro System**

- 10 Watts x 2 (at 10% THD)
- Cassette Player
- CD Player
- 1-bit D/A Converter
- RDS Tune
- Hyper Bass Sound System
- Model UXP55

**£159.99**

**JVC Super VHS VCR**

- Super VHS High Resolution
- Super VHS ET Recording
- Hi-Fi Stereo With Nicam
- VideoPlus+
- Express Programming
- Model HR-V605

**£99.99**



**JVC Compact Super VHS Camcorder**

- Digital Photo Capture
- Snapshot Mode
- 700x Digital Hyper Zoom
- 2.5" LCD Colour Monitor
- 118 Combinations Of Digital Special Effects And Scene Transition
- Digital Picture Improvement Technology
- Model GRFXM39

**£349.99**



**JVC Natural Flat Widescreen TV**

- 32"/76cm Visible Screen
- 100Hz DigiPure Pro
- 2 x 20 Watts Full-Range Speakers
- Nicam Stereo
- Advanced Quick Teletext
- Supplied With Deluxe TV Stand
- Model AV32T25

**£799.99**



# RATBY

23-27 Station Road, Ratby,  
Leicestershire LE6 0JQ  
Tel: Leicester (0116) 2394544

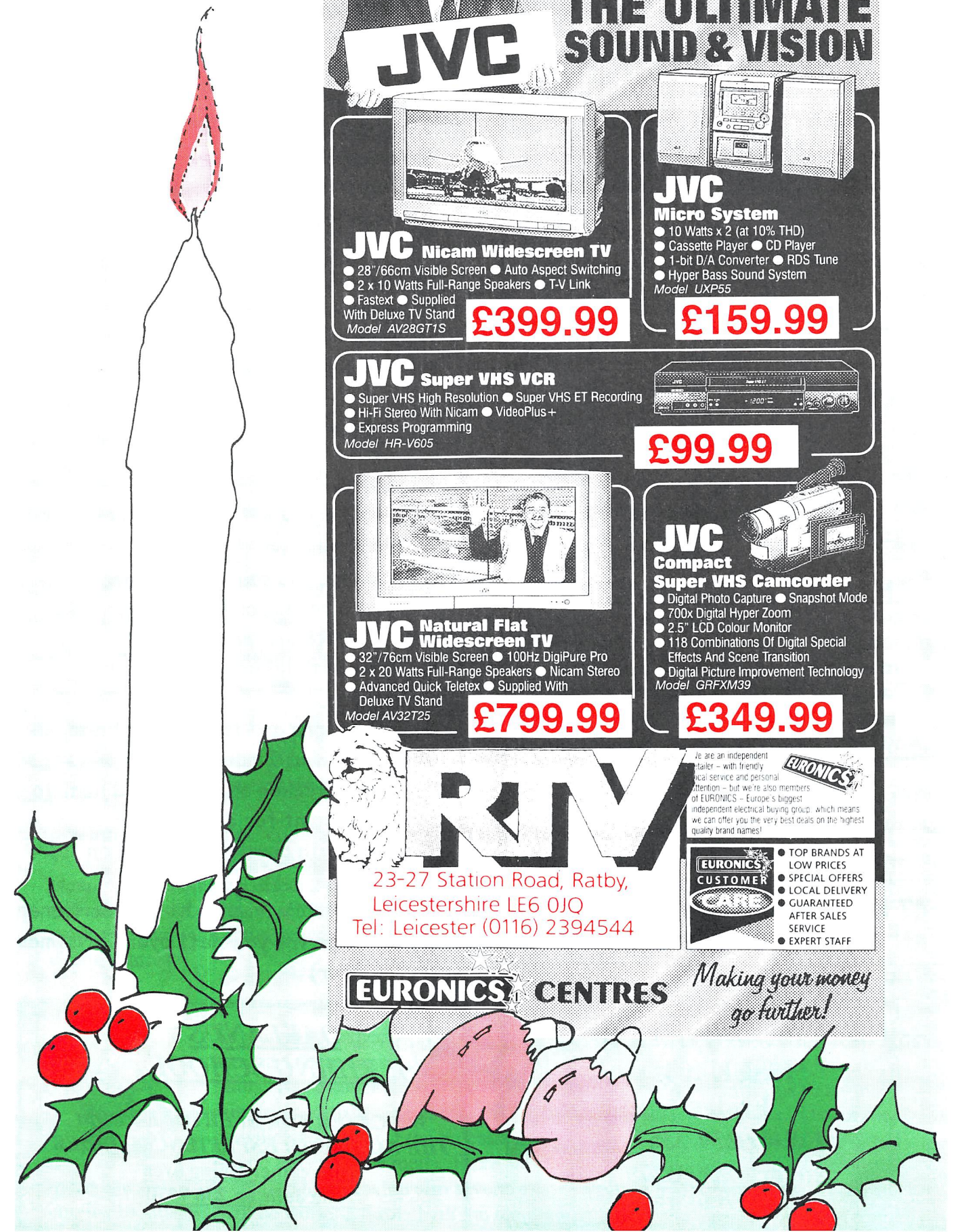
**EURONICS CENTRES**

*Making your money go further!*

EURONICS CUSTOMER CARE

- TOP BRANDS AT LOW PRICES
- SPECIAL OFFERS
- LOCAL DELIVERY
- GUARANTEED AFTER SALES SERVICE
- EXPERT STAFF

we are an independent retailer - with friendly local service and personal attention - but we're also members of EURONICS - Europe's biggest independent electrical buying group - which means we can offer you the very best deals on the highest quality brand names!







## A.H. COLEY

**Plumbing and Heating Repairs**  
New Installations, Bathrooms, Showers

\*\*\*\*\*

For a full range of Services contact;  
4 Saxons Rise  
RATBY LE6 0NF

Telephone 239 4277

## YOUR LOCAL ELECTRICIAN



Fully Qualified City & Guilds Electrician - RATBY

**DOMESTIC \* COMMERCIAL \* INDUSTRIAL**  
Upgrade Old Fuse Boxes - Sockets & Lighting - Rewiring -  
Extensions - Heating Timers - Ext. Fans - Alarm Systems etc.

Call Paul on: (0116) 2390642 or 0798 0911 869  
Also see the new Website: [www.pqelectrics.com](http://www.pqelectrics.com)

Accountancy, Payroll & Book Keeping  
For The Self Employed or  
Small Business.

Self Assessment Tax Returns, Vat, Computerised Payroll  
Accounts & Book Keeping

Confidential Service, Reasonable Fees  
No Job too Small

TEL. 01530 230 870

## PICTURE FRAMING

LOCAL BESPOKE

PICTURE FRAMING SERVICE

FREE HOME COLLECTION, DESIGN

AND DELIVERY

GALLERY STANDARD

at AFFORDABLE PRICES

CALL CHRIS on 0116 287 0432 ANY TIME

## HAVE YOU VISITED THE NEW DELICATESSEN IN KIRBY MUXLOE?

We offer a wide variety of COOKED MEATS, PORK PIES and PATE.  
Try our HOME MADE DELICACIES such as QUICHES, MEAT PIES, LASAGNAS,  
CHILLIES, BOLOGNAISE and CURRIES.  
SPECIAL MENU AVAILABLE DAILY

Enhance your meal with our FRESH SALADS, OLIVES, SUN DRIED TOMATOES,  
CHUTNEYS, PICKLES, OILS and SALAD DRESSINGS.  
FREE RANGE POULTRY, EGGS, and BACON and SAUSAGE  
are OUR SPECIALITY

WE CATER for BUFFETS and DINNER PARTIES

Come in and see our selection of Quality WINES, speciality BREADS, PRESERVES,  
MARMALADES, BISCUITS, HOME MADE CAKES and DESSERTS



For CHRISTMAS we are offering TURKEYS, HAM and HAMPERS

MD COOLING DELICATESSEN  
2 MAIN STREET  
KIRBY MUXLOE

OPENING HOURS  
TUESDAY-FRIDAY 8.30-6.30 PM  
SATURDAY 8.30-4.30 PM

TELEPHONE 0116 239 4802

## RATBY LOCAL HISTORY GROUP

**Visit to Earls Barton** - Ten members went along to Earls Barton for the day on September 20<sup>th</sup>.

The morning was spent in the magnificent All Saints Church. After lunch, there was a guided tour of the village by a member of their local history group and then a visit to the Village Museum and a sumptuous tea in the museum café. Barkers Shoe factory also featured in the day's outing.

**Our September meeting** - This was on Friday September 26<sup>th</sup>. The main part of the evening was a talk by Roy Bonser about the history of Desford and Braunstone Airfields. Roy described the many functions that the airfields were involved in from the opening of a landing strip on fields belonging to Hallfields Farm during the World War 1, right through to the closure of the Desford Airfield in 1953.

Braunstone Airfield was opened in 1935 and then acted as a satellite to Desford during World War 2; it only functioned as an airfield until the mid 1940's. After the interval, several members and visitors shared their own memories of the airfields and the impact of World War Two on life in Ratby.

**Our November Meeting** - At the time of writing, on November 28<sup>th</sup>, we are due to hear from Helen Boynton about 'The History of People and Places in New Walk Leicester'. This is to be followed by Horace Gamble who is to relate 'The Story of Ratby's Railways'.

We hope to provide more details in the next issue.

**Our Next Meeting** - This is to take place at 7.30pm on Friday January 30<sup>th</sup> 2004 in the Village Hall. Richard Clark will be presenting 'Roman Leicester brought up to date'.

This will be followed by Maureen Harris on 'Using property deeds to discover the social history of Church Lane'.

## CHALLENGE IN PERU

Ratby's intrepid fundraiser has successfully completed his adventurous trek in the Andes of Peru!

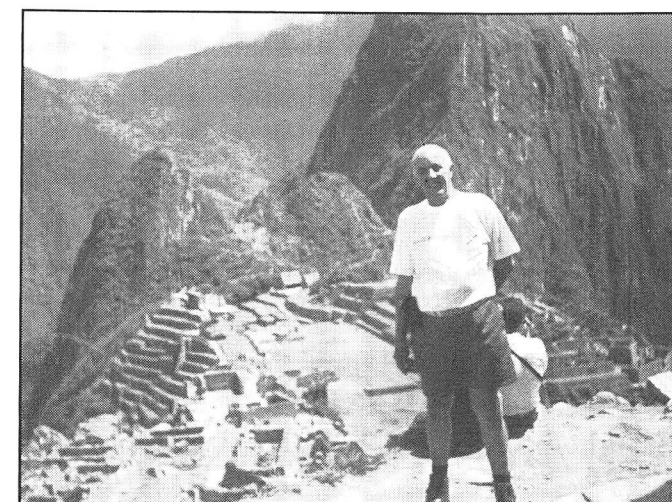
David Hulme arrived back on October 4<sup>th</sup>, 'totally exhilarated by the experience but thoroughly exhausted and jet lagged.' David had completed a rigorous fitness-building programme of walks to prepare for the trip, but he says, 'the nature of the trek was a lot harder than many of us had anticipated, it can only be likened to an endurance feat.' Many of the tracks were narrow, often cut into the side of a mountain or gorge, with a precipice dropping down to the torrential river below. 'No wonder,' he says, 'that we had to have helicopter rescue cover written into our insurance cover plans.'

'Day five,' he describes in his log, 'was a very long day indeed. We had a 5am wake up call, and set off up a very steep zigzag ascent to the Carca Chuco Pass (4395 mtrs) We climbed for five hours, and the views from the highest point were spectacular. We were able to see the Sacred Valley below, and the seven snow covered peaks. To cap it all was a wonderful sighting of two huge condors soaring ahead of us.'

David made the journey with a group of forty-nine participants from all walks of life, ranging from a 25 year old to a 74 year old. To crown his success he exceeded his personal target and raised more than £6380 for Cancer Research UK.

'Thank you to everyone who has supported this worthy cause,' he says.

Congratulations to David from the 'Wot' team! An inspiration to us all.



Enjoy a Healthier Lifestyle  
Discover the Benefits of *Aloe Vera*  
with Forever Living Products

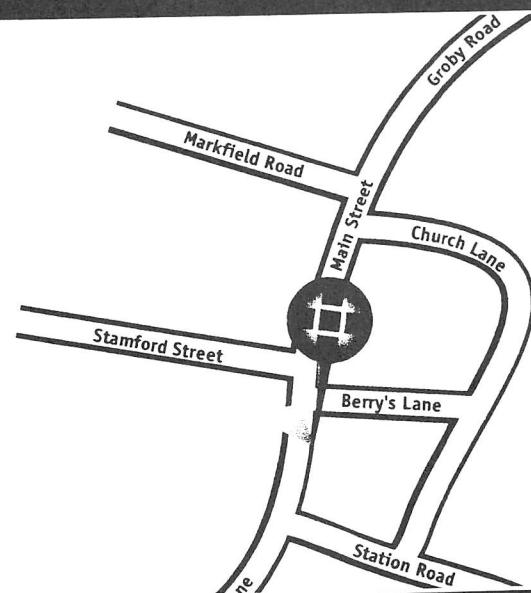
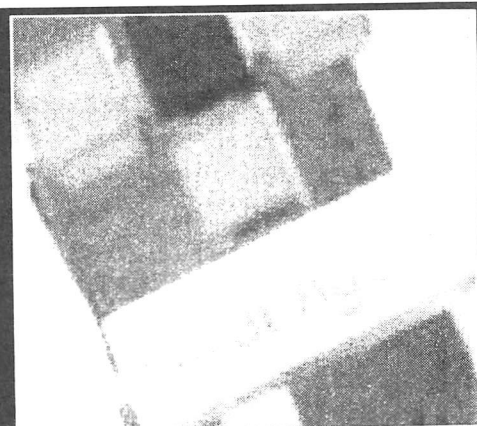
- ✓ The World's Largest and Best Grower of Aloe Vera Products
- ✓ Extensive range from Health Drinks to Skincare Products
- ✓ 60-day 'satisfaction or your money back' guarantee
- ✓ Millions of delighted customers

Phone NOW for more details tel: 0116 2393058  
mobile: 07754 140700

Christine Anderson - Independent Distributor of  
Forever Living Products  
(Forever Living Products is a member of the Direct Selling Association)



## Your local answer to everyday banking



**Find out more today**  
 Ratby Insurance Services, 32-34 Main Street, Ratby,  
 Leicester, LE6 0AL

**Your agent offers:**

**Current Accounts\***

**Personal Loans\***

**Credit Cards**

**Savings Accounts**



\*Bank accounts and Personal Loans are subject to status. Written quotations available on request. Personal Loans are provided by Alliance & Leicester Personal Finance Limited, a subsidiary of Alliance & Leicester plc, 61 Southgates, Leicester, LE1 5RR. Applicants for credit must be aged 18 or over. Alliance & Leicester plc. Registered Office: Carlton Park, Narborough, Leicester LE19 0AL. Registered in England. Company No: 3263713.

## LAUNCH OF NEW SCOUT FELLOWSHIP

Leicester West District Scouts are holding a launch party for a new branch of the Scout Fellowship, the general support section for the Scout Association. The launch will be on Saturday 31<sup>st</sup> January 2004 at "Sport in Desford", Peckleton Lane, Desford, commencing at 7.30pm. The evening will include a presentation about the Fellowship and a chance to socialise over a buffet and a drink.

Membership is open to anyone over 18 who is prepared to give a minimum of a few hours a year to support Scouting. Fellowship tasks are very wide ranging and could include interviewing new leaders, helping at the scout sports or teaching a specialist skill. The Scout Fellowship also has its own social programme to suit the interests of its members.

The organisers look forward to your support and further information can be obtained from Alan Tyler (0116 222 9133)



### A LETTER OF GREETING FROM THE NEW METHODIST MINISTER

How long have you got to live in Ratby before you "belong"? In most of the villages I know the answer would be at least 20 years! By any standards I guess that three months still makes me a "new girl" even though it feels to me as if I have been around forever.

So who am I? Well I have lived in Glenfield for nearly 25 years and was a member at Glenfield Methodist Church before entering the Ministry just over three years ago. I have pastoral charge of Epworth Methodist church, Blackbird Road so adding Ratby has been a challenge for my time management skills that I frequently fail. In my previous life I was a teacher and under that heading have done a number of things with a variety of age groups. I am kept from becoming too otherworldly by my husband and children. Brian is an accountant, working both in the city and the Midlands region, Liz (20) is studying Business Studies at Sheffield University, Vicky (18) is studying Food, Management and Marketing at Sheffield Hallam University and Philip (16) is in the sixth form. What I will do when they all flee the nest and aren't around to take their Reverend Mother down a peg or two I don't know.

I look forward to meeting many of you at chapel and village events during my time here. In this issue of WOT you will find information about what the churches are doing this Christmas. Do come and introduce yourself.

Jane Hamblin

*Learn to Drive at*

## FOWLERS

School of Motoring

All Levels of Tuition From  
**BEGINNER to MOTORWAY LESSONS**  
 From Young to Old

Contact: **Pete Fowler** D.O.T. ADI

**Tel: 0116 238 6165** Mobile: 07760 258700

## RATBY VILLAGE SOCIETY

### IRISH INTERLUDE

A new name was added to our list of 'entertainers' for the October meeting, when Mr Philip Shreeve of Leicester presented a slide show with a difference. His photographs from a tour in Southern Ireland were accompanied by a taped commentary with a backing of appropriate native music, either foot-tapping jigs and reels or mawkish sentimental songs.

The 'Emerald Isle', that particular week, lived up to its reputation for bouts of soft weather, which did not detract from some most imaginative photography. In fact the grey lowering skies over mountain, sea and lough gave the pictures a haunting quality, which captured completely the stormy atmospheres. We look forward to an encore in the not too distant future.



**'Why was Cinderella so bad at football?'  
 'Because she had a pumpkin for a coach.'**



## PABARI'S RATBY NEWS

**5 STATION ROAD RATBY**

**0116 239 3287**

**For the Largest Selection in Ratby of  
 BEERS WINES and Spirits**

**A VAST CHOICE OF CONFECTIONERY &  
 SOFT DRINKS**

**A LARGE VARIETY OF GREETING CARDS,  
 WRAPPING PAPER and STATIONERY**

**NEWSPAPERS and MAGAZINES  
 DELIVERED TO YOUR DOOR DAILY**

**We are Agents for  
 SKETCHLEY DRY CLEANING**

**Video rental and Photocopying**  
 OPEN Monday-Friday 6.15-1pm. 2.30-10pm  
 Saturday 6.15-10pm  
 Sunday 7.30-2pm. 7pm-9pm



## £9000 BOXING DAY BONANZA

That's the total that will be won in this year's annual LOROS Lottery Bumper Prize Draw! Not only do LOROS Lottery members enjoy a good chance of winning, with 350 prizes every week, but also there is no need to claim. Cheques are automatically posted out within a week of the draw.

This year it will cost £4.5 million, or £8.80 a minute to run the Leics and Rutland Hospice. Join today and support us. Ring 0116 231 8430.

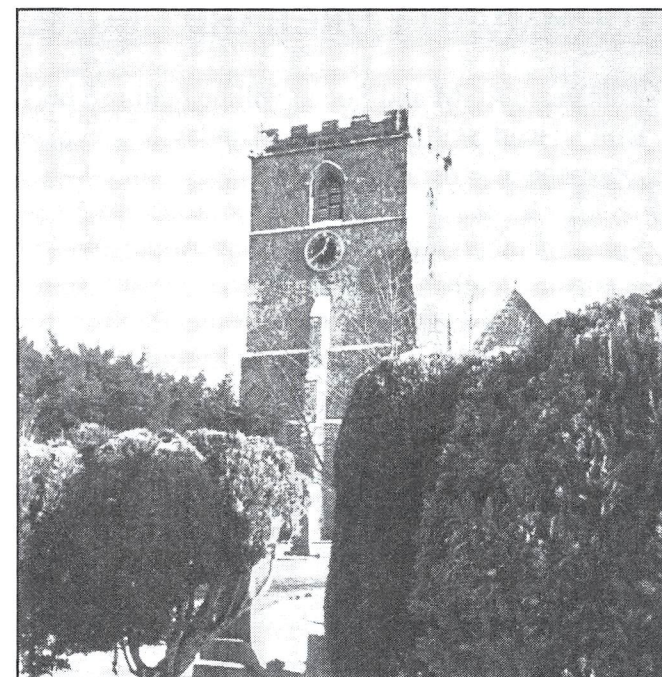
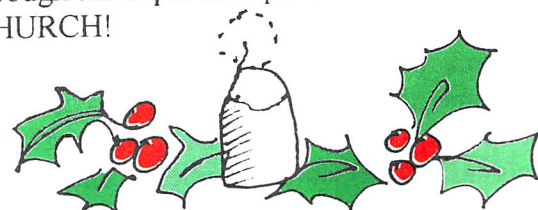
## JULIE'S HAIRDRESSING

MAIN STREET RATBY

CELEBRATING 30  
YEARS IN THE VILLAGE  
Traditional and Modern Styling  
Telephone 239 2406

## ST PHILIP AND ST JAMES

We've been having a busy time at church these last few months at our first Sunday service. In October we celebrated our Harvest Festival, and after giving thanks for all the good things we enjoy we dismantled the displays and took them straight out to some of our senior citizens who could not be with us. The tins, fruit and flowers became small gifts to let our friends know we are thinking of them. We've had loads of people in church celebrating baptisms during these lively services. During the November service we were thinking whether the Bible is still relevant to our modern life. With sketches, stories and some thought provoking items based on the Ten Commandments we discovered that yes-the Bible is still important to us. During December there will be lots of special events celebrating Christmas. A list is printed opposite. You'll be warmly welcomed as you step through the super new porch into YOUR CHURCH!



## RATBY CHURCH

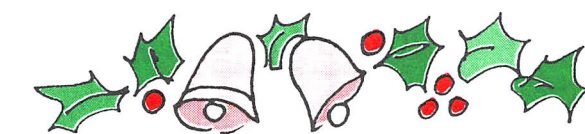
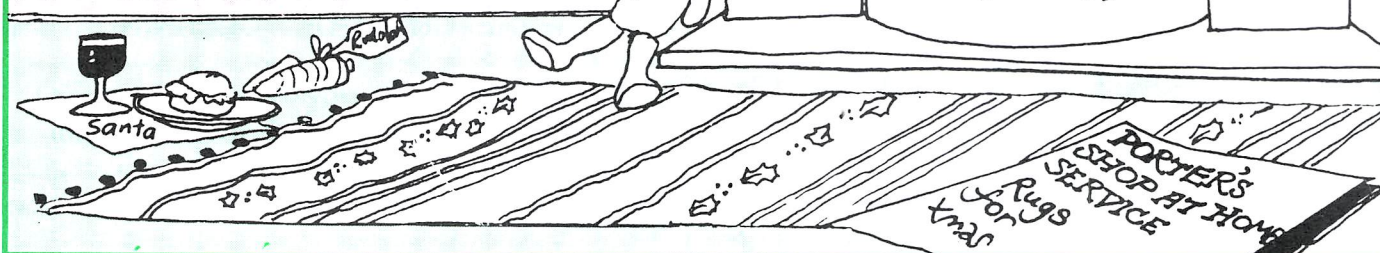
Standing proud in Windsor Grey,  
It can be seen from miles away  
Worthy of a centre stage  
This masterpiece from a bygone age.  
Just stand and pause as you pass by  
To see the tower grace the sky  
To look and see the three-faced clock  
Supported by the granite rock.  
Surrounded by the narrow roads  
Where ancient traders ferried their loads  
And blessed by two immortal names  
The Parish Church of St. Philip and St. James.

G.M. Copson

## PORTER'S DISCOUNT CARPETS

121/3 STATION ROAD, RATBY  
TEL. 239 3238/239 5202  
MOBILE 0860 551142

Wishing all of our  
Customers a warm  
Happy Christmas



## CHRISTMAS SERVICES IN RATBY

### Sunday 14th December

10.00am United Service with Nativity Play

6.00pm Carol Service  
*Methodist Church*

### Wednesday 17th December

7.30pm Carols round the tree (by Welfare Hall)

### Sunday 21st December

10.00am All-age Worship *Methodist Church*  
10.00am Morning Worship *Parish Church*  
6.00pm Candlelit Choir-led Carol Service

*Parish Church*

### Christmas Eve

4.30pm All-age Christingle Service  
*Parish Church*  
11.30pm Midnight Communion  
*Parish Church*

### Christmas Day

9.30am Family Service *Methodist Church*  
10.00am All-age Worship, followed by Communion *Parish Church*

Additional Services within the Bradgate Team  
Christmas Day 8.00am Holy Communion at Groby

## RATBY PHARMACY

58 MAIN STREET  
LE6 0LL

Tel. (0116) 239 3139

**DISPENSING, FAMILY HEALTH CARE  
and ADVICE, PHOTOGRAPHIC DEV.**

\*OPEN ; Mon.-Fri. 9am -1pm, 2pm-6pm\*  
Saturdays 9am-12.30pm

COLLECTION of PRESCRIPTIONS from  
L.F.E. RATBY GROBY GLENFIELD SURGERIES



## MELSWAY DRIVING SCHOOL

BEST WISHES for CHRISTMAS  
and A HAPPY NEW YEAR  
from MEL to all past, present and future clients

Telephone 238 6149 3 Barton Close, Ratby.

Mobile Phone Top-Up  
Cards now available

VODAPHONE  
CELLNET  
T MOBILE  
ORANGE

Going Abroad? Don't  
forget we can offer  
the following

Travel Insurance  
Foreign Currency  
E111 Medical Forms

Remember you can cash  
cheques and make deposits  
for these Banks at your  
local Post Office

LLOYDS TSB CO-OP  
A & L GIROBANK

RATBY  
POST  
OFFICE  
Main Street  
Ratby  
239 3001

**HAPPY CHRISTMAS and A PROSPEROUS NEW YEAR**



## OCTOBER MOODS

Gold autumn tints  
give hints  
of darker things-  
winter lurking in the wings.  
Short day, long night.  
Faint hearted sun, put to flight,  
abandons chilly naked trees,  
leaves long lost to upstart breeze.

Enjoy now, while ye may,  
bonus of most glorious day.  
Ramble where the rabbit burrows,  
unfolding fields of ridge and furrows,  
dreaming cows with vacant gaze,  
while sheep-they safely laze-  
below crow laden elms.  
Spirits soar into the realms  
of heavenly bliss at times like this.  
But autumn tints both red and gold  
will soon mulch down  
to leafy mould.

Hoz  
October 2003

**GAS  
APPLIANCE  
SERVICES**

- Appliance Servicing and Installation
- Breakdown and Repair Services
- Plumbing and Heating Installation
- Kitchen & Bathroom Design and Installation
- Quality Guaranteed by Experienced Engineers



GAS IN SAFE HANDS

**YOUR DOMESTIC GAS  
BOILER SERVICED**

6 SAXONS RISE, RATBY, LEICS. LE6 0NF  
■ Tel: 0116 2393662

**£30**

*\*Vat\**

## COMMUNITY ORCHARD GROUP

This years AGM and Social will be held in The Bull's Head Skittle Alley on Monday 8<sup>th</sup> December.

Some members were busy visiting Apple Day events in October. A descendent of Isaac Newton's famous apple tree was the highlight of a visit to Woolsthorpe Manor in Lincolnshire. A restored old orchard and stalls selling freshly pressed juice were features at Calke Abbey.

The group are planning to Wassail the Ratby Orchard trees once again in January!

A merry Christmas and fruitful New Year to all!

**'What is Tarzan's favourite Carol?'  
'Jungle Bells.'**



## Nianne Services Ltd

Your local Home Care Agency with home care at its best. 30 Years experience within the care work. Care home shifts covered or care within your own home. We also do domestic work, from cleaning to laundry.

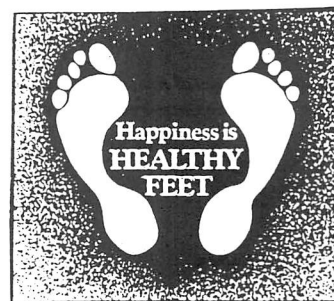
All staff are police screened (certificates shown on request). We also do moving and handling training with a certificate at the end of training.

24 hour contact by phone:- (0116) 2394331

E-mail:- [nianneservices@aol.com](mailto:nianneservices@aol.com)

Mobile:- 07900 811745

**Peter Comley, MSSCh. MBChA.**  
**REGISTERED WITH THE HPC**  
(Health Professions Council)



**Visiting Chiropodist**  
A Convenient & Professional Home  
Treatment Service - with over 10 years experience  
**Tel: 01530 244887**

Ratby Parish Council  
wish you all a

# Merry Christmas and a Happy New Year

**Come and have a sing!** The annual singing of Carols by the Christmas Tree will take place on Wednesday 17<sup>th</sup> December. (The tree will be near the village hall, by the school gates.)

**Trim up for Christmas!** It was noted last year that a lot of people decorated the whole of the outside of their home, rather than just the front window. As a result, there will be two categories in the festive trimming competition this year - one for windows and one for the front of the home. Judging will take place in the week commencing 15<sup>th</sup> December.

**Recycle your tree!** Hinckley & Bosworth have announced their usual tree-recycling programme. All you have to do is take your tree to the Sports Club car park between 3<sup>rd</sup> and 11<sup>th</sup> January and it will be taken for recycling. (One amusing thought - the leaflet does clarify this is only for *real* trees!)

\*\*\*\*\*

## GROW YOUR OWN - HAVE AN ALLOTMENT!

Some of us can remember the days when people had an allotment and grew their own vegetables (and there is *nothing* to beat new potatoes freshly out of the earth, cooked and served straightaway with lashings of butter - yummy!) A representative of Environ has told the council that the ground we have purchased

from Severn Trent (on Taverner Drive) is suitable for allotments and could provide as many as 30. This is just one of the options under consideration by the council but we would like to hear from anyone who would be interested in having an allotment in this area. Please contact the parish office on Station Road or ring Sam (the council Clerk) on 2390167.

## ACCESS FOR ALL

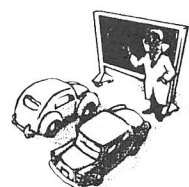
The final part of the Disability Discrimination Act comes into force on 1<sup>st</sup> October 2004. From that date, anyone providing a service will have to address all physical features that make it difficult for disabled people to use their services. They will have to make adjustments to their premises *or* they will need to arrange a "reasonable" alternative way for the service to be provided. The council is already looking to see what changes need to be made to things for which they are responsible and is advising local service providers to carry out their own review in plenty of time to make the necessary alterations.





## Ratby Parish Council

### TRAFFIC CALMING



Due to the unprecedented number of comments by members of the public on the proposed traffic calming scheme for the village, it now appears unlikely that the revised scheme will be presented to the parish council before the January meeting.

The consultants responsible for designing the scheme say it is proving to be quite a challenge to vary the scheme to make it acceptable to the majority of residents while still achieving the original aims. Another reason for the delay is the need to re-consult

with the emergency services, in view of the changes being made, to ensure they still feel able to support the scheme. It is also the intention to carry out further public consultation, but on a reduced level to that carried out earlier in the year. This is likely to be a more localised consultation with the residents who are affected by the scheme and may take the form of a letter with an appropriate extract of the main drawing, showing the changes to the scheme in the vicinity of their property. There will probably also be an invitation to a "mini-exhibition" to discuss any issues they may have as a result of the proposed amendments.

### QUALITY COUNTS!

#### Quality Parish Councils

The council is currently considering what it has to do to meet the criteria for accreditation under a new government initiative for parish (and town) councils to be given *quality status*. This is the latest element in the government's plans to modernise the way local councils are managed - a new Audit regime has already been introduced together with various new funds and grants.

#### A stronger voice...

The government requires a Quality Parish Council:

- To be representative of the whole community
- To be effectively and properly managed
- To be in regular contact with the community
- To work closely with local voluntary groups
- To work in partnership with the "principal authorities" which, in our case, means the borough and county councils.

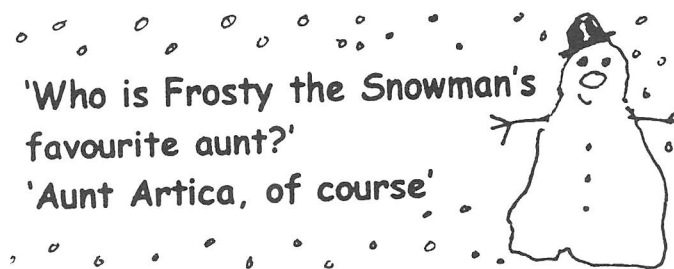


In return for meeting the criteria laid down, Quality status will provide the council with a stronger voice in the decisions that affect people's lives. Among other things, it will give us more say in the planning decisions that affect the village. This will be achieved through the negotiation of a Charter with the borough council, setting out how the principal authorities and the parish council should work together, with some general clauses and others specifically tailored to meet local circumstances.

#### The tests...



As you might expect, there is a very long application form to be completed! In summary there are seven tests that have to be met in order to achieve Quality status. These cover areas such as the constitution of the council, meetings and minutes, audited accounts and communication. (Just to give you an idea of the complicated nature of the process, in the communication area *alone*, nine out of fifteen tests must be met!). There are several areas where our council already meets the standards required but there are also several where we have a lot of work to do. Over the coming months we will be working through *all* the requirements to ensure that we meet the required standards before we make our submission.



'Who is Frosty the Snowman's favourite aunt?'  
'Aunt Artica, of course'

### THE SERVICE GARAGE

MAIN STREET, RATBY  
**M.O.T TESTS**  
**CARS (PETROL and DIESEL)**  
**And**  
**MOTORCYCLES**  
**M.O.T. HOURS 9.00-4.15 Monday-Friday**  
**Closed for lunch 1-2**  
**TELEPHONE 239 4966**



### AN INDEPENDENT PRACTICE

Eye Examinations  
Frames and Lenses at Competitive Prices  
Prescription and Non-RX Sunspecs  
Daily and Monthly Contact Lenses  
New Varilux Panamic Varifocals  
Any Optician's Prescription welcome

**NEW OPENING TIMES**  
**Monday-Friday 9.30-1pm 2-5pm**  
**Closed Wednesday**  
**Saturday 9.30-1pm**

**47 Main Street, Kirby Muxloe**  
**Tel: 0116 239 4288**

**DEADLINE**  
**For FEBRUARY/MARCH**  
**ISSUE 104**

**Friday**  
**Editor 239 3367**  
**Adverts 239 3279**  
**Articles 239 4873**

## RECIPE CHICKEN RISOTTO

### Ingredients

- 25 gr./1 oz butter or margarine
- 1 medium sized onion-chopped
- 1 clove garlic, crushed
- 3 rashers of bacon-chopped
- $\frac{3}{4}$  pint chicken or turkey stock
- 225 gr/8 oz long grain rice
- 1 teaspoon paprika
- 1 green pepper, deseeded and chopped
- 397 gr./14 oz tinned chopped tomatoes
- 225 gr./8 oz cooked chicken or turkey, chopped.
- 1 Tablespoon chopped parsley.

### Method

1. Heat fat in a large saucepan and gently sauté onion, garlic and bacon for 5 minutes
2. Add rice and stir whilst sautéing for 1 minute to thoroughly coat rice.
3. Add stock and paprika.
4. Cover with lid and simmer for 10 minutes.
5. Add pepper and tomatoes, stir to mix.
6. Simmer for 5 minutes
7. Stir in chicken or turkey and heat to boiling point for 3-5 minutes.
8. Serve with parsley sprinkled on top.

Scrivener

('A great recipe for your left over Christmas turkey!' Editor)



**OAKLANDS**  
**RIDING SCHOOL**  
**WE CATER FOR EVERYONE FROM**  
**THE NOVICE TO EXPERIENCED RIDER**  
**All weather riding area**  
**Ring Julie on 238 7570**