



WOT!

About Ratby

PUBLISHED BY RATBY SCOUT GROUP



DREAMING OF A GREEN CHRISTMAS

Christmas seems to have become a festival of consumerism and waste these days. All too easily our environmental aims can end up in the bin with all the wrapping paper, cards and left over food.

But it doesn't have to be like this...there are things we can do, and they don't have to cost a penny...in fact they might even save you money.

Christmas Trees

There is often a debate about whether it is 'greener' to have a real tree which is discarded in January, or an artificial tree which lasts for years.

Well, you could choose either. A good artificial tree may last years, although the manufacturing process may have generated pollution.

A small living tree in a pot could be kept growing for a few years, recovering outdoors until needed again. But if you want a larger real tree you might like to know that they are often grown on marginal land which cannot always sustain other agriculture. They are grown for a few years, helping to soak up carbon dioxide and reduce global warming before being cut down. Try to find a tree which has been locally grown. Don't forget the local council recycling scheme after Christmas. Trees are shredded for compost.

There is a growing trend for fashionable, 'designer' trees. Decorations are themed, perhaps by colour or type of decoration. Think again before you get seduced into it by all those shop displays. Don't throw those decorations away...what could be more wonderful than those familiar baubles, perhaps inherited from your childhood tree, or made by your children. Surely that is the 'real' meaning of Christmas?

If you really can't resist, then give your decorations to a charity sale, or ask if a local group would like them.

Christmas Turkey

If you are planning to eat turkey, then you might consider a free range, organic bird. Yes, it will cost you more, but think of the suffering the commercial birds have endured. They are usually reared in groups of over 2000 in windowless sheds. They are selected to put on weight fast, and given antibiotics.

Rubbish!

At Christmas we produce five times as much waste. So make an effort to recycle when you can. Take your bottles to the bottle bank. There is one at the Sport's Club. Put your paper in the blue recycling bags. Give your cards to charity.

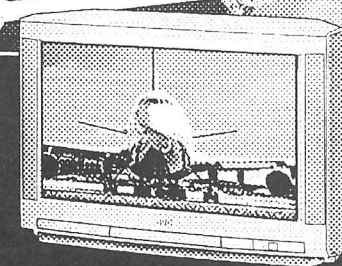
Continued On Page 6

A MERRY CHRISTMAS and A
HAPPY NEW YEAR



EURONICS CENTRES

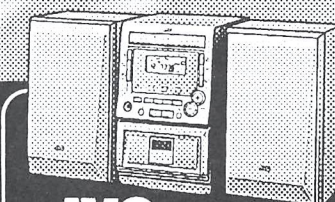
THE ULTIMATE
SOUND & VISION



JVC Nicam Widescreen TV

- 28"/66cm Visible Screen • Auto Aspect Switching
- 2 x 10 Watts Full-Range Speakers • T-V Link
- Fastext • Supplied With Deluxe TV Stand

Model AV28CT1EKBC
449.99



JVC Micro System

- 10 Watts x 2 (at 10% THD)
- Cassette Player • CD Player
- 1-bit D/A Converter • RDS Tune
- Hyper Bass Sound System

Model UX-M3R

99.99

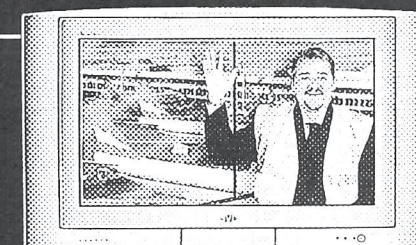
JVC Super VHS VCR

- Super VHS High Resolution • Super VHS ET Recording
- Hi-Fi Stereo With Nicam • VideoPlus+
- Express Programming

Model HR-S5956EK



149.99



JVC Natural Flat Widescreen TV

- 32"/76cm Visible Screen • 100Hz DigiPure Pro
- 2 x 20 Watts Full-Range Speakers • Nicam Stereo
- Advanced Quick Teletext • Supplied With Deluxe TV Stand

Model AV32X25EKGVC

999.99

JVC Compact Super VHS Camcorder

- Digital Photo Capture • Snapshot Mode
- 700x Digital Hyper Zoom
- 2.5" LCD Colour Monitor
- 118 Combinations Of Digital Special Effects And Scene Transition
- Digital Picture Improvement Technology

Model GR-SXM58EK

379.99



RATV

23-27 Station Road, Ratby,
Leicestershire LE6 0JQ
Tel: Leicester (0116) 2394544

We are an independent retailer - with friendly local service and personal attention - but we're also members of EURONICS - Europe's biggest independent electrical buying group, which means we can offer you the very best deals on the highest quality brand names!



- TOP BRANDS AT LOW PRICES
- SPECIAL OFFERS
- LOCAL DELIVERY
- GUARANTEED AFTER SALES SERVICE
- EXPERT STAFF

EURONICS CENTRES

Making your money go further!

RATBY PRE-SCHOOL
CHURCH ROOMS, CHURCH LANE, RATBY
TELEPHONE – MRS JANET SIMMONDS – 07816 592263



The Ratby Pre-School AGM was held on the 24th October at Ratby Primary School, we would like to thank everyone who attended and made it such a good evening, everyone enjoyed the opportunity to have some 'retail therapy'!

Mrs Lindy Anstey and Mr Paul Tuffin, from Ratby Primary School did a small talk on the Pre-Schools links with the Primary School and how it made the transition to the 'big' school as smooth as possible.

There will be the first committee meeting of the new committee at the beginning of December at which the events for the next year will be planned, we welcome all the new committee and look forward to an eventful year ahead.

On Saturday 7th December the children are having their Christmas disco (Pre-School children only) complete with Christmas Hat competition and Santa Claus. We ask all parents to contribute some food to the party, a list is on the Pre-School notice board, please write your name against the item of food that you can bring.

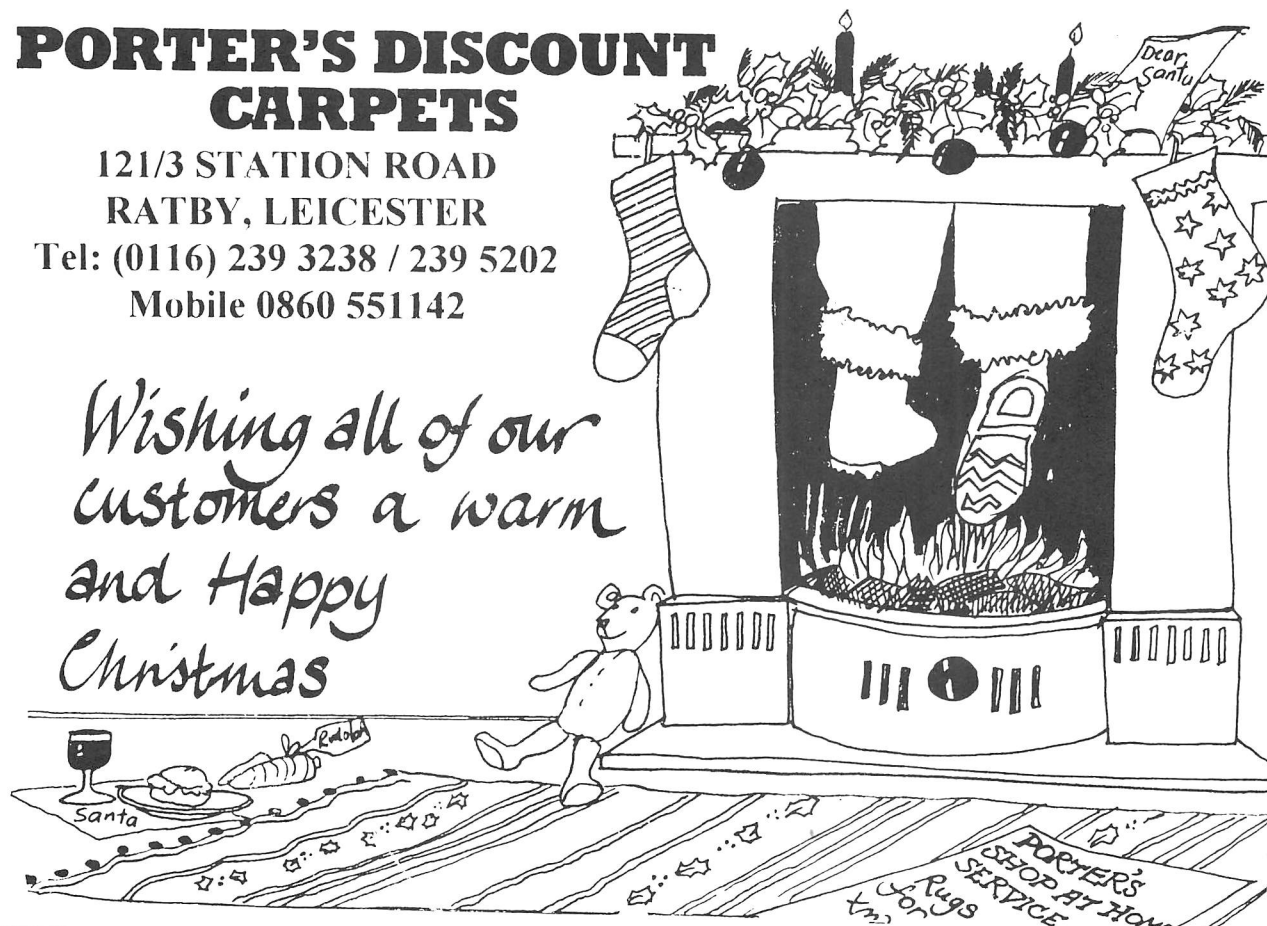
Due to the fact that a number of children start at the Primary School in the new year there are places available at Ratby Pre-School, if you would like your child to attend then please contact Mrs Simmonds on the above number. Children can start at Pre-School on their third birthday, the price is £3.50 per session, sessions are mornings 9.15 – 11.45, afternoons (except Wednesday) 12.45 – 3.15.

RATBY PRE-SCHOOL COMMITTEE

**PORTER'S DISCOUNT
CARPETS**

**121/3 STATION ROAD
RATBY, LEICESTER**
Tel: (0116) 239 3238 / 239 5202
Mobile 0860 551142

*Wishing all of our
customers a warm
and Happy
Christmas*



**Vicar Raises Objection to Sale of
Development Land**

A small part of the housing development along the Burroughs Road currently being proposed by Cawrey Limited is situated on 'glebe land' presently owned by the Diocese of Leicester. The Diocese has therefore been approached for their agreement in principle to sell that glebe land to Cawrey Limited. This agreement would take the form of the developer being granted an option to purchase the land, which could be exercised in the event of planning permission being granted by the Borough Council.

Although the local vicar in these kinds of situations has no right of veto over what is decided he does have a right to make representations. And that is what I have done; in consultation with the churchwardens, I exercised that right in raising objections to the granting of a purchase option to the developer at this time.

It might be helpful at this point to explain what 'glebe land' is and how the Diocese is required to manage it. Up until about 1978 Glebe 'belonged' to the local vicar and the rents that came from the land formed part of the income he had to live on (not much in the case of vicars in Ratby I believe!). In 1978 all Glebe was transferred to the regional church authorities (known as Dioceses) who manage the land and income, so ensuring that vicars in one place don't have a higher stipend income than vicars somewhere else. Because the Church of England is the established church and governed by Queen and parliament, this transfer was effectively made under an Act of Parliament or 'Measure'. Under that Measure each Diocese has a Glebe Committee which is under one simple binding obligation, namely to maximise the annual income and long-term capital value of its Glebe land. It is because of that simple obligation that the Leicester Glebe Committee has to take seriously any approach made by a developer. Where the local vicar objects to any proposed sale, then the Glebe Committee has to obtain the consent of the Church Commissioners in London who look at things from a wider perspective. That is the process that has now been set in motion.

In the end it may be that county and borough planners decide that there should be more development in Ratby. But over the coming months there will be the opportunity for Ratby residents to have a say in what we want for Ratby in the future, for example through the Ratby 'Parish Plan' (if the steering group get enough support to make it happen), through consultation on the borough council's new local plan and through discussions with our local developer, Cawrey Limited. I have made it clear in my objections that I think the church should at this time be making its contribution to those consultations, rather than granting purchase options over glebe land.

**RATBY LOCAL HISTORY
GROUP**

Ghost Stories - As we reported in the last issue of Wot, our September meeting involved three speakers who related to various local ghostly tales and experiences.

This turned out to be such a fascinating subject that we hope to be able to present a feature article on the subject in the next issue.

Our Last Meeting - This was held in the Village Hall on Friday November 29th. Lynn Mellor presented 'A Christmas Box of Customs'. This illustrated talk kept the audience enthralled with explanations of the meanings of traditional Christmas activities. Seasonal refreshments of mince pies and mulled wine were then enjoyed by all. Arthur Stevenson followed on with a talk about, Samuel Deacon, the renowned clockmaker, who was born in Ratby.

Our Next Meeting - will be on Friday 31st January in the Village Hall at 7.30pm. Dennis Green will present Memories of Ratby in the 1930s and Doug Harwood will be discussing Ratby's Enclosure Act

PIP'S PRIVATE HIRE

0116 239 0909

GROBY * RATBY * KIRBY
B'HAM & E. MIDLANDS
AIRPORTS
LOCAL and DISTANCE
OAP TOKENS



**GAS
APPLIANCE
SERVICES**

- Appliance Servicing and Installation
- Breakdown and Repair Services
- Plumbing and Heating Installation
- Kitchen & Bathroom Design and Installation
- Quality Guaranteed by Experienced Engineers



**YOUR DOMESTIC GAS
BOILER SERVICED**

6 SAXONS RISE, RATBY, LEICS. LE6 0NF
■ Tel: 0116 2393662



Letters

To the Editor:
When I moved to Ratby 12 months ago, I didn't know what to expect. I have as a Minister always been a figure in the community, now I was one of many people. The depth of welcome, help and understanding I received was truly wonderful. People say Ratby is a friendly village but it is more than just say, it is a reality. Everyone is willing to help and support without being over the top.
Despite being so close to the city, it has a village feel to it and long may that continue. May I encourage you to do all you can to keep it a close, friendly community, working together.
I have had great neighbours and have found people so natural and friendly, as well as trying to make it a better place.
It is with great sadness that I'm leaving, to a clergy retirement property, as I'm so happy here, but it was a better offer financially and also healthwise, with someone on hand to help on my bad days.
Thank you for your kind welcome to all who helped me!
Hope to see you around.
God Bless you and a Happy Christmas too.
Michael Haighton (Rev)

Dear Wot

For the attention of all my Clients.

It's great to think that Christmas is almost here. Well, I mean, it is my busiest time of the year, almost every home has a pile of goodies just waiting for me!
They call me a villain but I've got a living to make. I only help myself to things that people leave lying around in easy-to-get-at places. Of course I don't believe in hard work so I go for places where windows or doors are left unlocked or insecure.
Contrary to popular thinking I am not an expert locksmith and I try to avoid houses with window and patio doors that are fitted with low-cost security locks. People who fit extra security devices make my life hard for me, they really are a nuisance.
It does not make my life easier if secure deadlocks, which can only be opened with a key, are fitted to all outside doors as well. I mean, even if I get in via another route I can't get out easily with lots of large valuables.
My worst nightmare is the homes that are fitted with all of the above plus things like door chains and viewers. Added to these, security lights and alarm systems give me more problems than enough.

But it won't happen - Will it?

Have a Happy Christmas - See you soon!

Jack the Lad

Editors note:- There is no doubt that extra security devices are well worth fitting and they also help to give peace of mind. There are various leaflets etc. available through from the Police or our local Neighbourhood Watch Group. You can also go along to see PC228 Varney at one of his surgeries for advice, (see dates posted at the Parish Council Offices).
Or contact the Neighbourhood Watch on 2394450

**DEADLINE FOR
FEBRUARY/MARCH 2003
ISSUE**

FRIDAY 17th JANUARY

PARISH PLAN STEERING GROUP

Residents of Ratby may have been curious about people walking around the streets with bemused looks on their faces and struggling to make notes on a large piece of paper on which was something that looked like a large scale map. Well, even if you didn't here is the explanation.

They are members of the Ratby Parish Plan Steering Group and were engaged in getting information for a Planning for Real 3D map. This map will provide a practical way for residents, and those with business interests, to express their views about Ratby and its social and environmental development. The information will be transferred to another map, which has been stuck to polystyrene tiles. The main buildings and other features are to be large-scale models to provide a caricature representation of the village.

The model will be displayed in a hall in Ratby, early in 2003 so that everyone from the village can place their comment on cards provided and put them on the map. These will then be collated and used to refine a questionnaire that is currently being prepared by the Group.

The Group consists of Ratby residents who attended a meeting in February and others who have joined since then. That meeting agreed to do a Village Appraisal, from which the Parish Plan and subsequently the Planning for Real exercise followed. Elaine Moore was, and still is the driving force behind this initiative but relinquished the Chair after being elected Chair of the Parish Council.

Ken Hunnybun who was the Secretary of the Group was elected chair and Merle Joyce remains the Treasurer of the Group. There is therefore a vacancy for a secretary. David Hulme is doing a grand job on a temporary basis. The main task is taking and circulating the minutes of the meeting. If any one is interested or would like to join the group please get in touch with Ken on 0116 2388354 or Merle on 0116 2393227.

 **OAKLANDS
RIDING SCHOOL**
**WE CATER FOR EVERYONE
FROM THE NOVICE TO
EXPERIENCED RIDER**
All Weather Riding Area
Ring Julie on 238 7570 

**JULIE'S
HAIRDRESSING**
MAIN STREET RATBY

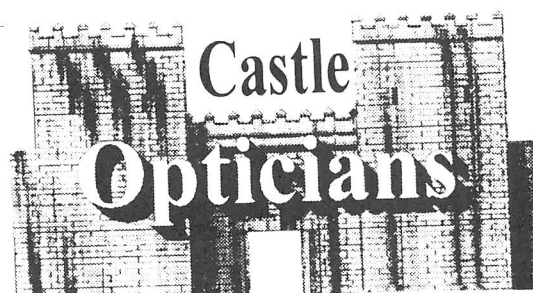
**CELEBRATING 30
YEARS IN THE VILLAGE**
Traditional and Modern Styling
Telephone 239 2406



BRADGATE TWINNING ASSOCIATION

Families entertained twinning partners of all ages from our twinning partners in Plateau Est de Rouen in France for another very successful visit.
A busy program of events was arranged, this included a visit to the Royal Worcester Porcelain factory, a guided tour of Worcester Cathedral and lunch in the Cathedral Refectory.
Families also had time to entertain their visitors for a day and a variety of excursions took place. The visit was drawn to a close with a social evening which featured a light-hearted quiz and refreshments. A good time was had by all.

Currently there are no members in Ratby. If you are interested in getting involved please phone;
Robert Hill 0116 236 6109



**Castle
Opticians**
AN INDEPENDENT PRACTICE
Eye Examinations
Frames and Lenses at Competitive Prices
Prescription and Non-RX Sunspecs
Daily and Monthly Contact Lenses
New Varilux Panamic Varifocals
Any Optician's Prescription welcome

NEW OPENING TIMES
Monday-Friday 9.30-1pm 2-5pm
Closed Wednesday
Saturday 9.30-1pm

47 Main Street, Kirby Muxloe
Tel: 0116 239 4288

L **MELSWAY**
DRIVING SCHOOL

*BEST WISHES for CHRISTMAS
and A HAPPY NEW YEAR
from MEL to all past, present and future clients*

Telephone 238 6149 3 Barton Close, Ratby.

**Accountancy, Payroll & Book Keeping
For The Self Employed or
Small Business.**

Self Assessment Tax Returns, Vat, Computerised Payroll
Accounts & Book Keeping

Confidential Service, Reasonable Fees
No Job too Small

TEL. 01530 230 870

RATBY PHARMACY
58 MAIN STREET
LE6 0LL
Tel. (0116) 239 3139

**DISPENSING, FAMILY HEALTH CARE
and ADVICE, PHOTOGRAPHIC DEV.**

***OPEN ; Mon.-Fri. 9am -1pm, 2pm-6pm*
Saturdays 9am-12.30pm**

**COLLECTION of PRESCRIPTIONS from
L.F.E. and GLENFIELD SURGERIES**

QUALIFIED VISITING CHIROPODIST
Peter S Comley MSSCh. MBChA



Markfield 01530 244887
24 Hour Ansaphone

Offers a Convenient & Professional Service
Registered Member of the
British Chiropody Association

A.H. COLEY
Plumbing and Heating Repairs
New Installations, Bathrooms, Showers

For a full range of Services contact;
4 Saxons Rise
RATBY LE6 0NF

Telephone 239 4277

THE SERVICE GARAGE

MAIN
M
CARS (PI
MO
M.O.T. HOU
Cl
TEL

STREET, RATBY
L.O.T TESTS
PETROL and DIESEL)
And
MOTORCYCLES
S 9.00-4.15 Monday-Friday
used for lunch 1-2
EPHONE 239 4966

GREEN CHRISTMAS

Holly and Ivy....and other Greenery.

Instead of all those commercial decorations, why not bring in greenery from your own garden? The prunings from conifers and other evergreens can look just as good.

Please don't cut holly from the wild, it is fairly cheap to buy from the market or nursery. I don't think anyone would object to your carefully taking some ivy from a hedgerow along a public footpath. If you need shrubs for your garden why not plant a couple of slow-growing hollies?

Parcel Wrapping

Did you know that adhesive tape is not bio-degradable? You could use ribbon, scraps of wool or attractive cord to tie up your parcels instead. Imagine... no more frustration at losing the end of the tape! Ribbons and cord can be used again too. Save all your wrapping paper. Some could be used again, or why not donate it to your local playgroup for collage?

Or keep it for your children to make paper chains with next year.

Cards

We know some people who send each other the same card year after year. Perhaps that sounds a bit 'scrooge' to most of us, and it doesn't help to keep the Post Office in business. You could send e cards to friends on the Internet. Try making your own from last years cards or wrapping paper. Don't forget to save the cards for recycling. Julie's Hairdressing, the local school and stores such as Boots in town all collect them most years.



RECIPE MINCEMEAT FINGERS

Ingredients

200 gr (7 oz) self raising flour
170 gr (6 oz) soft brown sugar
170 gr (6 oz) firm margarine
115 gr (4 oz) rolled oats
Approx. 230 gr (8 oz) mincemeat

Method

1. Light oven-180c /350 F/ Gas 4
2. Grease a Swiss roll tin, 12 ins. By 8 ins.
3. Mix flour and fat until like breadcrumbs
4. Stir in sugar and oats. Mix well
5. Put a good half of the mixture on to prepared tin.
6. Spread a layer of mincemeat evenly over mixture.
7. Cover with remaining mixture and press down to level.
8. Bake for 45 minutes
9. Cut into fingers when cold.

Scrivener

HERE WE COME A WASSAILING


The Anglo-Saxons used 'Waes hal!' as an everyday greeting meaning 'be healthy.' Guests would be welcomed with a goblet of wine, or horn of ale. From this origin the greeting evolved into a toast. Spiced ale or punch was used to toast someone's health on special occasions. It was often drunk from a 'wassail bowi' whilst singing songs at Christmas and New Year celebrations.

In some parts of the country it was the custom to wassail fruit trees and so ensure a good crop in the coming year. Cider was poured on the roots, and toast hung in the branches. This may be the origin of the term 'toast' It was hoped that robins would later eat the toast as this was considered lucky.

The 'Wassailers' sang traditional songs whilst passing round the wassail bowi and supping the mulled cider or punch.

*'Here's to thee, old apple tree,
Whence thou mayst bud
And whence thou mayst blow!
And whence thou mayst bear apples enow!
Hats full! Caps full!
Bushei-bushei-sacks full,
And my pockets full too! Huzza!*




Community College
Groby

**SPRING PROGRAMME
RATBY VILLAGE HALL**

Keep Fit for Over 60's	Tues	13wks	11-12.00pm	£19.95	3 Dec
Active for Health	Tues	11wks	12.15-1.15pm	FREE	7 Jan
Comps for Abs Begg	Fri	6 wks	12-2.00pm	FREE	7 Mar

All enquires for the above courses to be made to:
Ratby Rd., Groby, Leic LE6 0GE
Telephone: 0116 2874725

RATBY VILLAGE EVENTS DIARY

The following listings of events through into February 2003 include some updated details which have now been made known to the WOT team.
Please watch the various local notices and posters for more details.

DATE & TIME	EVENT	ORGANISERS	VENUE	TEL No
DECEMBER				
Sat 7 th 11.00am	Christmas Disco (Pre School Children Only)	Pre School Group	Church Rooms	2390661
Wed 11 th 7.45pm	Christmas Party	Women's Institute	Village Hall	2387139
Sun 15 th 6.00pm	Carol Service	Methodist Church	Chapel	2394432
Mon 16 th 1.30pm	Young Families Christmas Special	Parish Church	Parish Church	2393009
Mon 16 th 1 Week	Xmas Windows Competition	Parish Council	Whole Village	2390167
Wed 18 th 7.30pm	Carols Around the Tree	Parish Council	School Yard	2390167
Sun 22 nd 6.00pm	Carols by Candlelight	Parish Church	Parish Church	2393009
Tues 24 th 4.30pm	All Age Carol Service	Parish Church	Parish Church	2393009
Tues 24 th 11.30pm	Midnight Communion	Parish Church	Parish Church	2393009
JANUARY				
Sat 18 th 7.30pm	Ratby Co-op Band New Year Concert	Parish Church & Band	Parish Church	2393009
Tues 21 st 8.00pm	Himalayan Trek Audio Visual Talk	Village Society	Village Hall	2387240
Fri 31 st 7.30pm	Memories of Ratby in the 1930s plus Ratby's Enclosure Act	History Group	Village Hall	2394168
FEBRUARY				
Sat 15 th 10.00am	Coffee Morning & Nearly New Sale	Methodist Church	Chapel	2394432
Tues 18 th 8.00pm	AGM & Supper	Village Society	Village Hall	2387240

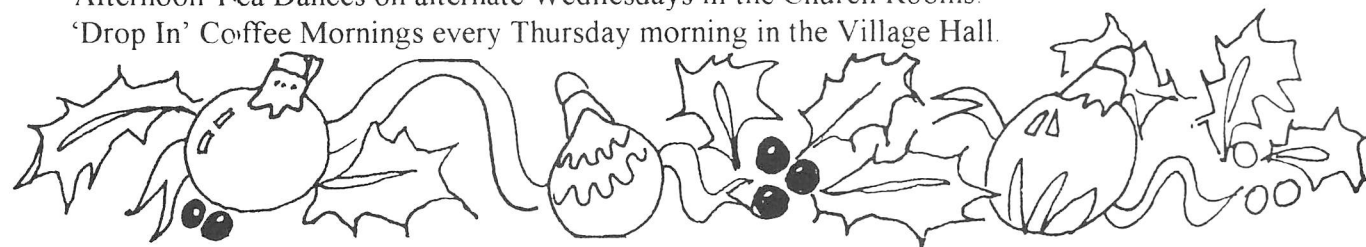
Other regular Village events include :-

Bingo on Monday evenings in the Village Hall

Indoor Carpet Bowls on Wednesday afternoons from September to April in the Village Hall.

Afternoon Tea Dances on alternate Wednesdays in the Church Rooms.

'Drop In' Coffee Mornings every Thursday morning in the Village Hall.



Mobile Phone Top-Up
Cards now available

VODAPHONE
CELLNET
T MOBILE
ORANGE

Going Abroad? Don't
forget we can offer
the following

Travel Insurance
Foreign Currency
E111 Medical Forms

Remember you can cash
cheques and make deposits
for these Banks at your
local Post Office

LLOYDS TSB
A & L GIROBANK

RATBY
POST
OFFICE
Main Street
Ratby
239 3001

HAPPY CHRISTMAS and A PROSPEROUS NEW YEAR

Ratby Parish Council

SNIPPETS AND UPDATES



There has been a change to the **office opening hours of the Parish Council** office at 13 Station Road. The office will now be open to the public on Tuesday, Wednesday and Thursday between 9.30 am to 2.30 pm or by appointment at any other time.



Our local policeman PC Reg Varney is running a monthly series of **police surgeries** at the parish council office and anyone who has a problem they would like to discuss is welcome to come and talk to him. The surgeries will run from 5 pm to 7pm and the dates booked (so far) are as follows: 13th December, 10th January, 7th February, 7th March, 4th April and 2nd May. Please be understanding if Reg has to cancel any of these – it does sometimes happen that his shifts or duties are changed at the last minute.



The long-awaited **skateboard park** is still awaited! The good news is that we now have sufficient funding to provide a decent skatepark and young people are helping us decide what equipment we should have. Insurance is also no longer a problem. However, two very significant areas have still to be cleared. The first is the environment as such activities create noise and we must ensure that what we provide is acceptable and the second is health and safety as there are new European standards that have to be met.



Please remember that if you have local news that you would like to see in the Leicester Mercury to contact Elaine Moore (2394737). This can range from reports of meetings or activities held by clubs or groups to a personal achievement you would like to share. It cannot be guaranteed that all stories will appear and the Leicester Mercury does have the right to edit but let's **keep Ratby in the news!**

NOTICE BOARDS

Sad but true – for reasons best known to themselves, someone is removing material from village notice boards and one in particular is frequently stripped completely. Why? These boards are a way of *any* village organisation publicising what they are doing – they are not just for the use of the parish council. So if it is someone with a grudge against us, please remember that you are penalising other groups in

the village too. We do ask that if anyone sees the culprit that you ask them to stop or inform Kathryn, our clerk, at the parish office. We do not want to have to take more formal action but, on the other hand, we need to do all we can to stop this pettiness.



PEAR TREE FARM

John Cawrey is proceeding with his proposals to build houses on the land he owns at Pear Tree Farm.

In order for a masterplan to be produced that takes into account the views of local residents, Mr Cawrey will be holding a series of meetings over the next few months at which his ideas can be discussed in more detail and people can express their opinions as to how the development could proceed and to identify the facilities most urgently needed by the village.

An impartial chairman will run the meetings and people being invited include residents of the village plus representatives of the church,

chapel, parish council, proprietors of local businesses and, of course, the Friends of Ratby. Members of the parish council will be attending these meetings. This does not mean we are supporting Mr Cawrey, it merely means we want *all* the facts and are fully aware of what is being proposed. We do understand the concerns of those who oppose the development but the council represents the whole village and it is our duty to keep abreast of what is in the proposals. As one councillor has already said about our attendance, "we're damned if we do and we're damned if we don't!"



Ratby Parish Council



Merry Christmas and a Happy New Year

There will be CAROL SINGING with the Ratby Co-operative Band on WEDNESDAY 18TH DECEMBER round the Christmas tree by the Village Hall.



There will be a FESTIVE WINDOW competition during the week starting Monday 16th December. There will be two categories – for homes and businesses. Why not trim up and see if you can win a prize? Enter at the Parish Council office (or take a chance on being nominated by our spies...)



TRAFFIC AND PARKING

By the time you read this it is to be hoped that the road works on Main Street have long been finished! We know that it was an inconvenience for many drivers (to say nothing of the over-enthusiasm by workers that led to a power cut for several hours!) but it is all part of the safe routes to school scheme and surely nobody could say that the previous narrow, uneven pavements helped the safety of the children in any way. The petition for some form of traffic calming in the approach to the school along Groby Road and Main Street was acknowledged many months ago and we were told that this was in the reserve scheme for funding. A representative of

the County Council is coming to talk to us at our December meeting, although no promises are being made...

The Taverner Drive roundabout has long been a bone of contention and, at times, downright hilarity, especially when County Council representatives make statements along the lines of "there is nothing wrong with the design". Following several discussions and a site visit County Council officials have now agreed to review this properly, but as it is not an accident black spot it will not be a priority. Other projects (parking in Chapel Lane etc) are still ongoing.

HELP US TO HELP YOU

Over a year ago we wrote to all residents to outline the problems with regard to vandalism in the two recreation areas at Burroughs Road and Ferndale Drive. Sadly, the position is not much improved and our maintenance man frequently needs to spend his time making repairs to play equipment, as it is neither realistic nor appropriate to make an insurance claim in every case. Much of the damage is relatively minor (broken swings or bolts removed etc) but it does mean that equipment has to be placed out of bounds if parts are required or the ride is dangerous.



In the next financial year we are hoping to set up a project to develop both existing areas into proper community parks and there also needs to be a new recreation area at Brookvale. This project could provide better facilities including seats, more play equipment

and flower beds etc. Grants are available but we would also need the help of the community, hence the title "Community Parks" – something developed *with* the community *for* the community.

However, for any of these schemes to be a success we need to try and put a stop to the ongoing vandalism. One idea is for monitored closed circuit television (CCTV) to be installed, first of all at Ferndale. Our investigations lead us to think this could be worthwhile but in order to be of use there needs to be sufficient light to see the camera images. We therefore need to have lighting in the park area and although it is possible to position the light so that it does not shine directly into anyone's home, we understand there will be concerns. We need to obtain planning permission in order to proceed and residents who will be affected will be consulted in the proper manner.

RATBY

NEIGHBOURHOOD WATCH

Doorstep Sellers are again causing major concern in Ratby. Everybody needs to watch out and be on their guard against bogus ones and keep to the following points.

- 1) PLEASE, PLEASE, DO NOT part with money to doorstep traders prior to work being carried out to your total satisfaction.
- 2) DO NOT commit yourself to anything until you have compared prices from other sources.
- 3) If at any time you feel threatened by a sales person, ask them to leave your premises. If they don't then CONTACT THE POLICE.

If you know of a vulnerable person living close by then please help them to protect themselves against crime.

A pamphlet on the subject of Bogus Callers is available from the Neighbourhood Watch notice board in the Library foyer.

Also in this edition is a letter from 'Jack the Lad', please read it.

PABARI'S RATBY NEWS

5 STATION ROAD RATBY
0116 239 3287

For the Largest Selection in Ratby of
BEERS WINES and Spirits

**A VAST CHOICE OF CONFECTIONERY &
SOFT DRINKS**

**A LARGE VARIETY OF GREETING CARDS,
WRAPPING PAPER and STATIONERY**

**NEWSPAPERS and MAGAZINES
DELIVERED TO YOUR DOOR DAILY**

**We are Agents for
SKETCHLEY DRY CLEANING**

Video rental and Photocopying
OPEN Monday-Friday 6.15-1pm. 2.30-10pm
Saturday 6.15-10pm
Sunday 7.30-2pm. 7pm-9pm

RATBY VILLAGE SOCIETY

At the October meeting a most enlightening talk on the East Midlands Air Support Unit (the police helicopter operation) was given by Mr Mike Dunn, who after serving 31 years in the Police Service is now the civilian controller of the unit based at Husband's Bosworth.

For optimum economy the counties of Leicestershire, Northamptonshire and Warwickshire combined to form the unit, which was set up in 1994, initially fully funded by a Treasury grant.

The present aircraft, the only one capable of performing to the stringent requirements, is a German built EC 1351 fitted with Rolls Royce engines, equipped with electronic mapping linked to video cameras, heat seeking devices, loud hailer and searchlight.

Being in a central location it can respond to a call from any point in the three counties within a maximum of ten minutes. The crew of four consists of the controller or his deputy, a pilot, all of which are former armed services personnel, and two police officers to navigate and operate the equipment. Their main function is to direct the police on the ground to the fugitive criminals. They are also used on occasion as an air ambulance or in tracking the whereabouts of a 'wandering' person. In the latter circumstance the crew can do the work of 50 police on the ground in a fraction of the time. All in all it is a highly cost effective service.



Are you involved with RATBY AC?

Seen in the Angling Times of October 15th.
Ratby AC, Makins, Phase 1 Lake 4

- | | |
|---|---------|
| 1 | D Lanni |
| 2 | B Hill |
| 3 | S Lane. |



Do we have a fishing club in the village?

PICTURE FRAMING

LOCAL BESPOKE

PICTURE FRAMING SERVICE

**FREE HOME COLLECTION, DESIGN
AND DELIVERY**

GALLERY STANDARD

at AFFORDABLE PRICES

CALL CHRIS on 0116 287 0432 ANY TIME