



WOT!



About Ratby

PUBLISHED BY RATBY SCOUT GROUP

MEDIEVAL MAGIC

Great fun was had by all at Ratby Church Garden Fete, held in the Rectory Garden. Stalls and attractions all had a medieval theme, such as 'the Stocks,' the Banqueting Hall, where tea and cakes could be enjoyed, 'the Village Pond fishing game, and of course, 'Friar's Tuck,' pictured below.

We were entertained by Ratby Band, and 2Bee Dance Group.

Young people from Ratby Scout group performed a 'mock Medieval Combat' wearing specially created costumes and bearing ferocious weapons and shields.



Ratby Scout Group's Medieval Knights
Kitted out by Ray Lander



Medieval Hot Dogs at Friar Tuck's Tent

1st RATBY SCOUTS BARBEQUE

Come along and join us for our summer barbeque. At the Church Rooms
On Saturday 6th August 2005 7pm-11pm
50p Admittance * Burgers / Hotdogs £1.00 each. ** Bring your own drinks



 Electrolux

Looking good for Style and Value!



ELECTROLUX

Fridge Freezer

- 149/104 Litres (5.3/3.7 cu.ft) Capacity
- 2 Adjustable Wire Shelves In Fridge
- 3 Full Width & 1 Half Depth Freezer Drawers
- Dairy Compartment
- 2 Half Width Salad Drawers
- Dimensions: H 1660mm x W 495mm x D 600mm

Model ER7525B

£259.99



£159.99

ELECTROLUX

Upright Freezer

- 117 Litres (4.1 cu.ft) Capacity
- 3 Freezer Compartments
- Fast Freeze Function
- Pull Out Ice Tray
- Easy Installation With 2 Front Levelling Feet
- Dimensions: H 850mm x W 550mm x D 600mm

Model EU1241T



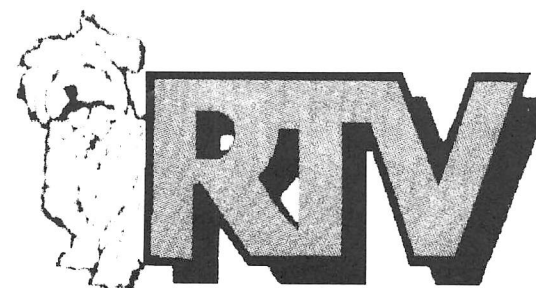
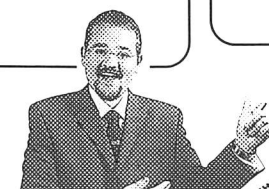
ELECTROLUX

Larder Fridge

- 159 Litres (5.6 cu.ft) Capacity
- 2 Main Shelves
- Covered Dairy Compartment
- 2 Clear Salad Drawers With Glass Cover
- 2 Full Width Door Storage Shelves
- Dimensions: H 850mm x W 550mm x D 600mm

Model ER1641T

£129.99



23-27 Station Road, Ratby,
Leicestershire LE6 0JQ
Tel: 0116 2394544

We are an independent retailer – with friendly local service and personal attention – but we're also members of EURONICS – Europe's biggest independent electrical buying group, which means we can offer you the very best deals on the highest quality brand names!

EURONICS

EURONICS
CUSTOMER

- Low Prices
- Top Brands
- Special Offers
- Local Delivery
- After Sales Service
- Helpful Staff
- Expert Advice

EURONICS CENTRES

Making your money go further!

RATBY LIBRARY

Building work on Ratby's new library is progressing well. The architect-designed, purpose built, brick building looks attractive, and is living up to expectations. The interior will be light and airy, and after fitting out, the library will hopefully be ready to open early to mid September. Data gathered from the questionnaires completed by Ratby residents has helped to shape the services that will be available

As well as books in standard and large print, the library will offer 6 public PCs, newspapers and magazines, a comfortable seating area, an enlarged children's library, DVDs for children, a local studies area, local community information and graphic novels. A story, song and rhyme session, 'Wriggly Readers', for children aged 0 - 3 years old will be held, on the fourth Thursday of the month 2.00 - 2.30pm from October.

The service by volunteers to housebound people, who are unable to get to the library, will continue. The new opening hours have been finalised, increasing by an additional 5 hours per week to the following:

Monday 9.30 - 12.30, 2.00 - 7.00

Tuesday closed

Wednesday 2.00 - 7.00

Thursday 9.30 - 12.30, 2.00 - 5.00

Friday closed

Saturday 9.30 - 12.30, 2.00 - 5.00

Comments from either groups or individuals on any aspect of the new library are welcome. Please contact Caroline Drodge, District Community Librarian for Hinckley & Bosworth libraries at Hinckley library. Tel. 01455 635106 or e-mail to cdrodge@leics.gov.uk



HIS and HERS

**LADIES AND GENTS
HAIR DRESSING**

OAPs REDUCED RATES

Appointments not always necessary.

156 STATION ROAD, RATBY

GOLD MEDAL WINNERS

The Ratby Co-operative Band represented Great Britain in the World Music Festival held in Kerkrade, Holland on the 9th July, and is delighted to have returned with the Gold Medal. The 35 strong group competed against bands from all over Europe, and received a standing ovation for two very difficult test pieces played in 30C temperatures.

On the Sunday the Band played in the magnificent Town Hall Square of Venio, sharing with the local Fortissimo Fanfarie Band who were celebrating their 50th Anniversary.

The Band will be showing off their Gold Medal at their next performance, the Summer Brass and Voices Concert, at Groby Community College, on Saturday August 20th. Starting at 7 pm. The evening will also feature The Chantel Choir, The Heart of England Barber Shop Chorus, and Frauenchor Choresang Caecilia from Rachtig, Germany. Tickets are £2 and selling fast! Ring Malcolm on 238 6954 to reserve yours.

RATBY RAMBLES

We apologise for the incorrect phone number in issue 112. To contact Jill Grey, please ring **239 5208**.

Enjoy your rambling!



The Bull's Head

23 Main St

Ratby

0116 2393256

Try our new Evening A la Carte Menu
Featuring home-made dishes, steaks etc.

Served Thurs-Saturday, 6-9pm

2-Course Lunch in our restaurant for just £4.00

Wide selection of traditional main courses,

sweets and home-made puddings

Served Mon-Friday, 12-2pm

Traditional Home-cooked 3-course Sunday Lunch

Served every Sunday, 12-3pm.

Advance booking advisable.

Friday 2nd - Sunday 4th September

Phil & Marny invite you to their

1st Anniversary Beer Festival

Up to 20 Real Ales

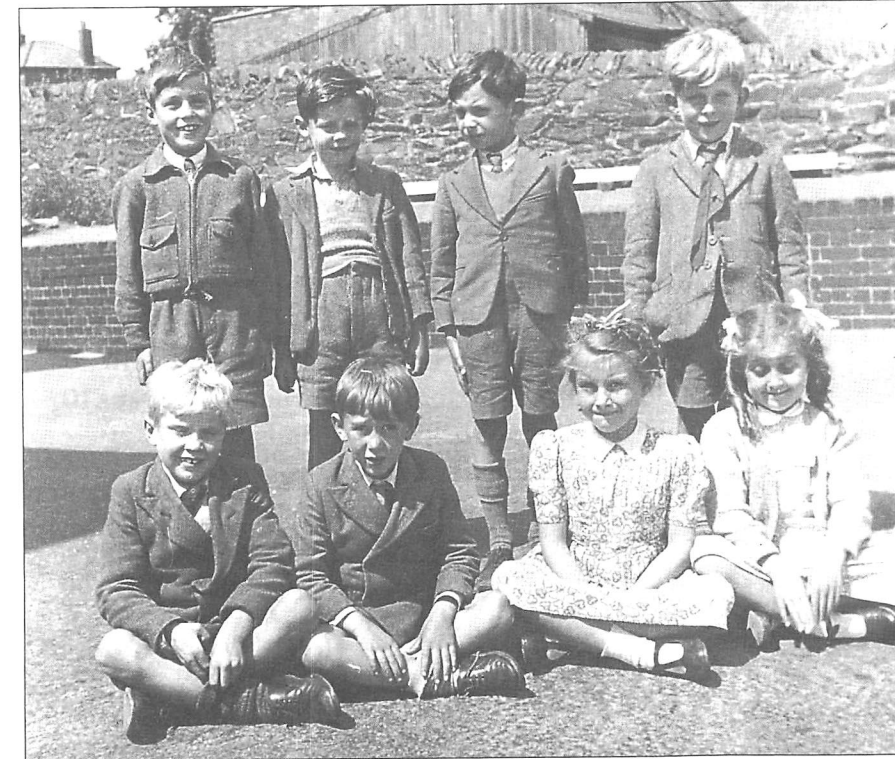
Live Music

Hog Roast & Barbecue

See website for more details coming soon!

WHERE ARE THEY NOW?

In our last issue, Chris Garrett reminisced about his school days in Ratby. Mrs Margaret Green has responded to his request for memories, and sent in a couple of photographs taken by Miss Cufflin, both featuring Chris himself. What we'd like to know is where all the others are now, and who are the un-named ones? We'd love to hear from you if you know!



Back row, Left to right;
Roy Pendery, ? Morris,
Roger Sperry and
Chris Garrett.
Front row, Left to right,
Ernest Marston, unknown,
Diane Marvin, Pauline James.

'Overflow from the dining room'
Chris Garrett on the right.
(note the flowers on the table!)



Mobile Phone Top-Up
Cards now available

**VODAPHONE
CELLNET
T MOBILE**

Going Abroad? Don't
forget we can offer
the following

**Travel Insurance
Foreign Currency
E111 Medical Forms**


Remember you can cash
cheques and make deposits
for these Banks at your
local Post Office

**LLOYDS TSB CO-OP
A & L GIROBANK**

**RATBY
POST
OFFICE
Main Street
Ratby
239 3001**

Dear Sir,
 Ferndale Drive Community Park
 It was interesting to see the Parish Council's Progress Report in the last edition of Wot. It was also interesting to note that there were two omissions from the facts as presented. Firstly, the report failed to show that in addition to grants already received the Parish Council has had to take out a massive £22,500 loan to help pay for the works carried out to date. I understand that this loan is over a two-year period and that it will incur interest of £1300. Does this mean another precept increase I wonder? Secondly, although the Parish Council tell us that Phase One is now complete and the park is fully open, it seems it will be another two years before we will see anything that resembles a completed Community Park. The question has to arise in my mind that, other than the need for some new up-to-date play equipment, what was wrong with the park in the first place?


Name and Address Supplied.



**MELSWAY
DRIVING SCHOOL**

Mel Shipley D.O.T. A.D.I. M.I.A.M.
All ages welcome....and nervous pupils.
Learn to Drive with MELSWAY.

Telephone 238 6149
 3 Barton Close, Ratby.



MOBILE HAIRDRESSER
MEN and WOMEN'S
STYLIST
 QUALIFIED IN
 INDIAN HEAD MASSAGE

Mondays, Tuesdays, Thursdays,
Fridays
9 a.m. - 3 p.m.

LISA 0116 287 1949

LETTERS to the EDITOR



In our last issue we asked for your views on the new Traffic Calming. Here are some replies.

Dear Editor,
 We would like to inform other villagers of the way in which the traffic calming on Groby Road has affected those of us living nearby. We have lived here for 27 years, and seen traffic through the village increase in both volume and speed. We support methods to calm traffic, but feel that the minimal speed reduction, and the noise caused by this speed table brings greater disruption to our lives than the original problem. Although the sound of traffic braking and accelerating is more noticeable, the main cause of noise nuisance is the clanking and banging of unladen vans, lorries, skips and farm vehicles. It is invasive, and impacts significantly on our lives, both inside and outside our homes. We have made our feelings known to both Parish and County Councils, and ask that any of you who are similarly affected write to Mr C Hodges in the Department of Highways at County Hall, or to our Councillor, Rob Fraser. The Department have informed us that they will be carrying out speed readings at the table near our homes. I only hope they provide ear defenders for those taking part!

Kathryn and Michael Byrne.



**MARTIN
TIBBLES**



**PAINTING &
DECORATING
SERVICES**

22 YEARS EXPERIENCE
 EXCELLENT REFERENCES
 FREE ESTIMATES & ADVICE GIVEN

For all your home interior &
 exterior redecoration
 requirements by a qualified
 tradesman, contact **Martin on**

**0116 291 0489
 07855 412945**

**GAS
APPLIANCE
SERVICES**

**YOUR D
BOILER S**

6 SAXONS RISE, R
 Tel: 011

LISA'S L

**A FAST, FRIE
PICKED U**

Small basket £1
 Medium baske
 Large basket £
 PHONE LISA

Appliance Servicing and Installation
 Breakdown and Repair Services
 Plumbing and Heating Installation
 Kitchen & Bathroom Design and Installation
 Quality Guaranteed by Experienced Engineers

**DOMESTIC GAS
SERVICED**

ATBY, LEICS. LE6 0NF
 6 2393662



IRONING SERVICE

**NDLY, RELIABLE SERVICE
P AND DELIVERED FREE**

0
 £15
 0
 on 239 4420 or 07733 105374



11th July

Dear Sir,
 I have to report that personally, my wife and I are severely affected by the noise and vibration caused by vehicles, particularly large ones, traversing the speed table ramp located directly outside our home on Danehill. It does not appear to us that this speed table has any effect on the speed of some vehicles, either approaching or coming off the ramp. We have complained to County Hall in writing, but needless to say to date we have not had the courtesy of a reply. Our Parish Council has been made aware that our already impaired health is suffering because of this problem. Please, please can something be done about it?

Name and Address supplied.

STOP PRESS!

The above correspondent has now received a letter on these issues from The Parish Council. More news in our next issue.

LETTERS TO THE EDITOR
 We welcome letters and articles, but reserve the right to edit them.
 Your name and address must be supplied, but you may ask for them to be withheld.

VE CELEBRATIONS

We are writing to publicly say a big 'THANK YOU' to Tina and Chris Boothby who organised a super afternoon with a fantastic buffet in the union flag bedecked Welfare Hall. FREE drinks were served throughout the event too! We enjoyed a sing along of war time songs led by Ken Hunnybun, and one lady, Audrey, we think sang a beautiful sad song that we hadn't heard before. Win Baillee also led us into more songs, including 'Land of Hope and Glory' and 'There'll always be an England' while we all stood and waved our flags. Thanks to everyone who donated raffle prizes, a total of 33. Looking around the room we could see the folk who had 'gone through' the war, reminiscing and thinking of their beloved partners. It was touching, but they said they'd had a lovely time, singing and talking about the 'old days'

Thank you again Tina and Chris for all your hard work, and giving the villagers a lovely time, and 'time to think.'

Gwen and Roy H

MEMORIES

We'd love to hear some of those memories! Ring Sue on 239 4873. Leave a message and a contact number and I will get back to you.

VE Day Celebrations in the Village Hall



THE FLOODS

The picture and article referring to 'Traffic Calming' in the last issue of 'Wot' prompted thoughts of the same spot in by-gone days, this area then being known as 'between the brooks.' Offered here is an extract from the album 'Personal Memories of Ratby in the 30s'

Trust it may provoke the memories of older Ratbians.

Local Yokel.

Often in winter and early spring, and before the present culvert was excavated, the flood between 'Big Brook' and 'Little Brook' in Station Road would cause much trepidation for transport to and from the village.

Sometimes to a depth of two to three feet in places the road would be submerged from a point ten yards beyond the normal course of the Big Brook on the Kirby Muxloe side, to a point thirty or forty yards beyond Little Brook, towards Ratby.

With the then established bus route Ratby to Leicester being via a sharp left turn at Kirby Corner, Glenfield Turn and on to All Saints Road Terminal, the floods caused great difficulty for the buses of Astill and Jordan and Midland Red. (service 634) Under those circumstances, a bus driver, having successfully negotiated the floods on the journey into Leicester, would, on the return run to Ratby need to consider whether or not the floods would have risen since his last journey through, and should he again risk getting his bus stuck between the brooks?

What didn't help the driver's dilemma as he rounded Kirby Corner to face the floods again was the large unmissable sign on religious Mr Bowden's hut, which read, 'Prepare ye to meet thy God.' Occasionally the flood did become impassable, and in those circumstances the service would be re-routed via Groby village and the turnpike (now the A50) to join the normal route at Glenfield Turn. Add to all this the probability that upstream Big Brook would flood the Kirby/Desford Road at Baron's Park and that Little Brook would flood the road at Desford Lane bridge in Ratby, the exit or egress to the village at these times was, to say the least, damp!

EDITORIAL NOTE

We can't help thinking that those floods would have been a cheaper method of traffic calming! What a rural scene conjured up in this description of Ratby's past. The new signage at the entrance to the village is one more step in the direction of urbanisation of our community. What were once country lanes now have kerbstones, and we have mini roundabouts, housing estates where Astill's garage and other businesses once stood. It is impossible to stop the inevitable march of time, and it is ironic that people want to live in a 'rural' village, but that their desire causes these changes as traffic and the demand for housing increases.

More memories please! We need an article about those buses!

PABARI'S RATBY NEWS

5 STATION ROAD RATBY
0116 239 3287

For the Largest Selection in Ratby of
BEERS WINES and Spirits

**A VAST CHOICE OF CONFECTIONERY &
SOFT DRINKS**

**A LARGE VARIETY OF GREETING CARDS,
WRAPPING PAPER and STATIONERY**

**NEWSPAPERS and MAGAZINES
DELIVERED TO YOUR DOOR DAILY**

**We are Agents for
SKETCHLEY DRY CLEANING**

Video rental and Photocopying
OPEN Monday-Friday 6.15-1pm. 2.30-10pm
Saturday 6.15-10pm
Sunday 7.30-2pm. 7pm-9pm

Bradgate Home Furnishings

9a Leicester Road Tel 0116 2366803
Anstey
Leicester

Mattresses
Pine & Metal Beds
Mexican Pine
Select A Bed Today
Sleep On It Tonight
Bunks
Wardrobes
Chests
Dining Suites
WE DO MORE
Occasional Furniture
Stock Items Delivered Within 48 HRS
Divans
Shop At Home Service

The Nook Anstey
Ample Free Parking

Our Furniture Comes Fully Assembled
Except Beds & Wardrobes



Ratby Village Society

Unusually there was no meeting in the Village Hall for the May event because a visit to the Sewage Works at Wanlip had been arranged for our education. The few who took advantage of this exercise were met at the gate by two charming lady guides whose wide knowledge of the purification process was imparted in an informal non-technical manner. The input of domestic and storm water drainage is 90% liquid, though much higher when there are heavy rainstorms. Treatment of biodegradable matter is accomplished by means of live bacteria, but such foreign bodies as disposable nappies, cotton buds and other by-products of modern hygiene have to be removed beforehand. The end product of clear water is of high enough standard to be discharged safely into the river Soar.

The regular June meeting welcomed a local resident, Michelle Scowan, an NHS Organ Donor Co-ordinator, who gave an eye opening recital of facts, figures and fallacies relating to this wide-ranging life enhancing service. For instance there are usually 7000 patients awaiting organ transplants, demand (growing) exceeds supply (diminishing) Some die waiting to get on the list, some 400 on the list die before a donor is found. A heart transplant must take place within 4 hours from donor to patient, for a liver it is 8 hours, and a kidney 24 hours.

Not all donations are from deceased, as when a kidney or part of a liver is unselfishly given by a family member. There is a service for bone donations, such as thigh, upper arm or breast bone, and these can be kept up to five years. Even if someone has carried a donor card for years it is the family of the deceased which takes the final decision.

It was a fascinating and heartening insight into this facet of the health service.

The annual July Sunday afternoon outing was foregone in favour of throwing in our support for the Ratby Local History Group's successful visit to Ludlow.

SAINT PLUMBING

Heating & Tiling Services Ltd 214211

* Boilers * Fires * Bathrooms * Central Heating
* Floor & Wall Tiling * Servicing * Breakdown/Repair
* Free Estimates * Emergency Call Outs

Mobile: 07967970005

Tel: 0116 239 4141

LOTTERY BEAR

LOROS lottery members are being offered the opportunity to acquire a free 'collectable' bear in return for making an annual payment of £52 per membership number. The scheme has been so successful that stocks of the bears have run out. Liz Singleton, Lottery Manager says 'We always try to keep costs to a minimum, but we really underestimated the wonderful response that we would have to this appeal. We are trying to obtain more bears, but it may be some weeks before we receive them.'

This year's bear is called 'Sharing Bear,' and he will be joined each year by a new addition to the collection. Members paying £52 in advance may claim their free bear.

Ring the Lottery Helpline today on 231 8430.



Box Brownie Photography

Picture this...

Precious memories captured forever at affordable prices. Family celebrations, children's parties, special occasions. High quality, imaginative photography-special commissions welcome.

Looking for something different for your home or a special gift? See my range of mounted/framed original prints.

TEL: Anne Brown 239 5927 or 07868 730123

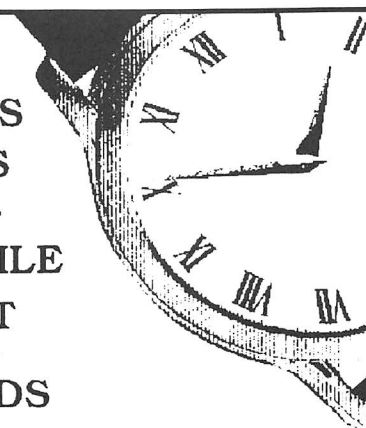
**WATCH
BATTERIES
& STRAPS**

**FITTED WHILE
YOU WAIT**

**ALL BRANDS
SYKES JEWELLERS**

**8 Bradgate Road, Anstey
Tel: 0116 236 2510**

www.clockandwatchrepairs.co.uk



RATBY COMMUNITY ORCHARD

Members and friends enjoyed a village Treasure Hunt, with three different routes around the village. It proved to be a pleasant evening, and we discovered places we didn't know existed. Our reward was a Ploughman's Supper at the Bull's Head, with raffle for Orchard funds. Many thanks to Roy and Gwen Holloway pictured below with the answers to the quiz, for all their hard work in planning a great evening out.



BRADGATE LIONS CLUB

We would like to thank the kind residents of Danehill, Tyler Road, Ferndale Drive and surrounding roads for their kind support during their Easter Float collections on the evenings of 2nd and 3rd of March. The magnificent sum of £304.40 was donated.

This money is now available for distribution to Charities, Groups and deserving causes in Ratby, who would like to claim for support.

Events

Visit our Craft Fair on Saturday August 6th 10.30-4.30 in Kirby Muxloe Village Hall. Tables at £10 each, contact no. below for details.

Old Mobile Phones and Chargers.

We are collecting these to support Water Aid, a charity that provides clean water, sanitation and hygiene education in third world countries. If you have one tucked away in a drawer we will collect it from you.

Please phone Roger Gamble, on 01530 242 912, for information or to donate a phone.

RATBY TOTS TODDLE

On Saturday 18th June enthusiastic committee members arrived at Ratby Pre-school from 8am onwards to start setting up for the first "Ratby Tots Toddle". By 9.15am the children had all arrived and they set off together at 9.30am. They walked along a specified route around Cottagers Walk and Danehill that took around 20 minutes. The children all had activity sheets on which they collected details of shapes and colours that had been placed at intervals along the walk early that morning by committee members. On returning to pre-school all children and adults were given a free drink of squash and invited to join in the fun at a number of additional activities provided. The event was themed "Footballers & Fairies" and there was a fancy dress parade with prizes.

The garden of the church rooms was decorated with bunting and there were plenty of stalls. There was a coconut shy, sweetie stall, one selling honey and various others where the children could all win prizes just for entering. The most popular proved to be the free bouncy castle and the provision of an ice cream and candy floss van in the car park. The pre-school received a cash donation from Lafarge Aggregates Limited who also provided paper sun hats that proved very useful as it was a very hot day.

The committee would like to thank all the children and adults who took part on the day and those who have pledged donations. All proceeds of the walk will go directly to Ratby Pre-school for new equipment for the children.

RATBY METHODIST CHURCH

We at the 'Chapel' have been remiss recently in contributing to our community magazine. We apologise to its Editor for the lack of social discipline, and promise to do better, for, after all, if we do run out of things to say we have a very good book from which to quote!

It may be of interest to the reader to take a look from our beginnings in Ratby to where we are today, with quotations from an old booklet, 'Methodists in Ratby.'

Records state that the village was 'missioned' by primitive Methodists from Loughborough in 1836. The earliest 'clandestine' meeting place was a cottage in Sills Yard. (to the side and rear of the present Chemist) The society grew and eventually the first 'public' Chapel was established in Church Lane, 'with much irritation from some of the village community.'

Such was the fervour of the members that they literally 'danced in the aisles' as they sang and increased in faith. They were nicknamed 'The Ranters' and while we don't do dancing in the aisles these days, we do occasionally go a touch 'Happy Clappy' when the right tune demands!

About the year 1894 new and larger premises were envisaged, and thanks to the generosity of Mr Henry Copson, the site of the present Chapel, a former allotment, was presented. The new Chapel, our former Sunday school, now a private dwelling, was built.

Eventually, in May, 1911, the foundations of our present Chapel were laid, and the finished building, erected by Shipman and Sons of Ratby was opened in October of that year.

To enter the 21st Century our premises were modernised, and who knows, in a hundred years time someone may record the history of our presently unforeseeable future.

We invite you to visit us on either social or religious occasions, when we would enjoy to share your company. **God Bless.**

We certainly hope that 2105 article will appear in this magazine! Editor.

Porter's Discount Carpets

121/3 STATION ROAD, RATBY

TELEPHONE 239 3238 or 239 5202. MOBILE 07860 551142

QUALITY AT THE
RIGHT PRICE



Laminated Flooring

FREE FITTING
ON ALL CARPETS
EXCEPT REMNANTS



GEORGIAN
CARPETS



ask for it by name!

WE NEED YOU!

We have some spare capacity for advertising.
If you would like to be part of this popular,
well read magazine please get in touch.
See our DEADLINE BOX on page 11

THE SERVICE GARAGE

MAIN STREET, RATBY

M.O.T TESTS

CARS (PETROL and DIESEL)

And

MOTORCYCLES

M.O.T. HOURS 9.00-4.15 Monday-Friday

Closed for lunch 1-2

TELEPHONE 239 4966

SUMMER IN RATBY



Leicester Morris at the Bull's Head in Ratby, June 29th.

Photo courtesy of Hoz Gamble.

BEER FESTIVAL at The Bull's Head....is this a first for Ratby? See page 2.

YOUR LOCAL ELECTRICIAN



Fully Qualified City & Guilds Electrician
Registered with the NICEIC Domestic Installer Scheme

Upgrading Old Fuse Boxes - Rewires - Alarm Systems
New Sockets & Lighting - All Domestic & Commercial Electrics

Call Paul Rumble on: (0116) 2872338
MOBILE: 0798 0911 869 Website: www.pgelectrics.com

RATBY PHARMACY

58 MAIN STREET
LE6 0LL

Tel. (0116) 239 3139

**DISPENSING, FAMILY HEALTH CARE
and ADVICE, PHOTOGRAPHIC DEV.**

OPEN ; Mon.-Fri. 9am -1pm, 2pm-6pm
Saturdays 9am-12.30pm

COLLECTION of PRESCRIPTIONS from
L.F.E. RATBY GROBY GLENFIELD SURGERIES



RATBY NEIGHBOURHOOD WATCH

Acts of vandalism have recently occurred in Ratby. Trees have been uprooted from front gardens; walls damaged and potted plants stolen. This unacceptable behaviour by a few has caused great distress to some residents, but still, in many cases goes unreported.

It is **ESSENTIAL** to report ANY INCIDENT, **OWEVER SMALL** to the Police **WITHOUT DELAY**. Ring in confidence, 222 2222 or leave a message for our Beat Bobby, P.C. Matt Bishop, on his voice mail, 222 2222 0483.

FOUND

Adidas Newcastle Football shirt
No 20, with the name FERGUSON, has
been found at the Allotment in the village.
Phone 239 4873 to claim it.

A.H.COLEY

Plumbing and Heating Repairs
New Installations, Bathrooms, Showers

For a full range of Services contact;
4 Saxons Rise
RATBY LE6 0NF

Telephone 239 4277

JULIE'S HAIRDRESSING

MAIN STREET RATBY

Traditional and Modern Styling

Telephone 239 2406

News from St Philip's and St James

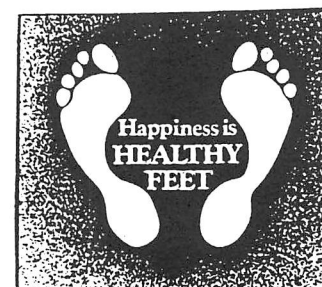
Last Sunday we came to the end of our children's Lighthouse group as they take a break for the holidays. However, 'end' seems a little final at times and yet the word can be important when other letters are added. As we pause for a break, it's a good time to 'mend' a relationship if it needs it. Life's too short to carry grudges or remember upsets. At the same time we might meet new 'friends' whilst we're on holiday and can enjoy getting to know them. Then, of course, there's 'spend', what are we going to do with our time over the next few weeks? Will we spend it wisely getting the most out of everything, or will it be lost in doing nothing? What ever you do during the summer period we all hope you have a 'splendid' time however energetic that may be. To end on another word, don't forget that holiday comes from Holy Day, so remember to give thanks to God for all the good things we can enjoy at this time of year.



DEADLINE OCTOBER/NOVEMBER. ISSUE No 114 FRIDAY 16th SEPTEMBER

Editor 239 3367
Adverts 239 3279
Articles may be sent to 3 Ingle Drived LE6 0NN
Phone 239 4873 / sueboud@hotmail.com

Peter Comley, MSSCh. MBChA.
REGISTERED WITH THE HPC
(Health Professions Council)



Visiting Chiropodist
A Convenient & Professional Home
Treatment Service - with over 10 years experience
Tel: 01530 244887

Ferndale Community Park Group

Sunday August 21st is the **BIG** summer event day for the Park Group with the eagerly awaited **Treasure Hunt**. This will start at The Bulls Head at 4.00pm and will take approx 1.5 hours to complete. Afterwards, weather permitting, there will be a BBQ, (not included in the ticket price) and of course, the bar will be open. Tickets for this family event are priced at £1.50 for adults, in advance-£2.00 on the day and 50p for children, under 5s free. Tickets are available throughout the village and people wishing to take part can purchase them from The Bulls Head, Pabari's, Moore's, Julie's, His and Hers, Nigel Burbage(2387620) and Lorraine Turner(2387479). Prizes include- £25 cash

A meal for 4 at the Bulls Head
A Bottle of Scotch.

For more details about the Park's development log on to <http://www.ratby.info/>



OAKLANDS RIDING SCHOOL

WE CATER FOR EVERYONE FROM
THE NOVICE TO EXPERIENCED RIDER
All weather riding area
Ring Julie on 238 7570

Learn to Drive at

FOWLERS

School of Motoring

All Levels of Tuition From
BEGINNER to MOTORWAY LESSONS
From Young to Old

Contact: **Pete Fowler D.O.T. ADI**
Tel: 0116 238 6165 Mobile: 07760 258700