

APRIL/MAY 2006

ISSUE 117



WOT!

About Ratby

PUBLISHED BY RATBY SCOUT GROUP



GOODBYE and THANK YOU

The Ratby Alliance and Leicester Agency closed its doors for the last time at the end of February. Here follows a 'thank you' from 'the Girls.'

'We would like to thank customers old and new for the many good wishes, cards and gifts given to us during the run-up to the closure of the business on 28th February 2006.

Thanks also to Atul and Bhavna for keeping the business open as long as they possibly could.

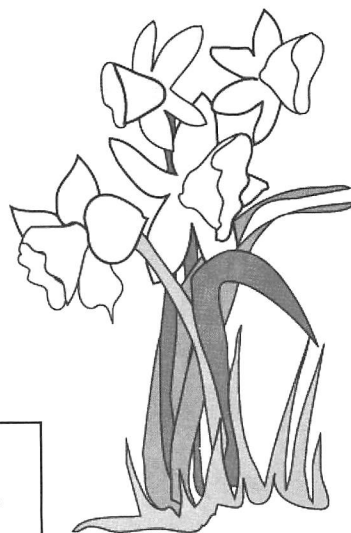
We have all enjoyed our work, as our customers (well almost all of them!) have always been very nice people. It has been a pleasure to help, serve and advise them.

Once again many, many thanks. With all our best wishes, Sandra, Sue, Marion, Elaine and Lynne.

P.S. We are sure we will still see you around the village to say hello to.



Pictured are Atul and Bhavna with the team.



BEST WISHES FOR EASTER

SPRING OFFER



Whilst stocks last

BOSCH

WAA28160

- 1400rpm Spin Speed
- A Energy, A Wash
- B Spin Efficiency
- 5kg Wash Load Capacity
- 15 Programmes
- Half Load
- Quick Wash

NOW £279.99

with this advert

FAST FREE LOCAL DELIVERY

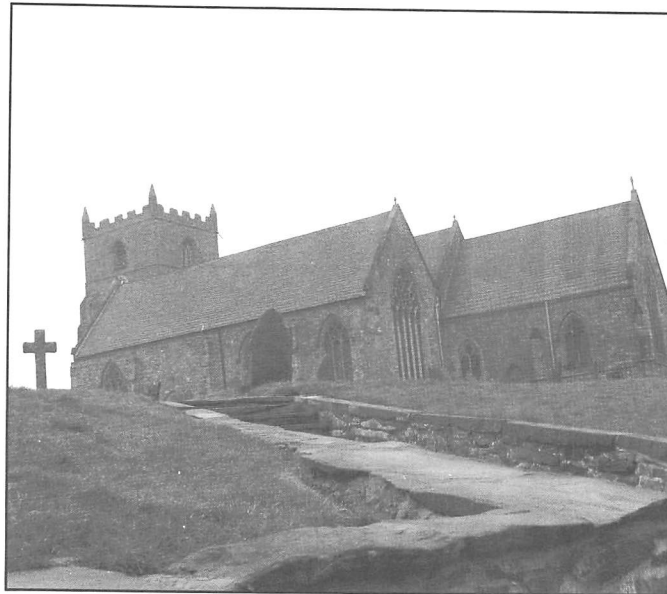
Visit us now and see our
exciting range
of instore
OFFERS



RTV

EURONICS CENTRES
Making your money go further!

23-27 Station Road, Ratby,
Leicestershire LE6 0JQ
Tel:0116 2394544



BIG GARDEN BIRDWATCH

Did you take part in the RSPB Birdwatch on January 28th and 29th this year? Write in and let us know what you saw.

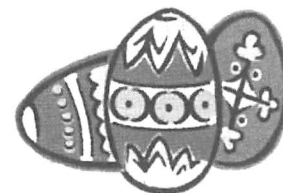
SPRINGWATCH

The cold weather this year probably means spring will be later. Have you taken part in the Springwatch Survey? We'd love to hear from you.

LOOKING FOR A FULFILLING TASK WITH BEAUTIFUL VIEWS?

We are fortunate in Ratby to have several volunteers who help with the mowing of part of our village churchyard. Most of the area is mown by contractors and the Parish Council kindly help the Parish Church with some of the cost of this. But in order to keep the costs down we try to maintain our volunteer team as well. At the moment we are looking for one or two more volunteers to help with the mowing about once a month for approximately 2 hours. Mowing equipment is provided. It's a beautiful environment in which to work, so if you would like to know more, please contact David Willis on 239 0010.

Many thanks



What about it Ratby Folk...it's cheaper than joining a Gym!

Editor



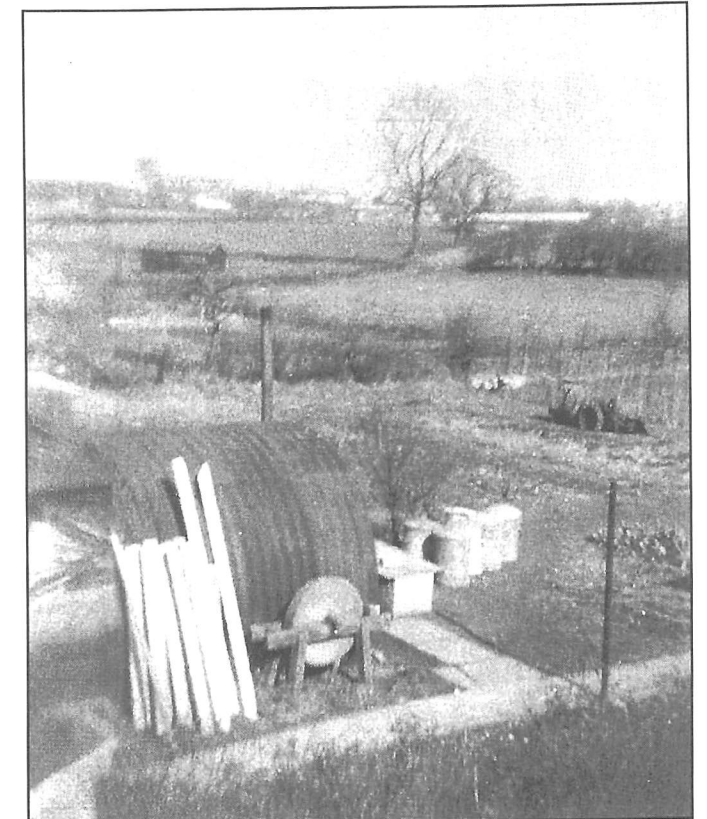
WANTED! SCOUT GROUP MANAGER

1st Ratby Scout Group requires a manager who will help the young people of Ratby achieve their full potential as responsible citizens. The Group Manager's role is to promote the continuity and development of the group whilst supporting the adults who work within the Group.

Can you volunteer an average of two hours per week?

You won't need to have a Scouting background, but good communication and organisational skills are essential. Training is available if required. You will need to be CRB checked.

If you are interested and want more information please call Colin on 0116 239 5187.



1960s RATBY

A Ratby resident has sent in this photograph of Ratby around 1959/1960. It is a view of gardens to the rear of 111 Station Road. Here is Mr Bird's garden, with bins for pig feed visible, and you can spot some pigs in the centre of the picture. Freeman's the butcher's field is to the distant left, and the Church just visible at the top of the picture. Mr Bird employed a Mr Beddin, who lived two doors down, and readers may recall that he would sharpen mowers. 1960 is not so very long ago, and yet there is no sign of the housing estate that was to replace these fields in just a few years time. If the photograph stirs old memories we'd love to hear from you.



Porter's Discount Carpets

121/3 STATION ROAD, RATBY

TELEPHONE 239 3238 or 239 5202. MOBILE 07860 551142

QUALITY AT THE
RIGHT PRICE



Laminated Flooring

FREE FITTING
ON ALL CARPETS
EXCEPT REMNANTS

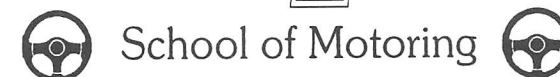


GEORGIAN
CARPETS



Learn to Drive at

FOWLERS



All Levels of Tuition From
BEGINNER to MOTORWAY LESSONS
From Young to Old

Contact: Pete Fowler D.O.T. ADI

Tel: 0116 238 6165 Mobile: 07760 258700

Mobile Phone Top-Up
Cards now available

VODAPHONE
CELLNET
T MOBILE
ORANGE

Going Abroad? Don't
forget we can offer
the following
Travel Insurance
Foreign Currency
E111 Medical Forms

Remember you can cash
cheques and make deposits
for these Banks at your
local Post Office
LLOYDS TSB CO-OP
A & L GIROBANK

RATBY
POST
OFFICE
Main Street
Ratby
239 3001

RATBY PARISH COUNCIL

13 Station Road, Ratby

0116 239 0167

Ferndale Community Park

The Parish Council agreed to a proposal at the meeting held on 7th March 2006 to install 5 items of junior play equipment recommended by the Ferndale Community Park Group: a high space net, a low rotator, an overhead rotator, a 2 bumper seat swing and a double see-saw, cost installed £26,414. An enclosed Multi Sport Ball Court will also be installed, cost £21,000. These items will be sited on the existing hard standing Ball Court area to comply with the Disability Discrimination Act recommendations and for easier site maintenance. The existing Basket Ball posts will be resited next to the tarmac area, near the Teenzone Tower. The tarmac area will not be disturbed.

Landscaping will also be undertaken in the park to meet the criteria for grant funding.

Applications for grant funding have been submitted to help meet the total cost of this project which will be £50,534; the balance will be met from the Council's budget. This project will be subject to successful grant applications and we hope to receive notification in the near future which will enable the project to start before the next summer holidays. Please contact the Parish Office if you wish to see pictures of the items to be installed.

Youth Activities

The Parish Council is in the process of trying to establish a venue for a type of youth café, and various agencies are involved in the venture. We would however like to remind everyone that there are groups already in the village that provide activities for young people of all ages, i.e. Scouts, Kick Boxing and Parent and Toddler Group to name a few. It would be helpful to promote these activities on the Parish Council's website. Please contact me by email: ratbypcouncil@btconnect.com giving the name and brief details of your club or group and a contact telephone number and these will be included on the web site: ratbyparishcouncil.org.uk

Allotments, Taverner Drive

The Parish Council have submitted a planning application to apply for a change of use to allotments and for a pedestrian access point onto the site. The application also includes the provision for 2 car parking spaces for the allotment holders, to be sited behind the field gate on the Totem Pole Field. This was stated as a requirement by the Highways Dept. at County Hall. It is hoped the application will be successful, which will allow the Parish Council to provide another amenity in the village for the residents.

Geraldine Aldwinckle, Parish Clerk

Email: ratbypcouncil@btconnect.com www.ratbyparishcouncil.org.uk



RATBY COMMUNITY ORCHARD

Members spent a Saturday morning in February getting some jobs done at the Orchard. It was too cold to prune the trees, but time was well spent clearing around the trees and mulching.

Totem Pole

Sadly the Totem Pole has rotted below ground, and for health and safety reasons has had to be removed.

We are exploring possibilities of re-instating the Pole.

Information Board

The board for the pond area was damaged by vandals, and is due to be repaired and re-installed on site.

Thanks to the Parish Council and maintenance man Simon for help with the removal of Pole and work on the information board.



**NEIGHBOURHOOD WATCH
STOP VILLAGE CRIME!**

If **YOU** see a crime or act of vandalism being committed ring the police. If urgent, dial 999 on Leicester 222 2222. If it is not reported how can they do anything about it? Don't wait for someone else to report it. Get an incident/crime number so that you know that it has been logged.

A.H. COLEY

Plumbing and Heating Repairs
New Installations, Bathrooms, Showers

For a full range of Services contact;
4 Saxons Rise
RATBY LE6 0NF

RATBY CHEMIST

Major changes in line with Government initiatives have been made at the chemists in Ratby. There is now a private consultation room available at your local chemist.

The room gives you the opportunity to meet with your Pharmacist, Mrs Usha Desai to talk about:-

- ♦ The medicines you are taking
- ♦ What they do
- ♦ How well they work for you
- ♦ How to get the most out of them.

The room has enabled Mrs Desai to start other initiatives:-

Do you want to stop smoking? If so just drop in and join the Stop Smoking Programme.

There is also an Emergency Hormonal Contraception Service available (free for the under 20's) i.e. the Morning After Pill.

The chemist offers a free collection of repeat prescriptions available to all patients from Ratby, Glenfield, Groby, L.F.E. (both Forest House and Hunters lodge medical centres). Finally if required there is a free delivery of prescriptions service.

**ASK OUR PHARMACIST,
YOU'LL BE TAKING GOOD ADVICE.**



MELSWAY DRIVING SCHOOL

Mel Shipley D.O.T. A.D.I. M.I.A.M.
All ages welcome....and nervous pupils.
Learn to Drive with MELSWAY.

Telephone 238 6149
3 Barton Close, Ratby.

RATBY LIBRARY NEWS

FREE BOOKS

Did you know that your child is entitled to free books? At the nine month health check your child will probably have received a canvas Bookstart Bag from the Health Visitor. There are now some new initiatives to carry on from this that are available from your local library.

The next stages are:

Bookstart Plus

- ♦ For children aged 18 to 30 months
This is a red book bag containing stories, leaflets, crayons and paper to share with your child

Treasure Box

- ♦ For children aged 36 to 48 months
This is a box containing stories, leaflets, pencil crayons and sharpener and colouring sheets
It is specifically designed to prepare your child for school

If your child fits within these age brackets then all you have to do is pop into your local library to order one. The packs are totally free and you do not have to be a library member to claim them ... though we do hope that you might want to join after seeing what great stuff the library has to offer. Once your child's pack is available for collection we will call you. All you need is to bring along your child's red health book when you collect it.

MATHS TUITION

Worried about exams coming up? Need some extra help?

One to One Tuition in your own home.

"One off" or regular weekly sessions

Age 13-101 (up to G.C.S.E. Level)

Contact NATALIE TARRY on 0116 2390 638
for more details

Dates for your Diary in April and May

Find out more about

leicestershirevillages.com at a special internet taster session at Groby and Ratby Libraries.

What is Leicestershirevillages.com?

www.leicestershirevillages.com provides each town and village in the county with it's own online community portal. You can use it to find out what's happening in your community, for example there is always lots of information about the library.

You are able to interact with the site at three different levels:

- ✓ You can visit the site and browse the wealth of information that is available
- ✓ By becoming a registered user you can add your own local postings.
- ✓ As a registered user you can request to become your village's webmaster, you will then be able to moderate content and create your own 'local pages' for your community.

Leicestershirevillages.com is an ideal way to promote a local group or organisation

Thursday 13 April 10am-12noon – Ratby Library

~*~

EASTER in the LIBRARY
Wednesday 12 April 11am-12noon
Egg-citing Easter Activities at Ratby Library, Activities for the under 11s

~*~

WRIGGLY READERS

Thursday 27 April – 2 p.m.

Thursday 25 May – 2 p.m.

~*~

~*~

STOP PRESS:

Children's DVDs now £1.50 at Ratby Library



CROW PIE

The name 'CROW PIE' for the village comes from the local tradition of eating crow pie around the time of the STATUTE Fair. This fair, held for the hiring of agricultural labourers was held on land to the rear of The Plough Inn. The 'Statty,' the pathway or jitty which runs from Stamford Street to the Plough was named for the Statute Fair. Here's a recipe we've found in case you want to revive the tradition!

Crow Pie Recipe

1 crow
stuffing of your choice
salt and pepper
shortening
flour
2 Pie crust mixes
2-3 hard-boiled eggs

Stuff the crow. Loosen joints with a knife but do not cut through.

Simmer the crow in a stew-pan, with enough water to cover, until nearly tender, then season with salt and pepper. Remove meat from bones and set aside.

Prepare pie crusts.

Make a medium thick gravy with flour, shortening, and juices in which the crow has cooked and cool.

Line a pie plate with pie crust and line with slices of hard-boiled egg. Place crow meat on top. Pour gravy over the crow. Place second pie dough crust over top.

Bake at 450 degrees for ½ hour.

The Gardener's Hymn

We always sing 'All things bright and beautiful...', but what we never mention is that He made the 'Baddies' too.

'All things spray and swattable,
Disasters great and small.
All things paraquatable,
The Lord God made them all.

The greenfly on the roses,
the maggots in the peas,
Manure that fills our noses,
He also gave us these.

The fungus on the gooseberries,
The club root on the greens
The slugs that eat the lettuce
And chew the aubergines.

The drought that kills the fuchsias,
The frost that nips the bud,
The rain that drowns the seedlings,
The blight that hits the spuds.

The midges and mosquitoes,
The nettles and the weeds.
The pigeons in the greenstuff,
The sparrows on the seeds.

The fly that gets the carrots,
The wasp that eats the plums,
How black the gardener's outlook,
Though green may be his thumbs.

But still we gardener's labour,
Midst vegetables and flowers
And pray what hits our neighbours
Will somehow bypass ours.



HIS and HERS

LADIES AND GENTS HAIR DRESSING

OAPs REDUCED RATES
Appointments not always necessary.

156 STATION ROAD, RATBY
239 4429

GAS
APPLIANCE
SERVICES

- Appliance Servicing and Installation
- Breakdown and Repair Services
- Plumbing and Heating Installation
- Kitchen & Bathroom Design and Installation
- Quality Guaranteed by Experienced Engineers



**YOUR DOMESTIC GAS
BOILER SERVICED**

6 SAXONS RISE, RATBY, LEICS. LE6 0NF
Tel: 0116 2393662



NAME THAT CAR

A Quiz by Les Walton

No.	CLUE	Number of letters
1	Water Hazard	4
2	A victory	7
3	A hot mint	4
4	You need a driver	4
5	Powerful beast	6
6	A lion with a note	4
7	A wanderer	5
8	Cheers to the brave	5
9	Found on a camera	5
10	Gent for companion	6
11	Spanish celebrations	6
12	Chocolate sky high	6
13	Scottish skipper was leader	9
14	All agreed	6
15	Not a Roundhead in sight	8
16	Lily's song	6
17	Dance with sticks and bells	6
18	An Englishman's word	4
19	Known as	2

ARTICLES

If you have sent in copy which is of general interest to readers we will always try to include it. It may be held over for a suitable space, as we have to publish topical items as a priority.

Answers on page 11

WINDMILLCRAFTS



LEICESTER

Specialists in the design & manufacture of childrens quality bespoke timber Playhouse & Wendyhouses

Visit us at

www.windmillcrafts.co.uk

or call for a brochure and a chat on

0773 8215148

PABARI'S RATBY NEWS

5 STATION ROAD RATBY

0116 239 3287

For the Largest Selection in Ratby of
BEERS WINES and Spirits

**A VAST CHOICE OF CONFECTIONERY &
SOFT DRINKS**

**A LARGE VARIETY OF GREETING CARDS,
WRAPPING PAPER and STATIONERY**

**NEWSPAPERS and MAGAZINES
DELIVERED TO YOUR DOOR DAILY**

**We are Agents for
SKETCHLEY DRY CLEANING**

Video rental and Photocopying
OPEN Monday-Friday 6.15-1pm. 2.30-10pm
Saturday 6.15-10pm
Sunday 7.30-2pm. 7pm-9pm

QUIZ ANSWERS

1	FORD	11	FIESTA
2	TRIUMPH	12	GALAXY
3	POLO	13	DISCOVERY
4	GOLF	14	ACCORD
5	JAGUAR	15	CAVALIER
6	CLIO	16	LAGUNA
7	ROVER	17	MORRIS
8	BRAVO	18	BOND
9	FOCUS	19	KA
10	ESCORT		



RATBY SCHOOL REUNION
1976-1988

This will be held on May 19th at the Caterpillar Sports and Social Club in Desford. It's a great opportunity to get together and reminisce about those school days, and in particular the renowned School Productions. Ring John Cavendish for more information on **01445 282 504**

RATBY PHARMACY

58 MAIN STREET

LE6 0LL

Tel. (0116) 239 3139

**DISPENSING, FAMILY HEALTH CARE
and ADVICE, PHOTOGRAPHIC DEV.**

***OPEN ; Mon.-Fri. 9am -1pm, 2pm-6pm*
Saturdays 9am-12.30pm**

**COLLECTION of PRESCRIPTIONS from
L.F.E. RATBY GROBY GLENFIELD SURGERIES**

YOUR LOCAL ELECTRICIAN

PAULS QUALITY ELECTRICS

**Fully Qualified City & Guilds Electrician
Registered with the NICEIC Domestic Installer Scheme**

Upgrading Old Fuse Boxes - Rewires - Alarm Systems
New Sockets & Lighting - All Domestic & Commercial Electrics

Call Paul Rumble on: (0116) 2872338
MOBILE: 0798 0911 869 Website: www.pqelectrics.com

EASTER TRADITIONS

Hot Cross Buns

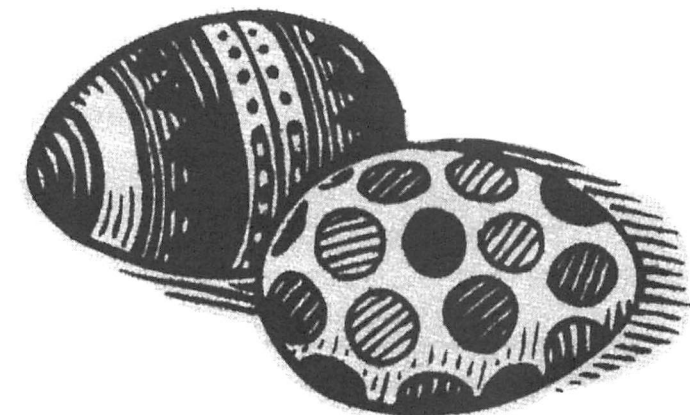
The Egyptians and Greeks ate small cakes or buns in honour of the Goddesses they worshipped.

Buns marked with a cross were eaten by Saxons to honour their Goddess Eostri, and it is thought that the bun represented the moon, and the cross the moon's quarters.

For Christians the cross symbolises the crucifixion.

Pussy Willow

Did you know that picking pussy willow is a tradition in both England and Russia? It is a symbol of the arrival of spring, and it was viewed as good luck to be tapped on the shoulder by a branch.



Easter Bells

The timing of the use of bells at Easter comes from France and Italy. While the gentle pealing of these huge instruments can be heard throughout the year, their songs fall silent on Maundy Thursday—the Thursday before Easter—not to be heard again until Easter Sunday, thus marking the resurrection.

This Easter tradition, too, has an older origin. In many ancient belief systems the period before an equinox or solstice was a time of reflection on the past seasons. This period of silence would then be marked by a joyous celebration of light and sound that told all that the darkness had fled and that new life was coming back into the world.

PHOTOS and MEMORIES

We always welcome photographs and stories about current issues that will interest villagers. Tell us what your group have been doing. Write to us about your memories of Ratby's past, or tell us what you think of changes in the village. Please include name and address, even if you want to remain anonymous.



GOLDEN CHARTER
Pre-paid Funeral Plans

Anstey & District Funeral Services

J.G. Wright

A privately owned firm offering 24-hour personal and dignified service. Day & Night Private Chapels of Rest

Hearse, Cars and Flowers Supplied
Funerals Completely Furnished

58 Bradgate Road, Anstey
Leicester LE7 7AA

Telephone: 0116 234 0548

WATCH
BATTERIES
& STRAPS

FITTED WHILE
YOU WAIT

ALL BRANDS
SYKES JEWELLERS

8 Bradgate Road, Anstey
Tel: 0116 236 2510

www.clockandwatchrepairs.co.uk

FROM OUR VILLAGE POLICEWOMAN

Dear Parishioners,

In the last couple of months a great deal of my time and that of my colleague PC Kelly has been taken up with dealing with problem youths in the village. Recently a group of over twenty youths gathered on Stamford Street near to the Jitty through to the Plough. Damage was caused to personal property and it would appear that a number of youths had been drinking. One arrest was made and several youths warned. I cannot stress enough that I will not tolerate this kind of behaviour and will be dealing with individuals who pursue this route with severity.

Can I please ask you to be considerate if parking outside the chip shop on the main road? There have been a couple of occasions when motorists were parked on the zigzag lines of the pedestrian crossing and further down outside the school. I will consider issuing tickets to any illegally parked vehicles in the future.

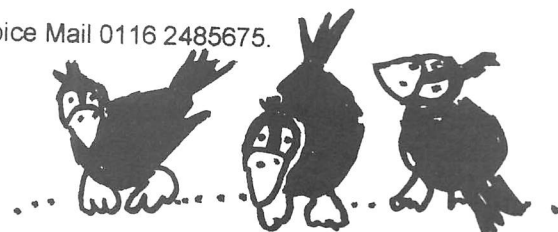
On a positive note, a **Street Surgery** is planned for 22nd March and I hope in the next edition I can report positively on its effects in the village.

I can also now be contacted via the Ratby Parish Council web site as I have a police page.

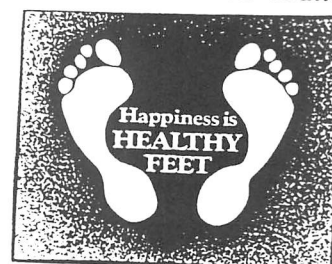
Thank you for reading.

PC 4344 Annette Dowey.

Voice Mail 0116 2485675.



Peter Comley, MSSch. MBChA.
REGISTERED WITH THE HPC
(Health Professions Council)



Visiting Chiropodist
A Convenient & Professional Home
Treatment Service - with over 10 years experience
Tel: 01530 244887

POLICE COMMUNITY SUPPORT OFFICER

For those who haven't met me yet I'm Lee Flavill, PCSO for Neighbourhood 19 which covers Ratby, Groby, Markfield and Stanton. For the last two years I've worked on the New Parks Estate where I've received 2 commendations for outstanding work. A Nottingham lad who grew up on an estate there, I've got broad shoulders and excellent life experience.

The fundamental role of a PCSO is to contribute to the policing of neighbourhoods, primarily through high visibility patrol to reassure the public, increase orderliness in public places and to be accessible to communities and partner agencies working at local level. We are responsible for dealing with, and investigating low level crime such as criminal damage. I feel my main responsibility is to deal with Anti-Social behaviour and the perpetrators, to give people of this neighbourhood a better quality of life.

I look forward to crossing paths with you all soon, and if you have any problems leave me a message on:

Leicester 222 2222, ID Number 6558

ART CLASS

Drawing and painting for all abilities

TUESDAYS 1.30-3.30

RATBY VILLAGE HALL

Friendly and Relaxed

Join any Time

Julia Kent 277 0939

JULIE'S
HAIRDRESSING
MAIN STREET RATBY

Traditional and Modern Styling

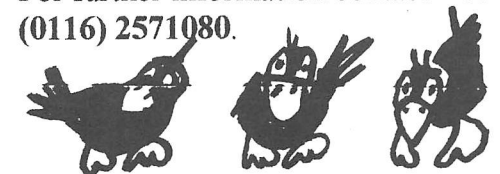
Telephone 239 2406

LEICESTERSHIRE AND THE RUSSIAN WAR

One hundred and fifty years ago, on 30 March 1856, the Treaty of Paris was signed - bringing to a close the Crimean War. For the month of March 2006 the **Record Office for Leicestershire, Leicester and Rutland** will stage an exhibition commemorating the war and telling its story in the words of local men and women who were involved. Entry is free.

This is the war of the Charge of the Light Brigade, of the 'Lady with the Lamp', and of frozen deaths in the trenches outside Sebastopol. It is the war that gave us cardigans, balaclavas, and the Victoria Cross - but this is an exhibition seen through local eyes. Visitors will be able to charge down the 'Valley of Death' at Balaclava with a Sweepstone man. Fight in the fog at Inkerman with Captain Burnaby of Baggrave, and tend the wounded at Florence Nightingale's Scutari Hospital with a surgeon from the Loughborough Dispensary. Hear how our county regiment won its first V.C. and how shabbily that same regiment's wives were treated at home!

For further information contact Robin Jenkins on (0116) 2571080.



**OAKLANDS
RIDING SCHOOL**



WE CATER FOR EVERYONE FROM
THE NOVICE TO EXPERIENCED RIDER

All weather riding area

Ring Julie on 238 7570

THE SERVICE GARAGE

MAIN STREET, RATBY
M.O.T TESTS
CARS (PETROL and DIESEL)

M.O.T. HOURS 9.00-4.15 Monday-Friday

Closed for lunch 1-2

TELEPHONE 239 4966