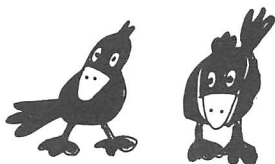




WOT !

About Ratby

PUBLISHED BY RATBY SCOUT GROUP



Ratby Churchyard

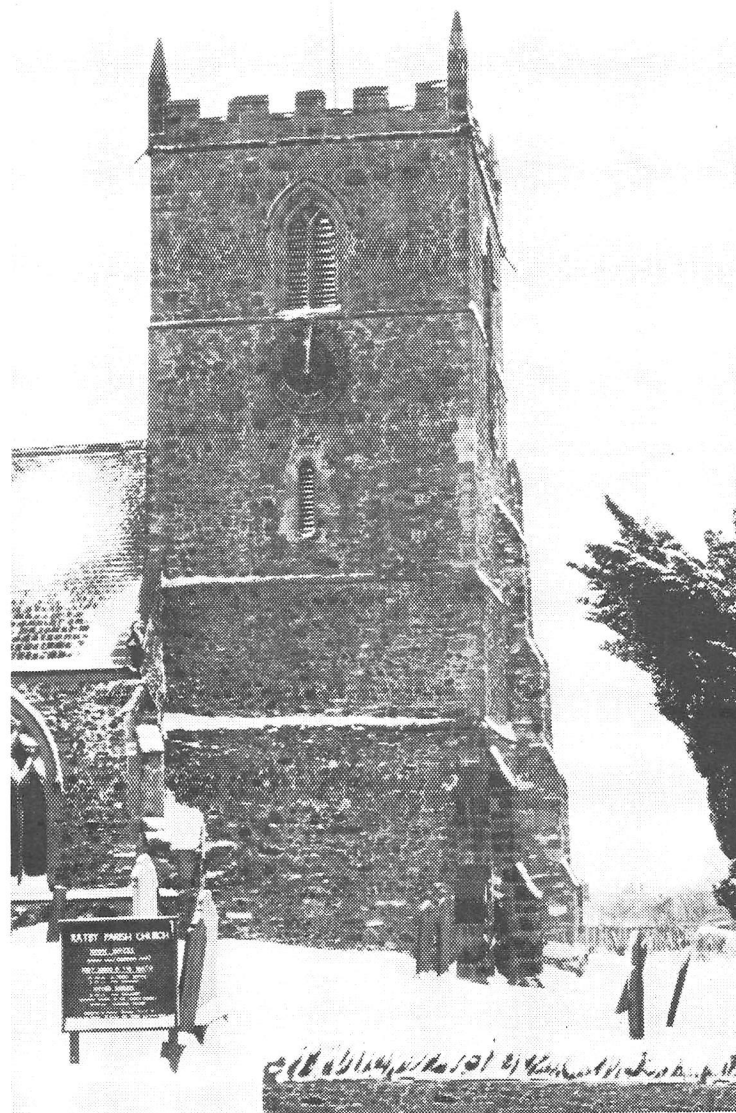
We are fortunate in Ratby to have one of the best-maintained churchyards in the region. This is due in no small part to the dedicated team of volunteers who over the past 10 years or so have transformed the appearance of the churchyard.

Bob Pendery has for many years co-ordinated this team and carried out a large amount of the lawn mowing that is involved. After a long period of service, Bob, however, understandably needs to reduce his personal involvement in this.

To have the whole churchyard mown by contractors would cost over £4,000 a year – and the church council would have difficulty in covering this cost (even with help from other sources like the parish council).

We would welcome anyone who would like to join our dedicated team of volunteers. All that is needed is some spare time, dedication and pushing power! We also need someone who is prepared to co-ordinate the volunteer team of mowers.

Please contact Richard, the Team Rector, if you can help (239 3009)



It is perhaps not a well-known fact that those who are buried in the churchyard are not necessarily connected to the parish church. Burials are often conducted by

LOOKING FOR A BETTER DEAL

ON HOME ENTERTAINMENT AND DOMESTIC APPLIANCES?

Check out your high street for your local Euronics Centre



Lec HITACHI HOOVER BOSCH
THOMSON PHILIPS
ZANUSSI Greda SAMSUNG LG TOSHIBA
Whirlpool Belling TRICITY BENDIX AEG JVC

Friendly, local store service with the personal touch.

If you are looking for Superstore prices but would also like friendly and personal local-store service the answer is a **EURONICS CENTRE**. Get the best of both worlds – call in today to see the terrific range available!



23-27 Station Road, Ratby,
Leicestershire LE6 0JQ

Tel: Leicester (0116) 2394544

Your Local

EURONICS
We are an independent retailer – with friendly local service and personal attention – but we're also members of EURONICS – Europe's biggest independent electrical buying group, which means we can offer you the very best deals on the highest quality brand names!

- TOP BRANDS AT LOW PRICES
- SPECIAL OFFERS
- LOCAL DELIVERY
- GUARANTEED AFTER SALES SERVICE
- EXPERT STAFF

IMPORTANT NOTICE

FOR ALL PARENTS OF PRE-SCHOOL CHILDREN

As from September 2001 it will be illegal to have Infant class sizes of more than 30. This will pose real problems for schools because children do not divide evenly into groups of 30 - for example our projected numbers for 2002 - 2003 is 126 children at Keystage 1 which would mean 4 classes of 30 + 6 children.

As Governors, we could decide to reduce the planned admission number (at present 55), so that we do not run the risk of exceeding the legal number, but we strongly feel that the school should have an inclusive policy which caters for all the children in the village. In order to help our forward planning, therefore, we would urge everybody to register their child at the school as soon as possible even if he/she is not due to start school until 2004. We should be grateful if you could alert any other parents of pre-school children that you know.



*If the oak is out before the ash,
Twill be a summer of set and splash*

*But if the ash is before the oak
Twill be a summer of fire and smoke.*

THE PLOUGH INN

BURROUGHS ROAD, RATBY * Telephone 239 2103

Come in and try our a la carte Menu

Lunchtime offers Monday to Sunday, and Saturday & Sunday evenings.

FREE meal for a child (under 10) with every adult meal.

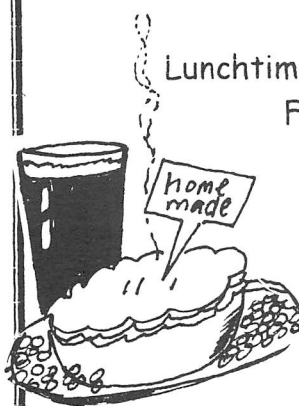
Monday to Friday; 2 Course meal for pensioners
and **NEW 3 COURSE PENSIONERS' MEAL £3.45**

SUNDAY LUNCH

2 Courses for £5.75 * from 12 until 2 pm

MONDAY TO SUNDAY

2 Set Menus at £13 for 2 or £7.50 for 1



PIE, PEAS and a PINT
£3.00

Monday-Friday lunchtimes
Monday-Thursday 6-7 pm

CURRY and CHILLI
Wednesday nights 6-8 pm
only £1.00 !!!

RATBY CO-OPERATIVE BAND

The Band has enjoyed a highly successful contest season resulting in promotion for both Senior and Mid Bands. The Senior to the Premier Division, (the very best Bands in the world) and the Mid Band from 4th to 3rd. A great tribute to the Youth of our village and to Geoff Newman and his team of helpers.

Musik Fest

The 25th Annual Musik Fest is on Friday and Saturday evenings, 11th and 12th May, where a host of local talent will be performing at Groby College.

Visitors from Germany

The 'Musiksug Deutschherren Rachtig 1930 EU' from the Mosel Valley in Germany will be visiting before the Musik Fest. This Band have been our hosts in Germany on several occasions, and many, many Ratby people have been to festivals in this pretty wine village. We are pleased to return their hospitality

Birthday Concert and Blackpool

The Junior and Training Bands have their annual Birthday Concert on 28th April, again at Groby College.

And the Senior Band is off to Blackpool to the famous Winter Gardens, at the invitation of Martin Mortimer, son of the great Harry Mortimer. YES, the new Millennium is going to be a very busy one for Ratby Band.

New President

The Band appointed a new President at its AGM, Mr Phil Plant, a great honour and privilege.

*Rainbow to windward, foul falls the
day*

Rainbow to leeward, damp runs away.

RATBY VILLAGE SOCIETY

As usual the Annual General Meeting drew more members than are normally seen at our monthly gatherings, probably because the supper which follows the business is so much enjoyed.

The Chairman, Jack Haywood, reviewing the past year, in which the RVS won the newly donated Fred and Nancy Harding Shield at the Village Quiz, was able to report on its continued success.

Tributes were paid to Ruth Ball and Janet Gutteridge for maintaining the War Memorial Flower Box, to those who had helped to make the children's tea party at the CROW PIE CARNIVAL a happy occasion, and to retiring committee member David Hulme for all his hard work in several capacities over the years.

The Officers, Jack Haywood (Chairman), Horace 'Hoz' Gamble (Secretary) and Betty Hulme (Treasurer) were all re-elected. Jill Grey re-joined the committee after a year's absence.

*Mackerel sky and mare's tails
Make lofty ships to carry low sails*

A. H. COLEY

*Plumbing & Heating Repairs,
New Installations, Bathrooms, Showers,*

For a full range of services contact:

4, Saxons Rise
Ratby
Leicestershire LE6 0NF
Telephone: 0116-2394277

Mobile Phone Top-up
Cards now available

**VODAPHONE
CELLNET
ONE 2 ONE
ORANGE**

Going Abroad? Don't
forget we can offer
the following

**Travel Insurance
Foreign Currency
E111 Medical forms**

Remember you can cash
cheques and make deposits
for these banks at your
local Post Office

**LLOYDS TSB CO-OP BANK
A & L GIROBANK**

**RATBY
POST
OFFICE**

Main Street
Ratby
Tel: 239 3001

And we also sell stamps!!!

ADDITIONS TO THE VILLAGE EVENTS DIARY

These events have now been made known to us since the February listings were published.

DATE	EVENT	ORGANISORS	VENUE
MARCH Tuesday 27 th	Musical Extravaganza	Primary School	Ratby School
MAY Saturday 12 th	School Fayre	Primary School	Ratby School
JUNE Wednesday 6 th	Governors Annual Meeting For Parents	Primary School	Ratby School

AGE CONCERN SEEK VOLUNTEERS

If you are aged 18 and over you might like to consider becoming an AGE CONCERN volunteer. There are many older people who are lonely or housebound. A home visitor has an important role to play, keeping the person they befriend in touch with what is going on in the area.

Scheme co-ordinator Mo Fowler comments, 'Dropping in for a cup of tea and a chat on a regular basis helps to alleviate loneliness for many people.'

No previous experience is needed, and you will receive training and support. You need empathy with and interest in older people and the ability to talk and listen.

Ring Mo Fowler on 01455 847 6666, and make a difference to someone's life.

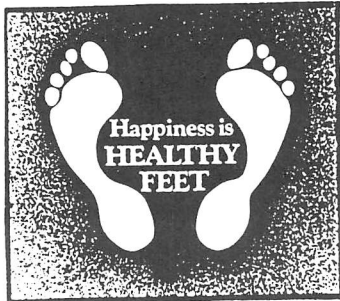
P. J. H.

**Specialists in
Carpet
&
Upholstery Cleaning**

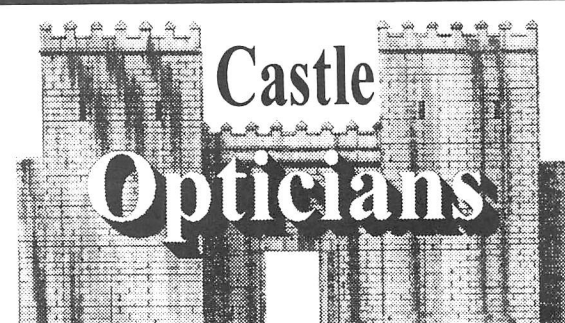
P. J. Hodkinson

0116 238 7509

QUALIFIED VISITING CHIROPODIST
Peter S Comley MSSCh. MBChA



Markfield 01530 244887
24 Hour Ansaphone
Offers a Convenient & Professional Service
Registered Member of the
British Chiropody Association



An Independant Practice

Eye Examinations
Frames & Lenses at Competitive Prices
Prescription & Non-RX Sunspecs
Daily & Monthly Contact Lenses
New Varilux Panamic Varifocals
Any Opticians Prescription Welcome

Open Mon-Sat Closed Wednesday

**47 Main Street, Kirby Muxloe
Leicester. Tel:0116 239 4288**

RATBY NEIGHBOURHOOD WATCH

We now have 22 co-ordinators, but still need volunteers to cover Cardinal and Overfield Close, Nicholas Drive, Tyler Road, Park Road, Markfield Lane and Stamford Street.

If you live in one of these roads, don't wait for others, volunteer just a little of your time to be a co-ordinator.

You will then be kept informed by the Police of criminal activities in the area and be able to pass the news on to your neighbours so that you are all forewarned.

Simple..but worthwhile!

Regrettably many people only seriously consider protecting their property after personal experience of theft.

The Police are well aware that awareness raising through Neighbourhood Watch helps combat local crime.

For more information ring 239 4450 or join in at the next meeting. Meeting notices are posted in the Library.

Sadly we all know of someone affected by crime, but with your help we can make a difference.

WHO BENEFITS FROM YOUR LOTTERY MONEY?

Would you like to know that your lottery money is helping local people?

With over £1.8m to raise this year, the LOROS lottery has become one of our major fund-raising activities.

The profit goes directly towards helping our local terminally ill patients, their families and carers.

And with a 1 in 77 chance of winning, that's why so many people are choosing to join in the fun.

Phone us on 0116 231 8430.

Thank you.

RATBY PHARMACY

58 MAIN STREET

LE6 0LL

Tel. (0116) 239 3139

**DISPENSING, FAMILY HEALTH CARE
and ADVICE, PHOTOGRAPHIC DEV.**

OPEN ; Mon.-Fri. 9am -1pm, 2pm-6pm

Saturdays 9am-12.30pm

**COLLECTION of PRESCRIPTIONS from
L.F.E. and GLENFIELD SURGERIES**



**QUALITY
AT THE
RIGHT
PRICE!**

**Penthouse
Carpets Ltd.**

AXMINSTERS SCOTCHGARD
TWISTPILE BERBERS
SAXONY HUEGA TILES
SCULPTURED CUSHIONFLOOR
FLOTEX

GEORGIAN CARPETS
ANTRON®
STAINMASTER®
CARPET CERTIFIED BY DU PONT

Thousands of Patterns
to choose from
£3.99-£45.50 sq.yd.

NEW!
Scotchgard
STAINRELEASE

Armstrong 

LAMBSKINS
BOWRON


TREADPIRE
Duralay
UNDERLAY
£2.50
sq. yd.

**FREE
FITTING**

SHOP AT HOME SERVICE
**PORTER'S DISCOUNT
CARPETS**

**121/3 STATION ROAD
RATBY, LEICESTERSHIRE**
Tel: 2393238/2395202

WHY WON'T THEY LISTEN?

Disappointing decision

By now you may have heard that Hinckley & Bosworth Borough Council has granted permission to Wimpey Homes to build 41 houses in the area off Station Road, where we currently have our petrol station and coach depot. Although the number of houses has been reduced by ten from the original application the Parish Council are extremely disappointed that the Borough Council have not taken full note of our objections.



What worries us...

Of most concern is the actual area where the houses are to be built, as it is known to be a flood plain. Nearby gardens are flooded at times of heavy rain and flooding between Ratby and Kirby Muxloe already occurs every year. It appears that it will be necessary to dig out the landfill that was previously built up by about ten to twelve feet and this can only exacerbate the problem. Even if a solution is found presumably this will simply move the flood plain and cause problems elsewhere.

In addition, the development will add to existing traffic problems and it will completely alter that part of the village. It will also mean the loss of the petrol garage, an amenity not available in any of the surrounding villages.

Financial insult?

There will be a contribution of £5,000 towards the provision of children's play equipment in the site and there is to be a further payment of £15,000 but this is towards the provision of *secondary* education (which can only mean Brookvale High School in Groby). It will be interesting to see how Ratby villagers feel about that.

And as if that isn't enough...

The Borough Council has also passed plans for a further 11 houses in Stamford Street. This means that Ratby has to absorb a total of 51 houses out of the borough quota. Members of the Parish Council recognise that the village cannot and must not stand still but they do sometimes feel that Ratby is a convenient dumping ground for new development. The Borough Council certainly doesn't take notice of our comments.

LEARNING THAT'S RIGHT UP YOUR STREET

For those of you who do not have a computer but would like to know what it's all about, this is for you...

- ❖ **Get to grips with new technology** – by the time you read this there will be a computer in the library. (Please note – computers are not frightening and you will soon become confident in using one!)
- ❖ **Access to the Internet** – you will be able to surf the net, looking at whatever interests you – holidays, medical information, current affairs, money matters – no topic is too obscure.
- ❖ **Contact people by email** – you will have heard about this method of communication, now try it for yourself.
- ❖ **Develop your own skills** – whatever you want to do the Internet will provide the route to the information you need, either personal or at work. There is also access to **learnndirect**, the government initiative that offers an extensive range of quality online courses.



Time available – during library opening hours. Cost – £1 per hour (or half hour session 50p)
Booking system in place. Basic tutoring available at certain times (by arrangement)

Tuesday 24th April

Annual Parish Meeting

Village Hall 7pm

Review of the past year

Looking forward to this year

Come and discuss the issues that are important to YOU!

ALL WELCOME

NEWS AND VIEWS



RAVISHING RATBY

The last two editions of WOT! explained that it was the plan to decorate the centre of the village with planters at strategic points in the village and hanging baskets on the lampposts. It was explained that the whole project was dependent on volunteers. Sadly, only a few people have offered their help and the Parish Council felt there was no alternative but to postpone a lot of the plans until the summer of 2002. Luckily, there are sufficient volunteers to help with planters and, at the very least, these will be positioned at the approaches to the village from Groby, Markfield and Kirby Muxloe. *A big thank you to all those who have offered their help.*



NEIGHBOURHOOD WATCH

A lot of people only think about protecting their property after personal experience of theft but it must make sense to take precautions before anything happens. By creating greater awareness and setting up a team of local co-ordinators our Neighbourhood Watch is there to make a difference. The Parish Council is fully supportive of this initiative and is now helping with costs.



RATBY BUSINESSES ON THE WEB

As more and more people have access to the Internet it makes sense to have our own website. This will be a combination of pictures and script describing our village and it will also give information about its businesses. It is important that it is as comprehensive as possible and includes *all* the businesses, no matter how large or how small. If you run a business in Ratby and want to be included in the website please supply the Parish Council office with the name and nature of your business, the address and contact details and a short paragraph about the enterprise. An appropriate photograph (of the premises or something pertinent to the trade) would also be useful.

DOGGIE NEWS

Hello! I have a message for all the dogs in Ratby. Many of us cannot be taken to our usual places for doggie-walks because of the very sad foot and mouth epidemic. Instead, we are using the children's play areas to do what we have to do and we are making a right mess!! Please ask your owner to take a poop scoop or a good old plastic bag to clear up after you. (Of course, they should be doing this anyway.) It really isn't fair to leave the mess behind and it will also cause a health hazard if we're not careful. Thank you.



THE WOLSEY

Newcomers to Ratby may not be aware that the houses in Stamford Close were built on the site of the former Wolsey Factory.

Mr Jim Briggs came across some editions of the 'Wolsey Magazine dating from 1931/32. His Granddad was Manager at Wolsey in those days.

Here are some fascinating extracts from the Magazines;

September 1931

Since the last issue we have had two benefits. First whist drive for Miss Winnie Fletcher which realised £10. We all wish her a speedy recovery.

The second effort was on behalf of Mrs P Gamble who lost her husband and daughter during one day. We had a benefit cricket match and also a whist drive, the total sum of these efforts realising £20 6s 01/2d

Ratby Town Prize Band Played selections during the cricket match and Mr Ferritti was kind enough to give us a tub of ice cream. The players taking part in this match were Wolsey Leicester Selected v Ratby Players Selected.

Congratulations to Mr E Herbert who celebrated his golden wedding on July 31st 1931. We have the distinction of having three generations working for us as his son and grandson are in our employ.

Weddings

Mr and Mrs E Grewcock on June 13th at Ratby P.M. Church.

Mr and Mrs L Gardner on August 1st at Ratby Church.

Stork

We wish to congratulate Mr and Mrs A Grewcock on the gift of a daughter, and Mr and Mrs G Foulds on the gift of a son.

*

September 1932 Issue

Sadly we discover that Mrs Winnie Fletcher 'of our seaming department', referred to in the above notes passed away on August 15th after a very long illness. 'Floral tributes were sent by employees and staff and also by the Sports and Welfare Department.

SYDNEY TYLER CRICKET SHEILD COMPETITION

We were very pleased to be able to take part in this competition once again and also wish to thank all opposing teams for the sportsman like manner these games were played in.

Played 6 Won 2 Lost 4

More Weddings

Saturday April 23rd at Ratby Parish Church, Miss F Pendery to Mr W.Brace

On Saturday May 14th, at Ratby Church, Miss G Richards to Mr O Lee.

'Miss Pendery and Miss Richards have worked in our Linking Department a considerable time, and we wish them the best of luck and much happiness.

These extracts give a fascinating glimpse into the past. Where today could you find three generations working in one company?

Who was Mr Ferritti?

And what could you buy for £10 in 1931?

Did you work at The Wolsey, or are you related to any of the people mentioned? Perhaps you played in or watched the cricket matches? Who was Sydney Tyler?

We'd love to hear from you.



CHRISTIAN AID

A house to house collection will be held in Ratby between May 13th and 19th for Christian Aid.

We need collectors for this and if you would like to help please ring 2392357 for details.

Thank you.



GAS APPLIANCE SERVICES

- Appliance Servicing and Installation
- Breakdown and Repair Services
- Plumbing and Heating Installation
- Kitchen & Bathroom Design and Installation
- Quality Guaranteed by Experienced Engineers

YOUR DOMESTIC GAS BOILER SERVICED

6 SAXONS RISE, RATBY, LEICS. LE6 0NF

■ Tel: 0116 2393662

£25 + VAT

OAKLANDS RIDING SCHOOL

WE CATER FOR EVERYONE FROM THE NOVICE TO EXPERIENCED RIDER

All Weather Riding Area

Ring Julie on 238 7570

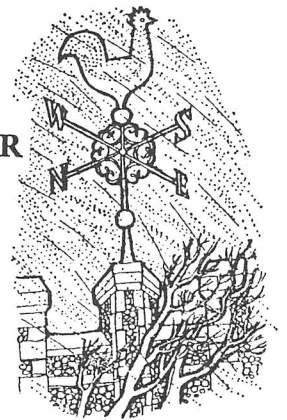
Accountancy, Payroll & Book Keeping For The Self Employed or Small Business.

Self Assessment Tax Returns, Vat, Computerised Payroll Accounts & Book Keeping

Confidential Service, Reasonable Fees
No Job too Small

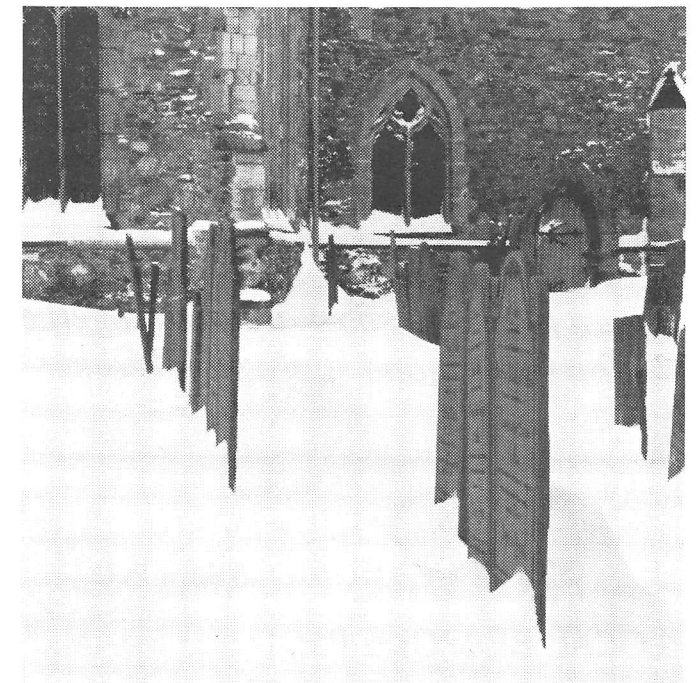
Tel: (0116) 238 7117

THE WEATHER



*If there be a rainbow in the eve,
It will rain and leave.
But if there be a rainbow on the morrow,
It will neither lend or borrow.*

*If the cock moult before the hen,
We shall have weather thick and thin.
If the hen moult before the cock,
We shall have weather hard as a block*



MELSWAY DRIVING SCHOOL

Mel Shipley D.O.T. A.D.I. M.I.A.M.

All ages welcome....and nervous pupils

Learn to Drive with Melsway

Telephone 238 6149

3 Barton Close, Ratby.

PIP'S PRIVATE HIRE

0116 239 0909

GROBY * RATBY * KIRBY

AIRPORTS * LOCAL & DISTANCE

- B'HAM & E.M.A.
- LUTON & HEATHROW
- OAP GREEN TOKENS TAKEN

LETTER

Dear Editor

Another Loss For Ratby

I write as a local resident who is very interested and involved in village affairs to say how saddened I am to see that yet we have lost yet another of our local amenities. This time it is the petrol station, which has been closed down to make way for new housing development.

I understand that this proposed development of 41 new properties to be built by a large national house-builder, was given the go ahead by Hinckley and Bosworth Borough Council despite objections from our own Parish Council, local groups and individuals.

In addition to the traffic and parking problems that are likely to ensue in the area, there are also concerns about the function of the adjacent flood plain and effects to the local environment and wildlife habitat close by.

On top of this, I now feel that salt has been rubbed into the wounds with regard to this matter.

I understand that a donation of £15,000 that is being given by the developer towards local education needs is being directed away from Ratby and allocated to Brookvale School at Groby. In the meantime, some of our village school children are making do with portable classrooms that lack running water and hygiene facilities.

Surely there is something wrong somewhere! I suggest that this is just another example of our Borough Council appearing to totally ignore local opinions and acting against the interests of our community.

I have to raise the question, whose side is the Hinckley and Bosworth Borough Council on? It seems to me that it certainly is not Ratby's!

*When frost and snow are both together,
Sit by the fire and spare shoe leather*

PICTURE FRAMING LOCAL BESPOKE PICTURE FRAMING SERVICE

FREE HOME COLLECTION, DESIGN AND
DELIVERY

GALLERY STANDARD AT AFFORDABLE
PRICES!!

CALL CHRIS on 0116 2387458 ANY TIME



Pabart's Ratby News

5 Station Road, Ratby.
Tel. 0116-2393287

For the Largest Selection in Ratby of
Beers, Wines and Spirits.

A vast choice of Confectionery and Soft Drinks.

A Large variety of Greeting Cards, Wrapping Paper
and Stationery.



Newspapers & Magazines.
Delivered to your door daily.

We are the agents for
SKETCHLEY DRY CLEANING.



Video Rental & Photocopying also available.

Opening Hours:
Mon - Fri 6.15 am to 1 pm & 2.30 pm to 10 pm.
Saturday 6.15 am to 10 pm.
Sunday 7.30 am to 2 pm & 7 pm to 9 pm.



COME IN AND SEE FOR YOURSELF

DEADLINE FOR JUNE ISSUE

WEDNESDAY MAY 16th

ARTICLES MAY BE SENT TO
3 INGLE DRIVE.

EDITOR 239 3367

ADVERTS 239 3279

ARTICLES 239 4873

VILLAGE POLICEMAN

When on duty PC Reg. Varney can be
contacted on his mobile phone:

07752 632 266

JULIE'S HAIRDRESSING

MAIN STREET, RATBY

**Traditional & Modern
Styling**

Telephone: 2392406

THE SERVICE GARAGE

MAIN STREET RATBY

M.O.T. TESTS
CARS (PETROL - DIESEL)
and
MOTORCYCLES

M.O.T. HOURS 9.00 - 4.15 Monday to Friday
(Closed for lunch 1 - 2)

Telephone (0116) 2394966

RECIPE CHEESE PUDDING

Ingredients

- 6 thin slices of bread and butter
- 2 eggs
- 1 teaspoon made mustard
- Salt and pepper
- 1 medium chopped onion
- 1 tablespoon oil
- 1 tablespoon tomato ketchup
- 4 oz (110 gr.) grated tasty cheese
- 3/4 pint milk
- 1 oz (25 gr.) fresh breadcrumbs

Method

Set oven to GAS 5 or ELEC. 190C/375F

- Lightly soften onion in oil in frying pan
- Butter a large pie dish and line with small squares of bread and butter
- Beat eggs with seasoning, onion and ketchup
- Add milk and most of cheese and mix well
- Pour mixture over bread in the pie dish and leave to soak for 15 minutes
- Mix remaining cheese with breadcrumbs and sprinkle over the top.
- Bake in middle of oven for 40-45 minutes until the topping is crisp
- Serve with baked tomatoes for supper.

Scrivener

