

OCTOBER/NOVEMBER 2010

ISSUE 144

WOT!

About Ratby

PUBLISHED BY RATBY SCOUT GROUP



EXTRAVAGANZA in RATBY CHURCH

Ratby Church was busy throughout the weekend of September 11th to Monday 13th as people came in to see the beautiful wedding anniversary flower displays and wedding dresses from different eras. Many were villagers who don't usually come into the church. There was a great deal of interest in the exhibition of wedding photographs, depicting local people, and showing how wedding attire has changed over time. The extravagant clothes of the Victorians and Edwardians, reflecting a time of prosperity, contrasted with the simpler clothing of war time austerity.

Visitors were intrigued by the dresses and accompanying details. There were some fascinating anecdotes. Leila and Bill Williamson were married in November 1940, and the icing on the wedding cake was cardboard, due to food rationing and the scarcity of sugar. An air raid interrupted the reception, and they spent the next few hours in a shelter!

A receipt showed us that one couple's honeymoon bed and breakfast stay cost just £9-18s for four nights, and two dinners were 14 shillings in 1960.



Pictured left is a 'paper' anniversary floral display with sparkling jewelled dress, and on the right 'tin and brass' wedding, and rich coloured dresses linking to a 'ruby' anniversary display.



High Quality New Homes

FIELDING LANE

OFF FERNDAL DRIVE, RATBY LE6 0AS

Visit our Showhome on
Fielding Lane, Ratby
Friday, Saturday & Sunday 12-4pm

LAST 5 PLOTS AVAILABLE

3 Bed Semi-Detached Homes from £169,950

For further details please contact
Cawrey Limited
Kirby Grange Farm, Taverner Drive, Ratby Leicester LE6 0HQ

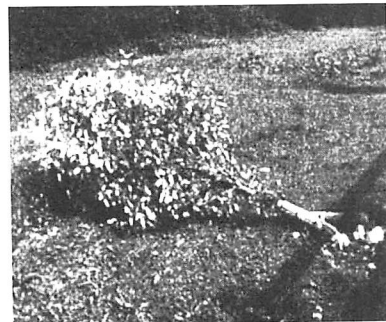
Tel: 0116 239 0600



www.cawrey.co.uk
e-mail: enquiry@cawrey.co.uk

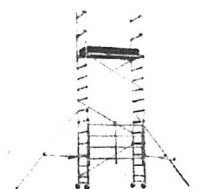
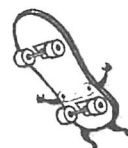
Ratby Parish Council

Didn't the flower boxes around the village look good this year? On your behalf the Parish Council would like to say a big THANK YOU to the ever willing volunteers who planted them and to Simon for keeping them supplied with water during the dry season.



THANK YOU also to this Sorbus for ten years of green leaves, white flowers, and those amazing bright red berries. It had been hoped that you and your companions would flourish on the site of the old sewage farm, despite the stony substrate, when you were planted to celebrate the Millennium. We were, therefore, saddened to see you lying prostrate on Jubilee Park last month.

Young people in Ratby have shown excellent initiative in asking the council to provide a skatepark on Ferndale Park and we hope to meet some of them informally to discuss the pros and cons. Also we have had an indirect approach from the Youth Service to discuss facilities on Ferndale Park. We are trying to discover if these two requests are related. Going to the other end of life, are there any Seniors out there who would like to see something on the park for them? We are currently looking for a restrictive barrier for the Lockley Close entrance to Ferndale Park which will deter or prevent mini-motos from entering the park; meanwhile we are deeply grateful to our PBO for his relentless pursuit of these vehicles.



Please don't panic if you should see scaffolding around the village sign at the bottom of Desford Lane. We have received a report that the structure is potentially unsafe and therefore have engaged the services of Skillstone to put this right.

Bloors are appealing? Yes, this is still ongoing. Firstly, we say another big THANK YOU this time to members of the Ratby Village Society for helping councillors deliver the latest advice to every house in the village. Secondly, we need to assure you that your contribution to the parish precept is being put to good use as the Council has engaged the services of a planning consultant to help prepare its case to the Inspectorate against this development.



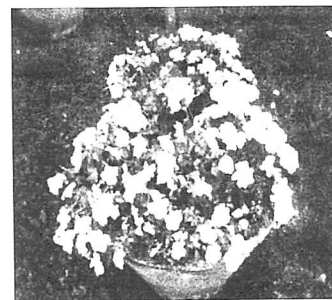
CONTACTING RATBY PARISH COUNCIL

The Council Office at 13 Station Road is open Monday to Friday from 9 a.m. to 12 noon.

Telephone 0116 2390167

E mail address: ratbypcouncil@btconnect.com

Take a look at the Council's website for up to date news and information: www.leicestershireparishcouncils.org and click on the links to maps & Ratby.



EXHIBITION and FAIR

Ratby Village Society Anti-Litter Group welcome everyone to join them at their **Fourth Annual Art Exhibition and Craft Fair**, To be held in the Church Rooms, Church Lane on Sunday 7th November from 11 am. to 3 pm. Admission 20p, families 50p. We have lots of lovely crafts for Christmas, including jewellery, woodturning, glass, ceramics, exclusive handcrafted scarves, spinning, knitting, dyeing, hand made cards, photographs, individually handmade cloth dolls, textiles and cakes and preserves.

A variety of original paintings and related artwork by local artists will be on display and for sale.

Refreshments, and a 'Really Christmassy Raffle.'

Please come along and bring a friend with you. You may even get to chat with your local Village Society, History Group and Neighbourhood watch members too.

Thank you for the donation to Wot! Editor.

Broken Games Console?

We specialise in repairing OUT OF WARRANTY consoles via our cost saving drop-in service.

IT'S EASY call **0116 286 6447**

or find us at the address below.

Once we've given you a quotation we'll get on with the repair and when we've finished you simply collect your console and pay!

www.ipaqrepair.co.uk

We repair the following...

**PlayStation 3 • XBOX 360 • PSP
Nintendo Wii • Nintendo DS**

**Also... Smart Phones
iPhones • iPod Touch**

**5%
discount with
this advert**

**CONSOLE
CLINIX**



IPAQ Repair & Parts

Unit 33, King Street Buildings
Enderby, Leicester LE19 4NT



**iPhone
& iPods
Parts &
Repairs**

RATBY ART GROUP

Every Tuesday afternoon a group of local people meet up at the Village Hall for their Art class.

The sessions are led by Julia Kent, and are informal and relaxed. The atmosphere in the hall is tranquil and there is a sense of concentrated purpose, as the group work on their creations.

'It's peaceful and totally absorbing, I forget everything when I am here,' one of the group said.

Some weeks Julia suggests a theme, and the group might all work on the same subject to help develop their techniques. Most were beginners; 'You find that you've got an ability that you didn't know you've got,' 'It's always good to challenge yourself.'

Another group member remarked that she was 'amazed at what I did that first week, we didn't realize what we could do in two hours.'

Some of the group's work is displayed on the walls of the village hall, and they are working on pieces to exhibit at the annual Ratby Art and Craft exhibition in November. Why not visit and view the work, some of which is on sale?

If you have ever wanted to 'have a go' at watercolour painting, pop into the hall and have a look? You will be made very welcome.

The session runs from 1.30-3.30.

Refreshments are available, and it's a sociable afternoon.



News from St Philip and St James

Because the church was built, and exists, for the people of Ratby and beyond, we are trying to make it more accessible for everyone to use. From Saturday 18th September the Church will be open every Saturday between 2pm – 4pm. There will be a rota of members of the congregation available to meet and chat with anyone who wants to have a look around the church or simply enjoy the peace and quiet. You may be visiting the cemetery, just passing, have past connections with the church or interested in looking around a beautiful church. Whatever the reason, you will be most welcome to call in and stay for as long as you want during the open times.

Next month on Sunday 3rd October we celebrate our Harvest Festival. This is always a great time to come and thank God for all the goodness we have around us but perhaps take for granted sometime. This will be a family friendly service and afterwards we will be taking harvest gifts out to some of our older villagers. If it's been a while since you last visited St PJ's – or even if you've yet to do so, a welcome awaits you at your church.

RATBY COMMUNITY ORCHARD

On **Sunday October 10th**, from 2 -4 pm we will be holding an **Apple Juicing Event** at the Orchard, on Taverner Drive. Come and help us press and juice apples, and taste the different flavours. Bring along your own apples too, and bottles for the juice. The event is free, but children must be accompanied by adults.



RATBY MEMORIAL

This year marks the 90th anniversary of the memorial unveiling ceremony which was conducted by Lord Haig. Look out for commemoration of this in November.

LETTERS and ARTICLES

We welcome letters and articles, but reserve the right to edit them or deny publication. Your name and address must be supplied, but you may ask for them to be withheld. Views expressed in articles and letters do not necessarily represent the views of the Publishers. We cannot be held responsible for information in advertisements, which we accept in good faith.

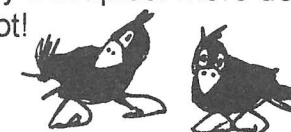
RATBY VILLAGE SOCIETY

We welcome everyone to join us at 8pm in the Village Hall, Main Street, for the following meetings:

Tuesday 19th October- David Greatwood, senior valuer from Hanson Auctioneers in Derbyshire will talk about his life in antiques and will appraise and value objects brought in by you. We are expecting this to be a very popular evening, so if you intend to bring an antique please allow extra time to place it on the table provided.

Tuesday 16th November: - Do come and join us for a pleasant evening of popular music and songs, played and sung by the talented duo of David Woodward and Kirt Hammonds. Seasonal refreshments: mincepies, tea and coffee will be served.

There is no meeting in December, but in January Sue Kibble will talk about the benefits of complimentary therapies. More details in the next issue of Wot!



Let the sun shine again on our Rectory.

For many of us the Rectory has been at the heart of Ratby, having held countless events, including picnics, fetes and jazz in the garden. I believe that everyone has at least one fond memory of times spent here with family or friends.

As a child my most memorable experience was with the Rainbows, when we buried a time capsule in the gardens. We all brought a contribution and discussed why these things would be important in the future. My item, a bag of white chocolate buttons was rejected, despite my argument that its discoverer would be hungry after all the digging. (I also recall dropping it in when the group was distracted by a squirrel.)

In 2009 the decision was made to relocate the Rectory as it is too much of a financial burden. Discussions have begun with the local Planning Authority with the intention of building 'a modest residential property' in the grounds. It is likely that the building will not be let due to the amount of work needed. Properties will be built on site and the beautiful grounds destroyed. The inevitable will happen, the Rectory will be demolished.

This has been the case all around the area. Expenditure on Rectories is greater than their income. Since when did income determine the value of these buildings to their communities? The Village Hall is overbooked, and cannot compare with the beauty of the Rectory. If the Rectory was used instead the money received could go towards its upkeep.

It is essential that we fight to preserve this wonderful building that means so much to so many of us. How can we stand by and watch it being destroyed. The price to maintain it may be steep, but the happiness it has given us over the years? Priceless.

Rebecca Harrison.



Porter's Discount Carpets

121/3 STATION ROAD, RATBY

TELEPHONE: 239 3238 OR 239 5202. MOBILE: 07860 551142

SHOP AT HOME SERVICE



NOW INCLUDING L.B.P. Tiling SPECIALISTS IN CERAMIC AND PORCELAIN TILING

Ratby Post Office & Newsagents

PHOTOBOOTH INSTORE

Only £8



Passport Check & Send

- ✓ Make sure your form's correct
- ✓ Applications despatched by Special Delivery
- ✓ Priority treatment provided
- ✓ Track your application online

30 Main Street - Tel: 2393001

Shop Hours:
Mon to Sat
9.00am to 5.30pm

Post Office Hours:
Mon to Fri
9.00am to 5.30pm

METHODIST CHAPEL TEAM TRIUMPH AGAIN!

A large crowd waited in anticipation as the five teams nervously took their places for the Village Quiz on September 21st. And they were not disappointed.

Once again the brave volunteers treated us all to a display of remarkable knowledge and humour as the twelve rounds of general knowledge and specialist questions such as Geography, Literature and the dreaded 'spelling bee' progressed. Final scores were:

The Village Society	41
Parish Council	46
History Group	50
The Parish Church	52
Methodist Church	60

Pictured are the winning team with the Fred Harding Shield, left to right, Ken Pickard, Jean Vann and Ian Freeman.



WRIGGLY READERS

This is a lovely session for babies and toddlers, with their parents or carers. There are rhymes and stories to enjoy.

It runs from 2-2.30 pm in Ratby Library on the fourth Thursday of every month. The next session will be on October 28th.



**OAKLANDS
RIDING SCHOOL**

*WE CATER FOR EVERYONE FROM
THE NOVICE TO EXPERIENCED RIDER*

All weather riding area
Ring Julie on 238 7570

WE'LL ALL MISS THE 'LOCAL YOKEL'

It is with great sadness that we report the death of Dennis Green on Sunday August 22nd, following an unexpected short illness. He contributed many articles to this magazine about Ratby's colourful past under the pseudonym 'Local Yokel.'

Dennis was a life member of Ratby Local History Group, and will be remembered for his vivid and fascinating talks of childhood memories and growing up in the village. His account of Ratby in the 1930s/40s was a major contribution to the second volume of 'The History of Ratby.' He was a founder member and one-time chair of Ratby Village Society.

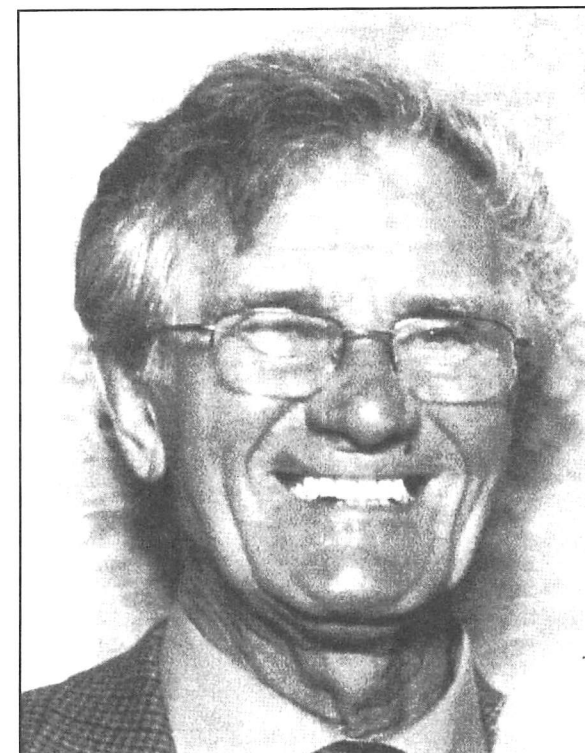
Dennis had been a part of Ratby Methodist Church all his life and, to him, it was his second home. He began as a child in the Sunday School, receiving his bible (as was the custom at that time) at the age of 16. It was a natural progression for him to become a Sunday School teacher and a Youth Leader. He was the founder of the Twenty Club (for the young folk in their 20s) which as the years progressed – and the ages of those involved increased – became the Monday Circle. His official posts in the Church included Trustee, Society Steward, and Property Steward, not to mention his involvement on the Finance Committee and his capacity as Auctioneer for the Harvest auctions for many years.

Dennis had a strong faith and always wanted to learn more. He had a commitment to serving the Lord in many practical ways. He had a great fondness for local village groups and regularly prompted the Church in its outreach to the local community. His care for the elderly and infirm of the village was exemplified in his delivering of Christmas gifts from the church. Those at home and in residential care greatly benefited from his visits.

His favourite charity was the Rainbows Hospice and his tireless work for it, including his annual toy sale, was a testament to his care for others.

Den will be greatly missed at Ratby Methodist Church for his welcoming smile, his cheerfulness, his loyalty, his wonderful sense of humour, his support for all the good deeds the Church endeavoured to do and for his creative talents. His charismatic personality will leave a lasting legacy.

His loss will be greatly felt by all who enjoyed his self-deprecating sense of humour, kindness and generosity of spirit.



Thank You.

The overwhelming support of cards, phone calls, offers of help and flowers since Den's death has made it impossible to reply individually.

Thank you too for the generous donations to Rainbows in Den's name. The total raised is over £1000. It has made me and my family so proud to know he was held in such high regard by his fellow village folk.

He will be sorely missed.

Thank you and God bless.

Mrs Local Yokel.

RATBY CHEMIST LTD.
58 MAIN STREET LE6 0LL
***FREE PRESCRIPTION COLLECTION
SERVICE! ***

From surrounding surgeries.
**JUST PHONE US ON 239 3139 with your
requirements. We will process your
prescription with the surgery.**
All you do is **COLLECT IT** from us, or we can
deliver to your home if needed.
You can e mail us with requirements;
Ratbychemistltd@aol.com

METHODIST CHURCH Celebrating 99 years!

Our 99th Anniversary celebrations:
(watch out in the Wot for activities leading up to our Century)

Saturday 23 October from 6pm a Quiz and Supper. Teams of 4 to 6. Cost £6.

On **Sunday 24th October** at 10am we welcome back for our morning service the Rev Jane Cassidy (was Hamlin)

Sunday evening at 6pm our Circuit Minister, the Rev Susan Holmes will take the service.

We look forward to the contributions that they will bring to our Church.

Saturday 27th November will be our Christmas Bazaar, with tasty lunches, stalls and games. 10am to 1pm. Look forward to seeing you.

Saturday 11th December will be our Christmas Coffee Morning, from 10am to 12noon, with carols and mince pies.

**YOUR LOCAL CAB COMPANY
NOW AVAILABLE**

GROBY CABS

**LOCAL & LONG DISTANCE
ANYTIME ANYWHERE**

**AIRPORT TRANSFERS
E.MIDS = £20.00**

PHONE:

0116

2 31 22 14

HIS and HERS

**LADIES AND GENTS
HAIR DRESSING**

Re-opened under New Management
OAPs REDUCED RATES
Appointments not always necessary.

156 STATION ROAD, RATBY
239 4429

ON THE BEAT

Hello everyone, my name is Natalie and I'm your newest addition to the beat team. I have been working in the area now for 4 months and enjoying every minute of it, I have already met a lot of you at summer school fetes, beat surgeries etc but still have lots of new faces to meet so please say hello when you see me around.

In just a few weeks it's time again for the spooky fun of Halloween although for a lot of people this is a vulnerable time as they may live alone or be elderly. Whilst I don't want to ruin the fun of dressing up and going trick or treating I ask that we bear in mind the elderly community and signs on doors asking not to knock there.

During the Halloween weekend the team will be on hi vis patrols around the villages on foot, bike and also in the car so if anyone has any issues they would like addressing please don't hesitate to stop us and ask.

Parents, its not only Halloween soon but also not far from bonfire weekend, so it is worth considering what your youngsters are doing when they are out and where they are. This not only acts as a safety net but also will hopefully prevent them from getting into mischief and a subsequent call from the Police.

The cold weather is fast coming so kids/young adults what are your plans for the dark cold evenings? Your Beat Team are still supporting the use of a Friday Night Youth Club, with transport being arranged for youths to travel safely to and from the Community Centre in Markfield. I would suggest this is an ideal way for young people to

have some fun and meet up with new people. The club is run by Dawn Beasley who has a number of years of experience with the Youth club and from feedback received this appears to be a popular venture, we have some great new skate ramps although these cant be used for bikes we are trying to resolve the issue so 3 bikes can use them at any one time. The club begins at 6pm and runs until 9pm catering for young people aged between 12 – 16 years.

We are having a slight influx with damage and theft from cars and garages, can I remind you all to ensure that all valuables goods are secured safely in the house and you vehicle is locked and secured. If you have a tracking system please get it activated as this is vital in catching criminals. For advice on garages you can visit our website, pop in to any beat surgery (advertised on the website) or come and visit a member of staff at Market Bosworth police station or Markfield community centre.

I hope you all have a lovely Halloween.

Natalie Mace 6937



RATBY CO-OPERATIVE BAND

Dates for your diary:

December 12th. Christmas Concert with all the Bands, 7pm at Bosworth College, Desford.

February 12th New Year Concert in Ratby Parish Church. 7.30pm.

JULIE'S HAIRDRESSING MAIN STREET RATBY

Traditional and Modern Styling
Telephone 239 2406

GAS APPLIANCE SERVICES

0116 239 3662

Appliance Servicing and Installation
Breakdown and Repair Services
Plumbing and Heating Installation
Kitchen and Bathroom Design/Installation
Quality Guaranteed by Experienced Engineers



**YOUR DOMESTIC
GAS BOILER
SERVICED £35+VAT**

POND DIPPING

Despite the low levels of water this year, we managed to find a good variety of pond life once again.

An enthusiastic group of families and orchard members dipped their nets on August 4th, with expert support from Neil Talbot of the Leicestershire and Rutland Wildlife Trust. This year we were surprised to find sticklebacks as well as the usual range of pond creatures.



Exploring at Ratby Pond.

SUPPORT 'WOT about Ratby.'

If you ring up any of our advertisers, please let them know that you saw their advert in the magazine. This encourages their much-needed support.

Thank you.



LETTERS TO THE EDITOR

Are we in danger of losing our village identity?

In Ratby we are very proud of our excellent pre-school facility, this year however there are at least a dozen children who unfortunately will not be attending due to the lack of places. This year no children have been taken from outlying areas, but still we lack the facilities to fulfil the requirements of our own village residents.

I also know of a couple of instances where residents have been refused for their children to attend Ratby Primary; however after an appeal they were accepted. (This is just the start)

We still have a considerable amount of housing development to come, the old bakery site, Cawrey's new development on Groby Road, and Bloor still trying to construct yet more. Without an improvement to our already stretched facilities this situation will only deteriorate with the main problem being the education and well being of our village children.

Our current infrastructure cannot sustain any more housing projects without improving our roads, education facilities, a medical centre, and leisure amenities.

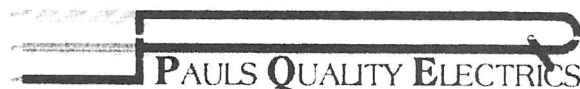
To preserve our current way of village life we must therefore oppose any future developments unless they are accompanied with the facilities to fulfil our needs. Without these our future looks grim, with parents having to travel as far as Markfield and Kirby just to ensure their children have pre and Primary school places.

Are these journeys that you want to make on a daily basis in all weathers? And do you have transport at your disposal to make these trips? **Parents beware: County Hall have already designated Markfield Primary as a catchment area for Ratby.**

A Worried Grandparent
(Name and address supplied)

STOP PRESS A planning appeal for residential development in Markfield has just been upheld.

"Everything From A Blown Fuse To A Complete Rewire"



Your Local, Fully Qualified City & Guilds
ELECTRICIAN



Upgrading Old Fuse Boxes – Rewires – Alarm Systems
New Sockets & Lighting – All Domestic & Commercial Electrics

Call Paul Rumble on: (0116) 2872338
MOBILE: 0798 0911 869 Website: www.pqelectrics.com

FREE BAG!!

Don't forget to claim your FREE BAG, as advertised in our last issue of Wot!

Phone 0116 305 0001

Please quote BAG8 as that the only way to get the bag.



Pabari's Ratby News. (Est. 21 years)

5 Station Road, Ratby, Leicester, LE6 0JQ.

Tel: 0116 239 3287.



We Deliver Daily, Evening & Sunday Newspapers.

A wide choice of Magazines, Greeting Cards & Stationery.



Sweets, Confectionary, Tobacco, Soft Drinks & Milk.

Top Up Your Mobile Phone, Electric & Gas.

A Vast Selection of Beers, Wines & Spirits



Play The National Lottery Here

Now!

Opening Times:-

Mon-Fri :- 5.00am to 1.00pm, then 2.30pm till 10.00pm
Sat:- 5.00am through until 10.00pm
Sun:- 7.00am to 2.00pm, then 7.00pm till 9.00pm



HARVEST HOME

We think this is a photograph taken at Ratby Working Men's Club.
Please write in and tell us what you know about it.



MILLENNIUM WOODLAND

This year marks the 10th anniversary of the Woodland Trust's 'Woods on your doorstep' initiative.

Here in Ratby local people were involved in planting Pear Tree Wood and the site has been transformed now that the trees have grown and wildlife has become established.

People asked for their views on Council leadership

People in Hinckley & Bosworth are being asked to have their say on how the Borough Council will be governed in the future.

At the moment the council is run by a 'strong leader' helped by a cabinet executive, who are all chosen by fellow councillors.

However, the Government has asked all local authorities to make a decision on how they want to be governed; this could include changing to an alternative arrangement. This would see the council being run by a mayor, who would be directly elected by the people, backed by a cabinet executive.

The council's preferred option is to keep the existing arrangement with some minor amendments required by the legislation, but they want to hear what other people think. A feedback form is available on the council's website (www.hinckley-bosworth.gov.uk) or comments can be emailed directly to:

louisa.horton@hinckley-bosworth.gov.uk
by 30 October 2010.

All views will be considered and a decision will be taken at the full council meeting in December 2010.

Established 40 Years.

Glenfield Electronics

- Digital Aerials Fitted
- DIY Aerial Supplies
- LCD & Plasma service

We fit phone extension points

Tel: 0116 2517 533 www.glenfieldelectronics.co.uk

168 Fosse Road North, Leicester LE3 5ES

DEADLINE for issue 145
DECEMBER/JANUARY 2010/11
FRIDAY 12th NOVEMBER

EDITOR 239 3367
ADVERTS 239 3279
ARTICLES 239 4873

Articles may be sent to 3 Ingle Drive
Or Email: sueboud@hotmail.com

RECIPE

Chapel Chocolate Cake

Ingredients

Cake

- 170g (6oz) self raising flour
- 4 heaped tablespoons cocoa powder
- 1 heaped teaspoon baking powder
- 125g (4oz) caster sugar
- 1 dessert spoon black treacle
- 150ml (1/4 pint) sunflower oil
- 150ml (1/4 pint) milk
- 2 large eggs

Filling and topping

- 4 tablespoons black cherry jam
- 350ml (12fl.oz.) fromage frais
- 150g (5 oz) double cream

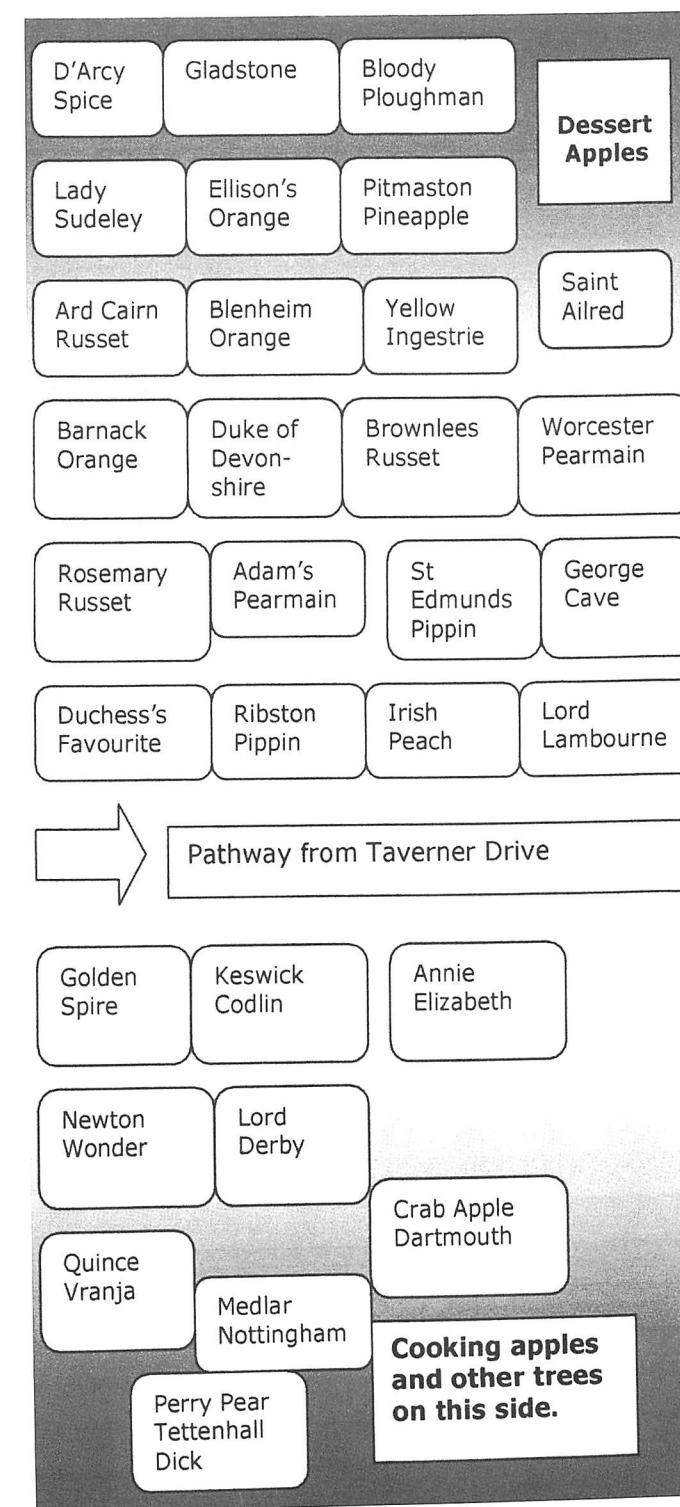
Method

1. Set oven to 170C/325F /Gas 3
2. Place all cake ingredients in processor and blend together, or mix with a wooden spoon.
3. When dark brown and creamy, divide into half and spoon evenly into two 18cm (7")* greased sandwich tins and bake for 45 minutes. When cooked, remove from oven, take out of tins and allow to cool.
4. Filling and topping: beat the fromage frais into the cream until thick.
5. Spread one cake with jam and top with a third of the cream mixture.
6. Sandwich the two halves of cake together and spread the remaining cream mixture on top, using a fork to bring up into peaks.

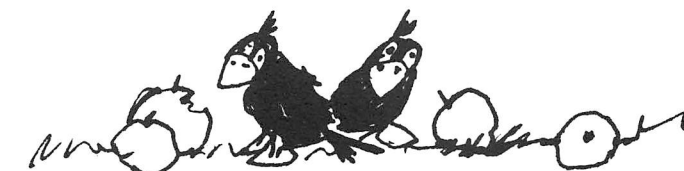
*Please make sure you use the correct size tin. The wrong size could lead to either a hard biscuit or a gooey mess.

Graville.

Plan of Ratby Community Orchard



Handy Reference to cut out and keep.
We have produced this whilst the Orchard notice board is under repair.



WOT RATBY WEATHER @ www.ratbyweather.co.uk brought to you by itech Repair