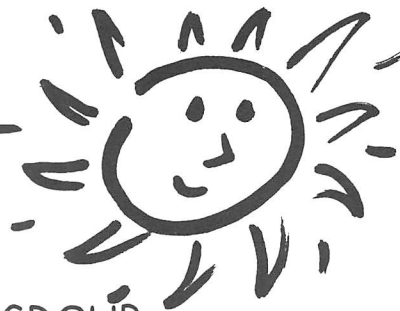




WOT!

About Ratby

PUBLISHED BY RATBY SCOUT GROUP



RATBY COMES OUT TOP!!

LEICESTERSHIRE AND RUTLAND BEST VILLAGE COMPETITION
SPONSORED BY CALOR IN ASSOCIATION WITH LEICESTERSHIRE COUNTY COUNCIL

We are proud to announce that Ratby won both the **Business category** and the **Best Village in Section D** (Population 2001-5000) award.

The Business category takes into account the way in which local businesses support the village as well as providing employment; they in turn are supported by the community who use local businesses wherever possible.

The village was visited in June by a group of examining judges who spoke to the team behind the entry to verify all details given in the written report.

The award was presented at County Hall by the Lord Lieutenant of Leicestershire, Lady Gretton, who is also president of the Rural Community Council (Leicestershire and Rutland) and also by the chairman of Leicestershire County Council, Mr Tony Kershaw, together with Calor Representative Mr Ian Collins.

The presentation was in the form of prizes and illustrated certificates.

The two certificates will be displayed at venues around the village, giving residents the opportunity to see them.

Jane Rayne-Ratby Village Society



Village scenes showing our Post Office, the War Memorial and the



FERNDALE DRIVE - RATBY

An **Outstanding** development of
3, 4 & 5 bed spacious **New Homes**

Visit our Showhome on Fielding Lane, off Ferndale Drive, Ratby
Open Friday Saturday and Sunday 12-4pm

Homes Now Available

3 Bed Semi-Detached £174,950

(No stamp duty to pay under £175,000)

3 Bed Detached from £219,950

4 Bed Detached from £249,950

3 Bed Detached Bungalow £265,950

5 Bed Detached £319,950

Assisted Purchase Scheme Available on selected Properties.
Please call for Details

For further details please contact
Cawrey Limited

Kirby Grange Farm, Taverner Drive, Ratby Leicester LE6 0HQ

Tel: 0116 239 0600

www.cawrey.co.uk

E-Mail: enquiry@cawrey.co.uk

RATBY METHODIST CHURCH TOY SALE in aid of RAINBOW'S HOSPICE

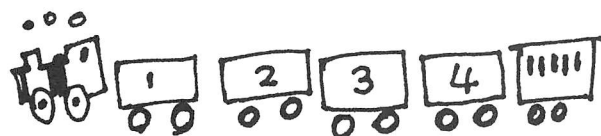
Once again our Annual Sale of 'Almost New Toys' is due, and will be held at the Methodist Church on **Saturday November 15th** from 10 a.m. to 1 p.m.

Just in time for Christmas, this selection of more than a hundred toys, priced between 50p and £8 includes soft toys of every shape and size, bicycles for most ages, remote control cars, jigsaws, books, Desk and Chair, and games galore. There is even a sledge (unsold last year due to global warming concerns!)

Kindly donated by Ratby villagers and others these toys are of the finest quality and presentation, and will be sold at a fraction of their original cost, with a money-back guarantee if you are not entirely satisfied with your purchase.

Last year our sale realised £300 for this worthy cause, and we hope to raise a similar figure again.

Admission is free, browsing is free, and you could save a fortune. God Bless.



"Cliff...As If!"

"Cliff As If" brings a shining light into people's hearts. Just when you think all is dark in the world, along comes "Cliff...As If!" Book Saturday evening 11th October 2008 for this fun filled family show *coming soon to a village near you!* (Kirby Muxloe Village Hall)

Show starts at 7:30pm and tickets cost £5 each.

HIS and HERS

**LADIES AND GENTS
HAIR DRESSING**

OAPs REDUCED RATES
Appointments not always necessary.

156 STATION ROAD, RATBY
239 4429

News about the Village Church Clock

You may be wondering why our village clock on the church tower has been stuck at 12.00 for the past month or so. This is because one of the main cogs of the mechanism has worn and needs replacing. The cost of this has been quoted at £750 + VAT. The church council simply do not have the funds to do this repair at this stage, so we're sorry to say that we do not expect the hands to get going again for a while.

10 years ago the village ran the 'every second counts' campaign to restore the clock and provide funds for annual maintenance, raising £3,600 (£1 for each inhabitant); now that fund has been used up should we do the same again in 2009?

Richard Worsfold (239 3009)
rworsfold@btconnect.com

Wriggly Readers Baby and Toddler Story Times

Ratby Library
4th Thursday of every month.

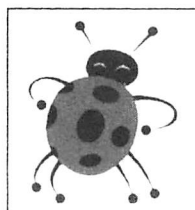
2:00 - 2:30 pm

For 0-4 year olds

and their grown ups!

The next sessions are on:

October 23rd
November 27th
December 18th



RATBY CHEMIST LTD.

58 MAIN STREET LE6 0LL

***FREE PRESCRIPTION COLLECTION
SERVICE! ***

From surrounding surgeries.
JUST PHONE US ON 239 3139 with your requirements. We will process your prescription with the surgery.

All you do is COLLECT IT from us, or we can deliver to your home if needed.

You can e mail us with requirements;
Ratbychemistltd@aol.com



Pictured are Ratby Ramblers with the Lord Mayor (3rd from left, back row)

RATBY RAMBLERS

On our walk around Ratby's woodlands we had the pleasure of the company of Councillor Jeff Bannister, the Lord Mayor of Hinckley and Bosworth Borough, who kindly accepted an invitation to join us. Being a walker himself he was familiar with the Burroughs area, but we took the opportunity to point out to him the memorial stone dedicated to the 28 victims of the Bali bombing of October 12th 2002, and the Owl Seat carved by Isabel Lynam.

He greatly appreciated the beauty and peace of the whole area and expressed a desire to join us on another of our walks in the future. We rounded off the walk with a social gathering at one of the local pubs.

Ten members of the group enjoyed five days walking around the Whitby area during the summer, including the walk along the coastal path to Robin Hood's Bay.

LETTERS and ARTICLES

We welcome letters and articles, but reserve the right to edit them.

Your name and address must be supplied, but you may ask for them to be withheld.



OAKLANDS RIDING SCHOOL



WE CATER FOR EVERYONE FROM
THE NOVICE TO EXPERIENCED RIDER

All weather riding area

Ring Julie on 238 7570

PABARI'S RATBY NEWS

5 STATION ROAD RATBY

0116 239 3287

For the Largest Selection in Ratby of
BEERS WINES and Spirits

**A VAST CHOICE OF CONFECTIONERY &
SOFT DRINKS**

**A LARGE VARIETY OF GREETING CARDS,
WRAPPING PAPER and STATIONERY**

**NEWSPAPERS and MAGAZINES
DELIVERED TO YOUR DOOR DAILY**

We are Agents for
SKETCHLEY DRY CLEANING

Video rental and Photocopying
OPEN Monday-Friday 6.15-1pm. 2.30-10pm
Saturday 6.15-10pm
Sunday 7.30-2pm. 7pm-9pm

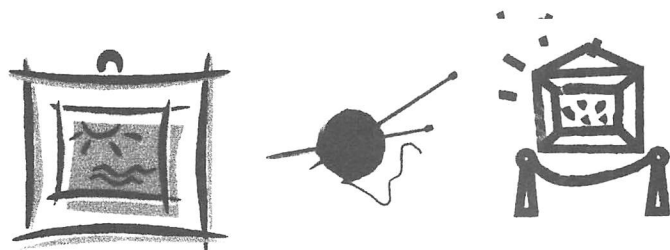
ART EXHIBITION and CRAFT FAIR

Following on from their successful event last year, Ratby Village Society Anti-Litter Group will be showing off the work of talented villagers at their Art Exhibition and Craft Fair on Sunday November 16th in the Village Hall, Main Street.

The event is open from 11 a.m. to 3 p.m. Admission is free and refreshments will be available.

Work on display will include drawings and paintings, cards, jewellery, quilting, needlework, computerised images set onto canvas, woodcrafts, cakes and confectionary.

We invite everyone to come along, soak up the atmosphere, meet up with friends and make Christmas gift buying an enjoyable experience.



A. GOODWIN

CARPENTRY, JOINERY &
PROPERTY REPAIRS

0116 2387316 OR
MOBILE 0777 987 2211

FITTED KITCHENS, BEDROOMS & BATHROOMS

PLUMBING

TIMBER & UPVC WINDOWS / DOORS &
PORCHES

FENCING & GATES

DECORATING, FLOOR & WALL TILING

PLASTERING & COVING

FASCIAS / SOFFITS & GUTTERING

SOLID & LAMINATE FLOORING

RADIATOR COVERS

PLUS ALL PROPERTY MAINTENANCE & REPAIRS

NO JOB TOO SMALL

RATBY METHODIST CHURCH

'The Way We Were'

If you enjoyed the 'Ratby Ritz', make sure you keep an evening free for 'The Way We Were' on November 8th.

All proceeds will go to 'The Smile Train', which works in countries that are desperately poor, like Ethiopia, Rwanda and India. It provides free cleft lip and palate surgery to the thousands of babies born with this terrible disfigurement which leaves them unable to eat properly. Often the family cannot afford surgery because they are living close to starvation and in some cases, these children are treated as outcasts and abandoned. Surgery allows the child a second chance at life - this time to live it normally.

'The Way We Were' will be a variety of Music Hall and War Time favourite songs, along with a spot of supper. Remember Spam? (Not the email type!)

Sing along if you wish, join in a bit of old time dancing, enjoy the spectacle (be prepared for a laugh) of Ratby's version of some of the favourite variety songs and routines and - don't forget your ration book.



TheSmileTrain
Changing The World One Smile At A Time



A.H. COLEY

Plumbing and Heating Repairs
New Installations, Bathrooms, Showers

For a full range of Services contact;
4 Saxons Rise
RATBY LE6 0NF

Telephone 239 4277

Village Society Notes

In August Jill Cawrey spent an evening taking us through her 'ABC of Quilting'. She brought with her a whole array of quilts which she had made including some examination pieces. Not only did we marvel at her competence with needle and thread but also at her clever designs, colour sense and the artistry required for each piece of work.

She seemed able to produce quilts for each letter of the alphabet, as the title of her talk suggested, some small, some so big that a tall member of the audience had to assist in the display! Each person there must have had their favourites but mine were:-

C - Claude Monet's Garden - made for an exhibition at Kew

H - Hollow Cubes - producing a three-dimensional illusion

M - Map of Leicestershire - including hunting scenes and the National Forest

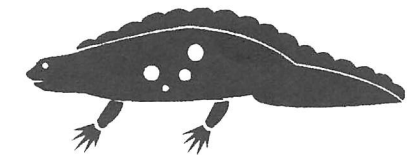
T - Trees - winter trees under snow, after visiting a friend in Alaska

Y - Year 2000 - a millennium project with blocks recording happenings in each month of that year

Z - Zebra - made in answer to a challenge set involving difficult fabrics

The evening provided something of interest to everyone and showed just what can be achieved with a little imagination, nimble fingers and perseverance.
Well done, Jill.

Next meeting - Tuesday November 18th.
"The Baldwin Boat Trust" - with Anne Halsey.



POND DIPPING and DRIPPING RATBY COMMUNITY ORCHARD

This year's annual pond dipping attracted the largest number of 'dippers' ever. It was great to see so many children engrossed in exploring the pond life we discovered.

Neil and Kay from Leicestershire and Rutland Wildlife Trust came along to help us identify the finds.

We saw a female Southern Hawker dragon fly laying eggs on the reeds, and learned that the nymphs live for a year in the pond before emerging as a full grown dragonfly. We found amongst other wild-life a record number of ramshorn snails, young frogs, smooth newts and whirligig and water beetles. We saw our first mayfly nymph.

Pictured is Neil Talbot from the Wildlife Trust helping with identification.



THE SERVICE GARAGE

MAIN STREET, RATBY
M.O.T TESTS

CARS (PETROL and DIESEL)

M.O.T. HOURS 9.00-4.15 Monday-Friday
Closed for lunch 1-2

TELEPHONE 239 4966

JULIE'S
HAIRDRESSING
MAIN STREET RATBY

Traditional and Modern Styling

Telephone 239 2406

LETTERS TO THE EDITOR

Dear Editor,

I cannot begin to guess whether the Village Design Statement has yet taken effect, but one prominent building on Main Street, namely the Fish and Chip Shop, recently has undergone a welcome transformation.

The formerly -painted brickwork of the shop frontage has been clad in a pleasant pastel shade of tiles.

A pity about the retention of the existing multi-colour fascia, but thanks, just the same, for what has been achieved.

Sincerely,
Hoz.
(address supplied)

RATBY CHURCH FETE

Thanks to everyone who supported us! Despite the weather £2000 was raised.



SUMMER-21st CENTURY STYLE (The Worst Summer Since 2007)

I think I saw the sun the other day.
I may be wrong, I often am,
but skies are still a darker shade of grey.
English summer? What a sham.

The other day I almost saw the sun
-unless, of course, it was a hoax.
A monsoon season's just begun;
Mother Nature's full of jokes!

Off track Gulf Stream is to blame
for low pressure which it lends,
but one constant does remain
-the warmth of many loving friends.

HOZ

Heathbrook Applecake Pudding

Ingredients

3-4 cooking apples (plant an apple tree in your garden and grow your own!) *
225g (8oz) self-raising flour
125g (4 oz) golden caster sugar
125g (4 oz) butter
2 medium eggs
Small amount of milk to mix.

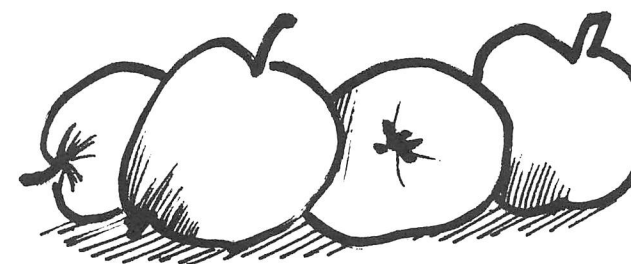
Method

1. Preheat the oven to 180C/350F/gas4
2. Put the flour into a mixing bowl and add sugar and chopped up butter. (this is not to be creamed or rubbed in, just chopped into lumps)
3. Peel the apples and slice them into the mixture.
4. Stir in the beaten eggs and enough milk to make a stiff lumpy batter.
5. Place the mixture into a greased tin and bake for one hour.

Serve hot with custard.

Graville

*Why not pop down to the Community Orchard and pick some cooking apples? Try Annie Elizabeth, Golden Spire, Keswick Codlin, Lord Derby or Newton Wonder.



"Everything From A Blown Fuse To A Complete Rewire"

PAULS QUALITY ELECTRICS

Your Local, Fully Qualified City & Guilds
ELECTRICIAN



Upgrading Old Fuse Boxes - Rewires - Alarm Systems
New Sockets & Lighting - All Domestic & Commercial Electrics

Call Paul Rumble on: (0116) 2872338

**GAS
APPLIANCE
SERVICES**

- Appliance Servicing and Installation
- Breakdown and Repair Services
- Plumbing and Heating Installation
- Kitchen & Bathroom Design and Installation
- Quality Guaranteed by Experienced Engineers



YOUR DOMESTIC GAS BOILER SERVICED

6 SAXONS RISE, RATBY, LEICS. LE6 0NF
■ Tel: 0116 2393662



DEADLINE for issue 133 DECEMBER/JANUARY 2008/9 FRIDAY 14th NOVEMBER

EDITOR 239 3367

ADVERTS 239 3279

ARTICLES 239 4873

Articles may be sent to 3 Ingle Drive
Or Email: sueboud@hotmail.com



Porter's Discount Carpets

121/3 STATION ROAD, RATBY

TELEPHONE 239 3238 or 239 5202. MOBILE 07860 551142

QUALITY AT THE
RIGHT PRICE



Laminated Flooring

FREE FITTING
ON ALL CARPETS
EXCEPT REMNANTS



GEORGIAN
CARPETS



Pick up your euros
and US dollars at
Ratby
Post Office branch

No commission to pay
No need to pre-order

50 EURO

150

POST OFFICE

50 EURO

