

Wot!

About Ratby

Now four years old

Published by Ratby Scout Group

OCTOBER 1990

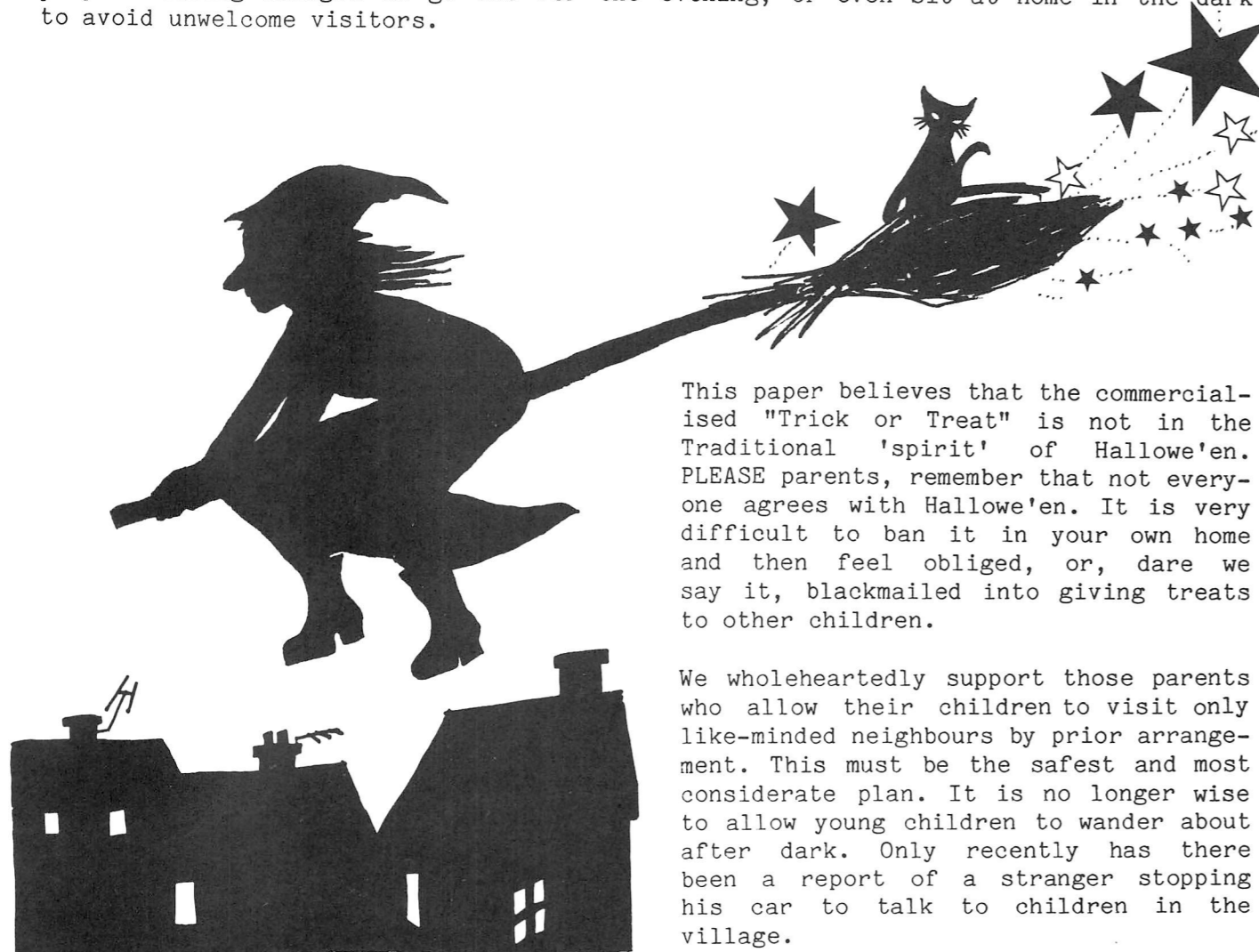
ISSUE 24

Hubble Bubble... Here comes Trouble !!

Autumn is here, and plans for traditional celebrations are underway.

Every year we remind readers to look after their pets on Bonfire Night - we make no apologies for mentioning it again!

Over the years 'WOT' has received several letters about Hallowe'en. There are repeats of flour being thrown at doors, elderly people being frightened, and damage to cars and property, all supposed to be under the heading of 'trick'. We have heard of people feeling obliged to go out for the evening, or even sit at home in the dark to avoid unwelcome visitors.



This paper believes that the commercialised "Trick or Treat" is not in the Traditional 'spirit' of Hallowe'en. PLEASE parents, remember that not everyone agrees with Hallowe'en. It is very difficult to ban it in your own home and then feel obliged, or, dare we say it, blackmailed into giving treats to other children.

We wholeheartedly support those parents who allow their children to visit only like-minded neighbours by prior arrangement. This must be the safest and most considerate plan. It is no longer wise to allow young children to wander about after dark. Only recently has there been a report of a stranger stopping his car to talk to children in the village.



PHILIPS

BUY A PHILIPS VIDEO OR TV...SAVE ON PHILIPS BSB SATELLITE SYSTEMS

UP TO £80 OFF A PHILIPS BSB SATELLITE SYSTEM

WHEN YOU BUY A SELECTED PHILIPS TV OR VIDEO....

OFFER ENDS 1.12.90

PHILIPS TUNES YOU INTO 5 NEW BSB CHANNELS

THE FUTURE IS PHILIPS

CALL IN NOW FOR FULL DETAILS

DON'T FORGET OUR PRICE MATCH GUARANTEE!

27 STATION ROAD, RATBY

Tel. 394544

— CLOSED WEDNESDAY AFTERNOONS —



The views expressed are the views of the individual contributors and do not necessarily reflect the views of the publishers.

Dear Editor,

Calverton Close
Ratby, LE6 ONT

An article in the last issue of WOT asks "Where have all the children gone?" The answer is - to the end of Calverton Close where they stage the Summer Mini Olympics. There they compete in such disciplines as football, handball, netball, cricket, tennis, golf, roller skate relay, skateboard slalom, scooter marathon, dare-devil cycling and tree climbing (with the consequent breaking of branches).

In these sad days of child abduction I am quite in sympathy with parents who do not want their children to be half a mile away from home at the designated play areas but it does seem that for every child who lives in Calverton Close, there are two more who do not. Perhaps they come from Nicholas Drive, Danehill or Ferndale Drive where it is too dangerous to play in the road because of the Big Boys with their Big Toys - Ford Sierras and the like - who daily play their own games of "Cutting Corners on Two Wheels" and "Beating the Speed Limit".

Yours sincerely,
H.A. Gamble



Editors comment: I'm glad that I have changed my Sierra!

Dear Mr. Sims,

"Lest we Forget"

Following on the discovery of the absence of the name of Cpl Colin Kinton Smith from the Ratby War Memorial, I feel that I must also call to your attention the following inscription on a memorial stone in Ratby Churchyard.

"I KNOW THAT HE SHALL RISE AGAIN
CAPTAIN GEORGE WILLIAM ASHBY
6 Bn LONDON REGIMENT, SON OF THE ABOVE
(WILLIAM ASHBY)
BORN AT OLD HAYES. SEPTEMBER 15TH
1887
KILLED IN ACTION IN FRANCE SEPTEMBER
25TH 1915"

The above date is the date of the battle of LOOS in which the LONDON TERRITORIALS actually advanced for 4 miles across heavily fortified ground on the first day of the attack before

being completely cut off by German artillery fire.

The above name is also absent from the War Memorial.

Yours sincerely,

"Old Bill"

Eds note:- It appears that for a name to be on the War Memorial the person must have had a Ratby address at the time of their death. Can anyone shed any light on Mr Ashby's case?

★ LETTERS ★

Dear Sir,

Remembrance Day Parade, Ratby - Sunday
11th November 1990

As in previous years, the above parade will consist of the Ratby Band, followed by the Royal British Legion, who in turn will be followed by Scouts, Guides, Cubs, Brownies and other voluntary and youth organisations. However, it has been decided that this year the route will be shortened and thus the parade will march off a little later.

The parade will now form up on the service road at the top of Main Street at the junction with Danehill and will march off at 10.30 a.m. The route will be down Main Street, turning left up Church Lane to the Parish Church, arriving at about 10.40 a.m.

After the service, the parade will form up outside the church, on Church Lane at approximately 11.30 a.m. It will march down Main Street, halt and face the War Memorial, whereupon wreath laying will take place. During this period the road is closed to traffic for about five minutes.

Following the wreath laying, with the exception of the band and the RBL, the parade is dismissed. The band and the RBL then march up Burroughs Road, halt at the Plough Public House and fall out.

Yours faithfully,

A.G. Norman
Branch Secretary



On Tuesday 31st July, Ratby library was packed to the gunwales with over 40 pirates bold!! The children were entertained with thrilling stories of piratical adventures on the high seas. Afterwards they were transformed into pirates themselves - making skull and crossbone hats and eye patches. Captain Lisa Goodwin-Smith and her two crew members had worked hard preparing the session!

Afterwards there was the hunt for pirates gold and some energetic games before the hot and excited pirates shipped anchor for home.

The stories told were:-

One Eyed Jake - by Pat Hutchins
Captain Teachum's buried Treasure by Paul Carter
The Bag of Wind by Gerald Rose.

FRIDAY
OCTOBER 19th
in the afternoon at the school

balloons only 50p

prize for the greatest distance

GREAT BALLOON RACE

RATBY PRIMARY SCHOOL ASSOCIATION

RATBY PRIMARY SCHOOL ASSOCIATION
HALF PAGE SPONSORED BY
C&R PRINTING SERVICES, TYRRELL ST., LEICESTER

Heading North

Wot would like to thank Mike and Ann of the Railway Inn for all their support in the past and wish them well for the future in their new Pub.

Bottle Bank

Did you know? Budgens have recently installed a 'Bottle Bank' on their Car Park!

RATBY FARES ON BUSES BETWEEN RATBY AND LEICESTER

There seems to have been some confusion recently about the use of return tickets on buses. A representative from Leicester City Bus has stated that a mutual agreement exists between Midland Fox and Leicester City Bus to accept return tickets issued by either company on the circular routes 111 - 116. However there are no such agreements on other services where only one company operates

So if you catch a Leicester City Bus No. 254 into Leicester, you should use your return ticket on the 254 service to get home. Some confusion has arisen because obliging Leicester City Bus drivers on the circular route have accepted return tickets from the 254 route as a favour to passengers.

Brookvale High School Computer Room

John Florance of BBC Radio Leicester entertained and amused a library full of parents with his hilarious stores of things that can go wrong on radio, at the annual P.T.A. meeting on September 12th.

He confessed to being totally ignorant about computers, but felt reasonably confident that he could cut the ceremonial ribbon to officially open the School's new Computer Room.

Some of the school pupils were present to demonstrate the impressive computer network.

Afterwards there were refreshments, and no lack of volunteers for the Committee.

VISIT TO THE JOINT CUB CAMP '90

We visited the camp at Willesley on the Saturday night for the camp-fire. The site was very nice, lots of room and extensive areas for playing. There was a permanent warden on duty. On arriving the boys were having a great time playing a "wide game".

There were 23 boys and 11 leaders and whilst we were there they had a variety of team games, which Ray had organised - basketball, ball in a bucket, quoits, magnet fish, ball in a metal tube, football goal. Nothing expensive but all very enjoyable.

At 8.30 we had the camp-fire where another pack and some Guides joined us. Ray dressed up in a very bright shiny jacket and fez. He organised the singing for an hour and then everyone had hot-dogs and pop which John and Paul "C" had cooked, with Andrew keeping a watchful eye on the pair of them!

They had lovely weather and from what we saw, don't ever worry about your sons, --they love it!

Gwen & Roy.



HIS & HERS LADIES &

GENTS HAIR DRESSING

OAPs welcome any day at reduced rates

STYLING · BLOW DRYING
COLOURING · SETTING
TRIMMING · PERMING

Tuesday to Saturday
Appointments not always necessary
156 Station Road, Ratby Tel. 394429

THE LIBRARY

Wishes to thank everyone who completed and returned the survey form contained in the last issue of WOT.

Over 200 were returned. An excellent response. These are now being analysed and the results collated.

Findings of the survey will be published in the next issue.

ELECTRAPOWER

*Industrial, Domestic & Commercial
Electrical Installations*

M.L. Mutton

15 HOLMEFIELD AVENUE EAST LEICESTER FOREST EAST
TELEPHONE (0533) 825147

RATBY POST OFFICE

Main Street, Ratby

**Newsagent . Confectionery.
Tobacco.**

PHOTOCOPY SERVICE GREETINGS CARDS

Hallmark, Rustcraft etc.

SHOE REPAIR AGENTS OPEN 7 DAYS

Tel. 393001.



BLUE BELL SERVICE STATION

★ Unleaded petrol on sale now ★
Leicester Road, Groby
Telephone 876850

Unigas Stockist
Fina Petrol and Oil
Sweets, Cigs. and
Accessories
Car Wash Facilities

1st Ratby Brownies



It's now nearly 2 years ago that I was asked to consider taking over 1st Ratby Brownies, as Angela Barbour had run it for many years and had decided to finish running a pack and have more time for her role as District Commissioner. It was with some concern that I agreed to 'have a go', as I knew how well Angela had run the pack, and how respected she was by the girls and mums. But it has proved to be a super fun-packed experience, and on the whole the girls are a very happy, well-behaved group.

We've had a very busy programme which has included a variety of things besides the usual Brownie journeywork and the weekly ceremonies such as Brownie Ring etc. To name but a few we've had a health and beauty demonstration, keep-fit evening, a trip to Alton Towers, been blackberrying, an origami demonstration, made and sold items for the school Christmas fete, knitted squares and produced 3 knee blankets for a local nursing home, made our own mini Xmas cakes (all beautifully decorated), been to a pantomime, roller boating, country dancing and strawberry picking.

And now we've just returned from what, for me, has been the highlight of the year - a 4 day Pack Holiday at Oaks in Charnwood. Angela Barbour arranged this for us, and worked extremely hard before, as well as on the holiday to made it as successful as it was. The girls were kept very busy with plenty of activities including sweetmaking, making plastercast models, sewing miniature cats, and then as our theme was Alice In Wonderland, we had a Mad Hatter's Tea Party, to which the Ratby Rainbows and our own husbands and children came. The Mad Hatter was incredible - I'm sure the girls will never forget her!! We also went out to Nottingham for the day - to visit the castle and museum, we went 10 pin bowling - and then finished up at McDonalds for a surprise birthday party for a delighted little Brownie who was 8 that day. Pack holiday was hard work for the girls as well as us leaders - some couldn't believe that they had to cook, wash pots, sweep floors, and clean the loos! but it was very good fun, despite the heat, the wasps and their stings, the sour milk and the bus that was over an hour late taking us. Also we know all those 21 girls so well now. Thanks again to Angela who made it all possible, and to Anne and Carol who were the slaves of the kitchen and did a fantastic job.

All the hard work and preparation that goes into the running of the pack is well worth it, although I must thank Carol Wilcox and Pauline French for their help as "Mum volunteers" or Unit Helpers as they are called - the pack wouldn't run without them. And finally a big thank-you to Anne Chippendale who has been my Tawny Owl for the past 18 months and has done a super job - we are sorry to lose you.

Looking forward to another busy term and our main division event on September 15th - Brownie Revelsa whole day of fun, crafts and games, shared with lots and lots of Brownies from nearby places, at Groby College.

Brown Owl - 1st Ratby Brownies

Maryllyn Smith

**SPONSORED BY SAINT
BROS. TRANSPORT**

KEN TOMKINS

General Builder
Alterations and Extensions
PROPERTY REPAIRS

93 Gynsill Lane, Anstey, Leicester
Telephone: 871698

ALL HOURS CHEM - DRY
RESIDENTIAL AND COMMERCIAL
CARPET CLEANING

- MOST CARPETS DRY IN 60 MINUTES
- NO STEAM OR SHAMPOO
- REMOVES STUBBORN STAINS
- NO STICKY RESIDUE
- ECONOMICAL

9.00 till 5.00 Telephone: Leicester 387316
Night & Weekend Telephone: Coalville 37032



Ratby is a very pleasant place to live in and has a relatively low level of crime. But burglary does occur occasionally and is very unpleasant when it happens to you. The Parish Council supports Neighbourhood Watch Schemes but there is much that you can do to deter burglars.

1. Whenever you go out, make sure that you have closed and locked all doors and windows.
2. A window lock should ideally be fitted to all open windows, but especially to all opening ground floor windows and any other windows that can be reached from flat roofs, drain pipes etc. Locks are available to fit almost every type of window. If, however, your house is fitted with UPVC window frames, the manufacturers should be consulted as to what locks are appropriate.
3. Louvre windows are especially vulnerable because the glass slats can be easily removed from the frames. Glue the slats in place with an epoxy resin (e.g. "Araldite") and fit special louvre locks. Or better still, replace them with fixed glass.
4. If you usually leave your house by the front door, secure the door with a 5-lever mortice lock in addition to any other locks that are already fitted. If there are

Window locks and door locks can be purchased from master locksmiths and good DIY stores and are easily fitted by the competent handyman, although fitting services are available. For about £50 or so, the average householder can substantially improve the security

If you have any queries or concerns regarding your domestic security arrangements, contact your local police officer, P.C. John Alexander through Beaumont Leys Police Station or your local police Prevention Officer, P.C. Jim Bott, at Beaumont Leys Police Station, the telephone number for both is 530066.

**** 25 YEARS EXPERIENCE ! ****

Opening Times
 Mon. - 6 - 11.30
 Thurs. - 6 - 11.45
 Friday - 11.30 - 1.30 a.m.
 5.00 - 12 p.m.
 Sat. - 12 - 1.30 a.m.
 6 - 12 p.m.

Opening hours - 9 - 5 every day
Closed on Sunday

ANTRON®

STAINMASTER®

CARPET CERTIFIED BY DU PONT



UNDERLAY
£1.99
sq. yd.



Ratby Parish Council

Chapel Lane and Berrys Lane

The Divisional Surveyor has replied to letters from the Parish Council stating that these roads would be treated for weeds. Chapel Lane and Berrys Lane are currently scheduled for a quarterly sweep, but a special manual sweeping was to be arranged. The sweeping frequency would then be reviewed to establish whether greater frequency of sweeping would be appropriate.

Gulleys in Ratby have been emptied once this year, and several defects found will be rectified.

Traffic Concerns

Councillors John Smalley and Charles Rogers with the Clerk met with Mr T Thompson, Director of Planning and Transportation, Leicestershire County Council, to discuss traffic problems in the village. County Councillor Mrs Pat Butler was present.

Pavement Widening opposite School

The Council requested that this should be undertaken as a matter of urgency. The Parish Council had received a letter in September 1989 stating that this proposal had been considered for inclusion in a County-wide programme for minor works in September 1989, but no further information had since been received.

Mr Thompson noted this request. The Council also asked that the provision of a barrier at the end of Church Lane to prevent children from running straight out onto the road should be given a high priority, together with the urgently needed access steps to the flashing school warning light.

Proposed widening of Station Road

This scheme now ranks no. 22 in the minor improvements priority list, and should be implemented within the next three years. Mr Thompson stated that this should alleviate current parking problems, and that the future safely-parked cars should act as a natural traffic calming measure.

Proposed new Access Road into Church Farm Estate

The Parish Council has pressed for traffic calming measures to be introduced at the design stage. Mr Thompson said that possibly a 20 m.p.h. speed limit would have to be introduced. He expressed doubts about ramps across the road, as there had been a fatal accident involving one elsewhere in the country.

Footways

Mr Thompson noted the poor state of footways in Ratby. Work on installing cable T.V. network in the village is unlikely to start for at least 4 years.

M1 Motorway

Widening of the motorway here is not likely for at least 10 years.

Traffic Survey

There is to be a traffic survey during peak hours, in which vehicles using Danehill will be monitored.

Recreation Areas

Tree planting at Ferndale Drive

During National Tree Planting Week, November 24th - December 2nd, it is hoped to plant new hedgerow and trees around the recreation area. Ratby Primary School children will be involved during the weekdays. The Parish Council are planning a Community Planting Day on Saturday December 1st. Experts will be on hand, with everything we need. Watch out for posters nearer the day. We hope lots of you will come along and 'muck in'.

RATBY PRIVATE HIRE

ANY DISTANCE
PARCELS ... AIRPORTS

PENSIONERS TOKEN SCHEME

tel. 386905 OR 0860/538355

Ratby Parish Council

Public Meeting

There will be an open meeting arranged during November for everyone interested in getting involved in village improvements and landscaping. This will give everyone a chance to find out about existing commitments and proposals and make suggestions for the future. Look out for notices of the meeting.

Play Equipment

The Parish Council has agreed to purchase a log cabin slide for Ferndale Drive to replace the old slide, which is now removed. This will be for older children, and it is hoped that it will take some of the pressure off the very popular playhouse. The slide will cost £2,585. Quotations for safety surfacing beneath the slide have been obtained. The cheapest being in excess of £4,000. There is no money in the current financial year to provide this.

New chains have been purchased for the swings on the Burroughs Road Recreation area.

Misuse and damage on recreation areas

The Council has received reports of bad behaviour and vandalism during the summer. Teenagers some from neighbouring villages have been discovered sleeping out at Ferndale Drive, having deceived their parents into thinking they were with friends. There have been allegations of drug-taking and evidence of alcohol consumption.

Dogs

A young child has been bitten by a dog at Ferndale Drive Play area. Dogs should be on a lead at all times in recreation areas, and in fields where livestock are grazing!.



COUNTRY STYLE WINDOWS



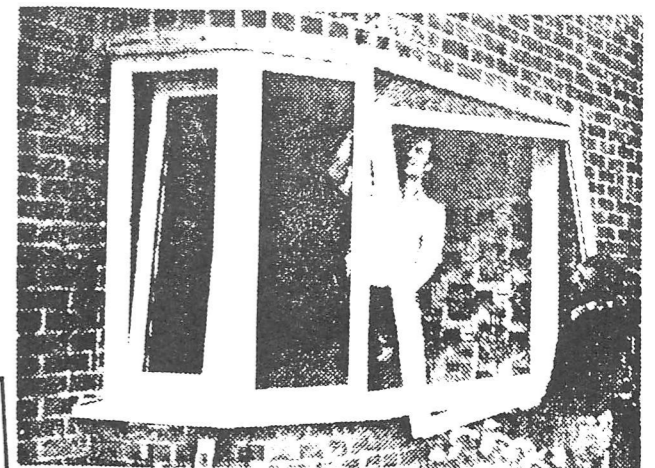
SUPPLIERS & INSTALLERS OF "UPVC" DOOR & WINDOW SYSTEMS

ALSO
SUPPLIERS TO BUILDING TRADE.
SUPPLIERS FOR NEW EXTENSIONS,
ALTERATIONS. SUPPLIERS OF PORCHES,
BAYS PATIOS. 10 YEARS EXPERIENCE
IN UPVC INDUSTRY.
**FREE ESTIMATES + ADVICE
+ SURVEYS.**
SMALL FAMILY BUSINESS
"BY LOCAL PEOPLE THAT CARE"
**132 STAMFORD STREET,
RATBY, LEICESTER.**

**CAVITY WALL & LOFT
INSULATION INSTALLERS**

**EARL SHILTON
93 45826**

**LEICESTER
386339**



AN INTERVIEW WITH MICHAEL BALL

My mother was Cynthia Ball, nee Harrison. She spoke to Bill Baker, who as a result of an injury (he fell off a farm cart as a lad) was a little simple. He was in the habit of telling tall stories.

Anyway he said he had had a rotten day. He said he had just parachuted out of the exhaust of a Spitfire!

My mother wrote to my father, who at the time, was stationed in Gibraltar. In her letter she wrote that Bill Baker had told her he had parachuted out of the exhaust of a spitfire.

This was of course censored. They were trying to prevent the Germans from getting some secret information - a new way of leaving an aircraft perhaps?

There was a great chunk cut out. My mother still has the post card.

In 1940 the Parish Council were complaining at that time that people could not recognise the streets because the lighting had been reduced and one of the idiots on the Council complained that people didn't know how to get to Markfield because they had taken all the road signs down and it was requested that could they leave the sign propped up against the tree on the corner of Ludgate Pit.

They were also complaining to the local authority that kerbs, which had been painted white, needed to be more clearly marked as several people had had accidents because they couldn't see the kerb in the blackout.

MOORES of RATBY

88 STATION ROAD, RATBY
TEL: 393674

GENERAL GROCERIES & OFF LICENCE
HARDWARE & CONFECTIONERY

COAL - COALITE - UNIGAS
READYGAS - SUPERGAS - PARAFFIN

OPEN 7 DAYS A WEEK TILL 9.00 P.M.
ALL ORDERS WELCOME

TIME TO REMEMBER 50 Years Ago This Month



On 19th November 1940, the main village street of Kirby Muxloe was devastated by six German Land Mines.

The Free Church received a direct hit, the adjoining street, Barwell Road, was devastated by blast damage.

The next morning, local and national papers described the village of Kirby as the "most bombed village in England".

The photo illustrates bomb damage of the Leicester Mercury).

Editorial

Michael Ball has a most interesting explanation as to why Kirby was bombed. We would be interested in this happening.



age street of Kirby Muxloe was

hit, the adjoining street, Barwell

al papers described the village of

in Barwell Road (by kind permission

ng explanation as to why Kirby was

liance

PLEASE HELP

We are sure that the photos and stories of bygone times add to the enjoyment of reading Wot! for many people of all ages. If you can help by recounting experiences or loaning photos for publication, we would be very grateful. If you feel unable to write down your recollections, then we can help by doing this for you. Please contact us on any of the phone numbers below.

ADVERTISERS

BE SURE TO BOOK SPACE EARLY FOR THE CHRISTMAS EDITION. A LIMITED NUMBER OF ADVERTISERS WILL BE ABLE TO USE 'FESTIVE RED' TO ADD THAT CHRISTMAS CHEER.



DEADLINE FOR LETTERS
ARTICLES AND ADVERTS FOR
THE DECEMBER EDITION IS

THURSDAY 15TH NOVEMBER

ADVERTS PHONE 395179
ARTICLES PHONE 393279
EDITOR PHONE 393367

HOTLINE!! PHONE US ON 394873 OR
395179 WITH ANY NEWS ITEMS.

COMPETITION RESULT

THE BICYCLE SECURITY ALARM,
WORTH £20, DONATED BY P.C.
ALEXANDER WAS WON BY ALISON
POUNDER. THE JUDGES WERE UNAN-
IMOUS. WELL DONE ALISON!!

It'll soon be Halloween!

Keep sending us lots of pictures and jokes. Leave them in the library.

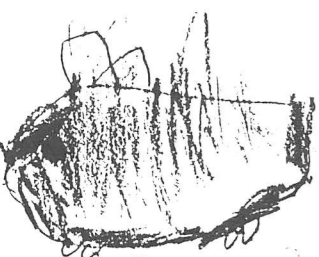


Jennifer age 5
COULSON



My Rabbit
POM POM

Hannah
Bland



My Guinea Pig
Boss Bland
Age 3



Alison
Tyler 8



School. Balls head.
coop. By Alison
Rat by. age 9 1/2 POUNDER



By Gary Ponder. age 7 1/2

Q. Why did the witch cross the Road.
A. To catch the Chicken!

Somebody's already done us a wordsearch why not have a go!



Which Witch is the odd one out???

SPONSORED BY:- KIRBYCO
Flat roof Specialists.
Earl Shilton 48769!!



Laura Jones

Sweet Saffron Rice



Ingredients:

- 8 oz Basmati Rice
- 2 oz Ghee (clarified butter will do take 2 oz butter leave it on a low heat until you see browning and salty sediments settling, pour off the clear fat, leaving sediments behind)
- 3 oz sugar
- 1 tablespoon Sultanas
- 1 tablespoon blanched silvered almonds
- 1 tablespoon blanched pistachio
- 1/2 teaspoon saffron threads
- 1/2 teaspoon turmeric
- 2 Cardomon pods
- 1 small stick of Cinnamon
- 1/2 pint water
- 1/4 teaspoon salt

Method:

Warm the saffron threads over a flame in a large metal spoon. Crumble the saffron into a cup of hot water. Wash the rice and leave it to soak for approx. 3 hours. Heat the ghee in an oven proof pot. When hot put in the whole spices, turmeric and rice. Add 1/2 pint of water and salt. Bring to boil and turn down the heat and let it cook for 5 minutes. Put the rest of the ingredients into the pot. Stir to mix. Put the pot into a hot oven for 20 minutes. Remove from oven and stir to mix. This dish is best served hot.

Recipe sent in by Mrs Farida Mukaddam

C. GEARY & SONS THE CHAMPION BAKERS



VISIT OUR OLDE WORLDE' SHOP

WEDDING, CELEBRATION & NOVELTY CAKES OUR SPECIALITY

C GEARY & SONS STATION ROAD, RATBY LEICESTER 386600

Grange Bakeries

SEE and TRY our range of ;

66 Varieties of Bread

34 Varieties of Cobs, Rolls, etc.

200 Varieties of Cakes and Pastries

'RUSTIC' WHOLEMEAL ALLINSON
HOVIS BEER BREAD & COBS BUN LOAVES
FANCY COBS REARSBY HEALTH BREAD FUDGE MALT BREAD
SPECKLE 'HIGH FIBRE' BREAD SESAME COBS & BAPS
MALT CRUNCH BREAD COBS COTTAGE LOAVES
FARMHOUSE LOAVES WHITE & BROWN COBS and ROLLS & TWINNIES
CHEESE & ONION BREAD FILLED COBS

IT HAS TO BE FRASER'S
FOR ALL YOUR PARTY
NEEDS AT HALLOWEEN
AND NOVEMBER 5TH...
PLUS OUR USUAL FRIENDLY
SERVICE FOR PROVISIONS,
COOKED MEATS, FRESH
FRUIT AND VEGETABLES.

10/12 MARKFIELD RD, RATBY...

FRASER'S
Standard
FIREWORKS
1990
BRITAIN'S FAVOURITE FIREWORKS
10/12 MARKFIELD, RD
RATBY

Remember, Remember ?



RATBY
CHURCH
SUNDAY
SCHOOL
AT
HOLYWELL
FARM

RATBY JAZZ BAND
which used to tour
the village
collecting money
for charity.
The Leicester Royal
Infirmary was
regularly supported.



Wilfred Gamble, Gordon and Eric Freeman, and Owen Lee on 'the road to the Burroughs Wood'. Showing the Statice Craft and Skittle Alley and Church School and Mr Lemmon's Out Door Beer Licence in the background.

PHOTOGRAPH BY COURTESY OF MR GARDNER OF STAMFORD STREET

Timecraft
WATCH AND CLOCK REPAIRS
6 BELL CLOSE,
RATBY,
LEICESTER.
Telephone: 395173
WORK GUARANTEED
Antique and Modern Clocks Repaired
Jewellery Repairs
Collection and Delivery Service
Timex Service Agent

Ratby Playgroup

To celebrate Ratby Playgroup's 21st birthday, all past workers are invited to our reunion party on Saturday 12th January. If you are interested and have not already been in contact, please telephone Lesley Chevin, 386605 or Lynne Evans, 386347 as soon as possible.

We would also like to borrow any old photos of Playgroup for a display. Can you help us out? If so, please ring Lesley or Lynne.

PABARI'S RATBY NEWS

FOR THE LARGEST SELECTION OF:
BEERS, WINES, SPIRITS, SOFT DRINKS

A VAST SELECTION OF CONFECTIONERY

NEWSPAPERS AND MAGAZINES
DELIVERED DAILY

ALL THE LATEST VIDEO TITLES NOW IN
PHOTOCOPYING - REDUCING + ENLARGING

COME IN AND SEE FOR YOURSELVES

OPEN TILL 10.00 p.m. MONDAY to SATURDAY
and TILL 2.00 p.m. SUNDAY
7.00 TILL 9.00 P.M. SUNDAY EVENING

BUILDING ROOFING REPAIRS

ALL TYPES UNDERTAKEN
FREE ESTIMATES
ALL WORK GUARANTEED

A.M. CURTIS
52 LEICESTER ROAD, GROBY
Telephone 870465



Other Playgroup Dates

Saturday 13th October. Rummage Sale
Welfare Hall 2 o'clock 10p
admission.

Friday 9th November. Toy Sale
Welfare Hall 7.30 10p
admission.
Look out for notices of where
to take your toys for sale.
Lots of bargains on the night!

Saturday 1st December. Christmas Fayre
Welfare Hall 10.30 10p
admission.

Please support our village Playgroup
events. Funds are needed constantly
to provide equipment for the children.



Sponsored by GLENFIELD WASTE



"We cover all areas"
(Leics.) 750252

SMALL AND LARGE SKIPS
SPECIALISTS IN DOMESTIC &
COMMERCIAL D.I.Y. &
GARDEN WASTE DISPOSAL
MILLHILL - ENDERBY - LEICESTER

SACHEVERALL TRUST

Situated on the south side of the Chancel in Ratby Church, lie the earthly remains of Henry Sacheverall, a Lancastrian Knight who died during the Wars of the Roses.

The ancestral home of the Sacheveralls was the village of Morley, just north of Derby. Henry's family were quite pious Catholics, and during the reign of Edward VI suffered considerably at the hands of the new Protestant cause in England.

Henry married his wife, Jane, daughter of Sir Henry Bradbourne, Knight, in 1576. Between the years 1578 and 1584, they were blessed with six children.

Shortly before 1600, Henry's first association with Ratby became apparent. Although the historical record is somewhat blurred, it would appear that soon after the birth of his youngest daughter Victoria in 1584, Henry married Elizabeth, the daughter of John Keys of Smalley in Derbyshire.

However despite the author's earnest research, it is quite apparent that at the time of this marriage his first wife Jane was still alive!

FIELD HEAD TRAVEL

Private Hire Cars & Parcel Delivery

I'll drive you anywhere

Our modern estate cars are equipped
with telephones & taxi radios

Please keep our card

MARKFIELD 242133

Gas
Appliance
Services

- Appliance Servicing and Installation
- Breakdown and Repair Services
- Plumbing and Heating Installation
- Kitchen & Bathroom Design and Installation
- Quality Guaranteed by Experienced Engineers




**YOUR DOMESTIC GAS
BOILER SERVICED**

6 SAXONS RISE, RATBY, LEICS. LE6 0NF

■ Tel: (0533) 393662






CHURCH BAZAAR

IN THE CHURCH ROOMS

SATURDAY 17th NOVEMBER

2.30 p.m.

ALL THE NORMAL ATTRACTIONS
PLUS SOME NEW ONES



Part of the marriage settlement made between Henry and his father-in-law John Keys was a deed in trust to the benefit of Henry Sacheverall to the property of the Manor House at Old Hayes, Ratby.

During his time at Ratby, Henry and his three sons, Manfred, Fernando and Valence, enjoyed the position of Lord of the Manor.

At the time of his death, Henry left a substantial sum of money, together with a parcel of land adjacent to Old Hayes Farm, known today as the charity field.

The deed of trust described in Henry's will required that monies raised from the annual lease of this land should be for the benefit of the poor, and young apprentices of the Parishes of Ratby-cum-Groby.

So to this day, during the month of November, the four trustees who are appointed by the Parish Councils of Ratby and Groby, the Rector, and the present-day owner of Old Hayes meet to decide how the gift shall be allocated for the coming year.

K&M FASHIONS

32 MAIN STREET · RATBY
TELEPHONE · LEICESTER 395244

GOOD RANGE OF CHILDRENS CLOTHES
AT COMPETITIVE PRICES
OPEN MON TO SAT 9.00 - 5.00

Threatened

I must confess whenever I read headlines such as £100,000 Green Fund set up" or "Leicester to be Environment City", I do get a little envious and even a little annoyed. Living in a "rural" village one expects to find it surrounded by green fields and trees. It seems to me that it is becoming more likely to find open green space, trees and fine landscaped areas in the city environment rather than in the countryside.

Regular attempts to improve the village environment has not always been welcomed by enthusiasm by those it is necessary to approach for approval. A recent proposal by Ratby Village Society to provide a shrub bed around the Jubilee Oak Tree was squashed by the Leicestershire County Council as "it would encourage the collection of litter". No thought was apparently given to the many times the L.C.C. or their sub-contractors have taken over the same piece of ground and planted tractors, diggers, caravans and other sundry implements with a border of spent tea bags to add variety to the design. The Parish Council and Village Society have over several years planted hundreds of spring flowering bulbs in the village (apparently much appreciated by residents) only to see their efforts thwarted by the highway maintenance gangs, even though the L.C.C. had been advised of the planting. You may remember the glorious display of daffodils and narcissus on the bank of the Primary School. They were there for one year.

It is a great disappointment when Ratby folk do something to improve their environment which is then spoilt by unthinking and uncaring individuals more popularly called "vandals". Many newly planted trees have been lost to the handiwork of these individuals. The flower tubs placed at each entrance to the village were overturned or plants stolen even before they were able to bloom. One wonders if we really deserve the efforts put in by some residents to improve our surroundings.

In recent years development proposals receiving planning approval will undoubtedly change the face of Ratby and its Parish, none more than the new A46 Bypass. Although physically it will not be sited within the Parish it could lead to more industrial development appearing on either side of the new road. No one developer would spend millions of pounds on acquiring land for this type of development and then not try to recoup some of the cost of selling off the land not required or themselves erect industrial units for speculative purposes.

Apart from the threat of more development, the impact on the environment of more traffic being encouraged into the area by the provision of yet another new road. No one seems to take into account the noise, fumes and intrusion extra traffic will introduce.

In 1983 a campaign was started to save Martinshaw Wood from being sold to

Taken in 1929 at the Junction of Groby Road, Markfield Road and Main Street.

These are referred to as Groby Lane, Markfield Lane and Ratby Lane and the junction is known as LUDGATE PIT CORNER.



PHOTOGRAPH BY COURTESY OF MR GARDNER OF STAMFORD STREET

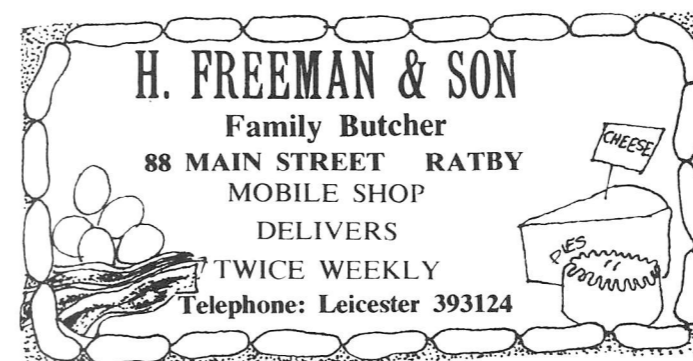
private commercial speculators. After much hard work the woods were purchased by the Woodland Trust thereby saving a vital oasis of peace and tranquility. Those involved in the campaign truly believed that the woods would remain untouched into the far distant future. But once again they could be threatened as before by the ever increasing appetite of the combustion engine. Too many drivers have complained about time consuming journeys so the easy way to solve that problem is to provide two extra lanes on the motorway.

Although the proposals for the Vic Berry unit will not be in Ratby Parish, if given approval could affect the village by virtue of noise, pollution, lorries with huge loads finding their way, by mistake of course, onto the village roads. This proposal is just one more stake in the heart of the countryside.

The last straw has now arrived with the unveiling of major plans backed by Blaby District Council involving twenty square miles on the west side of Leicester centred around the M1 and M69 motorways, including a leisure centre, 20 acres of industrial units, a new Alliance and Leicester Headquarters building and much more, all covering open land and encouraging more traffic. Near Leicester Forest East 190 acres of land will be released to hold 1300 houses. Already so many hedgerows and trees have been lost in the Beggars Lane development.

With all that we are doing to ourselves by not taking action against vandalism and with all that is occurring on the borders of and near to our Parish, one wonders what Ratby has in store for it in ten years time. Therefore is it unreasonable to feel envious and a little annoyed that Leicester is becoming a greener city than the villages surrounding it.

O.M. Smalley



THE SERVICE GARAGE

MAIN STREET, RATBY

YOUR LOCAL
M.O.T. TESTING
STATION

WHILE YOU WAIT

OR BY APPOINTMENT

Tel. 394966

ASK ABOUT OUR MOTORCYCLE
TESTING FACILITY

JULIE'S HAIRDRESSING

MAIN STREET, RATBY

Traditional & Modern
Styling

Telephone: 392406

AN INSPIRING BICYCLE RIDE

John and Elizabeth Kilmister of Ratby cycled an intrepid 50+ miles on Saturday 8th September. John was sponsored for more than £50, the money to be divided between Ratby Church and the Leicestershire Historic Churches Preservation Trust. The Trust gives grants to churches and chapels towards the cost of major fabric repairs.

John says the weather was perfect for cycling, and there were plenty of families out including some quite young children. There were refreshments at every Church and John managed to visit a grand total of 15 of them!

His favourites were the very old, and possibly Saxon Church at Foston where there were beautiful arched windows and Peatling Magna which recently had a new spire installed!

Well done John for your efforts at raising much-needed funds for the Ratby Church.