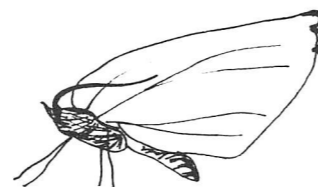


The small white butterfly can be seen in Spring and Summer.

Wot!

About Ratby



June 1998
Issue 70

PUBLISHED BY THE RATBY SCOUT GROUP

RATBY SCHOOL FETE

The sun shone as crowds flocked to the annual school fete on Saturday 9th May. More than £1100 was raised by the Parent Staff Association for school funds. Special Attraction this year was a police car and local village policeman, PC Rob Showell was on hand to show eager children how the technical equipment worked.

The newly-formed Ratby School Band played during the afternoon.
(See page two for photograph.)



Pictured is the "Money in the Jar" game.
From left to right; Alec Sides, Bradley Taylor, infant teacher Mrs Holland, Jack Hughes, Samuel Hughes, Mrs Diana Hughes and Oliver Frost.

Photograph and report by Sylvia Gant.

AVAILABLE NOW AT YOUR LOCAL

EURONICS CENTRE

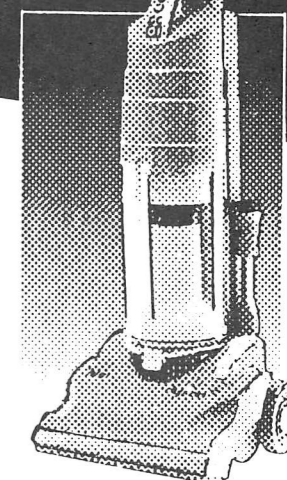
THERE'S A MEMBER OF THE DYSON FAMILY TO SUIT YOU!



NEW
dyson
dual cyclone technology

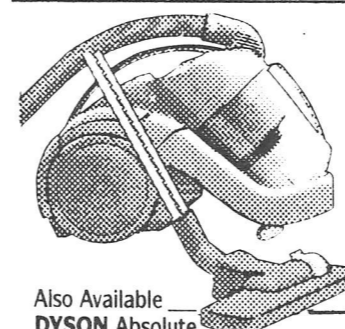
DYSON Upright Dual Cyclone Vacuum Cleaner
● No Loss of Suction
● Weighs 6.5Kg
● Ideal for Allergy Sufferers
● Adaptive Brush Control
● Easy to Store
● High Efficiency 700 Watt Motor
Model DC03

£279.99



DYSON Upright Dual Cyclone Vacuum Cleaner
● Removes and Retains More Dust ● 2 Electrostatic Filters
● 1200 Watt Motor ● Instant Hose/Wand reaches to top of stairs
● Automatic Safety Suction Control
Model DC01

£199.99



Also Available
DYSON Absolute
Model DC02
Absolute **£229.99**

DYSON
Dual Cyclone Cylinder Cleaner
● Removes and Retains More Dust ● 2 Electrostatic Filters
● Unique Stair-hugging Shape
● Automatic Safety Suction Control ● 1200 Watt Motor
Model DC02

£199.99

DYSON De Stijl
Model DC02
De Stijl **£249.99**

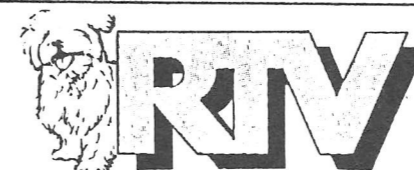
Also Available
DYSON Blue
Model DC01
(Blue) **£199.99**

DYSON Absolute
Model DC01
Absolute **£229.99**

DYSON De Stijl
Model DC01
De Stijl **£249.99**

**TRADE UP TO A DYSON
£30.00 TRADE IN**

We are independent retailers - with friendly local service and personal attention - but we're also members of EURONICS - Europe's biggest independent electrical buying group, which means we can offer you the very best deals on highest quality brand names.



23-27 Station Road, Ratby, Leicestershire LE6 0JQ
Tel: Leicester (0116) 2394544



- ◆ TOP BRANDS
- ◆ LOW PRICES
- ◆ SPECIAL OFFERS
- ◆ LOCAL DELIVERY
- ◆ GUARANTEED AFTER SALES SERVICE
- ◆ EXPERT STAFF

EURONICS
CENTRES
Discover the Difference



The new Ratby School Band with their music teacher Geoff Newman.

Photograph by Sylvia Gant.

Ratby Village Society

Rutland is the favourite county of RVS member Hoz who, in March, gave a slide show on the charm and delights of this unspoiled gem whose motto is 'So Much in So Little'. It is the smallest county in England 17 miles east to west and 18 miles north to south having a total population of 34,000 spread among 54 towns and villages -- the smallest of which houses only 18 people, and the largest town, Oakham, a mere 9,451. The second biggest town, famous for its public school, is Uppingham whose population is roughly equal to that of Ratby!

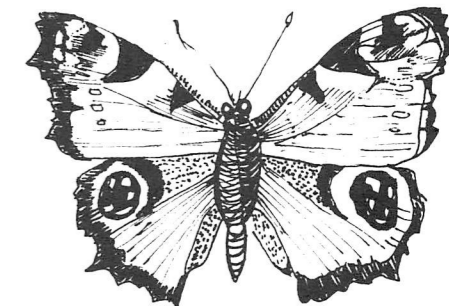
Following the Local Government reorganisation of 1974 it became a district of Leicestershire but won its independence again as a Shire County on 1st April 1997. Nowadays its main claim to fame is Rutland Water the 3,100 acre reservoir, opened in 1976, the largest man-made lake in Europe, responsible for the growth of a new industry tourism. Thankfully there is almost no heavy industry in Rutland, one exception being the cement works at Ketton. The extensive iron ore quarries had all closed by 1972 and the countryside restored. Rutland is an Anglo-Saxon word meaning red land hence the county being given over mainly to farming, including one most unusual variety (which Hoz discovered incidentally on one of his rambles) being an ostrich farm

Following on from that traditional type of slide presentation we were treated handsomely, in April, to one of Mr Brian Jeffs' spectacular Audio-Visual shows in which one picture fades out while another comes into focus, at the same time accompanied by a taped commentary with musical backing sympathetic to the theme being shown. During the wettest April on record we eagerly feasted our eyes on sun drenched scenes in Yugoslavia (before the tragic years of civil war) where Split in particular looked unbelievably beautiful; in Greece's largest island, Crete, steeped still in centuries old culture; in the 'real' Spain of Andulucia whose intricate Moorish architecture is a million miles removed from the stark concrete hotel monstrosities and

the markets of Marakesh where snake charmers entertain (here we heard on the spot sound track of voluble traders vying for custom) to the peace and charm of the Cornish fishing villages of Polperro, Mevegissey and Looe. For good measure there were two short nature sequences, in close up, shot nearer home -- 'Flower Serenade' and 'Whispering Grass', the latter accompanied by a cocktail style piano transcription of a 1940s song associated with the InkSpots. Not only was it an extremely polished presentation throughout but it contained some of the most stunning photography we have been privileged to enjoy in the Welfare Hall.

The June and July meetings will both be outdoor events. Tuesday 16th June will be a guided tour around Welford Road Cemetery in Leicester to view the ornate tombs of some of the City's most famous sons. On Sunday 19th July we shall pay a return visit to Hales View Farm at Cheadle where Les Oakes has his enormous and incredible collection of praphernalia.

The Peacock Butterfly is on the wing in August and September.



DE Verdun Children's Day Nursery, Newbold Verdon.

(10 minutes drive from Ratby).

Our highly qualified staff offer excellent care in a safe stimulating and happy environment.

Care from birth to school age. Full and flexible part time places available and we open all year round.

Registered with Leicestershire Social Services.

To come and meet us call:-

Jo Walsh R.G.N. H.V. S.N.Cert.
01455 828853

QUALITY LAMBSKINS
AT THE BOWRON
RIGHT
PRICE!

**Penthouse
Carpets Ltd.**

GEORGIAN CARPETS
ANTRON®
STAINMASTER®
CARPET CERTIFIED BY DU PONT

AXMINSTERS SCOTCHGARD
TWISTPILE BERBERS
SAXONY HUEGA TILES
SCULPTURED CUSHIONFLOOR
FLOTEX



SHOP AT HOME SERVICE
PORTER'S DISCOUNT
CARPETS

121/3 STATION ROAD
RATBY, LEICESTERSHIRE

Thousands of Patterns
to choose from
£3.99-£45.50 sq. yd.

NEW!
Scotchgard
STAINRELEASE



For all you budding David Bellamy's out there we have the course for you!! The Summer Wildlife Courses 1998 are aimed at those of you who have a basic interest in the environment and want to learn more about the wildlife and conservation habitats around you.

The Leicester Urban Fringe Countryside Management Project has teamed up with the British Trust for Conservation Volunteers to bring you this series of exciting and fun-packed conservation courses.

Samantha Forster of the LUFMCP adds "Earlier this year we saw the launch of the Leicester, Leicestershire and Rutland Bio-diversity Action Plan in which there are several wildlife habitats and species identified as being important to the area and in need of special attention and protection. We have devised these courses as a basic introduction to some of the habitats and wildlife identified in the BAP".

Dates for your diary:

21st June	Hedgerows
12th July	Ancient Trees
2nd August	Designing your own Community Wildlife Area
23rd August	Geology - a look at the rocks and fossils in your back yard

All the courses will be held at Whetstone Parish Council rooms, Cemetery Road, Whetstone. Each course will run from 10.45a.m. to 4.30p.m

All of the courses cost £7.00 per session, (£4.00 for unwaged). or £35.00 for all six (£20.00 unwaged). All courses will include a site visit except for the Bat course where all those attending will get the opportunity to make their own bat box.

For more information and a booking form please contact Samantha Forster at Leicestershire County Council on 0116 265 7264 or Neil Pilcher at the British Trust for Conservation Volunteers on 0116 255 3904.



Free 1st Hour

Melsway Driving School

Mel Shipley D.O.T. A.D.I. M.I.A.M.

All ages welcome . . . and nervous pupils

Learn to drive with Melsway.

Telephone : 2386149

3 Barton Close, Rathby



BEE - SECURE

PROPERTY MAINTENANCE
UPVC FACIAS SOFFITS GUTTERING

**ALSO SPECIALIST INSTALLERS OF
INTRUDER ALARM SYSTEMS
CCTV ACCESS CONTROL
SECURITY LIGHTING**

ALL WORK CARRIES A COMPREHENSIVE 12 MONTH GUARANTEE

OAP DISCOUNTS

MANY LOCAL REFERENCES AVAILABLE

TEL 0116 239 2329
MOBILE 0802 267 189

MEMORIES

THE MAGNIFICENT SEVEN !

Playing away at Willerby Waterleys, now the second team supplied one of the umpires on this occasion. Alex Scottton came along. Now I was having a good day behind the stumps, having been involved in taking four wickets and making myself more unpopular by whipping the bails off and probably on "reflection" with an over enthusiastic appeal, for a stumping.

Now we all knew that Alex's reaction to such an appeal was sometimes rather more instinctive than thoughtful and true to form up went Alex's finger, the trouble being poor old Alex was at the bowling end and as we all know a stumping decision is given by the square leg umpire. The next few moments were well tense to say the least. It was almost a choice who was going in the brook, me or Alex, fortunately their umpire gave the batsman out and defused the situation.



Saturday afternoon down on the Astill utility bus, destination, Peckleton. Dear old Stan Astill driving. On the way talking about our chances of winning. Stan encouraging one and all by offering 10/- (50p) to any batsman getting fifty runs. I rather think he knew it was a fairly safe bet.

Still, offer taken. Let battle commence. Now I was never outstanding with the bat so the bowling must have been poor. Anyway, I was going quite well having survived an appeal for obstructing the field. I was creeping dangerously close to claiming the ten bob. Stan I was told later denied the offer, but once again lady luck chose sides. I was run out for 49. Still we won the match.. So everyone returned home happy.



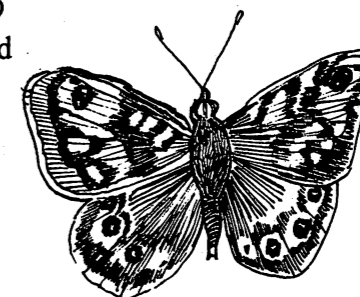
A Geary

Newcomers to Rathy may not realise that the village has an illustrious cricket tradition. In his book "A History of Leicestershire Cricket", E.E. Snow writes, "none can equal the record of Rathy, for this small village has so far produced seven men who have played for the County side". They were; F.J. Bowley, H.B. Bowley, W. Astill, T. Jayes, A. Shipman, W. Shipman, and J. Toon.

What is it that made Ratby such a fertile breeding ground for cricketers? In his later book, "Leicestershire Cricket from 1949-1977", E.E. Snow informs us that Leicestershire was one of the earliest counties where cricket was played by artisans. Frame-work knitting was the most important industry in the county from around 1640. It was apparently common for cottagers to begin work in the early morning, leaving the afternoons free to play and practise cricket, before returning to the frames in the evening. Snow concludes that this constant practice enabled them to become proficient at the game. This may explain the cricket tradition, but does not tell us why, even with its frame-work industry, Ratby should have produced so much talent in so short a period of time.

In the next issue we will include an article on Rathby's famous cricketers. We would also welcome articles about the present-day game, and photographs

Special thanks to Mrs Janet Gutteridge for the loan of her books.



The wall Butterfly can be seen in May and June, and a second brood in July and August.

Sponsored by Gas Appliance Services - Leicester

6 Saxons Rise, Rathy, Leicester LE6 0NF.
Tel: Office 0116-2393662

HIS & HERS

LADIES & GENTS HAIR DRESSING

OAPs welcome any day at reduced rates

**STYLING BLOW DRYING
COLOURING SETTING
TRIMMING PERMING**

Tuesday to Saturday
6.00am - 5.30pm Tuesday to Friday
6.00am - 12.30 Saturday

Appointments not always necessary

156 Station Road Ratby
Tel 2394429



Ratby Parish Council

Chairmans Report for the year ending 31st March 1998

We have had a number of changes during the year, not least the appointment of a new Clerk in March 1997 and has proved a great asset in preparing accounts and Balance Sheets in accordance with Accounting regulations.

Your parish Council have been urgently seeking an office and meeting room and we are continuing to do so.

During the year we entered into an agreement with Mr John Cawrey for a 14 year lease on the Burroughs Road Play Area which has now been fenced off and we have placed an order for more children's play equipment which will be installed as soon as it is delivered.

The Ferndale Leisure Area has been subjected to repeated vandalism and our thanks are due to our maintenance man, Peter Kazmierow who endeavours to carry out the repairs as soon as possible.

The Woodland Trust have purchased more land running from Burroughs Road to Markfield Road and they have planted it with trees and laid footpaths and bridleways to join up with Martinshaw Wood.

Our Leisure and Recreation Sub-committee have been very busy accepting small parcels of land for development and negotiating with the County Council for the pond on Taverner Drive. Many of our readers of the Leicester Mercury will have seen the photograph showing the pond and the area where some of the new trees will be planted and also a Totem Pole.

We have recently had a change of Policeman in the village, Mr Showell, a man and wife team who have made a big difference in the village and we are very pleased to see them.

During the year we also welcomed a new Councillor, Mr Alan Withers.

It is with regret that I report to you that our Assistant Maintenance man, Mr Mourice Norman, died very suddenly. I attended the funeral and your Parish Council sent a floral wreath. We have also sent a letter of condolence to Mrs Norman.

During the year we received a request from Groby Parish Council to move our Parish boundary. Your Council decided that there were insufficient reasons given to justify this and declined. The matter is currently with Hinckley & Bosworth Borough Council and your Council have made very clear to them their strong opposition to the idea.

We look forward in the coming year to ever closer relations with the Village Society, the Churches and Ratby Band and hope that we may all work together for the benefit of the people of Ratby.

Finally, I would like to express my thanks to my fellow Councillors for their hard work and support during the year.

g 31st March 1998

ast Mrs Maureen Martin was set to us, operating the computer with the new Audit and

e and meeting room and we are

ohn Cawrey for a 14 year lease on ed off and we have placed an order d as soon as it is delivered.

d vandalism and our thanks are due urs to carry out the repairs as

from Burroughs Road to Markfield hs and bridleways to join up with

ry busy accepting small parcels of cil to have it maintained. Many rner Drive development photograph, uit trees for the Community Orchard

ge - we now have Robert and Julia erence in the village and we are very

Alan Withers.

intenance man, Mr Mourice Norman h Council sent a floral wreath. We

i Council to move our Parish ent reasons given to justify this and orth Borough Council and your ition to the idea.

ons with the Village Society, the d hope that we may all work

Councillors for their hard work and

COMMUNITY ORCHARD

TAVERNER DRIVE
RATBY

Totem Pole Carving Event

Friday 12th. to Sunday 14th. June
at Taverner Drive, Ratby.

Paul Wood, sculptor will be carving a totem pole to be erected next to the pond on Taverner Drive using designs by children at Ratby Primary School. Come along and see the work being done at Taverner Drive.

Friday 12th June: Pole taken to the site, carving starts
Saturday 13th. June: Grand Event. 10.00am to 6.00pm Pole Carving, Pole Lathe Turner plus more (look out for posters for more details)
Sunday 14th. June: Carving finished off and pole to be erected. Come and lend a hand!!

Future Event
Pond construction Saturday 8th. & Sunday 9th. August

Tel 2394873 for more details.

GRASS CUTTING

The Parish Council would like to apologise for the state of various parts of the village/play areas which are in need of grass cutting and maintenance. We are pursuing this matter with the utmost urgency.

PIPS PRIVATE HIRE RATBY GROBY KIRBY MUXLOE

0116-23-93-818

Airports. Local & Distance

E.M.A.	£15
B'ham	£24
Luton	£35
H'row	£52

Green tokens taken

GAS APPLIANCE SERVICES

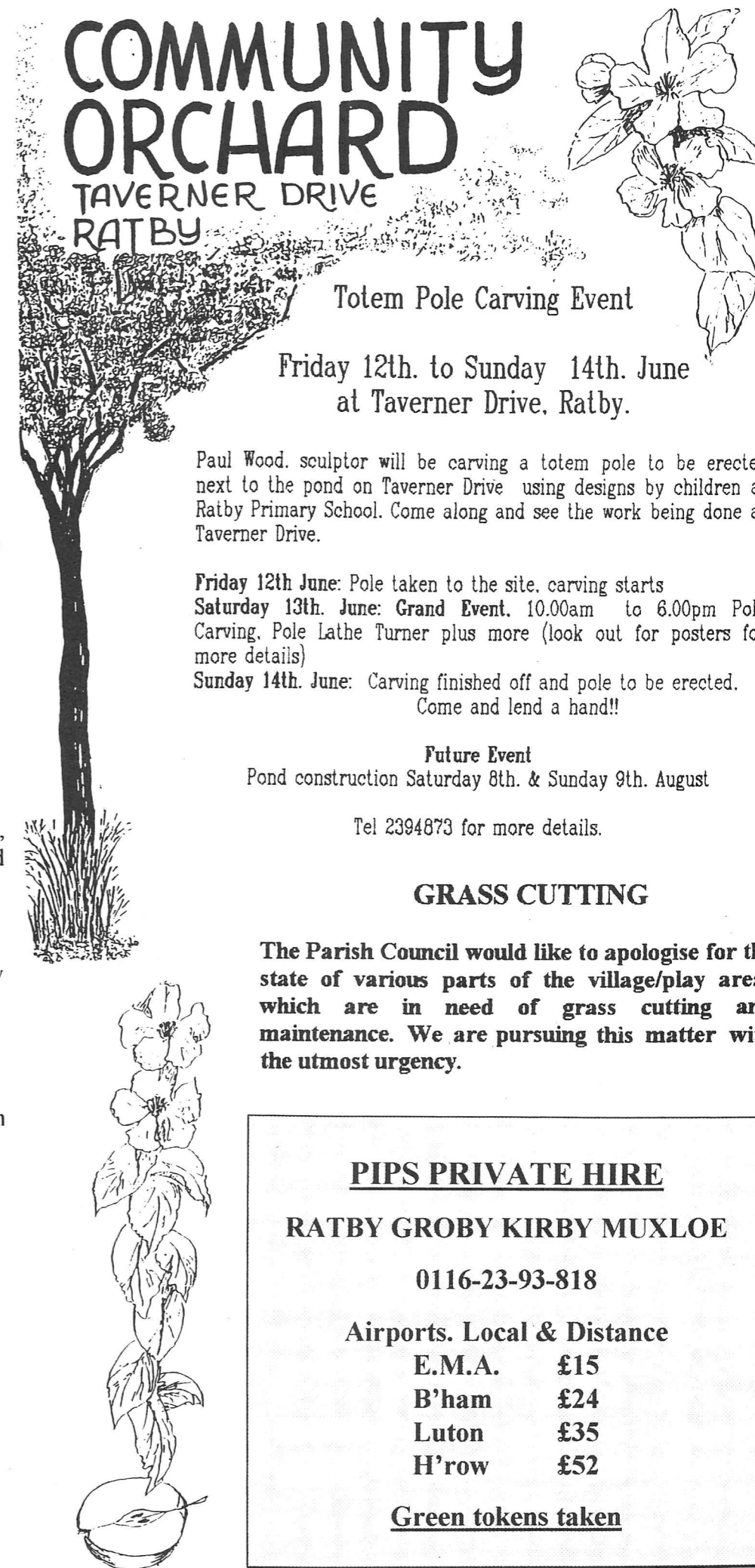
- Appliance Servicing and Installation
- Breakdown and Repair Services
- Plumbing and Heating Installation
- Kitchen & Bathroom Design and Installation
- Quality Guaranteed by Experienced Engineers

YOUR DOMESTIC GAS BOILER SERVICED

6 SAXONS RISE, RATBY, LEICS. LE6 0NF
Tel: 0116 2393662

£25 + VAT

CORGI
GAS IN SAFE HANDS



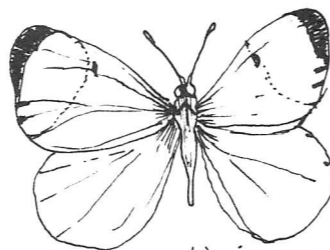
Letters to the Editor

Ashwell
East Street
Bovey Tracey
Devon.
11.5 98

Dear Editor,
I recently received my latest copy of Wot (always kindly sent onto me by Mrs Win Baillie), the front cover bearing a picture of a group of Ratby schoolchildren c. 1939. The teacher is not just a Miss Govett, it is the Miss Govett, for many years the most wonderful teacher at Ratby school, and inspiration to generations of young minds. I am still indebted to her (class of '54) for her spelling tests, her unique brand of arithmetic teaching and her gentle but firm guidance towards the fearsome "grown-up" world of Mr Ballard's class. Any photos of 1948-55?

Yours sincerely
Chris Garratt

Thank you for your response! Come on Ratby villagers, someone must have some photos and memories. What was this unique arithmetic? We know people love to see pictures like this, but often village folk have said they have not sent them in because they think no-one is interested, or we've seen them all before. It is just not true! Get those stories flooding in! Editor.



The orange tip is on the wing in May and June

Editor

43 Charnwood
Ratby
Leicester
3.5.98

Dear Wot Gang,
I write to say how much I enjoy the Wot, and read it from front to back and back again. But, and I don't like to criticise, why is it so late? As you can see by the date at the top of my letter it is May and my Wot arrived today. Two items in the Wot which I would have liked to go to have been and gone. So if you do include items, could they be in date, or what about a diary for the month and two months in advance. (e.g. Jan. Feb and March in Dec. issue) New events or updates added with each issue.

Yours sincerely,
Ms T Potterton.

Thank you for your letter, it is good to hear Wot is still appreciated after all these years. We are sorry that Wot is sometimes late. The last issue was particularly overdue, and sadly we had to omit details of Easter church services. We are dependant on volunteers, and holidays sometimes cause havoc.

We also rely on contributors to get copy to us, and don't always have time to chase them up. In the early days we tried to include a diary, but volunteers in Village groups are often also hard pressed and don't always have time to get information to us. We will try to do better! Editor.



A. H. COLEY

Plumbing & Heating Repairs,
New Installations, Bathrooms, Showers,

For a full range of services contact:

4, Saxons Rise
Ratby
Leicestershire LE6 0NF
Telephone: 0116-2394277

BIG BOBS BOUNCY CASTLES

LARGE OR SMALL

CHILDRENS PARTIES

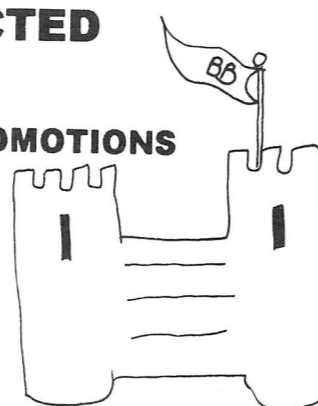
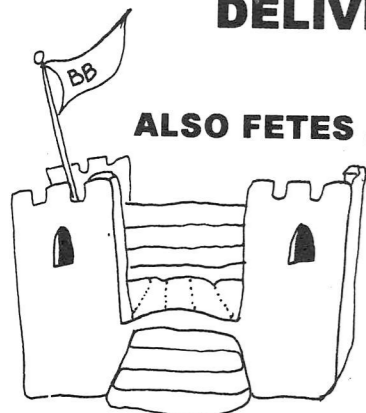
ENTERTAIN THE CHILDREN FOR HOURS WITH ONE OF OUR SMALL CASTLES

DELIVERED - ERECTED - COLLECTED

ALSO FETES, GALAS, SHOWS, EVENTS AND PROMOTIONS

FULLY INSURED

TEL 0116 2390427



C. GEARY & SONS
THE CHAMPION BAKERS



VISIT OUR OLDE WORLDE SHOP

WEDDING, CELEBRATION & NOVELTY CAKES OUR SPECIALITY

C GEARY & SONS STATION ROAD, RATBY LEICESTER 2386600

Crang's Bakeries

SEE and TRY our range of ;

66 Varieties of Bread

34 Varieties of Cobs, Rolls, etc.

200 Varieties of Cakes and Pastries

'RUSTIC' WHOLEMEAL ALLISON
HOVIS BEER BREAD & COBS BUN LOAVES
FANCY COBS REARBY HEALTH BREAD FUDGE MALT BREAD
SESAME COBS & BAPS
SPECKLE 'HIGH FIBRE' BREAD COTTAGE LOAVES
MALT CRUNCH BREAD COBS FARMHOUSE LOAVES
CHEESE & ONION BREAD WHITE & BROWN COBS and ROLLS & TWINNIES
FILLED COBS

Pabari's Ratby News.
5 Station Road, Ratby.
Tel. 0116-2393287

For the Largest Selection in Ratby of
Beers, Wines and Spirits.

A vast choice of Confectionery and Soft Drinks.

A Large variety of Greeting Cards, Wrapping Paper
and Stationery.



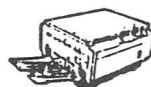
Newspapers & Magazines,
Delivered to your door daily.



We are the agents for
SKETCHLEY DRY CLEANING.

Video Rental & Photocopying also available.

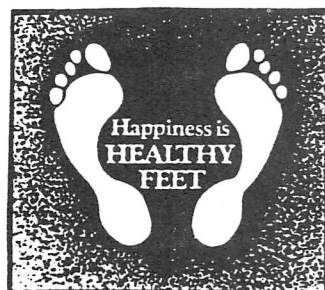
Opening Hours:
Mon - Fri 6.15 am to 1 pm & 2.30 pm to 10 pm.
Saturday 6.15 am to 10 pm.
Sunday 7.30 am to 2 pm & 7 pm to 9 pm.



COME IN AND SEE FOR YOURSELF

QUALIFIED VISITING CHIROPODIST

Peter S Comley MSSCh. MBChA



Markfield 01530 244887
24 Hour Ansaphone

Offers a Convenient & Professional Service
Registered Member of the
British Chiropody Association

JULIE'S
HAIRDRESSING

MAIN STREET, RATBY

**Traditional & Modern
Styling**

Telephone: 2392406

OAKLANDS SCHOOL OF RIDING

If you are thinking of taking up a new leisure activity or renewing a past interest, why not contact Julie Smith? Julie opened Oaklands Riding School on Groby Road, Ratby in January 1997, after many years experience working with other schools. Whilst working for a vet she had helped out at a riding school, before getting involved full time. She went on to gain qualifications and is now able to teach all aspects of riding and stable management. There are plans to offer riding holidays in the future.

Julie says that the accent is on friendliness at Oaklands, with cups of coffee after your lesson. She caters mainly for adults, with a choice of 12 horses. All the horses are regular eventers, and so have an independent character, no following nose to tail! They work only one or two hours a day. You can choose from a private lesson for one, lasting half an hour, ride with a partner, or take an hours lesson in a small group up to 5 in number.

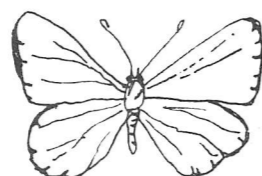
Why not make 1998 the year you take up a new challenge, and ride into the next century! Support this local enterprise, which, incidentally, is keeping part of Ratby green, and give Julie Smith a ring on 2387570 !

THIS ARTICLE IS SPONSORED BY



A. H. COLEY

Plumbing & Heating Repairs,
New Installations, Bathrooms, Showers,



The Common Blue
butterfly can be
seen from May
to September

RATBY POST OFFICE

Main Street Ratby

Newsagent Confectionary

Tobacco

PHOTOCOPY SERVICE GREETINGS CARDS

HALLMARK, RUSTCRAFT ETC.

SHOE REPAIR AGENTS

Open 7 Days

Tel. 2393001

DEADLINE FOR LETTERS ARTICLES
AND ADVERTS FOR THE

AUGUST EDITION
OF WOT!

IS THURSDAY 16th JULY 1998

EDITOR 2393367

ARTICLES 2394873

ADVERTS 2393279 or 2394873

LETTERS ETC. TO THE LIBRARY,
3 INGLE DRIVE or 10 GROBY ROAD.

The views expressed are the views of individual contributors and do not necessarily reflect the views of the publishers.

The inclusion of an advertiser in the magazine does not imply recommendation by "WOT" or its organisers

CASTLE OPTICIANS

Having to travel to Leicester
and park for just an
eye examination?
NOT ANY MORE!

Having to drag the children into
town after school?
NOT ANY MORE!

Budget to designer frames
to suit all price ranges

GENUINE VALUE FOR MONEY

PLEASE FEEL FREE TO BROWSE

MAIN STREET KIRBY MUXLOE
0116 2394288

KEN TOMKINS

General Builder
Alterations and Extensions
PROPERTY REPAIRS

93 Gynsill Lane, Anstey, Leicester
Telephone: 2871698

FRUITY FINGERS

Ingredients

- 7 oz (200gr) Butter
- 2 oz (50gr) Soft brown sugar
- 4 oz (100gr) Chopped dried apricots
- 2 oz (50gr) Chopped raisins
- 3 oz (75gr) Chopped glace cherries
- 3 tablespoon (45ml) Golden syrup
- 1 teaspoon ground ginger
- 8 Crushed weetabix

Method

1. Grease an 11" x 7" shallow tin
2. Melt sugar, syrup and butter in a saucepan
3. Stir in remaining ingredients and mix well
4. Spoon into a prepared tin and press to level
5. Bake in the centre of oven for 20-25 minutes at gas mark 4 or 180°C or 350°F till golden brown
6. Cut into fingers (about 18) while warm but allow to cool before removing from tin

Scrivener

ANNUAL FAMILY CAMP

AUGUST 8TH - 10TH

Contact Peter Fowler

2386165

ALPINE CLEANING SERVICES



OFFICES : CARPETS
THREE PIECE SUITES
VENETIAN BLINDS
BUILDERS CLEAN ETC

Geoff Wood

9 Ferndale Drive, Ratby, Leicester LE6 0LM
Tel: 0116 - 2388396 Mobile: 0860 267141