

40th
Edition

Wot! About Ratby

PUBLISHED BY RATBY SCOUT GROUP

June
1993

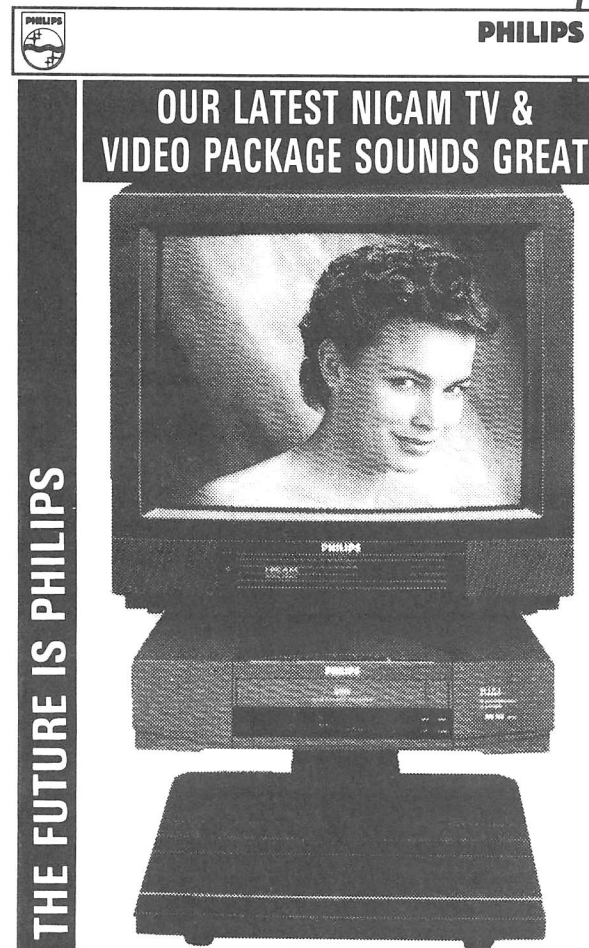


LOW COST RENTAL

- ✓ LOW MONTHLY PAYMENTS
- ✓ NO MORE REPAIR BILLS
- ✓ DELIVERED AND FITTED FREE
- ✓ CHANGE IT WHEN YOU WANT
- ✓ AFTER SALES SERVICE WITHIN 24 HRS

COME IN
AND SEE OUR
**low cost
RENTAL**

RANGE IN-STORE
PORTABLE COLOUR TV'S
FROM £6.99 PER MONTH
21" REMOTE CONTROL TV'S
FROM £9.99 PER MONTH
MULTIPROGRAMMABLE
VIDEOS PER MONTH
FROM £10.99



OUR LATEST NICAM TV &
VIDEO PACKAGE SOUNDS GREAT

Philips Nicam Digital Stereo-
CD quality sound from your
television through powerful
amplifiers. To match the
superb sound performance
is the brilliant picture clarity
that conventional sets find hard
to equal. Coupled with the
excellent Philips VR522
Nicam Video Recorder.

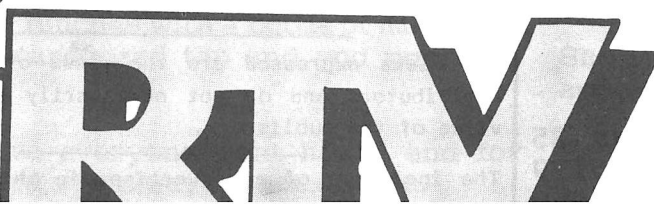
51CM REMOTE TV
& VIDEO PACKAGE
only £20.98 per month

51CM COL TV FASTEXT
TV/VIDEO PACKAGE
only £23.98 per month

59CM TEXT COL TV
& VIDEO
from £25.98 per month

WASHING MACHINE
RENTAL
from £14.99 per month

NICAM
51CM TELETEXT TV/VIDEO PACKAGE
TOTAL SEPARATE RENTAL PRICE £29.98
RTV RENTAL ONLY **£27.98** PER MONTH



**27 STATION ROAD,
RATBY.
TEL: LEICESTER
394544**

The Ratby Co-operative Junior Band

National Finals 1993

On Sunday April 4th 1993, the Ratby Co-operative Junior Band (plus a coach full of supporters) travelled to Manchester to represent the North Midlands in the National Youth Brass Band Championships of Great Britain at the Royal Northern College of Music.

They were awarded the North Midlands title after competing in a competition last November in Scunthorpe and thus qualifying for the National Finals yesterday.

There were 11 area finalists competing and the Ratby Co-operative Junior Band were awarded 3rd prize.

There were 29 members of the band all under the age of 19 performing at the contest and they were conducted by Mr Geoff Newman. The piece of music that they had to play was called "ASPIRATIONS" written by Derek Bourgeois and the adjudicators for the contest were Mr Geoffrey Brand and Mr Richard Evans.

It was an achievement for the Junior Band to have qualified for the National Finals and to be awarded 3rd prize was a fantastic result after all the hard work done by both the band and their conductor. Sunday 4th April 1993 will certainly be a date to remember by everyone connected with the Ratby Co-operative Band organisation and one of which we are all extremely proud.

PABARI'S RATBY NEWS

FOR THE LARGEST SELECTION OF:
BEERS, WINES, SPIRITS
AND SOFT DRINKS.

A VAST SELECTION OF CONFECTIONERY
NEWSPAPERS AND MAGAZINES
DELIVERED DAILY

ALL THE LATEST VIDEO TITLES NOW IN
PHOTOCOPYING - REDUCING + ENLARGING

COME IN AND SEE FOR YOURSELVES
OPEN TILL 10.00 pm MONDAY to SATURDAY
& TILL 2.00 pm SUNDAY
7.00 TILL 9.00 PM SUNDAY EVENING

HIS & HERS LADIES & GENTS HAIR DRESSING

OAPs welcome any day at
reduced rates

STYLING BLOW DRYING
COLOURING SETTING
TRIMMING PERMING

Tuesday to Saturday
Appointments not always
necessary

156 Station Road, Ratby
Tel 394429

SPRINGTIME IS THE SEASON FOR TARMAC COWBOYS

Lecestershire County Council are reminding the public that now is the season for Tarmac Cowboys and warn them to be on their guard against roaming contractors who offer to resurface their drives.

The 'Cowboys', who normally wear identity cards and appear to be genuine, call at people's homes around this time of year, and attempt to persuade them to agree to have their drive resurfaced - usually offering substantial guarantees. Often the work is carried out while the occupants are out and can't see what sort of job is being done. Only afterwards do unsuspecting customers realise that they have been conned when their newly laid drive begins to sink or crumble away.

THE SERVICE GARAGE

MAIN STREET, RATBY

M.O.T. TESTS

CARS (PETROL - DIESEL)
AND
MOTORCYCLES

Hours 8.30 - 5.00 Monday to Friday
Saturday by appointment only
SERVICE AND REPAIRS UNDERTAKEN
TELEPHONE 394966

RATBY REJECTS MAJOR DEVELOPMENT

Ratby Rejects Major Development

A questionnaire survey has shown overwhelming opposition to any major development in the village.

- 93% were opposed to the development proposal.
- 82% thought the disadvantages of it would outweigh any benefits offered.
- 91% would like to see no change or only a small amount of development in Ratby over the next 15 years.

On a more positive note, villagers were asked what they would support in the village. Traffic calming, more facilities for teenagers, a bowling green, tree planting and landscaping would all find support. Villagers were also asked their views on other planning issues. Most thought Green Wedges, The National Forest and Countryside Priority Area would benefit Ratby. Villagers were less enthusiastic about the Ivanhoe Line, although nobody thought it would harm Ratby. Surprisingly, over half those replying thought the Leicester Western Bypass would harm Ratby, (even though we have been told it would take traffic out of the village).

The main concerns of villagers were more development and roads, and this was reflected in their reasons for opposing major development. People were also concerned that more development would make the village too big, so it would lose its identity and become a suburb. More than half thought there had been too much development already.

The few who supported the major development proposal thought it would mean new roads to bypass the village, the removal of industry to more appropriate sites and a pedestrianised shopping square.

However, most of those replying wanted to retain the attractive countryside around Burroughs Road, even if it meant putting up with continued through traffic. About half thought that benefits like traffic calming could be achieved without paying the cost of more development.

The survey published in "Wot" two issues ago was designed to find out more about villagers' views on the major development proposed on land around Burroughs Road, and on other more general planning issues

in the area. Full results have been forwarded to both the Parish Council and District Council to assist in the production of the Hinckley and Bosworth Local Plan.

Although one was included in each issue of "Wot", only 55 were returned to the library. However, some valuable information was obtained from those returned.

Thanks to all who took the trouble to fill in the questionnaire and return it.

Andrew Simmonds



EDITORIAL NOTE ?



Andrew went to all that trouble and expense and only 55 could be bothered to respond. What does this tell us about people of the village?

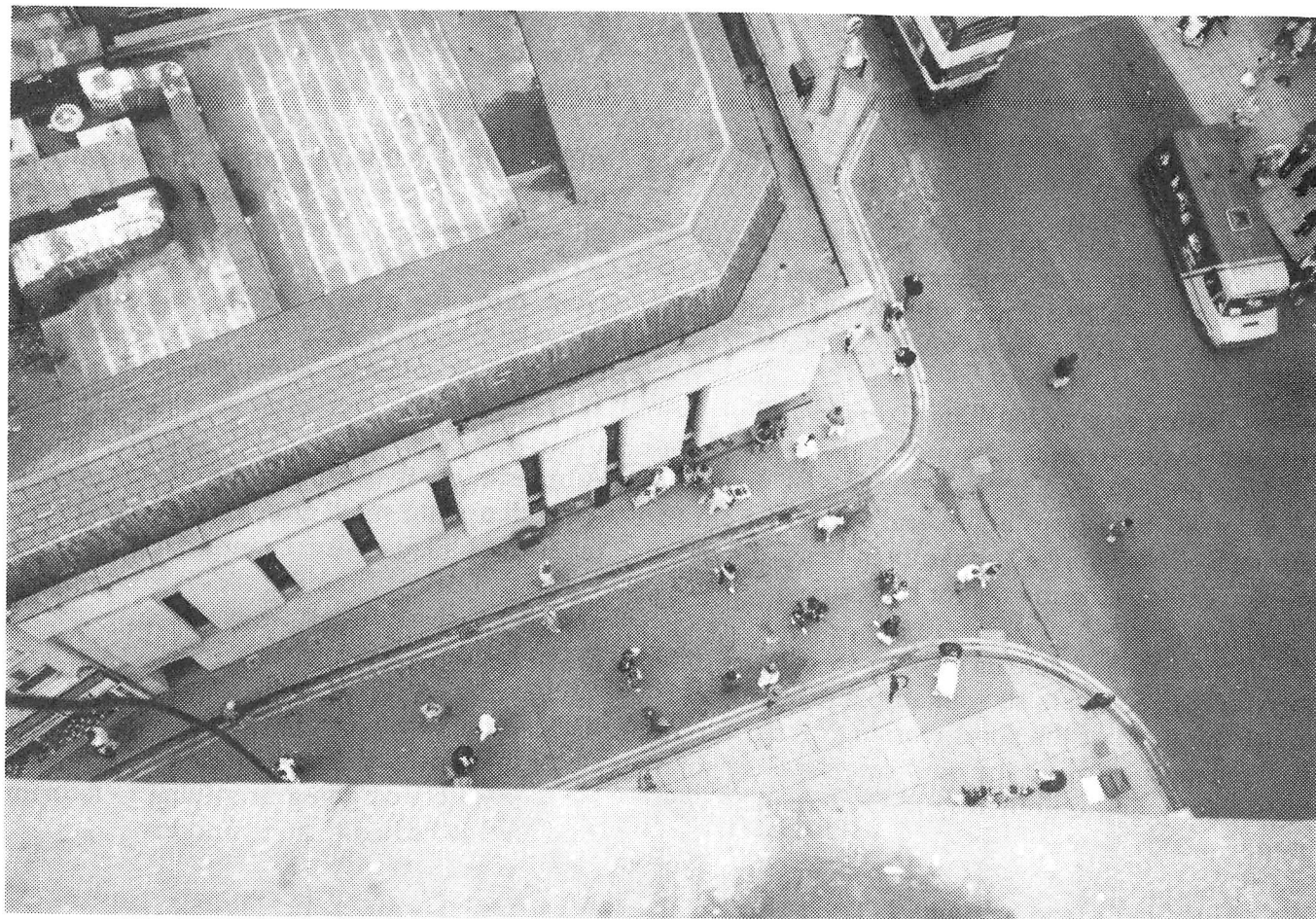
Perhaps no-one reads WOT.

M*G ECOBUILD

HOME IMPROVEMENTS

- * Quality designed patios and blockpaving
- * Feature fireplaces
- * Renovations and maintenance
- * Extensions and alterations

For friendly service
Free quotations and advice
Contact:
Matthew Grudgings,
6 Ash Close, Ratby,
Leicester LE6 0LY
Tel: (0533) 387018
NO JOB TOO SMALL



THE TRUTH ABOUT THE ABSEILING

You may have read this story in two other publications but neither had the story totally correct so we thought that we had better tell you the truth.

Certainly six Scouts abseiled down Lewis Tower for charity - Comic Relief. 10% of what they collected will go to the group there is no other charity involved. By sponsorship and donations, collected by two other Scouts on the day, they raised £400 for Comic Relief.

Two leaders also abseiled, Dennis and Ray; I wouldn't think Ray is 64 as reported!

Peter Maddocks, from Groby, was also in attendance. Peter is involved with Groby Scouts but has been Ratby's and the boys instructor over a number of years with their climbing and abseiling expeditions.

The photo shows the view from the top of the tower, so we can't get any names wrong!



COPPERS

CORNER



During March and April, the village has suffered a substantial increase in crime. As a result of this, the Chairman of Ratby Parish council has asked that I write an article, to once again point out basic crime prevention measures.

Auto crime

Avoid leaving property on view in an unattended vehicle. This is an open invitation for the opportunist criminal. If a vehicle is not in use, garage it. If you do not possess a garage ensure the car is locked and fitted with a security device or alarm.

Burglary

Most recent house burglaries have seen the burglar gain entry by using a screwdriver to force a small window. Ensure that good window locks are fitted.

If your property is unoccupied, try to make it look occupied and appear as normal as possible.

DO leave an internal light on in the premises during the hours of darkness. If possible, ask a neighbour to draw your curtains.

DO draw your curtains at night when going to bed or have your curtains drawn for you if you are away.

DO NOT leave curtains drawn during daylight.

RATBY RECTOR RETIRES

The Rev Peter Blackman who has been Rector of Ratby & Groby joint Parish is retiring at the end of July after 33 years here.

To mark the occasion a Farewell Party is to be held on Saturday 24th July at Brookvale High School at 6.30 p.m. The early start is to allow parents with children to come and leave early if they wish. A buffet supper will be served at about 7.30 -- each guest to bring a selection of food and drink -- followed by presentations to the Rector and Mrs. Jean Blackman. Entertainment will complete the evening.

Admission will be by ticket only, obtainable from Roy Derbyshire 16 Groby Road (tel 393746) or Alan Spencer (tel 394868) 45 Danehill Ratby. Tickets are free, but donations towards the presentation may also be handed to the above. Transport can be arranged for anyone without, provided it is requested when the ticket is obtained.

Thefts from Sheds and Garages

Up-and-over garage doors are very easy to break into. In addition to the standard locking handle, fit a padlock and sliding bolt to enhance the security of the garage. If you cannot garage your car, ensure that it is parked as close to the garage door as possible to prevent the garage doors being opened.

Ensure garden sheds are locked and fitted with padlocks if possible. During the night, the criminal will visit gardens to select the easier targets.

BE WARNED - LOOK AFTER POSSESSIONS OR LOSE THEM!

If you see or hear anything suspicious, please don't be afraid to telephone the police. We would far rather attend to find that all is in order, than visit the victim of crime the next day.

We are attending to expand neighbourhood watch in the village. If anyone is interested, please contact me, or alternatively Ann Day, telephone 395123 or Jill Grey, telephone 395208.

L

* FREE

1st IHR LESSON
OR
IHR MOTORWAY LESSON
(AFTER PASSING WITH MELSWAY DRIVING SCHOOL)

- REFRESHER LESSONS
- MOTORWAY

- BEGINNERS
- ADVANCED

ALL AGES WELCOME, AND NERVOUS PUPILS!!

*Don't Delay Start Today, Learn To Drive The Easy Way,
With MELSWAY.*

MELSWAY DRIVING SCHOOL
Mel Shipley, D.O.T., A.D.I. M.I.A.M.

**GAS
APPLIANCE
SERVICES**

- Appliance Servicing and Installation
- Breakdown and Repair Services
- Plumbing and Heating Installation
- Kitchen & Bathroom Design and Installation
- Quality Guaranteed by Experienced Engineers

YOUR DOMESTIC GAS
BOILER SERVICED

£16

✂

R. W. ANSTEE

Mechanical Engineering
& Welding

MOBILE AND WORKSHOP SERVICE

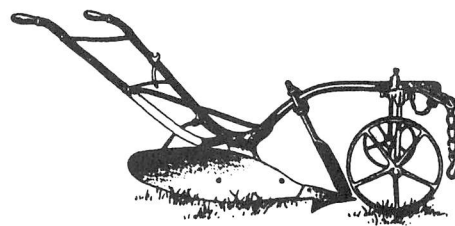
CARS AND LIGHT COMMERCIALS

COMPLETE MOT SERVICE INCLUDING WELDING
ALL MECHANICAL REPAIRS AND SERVICING

The Plough Inn

Burroughs Road, Ratby,
Leicester LE6 0XZ

☎ 0533 392103 ☎



QUIZ NIGHT

Every Monday, 8.30 p.m.
Teams Maximum 4
People
Up to £70 of Prizes
Available Every Week

GRILLS

Gammon, Sirloin, From
Rump, Fillet, 8oz-32oz
T-Bone, from £3.50 -
Mixed Grill £9.75

Food Available
12.00 noon-2.00 p.m.
6.00 p.m.-9.30 p.m.
(7.00 p.m. Sundays)

7 DAYS A WEEK

GIANT FRENCH



SANDWICHES
Hot & Cold

GRANDMA BATTLES TRADITIONAL YORKSHIRE PUDDING

Fillings from
£1.50 to £3.25
Beef, Lamb,
Pork, Sausage,
etc

FISH DISHES £3.25
Scampi-Cod to
Tuna - Shark - Plaice £3.75

**THE BEST FOOD
THE BEST BEER
THE BEST VALUE**

HOMEMADE DISHES

Lasagne, Chilli,
Curry, Steak
Pie, Vegetarian
Lasagne
from £3.50

MENU EXAMPLES

12oz Prime Rump Steak.....	£5.75
8oz Sirloin Steak.....	£4.75
12oz T-Bone Steak.....	£6.25
8oz Fillet Steak.....	£6.50
Plough Grill.....	£5.00
Steak, Gammon, Lamb & Pork Chop, Kidney & Sausage (min. 18oz meat)	
8oz Gammon & Fried Egg.....	£3.50
24oz Prime Rump Steak.....	£8.50
16oz Sirloin Steak.....	£7.50
24oz T-Bone Steak.....	£9.50
16oz Fillet Steak.....	£9.75

WINES

From £4.25 a Bottle
Choose from 30+
different, all under
£6.00 per bottle

THE BELGIUM TRIP!

On the 30th April, late, 25 people left the Bulls Head for a weekend in Ostend, on a coach "escorted/shepherded" by John Highliffe of Highliffe Travel - what was in store for us and John's coach?

The scene was soon set as we travelled down the motorway a group of revelers had a roast chicken salad picnic - washed down with Jack Daniels, "just enough to make you sleepy you understand."

After a short stop at Farthing Corner (in £:p?) we reached Dover with an hour to spare, stretching our legs and chatting in the loading area, we were soon joined by a bear, a lion and a group from St Trinians. They were all students in fancy dress, in custom cars raising money for charity.

On to the Ferry for Calais - only two coaches, one lorry and twelve cars so we had plenty of room to make the most of the short crossing. After a pint for breakfast, a trip to the duty free we were soon off the ferry and on our way to Ostend. The next stop.

We arrived in Ostend at about 9 O'clock, so we all had a brisk walk near the pier. Everybody admired the fish stalls set out so beautifully. They even had snails in a broth - I didn't see anybody try it though - I wonder why?

Off we went to Hotel Threvenet - a quiet small hotel, to be greeted by Fabian, who gave us the disturbing news that they only had 164 beers in stock - would we have time to try them all?

A quick charge up to the rooms for a wash and brush up and its time to start the sampling. The beers ranged from 6% to 12% in strength, there were lagers, beers, raspberry flavoured strawberry, cherry, apricot etc. Beer?

After a little thirst quencher and forty winks before tea and the night life. Another try of one of those fine beers and off to find something to eat. We were recommended the "Chicken Hut" down Long Street.

Sitting down at a little table, a waiter came to take our order of four chickens, within two minutes he is back with four chickens, a bowl of bread and four beers. The chicken was bootiful and hot, the bread just melted in your mouth. Delicious!

On then to Kozy Korner a small pub in Long Street owned by a couple from Rugby. The beer was good and all the music was from the sixties. There were a few puppets hanging up - which dropped

down on to you whilst drinking, this caused quite a few laughs when you saw the attacked peoples faces.

After "a few" drinks and much merriment, back to the hotel - guess what, we sampled a few more different beers, how many choices left?

Next morning after a good sleep, its breakfast. Some had English, some Continental and some just strong black coffee and I even saw one person look at breakfast, turn pale and walk out!

After a bit of sightseeing, off to Bruge. Once there we split up into small groups and went off to enjoy ourselves. This is a beautiful city well worth visiting. I saw it from the water, from a canal boat and from street level whilst visiting the shops, searching out chocolate.

Back on the coach, one of the organisers did a head count and realised that his wife wasn't on board! He took a vote on going or staying to look for her. And lost, so he had to go to find her.

After a search, she was found, so back to Ostend, another quick wash, out for dinner and back to Kozy Korner for a sing along.

Monday and its time to go home. A walk around the docks and shops, back to the hotel for one (or two) last tastings. Somebody even thought that we would have to come back as they still had 99 to taste.

Goodbye to Fabian and the hotel staff, on the coach, along the coast for home.

I'm sure a good time was had by all. Roll on next year.

If you are interested in a trip to Belgium next year, please have a chat with Rod Atkin, the school caretaker, or Mick Tipper, the

KEN TOMKINS

General Builder
Alterations and Extensions
PROPERTY REPAIRS

93 Gynsill Lane, Anstey, Leicester
Telephone: 871698

Can you afford to eat elsewhere??

**QUALITY
AT THE
RIGHT
PRICE!**

LAMBSKINS
BOWRON



TREDFAIRE

UNDERLAY
£2.25
sq. yd.

Duralay

**FREE
FITTING**

**Penthouse
Carpets Ltd.**

AXMINSTERS
TWISTPILE
SAXONY
SCULPTURED
FLOTEX

SCOTCHGARD
BERBERS
HUEGA TILES
CUSHIONFLOOR

GEORGIAN CARPETS

ANTRON®

STAINMASTER®
CARPET CERTIFIED BY DU PONT

Thousands of Patterns
to choose from

£3.99-£45.50 sq. yd.

SHOP AT HOME SERVICE

**PORTER'S DISCOUNT
CARPETS**

121/3 STATION ROAD
RATBY, LEICESTERSHIRE
Tel: 393238 / 395202

NEW!
Scotchgard
STAINRELEASE

Armstrong



ALLIANCE • LEICESTER

Sketchley
APPOINTED AGENT

Quality Drycleaning

midland fox

YES, IT SEEMS
RIDICULOUS BUT
IT'S TRUE!

ALL THESE SERVICES
ARE AVAILABLE
UNDER ONE ROOF



WE PRIDE
OURSELVES IN
OFFERING BEST
ADVICE AND
FRIENDLY SERVICE
SO POP IN
- WE'RE LOCAL

34 MAIN STREET, RATBY, LEICESTER
TEL: 0533 393574 FAX: 0533 392975

The Front Cover

We wanted something special for our 40th. edition and we hope that you will find more than one thing within the issue that, for you, falls into that category. For me the photographs on the front cover are certainly special. I hope you will all enjoy them as much as I have.

To the reader who kindly lent them, and for the future one or two more, thankyou very much indeed.

The top one is, of course, Station Road looking towards Kirby Muxloe. The picture was taken before July 1905 and if you try to stand in the same spot that the photographer did all those years ago, at a quiet time of the day, then it does not take too much imagination to transport yourself back in time to that period. I wonder who those people were?

Look at Stamford Street with the beautiful street lights which are so far apart, and those ornate iron railings. What a shame it is that so much of this type of wrought ironwork was lost in the war. There are quite a few people about. Does anyone know who they were? What about the man with the hand cart. Who was he and what was he doing? The period is probably a little later than that of the Station Road photograph. Can you help to pinpoint it?

Any information or comment would be welcome. Please don't assume that others will have already been in touch because that is the usual reason for us receiving no response at all.

If you can help with information about these photos or you can offer photos or stories that might be of interest, please phone Martin on 395179 or write to 35 Danehill.

RETHINK OF TALKING BOOKS

Many people will get concessions on borrowing talking books from the County's Libraries following a decision made by LCC Councillors.

The charge of 50p per single cassette and £1 for multiple cassettes had become necessary as one of a number of measures taken to keep spending within Government guidelines.

With effect from 1 May 1993, talking books borrowed from public libraries in Leicestershire will be free for all people with reading difficulties and people unable to hold and read conventional books. Half price loans will be available for children, full-time students, unemployed people and senior citizens.



DID YOU KNOW THE COTTAGE IN THE LAST ISSUE?

It is in Chapel Lane, but it looks a bit different now.

When the current owners bought it in 1950, the cottage had a tin-over-thatch roof.

The field to the left of the cottage, where the caravan is in the new picture was bought for 1/6d (7½p) per square yard from Mr Ratcliffe.

"Tippler" Moore - who used to keep the Post Office fell out of the back window. That's why he was called Tippler, not for the reason I first thought when told the story.



RATBY POST OFFICE

Main Street, Ratby

**Newsagent . Confectionery.
Tobacco.**

PHOTOCOPY SERVICE GREETINGS CARDS

Hallmark, Rustcraft etc

SHOE REPAIR AGENTS OPEN 7 DAYS

Tel. 393001.



C. GEARY & SONS

THE CHAMPION BAKERS



VISIT OUR OLDE WORLDE SHOP

WEDDING, CELEBRATION & NOVELTY CAKES OUR SPECIALITY

C GEARY & SONS STATION ROAD, RATBY LEICESTER 386800

Geary's Bakeries

SEE and TRY our range of ;

66 Varieties of Bread

34 Varieties of Cobs, Rolls, etc.

200 Varieties of Cakes and Pastries

RUSTIC WHOLEMEAL HILLINSON
HOVIS BEER BREAD & COBS BUN LOAVES
FANCY COBS REARBY HEALTH BREAD SESAME COBS & BAPS FUDGE MALT BREAD
SPECKLE HIGH FIBRE BREAD COTTAGE LOAVES
MALT CRUNCH BREAD COBS FARMHOUSE LOAVES WHITE & BROWN COBS and ROLLS & TWINNIES
CHEESE & ONION BREAD
FILLED COBS

Whiting Kirby & Co

17 STAMFORD STREET
GLENFIELD
LEICESTER
LE3 8DL

PAYING TOO MUCH FOR YOUR HOUSE INSURANCE ?????
COMPARE OUR PREMIUMS WITH YOUR EXISTING INSURER.

BULDINGS SUM INSURED	£40,000	PREMIUM	£64.00
" " "	£50,000	"	£80.00
" " "	£60,000	"	£96.00
CONTENTS SUM INSURED	£12,000	"	£48.00
" " "	£15,000	"	£60.00
" " "	£18,000	"	£72.00

WE ALSO OFFER VERY COMPETITIVE MOTOR INSURANCE PREMIUMS - WHY NOT TRY US FOR A QUOTE!

TELEPHONE (0533) 876569

Janet's Jottings

The 40th issue of Wot! How could my jottings reflect this? Could there be 40 different species of wild flowers blooming on just one day in May?

Here I am again on the Gower Peninsular enjoying yet another holiday. How better to spend the day - walking, looking, then listing.

I started the list whilst walking along a little sunken lane that eventually changes to a track, then through some woods and eventually I walked over sand dunes to the sea.

Here is the resulting list:

Chickweed	Pig Nut
Speedwell	Herb Robert
Strawberry	Queen Anne's Lace
Bitter cress	Daisy
Cowslip	Dandelion
White clover	Ribwort Plantain
Pink clover	Blue Bells
Stitchwort	Lady's Smock
Common Vetch	Jack-by-the-Hedge
Violet	Meadow Buttercup
Red Campion	Ragged Robin
Hawthorn	Fumitory
Gorse	Creeping Jenny
Yellow Archangel	Early Marsh
Wood Horsetail	Orchid
Spring Scurvy Grass	

31 species along the lane, beside the track and through the wood. On the dunes I found Rue Leaved Saxifrage, Common Whitlow grass, Lambs Lettuce, wild pansy, kidney vetch and Milk wort. Three more to find - sheeps sorrel, procumbent pearl wort and yellow rattle!! Yippee!! a Bouquet of 40 flowers all blooming on one day in May.

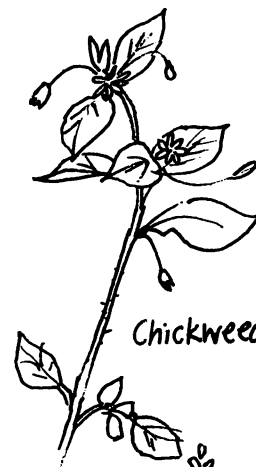
P.S. Written whilst on the Gower.

When I checked this list with my Leicestershire Records, I found only spring scurvy grass missing. Therefore I offer you pineapple Mayweed in its place.

A bouquet from Leicestershire to honour Ratby's 40th issue.



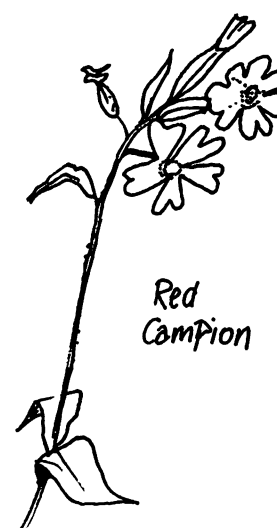
Lady's Smock



Chickweed



Speedwell



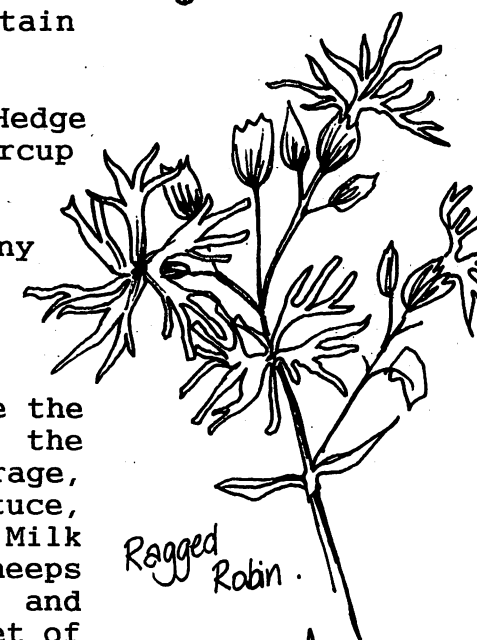
Red Campion



Yellow Archangel



White Clover



Ragged Robin



Jack by the hedge

Sponsored by

Gas Appliance
Services-Leicester

6 Saxons Rise, Ratby, Leicester LE6 0NF
Tel: Office: (0533) 393662

Ratby Parish Council

Environmental Issues

Hedgerow at Markfield Road, Whittington Rough Farm

The Parish Council was dismayed when approximately 100 m of hedgerow was grubbed out for no apparent reason. The Council wrote to the Leicestershire Hedgerow Project for their view.

The reply states:-

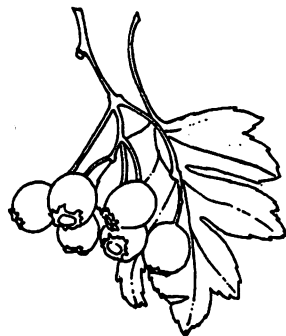
"The hedge in question is in an area which contains many species of rich and potentially ancient hedges.

Unfortunately the County Council has no provisions to deal with situations such as this at the present time, as removing hedges is not illegal and is not covered by planning regulations.

The Hedgerow project was set up by the County Council to help safeguard hedgerows as features of the countryside, by encouraging more sympathetic and effective management of them.

The Hedgerow Bill is currently going through Parliament. This proposes legislation which will require landowners to notify Local Authorities of their intent to remove any hedgerow, at which time the hedge can be protected on historic, landscape or wildlife grounds."

It is not too late to write to David Tredinnick, MP urging him to support this Bill!!



Hedgerows

Hedgerow at Cottager's Walk

This will be laid this Autumn to encourage stronger growth. Some standard trees will remain as features.

Ferndale Drive Recreation Area Environment Hedgerows

The Parish Council is starting a programme of hedgerow management.

This Autumn we are intending to lay the hedgerow behind the slide and mound. Remedial pruning will benefit the adjacent hedgerow which overhangs the ditch. Grants are being applied for.

In the next few years all hedgerows will be laid or coppiced to encourage vigorous growth.

Tree Planting

The Council has applied for 50 free native trees from the County Council, which will be planted at the field corners on Ferndale Drive. Species are to include Rowan, Birch, Alder, Crab Apple, Hazel and Willow.

Wildflower Meadow

Planning permission has been given to create a mound on Ferndale Drive play area. Work will begin this Summer on removing top soil from the site and transported to create a mound. The mound will be landscaped with shrubs, to help provide a windbreak, and there are plans in the future to incorporate play equipment into the mound.

Once the top 4" of the top soil have been removed the ground can be prepared for sowing in September and the all-weather footpath will be created.

A substantial grant will be available from the Urban Fringe Countryside Project for this work.

Would you be willing to help grow wild flowers for the meadow? Seeds will be provided. Contact the Clerk and let us know!!

Annual Parish Meeting

This meeting was held on Tuesday 27th April in the Welfare Hall. The Chairman outlined the year's events in his report.

He referred to the positive and negative events of the year, such as the informative meetings with villagers concerning Ratby's future and the local concerns with traffic and the destruction of the environment by the By-pass construction.

The Chairman also gave thanks to those who had contributed to village life throughout the year. Mr Owen Palmer had retired as maintenance man, and he was thanked for his excellent work and wished Good Luck for the future. He then added thanks to P.C. Moore

Ratby Parish Council

for his hard work in responding to the needs of the village. Special thanks were expressed for the Parish Clerk, Linda Laywood, for her competent and cheerful services to the Council.

The Balance Sheet for the year 1992/93 was presented to the meeting. A balance of £21,137.88 has been carried forward.

Councillor M Ball, clerk to the trust, presented the Sacheverell Trust Accounts for 1992.

The full report and accounts are available in Ratby Library.

Parish Council A.G.M.

The election of officers maintained the status quo. Councillor Jones joined the footpath team and was appointed Youth Liaison Officer. Councillor Iris Hannaford has taken on the role of newsletter writer for the coming year.

Traffic

Traffic Survey

The Parish Council's third traffic count was undertaken at Danehill and Station Road on Friday 2nd April. Thanks again to Mr Horace Gamble for taking part!

Proportion of vehicles by type travelling through Ratby:-

Vehicle	December	February	April
Cars	1039	802	1056
Vans	136	140	149
Buses	26	26	29
Lorries	16	14	12
Motorcycles	7	3	5
Pedal cycles	3	4	5
Others	0	2	3
Total	1227	991	1259

During the road works in February considerably less traffic travelled through the village - there were 237 less cars than in December.

The April figures show an increase in traffic overall.

Traffic using Danehill -

	Dec	Feb	April
Groby to Kirby	373	649	381
Kirby to Groby	98	342	77

Proportion of vehicles by road used

	Dec.	April
Danehill	38.4%	36.4%
Station Road	61.6%	63.6%

These figures would seem to indicate that there is overall a small increase in traffic travelling through the village.

In April it appears that 8 more vehicles travelled from Groby to Kirby along Danehill, and there were 21 less vehicles travelling in the opposite direction.

The survey would seem to indicate that the feared huge increase in traffic using Danehill after the road works has not happened.

Leicestershire Structure Plan

For your information:

The following comments about Ratby have been included in the Leicestershire County Council Summary:-

"Identify Ratby as a settlement within a transport choice corridor".

"A major road link to the A46 Leic. Western Bypass from Ratby should be provided for in Transport Policy 2 and 3 or additional Residential and Employment development to allow for developer funding".

"Identify Ratby as a principal Housing and Employment Development Area".

The above comments from Mr David M Haynes.

The following from Mr H Gamble for the Ratby Village Society

"The countryside around Ratby abounds in footpaths and bridleways which would be affected by recent development proposals. We feel that it is essential for existing public rights of way to be protected".

"Requests for measures to provide safe conditions for pedestrians in Ratby have not met with any success".

"The Rothley Brook will be affected, by the building of the Leic. Western Bypass. The brook is in need of 'listing' as an area of ecological importance".

"Ratby is under threat from proposed developments on sites of ancient woodland more protection is requested".

Ratby Parish Council

Spring Front Gardens Competition

Congratulations to everyone who made an effort! We look forward to more nominations for the next competition in the summer! Mr Eaton, the judge has commented on the number of beautiful gardens that were not nominated for the Spring Competition, but were potential prize-winners. So come on, enter your own or your neighbours for the summer competition!

The Spring winners were presented with their certificates at the May Parish Council Meeting.

Prize Winners

- 1st Prize Mr and Mrs March, 12 Ingle Drive
60½ points
2nd Prize Mr and Mrs Green, 76 Markfield Road
60 points
3rd Prize Mr and Mrs Stanley, 47 Park Road
50 points

Highly Commended

Mr Sharman, 49 Church Lane
Mrs Clarke, 8 Gillbank Drive



From left to right: Pete March, Robin March, Iris Hannaford, Muriel Stanley, Margaret Green and Lilian Clarke.

By-Pass Construction Traffic

Construction Traffic for the By-Pass should not be travelling through the village, but there are reports of such vehicles being seen. If you spot one, please take the number and report it, with time and date to the Council.

Widening of Station Road

There are mixed views on whether this has been a successful scheme. Most residents seem to feel that it has encouraged speeding.

Thankfully the long-standing 'hole in the pavement' has now disappeared following works this month.

Travellers

The Parish Council wrote to the County Council regarding the Travellers who were camped at the junction of Groby Road/Ratby Lane in February.

The reply states:-

"To effect the removal of itinerant travellers from grass verges/highways and other places, the County Council has to treat them as trespassers and use the civil law to evict them from its land".

The County Council has in force policies for dealing with such trespassers and these vary according to the location, number of complaints which the County Council receives, nuisance and annoyance to adjoining owners and members of the public".

On the 22nd February the Gypsy Liaison Officer visited the site to ascertain their intentions. On 23rd February the travellers were served with Notices informing them that they were trespassing. The travellers indicated that they would leave the site by Sunday February 28th.

Legal proceedings were drawn up in case the travellers did not leave as agreed.

Bad weather prevented their departure. Proceedings were issued on March 1st for a Court Hearing on March 4th. The Court Order proved unnecessary as the travellers moved on.

Hinckley and Bosworth Borough Council were responsible for the removal of the small amount of debris left. Appropriate action was promised to re-instate the grass verges.

B.T. KEYMER
18 Parklands Avenue, Groby.
Tel: Leicester 876926
WASHING MACHINE AND
CLEANER REPAIRS
MOST MAKES
PROMPT, PERSONAL SERVICE

14 **** 25 YEARS EXPERIENCE ! ****

PIP's
TAXI ♦ COURIER ♦ SERVICE
393-818
♦ RATBY ♦ LEICESTER ♦
AIRPORTS

TO:
GROBY £2.00
ANSTEY £3.00
KIRBY MUXLOE £2 TO £2.80
L.F.E. £2.80
LEICESTER £5.00
GREEN TOKENS TAKEN

ALPINE CLEANING SERVICES

For all your cleaning requirements

- * Windows
 - * 3 piece suites
 - * Carpets
 - * Car Seats
 - * General builders cleans
- Very competitive prices!**

GEOFF WOOD ☎ 0530 242878
(11 years cleaning experience)



Ratby Parish Council



BUSES ON DANEHILL



Buses on Danehill

Midland Fox have received letters both for and against the introduction of a bus route along Danehill. They have written to the Parish Council asking us to assess the situation.

If you want to have your views taken into account then it is essential that you write to the Parish Council or complete the following questionnaire. Petitions do not carry much weight - an individual response is needed. Please leave the questionnaire in the library, or return to the Councillors or Parish Clerk.

QUESTIONNAIRE

1. Which road do you live on?
.....
2. Would you like buses to run along Danehill? YES/NO
3. Please state reasons:-
4. If yes, what type of bus service would be acceptable (please tick)
Fox cub minibus
Double decker bus
Coach
5. How often do you travel by bus; (please tick)
1. Never
2. Occasionally
3. Once a week
4. More than once a week
5. Every day
6. Are you MALE/FEMALE ? (please delete)
7. Please tick age group:

Under 20 21 - 30 31 - 50 51 - 60 Over 60

Thank you.

V.E. DAY CHILDREN'S PARTY



This photo of 1945 VE Day Children's Party, Markfield Lane has kindly been loaned by Mrs Linda Preston of Ashby.

Standing L to R.

Phyl Ball, Mrs Tomlinson, Nelly Harris, Edith, Gert Lee holding Judith Boadman, Connee Jordan, Ivy Tipper, Phyl Devereux, Kath Brooks (holding Lindas son Martin Preston), Eva Towers, Mavis Loakes holding baby, Lottie Johnson, Mrs Aucott, Linda Preston (herself)

Laura Watson, Vera Cox, holding Yvonne Louie Barrat, Aggie Underwood, Joan Sutton.

Mrs Preston isn't very sure about the children, but the four little girls together are Johnsons (Lottie's) the little girl with the white ribbon is her daughter Hazel, next to her son Barry, on the front is Hedley Briggs and 2 Reynolds boys.

Any futher information would be gladly received.



Many young people have been unable to find a place in other local teams. They have got together with parents and some other local adults to form the 'Ratby Royals'. Secretary to the club, Mark Wellington, says "The Club's aim is to give everyone a chance. All players who turn up for training on a regular basis will be given a game".

The Club's first meeting was Friday October 23rd, when officers were elected, and decisions were made. Mr Andrew Jones is the team coach.

Ideas for various fund-raising efforts were suggested to enable the club to purchase a strip.

So watch out for the groups planned car washing venture and Sponsored walk. They deserve support for their efforts!

If you want to find out more about our football team, please telephone 386912 and ask for Mark or Andy.

Press Release

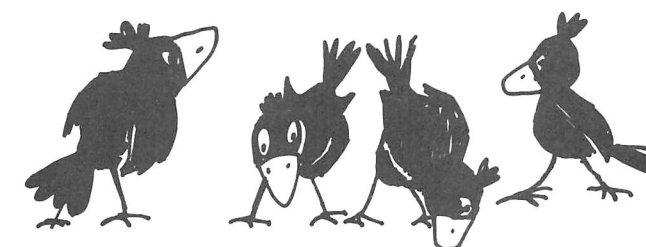
The Beaumont Police/Community Consultative Committee will be holding a Public Meeting at the Newfoundpool Neighbourhood Centre on Wednesday 9th June 1993 commencing at 7.30 p.m.

The object of the meeting is to provide an opportunity for people of the Sub-division to air their views over policing issues which concern their Community. It is hoped that members of the community will go along and take an active part in the meeting to make the event a success.

The Consultative Committee is chaired by Councillor Mrs C E Brock. Senior Police Officers from Beaumont Police Station will be present to answer questions and discuss matters raised.

It is not within the Committee's terms of reference to discuss individual cases. These should always be referred to the Sub-divisional Commander at Beaumont Police Station.

If you have any queries regarding this press release please contact Mr D J Ward, County Secretary's Department, County Hall, Glenfield, Leicester LE3 8RP. Telephone 656028.



FACTORY CARPET WAREHOUSE

25 NEVANTHON ROAD, LEICESTER

TEL: 544431

CUSHION FLOOR SALE

2-3 & 4 metre wide all at £2.99 per Sq Yd

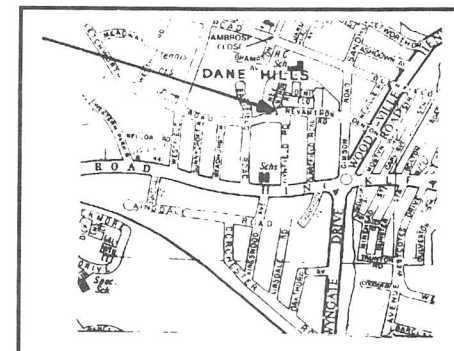
Free underlay on all Hessian-backed Carpets

CLEARING THIS MONTH

120 Rolls Factory 2nd's at

RIDICULOUS PRICES

Measuring and fitting Service



COUNTY TRAVEL

JET HOUSE * STATION ROAD * RATBY * LEICS
TEL.NO. 393118

OPEN UNTIL 10.PM

CIGARETTES

CONFECTIONERY

GROCERIES

FLOWERS

PETROL

WE SELL ALL YOUR BAR-B-Q REQUIREMENTS

AND THEY SELL KIDS FOOTBALLS



BAR-B-Q CHARCOAL



TO SEEK THE PAST

'The first requisite to happiness is that a man is born in a famous city' said Plutarch, the ancient Greek biographer. This was no doubt true in the first century AD. The Greek cities were the places where men of learning would gather, places where the records of their civilisation were kept. Today, most people would gladly give up the pace of city life to seek greater happiness in the countryside. However cities are here to stay and it is to the famous city of London that most family historians will have to resort during their efforts to discover the 'lives' of their ancestors.

In England or Wales, from 1837, if one of your ancestors was born, married or died in a famous city or, indeed, an unassuming, out of the way hamlet they ought to be recorded amongst the civil registration records which are held at:-

The Office of Population
Censuses and Surveys
St Catherine's House
10 Kingsway
LONDON WC2B 6JP

St Cath's, as most family historians call it, is the government repository of copies of birth, marriage and death certificates, and the indexes which allow researchers to locate a particular certificate which relates to an individual. Many family historians still refer to the office as the General Register Office of GRO, whilst the layman will tell you that certificates are kept at Somerset House. Well, the truth of the matter is that the registration records were once kept at the General Register Office that was indeed located at Somerset House. However, during 1970 the office was merged with the government Social Security Department to form the Office of Population Censuses and Surveys or OPCS. So much for the history of the office, what of the records held there.

Access to the actual certificates is not allowed, although copies of certificates can be acquired on payment of a fee. However, in order to determine the actual certificate which a researcher requires it is first necessary to consult either the indexes of births, marriages or deaths. Prior to 1984 each class of index is arranged in alphabetical order of surnames in the 4 quarters of each year - March, June, September and December. Each volume contains the events which were registered in the 3 months ending with the month shown. From 1984 they are arranged in alphabetical order for the full year.

The information gleaned by the researcher will consist of the year of the volume and the quarter which it represents; the surname and forename of the individual; and the district in which the event took place, together with a code which represents the area in which the registration district is to be found. Further, the index shows the reference number of the volume in which the actual certificate details are recorded followed by the actual page reference. An actual record would be recorded thus:-

BIRTH INDEX - December Quarter, 1837.

Surname	Forename	District	Code	Vol	Page
GAMBLE	John	Market Bosworth	XV	15	146

Prior to 1852 the area codes are given as Roman Numerals, in this case XV represents Leicestershire, Northants, Nottinghamshire and Rutland. From 1852 to 1946 areas are represented by arabic numbers and a code letter. 7a will be found to represent Leicestershire, Lincolnshire and Rutland.

Of course, a birth or death entry in the indexes deals with an event concerning a single person. Where a marriage is concerned the indexes will contain two entries, one under each of the surnames of the people who had contracted the marriage. The reference numbers relating to each party will be found to be the same.

As mention in the last edition of 'Wot' researchers can be saved the expense of a trip to the capital by consulting records which are held locally. The Leicester Stake of the Church of Jesus Christ of Latter-day Saints, commonly known as the Mormons, whose members have a religious interest in genealogy, have a library which contains micro filmed copies of St Catherine's House indexes. The Leicestershire and Rutland Family History Society also holds copies of births' indexes for the years 1837-1900, and are soon to have available marriage indexes for the same period. the society offers a search service of the indexes for those who are interested, enquiries about the service should be directed to:-

Mr Tom Shaw
34 Sussex Road
South Wigston
Leics. LE18 4WP

Each type of civil registration certificate reveals details about the individual to which it relates. A birth certificate records, in most cases, the name of the father of the child and the maiden name of its mother. This information in turn can be used to search marriage indexes for the details of the parents' union. A marriage certificate reveals the age of a person at marriage and also the name of that person's father. From this information an estimation of a person's date of birth can be made and the birth indexes consulted yet again for the registration.

After 1866 the indexes of deaths contain a very useful piece of detail, they show the reported age at death of the individual recorded. It therefore follows that if a researcher knows the date of death of a relative an estimate of the date of birth can be made, and, again, the indexes of births may be searched. Of course, civil registration records are never used in isolation. As for a family tree detective you will call upon many other sources which will help you seek the past. First among these sources is well, that's for next time! Mark

Mobile Beauty

All beauty treatments available on a home visiting service.
10% off any treatment with this advert
For any enquiries or to make an appointment, please call Tina on Leics. 387565 (24 hrs).

I.A., I.T.E.C. and C.I.D.E.S.C.O. qualified.
Member of "British Assoc. of Beauty Therapy and Cosmetology".

Query Desk

Question: My grandfather served in the army and was killed during the First World War, 1914-18. Where may I find some information about his death?

Answer: The OPCS holds indexed Army registers of war dead for the Boer War, 1899-1902, the Great War, 1914-1918; and the Second World War, 1939-1945. Certificates are obtainable and they show the following detail.

CERTIFIED COPY OF AN ENTRY OF DEATH		Application Number 1	
Registration of Births, Deaths and Marriages (Special Provisions) Act 1957			
Date of Death	Place of Death	Name of Deceased	Age
1918	ENGLAND	SPENCER, RICHARD	28
Cause of Death			
Died of wounds received in the service of the British Army during the First World War			
Service Number			
SAWI 004667			

However, during the Great War there were over 750,000 British casualties and it may be difficult to determine a relative's name from the indexes. If you know the whereabouts of your grandfather's medals, you will find that they are stamped with his details - service number, name, rank, regiment or unit. The rim or the back of the medal is the place to look (note: WW2 medals do not, generally, record such detail). If you have access to this information you may write to the:-

Commonwealth War Graves Commission
2 Marlow Road
Maidenhead
Berkshire SL6 7DX

The Commission's primary tasks are to tend the graves and maintain the memorials of the nation's war dead. However, the Commission holds registers of the war dead which contain personal details about each individual. When writing to OWGC it is advisable to send a small cheque to cover the cost of your enquiry, £4 perhaps. Also, remember to include with your enquiry the exact details which are recorded on your grandfather's medals.

books... books... books... books... books... books...

Stop Press

100 new books have arrived in Ratby Library!.



BABY NEEDS

Tel: 542494

For all your Baby and Nursery Accessories

Large selection of Moses Baskets,
Cot Quilts, Safety Gates, Buggies.
Twins, Tandems BRITAX - ALBION

23 Nevanthor Road, Leicester
(between Hinckley Road & Glenfield Road)

Congratulations

The Alliance and Leicester Building Society recently organised a national wine competition which was won locally, by 2 residents of Ratby, Mrs J Coulson and Mr and Mrs R J Smith.

A prize presentation was held at the Alliance and Leicester Agency in Ratby; in attendance was the proprietor, Mr Atul Jobanputra, the cashiers, Mrs Sandra Slater and Mrs Bernie Moore, and the prize winners were presented with bottles of wine and a book by the Branch Manager from Beaumont Leys, Mr Jeff Barnwell. Also in attendance was Mrs Sylvia Gant from the Bradgate Mail, and the photographs which were taken will be published at a later date.



The Railway Inn has won this year's "Bob Burn Cellar Competition". 144 Everards Pubs around the country entered this annual competition.

Judging is on the Quality of the Beer, the Handling of the Product, and the hygiene and safety of the cellar and equipment.

In 1991 and 1992 the "Railway Inn" was the runner up. Their success is well-deserved!

Congratulations to Mick and Jacqui and all the staff.

PLOUGH BONANZA with LEICESTER MAG

Sunday 27th June 10am start



A GREAT DAY OUT FOR THE FAMILY

For further details & to book stalls phone:-

The Plough 392103 or
Leicester Mag 873351



Letters



Dear Editor

I would have thought that all of the noise and problems that Danehill residents have had to endure recently, would have been enough for most villagers to leave well alone. Its still to busy and noisy. Try living on Danehill. If we could we would move, but after living her for 22 years its a bit difficult. Some people seem as if they have nothing better to do than aggravate an already serious problem. One day a child will be killed. When I moved here we were told no serious traffic will ever be allowed through Danehill. What a joke! Whats this problem with old people? Most have a car and drive through Danehill. Most people who offer this as an easy bus route don't even live on the estate.

I say try walking down Danehill you will see how noisy it is! Most old folk I know, don't want a bus to the front door.

For goodness sake knock it on the head W.O.T. and give us a break.

Name and address supplied.

Editorial Note: Wot does not intend to support this proposal, merely to bring it to your attention so that you have an opportunity of expressing your views whilst they are still able to have a bearing on its success or failure.

Dear Editor,

Regarding buses on Danehill. As residents we are appalled at the prospect. All Church Farm Estate residents purchased their properties knowing that there was not a bus service running through the estate. Some purchased partly because of this.

In 1978 residents took the law into their own hands to stop a planned bus service after a 'leak' about the bus company sending a bus through in order to establish it's right to use the route. This was achieved despite the intervention of the police.

Similar suggestions are being made again. Let us hope that neither this type of action or any other law breaking action happens on this occasion.

To this end please make sure that you register your objection in writing against not only the route passing along Danehill, but also against any suggestion of it using Ferndale and Nicholas Drive in order to service the newer parts of the estate. It is much better to write now than to feel compelled to use more extreme measures later because too few bothered to put pen to paper.

If you do nothing then perhaps you will volunteer to have buses stopping outside your windows at all hours, queues of people looking in, and an endless supply of cigarette ends, cigarette packets and sweet wrappers on your garden. They will be dropped there even if a bin is supplied. The rubbish that did get into the bin would however attract wasps and ants, at least until it was vandalised.

A letter in time is far less painful.

Name and address supplied.

JULIE'S HAIRDRESSING

MAIN STREET, RATBY

Traditional & Modern
Styling

Telephone: 392406

NEW COUNTY COUNCIL SERVICE SHOP OPENS IN LEICESTER

A new centre has been created by Leicestershire County Council to give out information and advice on all County Council services called the 'County Council Service Shop'.

The shop is situated in the heart of Leicester at 2-4 Market Place South. It is just one of a series of countrywide initiatives delivering the County Council's existing policies to provide easily accessible services, and information about them, to the people of Leicestershire. Its location makes it convenient for the thousands of people who come into the city centre to work, shop, sightsee and do business.

The shop is designed with people in mind. Facilities exist to cater for visitors who:

- have mobility problems
- have hearing and visual disabilities
- bring young children in push chairs
- speak one of the five main Asian languages

Specialist officers from the Training Standards Department and the Parent Officer from the Education Department are permanently based in the shop to give specific advice on these subjects.

Retiring

This Summer Ratby will lose two familiar figures.

Both Mr Peter Smith, head teacher of Ratby school and Rev. Peter Blackman are retiring after many years of work and involvement in village life.

CROWPIE



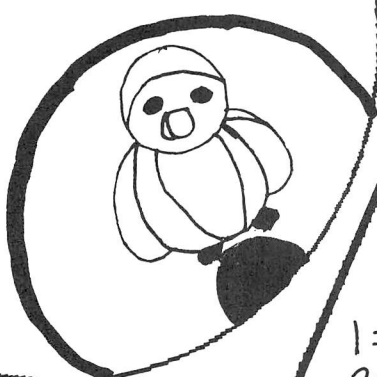
CHILDRENS PAGE

BY
HEATHER
FRETTER

Wot kind of
biscuit lives at the
South pole?

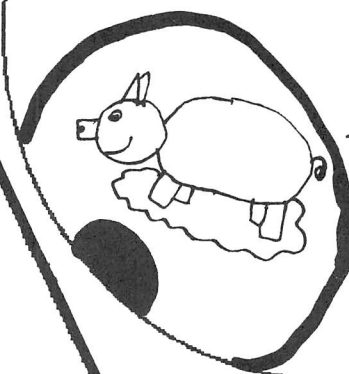
A penguin!!

Joke by
Christopher
Spencer
Aged 9



Wot do you
give a pig with a
Sore throat?

Oinkment!!



Joke by
Christopher
Spencer
Aged 9

Colour
me

- 1= Pink
- 2= Brown
- 3= Green
- 4= Peach

Anagram Answers

SMEN = 6
SWADS = 8
SWDS = 7
PICTURES = 6
JOKES = 5
JUNE = 4
LETTERS = 3
RATBY = 2
WOT = 1

Anagrams to do with "wot"

- 1. TWO =
- 2. ABTYR =
- 3. TETRELS =
- 4. UJEN =
- 5. OJKSE =
- 6. IPTCREUS =
- 7. MOEPS =
- 8. VRSDEAT =
- 9. WENS =



What a find!

This superb photo of the Railway Inn was spotted on some literature produced by Everards Brewery. Mick Thornton, the current landlord, says that this literature stated that the Railway Inn has been in the hands of Everards Brewery longer than any of the other public houses currently run by them.

There are numerous interesting features shown on the photo. The brickwork indicates that the current building was once two buildings, built at different times. There also appears to be cellars in each building which are not currently used. Cycling was obviously still a major form of transport.

Given that George Marvin was the landlord and that Batten & Son Corn Merchants were in both Ratby and Humberstone Gate, Leicester the photo would have been taken between 1905 and 1924. John William Palmer was landlord in 1904 and Charles Toon in 1925. George Marvin is listed as landlord in 1908, 1912 and 1922 in Trade Directories held in the County Records Office at Wigston.

If you can add to the information or date the photo more closely, please telephone Martin on Leicester 395179.

CUB COMMENDED BY AMBULANCE SERVICE

Simon Milbourne of the 1st Ratby Swifts was commended by Neil Mclelland of the Gorse Hill Ambulance Service for his prompt action and assistance at a recent accident in Martinshaw Woods.

One evening in May, a young cyclist riding a mountain bike in Martinshaw Woods hit a tree and in falling had a suspected fractured pelvis, Simon was commended for the assistance he gave.

In the dark he led the ambulance driver to the scene of the accident in the woods. He and his father assisted in getting the ambulance through padlocked gates and Simon carried vital equipment from the ambulance to the injured man. He also assembled quite complex stretcher apparatus.

It is nice to think it is just possible that being a Cub helped Simon in some way to have such a presence of mind and to be of valuable assistance on this occasion. He is definitely a boy that Ratby and the Swift Cub Pack and indeed his parents can be proud of.



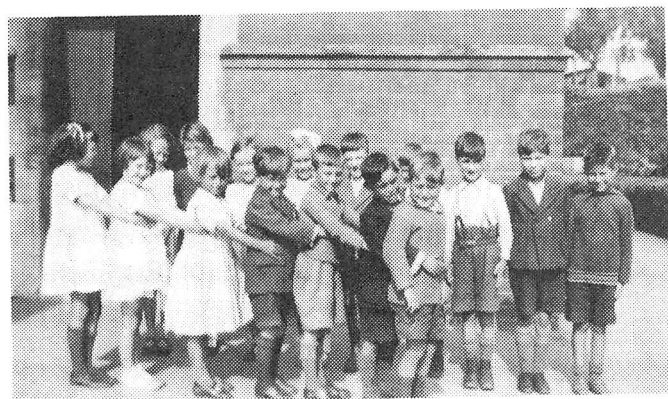
Remembering Ratby School

Mrs Margaret Green (nee Freeman) of Markfield Road has kindly lent us a collection of photographs. They were all taken by Miss Nellie Cufflin, who had been head mistress of the Infant school in Ratby for many years, until her retirement in 1955. Margaret says "she was a good teacher - she had her heart in it".

Miss Cufflin lived next door to the Freeman family, in the bungalow named 'Birchwood'. During her childhood Margaret remembers spending a lot of time next door - "We couldn't wait to get round there when we came home from school", she recalls. Miss Cufflin taught her to do French knitting, and there were always lots of children's books to read, and crayons and paper for drawing.

Margaret is a keen gardener, and her back garden is even more beautiful than the prize-winning front garden! She says that her love of gardening and flowers came from Miss Cufflin.

Margaret started school in 1931. Her mother took her to school on that first day, but never again.



This photograph was taken in 1933-34.

Back row: from left to right

1) Brenda Fitchett, 2) Eileen Coulton, 3) Margaret Geary, 4) Margaret Green (Freeman), 5) Raymond Stafford, 6) ? , 7) Den Green, 8) ? , 9) Melville Warden.

Front row; left to right

1) ? , 2) ? , 3) Delphine Brotherhood, 4) ? , 5) Francis Parker, 6) Derrick Barnes, 7) ? .

Every day the children took 'lunches', which they had to put on a big table. At about 10.30 they ate their lunches with a bottle of milk. The bottle had a cardboard top and you pushed a straw into it.

At dinner time everyone went home, and for Margaret there was always a hot dinner.

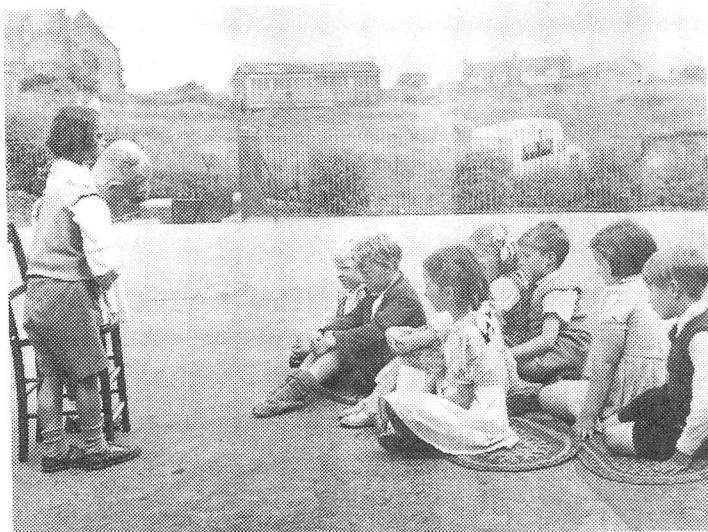
Mr Baker was the head master then, and every Friday he read a story to the top junior class - usually a classic such as 'Lorna Doone'. This

was followed by a 'question time', when children could ask any questions. At that time the teacher of the top class was Mr Sumpter.

Margaret says she never remembers being unhappy at school. She remembers that the children made a lot of equipment themselves. She learned to swim from Ratby School, at Vestry Street baths, Humberstone Gate. The teacher was Miss Houghnam.

She remembers that they used to have a man come once a year "I think they called them 'white ribbons', who talked about the evils of alcohol. She recalls the slogan "beer is best left alone". After his visit they all had to write an essay about what they had been told.

First year juniors was Miss Govert's class. The children had to learn psalms off by heart. Margaret says, "It didn't mean much to me at the time, the language was so different". But she can still remember many of them now.



Taken in 1951 -

"Watching and Listening to a 'cinema' made by children".

In the background you can see the chicken huts where geese were kept.

Notice the laurel bushes behind the railings

Margaret remembers the three infant classes: the teachers were Miss Walters (who became Mrs Bradley-Moore,) Miss Byatt and Miss Cufflin herself, who took the top class.

She can't recall anyone not being able to read, and everyone had to learn their tables.

On oak apple day girls had an oak leaf pinned to their clothes. If they didn't wear one the boys were allowed to "run them with a stinging nettle".

Miss Cufflin's class always had jars with beans



growing in them on the windowsill, or frog spawn from one of the many ponds around the village. Nature study was an important lesson, and the children went on Nature walks, learning the names of wild flowers.

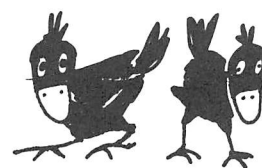
Miss Cufflin died a couple of years ago. We hope that she would have been pleased to see so many people enjoy her photographs printed in 'Wot'.

She was apparently a keen photographer, who won prizes in competitions. Perhaps you will recognise some of the children and let us know!

We hope to publish more pictures in the next issue!.



Planting the cherry trees for the Coronation in 1952. Previously there were laurel bushes on top of the wall.



Please write to 3 Ingle Drive or 35 Danehill or telephone 394873 or 395179 and let us know if you recognise any of the children in the photographs. Tell us your memories of Ratby School Days!

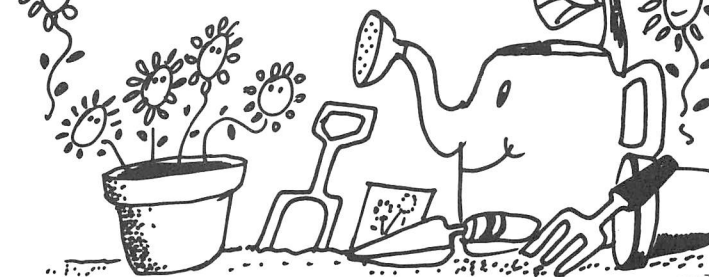
Ratby Parish Council

Summer

FRONT GARDEN COMPETITION

Judging will begin in the week beginning 26th July

Nominations to the Clerk please by 23rd July



DEADLINE FOR LETTERS
ARTICLES AND ADVERTS FOR

AUGUST EDITION OF WOT!
IS THURSDAY 8TH JULY

ADVERTS 395179
ARTICLES 393279
EDITOR 393367

HOTLINE!! PHONE US ON 394873 OR
395179 WITH ANY NEWS ITEMS.

The views expressed are the views of individual contributors and do not necessarily reflect the views of the publishers.

The inclusion of an advertiser in this newspaper does not imply a recommendation by Wot! or its organisers.

Lynda

A Ratby Celebrity

..... Her first story was written on her knee in the front room of a small terraced house in Station Road, whilst daughters Laura and Lyndsey watched T.V.

"It just sort of happened", says Lynda Page. "I'd never written before, I don't know what possessed me".

She and her friend from school days, Jenny, had gone back to college to do English 'O' level. In her lunch time Lynda caught up with her homework on the office PC. One day she re-discovered four paragraphs of a story she had written. It was about a boy called Henry Higgins She pictured his Mother, her name was Annie, and knew exactly what she was like. The story grew.

Lynda sent the story to an agent eventually. Her hard work was rewarded He said it was a great story but still only half a book. But he told her that she had got a talent for writing.

Lynda had already started a second book centred on the Leicester Hosiery Factories and set in the 1950's. It was an era that was in vogue at the time. So "Evie" was accepted by the publisher, Headline. It is available in Ratby Library, but you'll never find it on the shelf, you'll have to put your name on the waiting list!

You could go out and buy your own copy. The paperback version is out on June 3rd. The hardback version of that original story, "Annie" is to be launched on the same day.

Lynda will be signing copies of her books in the Leicester Branch of W.H. Smith between 12.30 and 1.30 on Saturday June 5th.

"Annie" will always be Lynda's favourite book. Set at the turn of the century, it was named Annie. It was inspired by her grandmother, also named Annie. After a traumatic experience Annie, the heroine leaves her home in Leicester with her 5 year old son. It is the middle of the night. She sets off walking to find her long-lost relatives in Ratby all her possessions loaded onto a small cart shelf!

You'll have to read the book to find out whether Annie finds them!

Lynda says she wanted to write about Ratby, "to put it on the map and show my feelings for

the village".

"I feel so at home here", she says, "people are so welcoming".

She loves writing, sometimes working continuously for 3 or 4 weeks. Sometimes even jumping out of bed to get ideas down before she forgets them. She is always thinking ahead to the next story the opening chapter of her next book is already in her head.

Her sagas have so far been given women's names for their titles. 'Evie' and 'Annie' will be followed by 'Josie', to be launched next June. 'Josie' begins in the 1960's and is set in the Newfoundpool area of Leicester.

Lynda thinks she may try something new for her next book and feels she has a suspense thriller waiting to be written after that

Her ambition is to be a better writer, to go on improving, but, she adds, she writes to give people enjoyment, "at the end of the day it's the thrill when someone puts the book down and says they enjoyed it."

Lynda has suggested a competition to raise funds for Ratby Scout Group. She will present signed copies of her copies 'Annie' and 'Evie' to the winner:

So watch out for details. You could be the lucky person to proudly display these books on your shelf!

BEAT THE BULGE IN '93 WITH BODYWISE **S T E P** AEROBICS

at the CHURCH ROOMS, RATBY
SATURDAYS 10.30 - 11.30 a.m.
ONLY £2.50

BOOK NOW TO AVOID DISAPPOINTMENT

ALSO BODYWISE AEROBICS BODY
CONDITIONING MONDAYS 7.30 - 8.30 p.m.

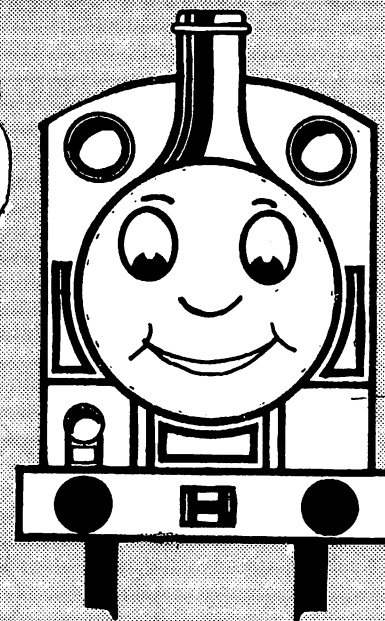
Tel: Sandra (YMCA/RSA) 376458
Erica (YMCA/RSA) 711868
ALL LEVELS OF FITNESS WELCOME
Please bring a towel

ENGLISH ROAST
SPECIAL SERVED
EVERY THURSDAY
WITH A SELECTION
OF FRESH
VEGETABLES

NOW
AVAILABLE
EVERARDS
NEW CASK
CONDITIONED
MILD
ABV 3.3

A Warm Welcome Awaits You at
THE RAILWAY INN

from Jacqui, Mick
and all the Staff..



1993 EVERARDS
CELLAR
COMPETITION
RESULT :-
1ST. RAILWAY INN
RATBY
Simply The Best

TELEPHONE
392493

TRADITIONAL
PUB
GAMES

NO
JUKE BOX

1ST RATBY SWIFTS ANNUAL REPORT

This last year has been the best ever for the Swifts in terms of numbers. At a peak we had 25 boys and now have 23, 2 of whom are due to leave cubs shortly. Owing to this increase in numbers this year, it has been decided to hold separate cub camps as up to 45 boys are difficult to cater for together.

Activity wise, the last 12 months saw the Swifts excel at sports day with many certificates received. Whilst the swimming gala was overall less successful, Ben Cryar proved to be a hopeful for better days to come. Many thanks to all the boys who took part. We entered the county cross country and the boys enjoyed the challenge.

Last year's rounders challenge with the Brownies was disputed and was considered a draw. This year the cubs will win. I hope to make this an annual event.

The greatest achievement in the year for the boys has been the gang show and I will always be amazed at the effort cubs will put into activities of this nature. Well done!

Owing to the shortage of uniformed leaders, the Swifts have not achieved as well as one would like in terms of their badge work. However, attendance is good. The boys enjoy pack nights and that is my prime concern. I am, as always, looking for adults who would be prepared to commit themselves every week as a uniformed leader. Having said that, my 3 helpers, Dave, Paul and Justine are magnificent and we could not survive without them.

Extra mural activities so to speak included night walks through Bradgate Park, Beacon Hill and Martinshaw Woods, plus an incredible wet day camp at John's Lee Wood that was very successful and will be repeated.

Future planned events for 1993/94 will include a return visit to the Fire Station and Police Station plus another trip to Dovedale and a first off visit to Snibson Discovery Park.

Yours in Scouting

Trevor Sleath CSL