

WOT!

About Ratby

PUBLISHED BY RATBY SCOUT GROUP

THE RETURN OF THE HORSE!

Ratby Allotment Association is creating a new allotment site in Ratby with the help of horse and plough. The field, on the north side of Desford Lane is former ridge and furrow land, and ploughing in this traditional way will help to maintain this historic landscape. The actual ridges will form the allotment plots, just as ridges demarcated the strips of land allocated to villagers hundreds of years ago.

Villagers turned out to watch the horses and plough in action on Saturday January 22nd

Andrew Simmonds, the Chairman of Ratby Allotment Association said, 'I am delighted that we have been able to provide more allotments for residents. This will give people opportunities to grow wholesome food and reduce food miles.'

Funding for the site's development has come from a County Council Community Forum Grant, and Voluntary Action Leicestershire.



More pictures on page 2



Last Few Plots at

FIELDING LANE

OFF FERNDAL DRIVE, RATBY, LE6 0AS

3 & 4 Bedroomed Detached and Showhome

Showhome open Friday, Saturday & Sunday 12-4pm

Coming Soon

New Homes built to Level 4 of the Code for Sustainable Homes

Featuring

Under floor heating to Ground Floors
Increased insulation standards to Walls, Floors & Roofs
Green Roofs
Air Source Heat Pumps for Heating & Hot Water
Solar Panels

For further details please contact
Cawrey Limited
Kirby Grange Farm, Taverner Drive, Ratby Leicester LE6 0HQ

Tel: 0116 239 0600

www.cawrey.co.uk
email: enquiry@cawrey.co.uk

A HUNDRED YEARS!

Ratby Methodist Church will be a hundred years old at the end of this coming October. We are celebrating our centenary from this March until October. Starting with 'An Evening in the Parlour'. Parlour games, various 'turns', sing-songs, refreshments, and quizzes.

We are going to have various ministers who have had association with the church over the past years and associates preaching throughout the year,

Starting with the morning service on Sunday 13th March, the Rev John Bower, who was our minister when the church was renovated will be joining us.

On April 15th through to 17th we are holding an exhibition of 'photos, newspaper cutting's, etc. More about that in the next Wot.

If you have anything that you think may be of interest, please get in touch with one of our members or bring it along to one of our coffee mornings. We would love to see them.

RATBY CO-OPERATIVE BAND

RATBY CHURCH CONCERT

February 12th at 7.30.

The Senior Band will be performing at this ever popular event.

For tickets phone Malcolm Pounder on 238 6749

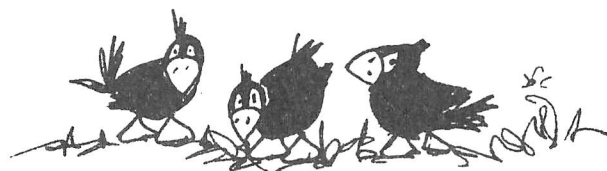
Or visit malcolmpounder@hotmail.com

CONTESTS

The Senior Band will be competing in the Midland Area Contest in Bedworth on March 12th.

The following day it's the Mid Band's turn to take part in the MBBA contest in Bedworth.

Good Luck to both Bands.



ANNUAL SHOW

Ratby Village Society is looking ahead to Saturday August 13th 2011. This is the date set for The Annual Show to be held in the Church Rooms, on Church Lane, Ratby.

Together with Ratby's Allotment Group we are looking forward to holding a really great annual show. And we would like all amateur gardeners, fruit and vegetable growers, flower growers and arrangers, cake bakers, preserve makers, wine makers, handicraft enthusiasts, poetry writers, as well as exhibitors under 16 years of age to have a go and enter the various classes, and enjoy the day with us.

We are most grateful to the highly supportive local business people and private individuals who have generously and enthusiastically pledged trophies for the various classes in the show.

Please look out for further details, including the schedule of classes to be published soon. There is no charge for entering exhibits.

RATBY OLD BOYS

We don't know when this photograph was taken, and would welcome information from villagers. Do you recognise anyone? Please contact us if you have anything to tell us!



RATBY LIBRARY For Children and Parents

Wriggly Readers

This is a free session for babies and toddlers with their parents and carers. Come and join in the informal story and song time on the 4th Thursday of every month, from 2 o'clock.

The next sessions will be held on;

- February 24th
- March 24th

Bookcrawl

This is an adventure that your child can take part in just by visiting the library. All you have to do to take part is join your baby to the library. You will get a collectors card and collect a sticker every time you visit the library. When you have 4 stickers, you will receive a beautiful Bookstart certificate. There are 12 certificates to collect. This is a lovely way to get to know the library and to explore and share books together. Why not begin the Book Crawl adventure with your child today! To find out more, contact your local library and don't forget you can also pick up your Free Bookstart Packs.



DID YOU KNOW?

There has been a Band in Ratby for over a hundred years?

HIS and HERS

LADIES AND GENTS HAIR DRESSING

Re-opened under New Management
OAPs REDUCED RATES
Appointments not always necessary.

156 STATION ROAD, RATBY
239 4429

Porter's Discount Carpets

121/3 STATION ROAD, RATBY

TELEPHONE: 239 3238 OR 239 5202. MOBILE: 07860 551142

SHOP AT HOME SERVICE



NOW INCLUDING L.B.P. Tiling SPECIALISTS IN CERAMIC AND PORCELAIN TILING

HAVE YOUR SAY ABOUT LOCAL GREEN SPACE

Leicestershire has some fantastic green spaces. If you feel strongly about green space in your local area, we want to hear from you!

The Coalition Government is thinking about creating a new designation to protect green areas of particular importance to local communities. We want to start now, by finding out your views about the green spaces that are important to you.

Which areas are particularly important to you and why? Which areas need protection?

You can take part by attending your local Community Forum. Your views will be critical in developing future policies and proposals.

Please note the next Markfield, Ratby, Groby, Stanton under Bardon, Bagworth and Thornton Community Forum (MRG) will be on Thursday, 10th February 2011 at 18:30 at Groby Community College, Ratby Road, Groby, Leicestershire, LE6 0GE.

For details of Community Forums in your area, please visit www.leicestershireforums.org or contact Sabrina Malik on 0116 305 5951 or by e-mail on sabrina.malik@leics.gov.uk

Ratby Post Office & Newsagents

PHOTOBOOTH INSTORE

Only £8



Passport Check & Send

- ✓ Make sure your form's correct
- ✓ Applications despatched by Special Delivery
- ✓ Priority treatment provided
- ✓ Track your application online

30 Main Street - Tel: 2393001

Shop Hours:
Mon to Sat
6:00am - 5:30pm
(7:30pm Wed & Sat)

Post Office Hours:
Mon to Fri
9:00am to 5:30pm
Sat 9:00am to 12:30pm

A RADICAL REFORM of UK SCHOOLS? Just another Coalition promise?

In 2009 it was revealed that despite a high level of per-pupil spending, the UK has fallen drastically in terms of education. In 2000 the UK was placed at 7th, 8th and 4th in the world for reading, maths and science respectively. The 2009 rankings stood at 25th, 27th and 16th, a colossal drop.

How can standards in education have plummeted so rapidly? I strongly believe that neither the teachers nor the funding are to blame. The main problem is the behaviour and attitude of pupils.

According to the Schools White Paper 2010, 'the greatest concern voiced by new teachers, and a very common reason experienced teachers cite for leaving the profession is poor pupil behaviour.'

This doesn't come as a surprise. Walking through corridors at colleges and secondary schools reveals the ineffectiveness of disciplinary techniques and lack of respect for teachers as you are exposed to language and behaviour similar to that of a football crowd.

'The reason the discipline system is going downhill is because the punishments just aren't effective,' says one college student. 'Badly behaved students don't care. Some even see it as a competition-trying to be the first to get out of the classroom.'

YOUR LOCAL CAB COMPANY NOW AVAILABLE GROBY CABS

LOCAL & LONG DISTANCE
ANYTIME ANYWHERE

AIRPORT TRANSFERS
E.MIDS = £20.00

PHONE:
0116
2 31 22 14

PJ Designs Limited & Paul Woods Conservatories

- **Fitted Kitchens**
- **Fitted Bedrooms**
- **Home office furniture**
- **Double glazed windows**
- **Conservatories**

- **Guaranteed**
Highly skilled workmanship
Excellent quality products.
- **All locally manufactured to**
a very high specification by
people you can trust.

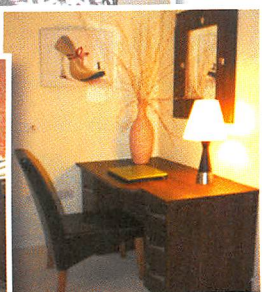
Why Pay More?

Five products under one company!
Request a no obligation quotation today!

Serving the local community
Ratby . Groby . Kirby Muxloe
Glenfield . Desford
and all the surrounding villages.



Ratby



Ratby Church Rooms - Fitted storage cupboards for Pre-school, Scouts and brownies



Conservatories and double glazed windows



All constructed by local time served craftsmen.

Now is the time to join our many satisfied customers to get that extra space in today's "Lets improve not move" trend. We Guarantee total satisfaction through good local service. Our future business is totally dependent on customer satisfaction.

PJ Designs Limited & Paul Woods Conservatories
Telephone: 07860 178 232 or 0116 2386 645

So what do the government propose to do about these problems? The recurring theme in their report is to 'increase the authority of teachers' so that they can discipline, discipline and discipline some more. The coalition also wants to make it faster and easier to exclude students permanently, and use the same approach towards detentions.

Overall, teachers at Groby Community College do not seem to think this is the answer.

'They're just repeating what the last government said,' says one teacher. 'A harsh approach obviously isn't working. It's the attitudes of the students that we need to change.'

Another teacher agrees, 'You need some structure, some concept of consequence, but I don't think punishments work. I try to find other ways to deal with discipline problems. There's always a reason behind the way pupils behave. If I have to give a detention I talk to the student and see if I can find out what the problem is. Most of the time they continue to behave exactly the same, but then the next day you try again. Even if you change just one student's attitude then it would have been worth it.'

Maybe this is too idealistic, but many teachers use detentions too quickly and readily, and this has led to them becoming ineffective. In addition, the Coalition's response to bad behaviour in schools does sound remarkably similar to the system currently in place. It seems only time will tell how effective the 'reform of education' will be.

However, if it is unsuccessful we can only expect further drops in standards of education, and following this, society.

Rebecca Harrison

An interesting debate. We would like readers out there to contribute their views on this issue. Do you football fans have a comment to make? Are attitudes to education in this country a direct result of the cult of celebrity? In the developing world students will often walk miles to a school with very few resources because they value the opportunity for education as a means of making progress in their lives, and of gaining employment. Have we lost our way here? **Editor**



RATBY METHODIST CHURCH

Friday 25th March
Supper Serenades at 7.30 pm
Buffet Supper & 'Songs from the Shows'
with 'Trinity'



(Kate Watkiss & Friends)

Admission £7 by ticket only

Tickets are now available from

Jean Vann tel: 0116 2386321 or

Joy Parker tel: 0116 2874042



The proceeds will be shared between
ABF The Soldiers' Charity & Soar Valley Music Centre
(a local charity supporting 'Music for Everyone', particularly children with learning difficulties.)

PAUL ASHER Family Funeral Directors

Independent Funeral Directors

LISA HOWKINS
Funeral Director

99 Aylestone Road, Leicester, LE2 7LN
Opposite The Tigers Rugby Ground

0116 319 0752
Day or Night



Pabari's Ratby News. (Est. 21 years)
5 Station Road, Ratby, Leicester. LE6 0JQ.
Tel: 0116 239 3287.



We Deliver Daily, Evening & Sunday Newspapers.

A wide choice of Magazines, Greeting Cards & Stationery.



Sweets, Confectionery, Tobacco, Soft Drinks & Milk.

Top Up Your Mobile Phone, Electric & Gas.

A Vast Selection of Beers, Wines & Spirits



Play The National Lottery Here
Now!

Opening Times:-

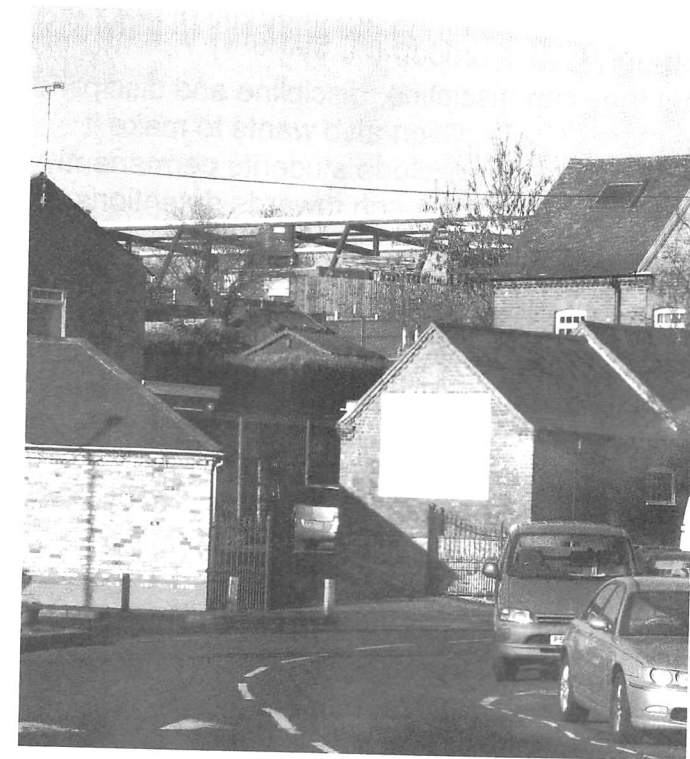
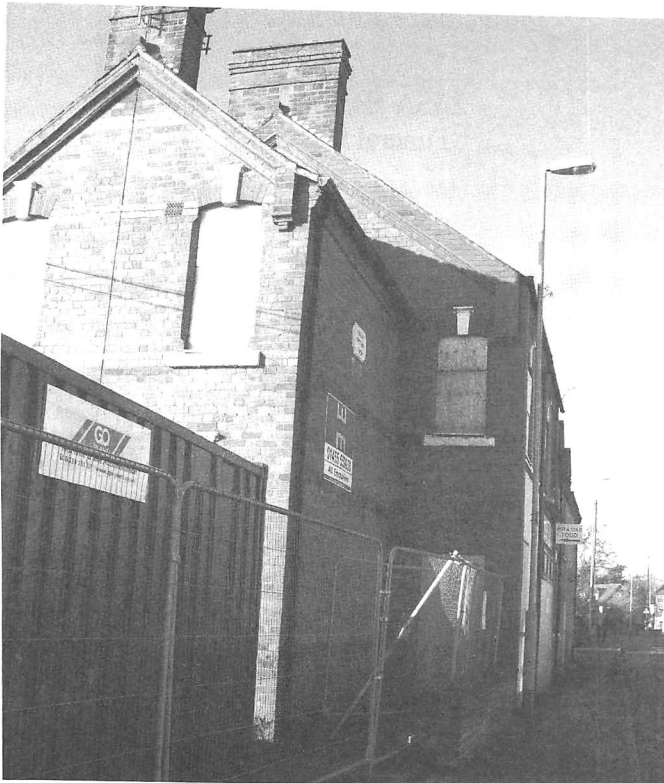
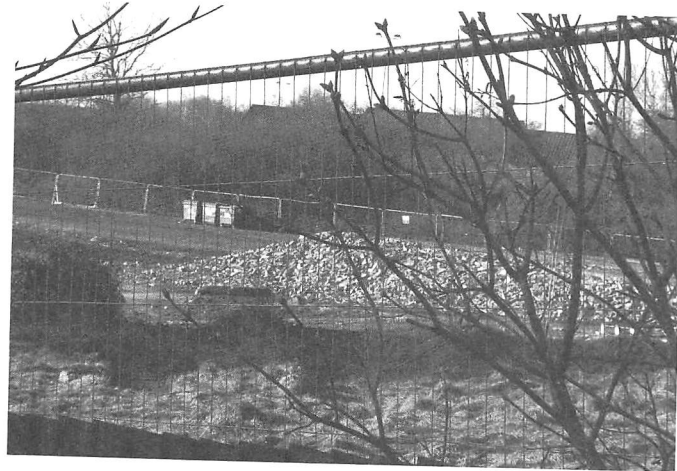
Mon-Fri :- 5.00am to 1.00pm, then 2.30pm till 10.00pm
Sat:- 5.00am through until 10.00pm
Sun:- 7.00am to 2.00pm, then 7.00pm till 9.00pm



OUT WITH THE OLD...IN WITH THE NEW

All that remains of Geary's Bakery, a heap of rubble and a boarded-up building.

Did you work at the bakery? We'd love to hear your stories. Phone Sue on 239 4873 if you'd like to be interviewed for a future article.



The structure of the new sustainable Business Park begins to take shape, visible above the former Box Tree Farm buildings at Desford Lane corner. Just behind the area is the new allotment site referred to on page 1.

A. GOODWIN

CARPENTRY, JOINERY &
PROPERTY REPAIRS

0116 2387316 OR
MOBILE 0777 987 2211

FITTED KITCHENS, BEDROOMS & BATHROOMS

PLUMBING

TIMBER & UPVC WINDOWS / DOORS &
PORCHES

FENCING & GATES

DECORATING, FLOOR & WALL TILING

PLASTERING & COVING

FASCIAS / SOFFITS & GUTTERING

SOLID & LAMINATE FLOORING

RADIATOR COVERS

PLUS ALL PROPERTY MAINTENANCE & REPAIRS

NO JOB TOO SMALL

**"Everything From A Blown Fuse To A
Complete Rewire"**

PAULS QUALITY ELECTRICS

Your Local, Fully Qualified City & Guilds
ELECTRICIAN



Upgrading Old Fuse Boxes - Rewires - Alarm Systems
New Sockets & Lighting - All Domestic & Commercial Electrics

Call Paul Rumble on: (0116) 2872338

MOBILE: 0798 0911 869 Website: www.pqelectrics.com

FAMILY WALKS FROM RATBY

Ratby Village Society is very pleased to have been awarded a grant from the 'Big Lottery Fund' to finance the production of their booklet entitled 'Family Walks from Ratby,' due to be published soon by local company Norwood Press of Ellistown.

The walks have been planned with each member of the family in mind, and vary in length from half a mile to eight miles, taking in Ratby and the surrounding countryside.

It is beautifully illustrated in full colour with pictures painted especially for the booklet by local artists and students from Julia Kent's art class in Ratby.

An initial batch of booklets will be distributed to participating medical centres and surgeries within the Hinckley and Bosworth District, where it can be offered by GPs to those patients they feel will benefit from the improvements to health and well-being associated with walking.

The original pictures from the booklet will be exhibited at Ratby's Fifth Annual Art Exhibition and Craft Fair to be held over two days on Saturday 5th and Sunday 6th November 2011 in the Church Rooms, Church Lane, Ratby.

A COMMUNITY ORCHARD APPLE ANNIE ELIZABETH

Annie Elizabeth is an old-fashioned English cooking apple, possibly a seedling of Blenheim Orange, which it resembles in shape and size, and also in its relatively sweet flavour.

This is one of the best apple varieties for any recipe which calls for an apple which keeps its shape when cooked - interesting, given that Blenheim Orange cooks to a puree.

It is also an easy variety to grow in the garden, fairly resistant to most of the usual diseases and tolerant of the wet mild climates often found in northern Europe. A notable feature is the attractive purple blossom.

It is believed to have been grown by a resident of Knighton, Leicestershire around 1857.



1st RATBY BEAVER SCOUTS

This group is aimed at young persons between 6 to 8 years old (boys or girls)

Meets Mondays between 5.15 & 6.30pm at the Church Rooms.

There is currently a waiting list for this group.

Anyone interested in their child joining the group should contact 0116 239 0774

1st RATBY CUB SCOUTS

Boys and girls are aged between 8 - 10 can join. There are loads of fun things that you can do as a Cub Scout. You will get a chance to try lots of different activities like swimming, exploring, computing, collecting and climbing. If you do them properly you will get a badge which you can wear on your uniform.

Cub Scouts also get to go on trips and days out, to places like the zoo, theme parks or going hiking. Sometimes you will be able to go camping with the rest of your Pack. This will mean sleeping in a tent and doing loads of outdoor activities.

We meet at the Church Rooms on Monday evenings between 6.30 - 8pm

1st RATBY SCOUTS

Boys and girls aged 10 - 14.5 years meet on Thursdays from 7-8.30pm at the Church Rooms.

For more information on any of the above groups Phone 0116 239 0774.



**OAKLANDS
RIDING SCHOOL**

**WE CATER FOR EVERYONE FROM
THE NOVICE TO EXPERIENCED RIDER**

All weather riding area
Ring Julie on 238 7570

News from St Philip and St James

You may remember that last month I mentioned a new venture at church with the start of Community Cinema. So far, two films have been shown in church with encouraging results. The Cafe Church is open from 6pm and light refreshments are available to purchase. This is followed about 6.45pm by the film which is free and open to anyone to attend. Approximately 40 people came to the first showing which rose to 80 for the second film. Films are suitable for all age groups and gives everyone the opportunity to come along for an evening of friendship and fun. We are grateful to the people from our youth group for all the hard work they put into making this venture possible.

During January there was also the national Week of Prayer for Christian Unity. We joined together with our friends from the Methodist Church for a service of worship to celebrate the many things we do together – after all we both serve the same boss!

DEADLINE for issue 147 APRIL/MAY 2011 FRIDAY 11th MARCH

EDITOR 239 3367
ADVERTS 239 3279
ARTICLES 239 4873
Articles may be sent to 3 Ingle Drive
Or Email: sueboud@hotmail.com

LETTERS and ARTICLES

We welcome letters and articles, but reserve the right to edit them or deny publication. Your name and address must be supplied, but you may ask for them to be withheld. Views expressed in articles and letters do not necessarily represent the views of the Publishers. We cannot be held responsible for information in advertisements, which we accept in good faith.

JULIE'S HAIRDRESSING MAIN STREET RATBY

Traditional and Modern Styling
Telephone 239 2406

COME ON IN

For over twenty years the owner of the non-de-plume 'Hoz', (alias Horace Gamble) has been a regular contributor to the pages of Wot about Ratby in various guises.

Late last year he published a book containing seventy poems, some of which have appeared in these pages, entitled 'Come On In, You're Welcome.' (price £6.50)

This has proved to be quite popular. A reprint will soon be available and can be obtained by ordering your copy on 238 7240.

RATBY VILLAGE SOCIETY

Our meetings are all held in the Village Hall, Main Street, Ratby at 8 pm. Everyone welcome.

Don't forget that **Tuesday February 15th** is our AGM and supper. Come and support your committee, socialise, pick up a 2011 programme, and enjoy a wonderful supper.

Tuesday 15th March – come along to the hilarious talk given by Steven Brooks of Glenfield Travel, entitled 'The Funny Side of Travel' based on Steve's thirty years experience in the travel business.



RATBY KNIT and STITCH

On Thursday mornings from 10 until 11 in the morning this informal group meets. Come and join in, bring your own needles and wool, make new friends and share knitting tips.

In the Library.

GAS APPLIANCE SERVICES

0116 239 3662

Appliance Servicing and Installation
Breakdown and Repair Services
Plumbing and Heating Installation
Kitchen and Bathroom Design/Installation
Quality Guaranteed by Experienced Engineers



YOUR DOMESTIC
GAS BOILER
SERVICED

£35+VAT

RECIPE

ROBIN'S GINGERBREAD

Ingredients

125g (4 oz) unsalted butter
300g (11 oz) dark muscovado sugar
2 medium eggs
100 ml (3.5 fl oz) milk
250g (9 oz) plain flour
1 tablespoon ground ginger
1 level teaspoon bicarbonate of soda
100g (3.5 oz) stem ginger, finely chopped + 3 tablespoons of the syrup.

Method

1. Preheat the oven to 180C (160C Fan oven) Gas Mark 4
2. Line a 900g (2lb) loaf tin with greaseproof paper or baking parchment liner.
3. Melt the butter and muscovado sugar in a large pan over a low heat, stirring well with a wooden spoon. Remove from the heat, and then mix in eggs and milk.
4. Sift the flour, ground ginger and bicarbonate of soda directly into the pan.
5. Add the stem ginger and syrup and stir well to combine, breaking up any lumps of flour as you go.
6. Pour the mixture into the lined tin and bake for one hour until a skewer inserted into the centre comes out clean.
7. Cool in the tin for 5 minutes, then turn out, together with parchment, and cool on a wire rack.
8. Remove parchment, slice the loaf and spread with butter if you like.

To store, wrap in Clingfilm and keep in an airtight container for up to a week.

Graville.

RATBY SPORTS FC

Ratby Sports FC have joined the Leicestershire Senior League Premier Division for 2010/2011. The competition is sponsored by Everards and was established in 1903.

The group are looking for committed players. Ring Jason on 07979 158 752.

Check out the Ratby Sports Club on Facebook.

Noisy equipment seized

Nearly 40 items of noise-making equipment - including CD players, televisions, computers and games consoles - were seized from noisy neighbours in Hinckley & Bosworth during 2010.

The equipment was seized by the Pollution Team from the Borough Council's Environmental Health Services section after Noise Abatement Notices served on each of the offenders had failed to stop regular bouts of loud music disturbing neighbours and other residents.

Following three successful prosecutions in Hinckley Magistrates Court, forfeiture orders were issued, which meant the equipment could be destroyed.

However, rather than destroying it, the equipment was donated to The Work-Link Project in Hinckley, which offers a training service to volunteers including the testing of portable appliances. The equipment can then be sold on, meaning it doesn't go to landfill.

The Pollution Team aims to raise awareness about neighbourhood noise and the solutions available to tackle it. It urges everyone to consider the noise they make and the effect it has on others and to do all they can to be a good neighbour.

Anyone who is bothered by noise should call Hinckley and Bosworth Borough Council on 01455 238141 to find out how the Environmental Health's Pollution Team can help them.



RATBY CHEMIST LTD.

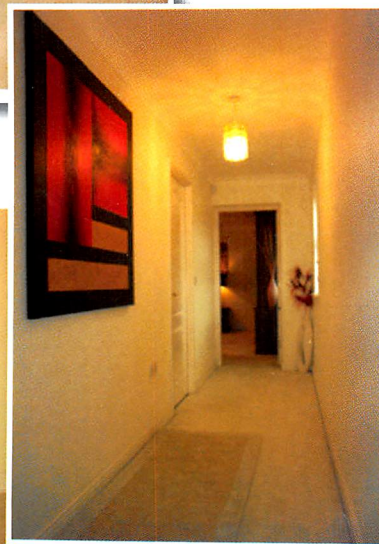
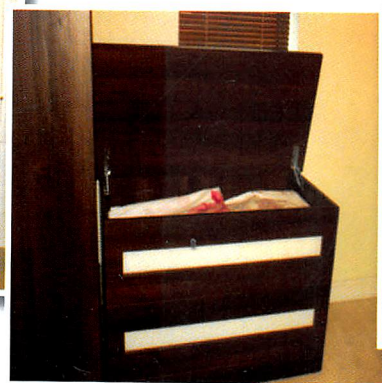
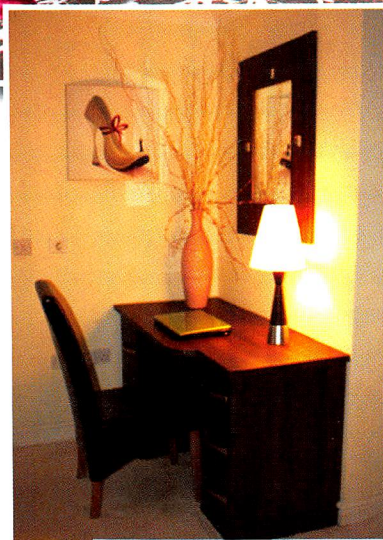
58 MAIN STREET LE6 0LL

***FREE PRESCRIPTION COLLECTION SERVICE! ***

From surrounding surgeries.
JUST PHONE US ON 239 3139 with your requirements. We will process your prescription with the surgery.
All you do is COLLECT IT from us, or we can deliver to your home if needed.
You can e mail us with requirements;
Ratbychemistltd@aol.com

Made to measure Bedroom & Home Office

Lots of choice! Numerous choices of colour and door designs. Classic or modern are all available and at the same price!



Fitted Kitchens

In a recent 'Which' report a recommendation was made that prospective customers would be better served by a local well established business with a known reputation.

Look no further!



Lots of hidden accessories



HORSE and PLOUGH

Continued from page one.
Photos by Steve Boud



The team has arrived from Warwickshire.



A furrow is ploughed.
Photo by Roy Holloway.

THE ROYAL BRITISH LEGION

As many of you must be aware, the Ratby & District Branch of the Royal British Legion has closed and the Standard was laid up in the church during the Armistice Day service.

The Branch was originally opened by the efforts of Karl Twells, the landlord of the Plough Inn, Major Fogarty & others during May 1979. We absorbed various branches in the surrounding area as they closed down, covering Stanton-under-Bardon, Bagworth, Markfield, Botcheston, Groby and part of Desford.

Last year we raised £10,562 for the Poppy Appeal. We do not know yet what will happen regarding this, as the Poppy Appeal part of the Branch is also closing. All details of the collections will be passed to the County Office, who may be able to organise delivery of the collection boxes. Anyone who would like to pursue this, should contact them at the office in Friday Street, Leicester. Tel: 0116 2616584.

Roy Holloway
Vice Chairman, Standard Bearer
& Poppy Appeal Organiser.

Broken Games Console?

We specialise in repairing OUT OF WARRANTY consoles via our cost saving drop-in service.

IT'S EASY call **0116 286 6447**

or find us at the address below.

Once we've given you a quotation we'll get on with the repair and when we've finished you simply collect your console and pay!

www.ipaqrepair.co.uk

We repair the following...

PlayStation 3 • XBOX 360 • PSP
Nintendo Wii • Nintendo DS

Also... **Smart Phones**
iPhones • iPod Touch

5%
discount with
this advert



IPAQ Repair & Parts

Unit 33, King Street Buildings
Enderby, Leicester LE19 4NT

CONSOLE CLINIX

iPhone & iPods
Parts & Repairs

WASSAIL!

Ratby Community Orchard Members and villagers were out in force again on Saturday January 8th to enjoy the annual Wassail of the apple trees.

The group set out from The Railway, led by musicians from Leicester Orphean Orchestra to walk to the Orchard, where the traditional rituals of wassailing and toasting the trees were performed. The Wassail bowl was passed around, and the mulled cider enjoyed.



Leicester Orphean musicians get ready to play



The Wassail bowl is passed around.

Photos by Craig Atton

L **MELSWAY DRIVING SCHOOL**

Mel Shipley D.O.T. A.D.I. M.I.A.M.
All ages welcome....and nervous pupils.
Learn to Drive with MELSWAY. Est. 1991
Telephone 238 6149
3 Barton Close, Ratby.

RATBY LOCAL HISTORY GROUP

CANAL BOAT PEOPLE

The next meeting of Ratby Local History Group will be in the Village Hall, Main Street, Ratby at 7.30pm on Friday 25 March 2011 when Dr. Wendy Freer will talk about "Canal Boat People". After coffee, Ken Hunnybun and Alan Hardy will perform "Songs from the Canals of England".

MORE NEWS

The article: "The History of the Deserted Village of Whittington in Ratby" by Michael Ball and Doug Harwood has been published in "The Transactions of the Leicestershire Archaeological and Historical Society", No. 84, 2010. Offprints are available @ £1 per copy for 24 x A4 pages, subject to availability (Tel. 0116 2394168).

Neil Glenister (Archaeological Warden) has been photographing the stone sculptures of Ratby Parish Church. Many unusual forms have been discovered and the results will be displayed in Ratby Library in the near future.

FAMILY HISTORY

Did you know that in Ratby Library you can access Ancestry Library Edition, Census registers and Parish Records for free?

Just book a session on the computer during Library opening times.

SUPPORT WOT about RATBY

Please support our advertisers, and keep the local magazine alive!

This September we will reach issue no. 150 - which marks 25 years of Ratby Wot!

Established 40 Years.

Glenfield Electronics

- Digital Aerials Fitted *retra*
 - DIY Aerial Supplies
 - LCD & Plasma service
- We fit phone extension points

Tel: 0116 2517 533 www.glenfieldelectronics.co.uk

168 Fosse Road North, Leicester LE3 5ES