

FEBRUARY/MARCH 2009

ISSUE 134



WOT!

About Ratby

PUBLISHED BY RATBY SCOUT GROUP



THE MAGAZINE
with all the
GOOD NEWS!



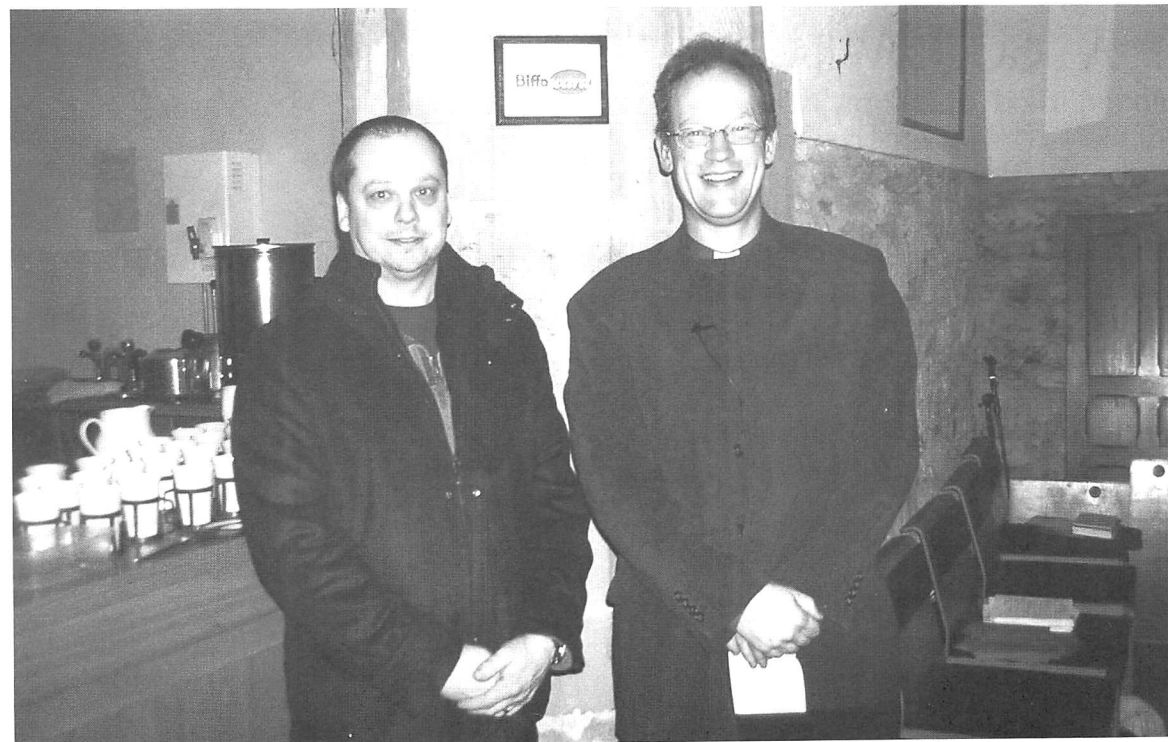
CELEBRATION CONCERT

Parish Church Toilet and Kitchen Area is Open!

On Saturday 10th January the new kitchen and toilet area in the Parish Church was officially opened. The ceremony took place at the packed annual New Year concert by the Ratby Co-operative Band which was a great success as ever. This was an appropriate occasion as the new facilities have been installed with a view to encouraging more community events in the church (as well as more comfort for worshippers!).

The red ribbon was cut by Ratby electrical contractor Sean Bown (www.JSEUK.com), who generously gave his company's time to the project free of charge.

Pictured are Richard Worsfold and Sean Bown, with the new kitchen area in the background.



J S Electrical (Leicester) Ltd



FERNDALE DRIVE

A Development of high quality New Homes
3, 4 & 5 Bed Homes Now Available
Prices from £174,950

Visit our Showhome
on Fielding Lane, off Ferndale Drive, Ratby
Open Friday Saturday and Sunday 12-4pm

**Come and talk to us about an
incentive package to suit your needs**

For further details please contact
Cawrey Limited
Kirby Grange Farm, Taverner Drive, Ratby Leicester LE6 0HQ

Tel: 0116 239 0600

www.cawrey.co.uk

E-Mail: enquiry@cawrey.co.uk

LETTERS TO THE EDITOR

Dear Editor,

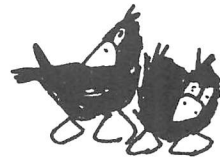
At the beginning of December 2008, we decided to put our Christmas tree up. As we were doing so, we had something pushed through our letterbox.

It was a CD from the Ratby Band. We decided to play it and thought how nice it was and it helped us get into the Christmas mood.

So we just wanted to say a big thank you for putting the CD together and letting the residents of Ratby share some of your music

Nick and Emma Tasker

(Address Supplied)



Wot! a great start to the New Year: Letters celebrating good news and people who bring some cheer into the Village. Let's have more of them!!
Reading through this 134th issue of Wot I am heartened by all the evidence of a thriving community and some fantastic achievements.

Editor.

A. GOODWIN

CARPENTRY, JOINERY &
PROPERTY REPAIRS

0116 2387316 OR
MOBILE 0777 987 2211

FITTED KITCHENS, BEDROOMS & BATHROOMS

PLUMBING

TIMBER & UPVC WINDOWS / DOORS &
PORCHES

FENCING & GATES

DECORATING, FLOOR & WALL TILING

PLASTERING & COVING

FASCIAS / SOFFITS & GUTTERING

SOLID & LAMINATE FLOORING

RADIATOR COVERS

PLUS ALL PROPERTY MAINTENANCE & REPAIRS

NO JOB TOO SMALL

Dear Editor,

I am writing to see if you would enclose a photo of our Postman. He is such a pleasant man. I really know he'd laugh at an article about him. Many thanks, keep up the good work. We don't always get a copy of Wot but enjoy them when we do.

'On behalf of the people of Ratby may I say a big thank you to our local postman, Shaun Merriman. He always has a smile or friendly wave for young and old. There aren't many folk who seem to enjoy their job as he does.'
Maybe we should have a regular 'Wot' look and see who else in our village helps to make life feel good.

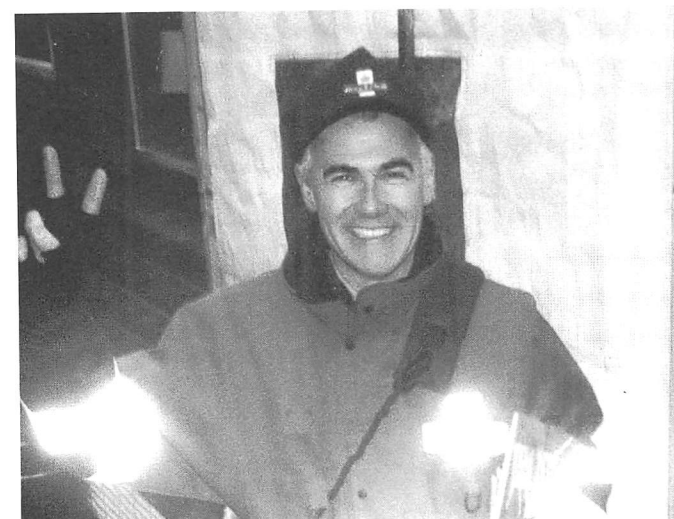
Barbara Lee

(address supplied)

A good idea....we would welcome suggestions for future editions! Any recommendations, villagers?

Sorry to hear you don't always get a copy of Wot. I will pass this on to the delivery team. You can always pick up a copy in the Library. Editor

Picture of Shaun sent in by the writer.



GAS APPLIANCE SERVICES

- Appliance Servicing and Installation
- Breakdown and Repair Services
- Plumbing and Heating Installation
- Kitchen & Bathroom Design and Installation
- Quality Guaranteed by Experienced Engineers

YOUR DOMESTIC GAS BOILER SERVICED

£30

6 SAXONS RISE RATBY LEICS LE6 0NF

WOT CREDIT CRUNCH?

Well done Ratby Village you did it again! The proceeds of our pre-Christmas Toy Sale at The Chapel, and donations realised £300 for the Rainbows Children's Hospice Appeal.

We join the treasurer of Rainbows in thanking residents and friends beyond the village who generously donated or purchased these lovely, quality toys.

Thank you to all who helped in any way.



ANTI-LITTER POSTER COMPETITION

Ratby Village Society's Anti-litter group recently organised a poster competition to promote positive action on taking litter home, recycling, and keeping the village tidy.

The Head of Art at Groby Community College, Deborah Law was approached for help. She quickly got students motivated, and the exciting and innovative ideas they came up with were absolutely brilliant.

I was difficult to choose just three prizewinners, but the judges finally decided on joint runners up Lorna Boyer and Stacey Coxon. James Hickingbottom was overall winner with his poster, 'Recycle Old Attitudes for a Brighter Future and Don't Litter.'

All three winning posters can be seen in village shops, Library, Village Hall and School.

We are most grateful to the students and teachers for their enthusiastic involvement.



HARD TIMES

With all the gloom and doom about the 'Credit crunch', we thought we'd cheer you up with some Tips for Household Economy from Great Grandma's book published around 1900. The English are renowned for their 'cheering cups of tea', so here are ways to make that packet go further!

Tea Hints

When buying tea, before using it spread it on a sheet of paper and place it in a warm, but not too hot oven from 10 to 15 minutes.

By doing this the tea will be made to go much further and the flavour will be greatly improved.

Don't throw the used tea leaves away. Collect a weeks leaves in a pail. Pour over them 1 quart of boiling water and leave for one hour. Strain and bottle the brown liquid. This is a splendid gloss maker if used with a soft piece of flannel on mirrors, glasses or windows. Kettles are essential to the tea making ritual, and here are some practical ideas to keep them in good order;

To clean a furred kettle

Fill it with potato peelings and a little water. Boil fast until clean. To prevent furring place an oyster shell inside the kettle.

New kettles

To remove the 'iron' taste, boil a handful of hay in the kettle, and if necessary repeat the process.

There are also recipes in the book for cooking sheep's heads and trotters, using sour milk, hints for checking whether tinned food is 'poisoned' or water is contaminated.

If demand is there we will be happy to publish more tips for saving pennies!!

"Everything From A Blown Fuse To A Complete Rewire"

PAULS QUALITY ELECTRICS

Your Local, Fully Qualified City & Guilds
ELECTRICIAN



Upgrading Old Fuse Boxes - Rewires - Alarm Systems
New Sockets & Lighting - All Domestic & Commercial Electrics

Call Paul Rumble on: (0116) 2872338
MOBILE 07200 0044 260 Website: www.paulselectrics.com

News from St Philip and St James

Having celebrated a great Christmas up on the hill we've begun the New Year in an equally exciting way.

We were host to a joint service for churches in this area which are forming a new group to be called 'Forest Edge Partnership'. A large congregation was surprised to find three intrepid people up in the rafters who begun the service by abseiling down and things went on from there in a very different fashion to what one would normally expect. With such a tremendous start we can only wonder what the rest of the year has in store for us. Don't forget – you are also invited to come and find out for yourself. Happy New Year.

HIS and HERS

LADIES AND GENTS HAIR DRESSING

OAPs REDUCED RATES
Appointments not always necessary.

156 STATION ROAD, RATBY
239 4429

Pabari's Ratby News. (Est. 21 years)
5 Station Road, Ratby, Leicester, LE6 0JQ.
Tel: 0116 239 3287.



We Deliver Daily, Evening & Sunday Newspapers.

A wide choice of Magazines,
Greeting Cards &
Stationery.



Sweets, Confectionery,
Tobacco, Soft Drinks & Milk.

Top Up Your Mobile Phone, Electric & Gas.

A Fast Selection of Beers, Wines & Spirits

Play The National Lottery Here
Now!

Opening Times:-
Mon-Fri :- 5.00am to 1.00pm, then 2.30pm till 10.00pm
Sat:- 5.00am through until 10.00pm
Sun:- 7.00am to 2.00pm, then 7.00pm till 9.00pm



RATBY METHODIST CHURCH

Events at Ratby Methodist Church for our 2008/2009 charity, the *Smile Train*, continue with two more in the coming weeks. To date, the total raised stands at £584.

We look forward to your support at either or both of these events.

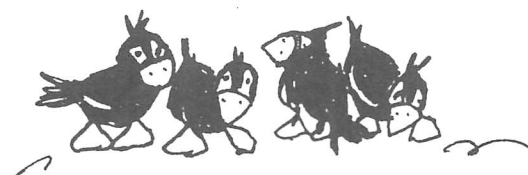
Jumble Sale Saturday 21st February 10.00 am

Suitable items may be brought to chapel on Friday 20th February between 6.00 pm and 7.00pm.

On Friday 27th March at 7.00 pm the **Chantry Choir** invites you to
Supper Serenades
Buffet Supper and Musical Entertainment with guest celebrity **Clive Edwards**

Admission £6
by ticket only
Tel: 0116 2386321
or 0116 2874042

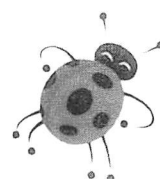
A future date to note is **Wednesday 27th May** when there will be a **Beetle Drive** at **2.30 pm**. Last year's was a most enjoyable afternoon and we look forward to a repeat.



THE SERVICE GARAGE

MAIN STREET, RATBY
M.O.T TESTS
CARS (PETROL and DIESEL)

M.O.T. HOURS 9.00-4.15 Monday-Friday
Closed for lunch 1-2
TELEPHONE 239 4966



Don't forget **Wriggly Readers** in Ratby Library.

Baby and Toddler Story Times

4th Thursday of every month. For 0-4 year olds (and their grown-ups) 2:00-2:30 pm
February 26th March 26th April 23rd May 28th June 25th



A RATBY CHRISTMAS

Everyone in Ratby received a copy of the Ratby Co-operative Band CD to celebrate Christmas. This wonderful and much appreciated gift was made possible by Youth Bank. In response to many requests the Band have sent in this Track List;

SENIOR BAND (conducted by Michael Fowles)
1) Angels from the Realms of Glory ~ arranged by Darrol Barry
2) The Irish Carol ~ Traditional arranged by Philip Harper
3) Hark! The Herald Angels Sing ~ Mendelssohn arranged by David Willcocks
4) Santa Claus-trophobia ~ arranged by Sandy Smith
5) A Christmas Fantasy ~ Gordon Langford

JUNIOR BAND (conducted by Becky Moss)
6) It's Christmas Time! ~ Oliver Mann
7) Christmas Mallets (Fantasy for Percussion) ~ Michael Fowles. [Soloist: Ellie Wingett]
8) Last Christmas ~ George Michael arranged Frank Bernaerts
9) Away in a Manger ~ arranged by William Kirkpatrick
10) When You Make a Christmas Wish ~ Darrol Barry
11) Frosty the Snowman ~ arranged by Chris Fordson

BEGINNER BAND (conducted by Geoff Newman)
12) Good King Wenceslas
13) Twinkle, Twinkle Christmas Star
14) Jingle Bells

MID BAND (conducted by Geoff Newman)
15) All I Want For Christmas Is You ~ arranged by Frank Bernaerts
16) The Normandy Carol ~ Robert Redhead
17) Zither Carol ~ Czech Folk Tune arranged by Bolton and Banks
18) The Christmas Song ~ Torme and Wells arranged by Philip Sparke. [Soloist: Andy Gardner]
19) Rockin' Around the Christmas Tree ~ Carstens and De Waal arranged by Derek Broadbent



**OAKLANDS
RIDING SCHOOL**

WE CATER FOR EVERYONE FROM
THE NOVICE TO EXPERIENCED RIDER

All weather riding area
Ring Julie on 238 7570

RECIPE

Tyler Yogurt Cake

Ingredients

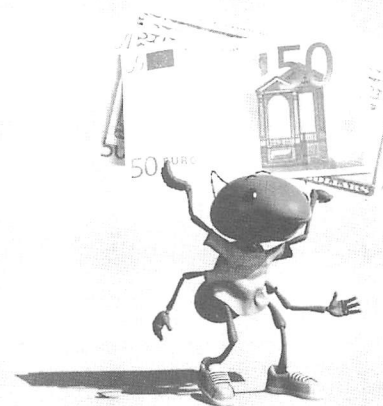
180 ml (95 oz) carton plain yogurt (use carton to measure ingredients)
2 cartons caster sugar
3 cartons SR flour
1 carton cooking oil
3 eggs
1 teaspoon vanilla essence.

Method

1 Preheat oven to 350F, GAS Mark 4, 180C
2 Mix all ingredients together, (this can be in a blender or liquidiser)
3 Pour into a lightly oiled 1kg/2lb loaf tin, and bake for 40-45 minutes.

Delicious cooled, sliced on its own, or served hot with custard as a pudding. It is even better served sliced into a dish with fresh or tinned fruit, a little cream or jelly.

Graville



POST OFFICE

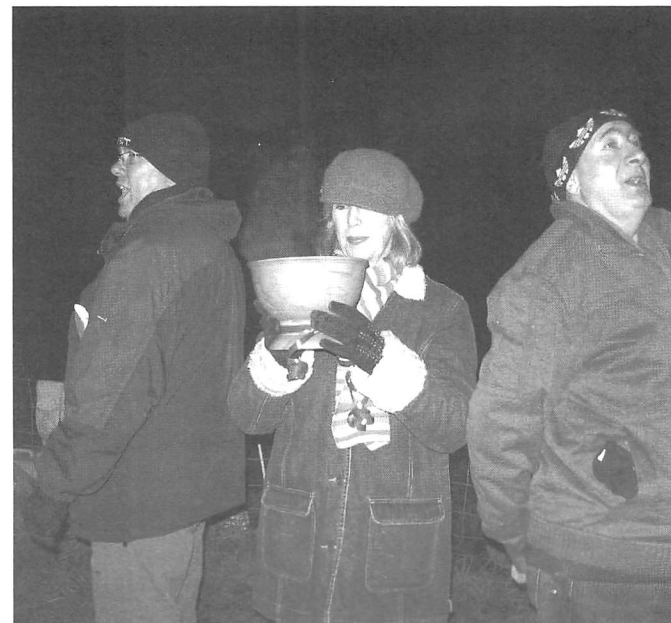
A TRADITIONAL TOAST

Ratby Community Orchard members celebrated this annual event on Saturday January 10th. Members processed to the Orchard to Wassail and toast the apple trees. A large band of musicians from Leicester Orphean Orchestra led us magnificently in the Wassail songs. We passed around the Wassail bowl and 'wassailed' the trees with mulled cider. Our bowl, serving us for many years now, was made of sycamore in the traditional way by wood turners in the Forest of Dean.

This year we again chose one tree to receive the special 'blessing.' Annie Elizabeth needed our attention this year, having suffered from dogs stripping the bark.

Damage from dogs seems to be on the increase, so please villagers, keep your pets away from the trees. Such damage is likely to kill them.

Thank you to The Railway for welcoming us before and after the Wassail!



CARETAKER /CLEANER NEEDED

Ratby Senior Citizens Welfare Association need a Caretaker/Cleaner for the Village Hall. You will need to be available from Monday to Saturday as required to open and close the building as necessary for functions. Committee members are available to cover for holidays and other commitments.

For further information please contact; Elaine Sharp on 0116 238 7193

Pictured are village members passing round the Wassail bowl.

Porter's Discount Carpets

121/3 STATION ROAD, RATBY

TELEPHONE 239 3238 or 239 5202. MOBILE 07860 551142

QUALITY AT THE
RIGHT PRICE

SHOP AT HOME
SERVICE



ask for it by name!

Laminated Flooring

FREE FITTING
ON ALL CARPETS
EXCEPT REMNANTS



GEORGIAN
CARPETS



RATBY WOMEN'S INSTITUTE

What a wonderful start to our 2009 Programme. Monica Winfield of Radio Leicester explained her role as 'Street Pastor.' She and her team go out around the centre of Leicester on Friday and Saturday evenings giving comfort, help and assistance wherever it is needed. She told us of some of the interesting people she meets and the situations she is able to help with.

Money raised from giving these talks goes towards the cost of running the service. If you are interested in what your local WI does then you are welcome to visit us at one of our meetings, where you can meet members and find out what we have planned for the year. We meet on the second Wednesday of each month, at 7.30 p.m. in The Village Hall on Main Street. Your first visit is free. Membership is £29 a year which includes receipt of 8 copies of the National Women's Institute magazine. Phone the President on 0116 238 6398 for more details.



Did you do the RSPB bird count this year in January? Please write in and tell us about it!

A.H.COLEY

Plumbing and Heating Repairs
New Installations, Bathrooms, Showers

For a full range of Services contact;
4 Saxons Rise
RATBY LE6 0NF

Telephone 239 4277

RATBY CHEMIST LTD.

58 MAIN STREET LE6 0LL

*FREE PRESCRIPTION COLLECTION
SERVICE! *

From surrounding surgeries.
JUST PHONE US ON 239 3139 with your requirements. We will process your prescription with the surgery.
All you do is COLLECT IT from us, or we can deliver to your home if needed.
You can e mail us with requirements;

EXHIBITION and CRAFT FAIR

Ratby's annual Art Exhibition, held in the Village Hall was once again a great success. The high standard shown by local artists has developed greatly over the last twelve months, in particular the work of Don Fell with his painting 'Brancaster Staithe.' Sid Jordan showed three stunning watercolours, including 'Roses,' and Nigel Astill's 'Don't Eat It,' (Adam and Eve) oil on canvas was excellent. Horace Gamble's watercolour, 'Shades of Stephenson' was superb, as was Julia Kent's mixed media 'Sunny Courtyard.'

The calligraphy of Sheila Ross showed a masterful pen technique combined with expert knowledge of colour and design. Each and every one of the pictures on display showed enormous talent and exciting new ideas and ways of working onto paper or canvas.

We look forward to November 2009's event with great expectations!

Jane Rayne

JULIE'S HAIRDRESSING

MAIN STREET RATBY

Traditional and Modern Styling

Telephone 239 2406

DEADLINE for issue 135

APRIL/MAY 2009

FRIDAY 13th MARCH

EDITOR 239 3367

ADVERTS 239 3279

ARTICLES 239 4873

Articles may be sent to 3 Ingle Drive
Or Email: sueboud@hotmail.com

LETTERS and ARTICLES

We welcome letters and articles, but reserve the right to edit them or refuse to publish them. Your name and address must be supplied, but you may ask for them to be withheld. Views expressed in articles and letters do not necessarily represent the views of the Publishers. We cannot be held responsible for information in