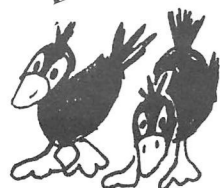


RATBY MEMORIES  
SOUVENIR  
EDITION



# Wot! About Ratby

PUBLISHED BY THE RATBY SCOUT GROUP

MILLENNIUM EVENTS  
CENTRE PAGE PULL  
OUT



ISSUE 80

FEBRUARY 2000

## RATBY MARCHES INTO THE MILLENNIUM

The Millennium started off in great style here on Sunday January 2nd. Ratby Co-operative Band put out on show the BIGGEST village Brass Band in the whole country, every player being a fully paid up member. The Band marched from the top to the bottom of Ratby, playing The Millennium March specially composed for the occasion by Ratby lad Geoff Newman. Lots of villagers joined in behind the Ratby Brownies and Rainbows, and many more lined the route, all happy and smiling on a beautiful sunny day.

There were plenty of 'hot toddies' and drinks for everyone down at the Bandroom, after which many made their way to the Parish Church for a special service arranged by the Vicar, Richard Worsfold. Music again provided by the Band, with Derry Hurd on the organ. All in all a cracking start to the new Century, Geoff Newman's idea and some sound planning showing that once again Ratby can do it!

Phil Plant

Photo by Mr M J Callis



NOW AT YOUR LOCAL

**EURONICS CENTRE**

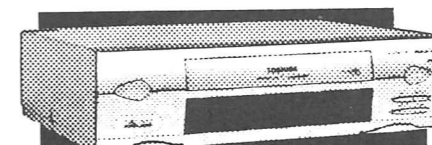
# HOME ENTERTAINMENT AS YOU'VE NEVER EXPERIENCED IT BEFORE!



**TOSHIBA**  
Widescreen  
Dolby Pro-Logic TV  
● 28"/66cm Widescreen TV  
● Dolby Pro-Logic  
Surround Sound  
● 100Hz Digital Scan  
● 65 Watts RMS  
Model 28MW7DB  
**£999.99**



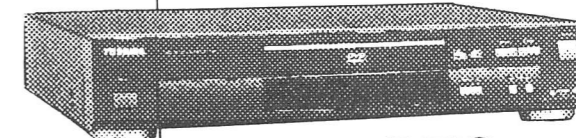
**TOSHIBA NICAM TV**  
● 28"/66cm TV  
● NICAM Digital Stereo Sound  
● Exclusive to Euronics  
● Includes Cabinet  
Model 2893DB  
**£449.99**



**TOSHIBA NICAM VCR**  
● NICAM Video  
● Videoplus Deluxe and PDC  
● On-Screen Programming  
● Advanced One Touch  
Record  
Model V729B

**£249.99**

**TOSHIBA DVD Player**  
● MPEG2/Dolby Digital/DTS  
● 10 Bit Video D/A Converter  
● 24 Bit/96Khz Audio D/A Converter  
● DVD/CD Compatible

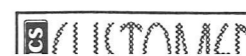


Model SD2109B **£279.99**

We are an independent  
retailer - with friendly local  
service and personal attention -  
but we're also members of EURONICS -  
Europe's biggest independent electrical buying  
group, which means we can offer you the very best  
deals on the highest quality brand names!



23-27 Station Road, Ratby,  
Leicestershire LE16 9JG



TOP BRANDS AT  
LOW PRICES  
SPECIAL OFFERS

Your Local  
**EURONICS**  
CENTRE

## WOT FUTURE?

Here we are with our first issue of the new Millennium; number 80. Little did we think those thirteen years ago that the magazine would still be produced into the Twenty-first Century.

We've had our ups and downs, but still we keep on going. Dependent as we are on volunteers it is not always possible to be perfect. We can only do our best. We know that some people don't always receive a copy, and we apologise. There are always spare copies in the library.

Sometimes articles go astray and are missed out. Our new Millennium resolution will be to try and do better.

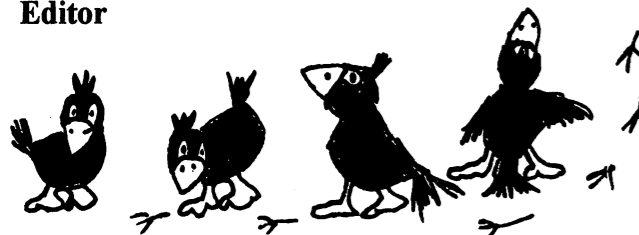
And we hope that more of you will contribute to Wot! in the future. Special thanks are due to those village businesses who have supported us from the very beginning, Porter's Carpets, RTV, Gas Appliance Services, Pabaris, Ratby Post Office, Julie's Hairdressing and The Service Garage. Without you it would have been impossible to keep going.

Thanks too to those advertisers who have recently joined us, and those who have helped along the way. A look back through past issues gives a picture of the village business life, small shops such as Widdowson's Greengrocer closing as a result of supermarket domination. Small businesses such as a Baby Clothes shop and a Florist opened up by enterprising people, only to close through lack of support.

Compared to many large villages, we are fortunate to have a range of services, Hairdressers, shops, pubs, take-aways, a Post Office and a garage which together form the heart of the community.

**Let's all work together to support these businesses so that they will still exist well into the next Century.**

Editor



## RATBY PRE SCHOOL

**Ratby Pre School welcomes you and your child into a friendly, stimulating and safe environment with fully qualified Pre School Leaders and Helpers.**

**We are open every day  
Monday to Friday  
9.15am - 11.45am**

**Afternoon sessions  
Monday, Tuesday, Thursday  
1pm - 3.30pm**

**Monday and Thursday afternoon,  
Pre School rising 5 sessions only**

**Come along to visit and stay for a Session with your child or contact Janet Simmonds or Sue Poynor, Pre School leaders for an informal chat or register your child by calling**

**07790 569216**

**The Church Rooms, Church Lane Ratby**

## EVENTS DIARY AND PICTURE MEMORIES

Thank you to Ratby Parish Council and the village businesses who have sponsored the special pages in this issue.

Our aim was to create a special pullout centre page for you to pin on your notice board or just keep for reference. It's a handy guide to the **village events** during the year, produced by the Millennium Consortium Group, and a useful reference page for local services.

Take out the pull out diary and you will reveal the photo-spread. Here are some of the photographs collected by the Millennium Photography Project. They are still collecting, and welcome contributions. They will copy photographs and scan them onto computer disc so that you may keep your original. Phone 238 7240 for more information.

## St. Philip and St. James Ratby

On Wednesday 12th January, after an inspection of the dry rot affected areas of Ratby Church by church and English Heritage architects, the Church was closed for safety reasons, pending completion of essential dry rot treatment and reroofing.

The inspection revealed that the base of the rafters and roof trusses (along the arches where St. Michael's Chapel joins the main aisle) had been eaten away to a much greater extent than was previously suspected.

The good news is that it looks like English Heritage are now wanting to support the restoration campaign and if there is any money left in this year's nation-wide emergency fund the Church should be in line for a grant. At the very least it should be a high priority case when the new allocation for the East Midlands opens in April.

The plan is still to start the reroofing work in April, work which will last at least 4 months. So even if everything goes according to plan, it looks like the church building will be out of commission until late summer at the earliest.

The campaign fund stands at just over £20,000, but the target figure just to deal with the urgent dry rot treatment and reroofing (leaving aside the tower repairs) could be as much as £100,000. Even with a grant from English Heritage and other charities/grant-making bodies, there is a long way to go in terms of fund-raising. The support of the whole local community will be needed if this target is to be met by April.

During this time of temporary closure, services will be held in the Church Rooms and also jointly with the Methodists. Details of services are printed in the Church Magazine and on the Church noticeboard.

Weddings that were scheduled for Ratby will be taking place elsewhere in the Bradgate Team Parish, in both Groby and Newtown Linford.

Some funerals will be held in the Methodist Church and some in Groby Church. Baptisms will be taking place in the main morning services in the Church Rooms.

## How Can We Help?

### 1. **Support the Gift Weekend on 11th/12th March**

**Saturday Morning:  
Millennium Mile of Pennies leading up to Ratby Church.**

- ⇒ **If we make the mile we'll raise thousands!**
- ⇒ **Start collecting your pennies now - 1ps, 2ps, 5ps 10ps!**
- ⇒ **Tell your friends/relations to come along and bring their coins!**

**Grand Teddy Bear Parachute Jump from the Church Tower**

- ⇒ **See how brave your teddy bear is!**
- ⇒ **Prizes for best equipped teddies and for those that travel the farthest!**

**Sponsored Abseil from Tower (subject to health and safety clearance)**

### Sunday Morning

**10.30am Special Gift Service in Church Rooms  
Preacher, the Archdeacon of Loughborough**

### 2. **Pick up a Campaign Leaflet and Pass it to a Friend/Relative**

If you have a friend or relative who used to live in Ratby and who might be concerned about the closure of the church, why not tell them about the restoration campaign or give them a campaign leaflet (available from Library or Alliance and Leicester on Main Street)

### 3. **Consider making a gift to the restoration campaign (if you haven't already done so)**

Cheques should be made payable to 'Ratby Parish Church Roof Fund' and can be returned to the Vicarage, 15 Groby Road, Ratby.

**Sponsored by Gas Appliance Services - Leicester**

6 Saxons Rise, Ratby, Leicester LE6 0NF.  
Tel: Office 0116-2393662

## Headteacher's Whirlwind Six Years

Six years ago when a figure (our new headteacher Mrs Lewis) in a little red car swept into Ratby school car park little did anyone realise what an impact she would have on Ratby Primary school, its pupils and staff.

With her extensive knowledge of available resources, staff and management, she set about transforming the school and its resources into an up to date 21st century school Ratby village can be proud of.

To those who voiced to the governors of that time, on her appointment, that they thought Ratby needed a male headteacher, may I make reference to Queen Elizabeth 1<sup>st</sup> speech to her soldiers before battle. Mrs Sismey set about her modernisation with gusto. In came noise-deadening carpets in all classrooms and hallways in bright lively colours with classrooms painted to match. Every turn in the school set the senses reeling with yet more bright warm and pastel shading.

Lighting, coat hanging, playing field facilities and I.T. computing was updated in every classroom

The whole ethos of the school began to change. With pupils needs met, her next goal was to improve the cramped working conditions that the school secretaries endured with a bright new reception area and office near the main entrance doors.

A new staff room appeared after a summer-break where a little used courtyard had been.

A pupils behaviour policy were implemented as were school uniforms. So well, was this carried out that almost every child when asked would quote the policy word for word. Of course the teachers, Governors, school association and parents have played a very important part in making this happen too.

New playground equipment library books, sports items were all gained from fund raising to name but a few.

Pre-school children, their parents and under five's were all made to feel it was their school.

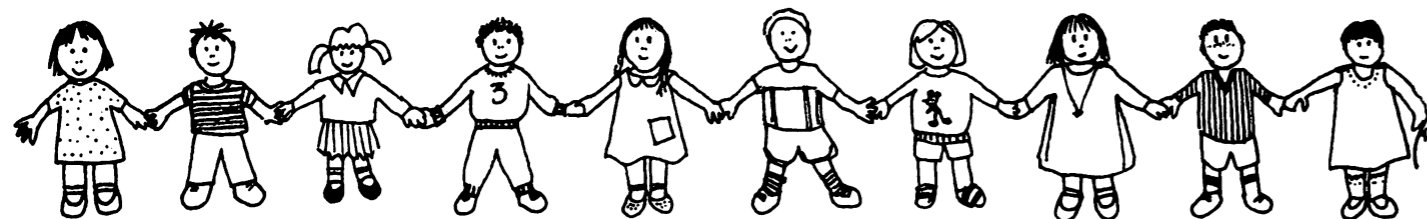
When asked before she left the school in December 1999, what she would like to say about her time at Ratby school Mrs Sismey said "That she had strived to further the schools links with village organisations and the church and had enjoyed her time at Ratby."

Mrs Sismey can be proud to stand back and say "we achieved all that in just six years."

Now she has swept off again in that little car to transform yet another school at Birstall in Leicestershire.

I wonder if they know what lays in store for them.

Sylvia Gant



Mobile Phone Top-up  
Cards now available

**VODAPHONE**  
**CELLNET**  
**ONE 2 ONE**  
**ORANGE**

Going Abroad? Don't  
forget we can offer  
the following

**Travel Insurance**  
**Foreign Currency**  
**E111 Medical forms**

Remember you can cash  
cheques and make deposits  
for these banks at your  
local Post Office

**LLOYDS TSB** **CO-OP BANK**  
**A & L** **GIROBANK**

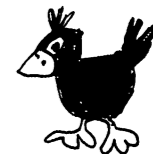
**RATBY**  
**POST**  
**OFFICE**

Main Street  
Ratby  
Tel: 239 3001

And we also sell stamps!!!



## Ratby Parish Council



### Can we Mention the "M" Word?

Happy New Millennium! What did you do to celebrate? Have you got over it yet? Of course, there is a very strong argument that we've all celebrated the wrong date and it is 31<sup>st</sup> December 2000 that completes the twentieth century... So what were all the parties and fireworks about on New Year's Eve then? Does it matter? Isn't the most important thing the fact that lots of us were out there at midnight watching the fireworks (set off by several households and enjoyed by even more) and literally yelling good wishes to each other? That is what living in a village is all about, a community where everyone can make a difference – if they want to.

There is ever-increasing pressure and stress in our lives and it is good to live in a place where the pace of life, in many ways, doesn't change. In these times when more people than ever before feel isolated or lonely it is encouraging to live somewhere where folk still say "Hello" to each other in the street, which is more than can be said for most places. We don't want to become too "right-on" and strangled by political correctness but it is possible to move with the times *and* maintain a traditional village atmosphere.

Having said that, are you fed up with all the hype and media stories that make you feel guilty about not changing your house, your garden, your appearance and even your entire lifestyle? If we could, is there anything we would change in Ratby? We already have a lot to be proud of – our own identity and a very rich history. We will shortly have our own specially designed village sign, which depicts the achievements and contribution that have been made (and continue to be made) to this village and the surrounding community. There will be a special ceremony to unveil the

sign – watch for details of what, where and when.

The village also has a new asset in that, for the first time, we will have Parish Council offices (the address is below). (This will mean that our hard working Clerk can have the space back in her house!) There are several changes in the membership of the Council and the next issue of Wot! will have more details of who we are.

If the Parish Council were to make a pledge for the new Millennium it would be simply to renew our resolution to do our best for the community. You can help us. Come to our Monthly meetings and tell us what you would like to see (or merely check that the Councillors don't all have two heads!). Whatever your reason you will be most welcome.

One of the issues that seems to concern many of us is the amount of traffic and the problems with parking throughout the village. The annual Parish Council meeting in May will include an open forum to hear what the problems are and discuss your ideas for improving the situation. If we have an organised campaign for the entire village, perhaps the powers that be will listen to us – we should at least try.

We're not suddenly all going to become "do-gooders" but we can help each other and the village to muddle through this Millennium (probably in much the same way that we muddled through the last one!). And if we don't make much progress this year, well, we can celebrate the Millennium on next New Year's Eve and start all over again in 2001!

New Parish Council offices will be open from the end of February.

Address: 13, Station Road, Ratby. Telephone: 0116 2390167

**A ROOT and  
SONS  
DAIRY MAN**  
Wish Ratby Villagers  
a Happy and Healthy  
Millennium  
\*\*\*

**PLOUGH INN**  
David and Paula  
would like to offer a  
warm welcome to  
villagers during the  
Millennium

**TARGET  
PRIVATE HIRE**  
Best wishes for a  
Happy Millennium to  
our customers old and  
new

**PORTERS  
DISCOUNT  
CARPETS**  
All good wishes to  
Ratby Villagers for the  
Millennium

**RATBY POST  
OFFICE**  
Best wishes for a  
happy and prosperous  
Millennium to Ratby  
villagers

**THE SERVICE  
GARAGE**  
Happy motoring to  
Ratby Villagers in the  
new Century

**PIPS  
PRIVATE HIRE**  
Best Wishes for  
A Happy and  
prosperous  
Millennium

**DISC CO 2000**  
Ben and Vicky wish  
Ratby Villagers happy  
video viewing and  
game playing for the  
Millennium

**A.H. COLEY**  
Plumbing and  
Heating  
Wishing Ratby  
Villagers a warm and  
Prosperous Millennium

**PABARI'S  
RATBY  
NEWS**  
Wishing everyone a  
Happy and Prosperous  
Millennium

**RATBY  
PHARMACY**  
Wishing Ratby  
villagers a happy  
and healthy  
Millennium

**CAWREY  
LIMITED**  
'We have a new  
Millennium Home For  
You'  
Tel. 239 0600  
w.w.w. Cawrey.co.uk.

**RTV**  
Wish all our customers  
old and new a happy  
and prosperous  
Millennium

**FREEMANS  
BUTCHERS**  
Best wishes to  
customers old and new  
for the Millennium

**CASTLE  
OPTICIANS**  
Happy new  
Millennium and  
thanks for all the  
support

**JOHNSON'S  
GENERAL STORE**  
81 STAMFORD ST.  
Best wishes for the  
new Century to our  
valued customers, old  
and new

**RATBY POST  
OFFICE**  
Best wishes for a  
happy and prosperous  
Millennium to Ratby  
villagers

**THE SERVICE  
GARAGE**  
Happy motoring to  
Ratby Villagers in the  
new Century

**PIPS  
PRIVATE HIRE**  
Best Wishes for  
A Happy and  
prosperous  
Millennium

**DISC CO 2000**  
Ben and Vicky wish  
Ratby Villagers happy  
video viewing and  
game playing for the  
Millennium

**GAS  
APPLIANCE  
SERVICES**  
Best Wishes to All for  
a Happy and warm  
Millennium

**RATBY FISH  
BAR**  
Wishing all our  
customers a happy  
Millennium

**PETER COMLEY  
CHIROPODIST**  
Would like to wish  
Ratby villagers a  
Happy, problem  
free Millennium

**MELSWAY  
DRIVING SCHOOL**  
Wishing Ratby Villagers  
Happy and Safe Driving  
for the Millennium

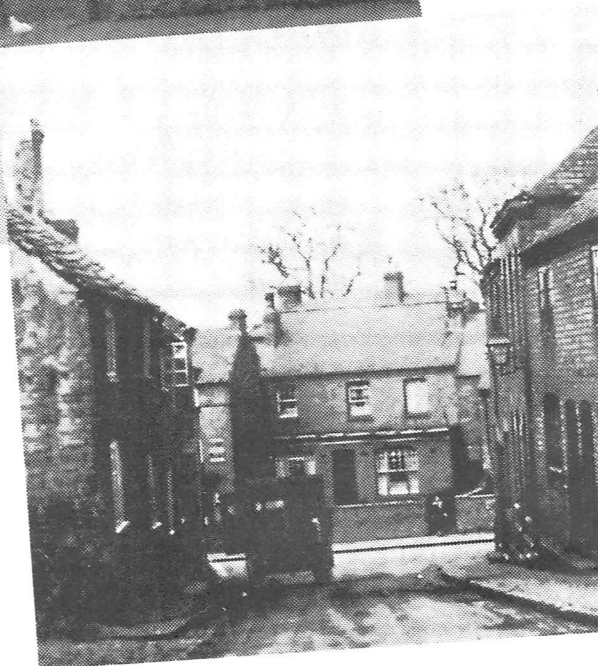
**JULIE'S  
HAIRDRESSING**  
Wishing Ratby people  
a Wonderful  
Millennium

## MEMORIES OF RATBY IN THE 20th CENTURY

The Bull's Head and farm. Do you know  
why the building is decorated?  
The corner of Church Lane and Main  
Street, with part of Freeman's Butcher  
Shop just visible on the right.



Chapel Lane



A Village Parade, perhaps Royal British  
Legion, passing shops which were  
demolished for the Co-operative Store.  
We'd love to hear recollections of these  
shops.

**ALPINE  
CLEANING  
SERVICES**  
Wish Ratby Residents  
a Happy Millennium  
\*\*\*\*\*

**HIS and HERS  
HAIRDRESSING**  
\*\*\*  
Wishing Ratby  
Villagers a Happy  
Millennium

**MOORES  
of RATBY**  
Best wishes from John  
and the staff for the  
Millennium

# RATBY'S OWN 2000 EVENTS DIARY

SPONSORED BY RATBY PARISH COUNCIL

DATE & TIME	EVENT	ORGANISERS	VENUE
<b>FEBRUARY</b>			
Sat 5 <sup>th</sup> 10-00	Coffee Morning	Methodist Church	Chapel
Wed 9 <sup>th</sup> 7-45	Talk – Madagascar	Women's Institute	Welfare Hall
Sun 6 <sup>th</sup> tba	Bring and Share Lunch	Parish Church	Church Room
Sat 12 <sup>th</sup> 10-00	Coffee Morning	Parish Church	Church Room
Sat 12 <sup>th</sup> 4-00	Millennium Tea & Concert	Evergreens	Welfare Hall
Sat 12 <sup>th</sup> 7-30	Ratby Revellers and Local Talent Concert	Parish Church	Church Room
Tue 15 <sup>th</sup> 8-00	Village Society AGM	Village Society	Welfare Hall
Sat 19 <sup>th</sup> 10-00	Coffee Morning	Methodist Church	Chapel
Sat 26 <sup>th</sup> 10-00	Coffee Morning	Parish Church	Church Room
<b>MARCH</b>			
Sat 4 <sup>th</sup> 10-00	Coffee Morning	Methodist Church	Chapel
Wed 8 <sup>th</sup> 7-45	Sugar Craft Demonstration	Women's Institute	Welfare Hall
Sat 11 <sup>th</sup> 10-00	Gift Day & Coffee Morning	Parish Church	Church Room
Sat 11 <sup>th</sup> am ?	Church Tower Abseiling	Parish Church	Church TBC
Sat 11 <sup>th</sup> pm ?	Table Top Sale	Methodist Church	Chapel
Tue 21 <sup>st</sup> 8-00	Audio/Visual Show	Village Society	Welfare Hall
Sat 25 <sup>th</sup> 10-00	Coffee Morning	Parish Church	Church Room
Sat 25 <sup>th</sup> tba	Skittles Evening	Parish Church	Bulls Head
Sun 26 <sup>th</sup> 3-00	Church Restoration Event	Parish Church	T B A
<b>APRIL</b>			
Sat 1 <sup>st</sup> 10-00	Coffee Morning	Methodist Church	Chapel
Sat 8 <sup>th</sup> 10-00	Coffee Morning	Parish Church	Church Room
Wed 12 <sup>th</sup> 7-45	Talk/ Demo Reflexology	Women's Institute	Welfare Hall
Sat 15 <sup>th</sup> 10-00	Coffee Morning	Methodist Church	Chapel
Sat 15 <sup>th</sup> tba	Easter Tea – Invitation only	Senior Citizens Ass	Welfare Hall
Wed 26 <sup>th</sup> 7-30	Annual Parish Meeting incl Parking & Transport issues	Parish Council	Welfare Hall
Sat 29 <sup>th</sup> 10-00	Coffee Morning	Methodist Church	Chapel
<b>MAY</b>			
Wed 10 <sup>th</sup> 7-45	Resolutions - Quiz Game	Women's Institute	Welfare Hall
Sat 13 <sup>th</sup> 10-00	Coffee Morning	Methodist Church	Chapel
Sat 13 <sup>th</sup> tba	Barn Dance or Quiz	Parish Church	Church Room
Sat 13 <sup>th</sup> tba	Ratby Musik Fest	Ratby Band	Grobby Colle
Sun 14 <sup>th</sup> tba	Ratby Musik Fest	Ratby Band	Grobby Colle
Tue 16 <sup>th</sup> 8-00	Members Slide Evening	Village Society	Welfare Hall
Sat 20 <sup>th</sup> tba	Flower Festival	Methodist Church	Chapel
Sun 21 <sup>st</sup> tba	Flower Festival	Methodist Church	Chapel
Mon 22 <sup>nd</sup> tba	Flower Festival	Methodist Church	Chapel
Sat 27 <sup>th</sup> 10-00	Coffee Morning	Methodist Church	Chapel
Sat 27 <sup>th</sup> tba	Bury Camp Open Day	Parish Church	Boroughs
Sun 28 <sup>th</sup> tba	Bury Camp Open Day	Parish Church	Boroughs
TBA	School Summer Fete	School PSA	Primary Sch

DATE & TIME	EVENT	ORGANISERS	VENUE
<b>JUNE</b>			
Sat 10 <sup>th</sup> 10-00	Coffee Morning	Methodist Church	Chapel
Sat 10 <sup>th</sup> tba	Bury Camp Open Day	Parish Church	Boroughs
Sun 11 <sup>th</sup> tba	Bury Camp Open Day	Parish Church	Boroughs
Wed 14 <sup>th</sup> 7-45	Flower Arranging Demo	Women's Institute	Welfare Hall *
Tue 20 <sup>th</sup> 8-00	Hand Painted Glassware	Village Society	Welfare Hall *
Sat 24 <sup>th</sup> 10-00	Coffee Morning	Methodist Church	Chapel
Sun 25 <sup>th</sup> pm? TBA	Strawberry Teas etc Tea Dance	Parish Church	Church Rooms
<b>JULY</b>			
Sat 1 <sup>st</sup> 2-00	Church Garden Fete	Parish Church	Vicarage
Mon 7 <sup>th</sup> w/comm	Front Garden & Hanging Basket competition judging	Parish Council	Whole Village
Sun 16 <sup>th</sup> tba	Outdoor Visit TBA	Village Society	TBA
<b>AUGUST</b>			
Wed 9 <sup>th</sup> 7-45	Talk – Corn Dollies	Women's Institute	Welfare Hall *
Sat 12 <sup>th</sup> pm ?	Crow Pie Parade & Carnival with Children's Tea Party	Band & Other Groups	Village and Ferndale Park
Sun 13 <sup>th</sup> tba	Band Concert	Band & Church	T B A
Tue 15 <sup>th</sup> 8-00	New England in the Fall	Village Society	Welfare Hall *
<b>SEPTEMBER</b>			
Wed 13 <sup>th</sup> 7-45	Circle Dancing Demo	Women's Institute	Welfare Hall *
Tue 19 <sup>th</sup> 8-00	Work of the National Trust	Village Society	Welfare Hall *
Sat 10 <sup>th</sup> 7-45	Bury Camp		
<b>OCTOBER</b>			
Wed 11 <sup>th</sup> 7-45	AGM / Taste & Try	Women's Institute	Welfare Hall *
Tue 17 <sup>th</sup> 8-00	Talk – Northumbria	Village Society	Welfare Hall *
<b>NOVEMBER</b>			
Wed 8 <sup>th</sup> 7-45	Chocolate Making Demo	Women's Institute	Welfare Hall*
Tue 21 <sup>st</sup> 8-00	Village Quiz	Village Society	Welfare Hall *
TBA	Autumn Bazaar	Parish Church	Church Rooms
<b>DECEMBER</b>			
Sat 2 <sup>nd</sup> or 9 <sup>th</sup> tba	Christmas Bazaar	Methodist Church	Chapel
Wed 13 <sup>th</sup> 7-45	Christmas Dinner & Party	Women's Institute	Welfare Hall *

**NB \*** - The Welfare Hall is due to be refurbished this year as one of the Millennium Projects. It is therefore due to be out of use for quite some time, alternative venues will be announced as appropriate.

Further to our requests for information about events, we have only been able to list the dates which have been made known to us up to the time of going to press. Please let us know if your group has planned any events of which we are not yet aware. Telephone 0116 239 4472

## LETTERS to the EDITOR



Dear Editor,  
Hats off to the Brownies and their leaders who followed the Ratby Band on the Millennium Sunday Parade on January 2nd. But what happened to the other organisations, i.e. Cubs, Scouts? How wonderful it would have been to see these youngsters follow as well, thus recording a memory for the future history of Ratby.

**Congratulations** to everybody responsible for the organisation of the New Year's Eve Barn Dance, and to Richard Worsfold, choir, and all who helped to organise the Christingle, Candlelight and Millennium Sunday Services.

Wyn Baillie.

Dear Editor,

After the long winter we all feel the need to get away and have some fun. We've enjoyed **Carnival Time** on the Rhine in Germany in the past, and I thought there'd be others who'd enjoy it too. I've talked Bailiss Tours into running a trip, and there are still some seats left.

We set off from Ratby on Friday March 3rd, leaving Dover in the evening, arriving at Hotel Lang in Altenahr in time for breakfast. The hotel hosts a Masked Costume Ball on the Saturday evening, and this will get us off to a good start for three days of Carnival. On Monday we're off to Cologne Carnival, the World's biggest.

There's time on the way home on Wednesday for shopping in a Calais Hypermarket.

The cost of six days tour with Half Board is only £149 plus £15 insurance.

Come if you can, it'll be brilliant! Ring me on 2386510 if you want to know more, or book direct with Bailiss Tours on 01455 290253.

Phil Plant.

## RATBY NEIGHBOURHOOD WATCH

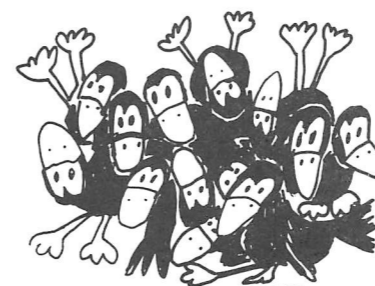
One of the several advantages of being in a Neighbourhood Watch Scheme is that in many instances Insurance Companies consider it worthy of a reduction in the cost of Home Contents Cover.

Scheme members are asked to be aware, for example, of any strange vehicle parked for lengthy periods near their home or people with no apparent purpose loitering in the village. If reluctant to call the police themselves they have the advantage of contacting their NW co-ordinator who will in many instances act for them.

We **do not** live in a crime ridden village, but what problems there are could undoubtedly be reduced by more Neighbourhood Watch coverage.

RING 2394450 to help if you are aware that your road is not in the scheme.

We understand that individuals are awaiting trial following the theft of items from local gardens before Christmas.



## THE BEGINNING

Up strode the sun, as if on cue,  
and rode across an azure realm  
clothing the winter trees with gold,  
the new Millennium to acclaim.  
A performance the planners could not plan  
(the midnight candles put to shame)  
for God's grace had bathed the countryside  
so radiantly withal.  
A chance to make the most of it-  
well, some of it at least;  
a companion would have made my day-  
on muddy, mulchy, squelchy tracks  
and boggy fields  
through Martinshaw to Tyburn Hill.

Whilst slogging onward  
time to contemplate my wishes for the world  
at large-  
justice, peace, no poverty,  
For kith and kin health, wealth and joy,  
my own impossible hopes best left unsaid.  
But whate'er befalls  
one thing's for sure  
this century I'm bound to meet my Maker.

HOZ

1st January 2000

(Hoz tells us that two of his poems have been accepted for publication in the Autumn edition of The Rutland Magazine. Congratulations! Editor.)



\*\*\*\*\*  
The theme for this years CROW PIE  
CARNIVAL will be  
**PEOPLES OF THE WORLD**

So start planning your costumes now!  
Let's make it the best Carnival ever in this  
special year.

\*\*\*\*\*

**QUALITY** LAMBSKINS  
AT THE BOWRON  
**RIGHT**  
**PRICE!**

**Penthouse Carpets Ltd.**

AXMINSTERS SCOTCHGARD  
TWISTPILE BERBERS  
SAXONY HUEGA TILES  
SCULPTURED CUSHIONFLOOR  
FLOTEX

GEORGIAN CARPETS  
ANTRON®  
STAINMASTER®  
CARPET CERTIFIED BY DU PONT

Thousands of Patterns  
to choose from  
£3.99-£45.50 sq.yd.

NEW!  
Scotchgard  
STAINRELEASE

Armstrong

NAIRN

**TREDFAIRE**  
**UNDERLAY**  
£2.50  
sq. yd.

**FREE FITTING**

**SHOP AT HOME SERVICE**  
**PORTER'S DISCOUNT CARPETS**  
121/3 STATION ROAD  
RATBY, LEICESTERSHIRE  
Tel: 2393238/2395202

**Pabari's Rathby News**  
5 Station Road, Ratby.  
Tel. 0116-2393287

For the Largest Selection in Rathby of  
Beers, Wines and Spirits.

A vast choice of Confectionary and Soft Drinks.

A Large variety of Greeting Cards, Wrapping Paper  
and Stationary.

Newspapers & Magazines.  
Delivered to your door daily.

We are the agents for  
SKETCHLEY DRY CLEANING.

Video Rental & Photocopying also available.

Opening Hours:  
Mon - Fri 6.15 am to 1 pm & 2.30 pm to 10 pm.  
Saturday 6.15 am to 10 pm.  
Sunday 7.30 am to 2 pm & 7 pm to 9 pm.

COME IN AND SEE FOR YOURSELF



## DANCING IN THE NEW MILLENNIUM

A festive group of villagers welcomed in the new century at the Ratby Scout Group's Barn Dance.

Photo by Wyn Baillie

\*\*\*\*\*

## RATBY CO-OPERATIVE BAND

The new Millennium offers new challenges to us all and the Band is taking the opportunity to partake. By the time you read this the New Year Concert to raise funds for the Church roof will have taken place, but not in the church as planned. It seems the Millennium Bug attacked the roof early, forcing a retreat to nearby Kirby Muxloe Free Church, whose great help was much appreciated.

The year ahead reveals a busy calendar of events and competitions for the different bands.

On Saturday February 5th our junior band are off to Salford at the invitation of the National Youth Championships of Great Britain, a highly prestigious event, and a great tribute to 'Smokey', their conductor and the dedicated team. We wish them well.

## Ratby Village Society

### FAREWELL 20th CENTURY

The Ratby Village Society was probably the first village organisation to stage an event connected with the Millennium when the November meeting took the form of a 'Farewell to the Twentieth Century' Social Evening combined with 25th Anniversary Celebrations. Members, many of whom appeared in dress 'other than normal', enjoyed an excellent meal enhanced by a splendid birthday cake kindly donated by Messrs Geary's. This was cut by founder member Dennis Green. A hearty sing-song followed, accompanied by guest pianist Derry Hurd.

(We're intrigued by this 'other than normal' dress; any photos? Ed.)



## SCOUTING 2000

So here we are in the year 2000. 93 years since Baden Powell held the first scout camp on Brownsea Island and only two weeks to go until our first camp of the millennium (although some would argue that's next year). On Friday the 14<sup>th</sup> of January we had a visit from Tony Kendall the counties caving adviser. He came along and showed us some slides and had a bit of a chat to alleviate any fears the scouts have about going caving. Which we are doing on the 18<sup>th</sup> of March.

The ball has started rolling on the hovercraft project. Many thanks to Mr Cawrey who has told us that we can build it in his shed on Ferndale Drive.

The group has also decided to relaunch their 100 club. Which will have a monthly payout of £40 and additional payouts of £50 & £70 in December. If you are interested in having a number for the annual cost of £12 then please call me on the number below.

The troops programme for the year is beginning to take shape with plenty of adventurous activities. we also hope to run weekly canoeing sessions in the summer and if there is enough interest a five day summer camp.

This only leaves me to invite anyone aged 10 to 15 who is interested to come along and join us. Phone me on 0116 239 0427.

Yours in scouting Rob Payne

### DEADLINE FOR APRIL ISSUE MARCH 24th 2000

Items for inclusion can be left in the Library or sent to 10 Groby Road or 3 Ingle Drive.

Editor 239 3367  
Adverts 239 3279  
Articles /Letters etc 239 4873

## RECIPE

### STICKY TOFFEE PUDDING

#### Ingredients

175grs/6oz dates, stoned and chopped  
300ml/10fl.oz/1/2 pint cold water  
1 teaspoon bicarbonate of soda  
50grs/2oz butter  
175grs/6oz caster sugar  
2 eggs (beaten)  
175 grs/6oz self raising flour  
1 teaspoon vanilla essence

#### sauce ingredients

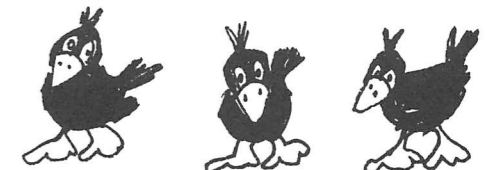
300ml/10fl oz /1/2 pint double cream  
50 gr/20z demerara sugar  
1 teaspoon black treacle

#### METHOD

1. Preheat oven 180 C/350F/ Gas 4
2. Butter and line with grease proof paper a Swiss roll tin
3. Boil dates in water for 5 minutes until soft, add bicarbonate of soda. Leave in water.
4. Cream together butter and sugar, then add eggs and beat well
5. Mix in dates and water, flour and essence
6. Pour into prepared tin
7. Bake for 35-40 minutes until firm to the touch.

To make the sauce place ingredients into a saucepan over very low heat and stir until well blended. Then bring to the boil. To serve cut the pudding into portions and ladle sauce over. Serve at once!

Scrivener



# SUPPORT LOCAL BUSINESSES

Enjoy a Warm and Safe HOME SERVICES

New Year!

**GAS APPLIANCE SERVICES**

- Appliance Servicing and Installation
- Breakdown and Repair Services
- Plumbing and Heating Installation
- Kitchen & Bathroom Design and Installation
- Quality Guaranteed by Experienced Engineers

**YOUR DOMESTIC GAS BOILER SERVICED**

6 SAXONS RISE, RATBY, LEICS. LE6 0NF  
**Tel: 0116 2393662**

**£25 + VAT**

**A. H. COLEY**

Plumbing & Heating Repairs,  
 New Installations, Bathrooms, Showers,

For a full range of services contact:

4, Saxons Rise  
 Ratby  
 Leicestershire LE6 0NF  
 Telephone: 0116-2394277

Enjoy a Night out ... PRIVATE HIRE

... Don't Drink and Drive!!

**TARGET PRIVATE HIRE**

Station Rd. RATBY Tel. 0116 239 2980

AIRPORTS  
 WEDDINGS  
 LOCAL and  
 LONG DISTANCE

6 Seater Available

Running Clean and Green on L.P.G.

**PIP'S** 0116 239 0909

PRIVATE HIRE

GROBY \* RATBY \* KIRBY

AIRPORTS \* LOCAL \* COASTAL

- B'HAM
- E.M.A.
- LUTON & HEATHROW

Give your Car a Treat.

LOCAL SERVICES

Spring Clean your Home

**THE SERVICE GARAGE**

MAIN STREET RATBY

**M.O.T. TESTS**

**CARS (PETROL - DIESEL)**

and  
**MOTORCYCLES**

M.O.T. HOURS 9.00 - 4.15 Monday to Friday  
 (Closed for lunch 1 - 2)

Telephone (0116) 2394966

**ALPINE CLEANING SERVICES**

OFFICES : CARPETS  
 THREE PIECE SUITES  
 VENETIAN BLINDS  
 BUILDERS CLEAN ETC

Geoff Wood

9 Ferndale Drive, Ratby. Leicester LE6 0LM  
 Tel: 0116 - 2388396 Mobile: 0860 267141

LEAVE YOUR CAR AT HOME WALK

# AND KEEP RATBY ALIVE

PERSONAL SERVICES

**BOBS BOUNCY CASTLES**

Wish everyone in  
 Ratby  
 a Fun-filled  
 Millennium

QUALIFIED VISITING CHIROPDIST  
 Peter S Comley MSSCh. MBChA



Markfield 01530 244887  
 24 Hour Ansaphone  
 Offers a Convenient & Professional Service  
 Registered Member of the  
 British Chiroprody Association

A New Look!

**JULIE'S**

HAIRDRESSING

MAIN STREET, RATBY

Traditional & Modern  
 Styling

Telephone: 2392406

**NEW YEAR  
 NEW YOU  
 NEW LOOK**

TREAT YOURSELF TO A  
 NEW PAIR OF  
 SPECTACLES

A LARGE SELECTION OF FRAMES  
 FROM BUDGET TO DESIGNER

LOOK YOUR BEST FOR  
 THE NEW MILLENNIUM!  
**CASTLE  
 OPTICIANS**

47 MAIN STREET, KIRBY MUXLOE  
 Tel. 0116 239 4288

Everything you need  
 for the new Millennium!

A new skill.

**RATBY PHARMACY**

58 MAIN STREET  
 LE6 0LL  
 Tel. (0116) 239 3139

DISPENSING, FAMILY HEALTH CARE  
 and ADVICE, PHOTOGRAPHIC DEV.

\*OPEN ; Mon.-Fri. 9am -1pm, 2pm-6pm\*  
 Saturdays 9am-12.30pm

COLLECTION of PRESCRIPTIONS from  
 L.F.E. and GLENFIELD SURGERIES

A Healthy New Year

DRIVING SCHOOL

**L** Free First Hour

**MELSWAY DRIVING SCHOOL**

Mel Shipley D.O.T. A.D.I. M.I.A.M.  
 All ages welcome...and nervous pupils  
 Learn to Drive with Melsway

Telephone 238 6149  
 3 Barton Close, Ratby.

DOWN TO THE VILLAGE AND KEEP FIT