



Wot! About Ratby



ISSUE 79

PUBLISHED BY THE RATBY SCOUT GROUP

DECEMBER 1999

THREE STEPS TO THE FUTURE

LADY MARTIN LAUNCHES THE CHURCH WEB SITE



Photograph by Alan Withers

On Tuesday 12th November Lady Andrew Martin visited St. Philip and St. James Church to launch the restoration campaign. Along with parish councillors and representatives of the local British Legion branch she viewed a special display about the dry rot which is threatening the church with closure and the long-term plans to improve facilities. She also officially launched the church computer website aimed at informing people far and wide about the campaign and the communities and churches of Ratby, Groby and Newtown Linford. (For those with access to the internet, the website address is <http://members.tripod.co.uk/bradgate>).

By this time campaign leaflets should have been delivered to every home in Ratby; if any readers are interested in finding out more but have not yet received a leaflet, then

Your local **EURONICS** AGENT
We'll Beat Any Nationally Advertised Price

THE BEST DEALS ON YOUR HIGH STREET!

PHILIPS Design Line
Widescreen TV & Video Package
32" Widescreen TV
• Superflat Blackline-S Picture Tube
• 100Hz Digital Scan
• Nicam Digital Sound
Model 32PW9544

Nicam VCR
• 6 Head Long Play
• Nicam Video
• Videoplus & PDC
• Plug & Play
Model VR805

Package Price £1899.99

EURONICS EXCLUSIVE
PHILIPS
14" Portable TV
• Remote Control • Teletext
only **£99.99**

PHILIPS
20" Combi TV
• Teletext
• Videoplus
• Autostore/PDC
• 2 Tuners
Model 20PV184
£299.99

PHILIPS
24" Widescreen TV
• Nicam Stereo Sound
• Superflat Blackline-D Picture Tube
• Fastext
• 16 Watts RMS
• Supplied with Matching Stand
Model 24PW6324C

PHILIPS Plus
Nicam Video
• 6 Head Long Play
• Digital Studio Picture Control
• Plug and Play
• Videoplus & PDC
Model VR600

Package Price £629.99

PHILIPS
Mini Hi-Fi
• 2 x 25 Watts RMS
• 3 CD Changer
• 2-Way Bass Reflex
• 3 Band Digital Tuner
Model FW396C
£159.99

PYE
Nicam VCR
• Videoplus & PDC
• Automatic Head Cleaner
• Auto Install
Model DV605
£149.99

PHILIPS
'Crystal Clear' Nicam VCR
• Videoplus & PDC
• Plug & Play • Turbo Drive
• Easy Link Home Cinema
Model VR860
£279.99

RTV
23-27 Station Road, Ratby,
Leicestershire LE6 0JQ
Tel: Leicester (0116) 2394544

Get a **FREE OnDigital** set top box*

EURONICS AGENTS
Make your money go further!

- Low Prices
- Top Brands
- Special Offers
- Local Delivery
- Guaranteed After Sales Service
- Helpful Staff
- Expert Advice

*Euronics Agents will beat any price for these products that have been advertised in the National Press in the UK up to week ending 7/11/99. All items are available at participating stores only. All offers end 20/11/99. Limited Offers - While Stocks Last. Illustrations are representations only. E&OE.

RTV wishes all our customers a Merry Christmas & a Happy New Year



Letters to the Editor

A.J. Briggs
164 Markfield Road
Ratby
239 2518

Dear Sir

I would be grateful if you could place an appeal for help in the paper. The information I require is in two parts:

1 A photograph of the Ratby Home Guard. I know that one was taken and would very much care for a copy, as my grandfather was amongst its ranks. Additionally, any other information regarding Ratby Home Guard would be very gratefully received.

2 Information relating to Ratby men who fought in the Great War. A list of those who gave their lives is easily found on the

war memorial, however, those who were fortunate to survive are now fading into the past and they deserve better. Therefore information is sought regarding all Ratby men who 'did their bit' for King and country. Photographs would be particularly interesting to accompany any information regarding their service details.

Any costs that may be incurred for reproductions would be paid for by myself.

I look forward to your assistance,

Yours faithfully

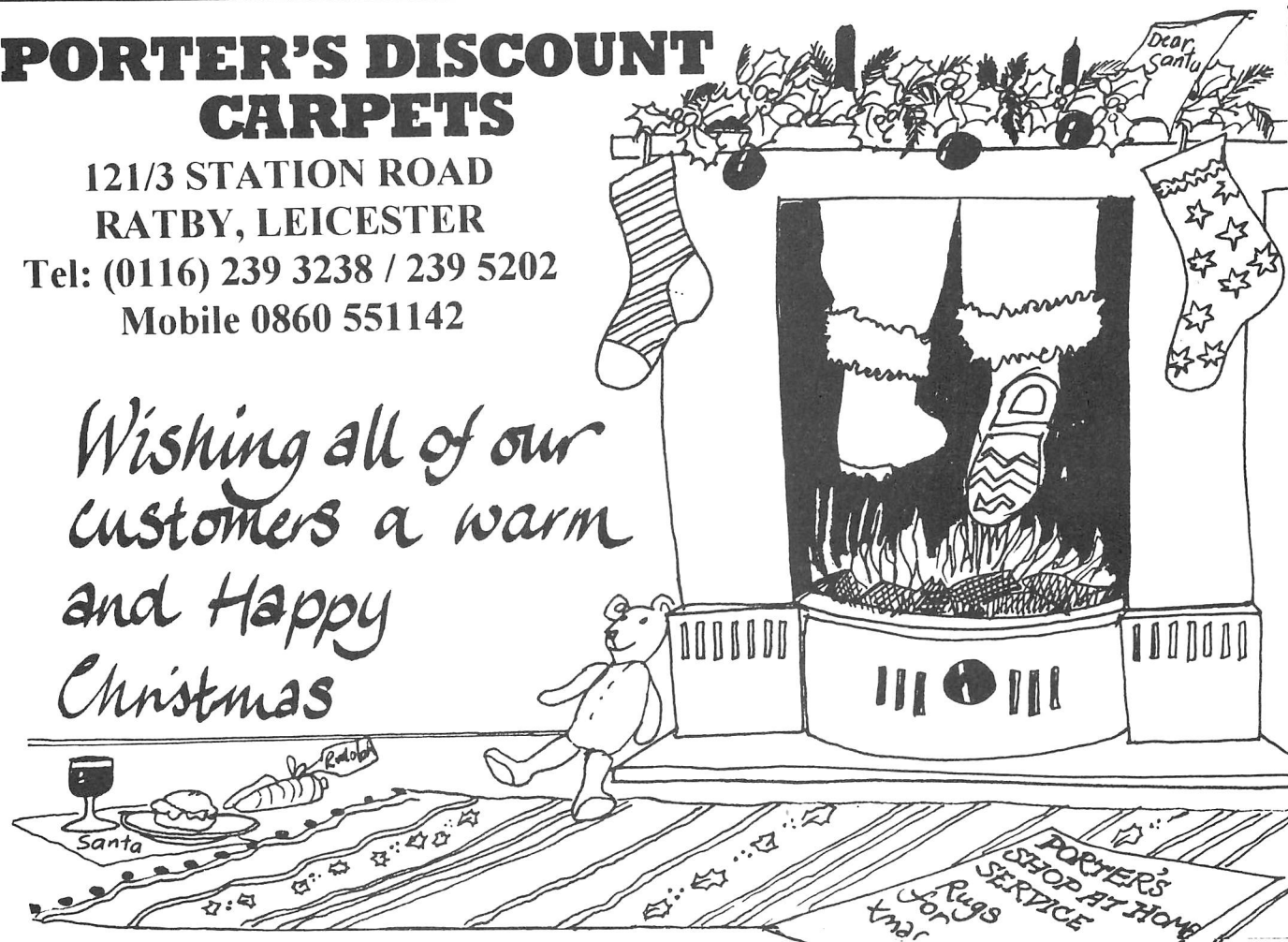
A.J. Briggs



PORTER'S DISCOUNT CARPETS

121/3 STATION ROAD
RATBY, LEICESTER
Tel: (0116) 239 3238 / 239 5202
Mobile 0860 551142

*Wishing all of our
customers a warm
and Happy
Christmas*



Ratby Parish Council
Tel. 239 0167



RATBY PARISH COUNCIL WISHES RATBY RESIDENTS A VERY HAPPY CHRISTMAS AND A PROSPEROUS MILLENNIUM

Don't forget to come and join in with the annual **Christmas Carol Service** around the Tree on **Wednesday December 22nd at 7.30 pm.**

RATBY APPLE DAY

The Community Orchard Group organised a fruitful event at the Orchard site on October 31st. Villagers enjoyed discovering the apple varieties in the orchard with the help of an ingenious quiz. There was a fun word search for the children.

A wide variety of apples were displayed with an invitation to taste, and home-made apple pies made with more unusual apples tempted us to sample the different flavours.

Paul Hand had travelled from Shropshire to demonstrate traditional skills with intriguing apple-coring machines. The spiralling apple rings were roasted with delicious results on the barbecue. Peels and cores were pressed with whole apples to produce a scrumptious fresh juice.



Paul Hand demonstrated apple coring and pressing to villagers who came along to the Hallowe'en Community Orchard event.

Photo by Jean Mirza

VILLAGE MILLENNIUM UPDATE

We now have more news of events dates to take us into the first two months of year 2000, these are as follows.

Village Society talk on Bruges
January 18th -Welfare Hall - 8.00pm
Evergreens Millennium Party
February 12th -Welfare Hall-3.30pm

These are in addition to the dates listed in the last WOT We hope to produce a full diary of the rest of Ratby's Year 2000 activities and events in the February edition.

Try not to miss the Church Service and Band Parade on Sunday January 2nd. The Parade will start at 1.45 pm from close to the woods entrance on Markfield Road. There are expected to be around 130 band musicians on parade in what is to be the largest band parade in any village in the country over this first weekend of the year.

The Joint Church Service then follows at 3.00 pm
 How about a full turn out for this celebration ?

The Millennium Steering Group are all very grateful to Cawrey and Sons Ltd and Fraser's Stores who have both responded with donations following the funding appeal. Thanks very much to all concerned. We also thank Geary's Bakers for their kind promise to donate all of the bread and cakes at the tea party for all of the children from Ratby School which is to be held at Crow Pie 2000 Carnival on 12th August.

WORLD PREMIERE

Ratby Co-operative Band have commissioned their Musical Director, Geoff Newman to compose a Millennium March specially for the celebrations.

**BEST WISHES FOR
 CHRISTMAS**
A HAPPY NEW YEAR from MEL
to all past present & future clients.
MELSWAY
DRIVING SCHOOL

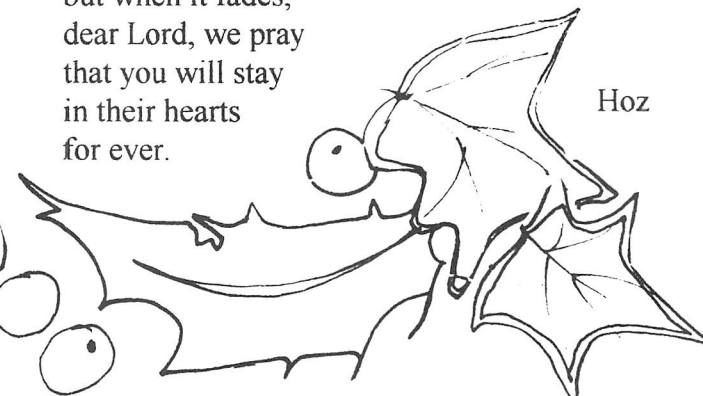
Mel Shipley D.O.T., A.D.I., M.I.A.M.
 Tel Leicester 2386149



NO CRIB FOR A BED

Christingle, Carols by Candlelight,
 Midnight Mass.....
 Services we've come to love
 at the season of the year
 when remembering the birth of Christ.
 The Christ who brought, for all,
 light in the darkness of sin and grief
 ever caused by heedless man.
 A light which those of Faith perpetuate
 with candles kindled by the score,
 the Christmas church to decorate
 and celebrate.
 And what more wondrous
 than the Blessing of the Crib
 on Christmas Eve at six o'clock
 when parents with their bright eyed child,
 or children, come to sing
 of angels, shepherds, stars and sheep -----
 then placing figures on the table
 around the poor and lowly stable.
 The tiny tots with eyes aglow
 reflect the flickering candle's light
 and as they go out into the night
 turn thoughts to Santa and his sleigh,
 with reindeer, flying through the sky.
 Such innocence is touching to behold
 but when it fades,
 dear Lord, we pray
 that you will stay
 in their hearts
 for ever.

Hoz



**ALPINE
 CLEANING
 SERVICES**
 OFFICES : CARPETS
 THREE PIECE SUITES
 VENETIAN BLINDS
 BUILDERS CLEAN ETC

Geoff Wood

9 Ferndale Drive, Ratby, Leicester LE6 0LM
 Tel: 0116 - 2388396 Mobile: 0860 267141

RATBY NEIGHBOURHOOD WATCH

'POST CODE IT' COMPETITION RESULTS

The high quality of entries from pupils of Ratby School made judging difficult. Finally, at a presentation on November 19th, Claire Lapworth, Ciara Foley, Jodie Smith and Jessica Hellicar each received their much deserved prize of a book token and special winner's certificate. All entrants received a certificate to acknowledge their efforts. The winning pictures are on display in Ratby Library.



Photograph by Barbara France

MILLENNIUM WATCH

This is a special version of Neighbourhood Watch which aims to offer advice for the long holiday.

What might happen?

Whilst most people will be busy enjoying themselves there will always be a small criminal minority who want to use the situation to their own advantage. Burglars can expect a good haul of presents to steal
Who is most at risk?

People who are away from home, leaving their property without adequate protection. The elderly, vulnerable, and those without friends or family nearby to call for help if they get into difficulties.

What you can do?

Make sure your household has good security measures. Arrange to keep an eye on neighbours property if they are away. Take in their post, open curtains, switch on lights, and hold alarm keys for them. Identify vulnerable people and watch out for them.

BE A GOOD NEIGHBOUR!



HAVE YOU LOST SOME SPECTACLES?

A pair of glasses in a brown leather case are still looking for their owner in the Library.

They were found some time ago outside the building.

Sponsored by **Gas Appliance
 Services - Leicester**

6 Saxons Rise, Ratby, Leicester LE6 0NF.
 Tel: Office 0116-2393662



**A
Very
Merry
Xmas
And
Happy
New
Year
To
All
Our
Patrons**

**With Love
From**

**Ratby
Post
Office**



ALTERNATIVE CHRISTMAS PUDDING

Ingredients

- 1 pint packet lemon jelly
- 1 oz ready to eat dried apricots
- 1 oz ready to eat dried prunes
- 2 oz multi- coloured glace cherries
- 1 oz raisins
- 2 tablespoons rum or brandy
- $\frac{1}{2}$ pint double cream
- 1 oz (approx.) meringue pieces

Method

- 1 Chop apricots, prunes and cherries and add to raisins and rum in a basin. Soak for 2 hours
- 2 Make up jelly with $\frac{1}{2}$ pint boiling water, and cool
- 3 When jelly is starting to set, gently fold in fruit and rum and crushed meringues.
- 4 Lightly whip cream into soft peaks
- 5 Carefully fold cream into fruit jelly
- 6 Pour into wetted mould, cover lightly with foil and leave to set until firm.
- 7 To serve; invert on to a large plate and decorate with holly leaves made from green marzipan.
- 8 Serve immediately.

Scrivener



Photograph by Alan Withers

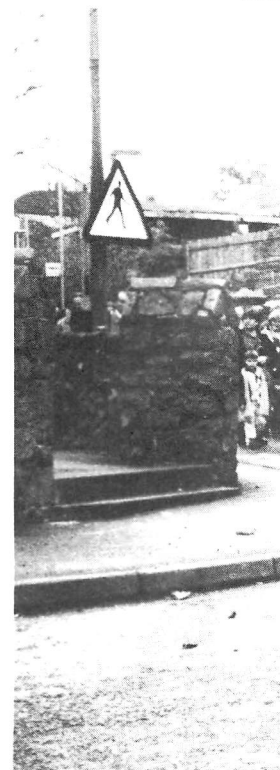
RATBY AND DISTRICT BRITISH

I would like to thank everyone who attended the Armistice Day Remembrance Service in the church at Ratby on 14th November 1999. Special thanks to our vicar, Richard Worsfield, for a sermon which I am sure meant as much to the youngsters present as it did to the veterans. Thanks also to Mavis Rae and Josie Johnson for the poppy flower arrangements, the Band for their excellent performance and to the young Brownie who read the confidence. The Police mention for directing

It was the Standard Bearer's last duty before he relinquished his post due to ill health, and my thanks go to him for the parade decreases in number slowly as the years pass by, but the congregation at the Church swells each time, and I am sure there were more people at the Memorial than ever before.

Last year the Branch raised £6,300 for the Poppy Appeal, and we hope to do as well this year.

A merry Christmas and a healthy New Year from all the Branch Officers and Members.
Roy H
Chairman



STRICT ROYAL LEGION

everyone who attended the Remembrance Service in the church at Ratby on 14th November 1999. Special thanks to our vicar, Richard Worsfield, for a sermon which I am sure meant as much to the youngsters present as it did to the veterans. Thanks also to Mavis Rae and Josie Johnson for the poppy flower arrangements, the Band for their excellent performance and to the young Brownie who read the confidence. The Police mention for directing

It was the Standard Bearer's last duty before he relinquished his post due to ill health, and my thanks go to him for the parade decreases in number slowly as the years pass by, but the congregation at the Church swells each time, and I am sure there were more people at the Memorial than ever before.

Last year the Branch raised £6,300 for the Poppy Appeal, and we hope to do as well this year.

A merry Christmas and a healthy New Year from all the Branch Officers and Members.
Roy H
Chairman



New Scout Leader !

Hi my name is Rob Payne and from Christmas I will be the leader at the 1st Ratby scouts. Dennis Brookes the current leader has decided that after over 10 years service it is time for a well earned rest.

I would like to take this opportunity to thank Dennis for those years service as he taught me quite a lot when I was a scout.

I've been with the group now since February and we've been quite busy on a range of activities. Climbing, abseiling, shooting and a weekly canoeing session was held over the summer at the outdoor pursuits centre. Thanks to our canoe instructor David Payne (yes he's my brother). We've been on two camps. One at Willesley near Ashby and the Autumn camp which was held at Oaks in Charnwood in October. As with all my visits there it rained. Although it didn't seem to deter the scouts who went hiking, cooked all their meals on open fires and played wide games in the woods at night. We even managed to have a session on the archery range under the supervision of the campsites instructors. Our helper Paul Clarke managed to hit five bullseyes on his first ever try with a bow. The instructor had never seen this in four years of instructing. Well done Paul. This year also saw a return of girls to the troop. We now have three who attend on a regular basis. As a treat for those scouts who deliver your Ratby report we took them to Alton Towers for the fireworks spectacular a good day was had by all.

The year 2000 lies ahead. I am already making inquiries for the programme, which hopefully will include, by the request of some of the scouts scuba diving, pot holing and a project to build a hovercraft. So if you are aged between 10 and 15 and are interested in joining then call me on 0116 2390427. I hope you all have a merry Christmas and a very prosperous new year. Thank you for your continuing support.

Rob Payne

A Floodlit Church for a New Millennium

A scheme has been passed which will enable St. Philip and St. James Church to be floodlit in time for the new millennium. The scheme has the full support and co-operation of the Parish Council and has been made possible thanks to generous grants from the Church Floodlighting Trust, Hinckley and Bosworth Borough Council, a dedicated legacy and a donation from Cawry Limited. Without this support the floodlighting scheme could never have gone ahead, given that the church is having to direct all its resources towards its dry rot repairs.

It is hoped that the scheme will not only enhance the nighttime appearance of the building but also assist in lighting the churchyard footpaths and assist with security in the churchyard.

If installation work goes according to plan, the lights should be switched on for millennium eve itself.



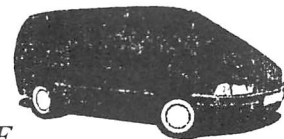
**DEADLINE for the FIRST ISSUE
of the year 2000
FRIDAY JANUARY 14th**

**1st RATBY SCOUT GROUP
MILLENNIUM EVE
BARN DANCE PARTY
FRIDAY DECEMBER 31ST 1999
IN RATBY CHURCH ROOMS
£6.50 INCLUDING SUPPER
phone 239 4472 for tickets**

TARGET

**PRIVATE HIRE
Station Rd. RATBY
0116 239 2980**

**AIRPORTS
WEDDINGS
LOCAL and
LONG DISTANCE**



**6 Seater Available
Running Clean and Green on L.P.G.**

Ratby Village Society

'AFTER THE GREAT ICE AGE'

It may have been a mild evening outdoors, but in the Welfare Hall for the September Meeting, it was indeed 'The Great Ice Age'. The slides which accompanied Dr. Helen Boynton's fascinating talk were of landscapes which had been formed when the ice covering Europe and North America were in retreat. A tilt in the Earth's axis caused Arctic conditions to move southwards almost as far as the Thames, 10,000 years BC. As the process reversed, and temperatures rose over a period of several thousand years, glaciers, like rivers of solid ice, moved inexorably onward, scouring the terrain beneath, taking rocks and boulders in their path. Enormous chunks of Mountsorrel granite have come to rest many miles further south. The melting ice caused the seas to rise and then flood a deep valley, to form The English Channel.

No-one can predict whether another ice age will occur in the future, (Those who remember the winter of 1947 thought one had arrived then!) or whether Global Warming will cause the ice caps to retreat further and seas rise to flood more land.

As these natural phenomena take thousands of years to evolve, none of us need to worry about waking up to find Ratby-on-Sea. Even so, there is something of the Ice Age remaining in the Northern Hemisphere. Between Shetland and Iceland, thousands of fathoms below the Arctic Ocean, is a huge depression in the sea bed filled with icebergs, not to mention giant marine spiders!

TROPICAL HEAT

The role was reversed at the October meeting when the tropical heat portrayed on the screen was an antidote to the bitter wind outside. Holiday visits to Penang in Malaysia, and to Singapore was the theme of Mr Roy Thomas's slide show. Modern

buildings towered above traditional dwellings, and ancient temples, one of which is home to hundreds of venomous snakes! The population of Penang is 60% Chinese, whose rickshaws have been replaced by cycle powered equivalents. One operator pedalled Mr and Mrs Thomas around for two hours in the midday heat, taking them to a village built on stilts above the water. Many young children drown here because there are no fences along the board walks.

One of the pleasures was the proliferation of orchids, which seemed to thrive like weeds, and which, when purchased survived the journey back to Glenfield where they lasted for three months.

Singapore, one of the world's busiest ports, fell to the Japanese in 1942. 24,000 British soldiers and airmen are buried in a well-tended cemetery. A waxworks exhibition depicts the surrender of the British commanders in the building where three years later the Japanese were to sign their surrender documents.

In this part of the world broad daylight turns to night seemingly in a few minutes, but during this time there are breathtaking, spectacular sunsets which cannot anywhere be surpassed.

The first meeting of the new millennium will be on January 18th when Hoz will enthuse over the magic of Bruges.

Pabart's Ratby News
5 Station Road, Ratby.
Tel. 0116-2393287

For the Largest Selection in Ratby of
Beers, Wines and Spirits.

A vast choice of Confectionery and Soft Drinks.

A Large variety of Greeting Cards, Wrapping Paper
and Stationery.

Newspapers & Magazines,
Delivered to your door daily.

We are the agents for
SKETCHLEY DRY CLEANING.

Video Rental & Photocopying also available.

Opening Hours:
Mon - Fri 6.15 am to 1 pm & 2.30 pm to 10 pm.
Saturday 6.15 am to 10 pm.
Sunday 7.30 am to 2 pm & 7 pm to 9 pm.

COME IN AND SEE FOR YOURSELF

**GAS
APPLIANCE
SERVICES**

- Appliance Servicing and Installation
- Breakdown and Repair Services
- Plumbing and Heating Installation
- Kitchen & Bathroom Design and Installation
- Quality Guaranteed by Experienced Engineers



**YOUR DOMESTIC GAS
BOILER SERVICED**

6 SAXONS RISE, RATBY, LEICS. LE6 0NF
■ Tel: 0116 2393662



A. H. COLEY
Plumbing & Heating Repairs,
New Installations, Bathrooms, Showers,

For a full range of services contact:

4, Saxons Rise
Ratby

Leicestershire LE6 0NF
Telephone: 0116-2394277

Wot! into the MILLENNIUM

During 1999 the level of advertising in WOT ABOUT RATBY has gradually decreased. This has meant that the number of pages has had to be reduced, making it difficult sometimes to fit in all the copy we receive.

At a recent meeting of the Editorial group we decided that action was needed to ensure fairness to all contributors.

Until such time as the level of advertising increases again, or we manage to find sponsorship, we will need to restrict the number of pages to 8.

We very much want articles and photographs from non-profit making groups in the village, and we hope our new policy will encourage contributions from a greater variety than has recently been the case.

For the immediate future then, we will follow the rules as outlined;

1 Letters, recipes, poems, stories, articles and photographs of general interest from individuals will be included free of charge as at present.

2 Articles from non-profit making groups in the village will be accepted free of charge up to ¼ page. After this we will charge for more space at the current article rate.

3 Articles from other bodies are welcome, but may be subject to a charge.

4 We will do our utmost to include all copy received by the deadline date, but we reserve the right to edit when necessary.

Please note, if you wish to word-process your own articles, which we very much welcome, as we are hard-pressed volunteers, please follow the guidelines below:

Times New Roman, font size 12 is the minimum acceptable for ease of reading.

Column width 9cm, justified on the left only, again for reading ease by people who have difficulty.

If you would like to advertise in the magazine, or sponsor articles, please phone 239 3279

Thank you
The Editor

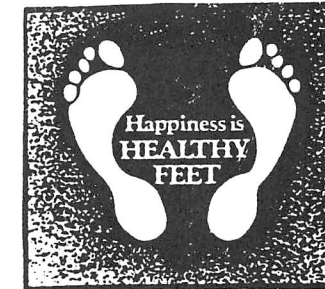
A MERRY CHRISTMAS
TO ALL WOT! READERS
FROM RATBY SCOUT GROUP

THE SERVICE GARAGE
MAIN STREET RATBY
M.O.T. TESTS
CARS (PETROL - DIESEL)
and
MOTORCYCLES
M.O.T. HOURS 9.00 - 4.15 Monday to Friday
(Closed for lunch 1 - 2)
Telephone (0116) 2394966

JULIE'S
HAIRDRESSING
MAIN STREET, RATBY
Traditional & Modern
Styling
Telephone: 2392406

QUALIFIED VISITING CHIROPODIST

Peter S Comley MSSCh. MBChA



Markfield 01530 244887
24 Hour Ansaphone

Offers a Convenient & Professional Service
Registered Member of the
British Chiropody Association

PIP'S 0116 239 0909
PRIVATE HIRE
GROBY * RATBY * KIRBY
AIRPORTS * LOCAL * COASTAL
• B'HAM
• LUTON
• E.M.A.
• H'ROW
• PLUS CAR PARKS

1st RATBY SCOUT GROUP MILLENNIUM EVE BARN DANCE PARTY

AT RATBY CHURCH ROOMS
FRIDAY DECEMBER 31st

£ 6.50
including supper
Admission by advance tickets only
Phone 2394472

A THANK YOU FROM RATBY METHODIST CHURCH

The church has recently been informed that the late Mr Bradley Moore, the oldest of its members, has left a substantial amount to the church under the terms of his Will. We are fortunate that it is sufficient to pay all the remaining bills relating to the re-development and to repay all loans received.

Bradley was born in Ratby and was involved in our church in various ways from an early age. He died in Markfield Court Nursing Home to where he moved in 1992.

We are also indebted to many other people, some unknown to us, who have played their part in the fund raising over the past few years. We are grateful to all who contributed to and supported the Development Fund with their prayers, with gifts of money, of time unstintingly given in innumerable ways, of ingenuity and talent, for loans of money, equipment and property. If you have been involved in any of these ways, please treat this as a personal thank you.

We thank God for His blessings and pray that our new church will help inspire our faith to bring His love to the people of our village and community.

CASTLE OPTICIANS

Having to travel to Leicester
and park for just an
eye examination?
NOT ANY MORE!



Having to drag the children into
town after school?
NOT ANY MORE!

Budget to designer frames
to suit all price ranges

GENUINE VALUE FOR MONEY

PLEASE FEEL FREE TO BROWSE

MAIN STREET KIRBY MUXLOE
0116 2394288