

Wot!

About Ratby

DECEMBER 1986

Published by Ratby Scout Group

ISSUE 1

WELCOME TO WOT

What about "WOT" - well a dictionary definition found in the new Ratby Library shows that it means to know or to be aware of but it also has a connection with wit. The style of this magazine will be to bring both awareness and wit to the forefront.

WOT follows the lead of the previously excellent RATBY RECORD and RATBY FERRETT. The latter being a Scouts newsletter. WOT is produced by the Ratby Scouts Association and any profit will be for its funds to help the advancement of Beavers, Cubs and Scouts.

The intention and hope is that all the village will be involved in the content of the magazine. Why? - because as Ratby is a village with a history and tradition second to none with considerable activity taking place, we feel that you will want the organisations to inform you of their activities. There will become an increasing indication of the views, happenings and interests of all the people in the village.

This will be the first of many editions but we will need your support for articles, information and response. Let us know that you are reading the magazine. Tell us what you think of its contents and quality. Please feed us with ideas.



Akela Gwen Holloway hands over a cheque to Diana MacMulland (development officer) of the Woodland Trust to help towards the purchase price of the Martinshaw Wood in 1985. The money represents part of the proceeds of a sponsored walk carried out in May by Scouts, Guides, Brownies, Cubs and Beavers.

Ratby Primary School Association
would like to wish the 1st
Ratby Scout Group every
success with their new
venture

May we also thank
everyone who has helped
us in our fund-raising
events over the past year,
and wish them all a very
Happy Christmas



PARISH NEWSLETTER DOCTOR'S SURGERY

The Parish Council has received official notification that Hinckley and Bosworth Borough Council has granted planning permission to Dr. Purvez for the conversion of the premises of 122 Station Road, Ratby into a doctor's surgery as from 1st December 1986.

TREE PLANTING

Mrs D. Smalley reported that 130,000 trees were planted in the County last year and that a similar number is proposed for this year. In spite of this effort the Midlands is still considered to have one of the poorest records of tree planting in the country. Ratby, in its modest way, has helped to remedy this situation by its own tree planting programme.

NEWSLETTER

The Parish Council has agreed to publish its newsletter in the new village newsletter to be organised by the Scouts. This will be for a trial period of 2 editions and then the situation will be reviewed. The proposed newsletter will be issued every two months.

WAR MEMORIAL

Arrangements have been made for the War Memorial to be cleaned and for the marble chippings to be replaced.

BUS SERVICES

Members of the public who use the buses will probably have encountered several problems since the deregulation of the buses took place on 26th October. If there are any specific complaints will they please contact either Mr M. Ball 395654 or Mr. A. Love 150, Station Road who will collate these grievances and send them to County Hall. The Council is aware of the inconvenience caused by the deletion of the Circular Buses 163/173 and has made every effort to persuade the County Council to reinstate this service.

FORTHCOMING EVENTS

Wednesday 17th December - Carol Singing at the Christmas Tree.

The FERN
School of Motoring

TED SIMMS

D.O.T. Approved Driving Instructor., M.I.A.M.
Motorway — Advanced Tuition

GRADE 1
GOLD HOLDER
ROSPA ADVANCED DRIVER

FERN CRESCENT
GROBY, LEICESTER
TELEPHONE 870962

ASTILL & JORDAN LTD
The Garage, Station Rd.
Ratby

Bus and Coach Hire
for All Occasions!

Phone 393118

MICHAEL & CO SOLICITORS
Real Estate Section
THE COMPLETE PACKAGE
★ Estate Agency service
★ Conveyancing
★ Arrange mortgage
★ Arrange insurance
★ Free initial advice and quotation
Inclusive fee for selling your house and dealing with your conveyancing.
Everything you need under one roof
Written quotations provided on request.

STERLING HOUSE, 2 DE MONTFORT STREET
LEICESTER LE1 7GA
Open 6 days a week Monday-Saturday
9 a.m. to 5.30 p.m.

Tel. Leic. 549254

or locally 5 CARDINAL CLOSE RATBY
Telephone 387017

GROUP PURCHASE

BLUE PETER SIGHT SAVER SALE

ON 29/11/86 in the Welfare Hall

Organised by the Beavers and Cubs

RAISED £130 +.

RATBY POST OFFICE

Main Street, Ratby

Newsagent . Confectionery.
Tobacco.

Greetings Cards

Hallmark, Rustcraft etc.

Tel. 393001.



JULIE'S
HAIRDRESSING
Main St,
RATBY.
Traditional & Modern
Styling
Tel: 392406



ALLIANCE LEICESTER

RATBY AGENCY

We are always willing to help you invest your money be it £1.00 or £250,000. We can also make out cheques to pay your bills up to £2,500 or draw out £250 cash on demand. The same as branches in town. Save your petrol and pop in to us.

Open 9 a.m. till 5.30

9 a.m. till 12.30 (Sat.)

12.30 till 1.30 (lunch)

Tel: 393574

FLORENCES SECOND HAND 34 MAIN ST. RATBY

May I sell your unwanted items for you, glassware, pottery, ornaments and small household goods, etc.

Put on your own price I take 20% commission (£1 in £5).

Items must be small, any amount and in good condition, one plate to a complete dinner service. I will also buy if necessary.

Wanted old china cabinet for display.

Tel: 393574 I will call if you wish.

Florence.

CUBS (SWIFTS)

On August 7th, I became Akela of the original pack with Paul, while Gwen and Robin went to run the new pack at the Chapel Rooms.

I am pleased to say that we have had seven new cubs join our pack since then, and the investiture was held at Cossington St. baths, a lot of our new cubs took part and all did very well, especially as for many it was their first competitive swim. One boy kindly agreed to swim for us after recently leaving to join the Scout Troop at Anstey.

We took part in the District Cross Country at Groby Scout H.Q. on October 18th, also the Chess Competition in November. Sheena Wallbank (Akela)

CUBS (SWALLOWS)

Robin, Ian and myself are thrilled to have 19 cubs in our new pack which opened on August 7th. We had the Investiture on 2nd October and our Assistant District Commissioner came to help. We were very proud of the boys, they all knew their Law and Promise. Also the response from the parents was great too. I hope this will always be the same. It gives the boys so much encouragement when Mum and Dad come along and can be seen to be actively involved.

They seem very enthusiastic to learn, so now we can really 'get cracking' on the Arrow work. Also if they want to do badgework, PLEASE LET US KNOW FIRST.

We had a great time at the Swimming Gala and were again very proud of the boys, they really tried hard.

I, with my other leaders, wish you all a Good Christmas and Happy New Year!

Gwen (Akela)

0000000

beavers.

The First Ratby Beavers are part of the Scout Group. Our motto is "Fun and Friends". We cater for 6 to 8 year old boys. We meet every Wednesday in term time from 5.30 to 6.45p.m. in the school hall. The Beavers nationally celebrated their fourth anniversary last month and now have 76 colonies in the county. It is currently the fastest growing youth movement in the country!

For more details please contact either R.Bent, 3 Ingle Drive (394873) or J.Harrison, 20 Groby Road (393871).

THE RATBY BAND

The Band have been busy preparing for two competitions which took place during November at Leamington Spa and in the De Montfort Hall, Leicester.

The concert by the Band in Kirby Muxloe on Friday 5th December was in aid of the Peter Le Marchant Trust which is a charity the Band regularly supports to enable disabled people to take outings on the grand union canal in purpose built narrow boats.

The usual busy programme is being arranged for the Christmas period, and we will be playing at over 60 venues from Saturday 6th December when we played in the Beaumont Leys Shopping Centre to Boxing Day when the Band will, as it has done for many years, tour the village playing carols.

As part of the Christmas programme the Junior Band will once again be organising their Christmas Concert at Groby College on Sunday 14th December. This is always a very popular event and sure to attract the usual large audience. If you have not been to a Band concert before then this is an ideal introduction. Tickets Tel: 873161.

Many of the events during the Christmas 'Season' are in aid of charities but a number are organised where the proceeds go into the Band funds. This year we are hoping for a record year as all the money raised will be going into the Building Fund for our new Bandroom which we are going to build on a plot of land off Station Road. We are going to need approximately £30,000 and at the moment we have raised £8,000 which although is very good still leaves us a long way short of the target.

The Band have a cassette of popular light music available and can be purchased from Band Members at a cost of £2.50.

If you require any information concerning the Band or would like to purchase a cassette please contact the Band Secretary, Mr. Phil Plant on 386510.

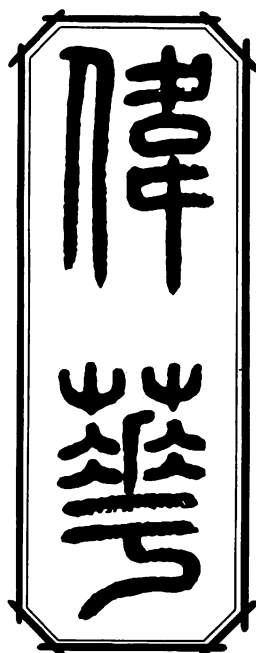
RATBY JUNIOR BAND

The Junior Band have been kept fairly busy since June playing at Church, School, Scouts or Charity events. Their Birthday Concert in June was played to a "full house" and it is hoped that this will be repeated at their Christmas Concert

on the 14th December at Groby Community College. At various times during the year, the Band play in the St. Martin's Bandstand in Leicester -

a somewhat chilly engagement in December though - and there is a lot of carol playing to be done in December at several venues in county and city. On the social side, a Disco was held in August and in January, the "Juniors" and "Beginners" will be going to see the Markfield Plays' pantomime "Peter Pan".

J.T.LEE
32 Main St. Ratby
QUALIFIED WATCHMAKER
and JEWELLER
Tel. 395244



GREAT CHINA
TAKEAWAY

36 Main Street, Ratby, Leicester
 Tel: (0533) 394666

Telephone orders are welcome

Business hours
 Monday:
 Closed (except bank holidays)

Tuesday to Thursday:
 12 noon - 1.45 p.m.
 6 p.m. - 11 p.m.

Friday and Saturday:
 12 noon - 1.45 p.m.
 6 p.m. - 12 midnight

Sundays and Bank Holidays:
 6 p.m. - 11 p.m.

Ample Parking Facilities

THE LIFE AND TIMES OF A RATBY VILLAGER STOCKINGNER IN THE EARLY 19TH CENTURY

The village of Ratby on the eve of the 19th century was essentially an Agricultural community. However the "Enclosure movement" which had lead to the break up of the "open field" system of farming had brought hardship to many villagers who found their land had been taken away from them following enclosure of the open fields in 1773. By 1800 there was some 80 households in the village which amounted to a population of some 480 people. Shortly before the enclosure we have documented references to the activities of cottage industry within the village. The knitting frame invented by William Lee, a Nottinghamshire clergyman had by the late 17th century replaced the weaving loom in many households in Leicester and Leicestershire. By 1700 Hosiery centres were established in Leicester, Hinckley and Loughborough, with many town hosiers and employers in country districts putting out work to the villagers. A charge of 9 old pence was generally made by the Hosier for the hire of the knitting frame, this being usually docked out of weekly wages. The stockingner worked long hours, often working a 15 hour day. Ratby men prior to the Napoleonic wars would have earned 12/6d, about 77 pence a week. For this he would have had to have produced on average a dozen pairs of woollen stockings for his week's work. Framework knitting was a family affair. Father employed his time on the knitting frame whilst mother was kept busy seaming up the finished stockings. The children also helped winding thread onto bobbins, also young girls often helped their mother seaming up the finished goods. As late as 1875 there are references in the school log book to absences of girls who were required to help their mother in the finishing of garments. If we had visited the village on a Friday morning in 1800 and made our way along the old plough lane to the village Inn we would have found stockingners gathering waiting for the arrival of the Hosiers or their agents. The agent was generally referred to by the stockingner as the undertaker or 'Bag man'. The agent would collect the Bags of finished goods and after deducting money for frame rent and any shoddy work he would hand over fresh thread to the stockingner for his coming week's

work. I would imagine Friday lunch times at the Plough in those days was a time of much merriment, the wages having been paid, the village men could have a few drinks, and talk about village matters before returning to their humble cottages prepared for yet another week's work.

FOOTNOTE: The practice of putting out, continued in the village right up to the 1960's. Women outworkers employed by Wolsey could be regularly seen pushing a pram containing the distinctive woollen bags of finished work to Wolsey's premises in Stamford Street.

Michael T. Ball

QUIZ

1. How did the land adjacent to the Plough Inn known by locals as the "Stattee" get it's name?
2. How old is the Plough Inn?
3. Which village pub was formerly a farm and later a butchers shop?
4. Where was Harry "drummer" Barratts fish and chip shop?
5. Which is the oldest house in the village?

(One pound prize by M.T. Ball for first correct answers drawn from post bag or 20p per question if not all answered correctly).

Forward answers to: 26, Cottage Close, Ratby, winning entry will be announced in the next issue.

His 'N' Hers

Ladies and Gents Hairdressing

156 Station Road, Ratby.

OAP's welcome any day at reduced rates

| | |
|---------|-------------|
| Styling | Blow Drying |
| Perming | Colouring |
| Setting | Trimming |

Appointments not always necessary

Tuesday to Saturday
 Competitive prices and Friendly Service

For Appointments

Phone Leicester: 394429

OMBARD R.A.C. RALLY

November 16 - 20th saw the Geary's Bakeries Rally Team compete on the R.A.C. Rally. Every rally begins with scrutineering and the R.A.C. is no exception. The car looked immaculate and the scrutineering hall at Colerne Airfield, near Bath, was a first class venue, with crowds of people watching the scrutineers even though the top crews were not due to arrive until mid afternoon.

Sunday dawned and the rain came down in sheets and with a start time of 11.35 the top crews would be on their way to Sutton Park.

The rain began to ease on arrival at the first stage and the crowd that had greeted the front runners was now somewhat depleted but straight on at hairpin left was not a good start to the rally, recovering to take the grass line across the twisty bend that followed, as had Marku Allen earlier in the day.

Cirencester Park followed and then a run along the M5 to Birmingham and Sutton Park. Then on to Weston Park and perhaps the biggest moment the car spinning off the track and stopping just short of a fence. By now it was dark and the rest of the day's stages would be completed in darkness.

Day two saw the team 92nd overall and 6th in class and this was the start of the rally proper. However the first stage of the day was almost the last again the car came rather close to wrapping itself round a fence with a very steep drop on the other side. Even so more drama awaited the team in Kielder Forest. The car left the road and got firmly stuck but after digging out the wheels and using the spare wheel as a bridge the car regained the road. The main thing now was to keep in the rally and drive steadily to obtain a finish.

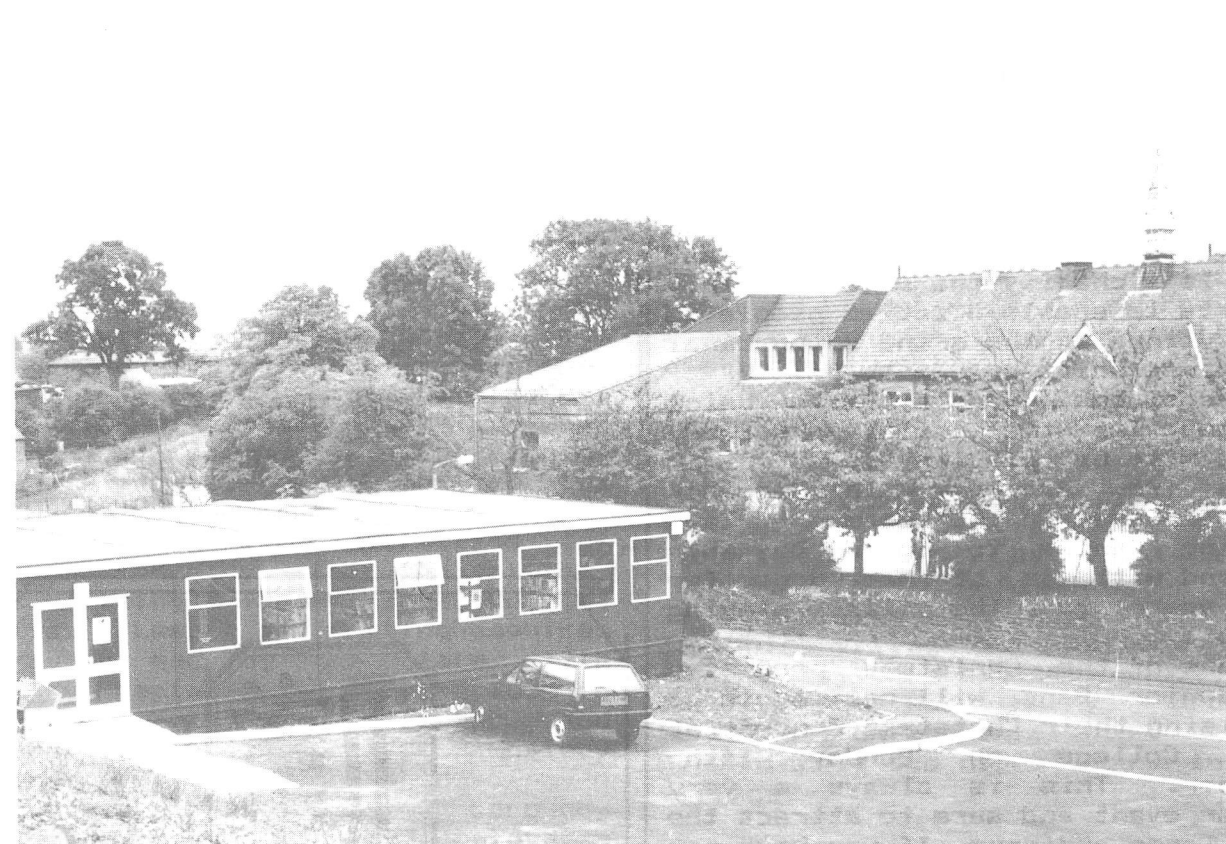


Day three and a dry if somewhat early start to the morning. The excursion in Kielder had cost the team dear now at 11th overall and 9th in class. The Scottish stages were in first class condition and the team gradually began clawing its way back up the field. Into the Lake District and the car is running well

but spectator traffic is causing problems and the organisers scrub road penalties at the Liverpool rest halt.

Day four and the rally moves to Wales. The Team's hopes are now buoyant as it is the last day but there are more stage miles today than at any other stage of the rally. Somewhere in the middle of a welsh forest the car decides to leave the road but this time help is at hand and a Landrover plus tow rope keep the team in the rally.

The last stage and cheers greet the car as it arrives at the final time control. It's been a hard slog but the car and the team have come through. Would we do it again? **DEFINITELY!**



A NEW LIBRARY FOR RATBY

On September 1st., the new library that so many people in Ratby had campaigned so long for, opened its doors to the public. The new building, just across the road from the school, is based on a re-modelled temporary classroom unit which provides a vastly increased space for public and staff alike. Not only are there more books in the library (about twice as many as in the old one), there are also records and cassettes, a larger area for children, a greatly expanded reference section, and tables and chairs for people who want to study. The emphasis throughout is on making the library easy and pleasant to use in a bright, spacious, attractive and comfortable building. For those who like to browse and read at their leisure, there are easy chairs in a small quiet reading area, with a range of newspapers and magazines to hand. Finally, a modest (but growing) local studies collection has been added, though at present there is little information about Ratby itself. It is hoped that this section can be developed with the help of people in the village

The library was officially inaugurated on September 18th. by Mr. Neville Hanger, Deputy Leader of the County Council. People from every walk of life in the village gathered at this informal occasion and heard

Mr. Hanger pay due tribute to the work of County Councillor Mrs. Pat Butler, and of the local District and Parish councillors, whose efforts had helped ensure that the people of Ratby got the library they had fought so hard for. The old library attracted a small but faithful group of readers. The new library is twice as big, with twice as many books, and open twice as long. And, the staff will tell you, it is twice as busy. Let's keep it that way!.

Richard Barlow, Librarian.

M. M. & K. A. PLUNKETT GENERAL BUILDERS

Quality Tradesman
Free estimate & advice

8 Markfield Road
Ratby, Leicester
LE6 0LP

Tel. Leicester 392464

GAILATEX KNITWEAR LTD.

3, Stamford St.,
Ratby,
Leicester.

Tel: 393103

Manufacturers of Mens & Childrens Knitted
outerwear.

PABARI'S RATBY NEWS

For a large selection of
Wines, Spirits, Beers, Ciders and Soft Drinks

ALL AT COMPETITIVE PRICES

Greeting Cards, Stationery and a vase selection
of Confectionary.

Newspapers and Magazines delivered daily
(Including Sundays)

Selection of latest videos now on hire

OPEN TILL 10.00 p.m. (MONDAY TO SATURDAY)

AND TILL 2.00 p.m. (SUNDAY)

7.00 TILL 10.00 pm. (SUNDAY EVENING)



Tel. Martin Fretter L.395179



If he's not you may
still have time to
'phone Martin
Fretter and plan
your Life
Assurance, Pension
and Investment
needs. Full
mortgage service
available.

RATBY PLAYGROUP

The Playgroup first opened sixteen years ago, and now meets every morning in the Church Rooms, opposite the Parish Church. We are open from 9.15 to 11.45 a.m., as well as two additional afternoon sessions for the older children.

We are registered by the Social Services Dept. for just 24 children per session. Because of the demand for places - there is just one playgroup in the village, we can usually only take children in the term after their third birthday.

DOING IT THEMSELVES

We are often referred to as "Playschool" which can give the mistaken impression that we are 'teaching' formal subjects.

Our aim is to provide a safe and stimulating environment where children can learn, and develop the skills they need by doing things for themselves - an extension of everything that they have been discovering and learning since birth.

MAKING FRIENDS

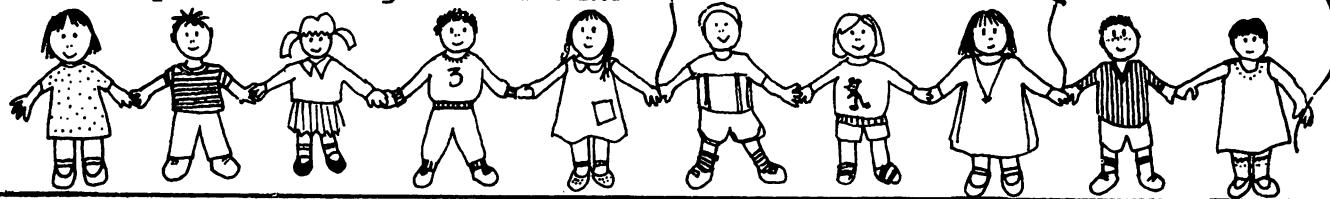
Children and their parents have also found playgroup to be a place where they can make friends.

We welcome involvement of parents - in fact the Playgroup is run by a committee of parents whose fund-raising efforts are essential to playgroup - we are entirely self-supporting.

BABIES AND TODDLERS

Parents are also welcome to get involved with the 'Toddler Group' which meets in the Church Rooms every Tuesday afternoon from 2 o'clock. So, if you are new to the village, or just didn't realise we were there, come along and join in, and enjoy making new friends for yourself and your children!

SPONSORED BY
WILLIAM MEE
TRANSPORT



PORTER'S DISCOUNT CARPETS

121/3 STATION ROAD, RATBY, LEICS
SHOP AT HOME SERVICE TEL: 393238/395202

- *Patterned lounge quality *50/50 WOOL berber
- *Bedroom quality
- *American Sculptured
- FREE FITTING
(MIN 10 sq yds)

★ Scotchguard kitchen carpet ★

ALL CARPETS ARE GUARANTEED

★ Cushionfloor ★

ALL AT COMPETITIVE PRICES

THE FAMILY BUSINESS
BUILT ON RECOMMENDATIONS

COMPENSATION FOR INJURIES CAUSED BY AN UNKNOWN ATTACKER - SEE A SOLICITOR

Sarah and John had just left a local nightclub when suddenly and without reason they were attacked by a gang of 5 or 6 youths. There were no witnesses. The incident happened so quickly neither Sarah nor John could help in identifying the youths. Sarah suffered a blow to the head and concussion. John however sustained a broken jaw and two cracked ribs. Both lost time from work. How could they claim compensation for their injuries and loss of income? If the youths could be traced they could be sued but there would not be much point if they have no capital or income to pay, but without even being able to identify the youths could they still claim?

On 1st August 1964 a government compensation scheme was introduced and is administered by the Criminal Injuries Compensation Board. The

Board will consider applications for ex gratia payments of compensation in any case where the applicant sustains personal injury directly attributable to a crime of violence and the injury is one for which the total amount of compensation is not less than £400. The application must be made in writing within three years of the incident to the Criminal Injuries Compensation Board, Whittington House, 19 Alfred Place, London WC1E 7EA. On receipt of the application the Board will consider the claim and assess the compensation on the normal basis of assessing damages at common law.

Sarah and John saw their solicitor who helped them complete and submit the application form. When the offer for compensation was made the solicitor advised as to whether or not the amount offered was acceptable. Despite the fact the youths could not be traced both Sarah and John's claims were successful. Sarah was awarded £2,600 whilst John received £9,750. It pays to see a solicitor.

There will be another legal problem next issue.

Cut this out for reference

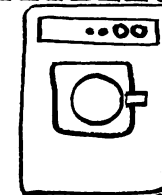
B. T. KEYMER

18 Parklands Avenue, Groby
Tel: Leicester 878926

**WASHING MACHINE &
CLEANER REPAIRS**

TO MOST MAKES

PROMPT, PERSONAL SERVICE



25 YEARS
EXPERIENCE!

BABY AND TOILET REQUISITES
HOME AND HOMOEOPATHIC MEDICINES

K. E. ELLIS M.P.S.

CHEMIST

58, MAIN STREET, RUGBY,
TEL: LEICESTER 393139.

AGFA FILMS
DEVELOPING AND PRINTING.

Centre Caravans Limited

STATION ROAD
RATBY, LEICESTER
TELEPHONE: LEICESTER 392057 - 387335

AWNING CENTRE

BRADCOT
HARRISON
SALOU
ALWAYS ON SHOW

A GOOD SELECTION
OF USED CARAVANS
ALWAYS ON SHOW

CARAVAN CENTRE

FINNESSE
SPRITE
ESPRIT
ECCLES
ELITE
COSMOS

MOBILE GAS HEATERS
OUR SPECIALITY
PRICES FROM £41

LEISURE CENTRE

FULLY STOCKED
SUPERMARKET
BARGAINS GALORE

CALOR AND CAMPING
GAZ STOCKISTS
A WIDE RANGE OF
QUALITY GARDEN
FURNITURE

VISIT YOUR LOCAL HOLIDAY MAKER AND PREPARE TO SPRING INTO SUMMER

1ST RATBY GUIDES

Would Baden Powell be proud of us? During the year we have had a very varied programme including work for badges, craft evenings and evenings of complete madness - just for the fun of it.

Girls have been successful with their work for Country-Dance, Fire-Fighter, Flower Arranger, Artist, Craft, Cyclist, Sportswoman, and Animal Lover badges.

After a demonstration of Peg Dolls, we were all able to have a go - with varied degrees of success. Other skills became apparent when patrols competed in an Easter Bonnet Competition, and the Best Dressed Witch, for Halloween.

Our outdoor activities have included Division Sports in the rain, Sponsored Walk and fun at the Play-area.

Well, what do you think?

Guiding in Ratby began in 1971 when the 1st Ratby St. Philip and St. James Brownie pack was formed and since then two other units have begun, the 1st Ratby Guide company and the 2nd Ratby Brownies. The movement is thriving even in this age when some people may look upon it as out of date, but the ideals of Guiding are as important now as when the founder Lord Baden Powell began it all those years ago. In fact, guiding in Leicestershire celebrates its 75th anniversary next year and we hope to have many different celebrations to mark this. So far a County Camp called Belvoir 87, Brownie Revels on a Gypsy Theme and an open service have been planned. We would like more girls to be able to join in our varied activities but this will only be possible with the help of more leaders. Ratby has a large population now and I am sure there are some among you who would welcome this challenge. No qualifications are needed just a willingness to take part in the meetings, activities and training, which will be provided. Remember there is a lot to be gained for oneself by helping others. Please contact me Angela Barbour, District Commissioner, Tel. 386557 if you could help in any way.

The Woodland Trust

In November the Trust generously agreed to donate a Christmas tree to our village (and one to Groby). A gesture recognising the part played by the villagers of Ratby in helping to save Martinshaw Wood and look after it.

By the time you read this the tree should be safely installed in its traditional spot.

RATBY METHODIST CHURCH CHRISTMAS PROGRAMME

Ratby Methodists warmly invite all who would like to join us at our special services for the Christmas season.

Sunday 14th December at 4.0 p.m.

- Carol Service

Christmas day at 9.30 p.m.

- Family Service (children please bring one of their presents to show.

Service ends 10.15)

Other Sunday services at the usual times of 10.0 a.m. and 4.0 p.m. (no service on the afternoon of 28th December).

We have recently completed a series of internal improvements and we can guarantee a warm church. And a very happy Christmas to you all!

GROBY COMMUNITY COLLEGE

879921

FOR A COMPREHENSIVE RANGE OF DAY AND EVENING CLASSES (CRECHE FACILITIES DURING THE DAY) CONTACT MARGARET HEAP.

FOR WEDDINGS, PARTIES, MEETINGS, DANCES OR ANY OTHER COMMUNITY NEEDS CONTACT NICK JEFFREY.

Two New Dance Groups

LINDA WILLIAMS SCHOOL OF DANCE (MODERN, JAZZ, TAP, POPMOBILITY)

FOR CHILDREN SATURDAY 2.30 - 4.30 DRAMA STUDIO

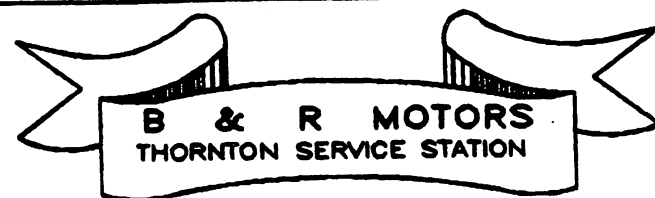
FOR ADULTS MONDAY 7.30 - 10.00 DINING HALL

CONTACT LINDA WILLIAMS DESFORD 2022

JOELINE (SEQUENCE DANCING)

FOR ADULTS THURSDAY 7.30 - 10.00 DRAMA STUDIO

CONTACT PAULINE ROYLE LEICESTER 311183.



THORNTON

Phone BAGNORTH 230289

| | | |
|--------|-------------|-------|
| M.O.T. | Cars | £8.00 |
| | Motorcycles | £7.10 |

GARAGE

Servicing
Repairs
Bodywork
Resprays

SALES

Petrol
Diesel
Paraffin
Flogas
Solid Fuels
Oils

SHOP

Accessories
Parts
Potatoes
Cigarettes
Confectionary
Videos

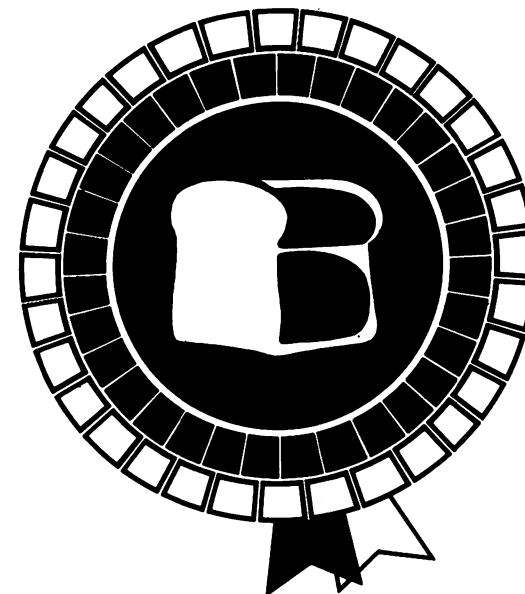
INSURANCE WORK UNDERTAKEN

OPEN 8am to 8pm SATURDAY TO SUNDAY

SITUATIONS VACANT.

New Leaders wanted for happy, successful 5 year old Brownie Pack. No previous experience necessary but applicants must have a strong constitution, caring attitude and a sense of humour is essential. Inspection of Pack highly recommended and available on Tuesday evenings at the Methodist Chapel School Rooms between 6.15 and 7.30. no appointment necessary, coach parties welcomed! Further details available from either Kathy Byrne (tel. 394621) or Ros Gould (tel. 393279), 2nd. Ratby Brownies.

YOUR DAILY BREADWINNER



Geary's bread has won more than 3,000 major National Awards. And we deliver top quality daily to shops, restaurants, hotels and canteens. Freshly baked bread, rolls and health breads — with specialities like wedding and birthday cakes to order. Champion taste and champion service from England's Champion bakers.

Always ask for...

GEARY'S BAKERIES

RATBY — TEL: LEICESTER 386600

Crow pie

Children's page

Jokes

Who was the first
underwater spy?

James Pond samos
ii puoJ sawos

What is a crocodile's
favourite game?

ii d4NS

COMPETITION

A prize will be given for
the best drawing sent in !!
it must be on paper no
bigger than this page, it
must be drawn in pencil
or black felt pen.

Don't forget to put your NAME
ADDRESS and AGE on the
back !!

Please send
your drawings, letters, poems, stories or
competitions through Scouts, Guides, Cubs
Brownies, Beavers, or the Library.

Drawing by Maryam

DID
? YOU KNOW

THE YOUNGEST
PERSON TO WRITE
A BOOK WAS
ONLY 4 YEARS
OLD !!

1ST RATBY SCOUT TROOP

The Scout Troop is now 2-1/2 years old. At present we have 21 boys aged between 10 and 15 years of age.

The troop meets every Friday evening for various activities some of which depend on the time of year and/or the weather. Some of the activities covered in the last 2-1/2 years include: scout badgework, canoeing, filmshows, visits (e.g. police station, firestation), cooking, a guided ghost walk of Leicester. These are only a few of the wide variety of activities covered.

Scouts don't just meet on Friday nights. There have been a number of camps - some organised by the leaders, and some by the lads themselves. So far the furthest away we have been was to Buckmore Park in Kent.

Other weekend pursuits have also taken place such as an afternoon fishing, and we entered a team in the district 5 a side football competition.

One of our recent successes came when we took part in a district camping competition at John's Lee Wood. Everything that the boys did during the camp including discipline, cooking, tidiness and general camping ability were marked. We entered 2 patrols into this competition and they came a very creditable 1st and 2nd!

On a more serious note we attend the St. Georges Day parade in the city and also the Remembrance Day parade in Ratby.

I hope that this note has given you an insight into this troop and if you would like to know more please don't hesitate to contact us.

Yours in Scouting
P. Smith

SCOUTING

The Worldwide Brotherhood of Scouts aim is to encourage the physical, mental and spiritual development of young people so that they may take a constructive place in society. The movement is represented in Ratby by:-

- one Beaver Colony
- two Cub Packs
- one Scout Troop

The only Scouting group not represented is the Venture Scout Unit which caters for young adults aged Fifteen and a half upwards. There are today 16 million scouts in the world, in other 150 countries, quite a family.

Scouting offers a wide range of challenges, excitement and adventure to boys and young men from 60 to 20.

The various groups in Ratby have in the past taken part in competitions, Chess, Swimming, Cross-country runs, Camping, Football, and have been Sailing. Abseiling, Canoeing, Hiking as well as learning the basics of Lifesaving, First aid, Cooling and Pioneering.

Scouting helps young people to be self-reliant, dependable and responsible; to show initiative and leadership qualities; to cope with emergencies; to be aware of the needs of others and be prepared to help those less fortunate than themselves.

The Scout training scheme is progressive, the effort put in counts as much as the achievement and the Awards don't only go to the bright ones.

There are also badges for proficiency in many individual activities. The Queen's Scout Award and the Duke of Edinburgh's Award which can be important later on when job-hunting.

DEADLINE !!

Deadline for articles, adverts,
etc for inclusion in the next
issue of this publication is
FRIDAY JANUARY 16th

ADVERTS phone 395170

ARTICLES phone 393279

EDITOR ALAN SIMS
phone 393367

1ST. RATBY ST. PHILIP & ST. JAMES BROWNIES

Recently we have been working towards the Safety in the Home badge so watch out mums and dads you might get some advice from your daughters. During the summer holiday we went to the Scouts site at Oaks in Charnwood for our Pack Holiday. A theme of Circus Time was undertaken. Brownies were expected to take an active part in the cooking, washing up and other chores but to counteract this they played, took part in competitions and outdoor activities. To remind them of their holiday various craft items on the circus theme were made.

SPONSORED BY SAUNT BROS. TRANSPORT

THE RATBY

CHAIRMAN

"SPORT FOR ALL

Mr. M. Shipman
Leics. 394784

SPORTING

SENIOR CRICKET

Contact:
Mr. J. Holmes 875923

Presently fielding 3 Saturday teams
1 Sunday team and 2 evening
cricket teams. Also net facilities.

SENIOR FOOTBALL

Contact:
Mr. G. M. Plant 898150

3 Saturday teams presently playing
in the City League Divs. One, Five, Six.
1 Sunday 74 League side.

LADIES NETBALL

Contact:
Mrs. S. Preston 386797

A successful and well established
section within the Sports Club

LADIES ROUNDERS

Contact:
Mrs. K. Parker 394184

The results achieved by the girls
have made them consistent winners
and well worth watching ask
the "Fellas".

LADIES DARTS

Contact:
Mrs. P. Moulton 394867

The ingredients for success in this
section is to enjoy an evening
out with the girls.

ANYONE INTERESTED IN JOINING ANY
ANY FURTHER INFORMATION PLEASE
OR CALL IN AT THE CLUBHOUSE

SPORTS CLUB

THE FAMILY"

SECRETARY

Mr. I. Carman
Leics. 386257

SECTIONS

JUNIOR CRICKET

Contact:
Mr. F. Wake 394892
Mr. M. Shipman 394784

With a string of successes behind them this section consistently produces quality cricket players.

JUNIOR FOOTBALL

Contact:
Mr. M. Webber 393847

These young sides are a credit to the 2 Villages they represent, playing under the title of Ratby & Groby Junior F.C. Presently fielding 7 teams from 9 Yrs. to 16 Yrs. old.

VOLLEYBALL SECTION

Contact:
Mr. S. Ginns 875838

A newly formed section within Ratby Sports Club, but a side with League experience

MIXED ROUNDERS

Contact:
Mrs. K. Parker 394184

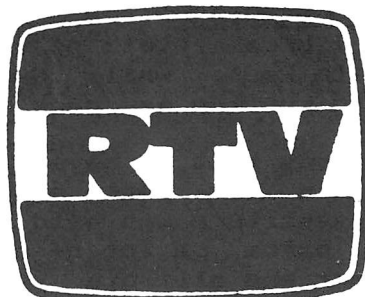
This section has the best of both sexes and is a natural progression to the Ladies side.

POOL SECTION

Contact:
CLUB 392474

A new section within the club. Requires an interested person to form further sides.

OF THE ABOVE SECTIONS OR REQUIRE
CONTACT THE SECRETARYS LISTED ABOVE
AND HAVE A CHAT WITH US.



RATBY Television

THE BEST IN LOCAL SERVICE!

27 Station Road · Ratby · Tel: Leicester 394544
106 Main Street · Markfield · Tel: Markfield 245221

SALORA

**Digi
Computer** TV Series

INTEREST
FREE
CREDIT
Over 9 Months



DigiComputer brings increased reliability and gives sharper pictures, better colour and sensational sound at the touch of a button from video, cable, satellite, camera, computer games, Teletext etc. Plus real wood cabinets.



RATBY Television

27 Station Road · Ratby
· Tel: Leicester 394544

SALORA Scandinavia's largest TV manufacturer