

WOT!

About Ratby

PUBLISHED BY RATBY SCOUT GROUP

LEWIS IS COUNTY SWIMMING CHAMPION!

For the third year running Ratby's Lewis Kerrod has become the Leicestershire County 12 year old Champion. He competed in eleven events and gained the most overall points. His top events at the moment are the 400 metres Freestyle and 100 metre Butterfly and he achieved 8th place in these at the Regional Finals. To take part at Regional level Lewis had to compete against swimmers from across the Midlands and gain 9 qualifying times. A fantastic achievement! Lewis, now 13, has just finished the current season with a 1500 metre open water swim at Bosworth Water Park, where he had to withstand water temperatures as low as 15 degrees in the company of local ducks which did not make way for the competitors! Lewis is pictured below after finishing in a very good ninth place!



FIELDING MEADOW

Off Fielding Lane, Ratby, LE6 0AS

**Discover our latest release of 'Eco' homes
at Fielding Meadow, in the village of
Ratby.**

- *Space for Growing Families*
- *2 bed Semi's from 154,950*
- *3 bed Semi's from 189,950*
 - *Traditionally built*
 - *Super-Insulated*
- *Help to Buy on selected Plots*
 - *Homes for the future*
 - *Available Now*

**Step inside our excitingly different
showroom this weekend 12-4pm
Friday, Saturday and Sunday or call
01162390600 to view.**

Kirby Grange Farm
Taverner Drive, Ratby, Leicester LE6 0HQ

www.cawrey.co.uk

Email: enquiry@cawrey.co.uk

COUNTY CHAMPION

Continued from page 1

Swimming is very much a family affair in the Kerrod family. Mum Philippa is a volunteer swimming coach, and she took Lewis and younger sister Ellie for their first swim when they were just two months old. They both loved it, and Lewis joined Leicester Penguins at the age of seven, followed soon after by Ellie. They train four evenings a week, and swim in competitions at weekends. Ellie, aged nine came 5th in the County Competition this year. It won't be long before she is featured on our front page! Both Lewis and Ellie do have other interests, so swimming is not totally dominating their lives. Dad David is a squash player, and that's where Lewis gets his competitiveness from says Philippa!

'But,' she adds, 'swimming is not just about the competition. It helps children gain confidence too. And it's sociable. Unlike school where young people keep to their own small same sex groups, at their swimming club, Leicester Penguins, they make friends of all ages in mixed groups, gaining support from older swimmers and helping those younger than themselves.'

Philippa recommends getting involved in swimming if you enjoy it.

'It's fantastic for the team spirit, plus it is an individual sport where involvement in championships boosts self esteem and confidence.'

Apparently there is a shortage of male swimmers in the County.

Lewis is aiming to get to the Nationals next season, and his ambition is to swim for Team GB.

So watch out for Lewis Kerrod, he'll surely go far. We hope he'll be back on our front page again soon!

HIS and HERS

**For ALL ASPECTS of
LADIES AND GENTS
HAIR DRESSING**

Specialists in Permanent Waving

**156 STATION ROAD, RATBY
239 4429**

RATBY VILLAGE SOCIETY

Meetings are held in the Village Hall, Main Street at 8pm on the third Tuesday of each month except July, August and December when there are no meetings. Admission; members £1.60, casual Guests £2.50. Refreshments included. All welcome.

17th September – A talk on 'The Work of the RSPCA' Fundraising goods will be on sale to help with the work of the charity. Donations of pet food, stamps, and old mobile phones are always welcome.

15th October – A talk by Jim Roberts on 'Mablethorpe Children's Holiday Centre.'



MELSWAY

DRIVING SCHOOL Est. 1991

Mel Shipley D.S.A. A.D.I. M.I.A.M.

Pass Plus Registered

***Complete Beginners* Part trained*
Motorway Tuition and Refresher lessons.**

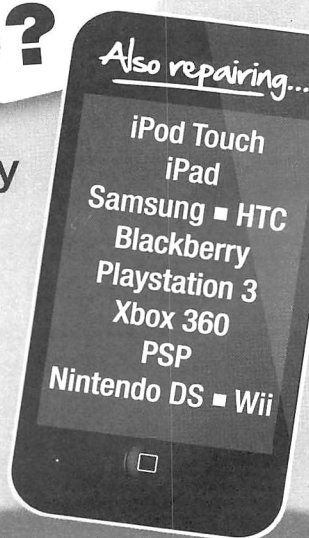
**Telephone 238 6149
3 Barton Close, Ratby.**



BROKEN iPhone?

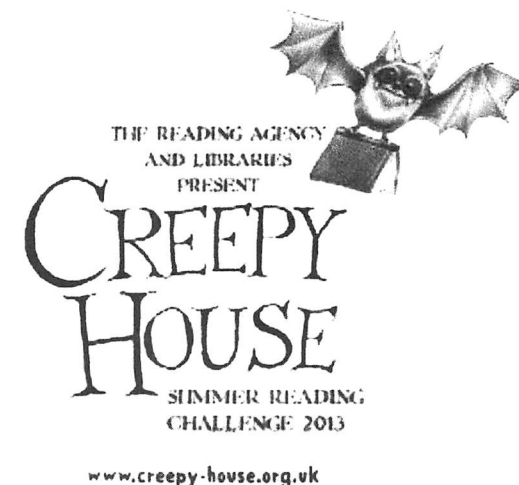
Also repairing...

- Fast, Friendly Service
- All Repairs Guaranteed
- Price Match Promise



**FOR AN
INSTANT QUOTE CALL
0116 286 6447**

Unit 33, King Street Buildings, George Street Entrance,
Enderby, Leicester LE19 4NT
www.iparepair.co.uk



Don't forget this summer's Reading adventure for children aged 4 to 12 years. Join up for free at Ratby Library and start the challenge if you dare!

RATBY PHARMACY

10 MAIN STREET LE6 0JG

***FREE PRESCRIPTION COLLECTION**

SERVICE from all surrounding surgeries.

JUST PHONE US ON 239 3139 with your requirements. We will process your prescription with the surgery.

All you do is COLLECT IT from us, or we can deliver to your home if needed.

**You can e mail us with requirements;
ratbychemist@aah-n3.co.uk**

GROBY ZUMBA DANCE FITNESS!

**Mon 5:30-6:30pm
at Groby Village Hall**

Cost is just £4!

Everyone is welcome!

ZUMBA is a great way to get fit, healthy and toned whilst having fun!

Whether you are an exercise addict or an exercise phobic, come and bring your friends and family and join the party!

For more information please contact Charlotte:

Tel: 07939 588092

Email: charlotte.tomlinson@hotmail.com
Website: www.fit4dance.com or www.zumba.com



IN SEARCH of TREES

Following the informative talk on threats to our native trees held earlier this year, the Ratby Parish Church ECO Group organised an evening walk on Thursday 4th July. The aim was to explore a part of the village and environs and identify trees, particularly ash trees which might be in trouble.

A group of eleven people gathered at the church and set off with our knowledgeable guide, Tim Adkin. We began by looking at trees visible from the churchyard, and saw that a nearby ash looked healthy. This was not so of a group of young Wych Elms on the Churchyard boundary which we learned were suffering from Dutch Elm disease. We noted the dying branches of a wild cherry, suffering the rigours of old age, as were the flowering cherries alongside the school playground.

Our route led us along the Burroughs Lane, through Whirlybones wood and back across the Little Brook to Desford Lane. We noted the willow plantation which is being coppiced for biomass, and the tree management taking place in Whirlybones Wood. Here hazel was being coppiced, and oaks were having their lower branches removed to encourage tall straight growth.

We saw a variety of ash trees of different ages, and were relieved to learn that none showed any sign of disease. A particularly fine example on Burroughs Road held many branches aloft, and had probably been pollarded in the past, a practice which can prolong the life of trees. Some trees appeared to be suffering stress, probably caused by climate change or their location, but it was great to discover that for the moment our Ash trees are looking healthy.



TRIPLE JUMP SUCCESS



Congratulations to Joseph Earl; year 10 student at Groby Community College who won a silver medal in the intermediate boys triple jump at the Leicestershire Schools Athletics Championships at Saffron Lane on Saturday 8th June. Joseph, who lives in Ratby is pictured above left receiving his medal, recorded a personal best of 11.79m with his opening jump. **A huge well done!**

Groby Community College

PRE-SCHOOL RAISES OVER £600 FOR NEW RESOURCES

On a Saturday morning in June Ratby Pre-school held a Sponsored Tots Toddle and Activity Morning and were delighted with the support from children and families in the village.

Jill Botterill Pre-School Leader said "We have been overwhelmed by the response from the children and their families especially in the current financial climate. We'd like to thank everybody who came along, all the helpers and our really generous sponsors."

The children were invited to dress up in their favourite Disney costumes and take part in a short sponsored walk around the village looking out for some well know characters posted en-route. They then came back to the Church Rooms for more craft activities, face painting, games, cakes, tombola a raffle and tea!

The sponsor money is still rolling in and the Pre-school is looking forward to not only funding a 'leavers trip' in the last week of the Summer term, but also updating some of the much needed toys and resources for the new term in September.

Jill added "We rely quite heavily on these fundraisers and have had some great feedback from parents, so we plan to run this kind of event again in the Autumn."

The Pre-school which is a charity run on a not-for-profit basis, runs sessions for 2 and 3 year olds every day in term time. Their brand new website can be found at:

www.ratbypreschool.co.uk

Susie Ackland



RATBY CORONATION CARNIVAL – A GREAT SUCCESS!

This is the second year that the village has celebrated HM The Queen's Diamond Jubilee and Coronation and this year it was decided to give a donation to the Oncology Unit at Leicester Royal Infirmary.

The day was supported by various village groups including Ratby Village Society, Local History Group, Methodist Church, Parish Church, Ratby Sports Club, Scouts, Ratby Women's Institute and the Parish Council. There were numerous stalls to visit, refreshments, BBQ and the children had plenty of entertainment with mini Land Rovers, bouncy castles, roll-a-penny, lucky-dip, races etc.

The Parish Council would like to thank all those village groups who supported the event. A special thank- you to Monty Vann who transported tables/chairs to the venue.

Thanks also to those groups who worked extremely hard on the day and raised money for the Oncology Unit. The Council is pleased to report that a cheque for £1000 has been sent to Oncology at LRI.

Well done everybody!

Merle B Joyce

Chairman – Ratby Parish Council

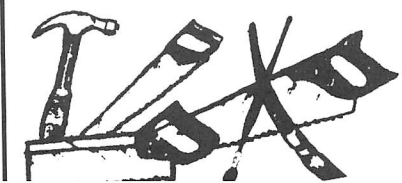


A.GOODWIN

CARPENTRY, JOINERY
PROPERTY REPAIRS

0116 2387316

MOBILE: 0777 9872211



JULIE'S HAIRDRESSING

MAIN STREET RATBY

Traditional and Modern Styling

Telephone 239 2406

Pabari's Ratby News. (Est. 25 years)
5 Station Road, Ratby, Leicester. LE6 0JQ.
Tel: 0116 239 3287.

We Deliver Daily, Evening & Sunday Newspapers.
A wide choice of Magazines, Greeting Cards & Stationery.

Sweets, Confectionary, Tobacco, Soft Drinks & Milk.
Top Up Your Mobile Phone, Electric & Gas.
A Vast Selection of Beers, Wines & Spirits

Play The National Lottery Here Now!
Opening Times:-
Mon-Fri :- 5.00am to 1.00pm, then 2.30pm till 10.00pm
Sat:- 5.00am through until 10.00pm
Sun:- 7.00am to 2.00pm, then 7.00pm till 9.00pm

27

0116 319 3119

Café 27

Café 27

NOW FULLY OPEN

9 until 4

ALL DAY BREAKFASTS

FULL DAILY MENU

Daily Specials on the board.

REFRESHMENTS and SNACKS

MILK BAR

Take Away Service.

OAP Special £4.99 for 2 courses

Children's packed Lunch Service

0116 319 3119

27 Station Road, Ratby.

CAFÉ 27 NOW FULLY OPEN!

A full menu is now available from 9 until 4 every day. There's plenty of comfortable seating at tables, or on cosy sofas if you want to pop in for drinks or light refreshments and browse the local paper. Baguettes, Panini and toasties are all served with chips and salad.

There is a daily specials board, and children's meals with a main course and ice cream are just £2.99.

For the Pensioners there is a two course meal for just £4.99, from 11 until 4 every day.

The Café has a take-away menu too, and will deliver within a 4 mile radius of Ratby for orders of £20 or over.

The Breakfast Challenge!

Breakfasts are served all day, and there is a special challenge for the very hungry! Eat all 27 items and you can have your breakfast for free! Apparently 3 people have so far tried and failed. Will you be the first to succeed?

School Lunches

Don't forget this great service! Ring the night before and they'll pack up a school lunch for you to collect in the morning! Telephone 319 3119.

Local Community

Café 27 is very much a friendly local venue. On a typical morning there were a couple of local business people calling in for take away coffees, a group of ladies enjoying cups of tea, and mums with children coming for lunch. Yvonne and Gemma say they will provide space for local groups to meet, and would welcome groups of people such as expectant mums wanting to get together, or those wanting to enjoy a 'knit and natter.' Just come in and talk to them and they'll see what they can do.

Eco-Tip from Ratby Church ECO Group

Don't leave the TV, DVD, Video, computer and other devices on standby, especially overnight. They consume lots of electricity even when they look innocently sleepy. If you're not using it, switch it off.



OAKLANDS

RIDING SCHOOL

WE CATER FOR EVERYONE FROM

THE NOVICE TO EXPERIENCED RIDER

All weather riding area

Ring Julie on 238 7570

Ratby Post Office & Newsagents

- ✓ Passport Check & Send
- ✓ Digital Photobooth
- ✓ Travel Money & Insurance
- ✓ Personal & Business Banking
- ✓ Insure your Life, Car, Van, Motorcycle, Home or Pet
- ✓ Post Office Credit Card
- ✓ Homephone or Broadband
- ✓ Bill Payments
- ✓ Rod Fishing Licences
- ✓ Many Other Post Office Services

30 MAIN STREET, RATBY, LEICS
TEL: 0116 2393001

Large selection of Papers, Mags, Tobacco, Confectionery, Gifts & Greeting Cards etc.

Shop Hours:	Post Office Hours:
Mon to Sat	Mon to Fri
6:00am - 5:30pm	9:00am to 5:30pm
(7:30pm Wed & Sat)	Sat 9:00am to 12:30pm

LOTTERY SUCCESS

A 'Big Lottery Fund' grant of £8,231 has been awarded to Ratby Village Society. It gives the Society the opportunity to purchase multi-purpose folding tables, stacking chairs, screening, display boards and small staging units.

These will be of great benefit for the events we organise in the community which include The Annual Show, Art Exhibition and Craft Fair and the Open Meetings. Tea Dances and Beetle Drives are planned to follow on shortly.

The Society values your continued support for these events, which are open to everyone. You don't have to be a member to join in.

LITTER PICKING

If you find you are regularly voluntarily litter picking in Ratby the Village Society Anti-Litter Group have one or two picking sticks available to those who would like one.

Please phone Chris on 2390475 or Jane on 239 5350.

Thank you to all our regular litter pickers for the wonderful work you do to keep Ratby a clean and tidy village

RATBY COMMUNITY ORCHARD

Orchard members have been busy on regular working parties weeding around the trees and removing some apples following the 'June Drop' to ensure larger fruit.

This year's harvest is disappointing, with some trees bearing no fruit, others very little. A few of these older varieties are biennial.

Pond Dipping

This year's pond dipping will take place on Wednesday August 7th at 7 pm. Subject to weather conditions and water in the pond! Children must be accompanied by an adult. Please bring a net and a white plastic tub for examining finds.

DEADLINE for issue 162
OCTOBER / NOVEMBER 2013
FRIDAY 13th SEPTEMBER

EDITOR 239 3367
ADVERTS 239 3279

ARTICLES 239 4873
Articles may be sent to 3 Ingle Drive
Or Email: sueboud@hotmail.com

Porter's Discount Carpets

121/3 STATION ROAD, RATBY
Telephone 239 3238 or Mobile 07872 488271

SHOP AT HOME SERVICE



NOW INCLUDING L.B.P. Tiling SPECIALISTS IN CERAMIC AND PORCELAIN TILING