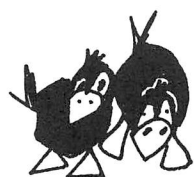


AUGUST/SEPTEMBER 2012

ISSUE 155



# WOT!

About Ratby

PUBLISHED BY RATBY SCOUT GROUP



## RATBY'S FIRST FUN RUN



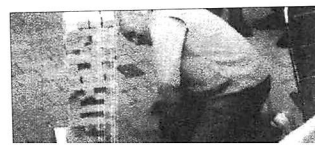
Pictured are runners: no 83- Charlotte Turner, winner of the Fun Run, 84- Nathan Jackson, 63- Isabel Dunmore, (John Day's granddaughter), 82 -John Turner and 81 - Anna Ward.

This event was named the "John Day 5k" as the original idea for a fun run came from John who was a member of the Church family and one of the team of Bell ringers. John died last September and this was felt to be a fitting tribute to a much loved man. Councillor Ken Hunnybun blew the horn for the start of the race and was there at the end to hand out goody bags to the thirty seven runners.

All involved with the Fun Run were delighted with the event and felt it was a fantastic opportunity to add more community spirit to the village. It has been decided that this will become an annual event for the village. Plans are already in place to agree a date for next year's run which will be a separate event from the Church Fete.

More about the Fete on page 2

FLICKER PICTURE FUN!



WOT RATBY WEATHER @ [www.ratbyweather.co.uk](http://www.ratbyweather.co.uk)



## FIELDING MEADOW

OFF FIELDING LANE, RATBY, LE6 0AS

**NOT ALL NEW HOMES ARE THE SAME  
COME AND VISIT OUR SHOWHOME TO  
SEE THE DIFFERENCE**

### Featuring

Highly Insulated Walls, Floors & Roofs  
Air Source Heat Pumps for Efficient Heating & Hot Water  
Low Energy Lighting as Standard  
Light & Spacious Rooms with large South Facing Windows  
for Solar Gain

**SHOWHOME OPEN 12-4 P.M. - FRIDAY SATURDAY & SUNDAY**

For further details please contact

Cawrey Limited

Kirby Grange Farm, Taverner Drive, Ratby Leicester LE6 0HQ

**Tel: 0116 239 0600**

[www.cawrey.co.uk](http://www.cawrey.co.uk)

email: [enquiry@cawrey.co.uk](mailto:enquiry@cawrey.co.uk)

## CHURCH FETE & FUN RUN

For a few short hours the relentless rain stopped on the afternoon of Saturday 22<sup>nd</sup> June just long enough for the annual fete to take place.

The Parish Church was turned into a lovely peaceful tearoom, serving endless cups of teas and home made cakes. Across at the Church rooms and gardens there were stalls and games for the children as well as great entertainment from Ratby Junior Band and 2B dance productions.

In an endeavour to bring an Olympic theme to the day there was a mini Olympics for the children with races for all age groups as well as a mini fun run held on the Burroughs Recreation Park. For the adults a 5k fun run was organised through the Burroughs. The fete had another successful year thanks to the hard work and support of a great band of people.

The date for next years fete is 29<sup>th</sup> June.

Joan Hawkins (fete organiser)



## RATBY VILLAGE SOCIETY

Our meetings are held in the Village Hall, Main Street, at 8pm on the third Tuesday of each month. Admission: Members £1.60, Casual Guests £2.60. Refreshments included. Everyone welcome. Please bring a friend.

**21<sup>st</sup> August** - Our planned speaker, David Scott has had to cancel, but we hope you will welcome Lorna Allen from VISTA Society for the blind.

**18<sup>th</sup> September** - The Leicester Coroner, Mrs Catherine Mason delivers her talk entitled 'My Duties as H. M. Coroner.'

**16<sup>th</sup> October** - Anne Halsey describes a rail trip from Toronto to Vancouver and into the Rockies via the Rocky Mountaineer.

**20<sup>th</sup> November** - 'The lives and music of George and Ira Gershwin,' with Chris Simpson.

There is no meeting in December.

## CONGRATULATIONS!

Belated Birthday greetings to a regular, and probably the most senior contributor to the magazine! Hoz Gamble is pictured celebrating his recent 90<sup>th</sup> birthday. He has sent us his thoughts on the event in his inimitable poetic style:



### DON'T ASK ME

If three score years and ten  
be the nominal span for men  
how is it, then, that I've  
been so blessed as to survive  
for ten plus another ten?  
What then?  
More pills and potions  
and magic lotions?  
But truth to tell, I must confess,  
'tis a burden on the NHS.

Hoz  
2012

## HIS and HERS

### LADIES AND GENTS

### HAIR DRESSING

OAPs REDUCED RATES

Appointments not always necessary.

156 STATION ROAD, RATBY 239 4429

## WHEELED SPORTS FACILITY

The long-awaited wheeled sports facility has been installed at Ferndale Park, Ratby. This has been made possible by the support and financial contribution of the following:

- Hinckley & Bosworth Borough Council-Parish & Community Initiative Fund
- Leicestershire County Council - Shires Grant
- Leicestershire County Council - Community Forum Budget
- Harlow Timber Systems
- Ratby Community Group
- Ratby Parish Council

This is an excellent facility and, hopefully, it will be used in a responsible manner for the benefit of all ages and levels of expertise.

Remember it is there for your benefit - so please look after it and ENJOY!

**RATBY PARISH COUNCIL**  
13 Station Road, Ratby, Leicestershire LE6 0JQ  
Tel: 0116 239 0167  
Email: [ratbypcouncil@btconnect.com](mailto:ratbypcouncil@btconnect.com)

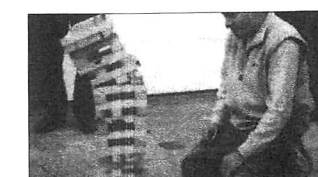
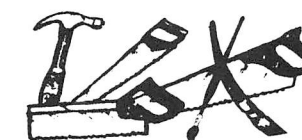


### LETTERS and ARTICLES

We welcome letters and articles, but reserve the right to edit them or deny publication. Your name and address must be supplied, but you may ask for them to be withheld. Views expressed in articles and letters do not necessarily represent the views of the Publishers. We cannot be held responsible for information in advertisements, which we accept in good faith.

## A.GOODWIN

CARPENTRY, JOINERY  
PROPERTY REPAIRS  
0116 2387316  
MOBILE: 0777 9872211



## Porter's Discount Carpets

121/3 STATION ROAD, RATBY

Telephone 239 3238 or Mobile 07872 488271

### SHOP AT HOME SERVICE



NOW INCLUDING L.B.P. Tiling SPECIALISTS IN CERAMIC AND PORCELAIN TILING



## FOOD, FRIENDSHIP & FLOWERS

Following the highly successful 'Extravaganza of Wedding Flowers and Dresses' in 2010 then 'Harvest through the Ages' in 2011, St Philip and St James Church Ratby are this year opening the Parish Church over the Harvest Festival weekend for a celebration of:

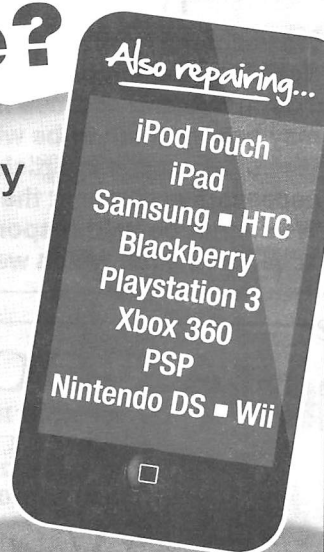
*'Food, Friendship and Flowers'*.

Why not call in on either Saturday 6<sup>th</sup> October or Sunday 7<sup>th</sup> October to see the various themed attractions and decorations in church? Ploughman's lunches will be served between 12-2pm on Saturday. On Sunday there will be afternoon teas available from 2-4pm along with musical accompaniment provided by Mr Christopher Banks our new choir leader and organist. A 'Bring and Share' Harvest Supper is planned for Saturday evening and it will be our Harvest Festival Family Service at 10 o'clock on Sunday morning where the traditional donations of foodstuffs will be gratefully received. We would love you to join us at some point over the weekend. **Details: Revd Peter 0116 239 4606.**



## BROKEN iPhone?

- Fast, Friendly Service
- All Repairs Guaranteed
- Price Match Promise



**FOR AN INSTANT QUOTE CALL  
0116 286 6447**

Unit 33, King Street Buildings, Enderby, Leicester LE19 4NT  
[www.iparepair.co.uk](http://www.iparepair.co.uk)

## VILLAGE HALL GRANT

The committee members of Ratby Senior Citizens Welfare Association are happy to announce that our treasurer has acquired a grant from Awards for All of £10,000.

This grant will enable us to lay a new floor in the hall. The existing floor has been down since the hall was built in 1958, and has required a lot of repair and attention during recent months.

Work will start on August 6<sup>th</sup> 2012, so the Village Hall will be closed for two weeks from that date.

Hopefully we will be back to normal when work is completed and once again villagers can enjoy the facilities.

*Look out for our feature on the new Chemist Start in the next issue!!*

## RATBY CHEMIST LTD.

10 MAIN STREET LE6 0LL

**\*FREE PRESCRIPTION COLLECTION SERVICE! \***

From surrounding surgeries.  
**JUST PHONE US ON 239 3139** with your requirements. We will process your prescription with the surgery.  
**All you do is COLLECT IT from us, or we can deliver to your home if needed.**  
You can e mail us with requirements;  
[Ratbychemistltd@aol.com](mailto:Ratbychemistltd@aol.com)

**YOUR LOCAL CAB COMPANY  
NOW AVAILABLE**

## GROBY CABS

**LOCAL & LONG DISTANCE  
ANYTIME ANYWHERE**

**AIRPORT TRANSFERS  
E.MIDS = £20.00**

**PHONE:  
0116  
2 31 22 14**

## CHRISTIAN AID WEEK

This year we raised an amazing total of **£2067.57!** This is around £400 more than last year which was our previous best year ever. Considering the economic climate this shows remarkable generosity.

A great big thank you to all who took part, whether by donating, collecting, counting or helping in any way. We could not have raised such a fantastic amount for this worthwhile charity without you.

An additional thank you to those who filled out the Gift Aid form. This means that an additional £87 can be recovered from 'the tax man.' Christian Aid week has run since 1957, and the money raised each year makes a massive impact in the fight against poverty around the world. This year we are highlighting work in Sierra Leone through our partner, the Methodist Church of Sierra Leone, providing farming tools so that communities can make long lasting change towards ending poverty. Visit [christianaid.org.uk](http://christianaid.org.uk) for more information.

## RATBY LIBRARY

The new opening times are:

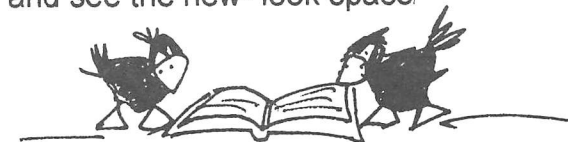
**Monday 2 – 5 pm**

**Wednesday 2 – 7 pm**

**Thursday 10 -12 and 3 – 5 pm**

**Saturday 10 – 1 pm.**

If you haven't visited recently why not pop in and see the new- look space.



**WATCH  
BATTERIES  
& STRAPS**

**FITTED WHILE  
YOU WAIT**

**ALL BRANDS**

## SYKES JEWELLERS

**8 Bradgate Road, Anstey  
Tel: 0116 236 2510  
[www.sykesjewellers.co.uk](http://www.sykesjewellers.co.uk)**

## RATBY'S SIXTH ANNUAL ART EXHIBITION and CRAFT FAIR

This year's fair takes place once again in the Church Rooms and beautiful setting of Ratby Parish Church (Saturday only).

**Saturday 3<sup>rd</sup> November from 10 am to 3 pm.**

**Sunday 4<sup>th</sup> November from 10 am to 2 pm.**

There will be lots of new Christmas gift ideas, from paintings to preserves, pickles and flavoured oils, wooden toys and rag dolls, wood turning, handcrafted scarves, jewellery, soap, body butter and bath bombs, cakes, cards and cross stitch, knitted crafts and fashion and beautiful things for the home. Look out for Ratby's 1<sup>st</sup> Girls' Brigade and Ratby Neighbourhood Watch. Guided tours of the church take place on Saturday. On both days our lovely ladies from Ratby Women's Institute will be selling their delicious refreshments.



## Ratby Post Office & Newsagents

- ✓ Passport Check & Send
- ✓ Digital Photobooth
- ✓ Travel Money & Insurance
- ✓ Personal & Business Banking
- ✓ Insure your Life, Car, Van, Motorcycle, Home or Pet
- ✓ Post Office Credit Card
- ✓ Homephone or Broadband
- ✓ Bill Payments
- ✓ Rod Fishing Licences
- ✓ Many Other Post Office Services

**30 MAIN STREET, RATBY, LEICS  
TEL: 0116 2393001**

Large selection of Papers, Mags, Tobacco, Confectionery, Gifts & Greeting Cards etc.

**Shop Hours:**  
Mon to Sat  
6:00am - 5:30pm  
(7:30pm Wed & Sat)

**Post Office Hours:**  
Mon to Fri  
9:00am to 5:30pm  
Sat 9:00am to 12:30pm





## LETTERS TO THE EDITOR

Dear Editor,

I feel I must acknowledge that my 'Personal Achievement Award' from the British Association of Local History, which you kindly reported in the last edition of WOT, would not have been possible without the huge support I have received from both the committee of Ratby Local History Group and from the many villagers (now over 100 in total) who have contributed articles, memories, photographs and documents to our archive and publications. The work of the 'History Group' is still ongoing and we are now preparing Book 5 which we hope will include articles on Ratby's Bus Services, Ratby's Farms, Sills' Yard, Post Office Yard, Supporting Ratby's Poor: 1834 - 1948 and Ratby School in the 1920s and 30s. We are also preparing an account of 'The History of Ratby' (15,000 words) for the forthcoming 'Victoria County History' of Leicestershire.

If you have memories, photographs or documents which would be helpful to these projects, please contact me on **2394168**.

Yours sincerely,  
**Doug Harwood**  
(Chair of Ratby Local History Group)

## JUBILEE LUNCH

Jubilee weekend was celebrated in style on Sunday 3<sup>rd</sup> June at the Church rooms and was enjoyed by around 50 people. A 4 course meal was provided for some of our elderly or housebound people. A group of singers from the Ratby Girls Brigade Methodist Church entertained our guests. Many of those who attended came in beautiful hats they had made and a prize was awarded to the winner who was chosen by all.

The winner, (Mrs June Sharp) also happened to be celebrating her 91st birthday on the day so it was double celebrations all round.

Although this meal was a little special it is worth noting that we do have a lunch club for elderly or housebound people. This is held generally on the last Sunday of each month from 1pm. **If you would like to attend please contact Joan Hawkins, Tel: 2393130 or Jo Mangham Tel:2395218.** We can arrange transport if you are housebound and have no other means of getting to the Church rooms. This is not a fund raising activity so we do not charge for the meal, however we are grateful for a small donation to help us and make it possible to provide for more people



## JULIE'S HAIRDRESSING MAIN STREET RATBY

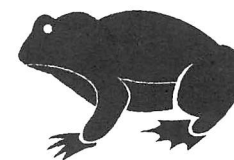
Traditional and Modern Styling  
**Telephone 239 2406**

## A COMMUNITY ORCHARD APPLE

### LORD DERBY

Lord Derby is a traditional large English cooking apple, ripening in the mid-season - early September. It remains a popular apple variety in English gardens, and is a good choice if you are looking for an apple tree for the garden as an alternative to Bramley which can be used in the period from September to November.

Lord Derby is quite easy to identify, on account of its large size, bright green colour and ribbed shape. The Victorian author Hogg rates it as an "excellent culinary apple". The flavour is nicely acidic if picked young, but milder if picked when fully ripe (at which point the skin develops a more yellow hue). Like many Victorian cooking apples, it has naturally good disease resistance.



### POND DIPPING

It looks as though there'll be water in the pond for This year's event on August 15<sup>th</sup>. Meet at the pond For 7 pm - 7.30. Children need to bring an adult. We recommend Wellies!

## MEMORIES of ASTILL'S BUSES

Many years ago when I worked at County Hall (lots of 'girls' from Ratby worked there) we used to catch Astill's bus. What I remember well is that we left work at 4.30pm and had to get across the main Groby Rd to the bus stop. We always went through the underground tunnel. But the driver, Tony, always waited for us. He was so courteous & kind waiting for us, which made such a difference. We were very disappointed when Astill's closed and we had to rely on other buses, which were not as reliable.

**Gwen Holloway**

**That's progress for you. Can't imagine an Arriva bus waiting for you all! Are there any more stories about our local bus company out there? We'd love to hear them. Editor.**



## MELSWAY DRIVING SCHOOL Est. 1991

Mel Shipley D.S.A. A.D.I. M.I.A.M.

Pass Plus Registered  
\*Complete Beginners\* Part trained\*  
Motorway Tuition and Refresher lessons.

Telephone 238 6149  
3 Barton Close, Ratby.



## DEADLINE for issue 155 AUGUST/SEPTEMBER 2012 FRIDAY 13th July

EDITOR 239 3367  
ADVERTS 239 3279  
ARTICLES 239 4873

Articles may be sent to 3 Ingle Drive  
Or Email: [sueboud@hotmail.com](mailto:sueboud@hotmail.com)

Flicker photos by  
Alan Sims.  
Thanks to Dennis!

