

WOT!

About Ratby

PUBLISHED BY RATBY SCOUT GROUP

DRAGONS AND SCORPIONS



There was a great turn out for Ratby Community Orchard's annual pond dipping event on August 8th, with 18 Adults, 10 young people and Jess the dog enjoying an evening of discovery. Intriguing wildlife was also there in abundance.

A first this year were **water scorpions** and a **Miller's Thumb** or **Bullhead**, a small fish found in streams. How did it arrive in the pond?

There were the usual favourites, newts, tadpoles, frogs, damselfly and dragonfly larvae, including the large larvae of the Emperor and Hawker dragonflies. There was an abundance of pond and rams horn snails, water boatmen and pond beetles

As dusk fell the bat detectors came out, and we saw and heard pipistrelle bats.

Neill Talbot of **Leicestershire and Rutland Wildlife Trust** had come along as a volunteer to help us identify our finds. He told us that the presence of fresh water shrimp in the pond was a sign of unpolluted water.

Neill also helped us identify the pond and margin plants. The water level is quite high at the moment, and plant life is abundant, making dipping a challenge!

Many thanks to Neill for his help and enthusiasm. If you are interested in our local wildlife why not join the Wildlife Trust? You will receive fascinating newsletters and a guide to the many sites the

RTV of Ratby SALE now on

LG42" Plasma TV	£999.99
Panasonic TH37PX70 Plasma	£999.99
SONY KDL26P2530	£579.99
Dyson DC07 Animal	£249.99
Toshiba DVD Recorder DR160	£139.99
BOSCH 1600 spin WFR3268B	£499.99
Hotpoint WF321P Washing m/c	£299.99
Beko DWD4310 dishwasher	£199.99
Creda TR322 Dryer	£139.99
BOSCH KTR15V refrigerator	£199.99

Prices include local delivery

And many more offers!

Call 0116 2394544 now!
Or visit our showroom at
23-27 Station Road, Ratby

**NEWS FROM ST PHILIP
AND ST JAMES.**

'Wow' I think that's the only way to sum up June here on the hill. First of all we had a fantastic garden party at the Rectory on 23rd June. Over 600 people came along from the village to enjoy the fun on one of the few sunny days in the month. It was great to see so many of you.

On the following Saturday our curate, Revd Anne Stratton was ordained priest in a packed cathedral. It was a wonderful service and it was appreciated that there was a large contingent from Ratby there to support her. This was followed by a party back in the Church Rooms. Finally, our parish website which covers Ratby, Groby and Newtown Linford got under way. Those of you with internet access can now go to www.bradgateteam.org.uk and see just what's happening. It's being updated all the time so you'll need more than one visit. It's got details of services, events, staff and news from some of the church groups. Mind you, we'd appreciate your actual presence at church rather than a virtual one any time. Roll on July for a rest !!

A. GOODWIN
CARPENTRY, JOINERY &
PROPERTY REPAIRS

0116 2387316 OR
MOBILE 0777 987 2211

FITTED KITCHENS, BEDROOMS & BATHROOMS

PLUMBING

TIMBER & UPVC WINDOWS / DOORS &
PORCHES

FENCING & GATES

DECORATING, FLOOR & WALL TILING

PLASTERING & COVING

FASCIAS / SOFFITS & GUTTERING

SOLID & LAMINATE FLOORING

RADIATOR COVERS

PLUS ALL PROPERTY MAINTENANCE & REPAIRS

NO JOB TOO SMALL

VILLAGE SOCIETY NOTES

Mike Hine, born and bred in Devon, now living in Lincolnshire, spoke at our June meeting on "Woodturning". He told us how he had first come to love trees and wood on his grandfather's farm and later began to explore the possibilities of wood-turning. He described every bit of wood as "a little bit of sunshine", one of the essentials needed for any sort of growth. The range of colours and patterns in the different local English woods that he uses is remarkable. His wood comes from a variety of sources - from an old oak in the middle of a field, hindering modern farming methods, to an ash whose roots were threatening a Chapel building and cherry trees grown too big for a small garden. After being cut into planks, most wood takes one year for every inch of its thickness, to dry outside and as much time again inside. Lack of proper seasoning leads to warped plates and bowls!

Mike demonstrated the use of his lathe, producing a small vase, after making sure that there was a sweeping brush handy as the pile of saw-dust increased. With his wife, Gerda, he showed us beautiful and varied examples of his work, made from laburnum, yew, box, oak, ash, elm and many more, all with their distinctive patterns. They were smoothed either with a liquid friction polish or beeswax and were lovely to feel when passed around. Mike could obviously see the object that was "hiding" inside each piece of wood as he worked it to produce delightful objects, decorative and useful, for the home.

**RATBY RAMBLERS ON
HOLIDAY**

On Tuesday 22nd May we went on our first walking holiday, staying at Willersley Castle Hotel in Cromford, Derbyshire. A 200 year-old Grade 2 Listed building, commissioned by Sir Richard Arkwright, the industrialist, it makes an ideal base for a walking holiday.

Eight members of our group enjoyed some wonderful walks, exploring the beauty of the area. We visited The Heights of Abraham, Chatsworth House and Gardens, and Arkwright's Mill, with its Craft and Coffee shops.

The good weather rounded off a happy and memorable holiday for us all.

Jill Grey.

Ratby Ramblers enjoying the Derbyshire sunshine.



Porter's Discount Carpets

121/3 STATION ROAD, RATBY

TELEPHONE 239 3238 or 239 5202. MOBILE 07860 551142

QUALITY AT THE
RIGHT PRICE

SHOP AT HOME
SERVICE



ask for it by name!

Laminated Flooring

FREE FITTING
ON ALL CARPETS
EXCEPT REMNANTS



GEORGIAN
CARPETS

RATBY CHEMIST LTD.

58 MAIN STREET LE6 0LL

*FREE PRESCRIPTION COLLECTION
SERVICE! *

From surrounding surgeries.
JUST PHONE US ON 239 3139 with your
requirements. We will process your
prescription with the surgery.
All you do is COLLECT IT from us, or we can
deliver to your home if needed.
You can e mail us with requirements;
Ratbychemistltd@aol.com

THE SERVICE GARAGE

MAIN STREET, RATBY

M.O.T TESTS

CARS (PETROL and DIESEL)

M.O.T. HOURS 9.00-4.15 Monday-Friday

Closed for lunch 1-2

TELEPHONE 239 4966

RATBY PARISH COUNCIL

Vegetation

Thank you all for your reports about vegetation which needs a trim.

The unusually high rainfall certainly encouraged rapid growth! At the same time RPC's contractor withdrew from the mowing contract. So, there was a short pause in activity. However, the matter is resolved by the appointment of a different contractor who has already, as we write, started the catch up process in the areas for which RPC is responsible. By the time you read this the village's green areas should be looking good again.

The footpath along the old railway line from Station Road down to Taverner Drive, and on towards Glenfield, is the responsibility of the County Council. Part of it did become impassable for a while so the CC brought forward its mowing schedule and the Comet Trail is open again.

Basket case

Following a number of costly repairs the basket swing on Ferndale Park has been damaged again. This super facility was probably strong enough for its purpose, but it was unable to withstand the treatment it received from certain people. Therefore, in the interests of public safety, it is to be removed.

Route 27

No more hail and ride on route 27. Keep a look out for the poles and flags ('bus stops to you and me) which will soon be appearing at interesting places along the route. A list of probable sites is available for inspection in the Ratby Parish Office.

"Everything From A Blown Fuse To A Complete Rewire"

PAULS QUALITY ELECTRICS

Your Local, Fully Qualified City & Guilds
ELECTRICIAN



Upgrading Old Fuse Boxes - Rewires - Alarm Systems
New Sockets & Lighting - All Domestic & Commercial Electrics

Call Paul Rumble on: (0116) 2872338

NEWS FROM OUR COUNCILS

Keeping the Peace

Drink related incidents continue to happen on the parks and other open spaces of the village. We are aware that many of you are suffering from disturbed nights because of this. RPC is working with the police and other agencies with the objective of clearing this problem out of our village. Meanwhile, RPC will endeavour to keep the play areas free from glass on a daily basis and is grateful for those public spirited villagers who regularly collect cans and bottles from the parks.

Please be vigilant and report any drink or drug related incidents to the police on 222 2222 including as much detail as you can. (note: HBBC has not signed up to 101 so we MUST continue to use 222 2222 whatever the operator says!)

Finally, the good news is that Ratby has a new beat officer. He takes up his duties on 30 July 2007. There will be no ceremony so it's up to you to make PC 344 JUSTIN HAYES truly welcome.



PABARI'S RATBY NEWS

5 STATION ROAD RATBY
0116 239 3287

For the Largest Selection in Ratby of
BEERS WINES and Spirits

**A VAST CHOICE OF CONFECTIONERY &
SOFT DRINKS**

**A LARGE VARIETY OF GREETING CARDS,
WRAPPING PAPER and STATIONERY**

**NEWSPAPERS and MAGAZINES
DELIVERED TO YOUR DOOR DAILY**

**We are Agents for
SKETCHLEY DRY CLEANING**

Video rental and Photocopying
OPEN Monday-Friday 6.15-1pm. 2.30-10pm
Saturday 6.15-10pm

BOROUGH COUNCILLORS REPORT

We are both very concerned with the amount of anti-social behaviour that Ratby has been experiencing over the past 6 to 8 weeks. All this behaviour is being fuelled by alcohol. There is a small hardcore of older youths aged 18/21 years who should be acting like adults but are mixing with and supplying younger, under age teenagers with alcohol, and encouraging them to get drunk.

We have been liaising with the police to get better cover to deal with these problems. The new toddler play area which was only opened at the end of May has suffered at the hands of these youths. The toddler area is designed for small children aged 2 to 8 yr old only. The youths have broken the basket swing on several occasions. We felt the situation was so serious that we have made a request to the Borough Council to adopt alcohol free zones in parts of the village that are suffering the worst behaviour. The Parish Council backed this request 100%. If brought in this, will give the police greater powers to stop drinking in these areas.

Since that request we have had a meeting with representatives from the police, Hinckley & Bosworth Council's Anti Social Behaviour officer, the County Council's Detached Youth Worker Service and the Parish Council. We have formed a strategy and have taken the view that serious measures needed to be put in place. We hope that by the time you read this the problem will have improved and hopefully resolved, so that people can go to the parks and catch the bus without the thought of being intimidated by drunken youths.

We all hope that you realise this is a small group of youths who are causing residents anti social behaviour, so please do not tar all young people with the same brush.

We also ask a question of the parents of these youths, what are you doing to help your children? You must see them coming back in this state. You have a duty of care to your child and also the community. If you need help in any way then please contact us. We can always put you in touch with agencies that can assist

Dial A Ride Community Transport Social Car Schemes.

This is a service for people who have difficulty using public transport. If you are unable to use public transport or have no relatives or neighbours to offer help and simply want to get out and about to visit friends & relations, health & hospital appointments, essential shopping, or visit the hairdressers, then this service could help you. This is a local voluntary service. Fares are no more costly than a bus fare and if you have a pensioner's bus pass you will qualify for half the fare.

The service is run by local volunteer drivers who offer door to door service all you have to do is register with Dial A Ride by telephoning **01455 250462**. Then, once registered, give them a minimum of 2 days notice of your journey by calling them on the same number. For more details give Dial a Ride a call on **01455 250462**. Leaflets are available from ourselves or the Parish Council offices.

Ozzy O'shea
Tel 0116 2394336
07808 585825

Chris Boothby
Tel 0116 2388301
07704 345637



A MESSAGE from NEIGHBOURHOOD WATCH and your LOCAL POLICE

'Junk mail still in a letter box, windows or doors obviously not been opened for a few days, curtains not moved, no lights, no noise, no car on the driveway. A spade for lifting patio doors left leaning up against garage. Front garden untidy, bin still in the front garden....and empty. Think I'll go in there tonight, they must be due back soon.'

This is how your potential burglar might be thinking.

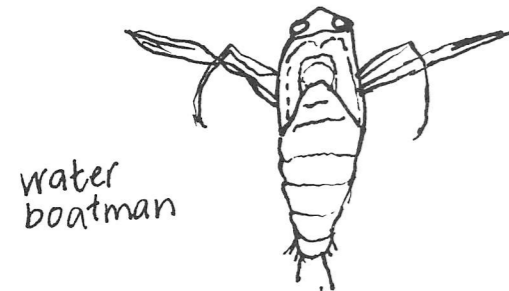
GOING AWAY?

Ask a neighbour or friend to keep your property looking lived in.

'If I'm not sure whether you are away or not I won't risk breaking in!
Before you go away think like me and thwart me!'

Why not join your local Neighbourhood Watch group?

Call the Parish Council Office on 239 0167 or 239 5001 and leave your details. Someone will get back to you.



LETTER TO THE EDITOR

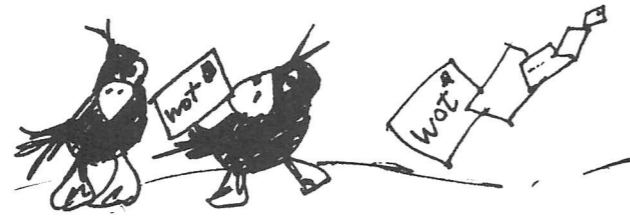
Dear Editor

We strongly endorse the request from Polly Robinson-Gill in her letter to the Editor (April/May issue). Polly encourages all those in our public life to refrain from back-biting and griping and to start developing a positive relationship between our Parish Council and the residents of Ratby.

There are many constructive activities contributing to the richness of our village life and all those involved need to be encouraged and commended – this is the example we should be setting to our children.

Jack Haywood
Chairman, Ratby Village Society

This letter was received too late for the June issue, but we print it here for the positive thoughts. Editor.



L **MELSWAY DRIVING SCHOOL**
Mel Shipley D.O.T. A.D.I. M.I.A.M.
All ages welcome....and nervous pupils.
Learn to Drive with MELSWAY. Est. 1991
Telephone 238 6149
3 Barton Close, Ratby.

JULIE'S HAIRDRESSING
MAIN STREET RATBY
Traditional and Modern Styling
Telephone 239 2406

GOING WILDLY WICKED

Anyone aged between the ages of 11 and 20 is being urged to go "wildly wicked" this summer with a prize winning photography competition.

Leicestershire County Council's Community Heritage Initiative is inviting entries on the theme of answering the question "What matters to you about your natural environment?" Photos can include the area where you live, wildlife, favourite natural place, or a record of our impact on the environment such as climate change, graffiti, pollution and recycling.

Prizes on offer include £100 music store vouchers and entries can be sent by text, post, email or be dropped off at local libraries.

The closing date for entries is 31st October 2007.

For details of how to enter and a copy of the entry form, email wildlywicked@leics.gov.uk, go to www.leics.gov.uk/wildlywicked or telephone CHI on 0116 267 1377



A.H. COLEY
Plumbing and Heating Repairs
New Installations, Bathrooms, Showers

For a full range of Services contact;
4 Saxons Rise
RATBY LE6 ONF
Telephone 239 4277

GAS APPLIANCE SERVICES

- Appliance Servicing and Installation
- Breakdown and Repair Services
- Plumbing and Heating Installation
- Kitchen & Bathroom Design and Installation
- Quality Guaranteed by Experienced Engineers

YOUR DOMESTIC GAS BOILER SERVICED £30 + Vat

6 SAXONS RISE, RATBY, LEICS. LE6 ONF
■ Tel: 0116 2393662

DEADLINE for issue 126 OCTOBER/NOVEMBER 2007 FRIDAY 15th SEPTEMBER

EDITOR 239 3367
ADVERTS 239 3279
ARTICLES 239 4873
Articles may be sent to 3 Ingle Drive
Or Email: sueboud@hotmail.com

OAKLANDS RIDING SCHOOL

WE CATER FOR EVERYONE FROM
THE NOVICE TO EXPERIENCED RIDER
All weather riding area
Ring Julie on 238 7570

BATTERIES & STRAPS

FITTED WHILE YOU WAIT

ALL BRANDS

SYKES JEWELLERS

8 Bradgate Road, Anstey
Tel: 0116 236 2510
www.sykesjewellers.co.uk

HIS and HERS

LADIES AND GENTS HAIR DRESSING
OAPs REDUCED RATES
Appointments not always necessary.

156 STATION ROAD, RATBY
239 4429