

APRIL/MAY 2012

ISSUE 153



WOT!

About Ratby

PUBLISHED BY RATBY SCOUT GROUP



LEICESTER'S LORD MAYOR REVEALED

Faye Stephens introduced a Ratby Village Society audience to special guest Councillor Robert Wann who had been invited as part of the group's regular series 'Personalities Revealed.' The evening was raising money for The Royal Anglian Benevolent Charity (RARBC) which Councillor Wann has chosen as the beneficiary for fund raising during his term in office. Special visitors included Jeremy Prescott of the Royal Anglian Regiment, and Helen Gray, mother of Ratby Hero Chris Gray who was killed in action whilst serving with the regiment.

Andy Cereseto conducted a lively interview with Robert Wann, and we learned a good deal about life as a Lord Mayor. We heard how Robert Wann had entered into politics and his many roles as a longstanding Councillor. He told us that his favourite role had been the nine years he spent as Chairman of the Police Authority. We gained an insight into his many varied interests including running a pub and riding with the Atherstone Hunt. During the question and answer session he affirmed his enthusiasm for the voluntary sector and his support for the maintenance of green wedges. A cheque for £250 was presented to The Lord Mayor for the RARBC, and he was then invited to draw the tickets for the raffle.

An apology for the mislaying of the photograph we took for this article.

Turn to page 6 for information about the Village Society's Coming events and date for this year's Ratby Show!



RATBY DIAMOND JUBILEE DAY
4th JUNE 2012



At **RATBY SPORTS CLUB** FROM 2-5PM

Plus Beacon lighting on the Church Tower between 10 and 10.50pm.

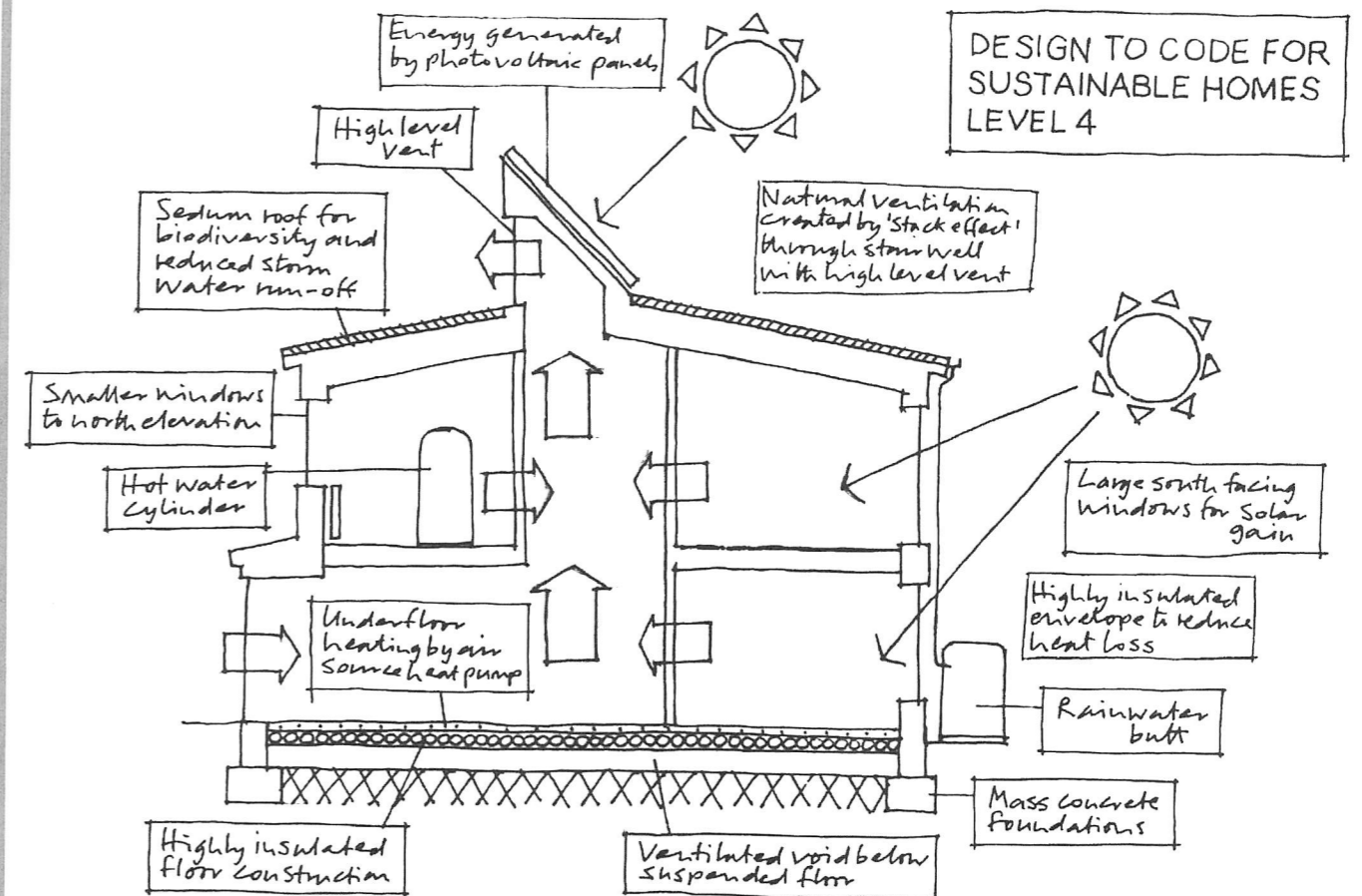
Ratby village groups are planning the above event and hope that all the residents will join in the celebration and fun.



FIELDING MEADOW

OFF FIELDING LANE, RATBY, LE6 0AS

New Showhome open 12-4pm Friday, Saturday & Sunday



FUTURE HOMES – AVAILABLE NOW

For further details please contact:
Cawrey Limited, Kirby Grange Farm, Taverner Drive, Ratby, Leicester, LE6 0HQ

Tel: 0116 239 0600

www.cawrey.co.uk
enquiry@cawrey.co.uk

Ratby Pondemonium

Do you have a garden pond? Ratby-based charity NatureSpot is collecting records of the amphibians that are attracted to garden ponds and would like hear from anyone who has Common Frogs, Smooth Newts or Toads in their garden.

Many ponds in the countryside have disappeared and garden ponds now provide very important homes for some of our native amphibians. Common Frogs are the least fussy and will often lay spawn in any body of water – a sunken bucket or even a puddle can attract them. Smooth Newts are more particular but once they take a liking to a pond they will usually come back every year. They will eat frogspawn and tadpoles so sometimes frogs avoid newt ponds. Toads are uncommon in garden ponds as they prefer deeper water – but they sometimes occur.

To tell us about the amphibians visit your garden, visit www.naturespot.org.uk and use the Submit Records form. If you need help, email info@naturespot.org.uk.

The Ratby NatureSpot pages launched a few months ago now show that 880 different species of wildlife have been recorded from the parish. Why not add your wildlife sightings to the list? Just visit www.naturespot.org.uk and to see the Ratby page, follow the parish menu.



Ratby Post Office & Newsagents

- ✓ Passport Check & Send
- ✓ Digital Photobooth
- ✓ Travel Money & Insurance
- ✓ Personal & Business Banking
- ✓ Insure your Life, Car, Van, Motorcycle, Home or Pet
- ✓ Post Office Credit Card
- ✓ Homephone or Broadband
- ✓ Bill Payments
- ✓ Rod Fishing Licences
- ✓ Many Other Post Office Services

30 MAIN STREET, RATBY, LEICS
TEL: 0116 2393001

Large selection of Papers, Mags, Tobacco, Confectionery, Gifts & Greeting Cards etc.

Shop Hours:
Mon to Sat
6:00am - 5:30pm

Post Office Hours:
Mon to Fri
9:00am to 5:30pm

RATBY VILLAGE FETE & FUN RUN

The Annual Village Fete organised by Ratby Parish Church is scheduled for 23rd June It will be held in and around the Church Hall and gardens. There will as usual be lots of stalls, family games, live music from Ratby Junior Band and 2 B dancers as well as the tea room where you will be able to get a lovely cup of tea and some delicious home made cakes. In celebration of the Olympics the fete will have a very definite Olympics theme with mini Olympics for the children.

We are excited to announce that this year we have applied to hold Ratby's first fun run (The John Day 5k). There will also be a mini run for younger children.

We want to make this a real village event with lots of runners from the village, Look out for application forms around the village or alternatively contact Joan Hawkins tel: 2393130 email jvajhawkins@hotmail.co.uk or Jim Milner tel:2386334 email ; jimmilner@talktalk.net

We need a team of Marshall's to help us on the day. If you would be willing to help out please contact Joan or Jim. Thank you

RATBY CHEMIST LTD.

58 MAIN STREET LE6 0LL

***FREE PRESCRIPTION COLLECTION SERVICE! ***

From surrounding surgeries.
JUST PHONE US ON 239 3139 with your requirements. We will process your prescription with the surgery.
All you do is COLLECT IT from us, or we can deliver to your home if needed.
You can e mail us with requirements;
Ratbychemistltd@aol.com

HIS and HERS

LADIES AND GENTS

HAIR DRESSING

OAPs REDUCED RATES

Appointments not always necessary.

156 STATION ROAD, RATBY, LEICESTERSHIRE, LE12 6JG

POLICE – HERE TO HELP

PCSO 6552 Mo Musa. I am your local Police Community Support Officer; I work with PC 334 Justin Hayes and other Police Officers from the Market Bosworth Police station. Our main aim as a team is to try and make Ratby and the surrounding villages safer places to live and work. Our aim is more achievable when working alongside the local residents and community members of the villages.

Crime prevention advice - Most crime is preventable. It can take as little as 10 seconds for a thief to steal something from your car.

NEVER leave valuable items in your car, including mobile phones, the removable radio cover or your Sat Nav. If you do have a Sat Nav always wipe away the mark on your windscreen. Never leave your car keys where they can be seen from the front door or near open windows. Whenever you leave your homes empty then always make sure you have secured and locked all doors and windows. If you have a house alarm, then remember to activate it.

Anti-tamper screws for your number plate

Towards the end of last year the Police teamed up with the Ratby Neighborhood Watch and together we supplied and fitted anti-tamper screws for the local residents at no cost. If anyone requires a set of these screws I still have a batch left with me and am happy to deliver to local residents.

Anti-social behaviour has been an issue, and on speaking with youths they state that they don't have much to do in their villages. However Ratby has since the start of this year begun a Youth Club in the village every alternate Friday, where the young can gather and take part in indoor and out door activities of all kinds and even meet with Police and Community Support Officers and maybe get us involved in some games too. For more information on the Ratby Youth Club, you may contact myself or speak with Linda Fogg at the Ratby Parish office.

If you see me in or around Ratby then feel free to stop me for a chat. If there are any concerns or issues you may have I will be happy to listen and will try my best to help you resolve them. You can contact your local police on **101** for non-emergencies and **999** in an emergency.

I look forward to seeing and speaking with community members in the near future, if you need to contact me, to leave a message my collar no. is **6552** or you can e-mail me on mohammed.musa@leicestershire.pnn.police.uk



RATBY METHODIST CHURCH

Thank you to all the 'Wot' readers that helped the Ratby Methodist Church to enjoy and share their centenary. Now we look forward to the future by inviting you to come and sample what we have on offer with our Church's activities.

Sunday We have morning worship and a Junior Church at 10am. Evening worship is every third Sunday of the month.

Monday is 'Monday Circle', usually at 2.30pm. This is a social group that could be described as a youth club for older folk. With quizzes, trips out etc., for you to enjoy. They do not meet on the first Monday of the month as at 7.30pm it is the 'Ladies Circle' with activities such as speakers talking on various issues; Gypsy life, Women's refuge and Street Pastors. They also have themed nights. Any lady is more than welcome

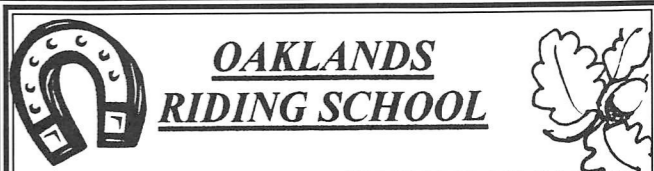
Tuesday At 10am in one of the members homes. People meet for Bible, Faith and Fellowship. **Tuesday evening** the Girl's Brigade meet during term time at 6pm.

Wednesday 'Women's Own' meet once a fortnight at 3pm. with a little service, and then a speaker. All ladies are more than welcome.

Thursday Usually the last Thursday of the month there is a luncheon club at 12.30pm. Serving delicious, reasonably priced meals.

Saturday Coffee Morning once a fortnight, from 10am to 12noon. We alternate with the Parish Church. Both of us also have a book stall and one for knick knacks. We also utilise these Saturdays for other events such as our April Fayre on the 28th from 10am to 1pm.

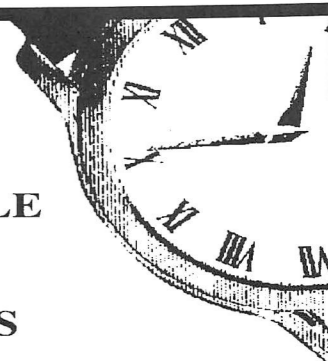
We look forward to these events continuing for another 100 years!



OAKLANDS RIDING SCHOOL

WE CATER FOR EVERYONE FROM THE NOVICE TO EXPERIENCED RIDER

All weather riding area
Ring Julie on 238 7570



WATCH BATTERIES & STRAPS

FITTED WHILE YOU WAIT

ALL BRANDS

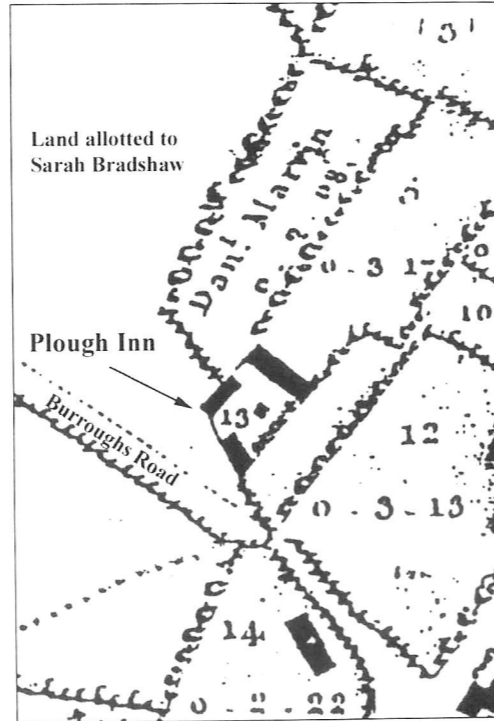
SYKES JEWELLERS

8 Bradgate Road, Anstey
Tel: 0116 236 2510
www.svkesjewellers.co.uk

**RATBY HISTORY SOCIETY
STORIES BEHIND THE
VILLAGE NAME PLAQUES**

The Stattie: is the local name for the footpath which runs from Stamford Street to Burroughs Road. The name derives from the former role of the present Plough Inn Car Park, as the "Statute Craft", meaning "the field (i.e 'craft') where the 'statute', authorising the hiring of farm labour, took place following the Ratby Enclosure Act of 1770. The path ran diagonally across the field allotted to Daniel Marvin (see map), then owner of the alehouse now called the Plough Inn. It was part of the 1770 Enclosure Award in which it was described as "a private horse, cart, carriage and drift way" should be "set out for a space of 60 yards from the gate or gateplace in the fence between the Town Street of Ratby...and the said land allotted to...Sarah Bradshaw"... and then into and over that land in a northward direction into the land hereby allotted to...Daniel Marvin for the sole use of him and owners and occupiers of the said land...(now the Plough Inn Car Park)...for the time being for ever". The Plough Inn and its 'statute craft' became a regular venue for Ratby's auctions and fairs.

Map: Enclosure Map of Ratby, 1773, showing Danl. Marvin's land and alehouse.



COMMUNITY ORCHARD

Forthcoming **FREE** events include:

Apple Blossom Picnic, 1pm on April 29th at the Orchard on Taverner Drive. Bring your own picnic and join us. (subject to weather!)

Ratby Diamond Jubilee Day June 4th. Come along and join in with our apple themed games and activities.

Pond Dipping at the village pond, Taverner Drive. 7 pm on Wednesday August 15th. Don't forget to wear your wellies and bring along a net and white plastic tub for collecting. Subject to there being water in the pond.

Apple Day event. Apple tasting and juicing. At the Orchard on October 14th. More information in a later article in Wot.

Established 40 Years.

Glenfield Electronics

- Digital Aerials Fitted *retra*
- DIY Aerial Supplies
- LCD & Plasma service

We fit phone extension points

Tel: 0116 2517 533 www.glenfieldelectronics.co.uk

A RATBY CHILDHOOD
Part two of David Jones memories

I remember fondly the shed we had. It was used by Uncle Jack who did shoe repairs. An old apple tree stood behind it and to the left was a path made from all the cinders raked from the coal fire. This led to a well looked after vegetable garden. There was a wired area at the bottom where we kept hens. A nice little stream ran along here, where watercress grew freely. We used to go to pick this to eat for tea.

Crossing this stream on two railway sleepers, and going through a large gate in a hedge would lead me and my friends into a different world. Here we would find the large shed where Uncle Jack kept his prized rabbits for showing locally. There was another large wired off area where geese, hens, bantams and ducks all roamed freely. Another shed was filled with homing pigeons belonging to Mum's brother Uncle Albert. He also did a round, selling food of all kinds to the local residents. He started with a lorry, but later had a single decked bus. And so yet another shed was put on the land to house his goods and vehicle.

There was also a large brick building called the stable. I can only remember it housing two large pigs. These were eventually killed for meat and sausages. I remember clearly how this building was built, just laying the bricks one on top of the other, without mortar being used. Yet it stood for many years.

There was a lean-to shed on the side of the stable which housed a horse drawn carriage. We used to get in there and pretend it was a stagecoach. There was a shed with horse tack, old oil lamps, horse leathers etc. We had such fun times playing in there.

Beyond this area was an old clay pit which had become little ponds full of bulrushes, dragon flies, newts, frogs, rabbits, as well as many species of birds, ant hills and mole hills.

People used to dump all sorts of stuff here, which made it a more interesting place to play. It became the adventure playground for local children. Here we became Tarzan, a cowboy or Indian playing in what we called our jungle or forest, acting out our fantasies from films we had seen and books we had read.

The road to this old clay pit was Brickyard Lane then. It is now Centurion Court, and comes out on Station Road.

When I think back to my childhood days almost seventy years ago I remember such happy, carefree times which most children today will never be able to enjoy.

**DEADLINE for issue 154
JUNE/JULY 2012
FRIDAY 18th May**

EDITOR 239 3367
ADVERTS 239 3279
ARTICLES 239 4873
Articles may be sent to 3 Ingle Drive
Or Email: sueboud@hotmail.com

FOUND !

In gutter on Church Lane
A PAIR OF GLASSES
With Reddish coloured frames
Please ring 01530 242064

Your hosts,
Jon & Kerry
welcome you
to...

The Nag's Head,
Station Road, Glenfield 0116 287 2794

Fantastic Food Offers

SPECIAL SUNDAY LUNCH OFFER - £3.95 for a small Roast Dinner every Sunday throughout March & April between 12 & 1pm only (excludes 18th March and 8th April)

Homemade Lunch Time Menu £3.95

Add a bottle of house wine to ANY 2 main meals for just **£6.00!**

2 for £10
Mon-Sat 12-2.30 & 6-9

Sunday Lunches 3 Meats, 3 Sizes all with our home-made Yorkie Puds and REAL Gravy
Booking Advisable

Broken Games Console?

We specialise in repairing OUT OF WARRANTY consoles via our cost saving drop-in service.
IT'S EASY call 0116 286 6447 or find us at the address below.

Once we've given you a quotation we'll get on with the repair and when we've finished you simply collect your console and pay!
www.ipaqrepair.co.uk

We repair the following...
**PlayStation 3 • XBOX 360 • PSP
Nintendo Wii • Nintendo DS**

Also... **Smart Phones
iPhones • iPod Touch**

5% discount with this advert

CONSOLE CLINIX

IPhone & iPods Parts & Repairs

Unit 33, King Street Buildings
Enderby, Leicester LE19 4NT

YOUR LOCAL ELECTRICIAN

PAULS QUALITY ELECTRICS

"Everything From A Blown Fuse To A Complete Re-wire!"

TRUST MARK (Electrical Contractors Association)

- Fuse Box Upgrades, Extensions
- Sockets, Lights, Heating, Fans, TV etc
- Burglar Alarms & Security Lights
- Safety Inspections, Landlord Reports
- Fault Finding, Testing & Repairs
- Also Property Maintenance.

APPROVED CONTRACTOR

Call Now For A **FREE Estimate!**
Office: (0116) 2872338 Mobile: 0798 0911 869



Pabari's Ratby News. (Est. 25 years)

5 Station Road, Ratby, Leicester. LE6 0JQ.
Tel: 0116 239 3287.



We Deliver Daily, Evening & Sunday Newspapers.

A wide choice of Magazines, Greeting Cards & Stationery.



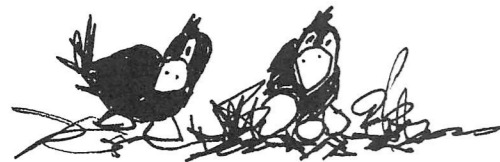
Sweets, Confectionery, Tobacco, Soft Drinks & Milk.

Top Up Your Mobile Phone, Electric & Gas.

A Vast Selection of Beers, Wines & Spirits

Play The National Lottery Here **Now!**

Opening Times:-
Mon-Fri :- 5.00am to 1.00pm, then 2.30pm till 10.00pm
Sat:- 5.00am through until 10.00pm
Sun:- 7.00am to 2.00pm, then 7.00pm till 9.00pm



RATBY VILLAGE SOCIETY

Meetings start at 8pm in the Village Hall, Main Street on the third Tuesday monthly. Admission; Members £1.60, casual guests £2.50 refreshments included. All welcome.

Tuesday 17th April- This is one meeting no-one should miss. 'The Secret Diary of Susiecue aged 65 3/4'

Tuesday 15th May- A talk by Mrs Taylor entitled 'Post Office Patter.' The goings on in a Post Office from the other side of the counter.

Tuesday 19th June- A friendly 'able Quiz' with a Royal Jubilee theme to celebrate the 60th anniversary of the Queen's accession to the throne. Wear your glitz and glamour for this one! Bow ties and tiaras and anything else you can think of to celebrate this once in a lifetime occasion.

Diamond Jubilee Day... look out for our table of artefacts at the Ratby event on 4th June at the Sports and Social Club. A wonderful afternoon for all the family to enjoy.

SUNDAY LUNCH CLUB RATBY CHURCH ROOMS

In October we launched our lunch club in the Church rooms. Sunday lunch has traditionally been a family occasion but it can be a very lonely time for some people so we thought it would be an opportunity for us as a church to offer a hand of friendship to elderly or disabled people and also to those people who live alone, by inviting them to join us for a three course meal.

We do not charge anything for the meal as this is not a fund raising initiative however we do appreciate a small donation to help towards the costs of providing the food. Currently we have 29 people on our list but we would like to increase the numbers of people attending. The lunch club meets on the last Sunday of each month.

Thanks to our fabulous volunteer drivers we can provide transport for those people who are unable to get to the Church Hall themselves.

If you would like further details or would like to book a place please contact **Joan Hawkins (Pastoral Assistant at Ratby Parish Church)** Telephone 2392130

Email- jvajhawkins@hotmail.co.uk

LETTERS and ARTICLES
We welcome letters and articles, but reserve the right to edit them or deny publication. Your name and address must be supplied, but you may ask for them to be withheld. Views expressed in articles and letters do not necessarily represent the views of the Publishers. We cannot be held responsible for information in advertisements, which we accept in good faith.

YOUR LOCAL CAB COMPANY NOW AVAILABLE

GROBY CABS

LOCAL & LONG DISTANCE
ANYTIME ANYWHERE

AIRPORT TRANSFERS
E.MIDS = £20.00

PHONE:

0116

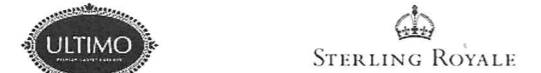
2 31 22 14

Porter's Discount Carpets

121/3 STATION ROAD, RATBY

TELEPHONE: 239 3238 OR 239 5202. MOBILE: 07860 551142

SHOP AT HOME SERVICE



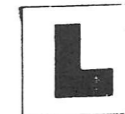
NOW INCLUDING L.B.P. Tiling SPECIALISTS IN CERAMIC AND PORCELAIN TILING

MELSWAY DRIVING SCHOOL Est. 1991

Mel Shipley D.S.A. A.D.I. M.I.A.M.

Pass Plus Registered
Complete Beginners Part trained*
Motorway Tuition and Refresher lessons.

Telephone 238 6149
3 Barton Close, Ratby.



JULIE'S HAIRDRESSING MAIN STREET RATBY

Traditional and Modern Styling
Telephone 239 2406

★ **A. GOODWIN** ★

**CARPENTRY, JOINERY
And PROPERTY REPAIRS**

**0116 238 7316
Or mobile 0777 987 2211**

FITTED KITCHENS/BEDROOMS,
BATHROOMS.
PLUMBING

TIMBER & UPVC WINDOWS, DOORS
and PORCHES

FENCING and GATES
DECORATING, FLOOR and WALL TILING

PLASTERING and COVING

FASCIAS, SOFFITS and GUTTERING

SOLID and LAMINATE FLOORING

RADIATOR COVERS

**ALL PROPERTY MAINTENANCE and
REPAIRS
NO JOB TOO SMALL**

★