



# Wot!

## About Ratby

ISSUE 75

PUBLISHED BY THE RATBY SCOUT GROUP

APRIL 1999

### BROOKVALE GETS TOP MARKS AGAIN!

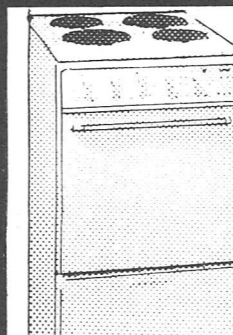


There's a lot to smile about at Brookvale High School, Groby, these days. Last week saw the publication of the school's latest OFSTED inspection report, and it couldn't have been better.

After their last inspection in 1994 Brookvale appeared in the Governments top 100 of Good and Improving schools. With this report looking even better, Richard Mapp, Acting Headteacher, has good cause to be delighted - "This excellent report reflects our commitment to continuous improvement" - Richard said today.

AT YOUR LOCAL **EURONICS** CENTRE

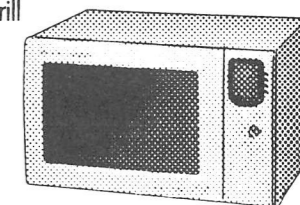
## THE LOWEST PRICE ON THE BEST BRANDS



**Creda Cadenza Cooker**  
 ■ Easyclean 4 Sealed Plate Hob  
 ■ Large Conventional Oven  
 ■ Credaclean Oven Liners  
 ■ Separate Full Width Grill  
 Model 49120

**£ 229.99**

**Sharp LCD Combination Oven**  
 ■ 900w Microwave ■ 1200W Quartz Grill-  
 ■ 800w Bottom Grill  
 ■ 1300w Convection Grill  
 Model R-891

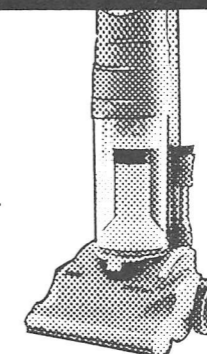


**£ 299.99**

#### Dyson Upright Dual Cyclone Vacuum Cleaner

■ Bagless Cleaning System  
 ■ 5 Stage Filtration  
 ■ On Board Tools  
 ■ 1200w High Efficiency Motor  
 Model DC01

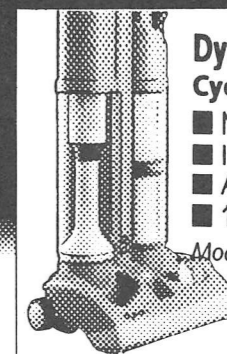
**£ 189.99**



#### Dyson Upright Dual Cyclone Vacuum Cleaner

■ No Loss of Suction  
 ■ Ideal for Allergy Sufferers  
 ■ Adaptive Brush Control  
 ■ 1200w High Efficiency Motor  
 Model DC03

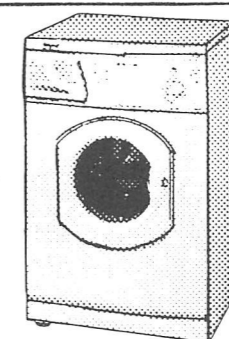
**£ 249.99**



#### HOTPOINT 'Aquarius' Washing Machine

■ Intelligent Care System  
 ■ 1000 Spin  
 ■ Aquarius Wash System Plus  
 ■ Super Rinse  
 Model WM62

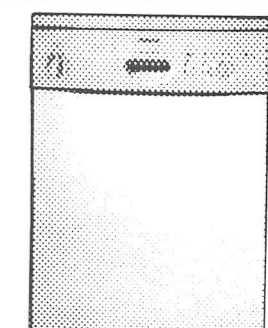
**£ 299.99**



#### HOTPOINT 'Aquarius' Dishwasher

■ 12 Place Settings  
 ■ 4 Programmes  
 ■ 3 Wash Temperatures  
 Model DF61

**£ 349.99**



We are an independent retailer – with friendly local service and personal attention – but we're also members of EURONICS – Europe's biggest independent electrical buying group, which means we can offer you the very best deals on the highest quality brand names!



23-27 Station Road, Ratby,  
 Leicestershire LE6 0JQ  
 Tel: Leicester (0116) 2394544



- TOP BRANDS AT LOW PRICES
- SPECIAL OFFERS
- LOCAL DELIVERY
- GUARANTEED AFTER SALES SERVICE
- EXPERT STAFF



### CENTRE

YOU CAN TRUST EUROPE'S BIGGEST INDEPENDENT ELECTRICAL BUYING GROUP

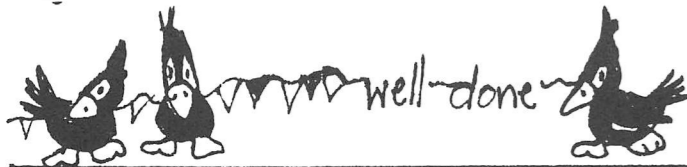
*Discover the Difference*

## BROOKVALE GETS TOP MARKS AGAIN!

Ofsted concluded that the overall quality of teaching was good, with at least a quarter of the teaching being very good. The Inspection Team praised many features of life at Brookvale, particularly mentioning high levels of student attainment, a wide range of clubs and societies including sport, the promotion of strong social and moral values, high levels of attendance, very good support and guidance for students and strong links with the local community.

Students at the school are, in Ofsted's words, "busy working hard, enjoying life and (most importantly) striving to succeed".

But Brookvale is not a complacent institution, as Richard says, "As a community we will reflect on the praise we've received for our lively and effective teaching, and our commitment to supporting students with special educational needs. I know that all staff will continue to strive for the highest standards from all our students".



## The Plough Inn

**Irish Night every Thursday with  
NED O'GRADY  
Free Supper**

**£1 \* Quid a curry or Chilli on  
WEDNESDAYS**

**OAP Specials £2.75  
including ice cream.**

**Quid a Bottle \* This month  
Carlsberg**

**COACHES WELCOME \*  
Hideaway for Parties up to 60.**

**Lunchtimes 12 - 2 pm Two meals  
for the price of one ( up to  
parties of 8)**

**IN a HURRY? DIAL and DINE  
0116 239 2103  
Eat in or Takeaway**

**FATHER'S DAY 20th JUNE  
Special Present for Dad!  
Book now to avoid  
disappointment**



**Pabari's Ratby News**  
5 Station Road, Ratby.  
Tel. 0116-2393287

**For the Largest Selection in Ratby of  
Beers, Wines and Spirits.**

**A vast choice of Confectionery and Soft Drinks.**

**A Large variety of Greeting Cards, Wrapping Paper  
and Stationery.**



**Newspapers & Magazines,  
Delivered to your door daily.**



**We are the agents for  
SKETCHLEY DRY CLEANING.**

**Video Rental & Photocopying also available.**

**Opening Hours:  
Mon - Fri 6.15 am to 1 pm & 2.30 pm to 10 pm.  
Saturday 6.15 am to 10 pm.  
Sunday 7.30 am to 2 pm & 7 pm to 9 pm.**



**COME IN AND SEE FOR YOURSELF**

## MILLENNIUM

Don't forget we want to produce a special  
Millennium issue of Wot! About Ratby. Ideas  
welcome....photographs of the village's  
notable events, stories about the past!

## RATBY COMMUNITY ORCHARD NEWS

### POND PUDDLED AND TREES MULCHED!

### POND PLANTING DAY SUNDAY 16TH MAY, 10.30PM

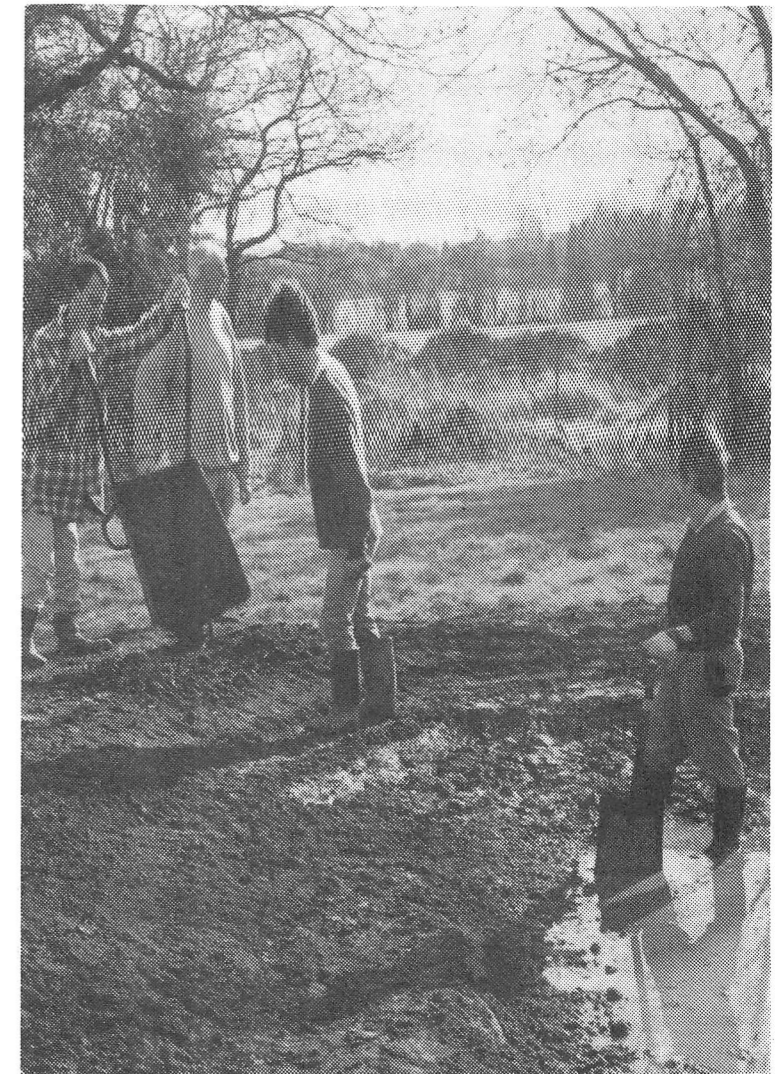
On 20th. February 1999 the Community Orchard Group held a Pond Puddling and Mulching Day at the Community Orchard on Taverner Drive. This means that the pond is now ready for planting with native water plants. The Group are now in the process of locating and ordering native plants that are not too invasive. Great care needs to be taken when deciding which plants are suitable. The

aim of the pond is to promote native wildlife. It is therefore very important that only native plants are introduced. Care must be taken in choosing the plants as some species grow very rapidly and would clog the pond and prevent wildlife flourishing.

It is very important that no one should introduce either plants or wildlife to the pond without careful consideration. Some Canadian Pond weed has mysteriously appeared in the pond on two occasions now. This has had to be removed. If left, it would take over the pond very rapidly. Some frog spawn was attached to this weed. Somebody probably thought they were being helpful by introducing this. However it is now

recognised that frog spawn should not be transferred from one pond to another as this can lead to the spread of red leg disease which is lethal to frogs. If you have some native pond plants that you would like to donate to the pond, please contact Neil Pilcher on 238 7481 who will advise on its suitability.

If you would like to get involved in planting the pond, come along to the pond planting day and see what is going on. As always Ratby Community Orchard needs you!!



## ALPINE CLEANING SERVICES



**OFFICES : CARPETS  
THREE PIECE SUITES  
VENETIAN BLINDS  
BUILDERS CLEAN ETC**

**Geoff Wood**

9 Ferndale Drive, Ratby. Leicester LE6 0LM  
Tel: 0116-2388306 Mobile: 0860 267141



**PRIVATE HIRE**

**PIPS** 0116  
2390909

**GROBY·RATBY·KM**

**AIRPORTS·LOCAL·COASTAL**

**B'HAM 24  
LUTON 37  
E.M.A 15  
H'ROW 55**



## VILLAGE MILLENIUM UPDATE

Following the last WOT report there have been a few other ideas floated for our village celebrations. The Ratby Cooperative Band are planning a full band turn out at a procession and family service on Sunday January 2nd 2000. All organisations and individuals could be encouraged to join in. They are also considering inviting a continental band to come to Ratby as part of their celebrations. Further details later.

The scouts will be holding their traditional New Years Eve function in the Church Rooms, with an emphasis on the occasion. The Village Society have a special sate on Tuesday 16th November 1999 with a combined End of Century/ 25th Anniversary meal and Social.

Another consideration could be to encourage a 'Village Turnout' to see in the new century, our own mini 'Trafalgar Square' at midnight.

All of the other projects mentioned in the last WOT are still ongoing:-

The photography project is the one scheme involving the Parish Council, and in particular Councillor Alan Withers, together with a group of volunteers.

The Church floodlighting is still progressing. Installation methods and costings are being considered.

The Welfare Hall Committee are all working very hard and the refurbishment scheme is gathering pace. Both the W.I. and Ratby Village Society have promised their help. Crow Pie 2000 is set to take place on 12th August. This is a date to keep free for the children's party and other activities organised by the Band and other groups.

The next Millenium meeting is on Thursday 27th May 1999 at 8.15 pm in the Church rooms. How about some other ideas? Please come along and tell us about them!

### C. GEARY & SONS THE CHAMPION BAKERS



VISIT OUR OLDE WORLDE SHOP

WEDDING, CELEBRATION & NOVELTY CAKES OUR SPECIALITY

C GEARY & SONS STATION ROAD, RATBY LEICESTER 2386600

### Geary's Bakeries

SEE and TRY our range of ;

66 Varieties of Bread  
34 Varieties of Cobs, Rolls, etc.  
200 Varieties of Cakes and Pastries

RUSTIC WHOLEMEAL ALLINSON  
HOVIS BEER BREAD & COBS BUN LOAVES  
FUDGE MALT BREAD  
FANCY COBS REARSBY HEALTH BREAD  
SESAME COBS & BAPS  
COTTAGE LOAVES  
SPEKKLE 'HIGH FIBRE' BREAD FARMHOUSE LOAVES  
MALT CRUNCH BREAD COBS WHITE & BROWN COBS and ROLLS & TWINNIES  
CHEESE & ONION BREAD  
FILLED COBS

## RATBY YOUTH ACTION GROUP

Ratby Youth Action Group (R.Y.A.) was set up to help investigate the needs of young people in Ratby and act as a link between the community and those with an interest in young people, and young people themselves. An initial survey established the need for a youth club, which the group set up with the help of the Ratby Detached Youth Workers. This ran for over a year, meeting first in the Working Men's Club, then in the Church rooms. For various reasons the club was discontinued and interest in the R.Y.A. has dwindled.

At the Annual General Meeting in March 1999 I outlined the current situation and said that due to other commitments I would not be in a position to do more than keep R.Y.A. ticking over.

So the challenge is there. If you have the time and enthusiasm to give the group a new lease of life, I would be delighted to hear from you.

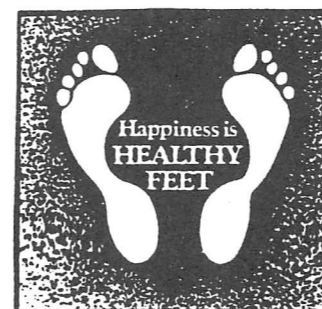
Andrew Simmonds  
Chairman.

I can be contacted on 239 2845



### QUALIFIED VISITING CHIROPODIST

Peter S Comley MSSCh. MBChA



Markfield 01530 244887  
24 Hour Ansaphone

Offers a Convenient & Professional Service  
Registered Member of the  
British Chiropody Association

## THE SERVICE GARAGE MAIN STREET RATBY

**M.O.T. TESTS**  
**CARS (PETROL - DIESEL)**  
and  
**MOTORCYCLES**

M.O.T. HOURS 9.00 - 4.15 Monday to Friday  
(Closed for lunch 1 - 2)

Telephone (0116) 2394966

**GAS  
APPLIANCE  
SERVICES**

- Appliance Servicing and Installation
- Breakdown and Repair Services
- Plumbing and Heating Installation
- Kitchen & Bathroom Design and Installation
- Quality Guaranteed by Experienced Engineers



**YOUR DOMESTIC GAS  
BOILER SERVICED**

6 SAXONS RISE, RATBY, LEICS. LE6 0NF

■ Tel: 0116 2393662



**TARGET**  
Private Hire  
**0116 239 2980**

ANY TIME, ANY DISTANCE

AIRPORTS FROM, £17.00

6 SEATER AVAILABLE

WEDDINGS & SPECIAL OCCASIONS

ROOF BOX & COVERED TRAILER FOR YOUR LUGGAGE  
AIR CONDITIONED COMFORT FOR YOU

CONTACT JOHN FOLEY  
STATION ROAD RATBY

# Ratby Parish Council

Tel 239 0167

## Burroughs Road Recreation Ground (The Recy)

Plans for replacement of the existing play equipment and installation of new toddler play equipment have been finalised in consultation with the Planning and Environmental Health Departments at the Borough Council. Before arriving at the above stage we spoke to residents on Stamford Street whose property backs up to the recreation ground and based on the feedback we received it was decided to move the toddler play area further down the field.

## Proposed Millennium Photographic Project

The Parish Council have been granted funding from the Borough Council. We will be contacting everyone who expressed an interest in helping with the project in order arrange a workshop to get this project under way.

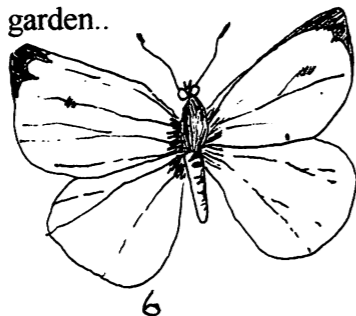
## Parish Council Election

You will be seeing notices regarding the Election of Councillors for Ratby Parish and Parish Ward. Nine (9) Councillors are to be elected for Ratby. Nomination papers are available from the Borough Council and must be returned not later than Noon on Thursday 8th April 1999. If the election is contested, the poll will take place on Thursday, 6th May 1999.

## Leylandii or Similar Conifer Trees/Hedging

A lot of the trees and hedges in the village are maturing and looking around the village it is obvious that some of them must be blocking the light and sun from the neighbouring garden. It would be nice if those people whose hedges are above 6' would go to their neighbour on a sunny day and see how shaded their garden is.

If you are thinking of planting a hedge this Spring it is worth talking to an expert at the garden centre about more suitable alternatives. It will give you less work in the long run as the Leylandii can grow to 75' if left unpruned and can grow to considerable width thus taking up valuable space in the garden..



## H&BBC Local Plan - Development at Ferndale Drive / Markfield Road

The two sites which affect Ratby are an extension to the existing land designated for building off Ferndale Drive and land bordering Kirby Grange Farm (95 houses) and Markfield Road opposite the sunshine houses (75 houses).

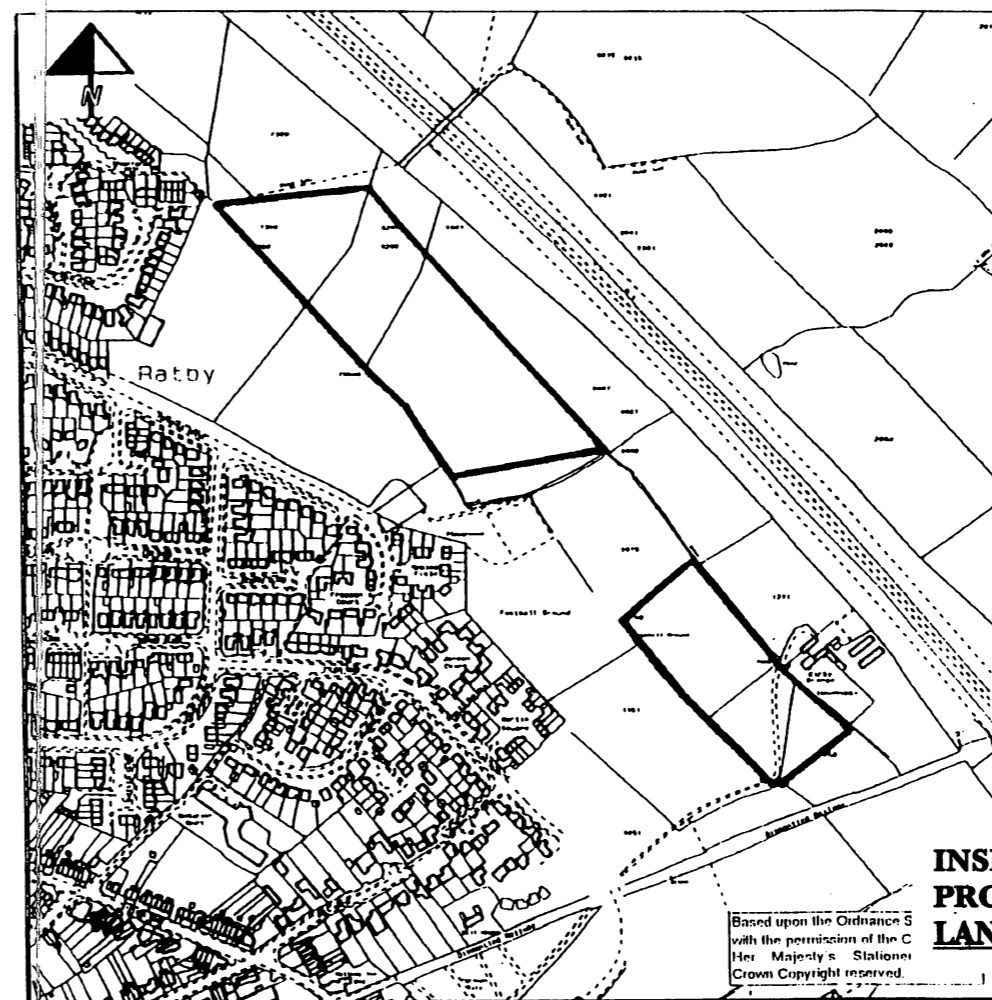
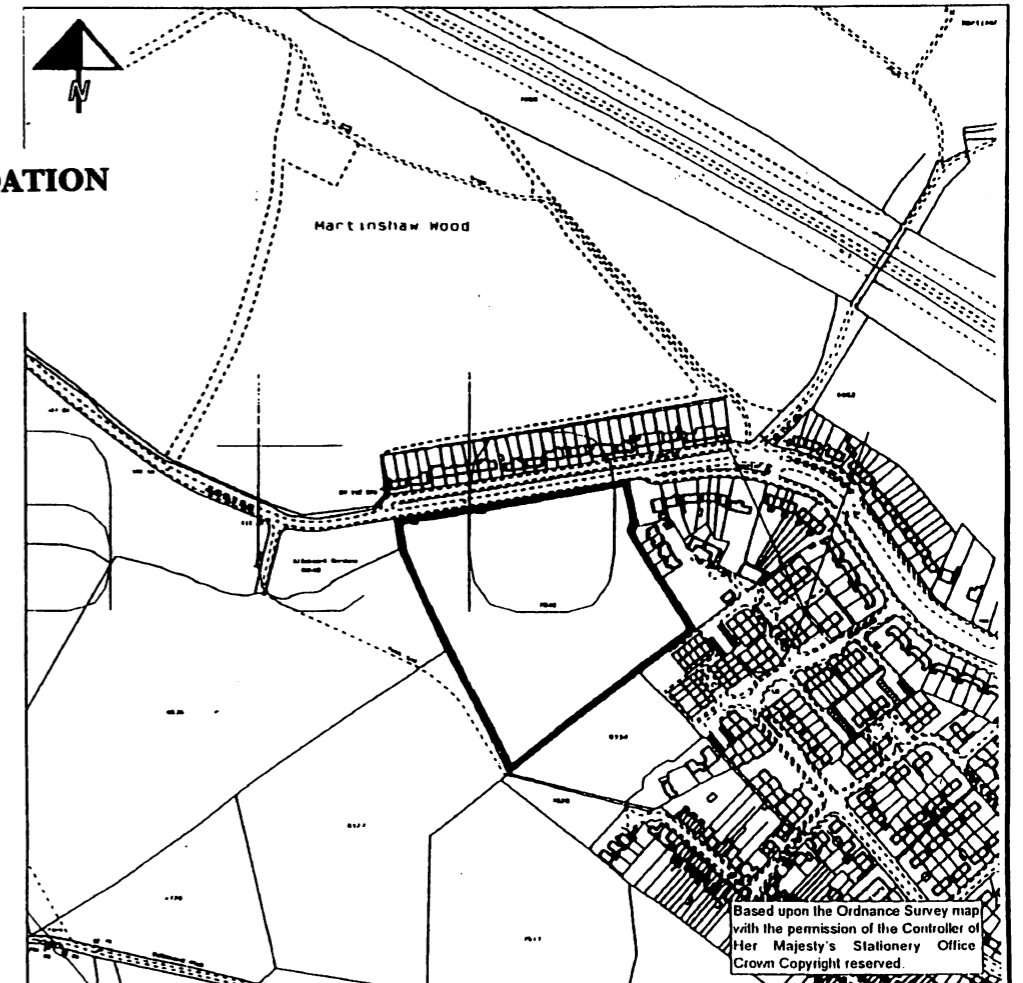
At the Borough Council Planning Committee meeting the officers recommended one of these sites be allocated for development - Ferndale Drive. The Chairman of the Committee then moved both sites be included in the plan for development and our representative, Councillor Bennett, with support reduced this to just one site - Markfield Road - which was subsequently endorsed at the full Borough Council meeting. This is in spite of a petition signed by 650 people of Ratby opposing the development on Markfield Road. If this development takes place it will open the door to a further 2,500 houses to the West of Ratby.

The Borough Council's recommendations are in line with the those of the Local Plan Inquiry Inspector who recommended the inclusion of Markfield Road for development and the deletion of the Ferndale Drive site from the Local Plan. The Parish Council is opposed to both developments but it recognises that it is very likely that at least one of them will go ahead.

The Markfield Road site was not included in the original Draft Plan and the decision of the Borough Council will now be the subject of a six week public consultation. This will allow Ratby residents to put forward representations both for and against both of these proposals. The consultation period will commence in April and you should make your views known, in writing, to either the Borough Council or the Parish Council

## INSPECTORS RECOMMENDATION PROPOSED INCLUSION

### MARKFIELD ROAD



## INSPECTORS RECOMMENDATION PROPOSED DELETION LAND WEST OF M1

Based upon the Ordnance Survey map with the permission of the Controller of Her Majesty's Stationery Office Crown Copyright reserved.



# Ratby Village Society

## CHARMING WORMS TRIBAL CUSTOMS AND A LOCAL RITUAL

Fred Harding's versatility is remarkable. He has a repertoire of over fifty illustrated talks, covering most of these islands and places abroad, and while shunning the use of notes delivers them in a forthright yet humorous style.

His January offering, 'English Tribal Customs' ranged far and wide across the country and through a whole gamut of activities, some of which border on the bizarre!

Morris Dancing, Hare Pie scrambling, Beating the Bounds and Bottle Kicking pale into insignificance when compared with Stilton Cheese Rolling, Worm Charming, carrying burning barrels of tar on the shoulders into the pub on bonfire night and other hazardous pursuits.

The object of the majority of rituals is to celebrate a season or festival, many of them being performed at special times such as Christmas, Easter, Whit, mid-summer, harvest and the solstices.

Drink, be it beer or wine seems to play a prominent role in many of these customs, either before or after the event. There also happened to be kissing involved in several of the rites! Two very sound excuses to most males one would think!

### ANNUAL GENERAL MEETING

February sees the traditional ritual of the Annual General Meeting, which for those who attend is nothing of an ordeal as might be supposed.

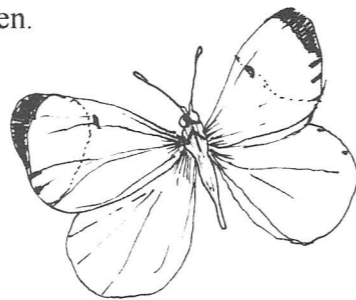
Another very successful year had passed and finances still not teetering on the brink of ruin. The predictable election of Officers resulted in Jack Haywood being re-elected as Chairman, Hoz Gamble as Hon. Secretary, and Betty Hulme as Hon. Treasurer. It was

heartening to receive some new nominations for the Committee vacancies, with Mrs Ann Day and Mr David Willis being elected. Mrs Joyce Haywood, who had been co-opted by the Committee last spring for one term, was eligible to stand for nomination and was duly elected.

At the conclusion of the formal business the Chairman was presented with a mini birthday cake to mark another anniversary of his arrival in this world. Thereafter followed the usual splendid buffet supper enjoyed by a throng of over forty members to the accompaniment of much animated chatter and good humour. The Society is now set to sail towards the Millenium with confidence.

The next two items on the programme will be on Tuesday 20th April, when Mr Derek Seaton is to show slides of 'The Splendours of Victorian London', and on Tuesday 18th May when 'local yokel' Dennis Green is due to continue his fascinating 'Tales of Ratby Village in the Thirties'.

On these two dates the Welfare Hall is the place to be seen.



## JULIE'S HAIRDRESSING

MAIN STREET, RATBY

**Traditional & Modern  
Styling**

**Telephone: 2392406**

## VILLAGE VICARAGE

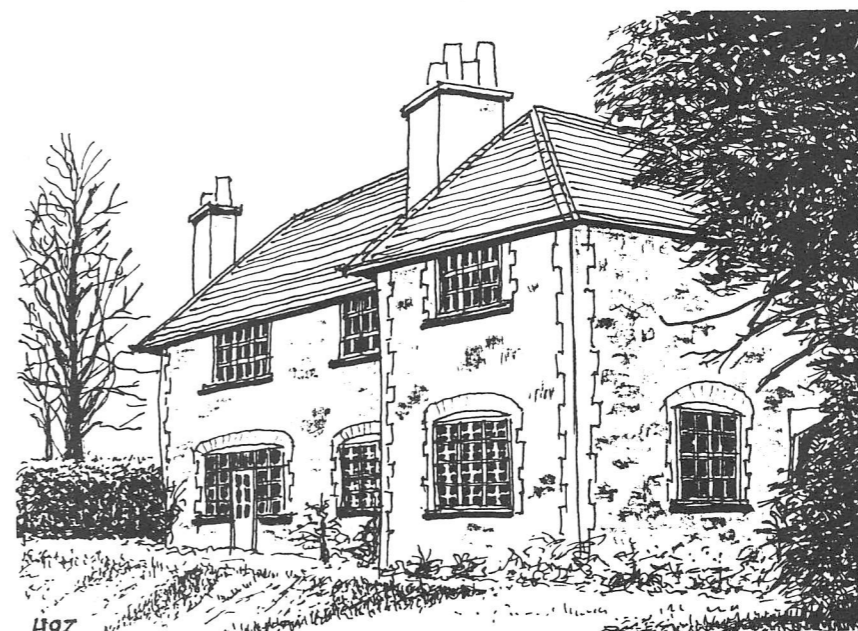
The vicarage stands cold and lonely now,  
so lately full of warmth  
and love.

A splendid turn-of-century house  
built in a far more elegant age,  
set in tree-decked grounds  
with grassy tennis court-so long disused-  
made for a verdant lawn  
on which the garden fete was held-  
or theatre in the open air  
when jazz was played on a summer eve.  
But yet inside-in latter years-  
tasteful furnishings and framed print walls  
sat easy with such fine decor.

A welcome, homely feel  
as soon as one stepped in the hall,  
for it was 'open house' to all  
though more than that for those happy few  
close to the incumbent and his charming  
wife.

But now they're gone-their term of duty  
spent-  
to leisure days in pastures new  
while left behind  
a hollow shell  
awaiting.....

*Hoz* February 1999



## Ratby Post Office

On-Line Lottery  
Scratchcards  
Newspapers  
Magazines  
Greeting Cards  
Post Cards  
Wrapping Paper  
CD's, Records  
& Cassettes  
Gift Bags & Tags  
Stationery  
Photocopying  
Toys  
Tights  
Sweets  
Chocolates  
Crisps  
Soft Drinks  
Cigarettes  
Tobacco  
Batteries  
Dry Cleaning  
Shoe Repairs  
Pools Collection  
**And we also  
sell Stamps!**

**YOUR  
ONE-STOP-SHOP**

Main Street Ratby

**1st Ratby St Philips & St James  
Guides needs you!**

**Do you enjoy working with girls  
aged 10 - 14 years?**

**Are you free on Thursday evenings  
6.30 - 8.00 pm? (term time only)**

The current Guider and her assistant are leaving the unit at the end of June 1999, leaving 24 Guides without any leadership. In order to keep the unit running we need two adults to come forward as replacements as soon as possible.

### Enthusiasm!

No previous experience is necessary, (training is provided) just heaps of enthusiasm and an awareness of what girls really want out of Guiding today! If you are interested please contact Julia Kowal on 0116 239 4663.



## RATBY LIBRARY CLUB

Come and join us from Tuesday 13th April,  
2.00pm - 3.30 pm.

Share stories and rhymes, make lots of  
creative goodies and have fun too!

If you're 3.5 years - 4 years old Caroline and  
Ann wish to welcome you to our weekly  
sessions. Call into the library for more  
information or telephone;

Caroline on 239 5472

Ann on 239 5123.





## A. H. COLEY

**Plumbing & Heating Repairs,  
New Installations, Bathrooms, Showers,**

*For a full range of services contact:*

4, Saxons Rise  
Ratby  
Leicestershire LE6 0NF  
Telephone: 0116-2394277

## POLICE CONSULTATIVE GROUP

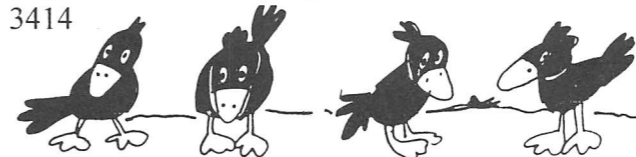
The Annual General Meeting of the  
Braunstone Area Police/Community  
Consultative Group will take place at 7.00  
pm on Monday 19th April at The Civic  
Centre, Kingsway, Braunstone.

Members of the public are invited to come  
along and discuss issues concerning the  
policing of their area with senior officers.  
These include matters relating to traffic,  
local crime, Neighbourhood Watch and  
crime prevention.

Individual cases cannot be discussed at the  
meeting, but can be addressed to Inspector  
Steve Hastings at Braunstone Police Station.  
Anyone wishing to have an item put on the  
agenda can contact:-

Mrs Kath Wallace, Chairperson, 0116 291  
6692

Inspector Steve Hastings 0116 248  
3414



## CASTLE OPTICIANS

*Having to travel to Leicester  
and park for just an  
eye examination?  
NOT ANY MORE!*

*Having to drag the children into  
town after school?  
NOT ANY MORE!*

*Budget to designer frames  
to suit all price ranges*

**GENUINE VALUE FOR MONEY**

**PLEASE FEEL FREE TO BROWSE**

**MAIN STREET KIRBY MUXLOE  
0116 2394288**

## GYPSY CREAMS

### Ingredients

125g (4oz) self raising flour  
55g (2oz) rolled oats  
55g (2oz) lard  
55g (2oz) margarine  
55g (2oz) caster sugar  
1 tablespoon cocoa  
2 teaspoons golden syrup dissolved in one  
tablespoon of hot water

### Filling

55g (2oz) icing sugar  
25g (1oz) butter  
1 tablespoon of cocoa mixed in a small  
amount of hot water  
Few drops of vanilla.

### Method

- 1 Cream fats and sugar, then mix in  
remaining ingredients
- 2 Roll into balls about size of a large cherry
- 3 Place on a greased baking tray and flatten  
with a damp fork
- 4 Bake for about 20 minutes at Gas 4, 180C  
or 350F
- 5 Mix the filling, cream butter until soft.
- 6 Gradually beat in sieved icing sugar, cocoa  
and vanilla.
- 7 Sandwich two cold biscuits with cold  
filling.
- 8 Dust lightly with icing sugar and enjoy!

*Scrivener*



# QUALITY AT THE RIGHT PRICE!

LAMBSKINS BOWTIE

**Penthouse  
Carpets Ltd.**

GEORGIAN CARPETS  
ANTRON®  
**STAINMASTER®**  
CARPET CERTIFIED BY DU PONT

Thousands of Patterns  
to choose from  
£3.99-£45.50 sq.yd.

**STAINRELEASE**

**Armstrong**

AXMINSTERS SCOTCHGARD  
TWISTPILE BERBERS  
SAXONY HUEGA TILES  
SCULPTURED CUSHIONFLOOR  
FLOTEX

**UNDERLAY £2.50 sq. yd.**

**TREDAIRE**

**Duralay**

**FREE FITTING**

**SHOP AT HOME SERVICE**

## PORTER'S DISCOUNT CARPETS

121/3 STATION ROAD  
RATBY, LEICESTERSHIRE  
Tel: 2393238/2395202

L

## Free 1st Hour

### Melsway Driving School

**Mel Shipley D.O.T. A.D.I. M.I.A.M.**

*All ages welcome . . . and nervous pupils*

*Learn to drive with Melsway*

**Telephone : 2386149**  
**3 Barton Close, Ratby**

