

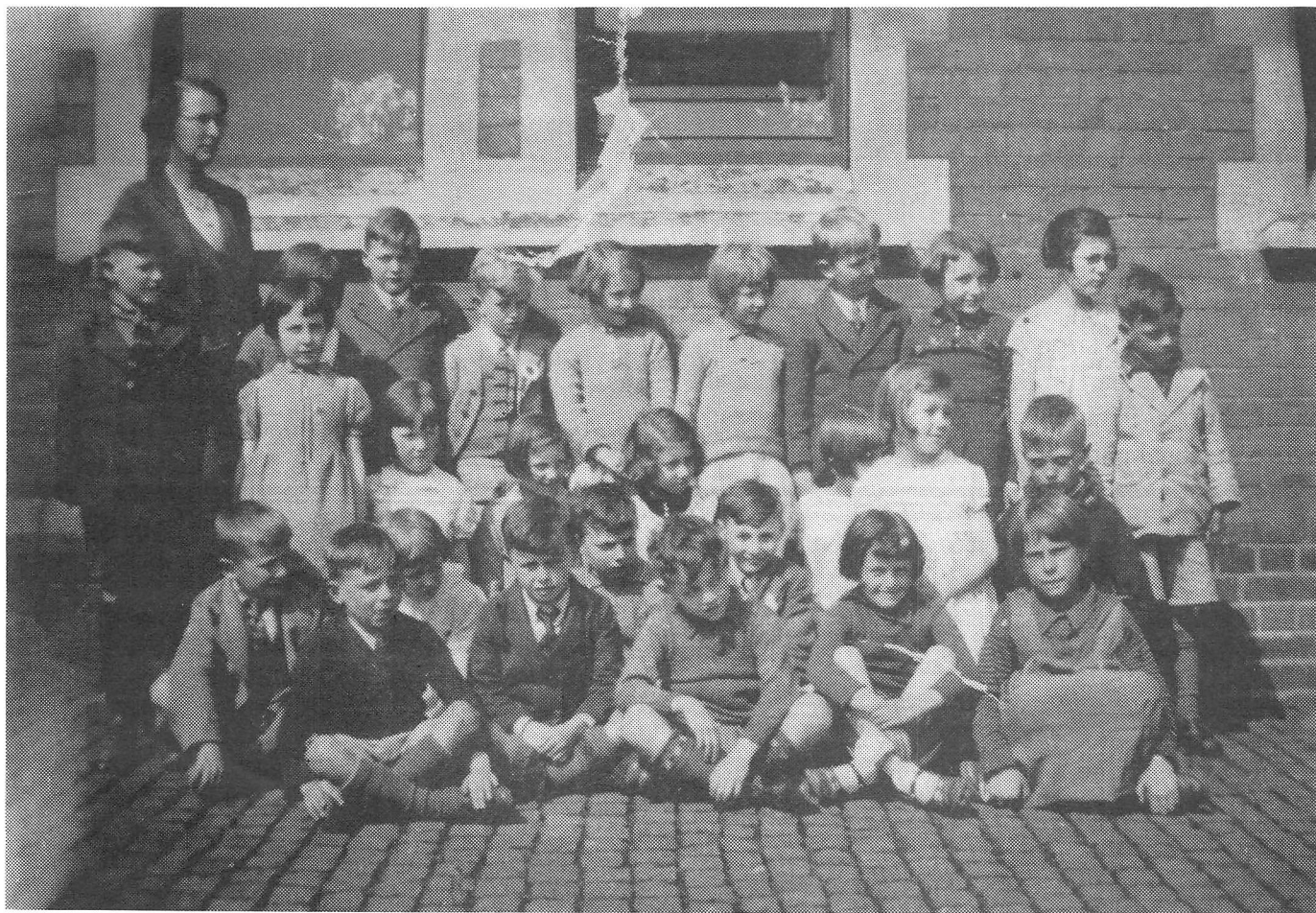
Wot!

About Ratby

Issue 69

PUBLISHED BY THE RATBY SCOUT GROUP

April 1998



RATBY SCHOOL 1939.

Mr A Geary of Kirby Muxloe (formerly a Ratby man) has sent this picture of a class at Ratby School. He believes the teacher is a Miss Govett, or Govett. If you recognise your self or anyone else, please tell us!!! And we'd love to know what it is the children on the back row are looking at!! It is certainly not the photographer.

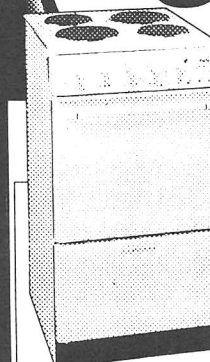


AVAILABLE NOW AT YOUR LOCAL

EURONICS CENTRE

sale

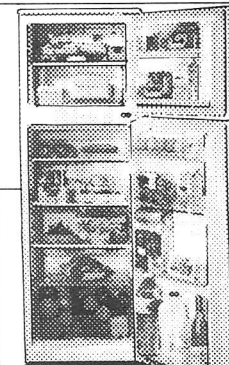
**THE BIGGEST SAVINGS ON THE BEST BRANDS
ONLY AT YOUR FRIENDLIEST HIGH STREET STORE!**



CREDIA

CREDIA 'Cadenza'
Slot-In Electric Cooker
● Full Width Grill 'Ultrafan' Oven
Model 49120

Sale Price
£219.99



LG

LG 'Frost Free' Fridge Freezer
● 5.6cu.ft (158 Litres) Fridge,
1.7cu.ft (47 Litres) Freezer
Model GR252SSF

Sale Price
£279.99

ZANUSSI Washing Machine
● 1200 to 400 Variable Spin
● 25 Programme Combinations
Model FL1282

Sale Price
£399.99

**TRICITY
BENDIX**



**TRICITY BENDIX
Washing Machine**
● 800 Spin ● Shower System
Model CIW800

Sale Price
£229.99

HOTPOINT 'Aquarius'
Washing Machine
● Intelligent Care ● 1000 Spin
Model WM62

Sale Price
£364.99



HOVER

HOVER 'Aristocrat'
Washing Machine
● 1000 Spin
● Eco Wash System
Model AC336

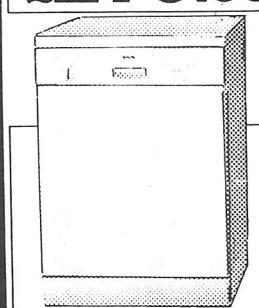
Sale Price
£299.99



LEC

LEC 'Softwave' Fridge Freezer
● 4.0 cu.ft (113 litre) Fridge,
4.3 cu.ft (122 litre) Freezer
● Automatic Defrost Fridge
● H.1486mm x W.533mm x
D.610mm
Model T450WS

Sale Price
£279.99



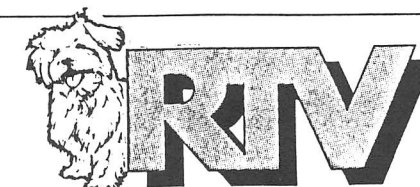
BOSCH

BOSCH Dishwasher
● 12 Place Settings
● 4 Programmes
Model SGS4012

Sale Price
£319.99

EURONICS
Customer CARE
TOP BRANDS • LOW PRICES
SPECIAL OFFERS
LOCAL DELIVERY
GUARANTEED AFTER SALES SERVICE
EXPERT STAFF

As a Euronics Centre we are an independent retailer and control our own prices. Previous prices or manufacturers recommended retail prices will be shown instore. Advertised prices are the maximum sale price and could be even cheaper, subject to manufacturers promotions.



23-27 Station Road, Ratby,
Leicestershire LE6 0JO
Tel: Leicester (0116) 2394544

ALL THESE ITEMS ARE AVAILABLE
AT PARTICIPATING STORES
Limited Offers -
While Stocks Last

EURONICS

CENTRE

YOU CAN TRUST EUROPE'S BIGGEST
INDEPENDENT ELECTRICAL BUYING GROUP

Discover the
Difference

♥ HEARTBEAT ♥

The British Heart Foundation will benefit this year from the endeavours of eight local police officers led by the Chief Constable of Leicestershire Mr. David Wyrko. They will be flying out on the 30th May to take on the challenge of completing a 243-mile, multi-terrain cycle route in Iceland. The route will take the party through a volcanic steaming landscape of ice and petrified fields of lava and ash deserts. Past roaring waterfalls, spouting geysers and boiling mud pools, and Iceland's most active volcano mount Hekla.

Joining the intrepid party will be local resident and retired scout leader Chris Woodward. Chris a Race and Community Relations Sergeant based at Police Headquarters, Enderby, who will be swapping running shoes for pedal power sees the cycle ride as a real challenge in comparison to the many marathons he has ran. Both in terms of the cycling and in raising the large amount of sponsor money required to take part in the event. Each participant has to raise a minimum of £2150 having already made a personal contribution of £250.

As well as being an experience of a lifetime the Leicestershire police officers will be raising money for the British Heart Foundation in honour of colleagues who have lost their lives to heart disease in recent years. Also Chris adds, not forgetting our many friends within the multi-cultural community we serve, who have similarly lost their lives so suddenly.

If you would like to support Chris and the team, he can be contacted on Leicester (0116) 2482716 at the Race and Community Relations Dept., Leicestershire Police Headquarters, P.O. Box 999 Leicester LE9 1AZ.

Any donations by cheques should be made payable to 'Leicestershire Constabulary Sponsored Cycle Ride'



C. GEARY & SONS

THE CHAMPION BAKERS



Geary's Bakeries

SEE and TRY our range of ;

66 Varieties of Bread

34 Varieties of Cobs, Rolls, etc.

200 Varieties of Cakes and Pastries

RUSTIC WHOLEMEAL ALLISON
HOVIS BEER BREAD & COBS
FANCY COBS REARSBY HEALTH BREAD
SPECKLE 'HIGH FIBRE' BREAD
MALT CRUNCH BREAD COBS
FARMHOUSE LOAVES
CHEESE & ONION BREAD

SUN LOAVES
FUDGE
SESAME COBS & BAPS
COTTAGE LOAVES
WHITE & BROWN COBS and ROLLS & TWINNIES

FILLED COBS

VISIT OUR OLDE WORLDE SHOP

WEDDING, CELEBRATION & NOVELTY CAKES OUR SPECIALITY

C GEARY & SONS STATION ROAD, RATBY LEICESTER 2386600

RATBY TOWN CRICKET

Here I am again rambling on again about my "youthful" years with the Ratby Town C.C. Before I tell of our efforts on the turf, could someone out there tell me how we became the Town C.C., as a mate of mine disputed the title. Mind you he would, being a Kirby Muxloe chap!

Never mind, back to the game. We were playing Croft, at Croft, a real village ground setting, a few conker trees dotted around the pavilion, more like a converted hen house as I remember, with a score board stuck on the wicket side. Croft batted first and made a grand score of 29, *yes 29*. Wallace Briggs was our Captain who by this time was cock a hoop, "we had tea" a little early.

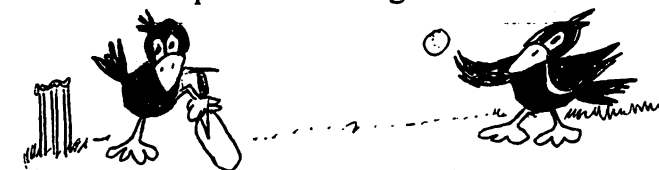
Our turn to bat, Wallace told Tom Toon and Reg Preston "get padded up lads", the two duly padded and ready for action received final instructions on how to get the runs required. Then came the famous, if not immortal words, for those privileged to hear them, "go knock em off lads". Ah! Ah! We were all back in the hut for 21!

⊗ ⊗ ⊗ ⊗ ⊗ ⊗ ⊗ ⊗ ⊗ ⊗ ⊗ ⊗ ⊗ ⊗

Then there was Huncote playing with the Town first team. Huncote batted first and made I remember around 80. Not much of a score I hear you say, but not bad when I tell you the outfield was kept cropped by a herd of cows and not a gang mower. (Also fertilised at the same time!)

We did not get off to a good start. Wilf Shipman, Howard Priestnall, Graham Forrayan all back inside for 24 or 25 runs. Out went Bert Willet. Now the Huncote stumper was just a little good to say the least and took a very smart catch. We all heard the 'click' back in the pavilion. Bert put his bat under arm ready to come, no appeal! Not even the stumper. Bert stood, then from the field came the weak appeal "Howzat umpire". Umpire, "not out!" Credit to the Huncote team, no moaning or grumbling just got on with the game. Bert from

there on just threw the willow and, sods law, he knocked the required runs being not out at the end.



Memories of two games played on Victory Park Cosby.

First one was of Cosby having a rather mean and nasty fellow, and I mean nasty, bowling. We had heard about his antics from other teams, all true I'll assure you. We were put into bat and within a few overs had our openers back, then in went a young lad named Graham Forrayan. After the first two overs we could see his confidence grow and he proceeded to knock our naughty chappie all round the ground. Graham having completely destroyed the bowling was 80 plus by tea, not out. I still don't know why we declared, I'm sure Graham would have made a ton.

The other game involved myself in a rather mean act in taking a wicket. I recall this with no great pride, but I must be honest and say I still laugh about it. Ratby had set Cosby chasing a target, and rather too successfully for comfort. A batsman named Julian, the bowler was D Perridge. Bowling rather sharp, yours truly standing well back. Julian played, misses, goes gardening (all cricketers will know) ball now in my gloves. Now we needed a wicket badly so I virtually tiptoe up to the stumps and whip the bails off! Mean but within the rules. 'Howzat Umpire' - out Julian. If you read this Mr Julian, after all these years I'd like to say sorry. Who won? I can't remember

A Geary

More cricketing stories in the next issue

Sponsored by **Gas Appliance Services - Leicester**

6 Saxons Rise, Rathy, Leicester LE6 0NF.
Tel: Office 0116-2393662

STEPPING STONES ON LEICESTER'S URBAN FRINGE

'Stepping Stones' is an exciting new community photography project which aims to put together a complete picture of how the Leicester urban fringe looks before the Millennium and the issues that matter to local people in these areas.

The project, which spans the urban fringe area of Leicester is hoped to involve and bring together the whole community.

As the urban fringe continues to change over the years it is important to have community based views of the areas that matter to them. Recognising areas which people care about means they can be protected for the future.

The project, run by the Leicester Urban Fringe Countryside Management Project, and supported by the Leicestershire Countryside and Wildlife Initiative, Leicester Mercury Newspaper and the Countryside Commission and launched in March will run until December 1998.

Local people from each area are being invited to produce a portfolio of photographs illustrating a range of the features which are valued in their local area. Some of the photos will be put together as a collection framed in the shape of their local area boundary, in the form of a collage. The portfolio can give a wider view of the area, and can include people memories, views, paintings - anything. The portfolios will then be used to create practical environmental projects with local people.

Anyone can get involved in putting across their ideas and feelings of their own stepping stone. The project is providing a complete training programme in the field of photography and collage throughout the year it runs.

Photography and the countryside is something that everyone can get involved in, and more importantly it is great fun!

For more information about the project, or to register to take part contact Carolyn Holmes or Dawn Robinson at the Leicestershire Countryside and Wildlife Initiative on: 0116 267 1377.



HIS & HERS



LADIES & GENTS HAIR DRESSING

OAPs welcome any day at
reduced rates

**STYLING BLOW DRYING
COLOURING SETTING
TRIMMING PERMING**

Tuesday to Saturday
6.00am - 5.30pm Tuesday to Friday
6.00am - 12.30 Saturday

Appointments not always
necessary

156 Station Road Ratby
Tel 2394429

CASTLE OPTICIANS

*Having to travel to Leicester
and park for just an
eye examination?
NOT ANY MORE!*

*Having to drag the children into
town after school?
NOT ANY MORE!*

*Budget to designer frames
to suit all price ranges*

GENUINE VALUE FOR MONEY

PLEASE FEEL FREE TO BROWSE

MAIN STREET KIRBY MUXLOE
0116 2394288

1st Ratby Scouts



Recent events and activities

On a cold night in January the 1st Ratby Scouts had a joint evening with Kirby Muxloe Scouts at the hut in the Woods. There were nine Kirby Scouts and eight Ratby ones, who turned up to play wide games.

The first game was played with two joint teams, as we wanted the scouts to intermix and hopefully make friends. The games consisted of team A setting off into the woods with a balloon each. Then they had to get back to the base (the hut) without team B bursting their balloon. When all members from team A were back, they swapped over and repeated the exercise.

After a drink (non-alcoholic) all round, a second game was played, this time Ratby against Kirby. Team A were sent out, with team B protecting an area in the middle of the clearing. Team A then had to try to get back into the area without being seen. Then the roles were reversed.

Kirby scouts expressed their thanks and we all agreed the evening was a success, we hope to have more joint evenings in the future.

In February, on another cold but dry evening we visited the old parts of Leicester on an organised "Ghost Walk" conducted expertly by, the one and only, Lynn Mellor.

It was a local history lesson as well as being a little scary, one or two of the younger scouts didn't quite know what to make of it all.

I would like to thank Lynn once again for making it an interesting and enjoyable evening.

Also in February we went to the Central Climbing Facility at Moat College to tackle the climbing walls.

This was run by Mike Baxter who is the chief climbing instructor ably assisted by four assistants. All climbing and safety equipment including helmets and harnesses were provided by the facility.

Mike and his crew set up three climbs in varying degrees of difficulty and by the end of the evening most of the scouts, including myself, mastered all three.

In March there was rifle shooting as part of the "Master at Arms" badge. To be awarded this badge the scout has to learn the parts of a rifle and also the safety rules plus scoring 60 or more points out of 100, twice.

This evening is run by a qualified instructor (Ray Lander) and a strict safety code is adhered to, thus ensuring a fun but safe evening for all.

At the end of March we are having a Scout Camp at John Lee's Wood, more news of that later -----

Yours in Scouting

Dennis Brookes.

Scout Leader.

**GAS
APPLIANCE
SERVICES**

- Appliance Servicing and Installation
- Breakdown and Repair Services
- Plumbing and Heating Installation
- Kitchen & Bathroom Design and Installation
- Quality Guaranteed by Experienced Engineers

**YOUR DOMESTIC GAS
BOILER SERVICED**

6 SAXONS RISE, RATBY, LEICS. LE6 0NF

Tel: 0116 2393662

**£25
+ VAT**

RATBY POST OFFICE

Main Street Ratby

**Newsagent Confectionary
Tobacco**

PHOTOCOPY SERVICE GREETINGS CARDS
HALLMARK, RUSTCRAFT ETC.
SHOE REPAIR AGENTS

Open 7 Days
Tel. 2393001

JULIE'S HAIRDRESSING

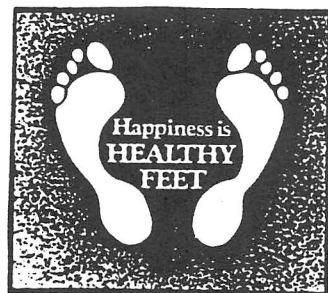
MAIN STREET, RATBY

**Traditional & Modern
Styling**

Telephone: 2392406

QUALIFIED VISITING CHIROPODIST

Peter S Comley MSSCh. MBChA



Markfield 01530 244887
24 Hour Ansaphone

Offers a Convenient & Professional Service
Registered Member of the
British Chiropody Association

23 BEAT

At present, Ratby is policed by officers from the Beaumont Leys Local Policing Unit (LPU). This LPU is the largest in the Leicestershire Constabulary and as a result of which, it is being divided in two creating a new LPU which is to be known as the New Parks LPU. Geographically, the existing LPU will be divided by the A50. Everything west of the A50, including Ratby, will eventually be policed by officers from the New Parks LPU. The officer in charge of the New Parks LPU will be Inspector Steph Pandit who has already taken responsibility for community issues. This division will in no way affect the police cover Ratby already has and I will keep you informed of all progress.

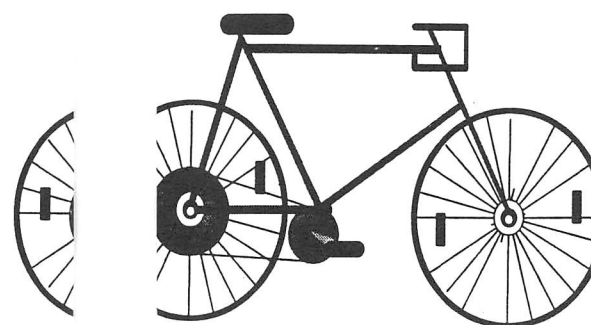
A police surgery is being piloted and is being held at the Ratby Library on a Wednesday. It started on 18th March and will run for ten weeks until the 23rd May. The surgery is for your benefit and you are invited to visit the library and your local beat officers who will be pleased to try and answer any questions, solve your problems or just offer advice. The times and dates of the surgery can be found at the end of this article.

In my last article (Feb WOT) I mentioned **Neighbourhood Watch** and outlined some of its many benefits. Since that article, I have had two enquiries about new schemes which I hope to set up in the near future. Anyone else interested in starting a scheme should contact any existing co-ordinator or either myself or Julia.

Part
your
nigh
10pm
qual
any
avail

ents - are you aware that there is a
h club which is held on a Monday
t at the Church Rooms 8pm -
n. The club is supervised by
ified youth workers. If you want
more information, a leaflet is
lable at the library counter.

FREE CYCLE CODING



R
S
F
ATBY LIBRARY CAR PARK
ATURDAY 25TH APRIL 1998
10am TILL 12pm
BRING YOUR BIKE ALONG
KNOW YOUR POST CODE

POLICE SURGERY

WED	18TH MARCH	2.30 - 4.30pm
WED	25TH MARCH	7 - 8pm
WED	1ST APRIL	2.30 - 4.30pm
WED	8TH APRIL	7 - 8pm
WED	22ND APRIL	7 - 8pm
WED	29TH APRIL	2.30 - 4.30pm
WED	6TH MAY	7 - 8pm
WED	13TH MAY	2.30 - 4.30pm
WED	20TH MAY	7 - 8pm
SAT	23RD MAY	TBA

Rob
PC 10

Howell
063

POLICE

RATBY NEIGHBOURHOOD WATCH

It has been very encouraging to note the revived interest being shown by the Police Force with regard to Neighbourhood Watch in Ratby. This is due to Ratby's new Community Officers Rob and Julie Showell, who together with a number of the scheme coordinators from earlier days are seeking to resurrect, plus add to, the many schemes which existed up to a couple of years ago.

The group held a meeting in the Library on Tuesday on 17 April. From these discussions it is hoped that interest will be revived through the many locations previously represented, plus other locations to follow.

Neighbourhood Watch works - this can be seen by the reflection in crime reports covering areas where schemes are very active. In fact as far as Ratby is concerned reported crimes increased in number around the same time as some of the active schemes lost pace for various reasons.

How about helping Ratby and yourselves by representing your neighbourhood - A further meeting has been arranged which is to be in the Library on Tuesday 28 April 1998 at 7.30pm. All are welcome.

PIPS PRIVATE HIRE
RATBY. GROBY. KIRBY
0116-23-93-818 MUXLOE.
AIRPORTS • LOCAL + DISTANCE
E.M.A £16
B'HAM £24
LUTON £36
H'ROW £54
GREEN TOKENS TAKEN

CRIME CRIME CR
TOGETHER WE'LL CRACK IT TOGETHER WE'LL CRACK IT TOGETHER

IME CRIME CRIME
WE'LL CRACK IT TOGETHER WE'LL CRACK IT TOGETHER WE'LL CRACK IT

Pabart's Ratby News.
5 Station Road, Ratby.
Tel. 0116-2393287

For the Largest Selection in Ratby of
Beers, Wines and Spirits.

A vast choice of Confectionery and Soft Drinks.

A Large variety of Greeting Cards, Wrapping Paper
and Stationery.

Newspapers & Magazines,
Delivered to your door daily.

We are the agents for
SKETCHLEY DRY CLEANING.

Video Rental & Photocopying also available.

Opening Hours:
Mon - Fri 6.15 am to 1 pm & 2.30 pm to 10 pm.
Saturday 6.15 am to 10 pm.
Sunday 7.30 am to 2 pm & 7 pm to 9 pm.

COME IN AND SEE FOR YOURSELF

Ratby Parish Council

Make your views known.....

Many of you will be aware that the wooden **bus shelter on Markfield Road** came down in the high winds just before Christmas. It was beyond economic repair so it had to be removed.

The Parish Council is mindful of the fact that a lot of new bus routes have been introduced along with a service whereby the bus will stop almost anywhere. We need to know if a replacement bus shelter at this site is of use to Ratby residents. Perhaps you would let us know your opinion - especially if you live in that area and you use the bus service.

To make your views known to the Parish Council please write to the Clerk to the Council, 3 Grange Close, Ratby or, if you prefer, telephone 239 0167.

We shall let you know the level of response we get along with the outcome which will be based on your opinions.

Parish Boundary. Many of you will hopefully have seen the Hinckley & Bosworth Borough Council notices concerning the Review of Groby Parish Boundary. The Borough Council is undertaking a review of the boundary between the Parish of Groby and the Parishes of Markfield and Ratby.

One of the suggestions put forward which you may wish to air your views on is 'the possible transfer from the Parish of Ratby to the Parish of Groby of an area of some 17 hectares (42 acres) of land lying to the south of Groby Community College and either side of Groby Lane.'

Any views on this should be conveyed in writing, not later than 15th April 1998, to Mr R M Tobin, District Secretary, Council Offices, Argents Mead, Hinckley, Leicestershire LE10 1BZ

Your opinion could make a difference - so get writing!!



Community Orchard Project Blossoms

It's time to get dug in to develop the community orchard that is planned for Taverner Drive. Barclays Bank Site Savers is funding the Project through the British Trust for Conservation Volunteers.

Members of the Parish Council have been meeting with representatives of other local organisations to draw up plans. It is intended to dig a pond and plant wildflowers on one side of the road. We are hoping to erect a totem pole carved by local people near to the pond.

On the other side of Taverner Drive, there will be apple trees and other fruit trees. A woodland verge with blue bells will also be planted. Sounds exciting? Get your spades out!

We need lots of help digging and planting. If you would like to get involved come to the **open site meeting at Taverner Drive at 6.30pm on Monday 20th. April 1998.** For more information ring Steve on 239 4873.

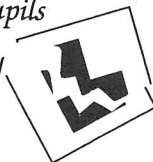
L Free 1st Hour Melway Driving School

Mel Shipley D.O.T. A.D.I. M.I.A.M.

All ages welcome . . . and nervous pupils

Learn to drive with Melway

Telephone : 2386149
3 Barton Close, Ratby



THE SERVICE GARAGE MAIN STREET RATBY

M.O.T. TESTS
CARS (PETROL - DIESEL)
and
MOTORCYCLES

M.O.T. HOURS 9.00 - 4.15 Monday to Friday
(Closed for lunch 1 - 2)

Telephone (0116) 2394966

RATBY in PICTURES



Alan Withers took this photograph of a Formula Renault which was a major attraction at the opening of the newly refurbished JET petrol station and services.

KEN TOMKINS

General Builder
Alterations and Extensions
PROPERTY REPAIRS

93 Gynsill Lane, Anstey, Leicester
Telephone: 2871698

ALPINE CLEANING SERVICES



OFFICES : CARPETS
THREE PIECE SUITES
VENETIAN BLINDS
BUILDERS CLEAN ETC

Geoff Wood

9 Ferndale Drive, Ratby. Leicester LE6 0LM
Tel: 0116 - 2388396 Mobile: 0860 267141

Ratby Village Society

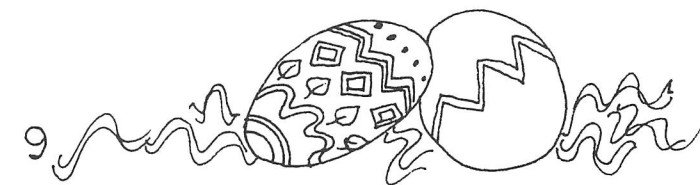
It has become something of a tradition that the year commences with a talk by former Ratby resident Fred Harding, now of Market Bosworth, and 1998 was no exception. At the January meeting Fred gave an account of a holiday cruising along the Rhine and Mosel rivers on a "floating hotel". The main features were visits to Cologne, Koblenz (where the Mosel joins the Rhine) and the ancient town of Trier with its remarkable well preserved Roman structures. As always the photography to accompany the talk was excellent.

The Annual General Meeting, together with a buffet supper, follows every February. The Chairman, Jack Haywood, reviewed a successful year during which the Society sponsored and members worked, a tapestry kneeler for the parish church; had continued to maintain the flower box at the War Memorial, to support the Woodland Trust and to liaise with the Parish Council on matters relative to the well-being of the village. The programme of events had been well supported and enjoyed by members and visitors. Tribute was paid to Alan Spencer (who is planning to leave Ratby during the year) for all his work on behalf of the Society.

The officers --Jack Haywood (Chairman), Horace Gamble (Hon. Secretary) and Betty Hulme (Hon. Treasurer) -- were all re-elected to serve a further term and newly elected to the Committee were Ray and Brenda Leavis.

At the conclusion of the formal proceedings a lavish buffet supper was partaken accompanied by the usual bomhommie, always a keynote of Society functions.

The next meeting, on Tuesday 21st April, will see the return of Mr Brian Jeffs with a spectacular audio/visual show followed on 19th May by "local yokel" Dennis Green recounting some tales of Ratby in the 1930s.



Letter

We are aware that a number of Ratby residents are interested in the developments taking place at the Sports Club.

For anyone who is interested, we shall shortly be making an application to the National Lottery for funding to provide an all weather surface for training and other uses, a fishing lake, a shower and changing block and an extension to the club house. I have left a copy of the plans at the library and anyone is very welcome to go and view them.

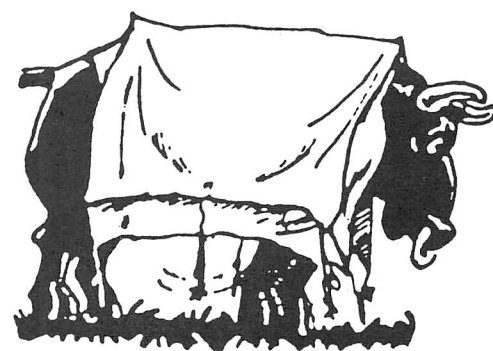
We are a private, members only, club and anyone wishing to use our facilities must become a member. The cost is currently only £6 per year. Anyone wishing to become a member is very welcome to drop in and have a look round and chat and maybe a drink before you make up your mind.

These developments will of course be of great value to us, but we would like to think that all residents, and or groups, will benefit in one way or another.

Any queries, or suggestions, will be taken seriously, please just drop a line to the Club at the above address.

Yours sincerely

MIKE WEBBER.



DON'T FORGET THE ANNUAL FAMILY CAMP

AUGUST 8TH - 10TH

Contact Peter Fowler

2386165



QUALITY AT THE RIGHT PRICE!

Penthouse Carpets Ltd.

GEORGIAN CARPETS
ANTRON®
STAINMASTER
CARPET CERTIFIED BY DU PONT

AXMINSTERS
TWISTPILE
SAXONY
SCULPTURED
FLOTEX

LAMBSKINS
BOWRON
SCOTCHGARD
BERBERS
HUEGA TILES
CUSHIONFLOOR

Thousands of Patterns to choose from
£3.99-£45.50 sq.yd.

NEW!
Scotchgard
STAINRELEASE

Armstrong

FREE TREADPAIRE

UNDERLAY £2.50 sq. yd.

Duralay

FREE FITTING

SHOP AT HOME SERVICE

PORTER'S DISCOUNT CARPETS

121/3 STATION ROAD
RATBY, LEICESTERSHIRE
Tel: 2393238/2395202

EVERY SECOND COUNTS

RATBY CHURCH CLOCK APPEAL 1998

I am very pleased to be able to write this article, at a time when the above campaign has come to a successful conclusion. The campaign, which the Church Council began in early January has been a tremendous success, and our grateful thanks are due to all those villagers, and to those outside our parish, who have donated to the appeal fund. For those interested in such things, we received a donation from as far away as Vancouver, Canada. The fame of Ratby Church clock has indeed spread far and wide!

Including the generous grants from Hinckley & Bosworth Borough Council and Ratby Parish Council, the total sum raised has exceeded £4,600 enough to enable us not only to carry out the repairs and set the clock mechanism working again, but also to establish a maintenance fund for the provision of future annual inspections and remedial works. This has only been possible thanks to the huge support which we have received locally for this project. We are indebted to several local businesses as well as the organisations which flourish in Ratby for their financial support in this venture.

As I will be "retiring" as Parish Churchwarden at the Annual General Meeting of the Church this month, prior to our move to Peterborough, I would like to take this opportunity to express my appreciation of all those with whom I have had the pleasure of working over the past 6 years, especially Revd Michael Hardy, Revds Tony & Susan Leighton, my fellow Wardens and of course all those involved with Sunday School, especially Pamela Pollard. It is pleasing to leave on a high note, and this campaign has certainly shown beyond a shadow of a doubt that Ratby truly is a community in which:-
"EVERY SECOND COUNTS".

Alan Spencer
Parish Churchwarden
March 1998



PUREE DE FEVE (BAKED BEAN SOUP)

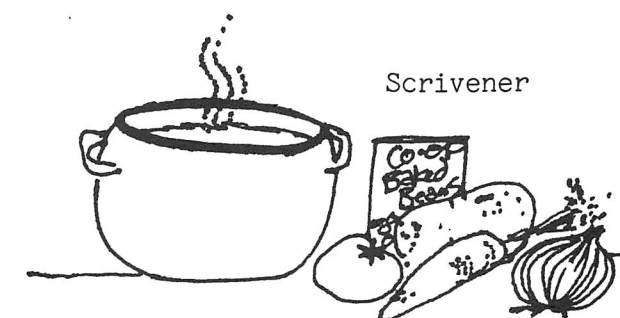
Ingredients

- 1 Medium tin baked beans in tomato sauce
- 1 Onion chopped
- 1 Carrot chopped
- 1 Potato chopped
- 1 Rasher of bacon chopped
- 1 Pint of stock
- 1 Tomato chopped
- ½ oz Fat
- Sprig of thyme
- Salt and pepper to taste

Method

1. Lightly fry onion and bacon, add carrot, potato and tomato, cook for 5 mins
2. Stir in baked beans, thyme & seasoning and mix together
3. Pour in stock and simmer for 30 mins
4. Either sieve or liquidise until smooth
5. Taste and add a little milk if too thick

Serve with fried croutons, toast or buttered roll



A. H. COLEY

*Plumbing & Heating Repairs,
New Installations, Bathrooms, Showers,*

For a full range of services contact:

4, Saxons Rise
Ratby
Leicestershire LE6 0NF
Telephone: 0116-2394277